



Post Office Box 97
 Benton Harbor, Michigan
 Ph: 269/926-6171
 Fax: 269/925-8288

PART NUMBER:
STD112

REVISION:
F

Model Number	MAX. PRESS.		MAX. SPEED	HP	kW	Net Wt.	
	bar.	PSI				lbs.	kg
1AM-NRV-56	7.0	100	10,000 RPM	.42	0.30	2	0.9
1AM-NRV-60	7.0	100	10,000 RPM	.42	0.30	2	0.9

SOUND LEVEL 78 dba MAX.

NORMAL AMBIENT +1°C. - 120°C.

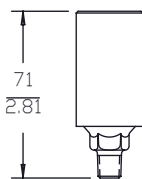
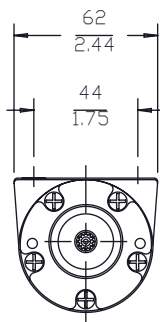
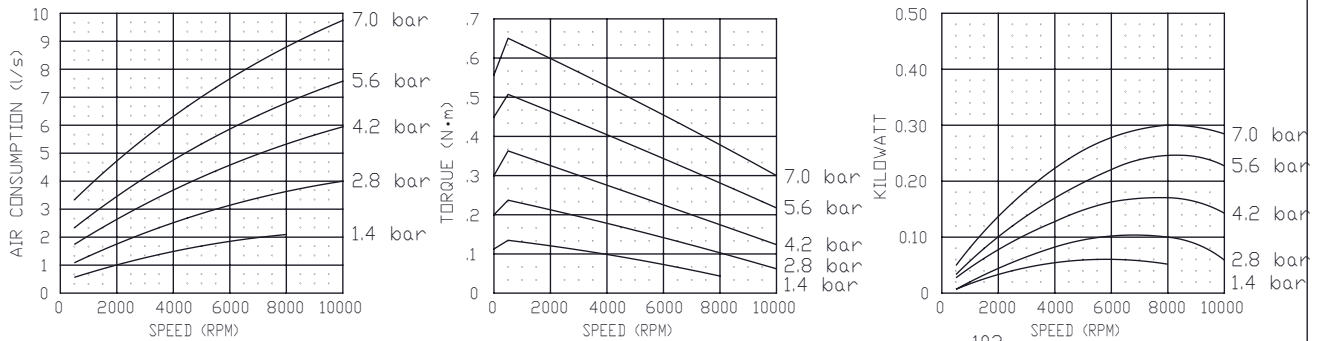
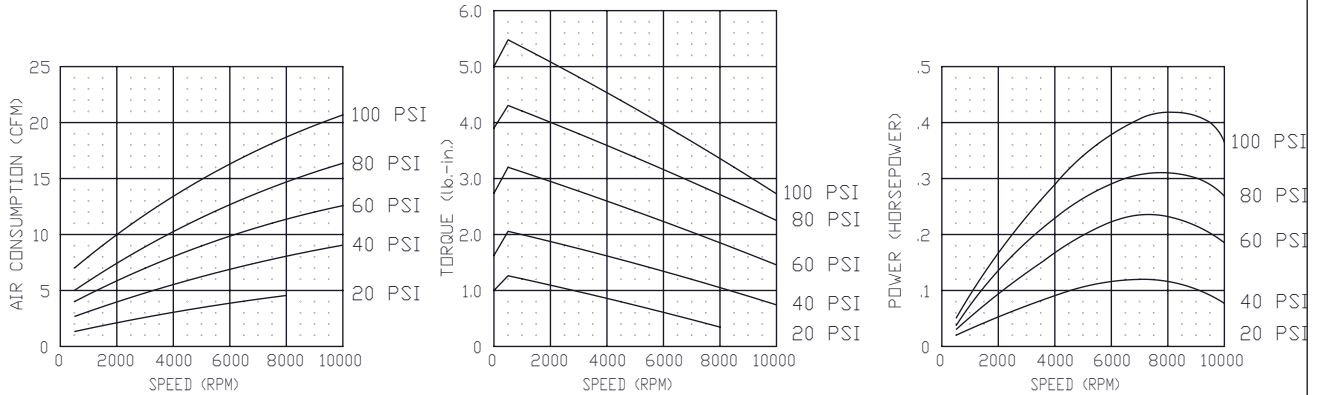
RELATIVE HUMIDITY 0% - 100%

ENVIRONMENT HAZARDOUS AMBIENT COMBUSTIBLE
GAS AND DUST +1±C TO +40±C

CONFORMS TO EUROPEAN STANDARD EN13463-1 NON-ELECTRICAL
 EQUIPMENT FOR EXPLOSIVE ATMOSPHERES GROUP II CAT. 2
 (GAS AND DUST) PROTECTED BY CONSTRUCTION (SURFACE TEMP. RATED 135±C)

NOTES:

1) TECHNICAL DATA SUBJECT TO CHANGE WITHOUT NOTICE.



MUFFLER ASM.
 (UNATTACHED)

