

# Steel square covers

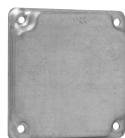
## 4" SQUARE SURFACE COVERS – 5.5 CUBIC INCH CAPACITY

RAISED 1/2"

UL LISTED

CSA LISTED

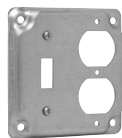
Screw(s) provided in raised cover kit are for use with the center hole on duplex receptacles. Nuts that are provided in kit are to be used in conjunction with the screws that are provided as standard packaging with devices to mount device to raised cover. For GFCI device installation, no screw is needed; please disregard.



TP503



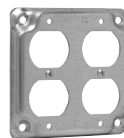
TP504



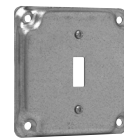
TP506



TP508



TP510



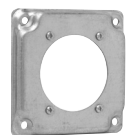
TP512



TP507, TP514,  
TP519



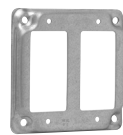
TP516



TP509 (4 screws),  
TP518 (2 screws)



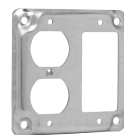
TP513



TP850



TP515



TP517

Cat. #	Description	Unit qty.	Wt. lbs. per 100
TP503	Raised blank	50	35
TP504	For one toggle switch and one single receptacle 1 <sup>13</sup> / <sub>32</sub> " (1.406) dia.	50	31
TP506	For one toggle switch and one duplex receptacle	50	31
TP508	For two toggle switches	50	35
TP510	For two duplex receptacles	50	26
TP512	For one toggle switch	50	35
TP507	For one single receptacle 1 <sup>19</sup> / <sub>32</sub> " (1.594) dia.	50	37
TP514	For one single receptacle 1 <sup>13</sup> / <sub>32</sub> " (1.406) dia.	50	34
TP519	For one power outlet 1 <sup>23</sup> / <sub>32</sub> " (1.719) dia.	50	37
TP516	For one duplex receptacle	50	31
TP509	For one power outlet 2 <sup>7</sup> / <sub>16</sub> " (2.438) dia.	50	23
TP518	For one power outlet 2 <sup>3</sup> / <sub>16</sub> " (2.141) dia.	50	34
TP513	For one GFCI receptacle	50	31
TP511	For two GFCI receptacles	50	26
TP515	For one toggle switch and one GFCI receptacle	50	31
TP517	For one duplex receptacle and one GFCI receptacle	50	26