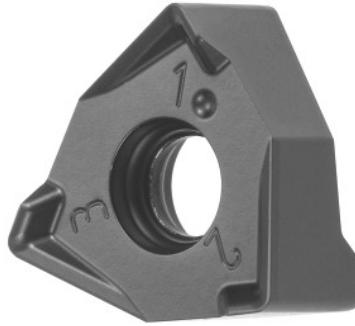


Garant
Indexable insert for milling XNEX 080608, for indexable milling cutters, HB7525

Order data

Order number	215185 ST900
GTIN	4062406392246
Item class	21A

Description
Version:

6 edges ensure good value for money, due to a low price per cutting edge.
Double-sided 2×3-edge carbide indexable insert for **shoulder milling operations**.

Note:

Standard application values for $a_e = 0.3 \times D$ / $a_p = 3\text{mm}$.

Technical description

Feed f_z per tooth	0.18 mm
Corner radius	0,8 mm
Type	ST900
Insert thickness S	6.35 mm
ISO code indexable insert	XNEX 080608
Type	HB7525
Tool material	Carbide

maximum cutting depth $a_{p,max}$	4 mm
Number of changes/inserts	6
Type of product	Indexable insert for milling

User data

	Suitability	V_c	ISO code
Steel < 500 N/mm ²	suitable	335 m/min	P
Steel < 750 N/mm ²	suitable	300 m/min	P
Steel < 900 N/mm ²	suitable	280 m/min	P
wet maximum	suitable only under restricted conditions		
wet minimum	suitable only under restricted conditions		
dry	suitable		
Air	suitable		