



Applications:

- Myers™ hubs are used in the termination of electrical circuits through wall of the enclosure
- Designed for use indoors or outdoors with rigid conduit and IMC
- Ideal for pharmaceutical, chemical and food processing, pulp/paper, nuclear, solar and commercial construction applications
- Resistant to a variety of chemicals, including acetic, citric and salt water
- Special design of o-ring gasket provides excellent environmental ratings and chemical resistance
- Hub is provided with a stainless steel ground nut

Features:

- Wide range of styles, trade sizes and materials to meet customer requirements and preferences
- Multiple certifications provide users peace of mind
- Easy installation and smooth pulling service for labor savings
- Tapered female threads for rigid/IMC conduit, NPSM male threads

Certifications and compliances:

- NEC/CEC:
 - Class I, Division 2
 - Class II, Divisions 1 & 2
 - Class III, Divisions 1 & 2
 - Class I, Zone 1, AEx e II
 - Class I, Zone 1, Ex e II
- cULus Listed
 - UL Standard 514B
 - CSA Standard C22.2 No. 18
- NEMA Type 2, 3, 3R, 4, 4X, 12 (std. hub and ground hub)
- IEC:
 - STGK:
 - ATEX Certified ITS12ATEX47591X Ex  II 2G Ex e IIC Gb to EN 60079-0:2009, EN 60079-7:2007, and EN 60079-14 Standards Ta -15°C to 120°C
 - IECEX Certified IECEX ETL 12.0009X Ex e IIC Gb to IEC 60079-0:2007-10, Edition 5, IEC 60079-7:2006-07, Edition 4 and IEC 60079-14 Standards Ta -15°C to 120°C
 - IP66
 - SSTGK M2:
 - ATEX Certified DEMKO 18 ATEX 2002X,  II 2G Ex eb IIC Gb to EN IEC 60079-0:2018 and EN IEC 60079-7:2015 +A1:2018 standards Ta -55°C to 180°C
 - IECEX Certified IECEX UL 18.0007X, Ex eb IIC Gb to IEC 60079-0:2017 and IEC 60079-7:2017 standards Ta -55°C to 180°C
 - IP66



Standard materials:

- Nut: Zinc (Zamek-2, Zamek-3), aluminum (Al 360), stainless (316)
- Body: Zinc (Zamek-2, Zamek-3), aluminum (Al 360), stainless (316)
- Insuliner: Lexan, PEEK GF15 (SSTGK M2 only)
- O-Ring: Viton; silicone (SSTGK M2 only)
- Ground Screw: Steel/stainless steel

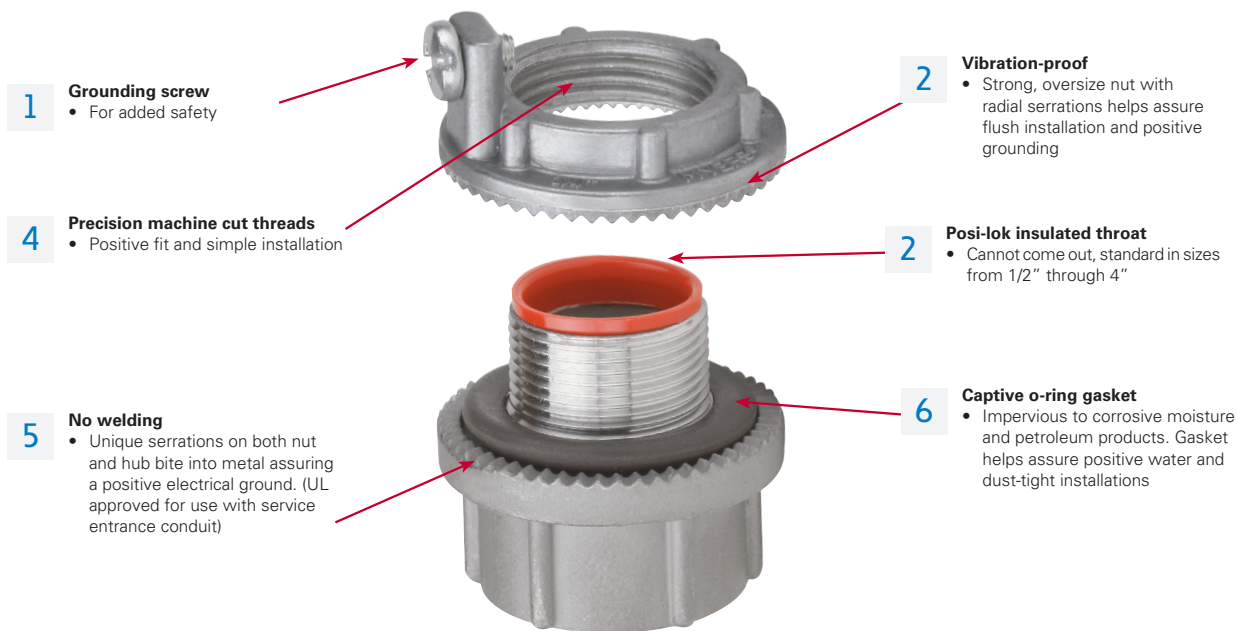
Standard finishes:

- Aluminum – natural
- Zinc – natural
- Stainless – natural

Options:

- | Description | Suffix |
|--|--------|
| • Nickel-chrome plate finish (available on zinc hubs only) | CP |

Myers hubs design features



1 **Grounding screw**

- For added safety

2 **Vibration-proof**

- Strong, oversize nut with radial serrations helps assure flush installation and positive grounding

4 **Precision machine cut threads**

- Positive fit and simple installation

2 **Posi-lok insulated throat**

- Cannot come out, standard in sizes from 1/2" through 4"

5 **No welding**

- Unique serrations on both nut and hub bite into metal assuring a positive electrical ground. (UL approved for use with service entrance conduit)

6 **Captive o-ring gasket**

- Impervious to corrosive moisture and petroleum products. Gasket helps assure positive water and dust-tight installations



Hub Basic Scru-Tite™
Available in trade sizes 3/8" through 6"

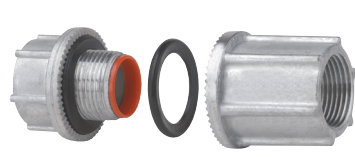
Hubs are ideal for general use with rigid conduit. Provides positive seal and electrical ground.

Ground hub
Available in trade sizes 1/2" through 6"

Combines all of the features of the Hub Basic Scru-Tite plus the additional feature of the grounding screw on the locknut.

ATEX rated hub
Available in trade sizes 1/2" through 4"

Hub is listed for use in hazardous (classified) locations to IECEx-ATEX certifications. Ideal for global requirements and OEM's shipping material worldwide.



Through-bulkhead fitting
Hubs are the perfect method for installing hubs on cast boxes or through thicker walls.



Metric to NPT adapter
Used to convert a threaded metric entry to a NPT entry.



Drain plugs
Designed to install in the bottom of an enclosure to drain any accumulated condensation. Available in aluminum or stainless steel construction.



Cap-off
Designed to install in enclosure to provide environmental cap for unused entries or knockouts.

Myers hubs

HUB BASIC SCRU-TITE – NEMA 2, 3, 3R, 4, 4X, 12

Zinc

UL File No. E-27258



Cat. #	Size	Unit qty.	Wt. lbs. per 100
ST 03 ^⓪	3/8"	25	11
ST 1 ^⓪	1/2"	25	19
ST 2 ^⓪	3/4"	25	27
ST 3 ^⓪	1"	25	40
ST 4 ^⓪	1 1/4"	10	51
ST 5 ^⓪	1 1/2"	10	68
ST 6 ^⓪	2"	10	92
ST 7 ^⓪	2 1/2"	5	210
ST 8 ^⓪	3"	2	245
ST 9 ^⓪	3 1/2"	2	278
ST 10 ^⓪	4"	2	318
ST 11 [Ⓟ]	5"	1	478
ST 12 [Ⓟ]	6"	1	685

^⓪Optional nickel-chrome plate finish. Add suffix -CP.

[Ⓟ]Not supplied with insulator.

Conduit hubs

HUB BASIC SCRU-TITE – NEMA 2, 3, 3R, 4, 4X, 12

Aluminum

UL File No. E-27258



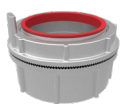
Cat. #	Size	Unit qty.	Wt. lbs. per 100
STA 1	1/2"	25	8
STA 2	3/4"	25	11
STA 3	1"	25	17
STA 4	1 1/4"	10	30
STA 5	1 1/2"	10	30
STA 6	2"	10	38
STA 7	2 1/2"	5	80
STA 8	3"	2	100
STA 9	3 1/2"	2	138
STA 10	4"	2	150
STA 11 [Ⓟ]	5"	1	300
STA 12 [Ⓟ]	6"	1	300

[Ⓟ]Not supplied with insulator.

GROUND HUB – NEMA 2, 3, 3R, 4, 4X, 12

316 Stainless steel

UL File No. E-59509



Cat. #	Size	Unit qty.	Wt. lbs. per 100
SSTG 1	1/2"	10	29
SSTG 2	3/4"	10	41
SSTG 3	1"	10	57
SSTG 4	1 1/4"	5	73
SSTG 5	1 1/2"	5	99
SSTG 6	2"	5	134
SST 7 [Ⓜ]	2 1/2"	2	183
SST 8 [Ⓜ]	3"	2	278
SST 9 [Ⓜ]	3 1/2"	2	328
SST 10 [Ⓜ]	4"	2	395

[Ⓜ]Not UL Listed as means of grounding and bonding. Does not include tapped ground tab or ground screw.

GROUND HUB – NEMA 2, 3, 3R, 4, 4X, 12

Zinc

UL File No. E-59509



Cat. #	Size	Unit qty.	Wt. lbs. per 100	Max. Copper Grd. Wire Size	
				CSA ^⓪	UL ^⓪
STG 1	1/2"	25	20	#8	#8
STG 2	3/4"	25	28	#8	#8
STG 3	1"	25	42	#8	#8
STG 4	1 1/4"	10	55	#8	#8
STG 5	1 1/2"	10	70	#6	#8
STG 6	2"	10	95	#4	#8
STG 7	2 1/2"	5	190	#2	#6
STG 8	3"	2	243	1/0	#6
STG 9	3 1/2"	2	300	2/0	#6
STG 10	4"	2	323	2/0	#4
STG 11 [Ⓟ]	5"	1	625	2/0	#2
STG 12 [Ⓟ]	6"	1	750	3/0	#1

[Ⓟ]Not supplied with insulator.

^⓪Use of wire terminal is required by CSA and recommended by UL for wire gauges over 10 AWG.

GROUND HUB – NEMA 2, 3, 3R, 4, 4X, 12

Aluminum

UL File No. E-59509



Cat. #	Size	Unit qty.	Wt. lbs. per 100	Max. Copper Grd. Wire Size	
				CSA ^⓪	UL ^⓪
STAG 1	1/2"	25	13	#8	#8
STAG 2	3/4"	25	14	#8	#8
STAG 3	1"	25	18	#8	#8
STAG 4	1 1/4"	10	25	#8	#8
STAG 5	1 1/2"	10	33	#6	#8
STAG 6	2"	10	41	#4	#8
STAG 7	2 1/2"	5	90	#2	#6
STAG 8	3"	2	103	1/0	#6
STAG 9	3 1/2"	2	138	2/0	#6
STAG 10	4"	2	140	2/0	#4
STAG 11 [Ⓟ]	5"	1	325	3/0	#2
STAG 12 [Ⓟ]	6"	1	350	3/0	#1

[Ⓟ]Not supplied with insulator.

^⓪Use of wire terminal is required by CSA and recommended by UL for wire gauges over 10 AWG.