



|                        |               |                               |              |
|------------------------|---------------|-------------------------------|--------------|
| <b>EAN:</b>            | 4013288210432 | <b>Size:</b>                  | 130x44x20 mm |
| <b>Part number:</b>    | 05004535001   | <b>Weight:</b>                | 77 g         |
| <b>Article number:</b> | 8790 HMB Deep | <b>Country of origin:</b>     | TW           |
|                        |               | <b>Customs tariff number:</b> | 82042000     |

- Long sockets for low-lying screwdriving, often even with protruding threaded rods in small spaces
- Hexagonal profile enables precise bolting with high power transmission and preserves the profile
- With Take it easy tool finder: colour coding by size
- Knurling at lower end to enable easy gripping when used in manual applications
- For manual and machine operation (non-impact), ball intercept ring
- Made of matt chromed chrome-vanadium

The Wera manual and machine socket (ISO 2725 part 3) can be used in manual and machine operations. With Take it easy tool finder with colour coding by size - for quick and easy identification of the required tool. Slip-proof for easy grip even with oily hands. With ball stop groove. For external hexagon screws and bolts. Made of matte chrome-plated chrome-vanadium.

**Web link**  
<https://www.wera.de/en/05004535001>

Wera - 8790 HMB Deep  
05004535001 - 4013288210432

Wera Werkzeuge GmbH  
Korzter Straße 21-25  
D-42349 Wuppertal  
Tel: +49 (0)2 02 / 40 45-0  
E-Mail: [info@wera.de](mailto:info@wera.de)

**Long design**



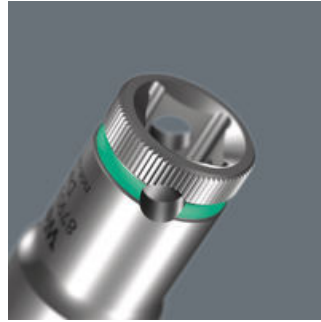
Thanks to the long design of the sockets, even couplings in tight spaces can be reached. Screwdriving at protruding thread rods can also be possible.

**Profile-friendly power transmission**



The hexagon profile offers the transmission of high forces and loads the edges of the bolt or the screw head less than a double hexagon profile. Fine-toothed ratchets also make use of a double hexagon profile superfluous, even in confined spaces, thanks to their small return angle.

**Knurling**



Knurling on lower end for more grip when used manually.

**Chrome vanadium steel**



The insert tools are suitable for high loads thanks to their chrome-vanadium steel design.

**Take it easy tool finder system**



Take it easy tool finder system - with profile and size colour-coding for quick and easy tool selection. Colour-coded system for hexagon drive screws (L-Keys, Zyklop bit sockets), external hex drive screws and nuts (Joker wrenches, Zyklop sockets and Zyklop bit sockets with holding function), and TORX® drive screws (L-Keys, Zyklop bit sockets).





**Web link**

<https://www.wera.de/en/05004535001>

Wera - 8790 HMB Deep  
05004535001 - 4013288210432

Wera Werkzeuge GmbH  
Korzter Straße 21-25  
D-42349 Wuppertal  
Tel: +49 (0)2 02 / 40 45-0  
E-Mail: [info@wera.de](mailto:info@wera.de)

## Further versions in this product family:

|                    |                     |  |  |  |  |
|--------------------|---------------------|---|---|---|---|
|                    |                     | mm  | mm  | mm  | mm  |
| 05004530001        | leuchtpink_232C     | 8.0   | 64.0  | 12.2  | 17.0  |
| 05004531001        | gruen_363C          | 9.0   | 64.0  | 13.5  | 17.0  |
| 05004532001        | leuchtgelb_yellowC  | 10.0  | 64.0  | 14.5  | 17.0  |
| 05004533001        | cyan_2985C          | 11.0  | 64.0  | 15.7  | 17.0  |
| 05004534001        | schwarz_blackC      | 12.0  | 64.0  | 16.5  | 18.0  |
| <b>05004535001</b> | <b>tuerkis_339C</b> | <b>13.0</b>   | <b>64.0</b>   | <b>19.0</b>   | <b>17.0</b>   |
| 05004536001        | pink_241C           | 14.0  | 64.0  | 20.0  | 18.0  |
| 05004537001        | weiss               | 15.0  | 64.0  | 22.0  | 20.0  |
| 05004538001        | violett_2735C       | 16.0  | 64.0  | 22.0  | 20.0  |
| 05004539001        | rot_200C            | 17.0  | 64.0  | 24.0  | 22.0  |
| 05004540001        | leuchtgruen_375C    | 18.0  | 64.0  | 26.0  | 23.0  |
| 05004541001        | blau_307C           | 19.0  | 64.0  | 26.0  | 23.0  |
| 05004542001        | leuchtpink_232C     | 20.0  | 64.0  | 28.0  | 25.0  |
| 05004543001        | gruen_363C          | 21.0  | 64.0  | 28.0  | 25.0  |
| 05004544001        | gelb_123C           | 22.0  | 64.0  | 30.0  | 26.0  |

## Web link

<https://www.wera.de/en/05004535001>

Wera - 8790 HMB Deep  
 05004535001 - 4013288210432

Wera Werkzeuge GmbH  
 Korzter Straße 21-25  
 D-42349 Wuppertal  
 Tel: +49 (0)2 02 / 40 45-0  
 E-Mail: info@wera.de