



Post Office Box 97
 Benton Harbor, Michigan
 Ph: 269/926-6171
 Fax: 269/925-8288

PART NUMBER:
STD121

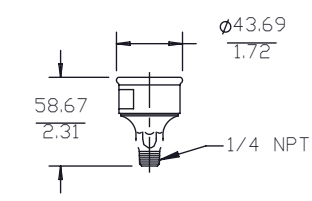
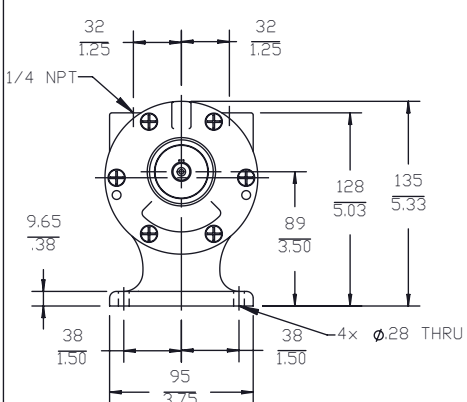
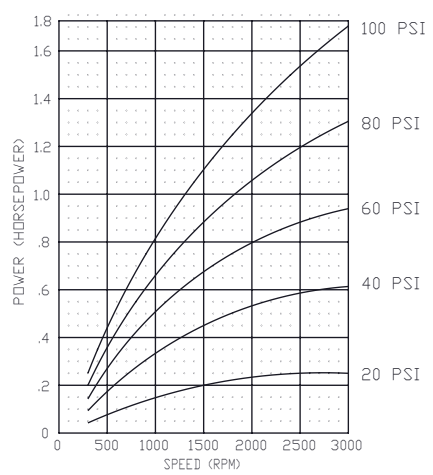
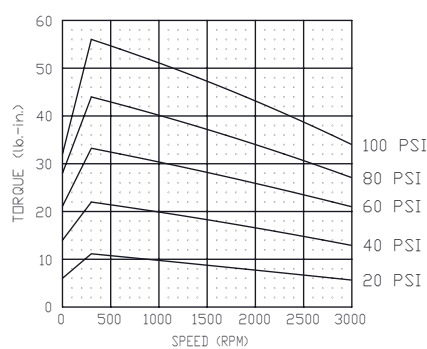
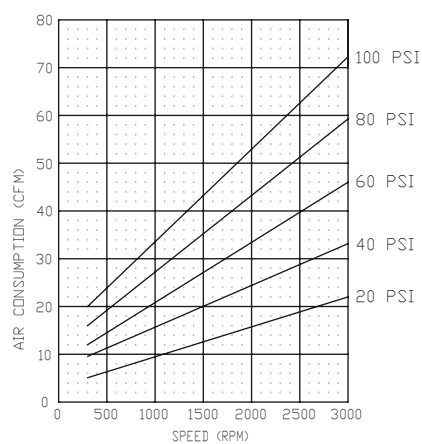
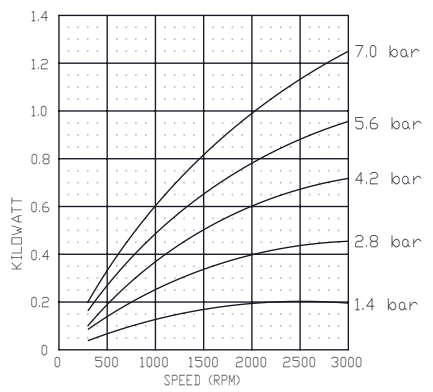
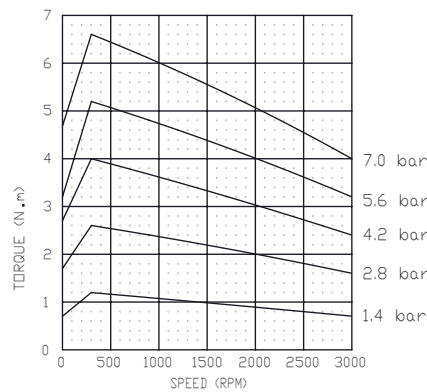
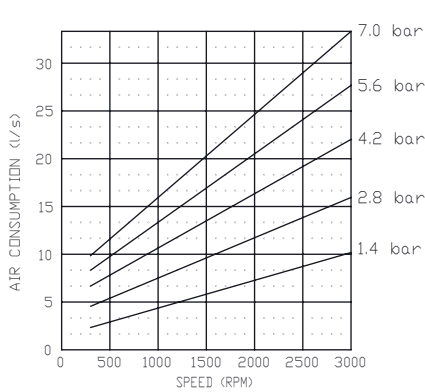
REVISION:
H

Model Number	MAX. PRESS.		MAX. SPEED	HP	kW	Net Wt.	
	bar.	PSI				lbs.	kg
4AM-FRV-13A	7.0	100	3,000 RPM	1.7	1.25	7.5	3.4
4AM-FRV-13C	7.0	100	3,000 RPM	1.7	1.25	7.5	3.4
4AM-FRV-13H	7.0	100	3,000 RPM	1.7	1.25	7.5	3.4
4AM-FRV-63A	7.0	100	3,000 RPM	1.7	1.25	7.5	3.4

SOUND LEVEL 87 dB(A) MAX.
 NORMAL AMBIENT +1°C. - 120°C.
 RELATIVE HUMIDITY 0% - 100%
 ENVIRONMENT HAZARDOUS AMBIENT COMBUSTIBLE
GAS AND DUST +1°C TO +40°C

CONFORMS TO EUROPEAN STANDARD EN13463-1 NON-ELECTRICAL
 EQUIPMENT FOR EXPLOSIVE ATMOSPHERES GROUP II CAT 2 (GAS & DUST)
 PROTECTED BY CONSTRUCTION (SURFACE TEMP RATED 135±C)

NOTES:
 1) TECHNICAL DATA SUBJECT TO CHANGE WITHOUT NOTICE.
 2) DIMENSIONS ARE FOR REFERENCE USE ONLY.



MUFFLER ASM.
 (SHIPPED UNATTACHED)
 4AM-FRV-13A NOT INCLUDED

