



Post Office Box 97
 Benton Harbor, Michigan
 Ph: 269/926-6171
 Fax: 269/925-8288

PART NUMBER:

STD111

REVISION:

J

Model Number	MAX. PRESS.		MAX. SPEED	HP	kW	Net Wt.	
	bar.	PSI				lbs.	kg
1AM-NCC-11	7.0	100	10,000 RPM	.42	0.30	2	0.9
1AM-NCC-12	7.0	100	10,000 RPM	.42	0.30	2	0.9
* 1AM-NCC-12A	7.0	100	10,000 RPM	.42	0.30	2	0.9
1AM-NCW-14	7.0	100	10,000 RPM	.42	0.30	2	0.9
1AM-NRV-39A	7.0	100	10,000 RPM	.42	0.30	2	0.9
1AM-NRV-63A	7.0	100	10,000 RPM	.42	0.30	2	0.9
1AM-NCW-14C	7.0	100	10,000 RPM	.42	0.30	2	0.9

SOUND LEVEL 78 dB(A) MAX.

NORMAL AMBIENT +1°C. - 120°C.

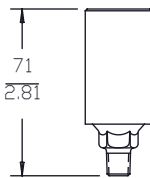
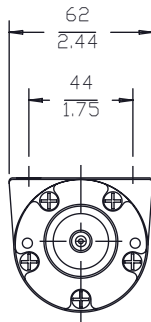
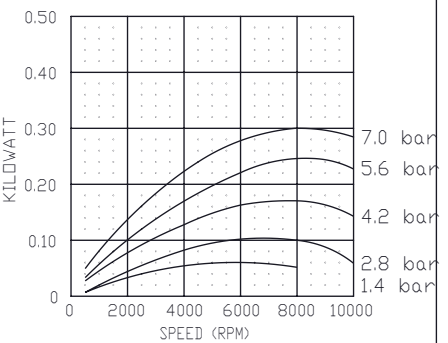
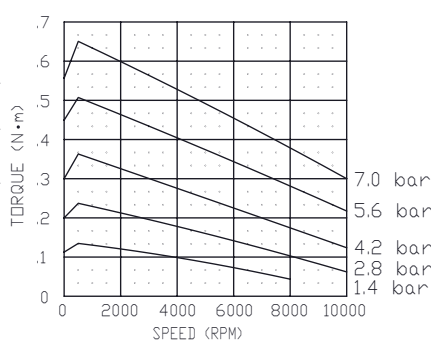
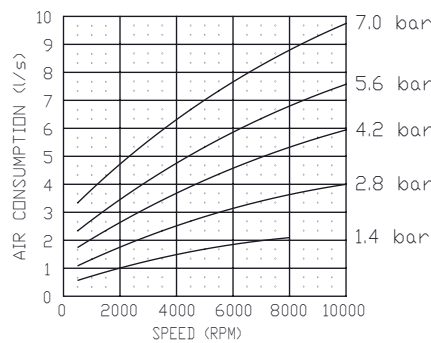
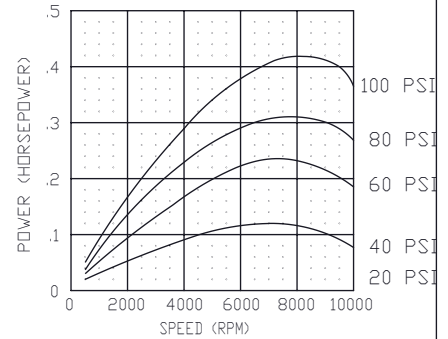
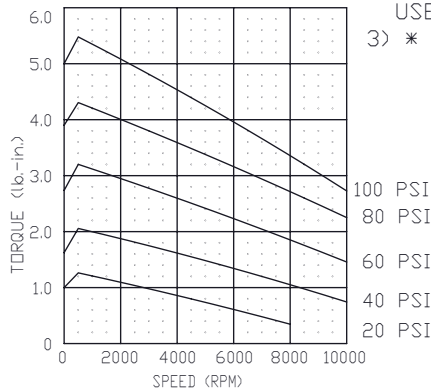
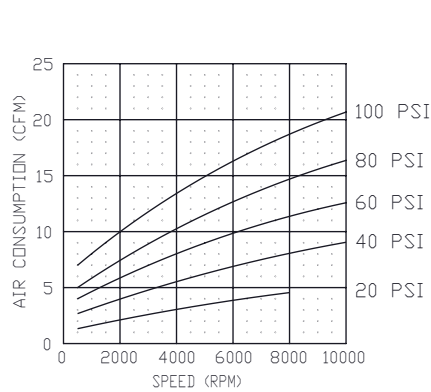
RELATIVE HUMIDITY 0% - 100%

ENVIRONMENT HAZARDOUS AMBIENT COMBUSTIBLE
GAS AND DUST +1°C TO +40°C

CONFORMS TO EUROPEAN STANDARD EN13463-1
 NON-ELECTRICAL EQUIPMENT FOR EXPLOSIVE
 ATMOSPHERES GROUP II CAT 2 (GAS & DUST),
 PROTECTED BY CONSTRUCTION (SURFACE TEMP. RATED 135±C).

NOTES:

- 1) TECHNICAL DATA SUBJECT TO CHANGE WITHOUT NOTICE.
- 2) ALL DIMENSIONS ARE FOR REFERENCE USE ONLY.
- 3) * DENOTES INACTIVE.



MUFFLER ASM.
 (UNATTACHED)
 1AM-NCC-11, 1AM-NCC-12A
 EXCLUDED

