

Form 5 conduit outlet bodies, covers & gaskets – malleable iron

Applications:

Form 5 malleable iron conduit bodies are used in conduit systems to:

- Act as pull outlets for conductors being installed
- Provide openings for making splices and taps in conductors
- Act as mounting outlets for lighting fixtures and wiring devices
- Connect conduit sections
- Provide taps for branch conduit runs
- Make 90 degree bends in conduit runs
- Provide for access to conductors for maintenance and future system changes

Features:

- Interchangeable with Appleton Form 35 conduit bodies
- Built-in rollers on 1 1/4" to 4" C and LB bodies to facilitate wire pulling
- Smooth and rounded integral bushings for protection of wire insulation
- Solid neoprene gaskets may be converted to open type by pulling out perforated center section
- Stainless steel cover screws
- Domed sheet steel covers provide additional cubic capacity
- Integral gasket cover provides NEMA 4 rating

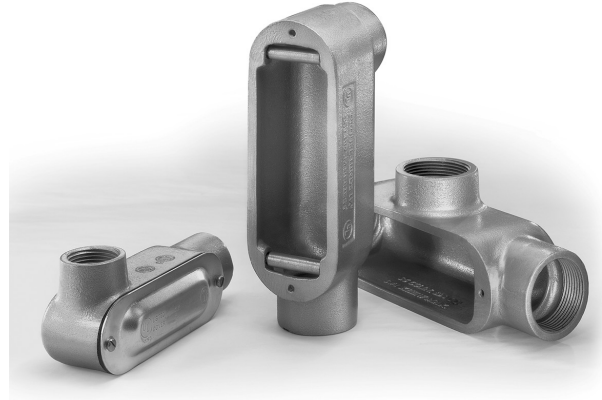
Certifications and compliances:

- UL File No. E-15022
- UL Standard 514B
- cUL/CSA to CSA Standard C22.2 No. 18
- Suitable for NEMA 4 (1/2" to 3" rigid bodies with integral cover)

Standard materials:

- Bodies – malleable iron
- Gaskets – neoprene
- Covers – sheet steel or malleable
- Cover screws – stainless steel

Form 35 is a registered trademark of Appleton Electric/EGS.



Form 5

Standard finishes:

- Malleable iron – electrogalvanized and aluminum acrylic paint
- Neoprene – natural
- Sheet steel – electrogalvanized
- Stainless steel – natural

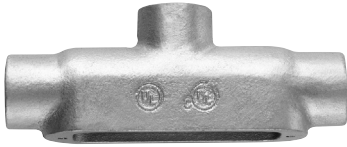
Options:

Description	Suffix
• Hot dip galvanized	HDG

Form 5

Conduit outlet bodies, covers & gaskets – malleable iron

TYPE TB



Cat. #	Size	Internal vol. in cu. in.	Unit qty.	Wt. lbs. per 100	Max. no. of conductors
TB50M	1/2"	6.0	10	88	N/A
TB75M	3/4"	9.5	10	120	3 #6 AWG
TB100M	1"	15.0	10	197	3 #6 AWG
TB125M	1 1/4"	33.0	5	342	3 #6 AWG
TB150M	1 1/2"	36.0	5	420	3 #6 AWG
TB200M	2"	76.0	1	691	3 #1/0 XHHW

TYPE X



Cat. #	Size	Internal vol. in cu. in.	Unit qty.	Wt. lbs. per 100	Max. no. of conductors
X50M	1/2"	6.0	10	139	N/A
X75M	3/4"	9.5	10	172	3 #6 AWG
X100M	1"	15.0	10	247	3 #4 XHHW
X125M	1 1/4"	33.0	5	416	3 #2 XHHW
X150M	1 1/2"	36.0	5	463	3 #1 XHHW
X200M	2"	76.0	1	833	3 #2/0 XHHW

SHEET STEEL COVERS



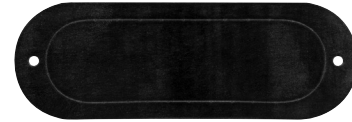
Cat. #	Size	Unit qty.	Wt. lbs. per 100
K50S	1/2"	50	9
K75S	3/4"	50	13
K100S	1"	25	19
K125S	1 1/4" and 1 1/2"	20	31
K200S	2"	5	50
K250S	2 1/2" and 3"	5	94
K350S	3 1/2" and 4"	5	138

CAST IRON COVERS



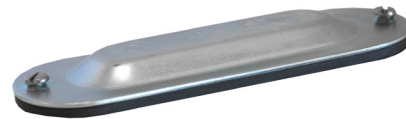
Cat. #	Size	Unit qty.	Wt. lbs. per 100
K50CM	1/2"	50	23
K75CM	3/4"	50	31
K100CM	1"	25	41
K125CM	1 1/4" and 1 1/2"	20	91
K200CM	2"	5	208
K250CM	2 1/2" and 3"	5	358
K350CM	3 1/2" and 4"	5	550

NEOPRENE GASKETS – PERFORATED CENTER



Cat. #	Size	Unit qty.	Wt. lbs. per 100
GK50N	1/2"	100	2.0
GK75N	3/4"	100	2.0
GK100N	1"	50	2.9
GK125N	1 1/4" and 1 1/2"	25	5.0
GK200N	2"	25	8.0
GK250N	2 1/2" and 3"	25	16.0
GK350N	3 1/2" and 4"	25	26.4

INTEGRAL GASKET COVER – SHEET STEEL



Cat. #	Size	Unit qty.	Wt. lbs. per 100
K50SG	1/2"	50	14
K75SG	3/4"	50	16
K100SG	1"	25	46
K125SG	1 1/4" and 1 1/2"	20	62
K200SG	2"	5	70
K250SG	2 1/2" and 3"	5	190
K350SG	3 1/2" and 4"	5	340

1/2" - 3" are NEMA 4 rated.

Form 5