

Lighting Facts Per Bulb, **Brightness** 120 lumens, **Estimated Yearly Energy Cost** \$0.14 (Based on 3 hrs/day, 11¢/kWh. Cost depends on rates and use), **Life** 13.7 years (Based on 3 hrs/day), **Energy Used** 1.2 watts, **Light Appearance** 3000 K

LIMITED WARRANTY: Philips warrants that this bulb will be free from defects in material and workmanship and will operate for 3 years based on up to 3 hours average usage per day/7 days per week, when used as directed. If this bulb does not conform to the warranty, Philips will send you, at its election, a replacement bulb or refund your original purchase price upon receipt of the returned bulb, register receipt and proof of purchase. Please call our toll-free number, write to Philips or send an email at the website below to find out how to return the bulb. This limited warranty does not cover bulbs subject to accident, neglect, abuse, misuse or acts of God. REPLACEMENT OR REFUND IS YOUR SOLE REMEDY. EXCEPT TO THE EXTENT PROHIBITED BY APPLICABLE LAW, ANY IMPLIED WARRANTIES ARE LIMITED IN DURATION TO THE DURATION OF THIS WARRANTY. LIABILITY FOR INCIDENTAL OR CONSEQUENTIAL DAMAGES IS HEREBY EXPRESSLY EXCLUDED. Some states do not allow exclusion of incidental or consequential damages, so the above limitation or exclusion may not apply to you. This warranty gives you specific legal rights, and you may also have other rights which vary from state to state.

*At \$0.11 per kWh, this 1.2 watt, 120 lumen, LED T5 Wedge Capsule uses \$1.98 of electricity over its 15,000 hour life. This is a \$9.57 savings when compared to the \$11.55 required to run a 7 watt, 120 lumen, incandescent T5 Wedge Capsule over the same period. Actual savings will vary depending on cost per kWh.

**LED lifetime means the length of time (in years) until half of the LED light sources maintain at least 70% of their initial lumen output (B50L70), where the lamp is used on average 3 hours/day.

†Ideal for use in applications where an Incandescent T5 Wedge Base 12V bulb is used.

WARNINGS AND CAUTIONS: Not suitable for use with dimmers. Suitable for use in open fixtures (luminaires). This device is not intended for use with emergency exit fixtures or emergency lights. Risk of electric shock - Do not use where directly exposed to water. Before replacing, turn off power and let lamp cool to avoid electrical shock or burn. Only install in operating environments between -4°F and +95°F (-20°C and +35°C).

NOTES: This device complies with Part15 of the FCC Rules. Operation is subject to the following two conditions: (1) This device may not cause harmful interference, and (2) This device must accept any interference received, including interference that may cause undesired operation.

Any Changes or modifications not expressly approved by the party responsible for compliance could void the user's authority to operate the equipment.

This Class B complies with Canadian ICES-005.

Información sólo para el mercado mexicano

Lámpara LED Direccional bulbo T5 1.2W
Tensión Eléctrica 12V~
Frecuencia 60Hz
Corriente Eléctrica 200mA
Importado y/o Distribuido por:
PHILIPS MEXICANA S.A. DE C.V. Av. La Palma No. 6
Col. San Fernando La Herradura
Huixquilucan Estado de México CP. 52784
R.F.C. PME-620620-E84

Línea de Atención al Cliente

01800 508 9000 | (55) 5269 9139

smartlight.mexico@philips.com

Garantía 3 años, para términos y condiciones consultar el siguiente link:

<http://www.lighting.philips.com.mx/connect/garantias.wpd>

Ensamblado en alguno de los siguientes países:
China y/o Mexico

Philips Lighting North America Corporation

200 Franklin Square Drive

Somerset, NJ 08873, USA

Questions or Comments:

1-800-555-0050 www.philips.com

Made or assembled in one or more of the following countries: China, Mexico

3235 827027 01

Ordering Code: BCI.2T5/AMB/830/ND Wedge 12V 2PK

Model: 9290012369

PROOF OF PURCHASE
BCI.2T5/AMB/830/ND Wedge 12V 2PK



per year	Estimated Energy Cost	\$0.14
lumens	Brightness	120



Wedge Base	replaces	7W
Lasts	13+ Years	
1.2W LED	replacement	T5 Incandescent



PHILIPS

Landscaping Lighting

BACK

FRONT

PHILIPS LIGHTING USA

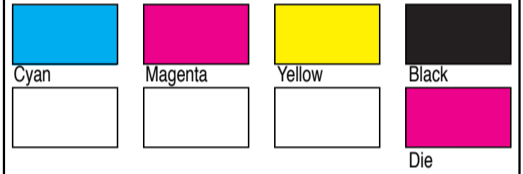
Brand	PHILIPS
Product Family	LED
Shape	T5
Wattage	1.2
Master Brand Template Ref.	3235 827008 01
SGS number	XXXXXXXX
6NC #	463448
PKG PART #	3235 827027 01
DIE #	3241 648 47451
CRC #	CRC_XXXUS

Barcode No. 0 46677463441

Operator(s) donna.raia@philips.com

VERSION No. v3

Date April 6, 2016



Date Check Check briefing Traffic

- Artwork document**
- Legend
 - 12NC
 - Barcode
 - Diecut
 - Number of colors
 - Trapping/Bleed
 - Images hires
 - Jobsizes

Approval	
<input type="checkbox"/>	QC Lithographer
<input type="checkbox"/>	Product Manager
<input type="checkbox"/>	Traffic Manager

134.0

135.0

100.0

269.0