

Overview

Steel City® metallic boxes and covers

01 Notched ears on switch boxes

Steel City® switch boxes feature a longer ear and a special notch. This provides clearance for the screws that are used to attach wall plates to GFCI or rocker-type light switches.

02 MS Bracket boxes

Mounts without the use of screws. Mounts to the open or closed side of the stud. Works on stud depths up to 4".

03 Eccentric knockouts on square boxes

Provide better contact with conduit fitting and locknut to the box, improve grounding path, stronger than 3/4" knockout. Available in all four standard-size square boxes. Improved 3/4" knockout position on square boxes. Less labor required to install 3/4" conduit to box. Square boxes also come with concentric Knockouts.

04 Raised ground screw bump in 4" square, 4¹¹/₁₆" and utility boxes

Quicker surface mounting by eliminating the need to remove the portion of the screw that threads through the back of the box. Allows for improved repositioning of grounding conductor. Ground bump standard in 2¹/₈" boxes. Ground bump standard in 1¹/₂" boxes.

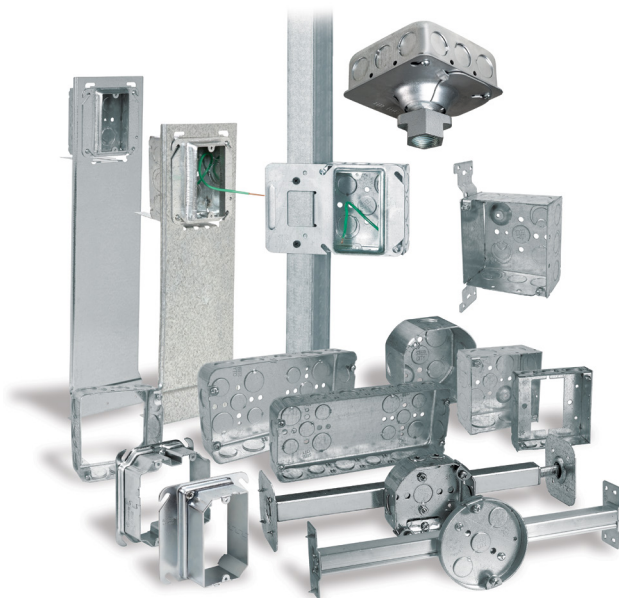
05 Pre-installed screws are packaged in raised position

Eliminates extra step of having to back out the screw during cover installation.

Steel City® is the industry-leading product line of metallic switch and outlet boxes used in electrical construction. Since 1904, Steel City® products have symbolized the highest quality standards in manufacturing and innovative design, with one of the most complete offerings available.

Steel City® products are known for their simple improvements, such as being the first box offering to standardize combination slotted/ phillips screws on all boxes. Steel City® is also recognized as a leader in design innovation, as in our new metal stud bracket.

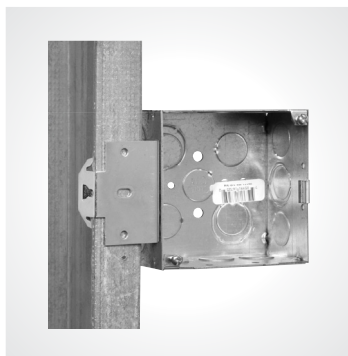
Steel City® continues to listen to contractors and responds to their ever-changing needs. Contact a Steel City® distributor nearest you to select the right product for your requirements.



Advantages of Steel City® boxes and covers



01



02



03



04



05

Steel City® switch and outlet boxes are protected from rust and corrosion by zinc-galvanizing. All clamps and other component parts are electrogalvanized separately, before assembly in the box, to ensure corrosion protection of every surface. Steel City® galvanized finish meets the requirements of Underwriters Laboratories, Inc. and Federal Specifications.

Round/octagon boxes and accessories

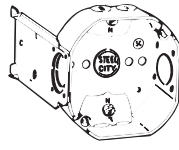
4" Octagon boxes



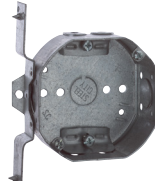
54151 N



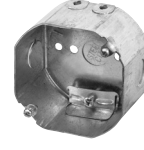
54151 NE Adjustable ears recessed 5/8"



54151 NL L bracket flush mounted



54151 NV V bracket recessed 1/2"



54171N-25



54171 NL L bracket mounted flush



54171NV-25 V bracket recessed 1/2"



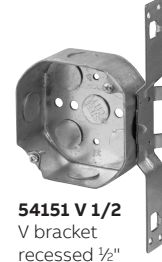
54151 1/2



54151 3/4



54151 1/2 & 3/4



54151 V 1/2 V bracket recessed 1/2"



54151 L 1/2 L bracket mounted flush



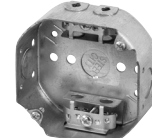
54151 J 1/2 Mounted on 6010-DW bar adjustable 10 1/2" to 18 1/2". Offset for 1/2", 3/4" or 7/8" plaster. Maximum horizontal positioning. 3/8" fixture stud.



541711/2-25



54171 1/2 3/4



54151 A



54171 3/4



54171 1



54151AV-25 V bracket recessed 1/2"



54151 AL L bracket mounted flush

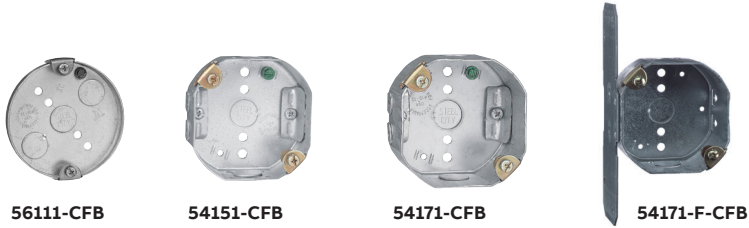
4" Octagon boxes

Cat. No.	Depth (in.)	Capacity (cu. in.)	Clamps	Brackets	Ea. side Conduit	Ea. end Conduit	Knockouts (in.)		Std. Ctn.
							Ea. end Cable	Bottom Conduit	
With non-metallic sheathed cable clamps									
54151 N	1 1/2	15.8	C-5	–	1-1/2	–	2	1-1/2	50
54151 NE	1 1/2	15.8	C-5	–	1-1/2	–	2	1-1/2	50
54151 NL	1 1/2	15.8	C-5	L	1-1/2	–	2	1-1/2	50
54151 NV	1 1/2	15.8	C-5	V	1-1/2	–	2	1-1/2	50
54171N-25	2 1/8	22.5	C-5	–	1-1/2	–	2	1-1/2	50
54171 NL	2 1/8	22.5	C-5	L	1-1/2	–	2	1-1/2	50
54171NV-25	2 1/8	22.5	C-5	V	1-1/2	–	2	1-1/2	25
With conduit KOs									
54151 1/2	1 1/2	15.8	–	–	1-1/2	1-1/2	–	5-1/2	50
54151 3/4	1 1/2	15.8	–	–	1-3/4	1-3/4	–	3-1/2 2-3/4	50
54151 1/2 & 3/4	1 1/2	15.8	–	–	1-1/2	1-3/4	–	3-1/2 2-3/4	50
54151 V 1/2	1 1/2	15.8	–	V	1-1/2	1-1/2	–	5-1/2	25
54151 L 1/2	1 1/2	15.8	–	L	1-1/2	1-1/2	–	5-1/2	25
54151 J 1/2	1 1/2	15.8	–	With bar hanger	1-1/2	1-1/2	–	4-1/2	25
541711/2-25	2 1/8	22.5	–	–	1-1/2	1-1/2	–	5-1/2	50
54171 3/4	2 1/8	22.5	–	–	1-3/4	1-3/4	–	3-1/2	25
54171 1/2 3/4	2 1/8	22.5	–	–	1-1/2	1-3/4	–	3-1/2	25
54171 1	2 1/8	22.5	–	–	1-1	1-1	–	3-1/2 2-3/4	25
With armored cable/metal-clad clamps									
54151 A	1 1/2	15.8	C-3	–	1-1/2	–	2	1-1/2	25
54151AV-25	1 1/2	15.8	C-3	V	1-1/2	–	2	1-1/2	50
54151 AL	1 1/2	15.8	C-3	L	1-1/2	–	2	1-1/2	25

50 lb. maximum loading for fixtures.

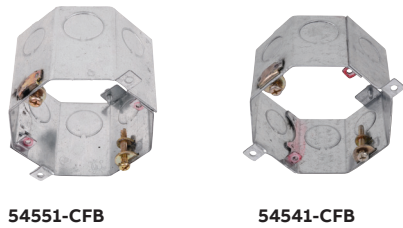
Ceiling fan boxes and accessories

Steel and non-metallic boxes and bar hangers for fan and fixture installation



Ceiling fan support boxes

Cat. No.	Capacity (cu. in.)	Description	Dimensions		New/Old Work	Std. Ctn.
			Diameter (in.)	Depth (in.)		
56111-CFB	6.0	Pan type ceiling fan box with 3 x 1/2" KOs and non-metallic sheathed cable connector	4	1/2	Both	10
54151-CFB	15.8	1 1/2" deep ceiling fan box with 3 x 1/2" KOs and clamps for non-metallic sheathed cable	4	1 1/2	New	10
54151-1/2-CFB-BP	15.8	1 1/2" deep ceiling fan box with 5 x 1/2" KOs. Bulk pack	4	1 1/2	New	50
54171-CFB	22.0	2 1/8" deep ceiling fan box with 3 x 1/2" KOs and clamps for non-metallic sheathed cable	4	2 1/8	New	10
54171-F-CFB*	22.0	As 54171-CFB, but with "F" style mounting bracket	4	2 1/8	New	10
54171-1/2-F-CFB-BP	22.0	2 1/8" deep ceiling fan box with 5 x 1/2" KOs and "F" style mounting bracket	4	2 1/8	New	50



Cat. No.	Clamps	Ears	Brackets	Knockouts (in.)				Std. Ctn.
				Ea. side Conduit	Ea. end Conduit	Ea. end Cable	Bottom Conduit	
54541-CFB	2 1/2 DP	-	Concrete ring	1/2-3/4	-	-	-	50
54551-CFB	3 DP	-	Concrete ring	1/2-3/4	-	-	-	50

Max. loads 35 lbs. fan and 50 lbs. fixture.
 Cover — CBP or CBP-3/8. 35# fan rating, 50# fixture rated.
 * Maximum load for 54171-F-CFB is 70 lbs. fan and 200 lbs. fixture.