

Steel octagon boxes & ceiling pans

4" ROUND CEILING PANS

UL LISTED



TP261



TP267



TP269



TP301

Cat. #	Description	Depth	Cubic inches	Knockouts		Fan rated (weight lbs.)	Fixture rated (weight lbs.)	Unit qty.	Wt. lbs. per 100
				Sides	Bottom				
TP261	External clamp and mounting screws (polybagged)	5/8"	8.0	-	2 - 1/2"	35	50	20	50
TP267	KOs and clamps	1/2"	6.0	-	4 - cable, 3 - 1/2"	No	50	50	39
TP269	KOs only	1/2"	6.0	-	5 - 1/2"	No	50	50	35
TP269G ^F	KOs Only	1/2"	6.0	-	5 - 1/2"	No	50	50	35
TP301 ^G	NM snap-in connector, mtg. screws, protective cover	1/2"	6.0	-	3 - 1/2"	70	90	20	51

^FCSA certified. G indicates ground screw installed.
^GTP301 fan is supported independent of outlet box.

4" OCTAGON OUTLET BOXES – 15.5 CUBIC INCH CAPACITY

1 1/2" DEEP
 FOR CONDUIT – NO CLAMPS

UL LISTED



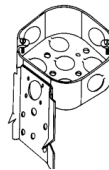
TP274, TP278,
 TP834G



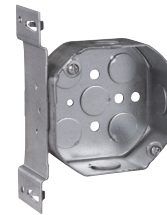
TP276



TP273



TP280



TP282



TP284, TP286

Cat. #	Description	Knockouts		Fan rated (weight lbs.)	Fixture rated (weight lbs.)	Unit qty.	Wt. lbs. per 100
		Sides	Bottom				
TP274	-	4 - 1/2"	5 - 1/2"	No	50	50	50
TP274G ^F	-	4 - 1/2"	5 - 1/2"	No	50	50	50
TP274RED ^G	-	4 - 1/2"	5 - 1/2"	No	50	50	50
TP273	Blank bottom	4 - 1/2"	-	No	50	50	51
TP276	-	4 - 3/4"	3 - 1/2", 2 - 3/4"	No	50	50	50
TP276G ^F	-	4 - 3/4"	3 - 1/2", 2 - 3/4"	No	50	50	50
TP278	-	2 - 1/2", 2 - 3/4"	3 - 1/2", 2 - 3/4"	No	50	50	50
TP278G ^F	-	2 - 1/2", 2 - 3/4"	3 - 1/2", 2 - 3/4"	No	50	50	50
TP280	"C" bracket	4 - 1/2"	5 - 1/2"	No	50	50	60
TP280G ^F	"C" bracket	4 - 1/2"	5 - 1/2"	No	50	50	60
TP282	"S" bracket, set 1/2"	3 - 1/2"	5 - 1/2"	No	50	50	58
TP282G ^F	"S" bracket, set 1/2"	3 - 1/2"	5 - 1/2"	No	50	50	58
Air plenum							
TP834 ^B	For air plenum	4 - 1/2"	5 - 1/2"	No	50	50	52
Octagon extension rings – (slot & key permit mounting without removing box screws)							
TP284 ^F	-	4 - 1/2"	-	No	50	50	36
TP286 ^F	-	2 - 1/2", 2 - 3/4"	-	No	50	50	36

^BFor air plenum (no mounting holes) - not UL Listed.
^FCSA certified. G indicates ground screw installed.
^GNot UL Listed.

Steel boxes