

A

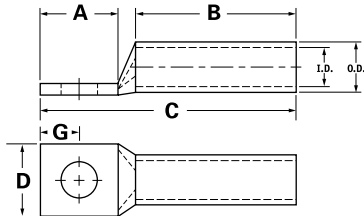
TYPE CSWS

Features

- Manufactured from high strength seamless copper tubing
- Electro-Tin plated
- Chamfered entry
- Color coded
- Suitable for use in circuits rated 35KV or less, proper high voltage spacing and insulation techniques must be used
- UL Listed and CSA Certified with ILSCO and major competitor's compression tools
- UL467 Listed 500 kcmil - 8 AWG , #8 - #2 SOL
- For direct bury 500 kcmil - 10
- Rated to 90° C

Benefits

- Offers maximum conductivity and excellent crimping characteristics
- Provides low contact resistance
- For easy conductor insertion
- Identifies the proper compression die
- Application versatility
- Reduces inventory requirements
- For grounding and bonding applications



Catalog Number	Wire Size	Alt Wire Size	Expanded* Wire Range	Bolt Size	Stud Hole Dia.	Dimensions					Die Color Code	Die Index	O.D.	I.D.
						A	B	C	D	G				
CSWS-2/0-10	2/0 AWG	1/0 FLEX	2/0-4 AWG	10	0.219	0.562	0.750	1.708	0.811	0.258	Black	I-45	0.562	0.437
CSWS-2/0-14	2/0 AWG	1/0 FLEX	2/0-4 AWG	1/4	0.281	0.875	0.750	2.021	0.811	0.320	Black	I-45	0.562	0.437
CSWS-2/0-516	2/0 AWG	1/0 FLEX	2/0-4 AWG	5/16	0.343	0.875	0.750	2.021	0.811	0.352	Black	I-45	0.562	0.437
CSWS-2/0-38	2/0 AWG	1/0 FLEX	2/0-4 AWG	3/8	0.406	0.875	0.750	2.021	0.811	0.414	Black	I-45	0.562	0.437
CSWS-2/0-12	2/0 AWG	1/0 FLEX	2/0-4 AWG	1/2	0.562	1.250	0.750	2.396	0.811	0.546	Black	I-45	0.562	0.437
CSWS-3/0-10	3/0 AWG	2/0 FLEX	3/0-2 AWG	10	0.219	0.562	0.750	1.751	0.885	0.258	Orange	I-50	0.609	0.484
CSWS-3/0-14	3/0 AWG	2/0 FLEX	3/0-2 AWG	1/4	0.281	0.875	0.750	2.064	0.885	0.320	Orange	I-50	0.609	0.484
CSWS-3/0-516	3/0 AWG	2/0 FLEX	3/0-2 AWG	5/16	0.343	0.875	0.750	2.064	0.885	0.352	Orange	I-50	0.609	0.484
CSWS-3/0-38	3/0 AWG	2/0 FLEX	3/0-2 AWG	3/8	0.406	0.875	0.750	2.064	0.885	0.414	Orange	I-50	0.609	0.484
CSWS-3/0-12	3/0 AWG	2/0 FLEX	3/0-2 AWG	1/2	0.562	1.250	0.750	2.439	0.885	0.546	Orange	I-50	0.609	0.484
CSWS-4/0-14	4/0 AWG	3/0 FLEX	4/0-1 AWG	1/4	0.281	0.875	0.875	2.241	0.999	0.320	Purple	I-54	0.687	0.546
CSWS-4/0-516	4/0 AWG	3/0 FLEX	4/0-1 AWG	5/16	0.343	0.875	0.875	2.241	0.999	0.352	Purple	I-54	0.687	0.546
CSWS-4/0-38	4/0 AWG	3/0 FLEX	4/0-1 AWG	3/8	0.406	0.875	0.875	2.241	0.999	0.414	Purple	I-54	0.687	0.546
CSWS-4/0-12	4/0 AWG	3/0 FLEX	4/0-1 AWG	1/2	0.562	1.250	0.875	2.616	0.999	0.546	Purple	I-54	0.687	0.546
CSWS-250-516	250kcmil	4/0 FLEX	250kcmil - 1/0 AWG	5/16	0.343	0.875	1.063	2.469	1.088	0.352	Yellow	I-62	0.750	0.593
CSWS-250-38	250kcmil	4/0 FLEX	250kcmil - 1/0 AWG	3/8	0.406	0.875	1.063	2.469	1.088	0.414	Yellow	I-62	0.750	0.593
CSWS-250-12	250kcmil	4/0 FLEX	250kcmil - 1/0 AWG	1/2	0.562	1.250	1.063	2.844	1.088	0.546	Yellow	I-62	0.750	0.593
CSWS-300-516	300kcmil	250 G,H FLEX	300kcmil - 2/0 AWG	5/16	0.343	0.875	1.063	2.525	1.189	0.352	White	I-66	0.812	0.660
CSWS-300-38	300kcmil	250 G,H FLEX	300kcmil - 2/0 AWG	3/8	0.406	0.875	1.063	2.525	1.189	0.414	White	I-66	0.812	0.660
CSWS-300-12	300kcmil	250 G,H FLEX	300kcmil - 2/0 AWG	1/2	0.562	1.250	1.063	2.900	1.189	0.546	White	I-66	0.812	0.660
CSWS-300-58	300kcmil	250 G,H FLEX	300kcmil - 2/0 AWG	5/8	0.656	1.437	1.063	3.087	1.189	0.671	White	I-66	0.812	0.660
CSWS-350-38	350kcmil	250 I,K,M FLEX 262.2 DLO	350kcmil - 3/0 AWG	3/8	0.406	0.875	1.063	2.561	1.291	0.414	Red	I-71	0.890	0.703
CSWS-350-12	350kcmil	250 I,K,M FLEX 262.2 DLO	350kcmil - 3/0 AWG	1/2	0.562	1.250	1.063	2.936	1.291	0.546	Red	I-71	0.890	0.703
CSWS-350-58	350kcmil	250 I,K,M FLEX 262.2 DLO	350kcmil - 3/0 AWG	5/8	0.656	1.437	1.063	3.123	1.291	0.671	Red	I-71	0.890	0.703
CSWS-400-38	400kcmil	300 G,H,I,K,M FLEX 313.1 DLO	400kcmil - 4/0 AWG	3/8	0.406	0.875	1.188	2.730	1.365	0.414	Blue	I-76	0.937	0.750
CSWS-400-12	400kcmil	300 G,H,I,K,M FLEX 313.1 DLO	400kcmil - 4/0 AWG	1/2	0.562	1.250	1.188	3.105	1.365	0.546	Blue	I-76	0.937	0.750
CSWS-400-58	400kcmil	300 G,H,I,K,M FLEX 313.1 DLO	400kcmil - 4/0 AWG	5/8	0.656	1.437	1.188	3.292	1.365	0.671	Blue	I-76	0.937	0.750

All wire sizes, unless noted otherwise, are American Wire Gauge (AWG)

* When installed with specified dieless tools

See pages 87 to 97 for complete tooling information.

For Bent Tangs change the 4th letter to a B and add "-4" for 45 deg. or "-9" for 90 deg.

Tested to UL 486A/B, UL File E6207

Information Sheet (Series CS, CL)

Compression Connectors for Fine Strand Copper Wire Only (CU9)

WARNING! Do Not Use With Aluminum Wire



Lug Size	Fine Strand Wire Size	Capr Code	Die Index	Manual Hand Tools		Hydraulic Tools		ILSCO TOOLS		COMPETITORS TOOLS		UTILCO		Fine Strand Wire Size	Lug Size
				Die Index	Capr Code	Die Index	Capr Code	Die Index	Capr Code	Die Index	Capr Code	Die Index	Capr Code		
8 **	8	Rod	21	Blue	2	1	1	1	1	1	1	1	21	8	6 **
6 **	6	Black	24	Blue	2	1	1	1	1	1	1	1	24	6	6 **
4	4	White	29	Green	2	1	1	1	1	1	1	1	29	4	3 **
3 **	3	White	31	Green	2	1	1	1	1	1	1	1	31	3	3 **
10 **	10	Black	42	Black	4	1	1	1	1	1	1	1	42	10	10 **
20 **	20	Black	45	Black	4	1	1	1	1	1	1	1	45	20	20 **
30 **	30	Orange	50	Black	3	1	1	1	1	1	1	1	50	30	30 **
40 **	40	Orange	55	Black	3	1	1	1	1	1	1	1	55	40	40 **
50 **	50	Orange	60	Black	3	1	1	1	1	1	1	1	60	50	50 **
60 **	60	Orange	62	Black	3	1	1	1	1	1	1	1	62	60	60 **
70 **	70	White	65	Black	3	1	1	1	1	1	1	1	65	70	70 **
80 **	80	White	71	Black	3	1	1	1	1	1	1	1	71	80	80 **
90 **	90	White	76	Black	3	1	1	1	1	1	1	1	76	90	90 **
100 **	100	White	87	Black	3	1	1	1	1	1	1	1	87	100	100 **
600	400-444	Green	84	Green	2	2	2	2	2	2	2	2	84	400-444	600
650	400-444	Green	84	Green	2	2	2	2	2	2	2	2	84	400-444	600
700	500-535	Black	86	Black	2	2	2	2	2	2	2	2	86	500-535	700
750	600-646	Black	106	Black	3	2	2	2	2	2	2	2	106	600-646	750
1000	750-777	White	125	White	3	2	2	2	2	2	2	2	125	750-777	1000

Lug Size	Fine Strand Wire Size	Capr Code	Die Index	Manual Hand Tools		Hydraulic Tools		ILSCO TOOLS		COMPETITORS TOOLS		UTILCO		Fine Strand Wire Size	Lug Size
				Die Index	Capr Code	Die Index	Capr Code	Die Index	Capr Code	Die Index	Capr Code	Die Index	Capr Code		
8 **	8	Rod	21	Blue	2	1	1	1	1	1	1	1	21	8	6 **
6 **	6	Black	24	Blue	2	1	1	1	1	1	1	1	24	6	6 **
4	4	White	29	Green	2	1	1	1	1	1	1	1	29	4	3 **
3 **	3	White	31	Green	2	1	1	1	1	1	1	1	31	3	3 **
10 **	10	Black	42	Black	4	1	1	1	1	1	1	1	42	10	10 **
20 **	20	Black	45	Black	4	1	1	1	1	1	1	1	45	20	20 **
30 **	30	Orange	50	Black	3	1	1	1	1	1	1	1	50	30	30 **
40 **	40	Orange	55	Black	3	1	1	1	1	1	1	1	55	40	40 **
50 **	50	Orange	60	Black	3	1	1	1	1	1	1	1	60	50	50 **
60 **	60	Orange	62	Black	3	1	1	1	1	1	1	1	62	60	60 **
70 **	70	White	65	Black	3	1	1	1	1	1	1	1	65	70	70 **
80 **	80	White	71	Black	3	1	1	1	1	1	1	1	71	80	80 **
90 **	90	White	76	Black	3	1	1	1	1	1	1	1	76	90	90 **
100 **	100	White	87	Black	3	1	1	1	1	1	1	1	87	100	100 **
600	400-444	Green	84	Green	2	2	2	2	2	2	2	2	84	400-444	600
650	400-444	Green	84	Green	2	2	2	2	2	2	2	2	84	400-444	600
700	500-535	Black	86	Black	2	2	2	2	2	2	2	2	86	500-535	700
750	600-646	Black	106	Black	3	2	2	2	2	2	2	2	106	600-646	750
1000	750-777	White	125	White	3	2	2	2	2	2	2	2	125	750-777	1000

Lug Size	Fine Strand Wire Size	Capr Code	Die Index	Manual Hand Tools		Hydraulic Tools		ILSCO TOOLS		COMPETITORS TOOLS		UTILCO		Fine Strand Wire Size	Lug Size
				Die Index	Capr Code	Die Index	Capr Code	Die Index	Capr Code	Die Index	Capr Code	Die Index	Capr Code		
8 **	8	Rod	21	Blue	2	1	1	1	1	1	1	1	21	8	6 **
6 **	6	Black	24	Blue	2	1	1	1	1	1	1	1	24	6	6 **
4	4	White	29	Green	2	1	1	1	1	1	1	1	29	4	3 **
3 **	3	White	31	Green	2	1	1	1	1	1	1	1	31	3	3 **
10 **	10	Black	42	Black	4	1	1	1	1	1	1	1	42	10	10 **
20 **	20	Black	45	Black	4	1	1	1	1	1	1	1	45	20	20 **
30 **	30	Orange	50	Black	3	1	1	1	1	1	1	1	50	30	30 **
40 **	40	Orange	55	Black	3	1	1	1	1	1	1	1	55	40	40 **
50 **	50	Orange	60	Black	3	1	1	1	1	1	1	1	60	50	50 **
60 **	60	Orange	62	Black	3	1	1	1	1	1	1	1	62	60	60 **
70 **	70	White	65	Black	3	1	1	1	1	1	1	1	65	70	70 **
80 **	80	White	71	Black	3	1	1	1	1	1	1	1	71	80	80 **
90 **	90	White	76	Black	3	1	1	1	1	1	1	1	76	90	90 **
100 **	100	White	87	Black	3	1	1	1	1	1	1	1	87	100	100 **
600	400-444	Green	84	Green	2	2	2	2	2	2	2	2	84	400-444	600
650	400-444	Green	84	Green	2	2	2	2	2	2	2	2	84	400-444	600
700	500-535	Black	86	Black	2	2	2	2	2	2	2	2	86	500-535	700
750	600-646	Black	106	Black	3	2	2	2	2	2	2	2	106	600-646	750
1000	750-777	White	125	White	3	2	2	2	2	2	2	2	125	750-777	1000

Lug Size	Fine Strand Wire Size	Capr Code	Die Index	Manual Hand Tools		Hydraulic Tools		ILSCO TOOLS		COMPETITORS TOOLS		UTILCO		Fine Strand Wire Size	Lug Size
				Die Index	Capr Code	Die Index	Capr Code	Die Index	Capr Code	Die Index	Capr Code	Die Index	Capr Code		
8 **	8	Rod	21	Blue	2	1	1	1	1	1	1	1	21	8	6 **
6 **	6	Black	24	Blue	2	1	1	1	1	1	1	1	24	6	6 **
4	4	White	29	Green	2	1	1	1	1	1	1	1	29	4	3 **
3 **	3	White	31	Green	2	1	1	1	1	1	1	1	31	3	3 **
10 **	10	Black	42	Black	4	1	1	1	1	1	1	1	42	10	10 **
20 **	20	Black	45	Black	4	1	1	1	1	1	1	1	45	20	20 **
30 **	30	Orange	50	Black	3	1	1	1	1	1	1	1	50	30	30 **
40 **	40	Orange	55	Black	3	1	1	1	1	1	1	1	55	40	40 **
50 **	50	Orange	60	Black	3	1	1	1	1	1	1	1	60	50	50 **
60 **	60	Orange	62	Black	3	1	1	1	1	1	1	1	62	60	60 **
70 **	70	White	65	Black	3	1	1	1	1	1	1	1	65	70	70 **
80 **	80	White	71	Black	3	1	1	1	1	1	1	1	71	80	80 **
90 **	90	White	76	Black	3	1	1	1	1	1	1	1	76	90	90 **
100 **	100	White	87	Black	3	1	1	1	1	1	1	1	87	100	100 **
600	400-444	Green	84	Green	2	2	2	2	2	2	2	2	84	400-444	600
650	400-444	Green	84	Green	2	2	2	2	2	2	2	2	84	400-444	600
700	500-535	Black	86	Black	2	2	2	2	2	2	2	2	86	500-535	700
750	600-646	Black	106	Black	3	2	2	2	2	2	2	2	106	600-646	750
1000	750-777	White	125	White	3	2	2	2	2	2	2	2	125	750-777	1000

Lug Size	Fine Strand Wire Size	Capr Code	Die Index	Manual Hand Tools		Hydraulic Tools		ILSCO TOOLS		COMPETITORS TOOLS		UTILCO		Fine Strand Wire Size	Lug Size
				Die Index	Capr Code	Die Index	Capr Code	Die Index	Capr Code	Die Index	Capr Code	Die Index	Capr Code		
8 **	8	Rod	21	Blue	2	1	1	1	1	1	1	1	21	8	6 **
6 **	6	Black	24	Blue	2	1	1	1	1	1	1	1	24	6	6 **
4	4	White	29	Green	2	1	1	1	1	1	1	1	29	4	3 **
3 **	3	White	31	Green	2	1	1	1	1	1	1	1	31	3	3 **
10 **	10	Black	42	Black	4	1	1	1	1	1	1	1	42	10	10 **
20 **	20	Black	45	Black	4	1	1	1	1	1	1	1	45	20	20 **
30 **	30	Orange	50	Black	3										