

ART VERSION #: 3

ART REVISION DATE: 09/12/2016

FINAL ART DATE: 09/00/2016

SPEC #: A01-1116-1646 A

PART #: 3235 829554 01



**PHILIPS LIGHTING USA**

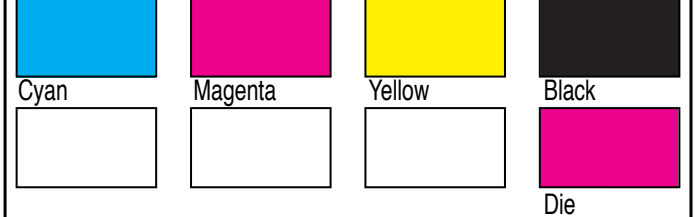
Brand	PHILIPS
Product Family	LED
Shape	PAR30L
Wattage	12W
Master Brand Template Ref.	NA
SGS number	XXXXXXX
6NC #	467829
PKG PART #	3235 829554 01
DIE #	3241 648 69331
CRC #	CRC_XXXUS

Barcode No. 046677467821

Operator(s) donna.raia@philips.com

VERSION No. **v3**

Date SEPT. 07, 2016



Date Check

Check briefing Traffic

Artwork document

Legend  Number of colors

12NC  Trapping/Bleed

Barcode  Images hires

Diecut  Jobsizes

**Approval**

QC Lithographer

Product Manager

Traffic Manager



**LIMITED WARRANTY FOR CONSUMER:** Philips warrants that this bulb will be free from defects in material and workmanship and will operate for 5 years based on up to 3 hours average usage per day/7 days per week, when used as directed. If this bulb does not conform to the warranty, Philips will send you, at its election, a replacement bulb or refund your original purchase price upon receipt of the returned bulb, register receipt and proof of purchase. Please call our toll-free number, write to Philips or send an email at the website below to find out how to return the bulb. This limited warranty does not cover bulbs subject to accident, neglect, abuse, misuse or acts of God. REPLACEMENT OR REFUND IS YOUR SOLE REMEDY EXCEPT TO THE EXTENT PROHIBITED BY APPLICABLE LAW. ANY IMPLIED WARRANTIES ARE LIMITED IN DURATION TO THE DURATION OF THIS WARRANTY. LIABILITY FOR INCIDENTAL OR CONSEQUENTIAL DAMAGES IS HEREBY EXPRESSLY EXCLUDED. Some states do not allow exclusion of incidental or consequential damages, so the above limitation or exclusion may not apply to you. This warranty gives you specific legal rights, and you may also have other rights which vary from state to state.

**LIMITED WARRANTY FOR PROFESSIONAL, INDUSTRIAL/COMMERCIAL CUSTOMERS AND APPLICATIONS:** Philips warrants that this bulb will be free from defects in material and workmanship and will operate for 3 years based on lamp operation of 12 hours average usage per day/7 days per week, when used as directed. Visit [http://www.usa.lighting.philips.com/connect/tools\\_literature/warranties.wpd](http://www.usa.lighting.philips.com/connect/tools_literature/warranties.wpd) for full details and restrictions.

**NOTES:** This device complies with Part 15 of the FCC Rules. Operation is subject to the following two conditions: (1) This device may not cause harmful interference, and (2) This device must accept any interference received, including interference that may cause undesired operation. Any changes or modifications not expressly approved by the party responsible for compliance could void the user's authority to operate the equipment. This Class B complies with Canadian ICES-005.

\*At \$0.11 per kWh, this 12 watt, 3300 candela PAR30L LED uses \$33.00 of electricity over its 25,000 hour life. This is a \$173.25 savings when compared to the \$206.25 required to run a 75 watt, 2910 candela, PAR30L halogen over the same period. Actual savings will vary depending on cost per kWh.

\*\*LED lifetime means the length of time (in years) until half of the LED light sources maintain at least 70% of their initial lumen output (B50.L70), where the lamp is used on average 3 hours/day.

**WARNINGS AND CAUTIONS:**  
Suitable for wet locations. This device is not intended for use with emergency exit fixtures or emergency lights. Suitable for use with dimmers. Visit [www.philips.com/dimmercompatibility](http://www.philips.com/dimmercompatibility) to find up-to-date dimmer and lighting control compatibility information. Risk of electric shock. This product is intended for base up operation. Before replacing, turn off power and let lamp cool to avoid electrical shock or burn. Only install in operating environments between -4°F and +113°F (-20°C and +45°C).

**PRECAUCIONES Y CUIDADOS:**  
Adecuado para espacios húmedos. Este dispositivo no está diseñado para usar como iluminación de emergencia o dentro de luminarios de señalización en salida de emergencia. Se pueden usar con atenuadores de luz. Visita [www.philips.com/dimmercompatibility](http://www.philips.com/dimmercompatibility) para encontrar la compatibilidad con atenuadores y controles de luz. Riesgo de choque eléctrico. Este producto está diseñado para operación con base hacia arriba. Antes de reemplazar, apague la corriente eléctrica y enfríe la lámpara para evitar un choque eléctrico o incendio. Solo instalar en ambientes entre -4 grados F y +113 grados F (-20 grados C y 45 grados C).

**Información sólo para el mercado mexicano - Lámpara LED Direccional PAR30L/12W**  
Tensión Eléctrica 120V~  
Frecuencia 50/60Hz  
Corriente Eléctrica 110mA  
Vida Nominal : 25,000 h  
Ensamblado en alguno de los siguientes países: México y/o China  
Contenido 1 pieza  
**Importado y/o Distribuido por:** PHILIPS MEXICANA S.A DE C.V.  
Av. La Palma No. 6  
Col. San Fernando La Herradura  
Huixquilucan Estado de México CP. 52784  
R.F.C. PME-620620-E84  
**Línea de Atención al Cliente**  
01800 508 9000 (55) 5269 9139  
[smartlight.mexico@philips.com](mailto:smartlight.mexico@philips.com)  
Garantía 5 años, para términos y condiciones consultar el siguiente link:  
<http://www.lighting.philips.com.mx/connect/garantias.wpd>

**22+** LASTS 22+ YEARS\*\*

**SAVES \$173 IN ENERGY COST\***

**INSTANT-ON**

**DIMMABLE**

**INDOOR/OUTDOOR FLOOD**

**E26 Standard**

**MEDIUM BASE**

**Lighting Facts** Per Bulb

Brightness	850 lumens
Estimated Yearly Energy Cost	\$1.45
Based on 3 hrs/day, 11¢/kWh Cost depends on rates and use	
Life	22.8 years
Based on 3 hrs/day	
Light Appearance	Warm <span style="display: inline-block; width: 50px; border-bottom: 1px solid black;"></span> Cool
Energy Used	12 watts

3235 829554 01  
Model: 9290012941  
Ordering Code: 12PAR30L/AMB/F25/830/DIM ULW  
Assembled in one or more of the following countries: China, Mexico  
Philips Lighting North America Corporation  
200 Franklin Square Drive  
Somerset, NJ 08873, USA  
Questions or Comments: 1-800-555-0050  
[www.philips.com](http://www.philips.com)

Brightness/Brillo	850 lumens/lúmenes
Estimated Energy Cost/ Costo Estimado de Energía	\$1.45 per year/por año

80CRI 3000K