

ART VERSION #: 3

ART REVISION DATE: 09/12/2016

FINAL ART DATE: 09/00/2016

SPEC #: A01-1116-1640 A

510.5

PART #: 3235 829548 01

PHILIPS LIGHTING USA

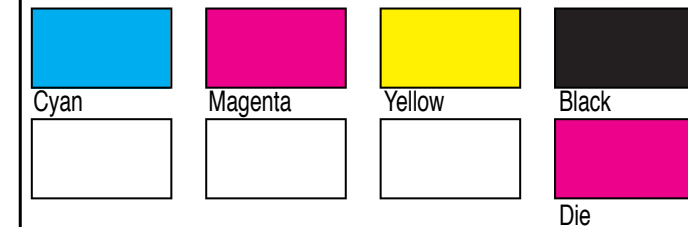
Brand	PHILIPS
Product Family	LED
Shape	Prof PAR38 Glass
Wattage	16W
Master Brand Template Ref.	New
SGS number	XXXXXXX
6NC #	467720
PKG PART #	3235 829548 01
DIE #	3241 648 04431
CRC #	CRC_XXXUS

Barcode No. 046677467722

Operator(s) donna.raia@philips.com

VERSION No. **v3**

Date Aug 29, 2016



Date Check

Check briefing Traffic

Artwork document

- Legend
- 12NC
- Barcode
- Diecut
- Number of colors
- Trapping/Bleed
- Images hires
- Jobsizes

Approval

- QC Lithographer
- Product Manager
- Traffic Manager

365.5

136

LASTS 22+ YEARS**	SAVES \$286 IN ENERGY COST*	INSTANT-ON
DIMMABLE	INDOOR/OUTDOOR FLOOD	E26 Standard

Lighting Facts Per Bulb	
Brightness	1200 lumens
Estimated Yearly Energy Cost	\$1.93
Based on 3 hrs/day, 11¢/kWh	
Cost depends on rates and use	
Life	22.8 years
Based on 3 hrs/day	
Light Appearance	Warm to Cool
2700 K	
Energy Used	16 watts

3235 829548 01
 Model: 9290012916
 Ordering Code: 16PAR38/AMB/F40/827/DIM/ULW
 Assembled in one or more of the following countries: China, Mexico
 Philips Lighting North America Corporation
 200 Franklin Square Drive
 Somerset, NJ 08873, USA
 Questions or Comments: 1-800-555-0050
 www.philips.com

WARNINGS AND CAUTIONS: Suitable for wet locations. This device is not intended for use with emergency exit fixtures or emergency lights. Suitable for use with dimmers. Visit www.philips.com/dimmercompatibility to find up-to-date dimmer and lighting control compatibility information. Risk of electric shock. This product is intended for base up operation. Before replacing, turn off power and let lamp cool to avoid electrical shock or burn. Only install in operating environments between -4°F and +113°F (-20°C and +45°C).

PRECAUCIONES Y CUIDADOS: Adecuado para espacios húmedos. Este dispositivo no está diseñado para usar como iluminación de emergencia o dentro de luminarios de señalización en salida de emergencia. Se pueden usar con atenuadores de luz. Visita www.philips.com/dimmercompatibility para encontrar la compatibilidad con atenuadores y controles de luz. Riesgo de choque eléctrico. Este producto está diseñado para operación con base hacia arriba. Antes de reemplazar, apague la corriente eléctrica y enfríe la lámpara para evitar un choque eléctrico o incendio. Solo instalar en ambientes entre -4 grados F y +113 grados F (-20 grados Centígrados y 45 grados C.)

Información sólo para el mercado Mexicano-
 Lámpara LED Direccional PAR38/16W
 Tensión Eléctrica 120V~
 Frecuencia 50/60Hz
 Corriente Eléctrica 143mA
 Vida Nominal: 25,000 h
 Ensamblado en alguno de los siguientes países:
 México y/o China
 Contenido 1 pieza
 Importado y/o Distribuido por:
 PHILIPS MEXIC ANA S.A DE C.V.
 Av. La Palma No. 6
 Col. San Fernando La Herradura
 Huixquilucan Estado de México CP 52784
 R.F.C. PME-620620-E84
 Línea de Atención al Cliente
 01800 508 9000 (55) 5269 9139
smarlightmexico@philips.com
 Garantía 5 años, para términos y condiciones consultar el siguiente link:
<http://www.lighting.philips.com.mx/connect/garantias.wpd>

LIMITED WARRANTY FOR CONSUMER: Philips warrants that this bulb will be free from defects in material and workmanship and will operate for 5 years based on up to 3 hours average usage per day/7 days per week, when used as directed. If this bulb does not conform to the warranty, Philips will send you, at its election, a replacement bulb or refund your original purchase price upon receipt of the returned bulb, register receipt and proof of purchase. Please call our toll-free number, write to Philips or send an email at the website below to find out how to return the bulb. This limited warranty does not cover bulbs subject to accident, neglect, abuse, misuse or acts of God. REPLACEMENT OR REFUND IS YOUR SOLE REMEDY, EXCEPT TO THE EXTENT PROHIBITED BY APPLICABLE LAW. ANY IMPLIED WARRANTIES ARE LIMITED IN DURATION TO THE DURATION OF THIS WARRANTY. LIABILITY FOR INCIDENTAL OR CONSEQUENTIAL DAMAGES IS HEREBY EXPRESSLY EXCLUDED. Some states do not allow exclusion of incidental or consequential damages, so the above limitation or exclusion may not apply to you. This warranty gives you specific legal rights, and you may also have other rights which vary from state to state.

LIMITED WARRANTY FOR PROFESSIONAL, INDUSTRIAL/COMMERCIAL, CUSTOMERS AND APPLICATIONS: Philips warrants that this bulb will be free from defects in material and workmanship and will operate for 3 years based on lamp operation of 12 hours average usage per day/7 days per week, when used as directed. Visit http://www.usa.lighting.philips.com/connect/tools_literature/warranties.wpd for full details and restrictions.

NOTES: This device complies with Part 15 of the FCC Rules. Operation is subject to the following two conditions: (1) This device may not cause harmful interference, and (2) This device must accept any interference received, including interference that may cause undesired operation.

Any changes or modifications not expressly approved by the party responsible for compliance could void the user's authority to operate the equipment.

This Class B complies with Canadian ICES-005.

*At \$0.11 per kWh, this 16 watt, 3500 candela PAR38 LED uses \$44.00 of electricity over its 25,000 hour life. This is a \$286.00 savings when compared to the \$330.00 required to run a 120 watt, 2231 candela, halogen PAR38 over the same period. Actual savings will vary depending on cost per kWh.

**LED lifetime means the length of time (in years) until half of the LED light sources maintain at least 70% of their initial lumen output (B50/L70), where the lamp is used on average 3 hours/day.

LISTED LED Lamp 3PM5 80CRI 2700K	



15 124 124 124 123.5

250g Duplex(CCNB)+F flute 67g