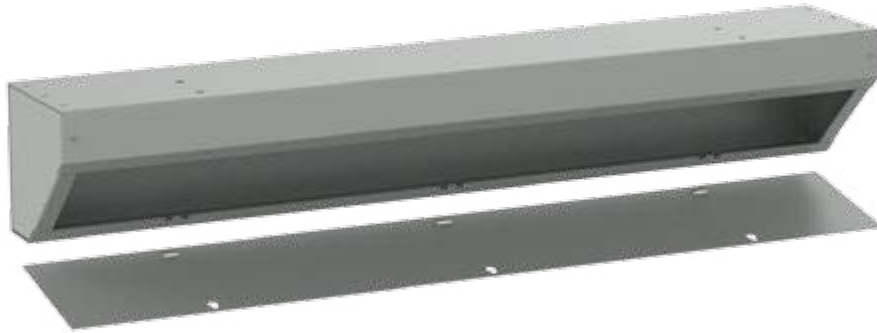


ANGLED TROUGH, NEMA TYPE 1



INDUSTRY STANDARDS

UL 870 Listed; File No. E27524
 cUL CSA C22.2 No. 26 Listed; File No. E27524

NEMA/EEMAC: Type 1
 IEC 60529, IP30

APPLICATION

The new Hoffman Angled Trough cuts total installation time by 80%. It eliminates the need for costly 90-degree conduit bends and offers flexibility for wire distribution, making it a time and cost saving solution for contractors. The unique design allows conduit runs through the front of the enclosure, and can be mounted in any corner.

FEATURES

- Flexible install allows conduit runs through six sides of enclosure, including the front
- Cleaner appearance requiring less real estate on the wall
- Uniquely designed cover is removable and easy to assemble with half the number of screws
- Easy mounting via holes on the back of the enclosure
- Shipped completely assembled with no end caps to install

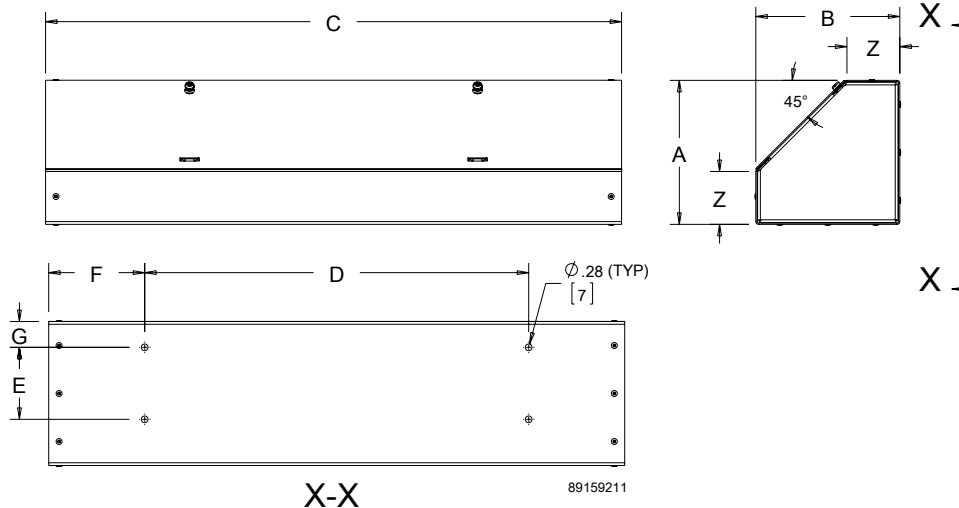
SPECIFICATIONS

- 16 or 14 gauge steel

FINISH

- ANSI 61 gray polyester powder paint finish inside and out

BULLETIN: F40AT





Standard Product

Catalog Number	AxBxC in./mm	D in./mm	E in./mm	F in./mm	G in./mm	Z in./mm	Max. Conduit size in./mm	No. of Cover Screws
AT6612	6.00 x 6.00 x 12.00	8.00	3.00	2.00	1.08	2.25	1.25	1
	152 x 152 x 305	152	76	51	27	57	32	
AT6618	6.00 x 6.00 x 18.00	10.00	3.00	4.00	1.08	2.25	1.25	2
	152 x 152 x 457	254	76	102	27	57	32	
AT6624	6.00 x 6.00 x 24.00	16.00	3.00	4.00	1.08	2.25	1.25	2
	152 x 152 x 610	406	76	102	27	57	32	
AT6636	6.00 x 6.00 x 36.00	24.00	3.00	6.00	1.08	2.25	1.25	3
	152 x 152 x 914	610	76	152	27	57	32	
AT6648	6.00 x 6.00 x 48.00	36.00	3.00	6.00	1.08	2.25	1.25	4
	152 x 152 x 1219	914	76	152	27	57	32	
AT6660	6.00 x 6.00 x 60.00	48.00	3.00	6.00	1.08	2.25	1.25	5
	152 x 152 x 1524	1219	76	152	27	57	32	
AT6672	6.00 x 6.00 x 72.00	60.00	3.00	6.00	1.08	2.25	1.25	6
	152 x 152 x 1829	1524	76	152	27	57	32	
AT8824	8.00 x 8.00 x 24.00	16.00	5.00	4.00	1.08	3.25	2.00	2
	203 x 203 x 610	406	127	102	27	83	51	
AT8836	8.00 x 8.00 x 36.00	24.00	5.00	6.00	1.08	3.25	2.00	3
	203 x 203 x 914	610	127	152	27	83	51	
AT8848	8.00 x 8.00 x 48.00	36.00	5.00	6.00	1.08	3.25	2.00	4
	203 x 203 x 1219	914	127	152	27	83	51	
AT8860	8.00 x 8.00 x 60.00	48.00	5.00	6.00	1.08	3.25	2.00	5
	203 x 203 x 1524	1219	127	152	27	83	51	
AT8872	8.00 x 8.00 x 72.00	60.00	5.00	6.00	1.08	3.25	2.00	6
	203 x 203 x 1829	1524	127	152	27	83	51	
AT101024	10.00 x 10.00 x 24.00	16.00	6.85	4.00	1.08	4.50	3.00	2
	254 x 254 x 610	406	174	102	27	114	76	
AT101036	10.00 x 10.00 x 36.00	24.00	6.85	6.00	1.08	4.50	3.00	3
	254 x 254 x 914	610	174	152	27	114	76	
AT101048	10.00 x 10.00 x 48.00	36.00	6.85	6.00	1.08	4.50	3.00	4
	254 x 254 x 1219	914	174	152	27	114	76	
AT121224	12.00 x 12.00 x 24.00	16.00	9.75	4.00	1.13	4.50	3.00	2
	305 x 305 x 610	406	248	102	29	114	76	
AT121236	12.00 x 12.00 x 36.00	24.00	9.75	6.00	1.13	4.50	3.00	3
	305 x 305 x 914	610	248	152	29	114	76	
AT121248	12.00 x 12.00 x 48.00	36.00	9.75	6.00	1.13	4.50	3.00	4
	305 x 305 x 1219	914	248	152	29	114	76	
AT121260	12.00 x 12.00 x 60.00	48.00	9.75	6.00	1.13	4.50	3.00	5
	305 x 305 x 1524	1219	248	152	29	114	76	
AT121272	12.00 x 12.00 x 72.00	60.00	9.75	6.00	1.13	4.50	3.00	6
	305 x 305 x 1829	1524	248	152	29	114	76	

