

PIVOT

Models EBG-20/C, EBG-20/CV, and EBG-28



EBG-20/CV

Comes with a HEPA vacuum kit for dust containment during dry stripping.



EBG-20/C



EBG-28

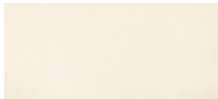
Quick Facts

- The pivoting head adjusts to uneven floors, ensuring near-perfect weight distribution all around the pad.
- Designed to transfer very little vibration to the user, making operation nice and smooth.
- The dual-seal system protects the bearing assembly and gives the Pivot its long life.
- HEPA vacuum kit also available for quick dust containment.

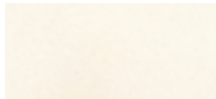
Ideal Uses

- Dry floor stripping and chemical stripping.
- Cleaning any hard surface—from LVP to concrete.
- Deep cleaning tile & grout.
- Sanding wood floors.

Available Pads



White Driver Pad



White Cleaning Pad



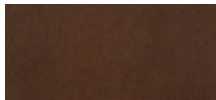
Red Cleaning Pad



Blue Cleaning Pad



3D Tile & Grout Pad



SQP Dry Stripping Pad



SHO Chemical Stripping Pad



Titan Chemical Stripping Pad

and more!

Specifications

	EBG-20/C	EBG-20/CV	EBG-28
Head Size	14" x 20"	14" x 20"	14" x 28"
Motor	1.5 horsepower	1.5 horsepower	1.5 horsepower
Operating Sound Output	69 dB	69 dB	69 dB
Oscillations	3,450/minute	3,450/minute	3,450/minute
Wheels	6" non-marking	6" non-marking	6" non-marking
Includes	Weight kit	Weight kit, HEPA vacuum kit	Weight kit
Power Cord	50'	50'	50'
Weight (without added weights)	106 lbs.	123 lbs.	117 lbs.