



# RADIANCE™

## Retrofit Downlight



SKU #	Model #
156991	FXF01181

Beyond LED Technology's Radiance Retrofit Downlight combines efficiency, flexibility, and modern design to deliver a superior lighting experience. Featuring 12W power output and 5 CCT adjustability, it offers the flexibility to switch between 2700K, 3000K, 3500K, 4000K, and 5000K, allowing you to easily customize the ambiance of any space. This makes it ideal for homes, offices, and retail settings, providing the right lighting for any environment. The low-profile, ultra-thin design ensures a sleek, seamless fit into any ceiling, while the E26 quick connection or junction box provides fast and easy installation. With its damp location rating, the Radiance Retrofit Downlight is designed to offer reliable performance in various indoor settings, from kitchens and bathrooms to living rooms and professional spaces.

### Product Features

- Up to 88 lm/W
- 12 Watt
- Adjustable CCT
- Available in 6"
- Triac Dimming
- 120° Beam Angle
- White housing
- Input Voltage 120VAC
- ETL listed
- 5-year warranty

# RADIANCE™

## Retrofit Downlight



SKU	WATT	MAX LUMENS	ADJ. CCT	INPUT VOLTAGE	CRI	SIZE	LIGHT SPREAD	CONSTRUCTION	DIMMING	CERTIFICATIONS
156991	12W	1050	2700K/3K/3500K/ 4K/5K	120V	>80	6"	120°	Aluminum+PC Lens	Triac	ETL

SKU: 156991 / 6"

### Specifications

Parameter	Description	Value
General Performance	Model #	FXF01181
	Watt	12W
	Max Lumen	1050
	Lumen Efficacy	Up to 88LM/W
	Color Temperature	2700K / 3000K / 3500K / 4000K / 5000K
	CRI (Ra)	>80
	Light Spread	120°
	Diffuser Type	PC Lens
Electrical	Input Voltage	120VAC
	Frequency	50/60Hz
	Dimming	Triac Dimmable
	Power Factor	≥0.7
	Driver Surge Protection	N/A
	Flicker Percent	N/A
Physical	Operating Temperature	-20°C~45°C
	Operating Humidity	≤80%RH
	Storage Temperature	-20°C~65°C
	Storage Humidity	≤95%RH
	LED Brand	MLS
	LED Type	2835
	LED QTY	16+16 PCS
Construction	Plastic	
Qualification	Housing Color	White
	IP Rating	Damp Location
	Warranty	5 Years

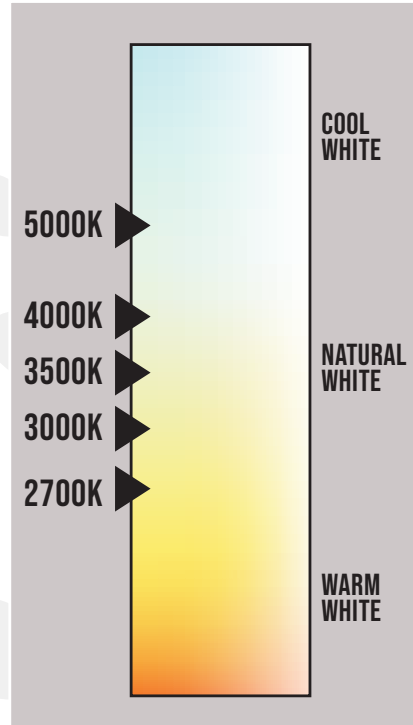
RETROFIT DOWNLIGHT



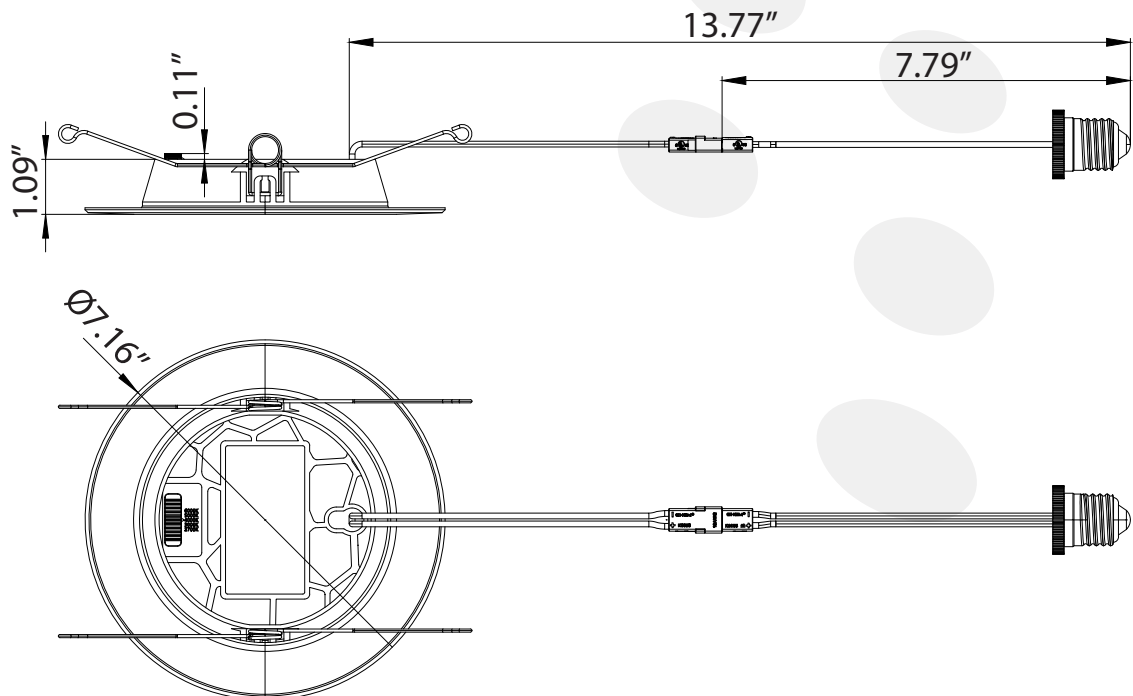
# RADIANCE™

## Retrofit Downlight

### Correlated Color Temperature (CCT)



### Dimensions

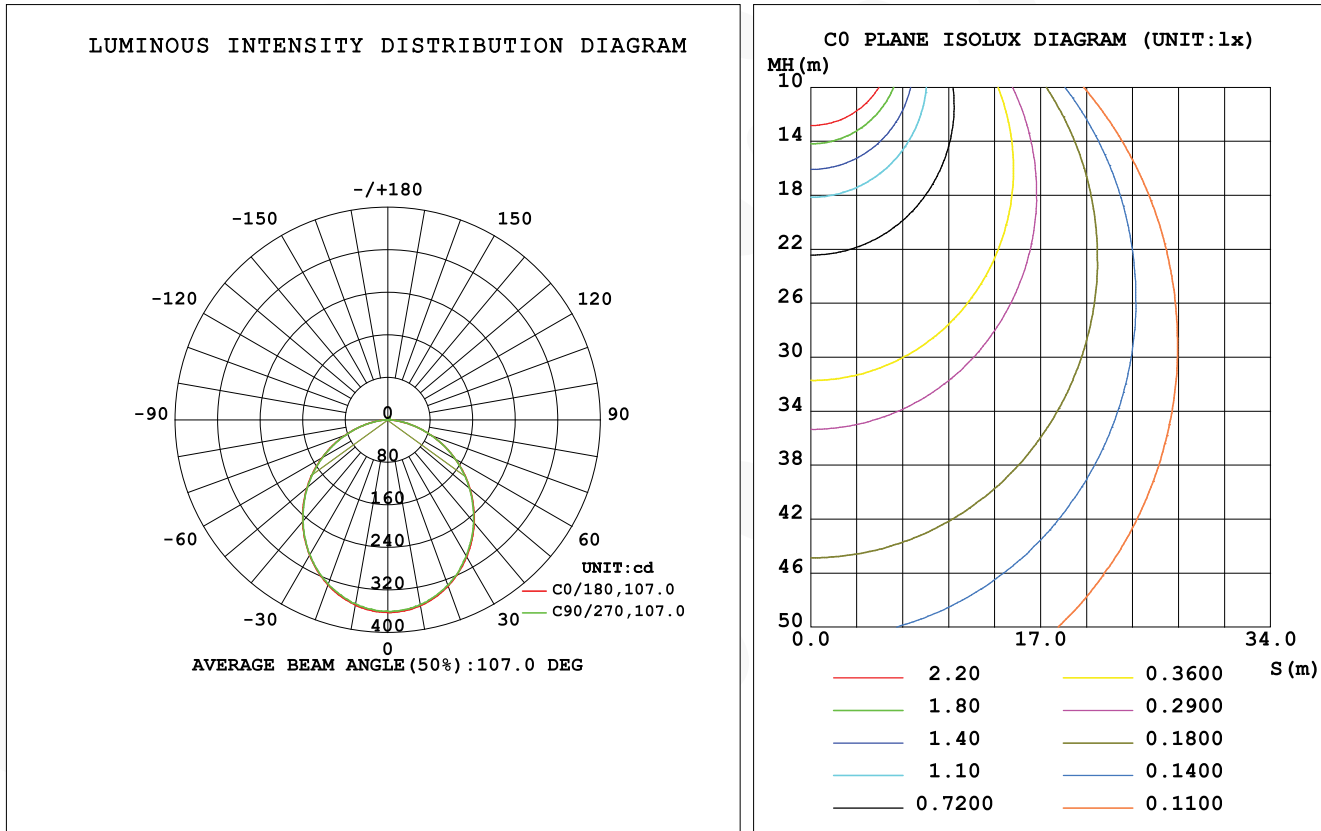


# RADIANCE™

## Retrofit Downlight



### Photometric Data



C Range: 0 - 360DEG  
 C Interval: 90.0DEG  
 Test Speed: HIGH  
 Temperature: 25.3DEG  
 Operators:  
 Test Date: 26 August 2024

$\gamma$  Range: 0 - 180DEG  
 $\gamma$  Interval: 0.5DEG  
 Test System: EVERFINE GO-2000A\_V1 SYSTEM V2.0.350  
 Humidity: 55.0%  
 Test Distance: 8.852m [K=1.0000]  
 Remarks:

RETROFIT DOWNLIGHT



# RADIANCE™

## Retrofit Downlight

### Installation

#### WARNING

#### SAFETY INFORMATION

- THIS DEVICE IS NOT INTENDED FOR USE WITH EMERGENCY EXITS
- NE CONVIENT PAS AUX SORTIES DE SECOURS
  
- WARNING – RISK OF FIRE OR ELECTRIC SHOCK. INSTALLATION OF THIS RETROFIT KIT REQUIRES A PERSON FAMILIAR WITH THE CONSTRUCTION AND OPERATION OF THE LUMINAIRE'S ELECTRICAL SYSTEM AND THE HAZARD INVOLVED. IF NOT QUALIFIED, DO NOT ATTEMPT INSTALLATION.
- CONTACT A QUALIFIED ELECTRICIAN. AVERTISSEMENT – RISQUE D'INCENDIE OU DE CHOC ÉLECTRIQUE. L'INSTALLATION DE CE NÉCESSAIRE DE MODERNISATION EXIGE UNE PERSONNE FAMILIÈRE AVEC LA CONSTRUCTION ET LE FONCTIONNEMENT DU SYSTÈME ÉLECTRIQUE DU LUMINAIRE ET DES RISQUES ASSOCIÉS. TOUTE PERSONNE QUI N'EST PAS QUALIFIÉE NE DOIT FAIRE AUCUNE TENTATIVE D'INSTALLATION ET DOIT CONTACTER UN ÉLECTRICIEN QUALIFIÉ.
  
- WARNING – RISK OF FIRE OR ELECTRIC SHOCK. INSTALL THIS KIT ONLY IN THE LUMINAIRE THAT HAS THE CONSTRUCTION FEATURES AND DIMENSIONS SHOWN IN THE PHOTOGRAPHS AND/OR DRAWINGS AND WHERE THE INPUT RATING OF THE RETROFIT KIT DOES NOT EXCEED THE INPUT RATING OF THE LUMINAIRE.
- AVERTISSEMENT – RISQUE D'INCENDIE OU DE CHOC ÉLECTRIQUE. N'INSTALLER CE NÉCESSAIRE QUE DANS LE LUMINAIRE DONT LES CARACTÉRISTIQUES DE CONSTRUCTION ET LES DIMENSIONS SONT CONFORME À CELLES ILLUSTRÉES DANS LES PHOTOS ET/OU LES DESSINS ET DONT LA PUISSANCE D'ENTRÉE NOMINALE DU NÉCESSAIRE DE MODERNISATION NE DÉPASSE PAS CELLE DU LUMINAIRE.
  
- DO NOT MAKE OR ALTER ANY OPEN HOLES IN AN ENCLOSURE OF WIRING OR ELECTRICAL COMPONENTS DURING KIT INSTALLATION.
- IL EST INTERDIT DE FAIRE OU DE MODIFIER UNE OUVERTURE DANS UN BOÎTIER DE CÂBLAGE OU DE COMPOSANTS ÉLECTRIQUES AU COURS DE L'INSTALLATION DU NÉCESSAIRE.

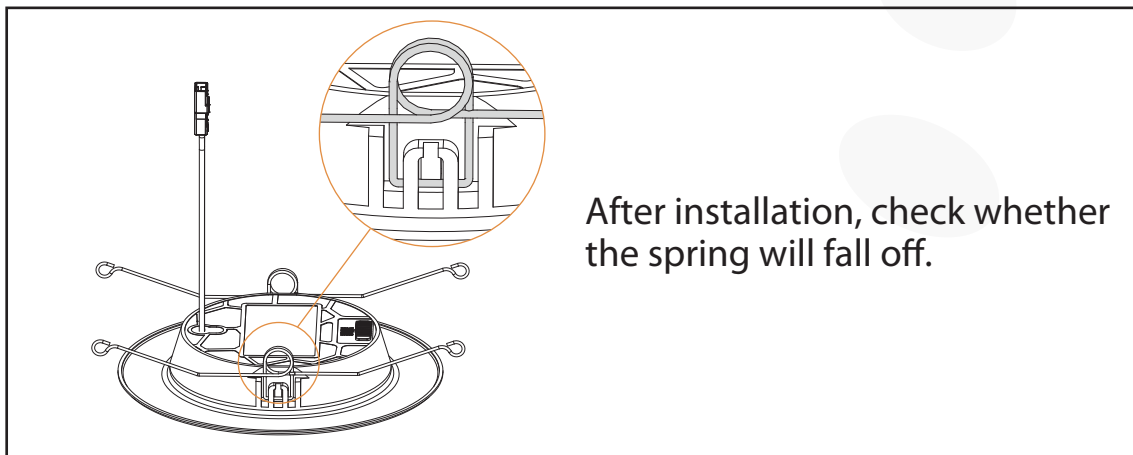
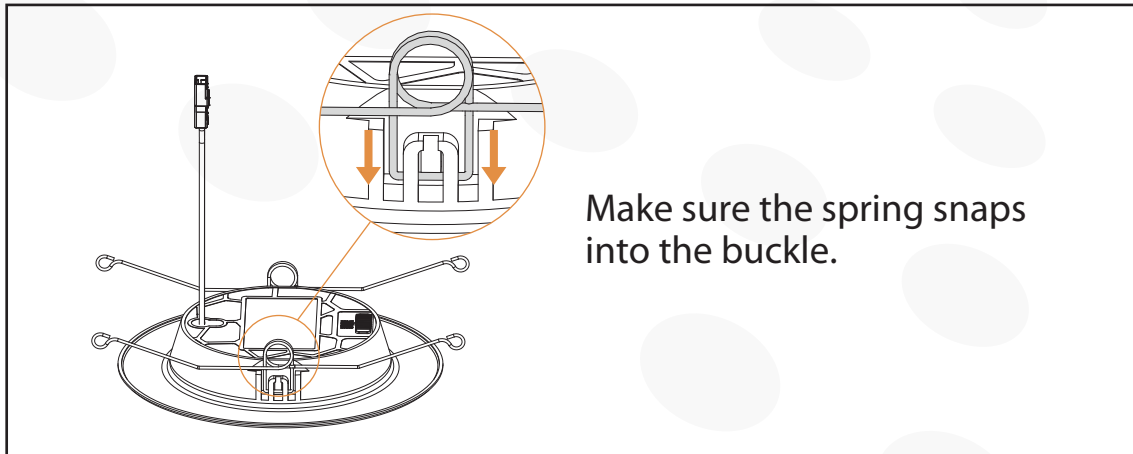
# RADIANCE™

## Retrofit Downlight



### Installation

#### ACCESSORIES INSTALLATION

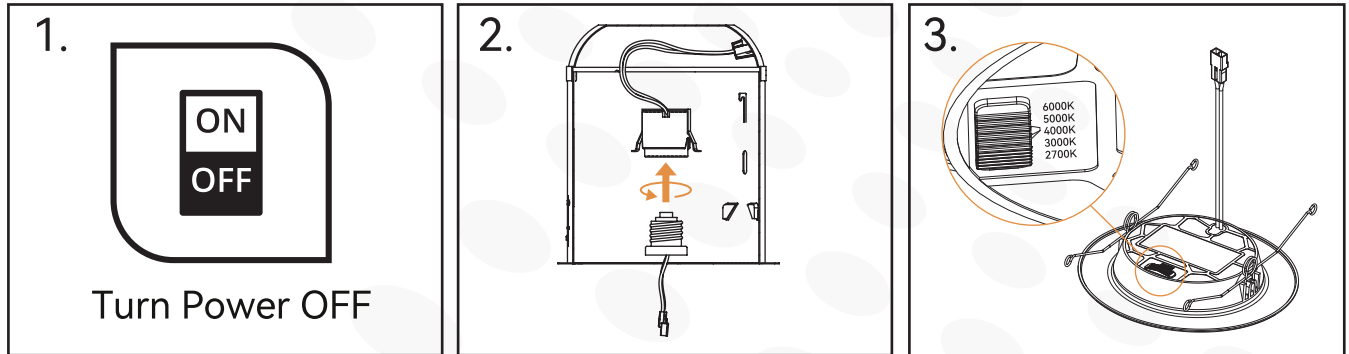




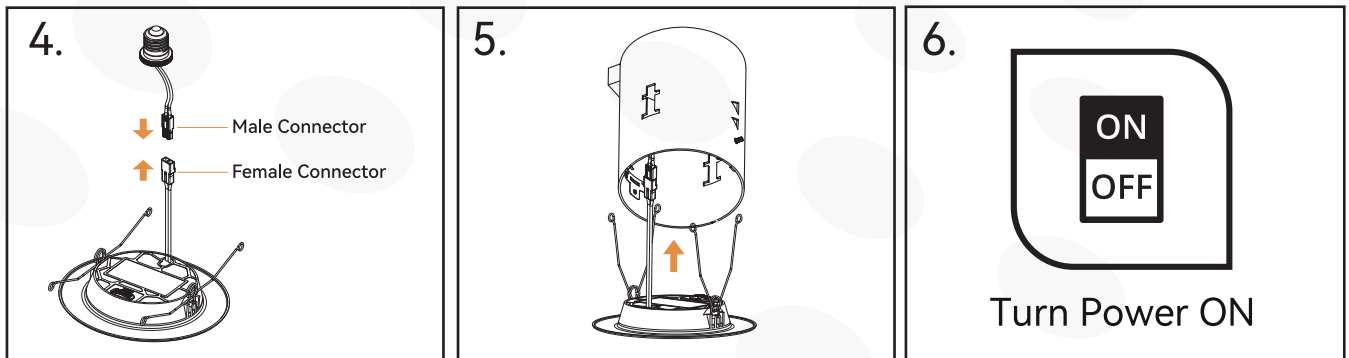
# RADIANCE™

## Retrofit Downlight

### Installation



1. Turn off circuit breaker that provides power to the light switch for the recessed lights.
2. Thread the socket adapter into the socket.
3. The toggle switch to the specified color temperature



4. Plug the female connector of the retrofit trim onto the male connector of the housing.
5. If using torsion springs, squeeze both torsion spring arms together and insert into the torsion spring slots (or c-clips) of the can. Tuck all wires into the can and carefully push the retrofit trim into can (Note: to provide enough room in shallow cans carefully position SOCKET ADAPTER and SOCKET adjacent to the side of the LED DRIVER prior to inserting the RETROFIT TRIM into the CAN).
6. Turn on circuit breaker and test light

### WARNING

- WARNING – TO PREVENT WIRING DAMAGE OR ABRASION, DO NOT EXPOSE WIRING TO EDGES OF SHEET METAL OR OTHER SHARP OBJECTS.
- AVERTISSEMENT – AFIN DE PRÉVENIR L'ENDOMMAGEMENT OU L'ABRASION DES CÂBLES, ÉVITER TOUT CONTACT ENTRE CES DERNIERS ET LE BORD D'UN OBJET TRANCHANT TEL QU'UNE TÔLE.

# RADIANCE™

## Retrofit Downlight



### Installation

### DIMMER COMPATIBILITY GUIDE

Brand	Model	Star Rating
LUTRON	PD6WCL	★ ★ ★ ★ ☆
	MSCL-OP153M	★ ★ ★ ★ ☆
	CN-600P	★ ★ ★ ★ ☆
	DVCL-153P2.1	★ ★ ★ ★ ☆
	SCL-600P	★ ★ ★ ★ ☆
	SLV-600P	★ ★ ★ ★ ☆
	MACL-153M	★ ★ ★ ★ ☆
	DV-600P	★ ★ ★ ★ ☆
LEVITON	IPL06	★ ★ ★ ★ ☆
	DSL06	★ ★ ★ ★ ☆
	IPI06	★ ★ ★ ★ ☆
	6674	★ ★ ★ ★ ☆
	6631	★ ★ ★ ★ ☆

RETROFIT DOWNLIGHT



# RADIANCE™

## Retrofit Downlight

### PROBLEMS AND COUNTERMEASURES

PROBLEM	PROBABLE CAUSE	SOLUTION
Unlit	The wire falls off/loosens/breaks	Check that the wires are well connected
	The power switch is not turned on	Make sure the power switch is on
	The light holder in the UL cans is damaged	Check and replace with a new light holder
	Loose connection between E26 adapter and light base	Check the E26 adapter and light holder are well installed
	Loose connection on TP24 connector	Change the TP24 connector
	The voltage is too high and the product is damaged	Make sure the voltage is 120V
	None of the above	Reach out to our Customer Support
Dim	The wire falls off/loosens/breaks	Check the wires are well connected
	Incompatible dimmer	Check the dimmer model with the manual
	Not setting the dimmer right	Check dimmer settings
	Too many lights are connected to one dimmer	Reduce the number of lights connected to a dimmer (the total power of the lights should be less than 75% of the rated power of the dimmer)
	The brightness of lighting is too low	Install more lights 4inch: 2-4ft; 6inch: 5-7ft
	The brightness of lighting is too high	Turn down the dimmer or reduce the number of lights on at the same time
	Voltage is too low	Check the voltage to make sure it is 120V
	Loose connection between E26 adapter and light base	Check the E26 adapter and light holder are well installed
	The light is not installed correctly	Check the installation of the light, to ensure that the springs and other parts are normal
Flickering	The wire falls off/loosens/breaks	Check the wires are well connected
	Incompatible dimmer	Check the dimmer model with the manual
	Not setting the dimmer right	Check dimmer settings
	Too many lights are connected to one dimmer	Reduce the number of lights connected to a dimmer (the total power of the lights should be less than 75% of the rated power of the dimmer)
	High-power electrical appliances on the same circuit	Reduce the number of lights light on the same time
	Voltage is too low	Check the line voltage to make sure the voltage is 120V
	Loose connection between E26 adapter and light base	Check the E26 adapter and light holder are well installed
Falls	No C-clamp on the can	Replace the can, or install the C-clamp
	The can has C-clamp but the spring was not fixed in the clamp	Re-install
	The spring is loose	Reach out to our Customer Support

# RADIANCE™

## Retrofit Downlight



### Packaging

SKU	Box Type	Size	Box Dimension	Qty	Net Weight	Gross Weight
156991	Inner Box	6"	13.38" x 2.67" x 7.36"	4 Pcs/Box	0.95LBS	1.43LBS
	Outer Box	6"	13.38" x 8.66" x 7.87"	6 Pcs/Box	2.84LBS	5.14LBS

### Application Image



RETROFIT DOWNLIGHT



# RADIANCE™

## Retrofit Downlight

### Application Image



### Warranty

This product is covered under a 5-year warranty. For complete warranty details, [Click Here.](#)