

# User Manual

Model No.: AF05B01240924

Bluetooth Version



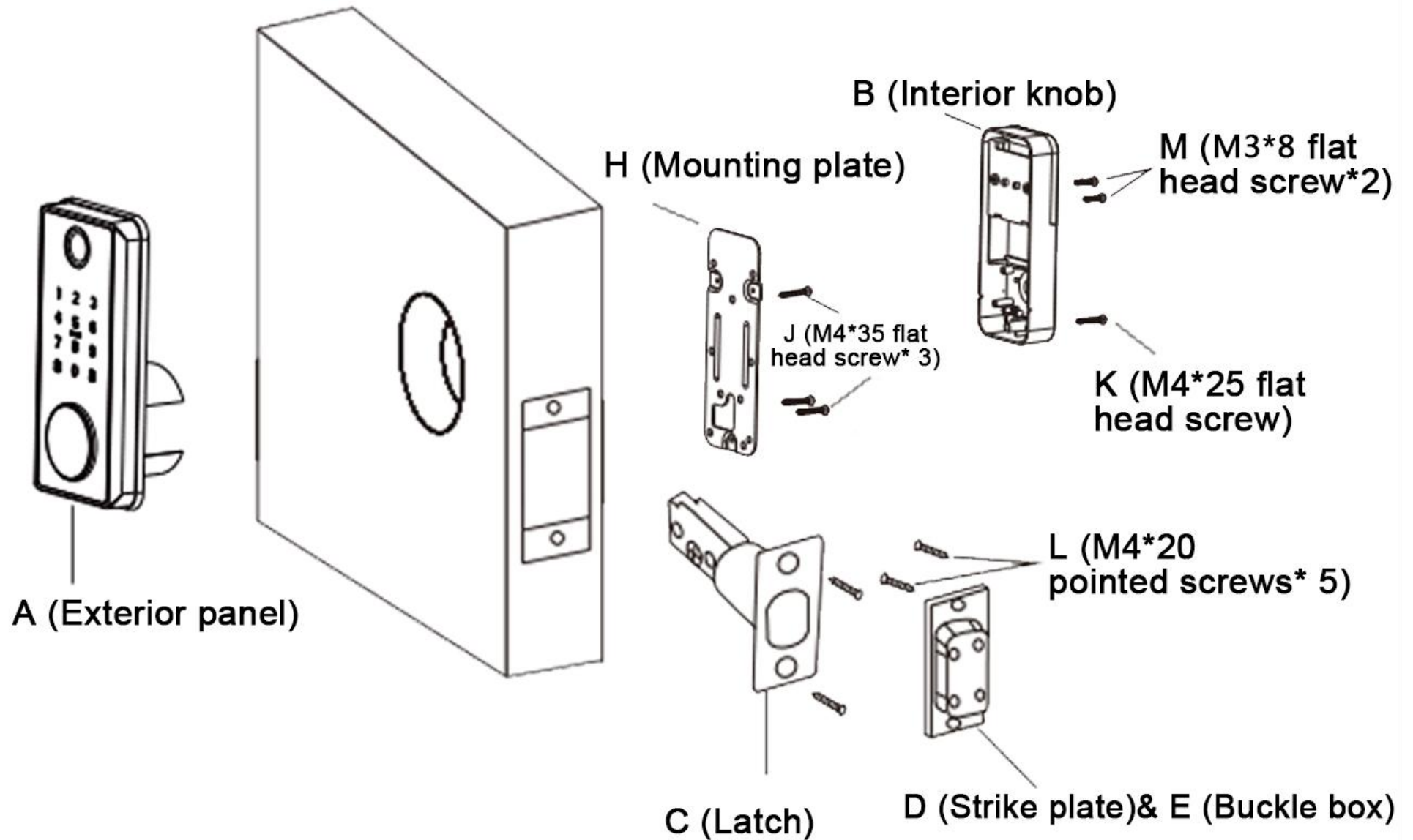
**IMPORTANT:** Read the instructions carefully before operating the appliance and keep them for future reference.

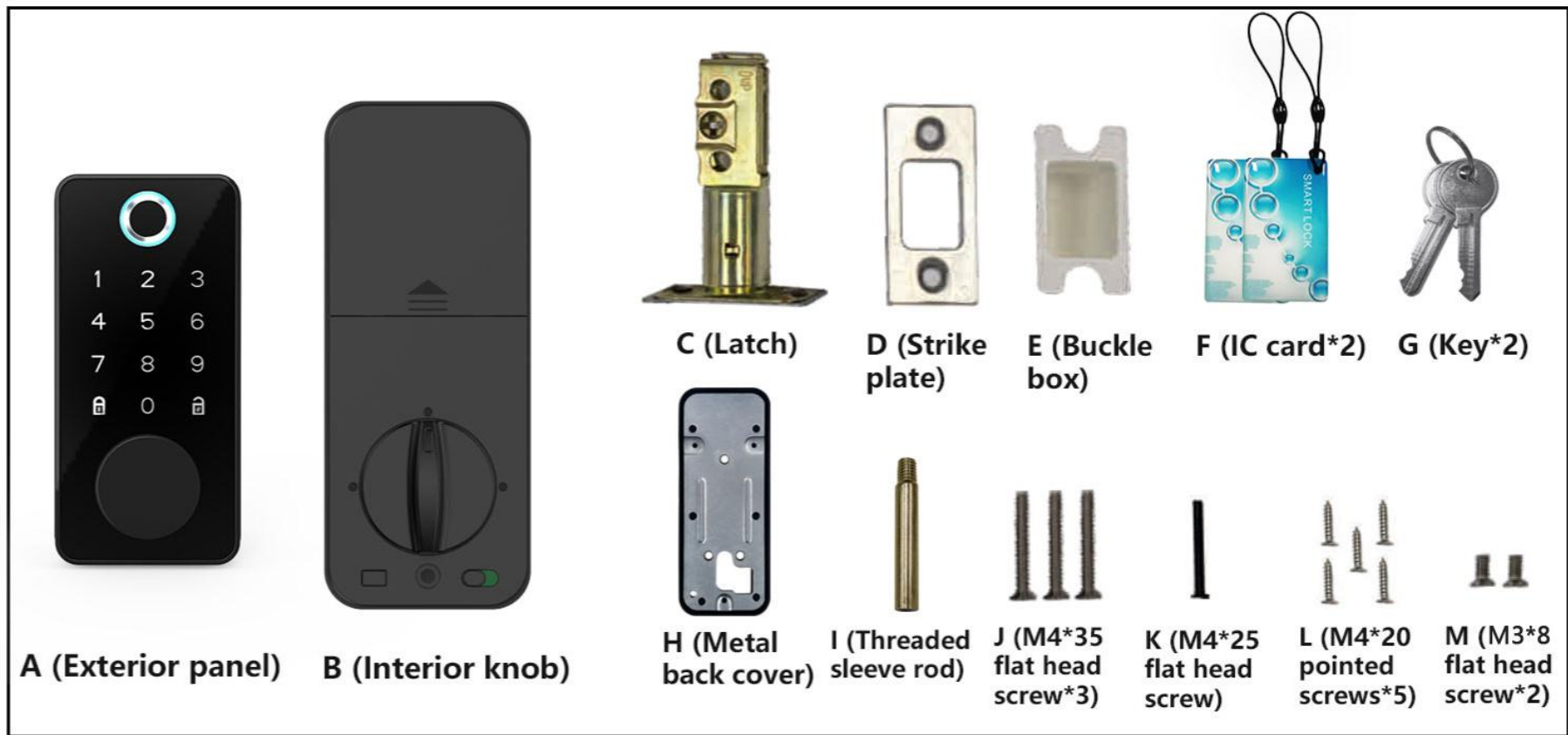
# Contents



<b>What's in the Box?</b> .....	1
<b>Installation Guide</b> .....	3
1. Confirm the Mounting Location .....	3
2. Install the Strike Plate and Adjust the Latch .....	4
3. Install the door lock .....	6
<b>Initialize the Door Lock (Very important)</b> .....	12
<b>Tuya Smart APP Operation Manual</b> .....	13
1. Login .....	14
2. Add Smart Lock Device .....	15
3. Device Management .....	16
4. Member Management .....	17
5. Fingerprint & Passcode & IC Card Management ..	18
6. Temporary Code .....	18
7. Device Log .....	20

8. Door Lock Settings .....	21
9. Home Management .....	22
<b>Other Settings</b> .....	23
1. Buttons on the interior knob .....	23
2. Emergency USB charging port .....	24
<b>Trouble Shooting</b> .....	25
<b>Important Safeguard</b> .....	27

# What's in the Box?





TOOL REQUIRED:   USE OF A POWERED SCREWDRIVER IS NOT RECOMMENDED

## Batteries

The smart lock requires 4 AA batteries (not included in the package), use brand new non-rechargeable AA alkaline batteries for best results.



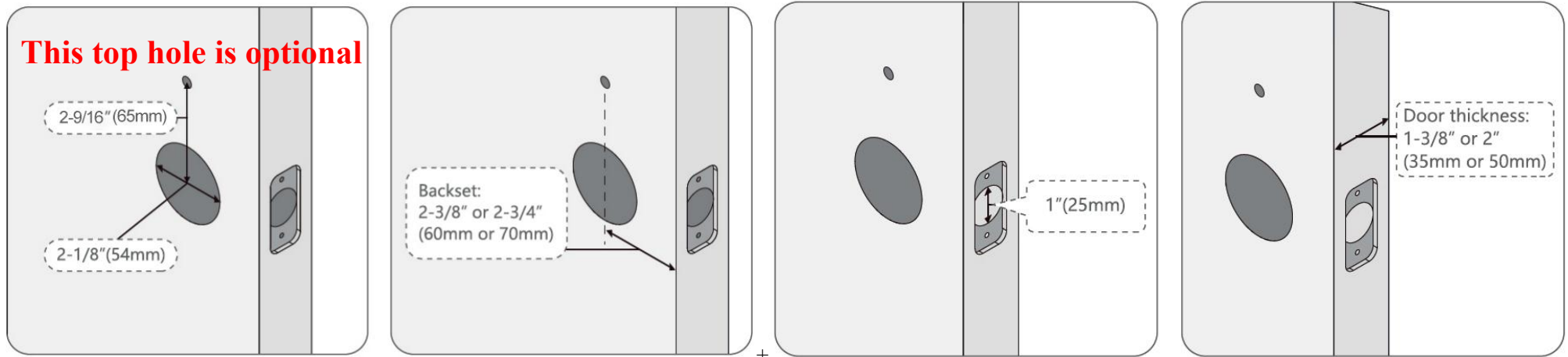
**DO NOT mix new batteries with used ones.**

# Installation Guide

## 1. Confirm the Mounting Location

Measure to confirm:

- 1) Door hole below the door is 2-1/8" (54mm).
- 2) Backset is either 2-3/8" or 2-3/4" (60 or 70mm).
- 3) Latch hole in the door is 1" (25mm).
- 4) Door thickness is between 1-3/8" and 2" (35mm to 50mm).
- 5) Optional: Top hole center distance above door hole center point is 2-9/16" (65mm).



If your door does not have the ready-made holes for the lock, additional drilling will need to be completed before installation.

**⚠ DO NOT** install this product if your door thickness is out of range.

## 2. Install the Strike Plate and Adjust the Latch

- 1) Use L(Screws) to fix the D (Strike plate) and E (Buckle box) to the door frame.
- 2) Please make sure the C (Latch) is unlocked before installation, if the C (Latch) is locked, use the key to unlock it.



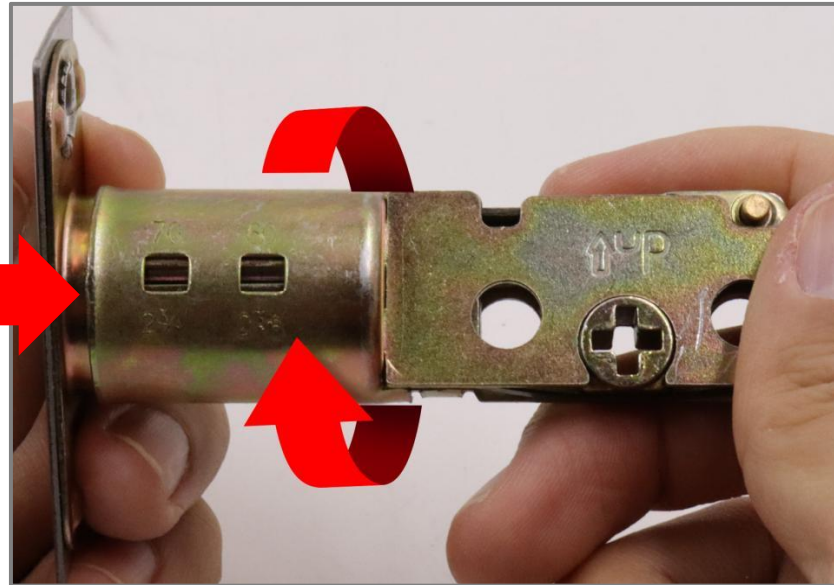
Figure I-Locked



Figure II-Unlocked

- 3) If your door backset is 2-3/8" (60mm), please install the C (Latch) directly (refer to Figure II).
- 4) If your door backset is 2-3/4" (70mm), please follow the steps below to adjust the C (Latch) before installation.

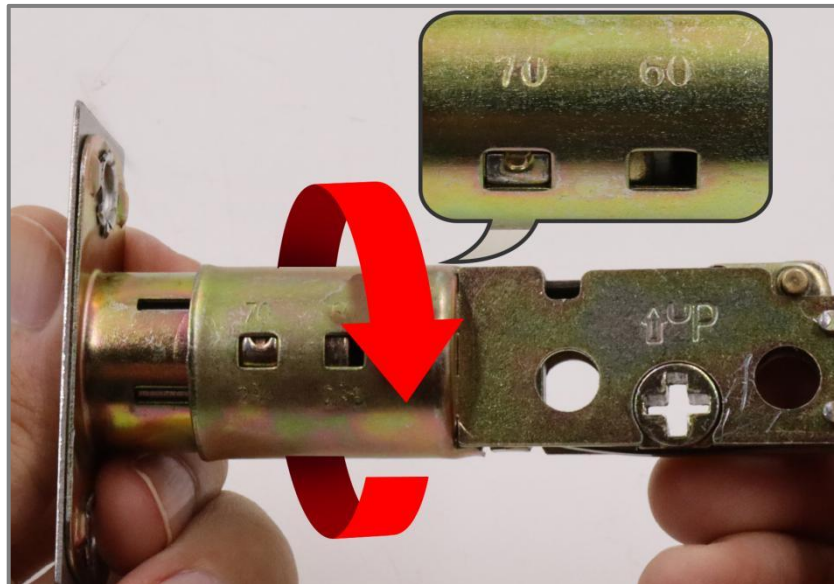
STEP 1. Rotate the C (Latch) body upwards.



STEP 2. Pull the C (Latch) body and align the two holes.

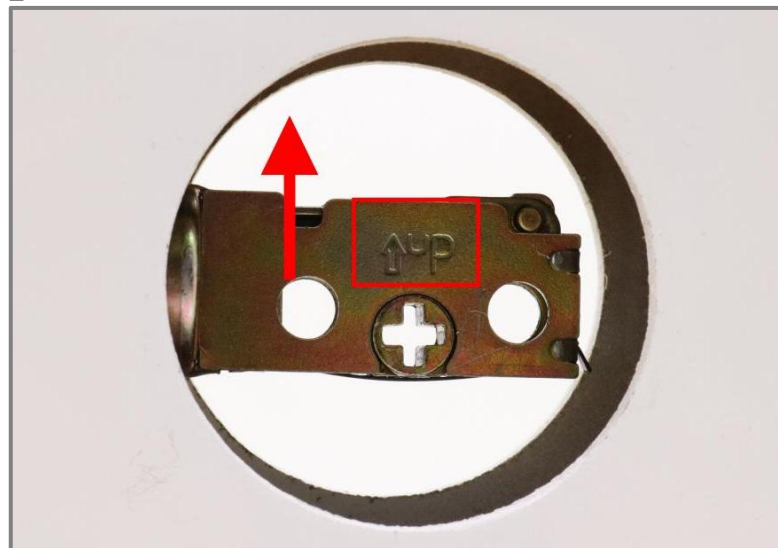


STEP 3. Rotate the C (Latch) body downward and snap the buckle into the 70mm hole.



### 3. Install the door lock

STEP 1. Use (L)screws to fix C (Latch), note that the "↑UP" mark is upward and the keyhole is downward, as shown in the picture.

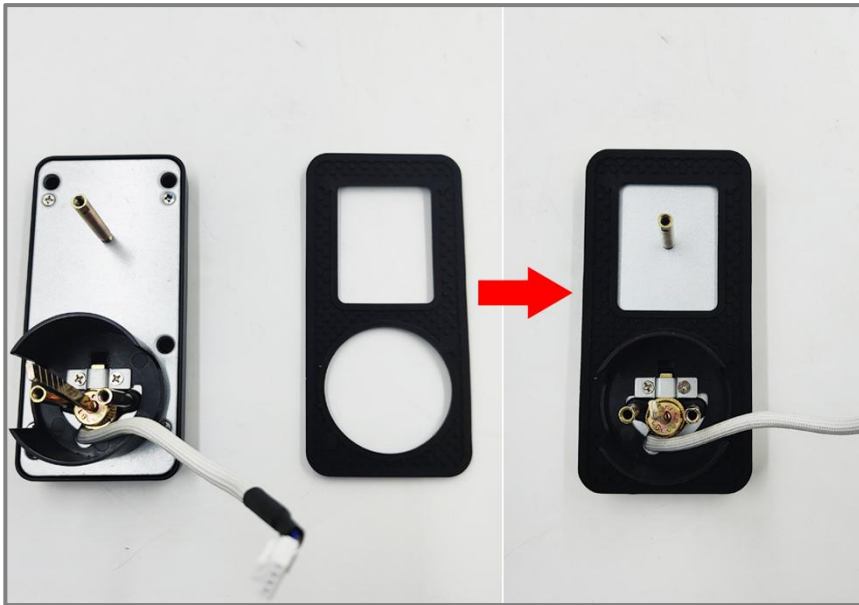


STEP 2. (Optional) Fasten I (Threaded sleeve rod).

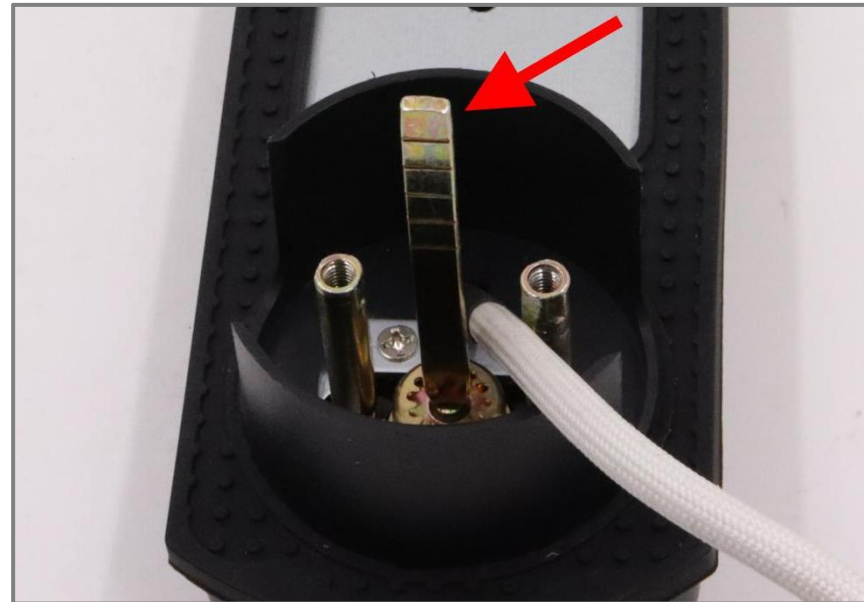


If there is only one hole drilled in the door, this step can be ignored.

STEP 3. Fasten the gasket to the A (Exterior panel).



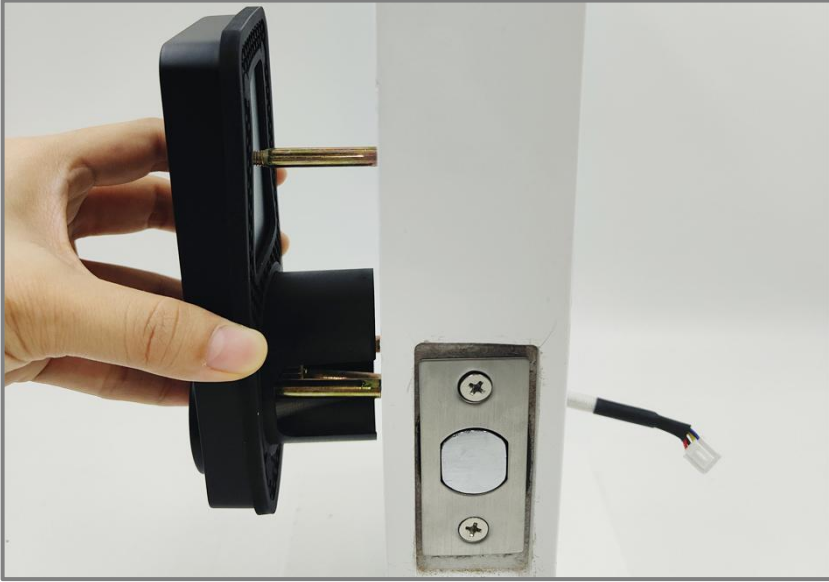
STEP 4. Adjust the lock's spindle so that it appears "—".



STEP 5. The connecting wire must pass under the C (Latch).



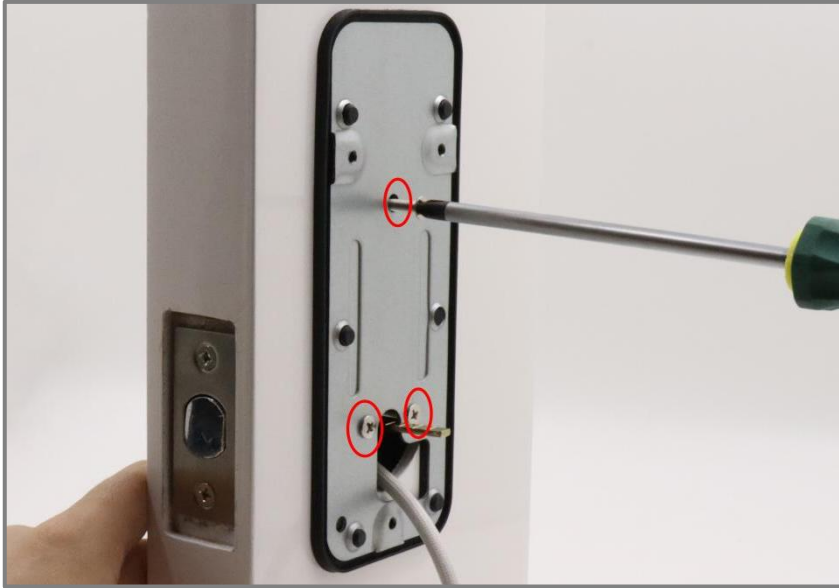
STEP 6. Align the A (Exterior panel) horizontally with the hole and insert it into the C (Latch).



STEP 7. Fasten the gasket to the H (Mounting Plate).

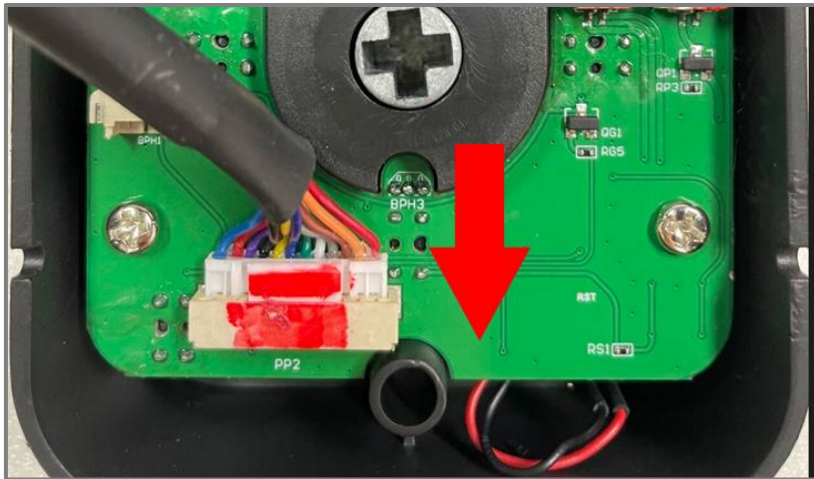


STEP 8. Align (J) screw with I (Threaded sleeve rod), and then tighten it with a screwdriver to fix H (Mounting Plate).

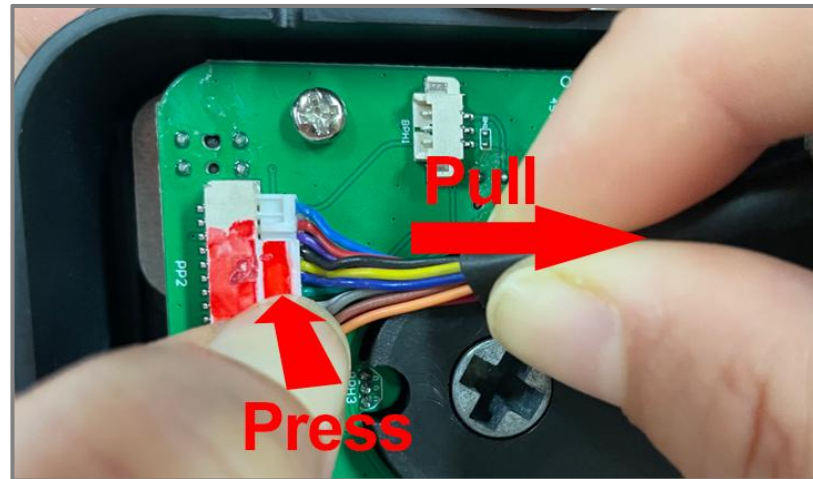


The (J) screw on the top makes the lock more Fasten, it is optional.

STEP 9. Insert the cable into the Connector of the Interior knob (B). (Ps: Press the end of the connector when pulling out).



Insert the cable

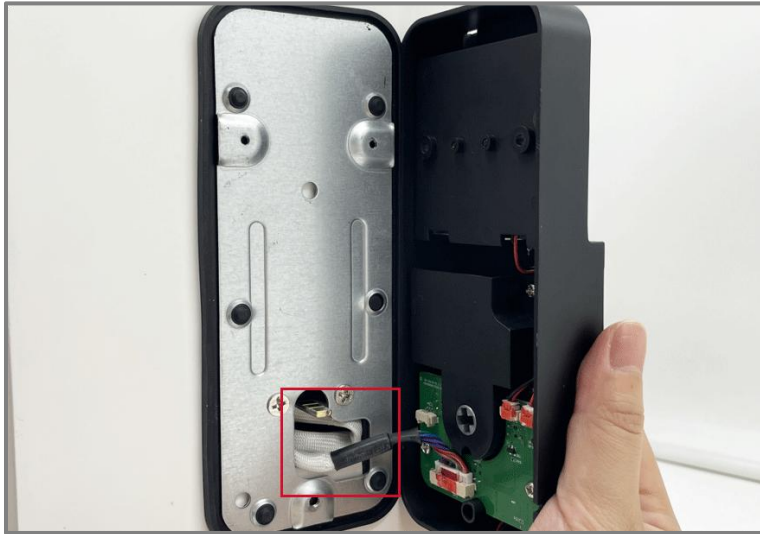


Press and pull out the cable

Step 10. The internal knob must be adjusted to the "|" sign so that the door lock can automatically recognize the opening direction. If it is adjusted to "—", the lock cannot recognize, lock, or unlock normally.



Step 11. Put the cable into the door hole and away from the latch. Install the Interior knob (B) and let the gasket cover the Interior knob (B) completely.



Step 12. Use 2 screws (M) and 1 screw (K) to Fasten the Interior knob (B) with the Mounting Plate (H).



Step 13. Insert the key to test whether it is locked and unlocked normally. If not, please check whether your operation is consistent with the previous steps.

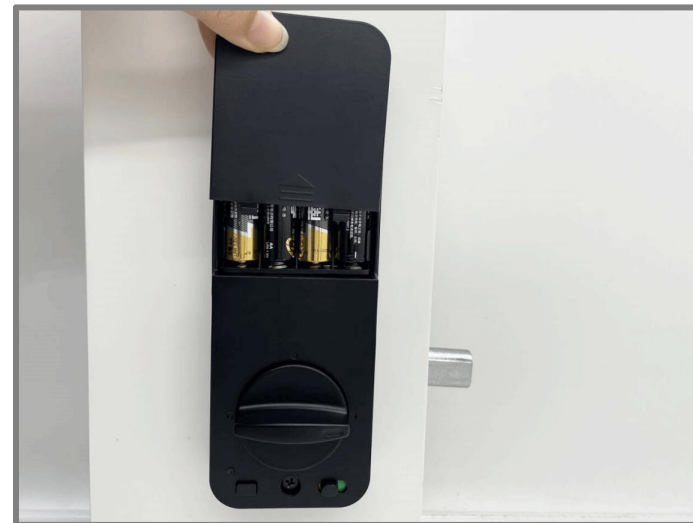


# Initialize the Door Lock (Very important)

Step 1: Prepare 4 brand new AA batteries, install three batteries first, then press and hold the lock/unlock button of the interior knob.



Step 2: Keep pressing the lock/unlock button while inserting the fourth battery, you will hear "initialization successful", then release it. The door knob will automatically adjust, when you hear "succeeded" it means it has been completed, then install the battery cover.



# Tuya Smart APP Operation Manual



**Tuya Smart APP**

## **Note:**

1. Please scan the QR code on the left with your mobile phone to download the app or search "Tuya Smart" in the APP store or Google play and download it.

2. Please initialize the door lock before adding it to the APP (please refer to page 13 for details). Or if you need to change the initial administrator of the lock, you must initialize it before doing so. **(Very important)**

3. The smart lock requires 4 AA batteries(not included) to work, please install before resetting.

## **How to initialize the door lock when you need to change the initial administrator:**

WAY 1. Remove a battery, then press and hold the lock/unlock button of the interior knob while inserting the battery again. You will hear "initialization successful", then release it.

WAY 2. Delete the lock directly in the mobile APP. Click "Home"->>Long press the door lock device needs to be deleted in All Devices->> Check the door lock device to be deleted and click "Remove Device"->> Click "Confirm".

# 1.Login

Run the APP and enter the login interface. Sign up with an email address or mobile number. If you don't have a Tuya Smart account, please register first.

## Log in:

< Register

### Log In

Please enter your account

Password

I Agree [Privacy Policy](#) [User Agreement](#)  
[Children's Privacy Statement](#) and  
[Third Party Information Sharing List](#)

Log In

[Forgot Password](#)

## Register:

### Register

Mobile Number/Email

I Agree [Privacy Policy](#) [User Agreement](#)  
[Children's Privacy Statement](#) and  
[Third Party Information Sharing List](#)

Register

## Home:

TY ▾

23°C

Excellent Outdoor PM2.5    Good Outdoor air qu...    45.0% Outdoor humidity

**Calls Notification**

[Learn more >](#)

All Devices

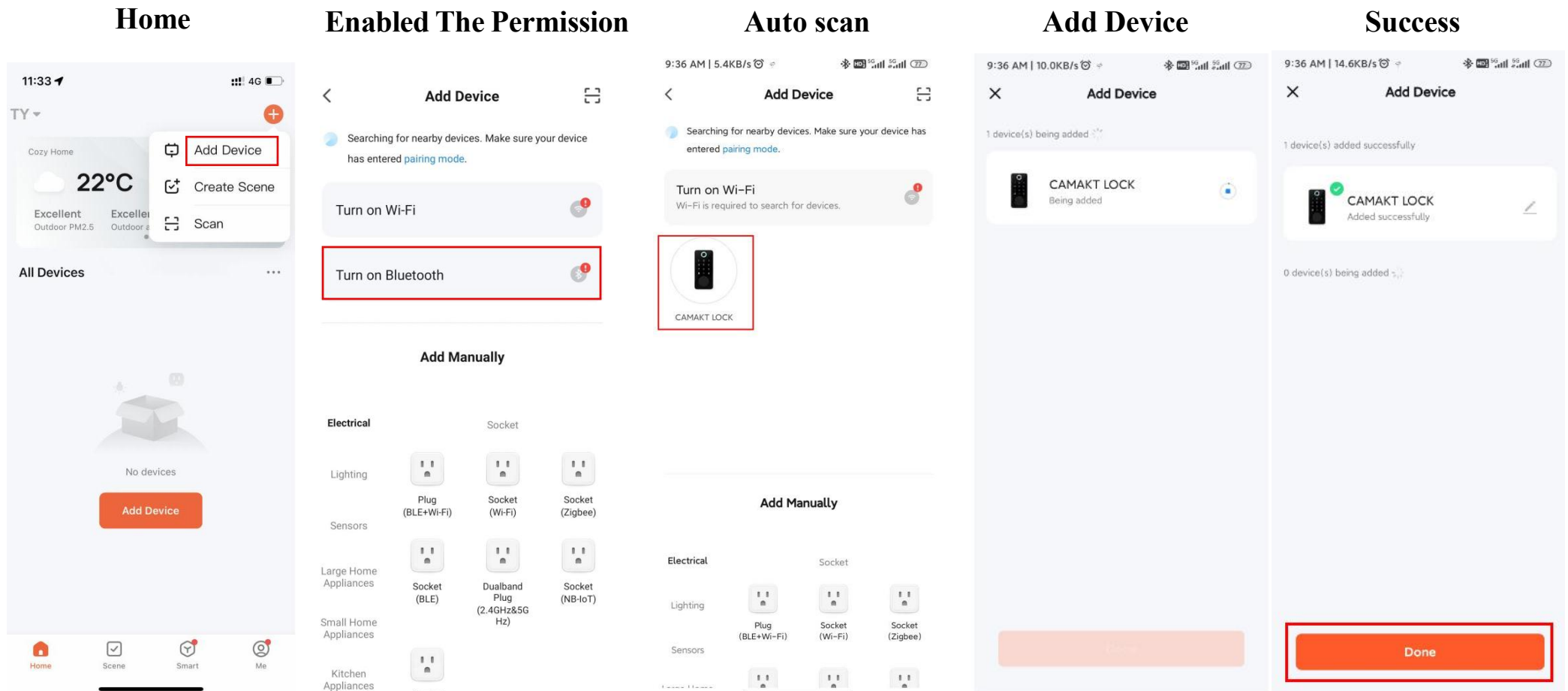
No devices

Add Device

## 2. Add Smart Lock Device

Turn on Bluetooth and location permission on your mobile setting interface. Click the “Add Device” button, then the nearby devices will show up automatically.

**Please do not pair this device on two mobile phones at the same time.**



### 3.Device Management

The “Home” page displays all the added devices and supports device list order change. Click the device to enter the device management page. (Device Status, Temporary Code, Member Management, Key Management, Device Setting, Device Log).

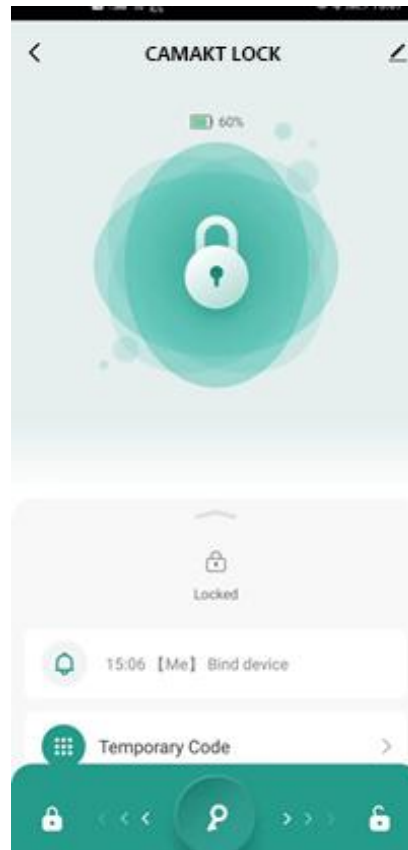
#### List View:

display all devices



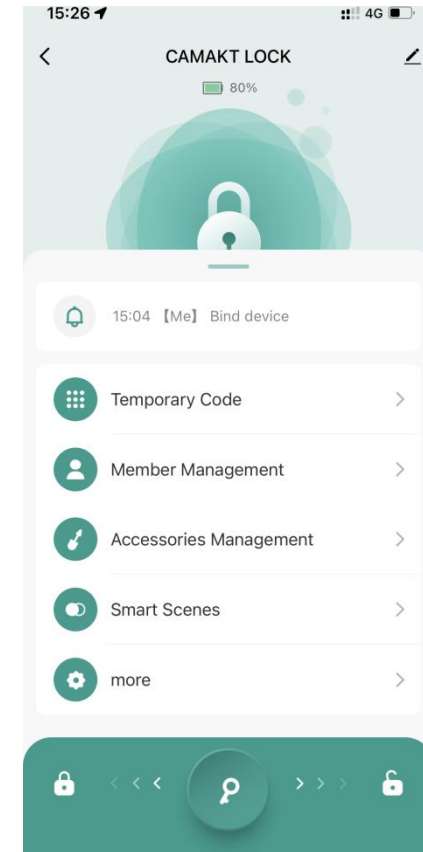
#### Device Status:

battery, latch, connect



#### Device Operation:

Code, member,setting,control



## 4.Member Management

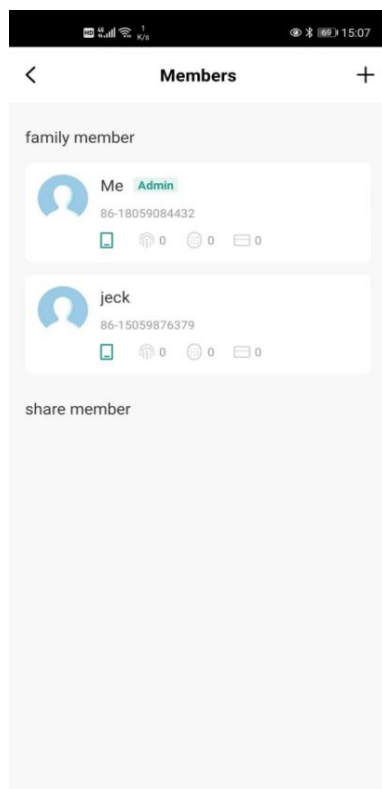
Administrator owns all permissions on the Tuya Smart APP and can **Add/Share** or remove members in the members list. (Note: Members need to download the Tuya Smart APP and register their account in advance.)

**Add:** By adding, members can obtain all the permissions on Tuya APP, such as adding fingerprint, passcode and IC card.

**Share:** By sharing, members can obtain permission to unlock the door via Tuya APP.

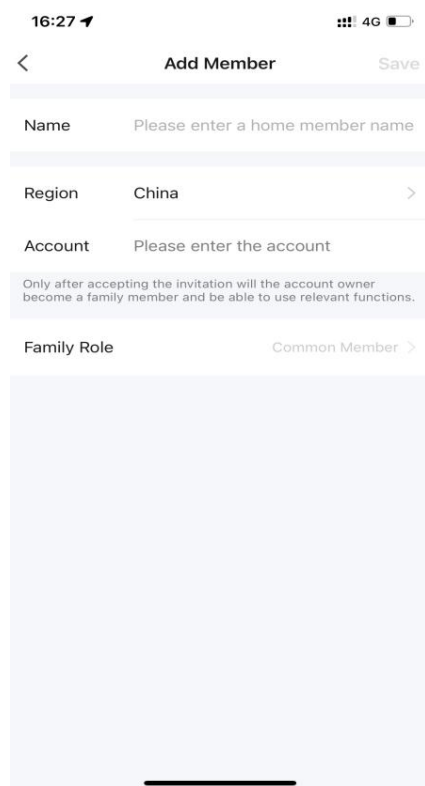
### Member List:

Family member list



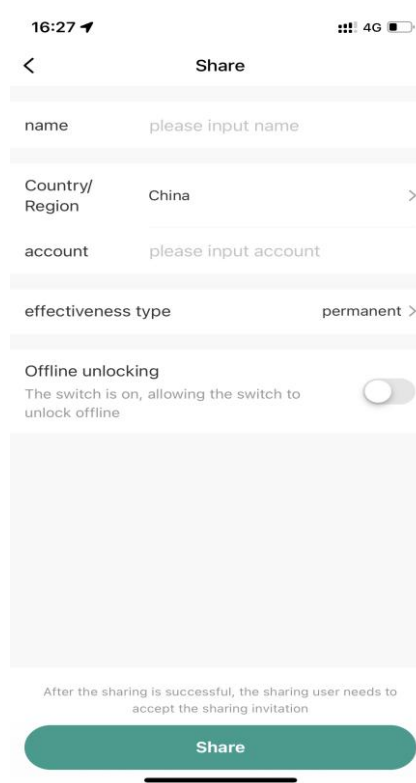
### Add Member:

Enter the member's name  
& account



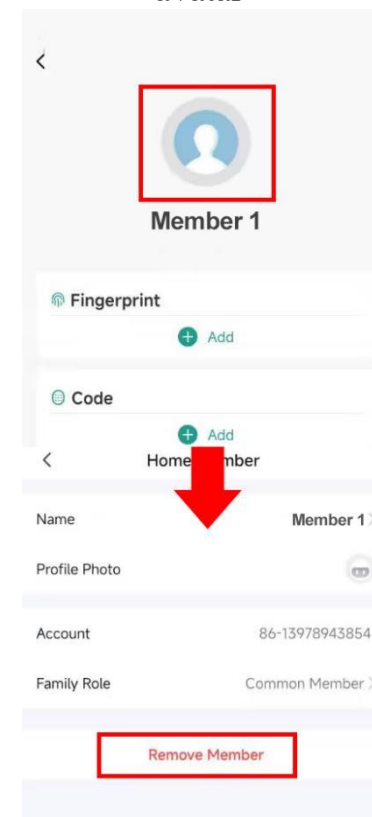
### Share Member:

Enter the member's name  
& account



### Remove Member:

Long press the member's  
avatar

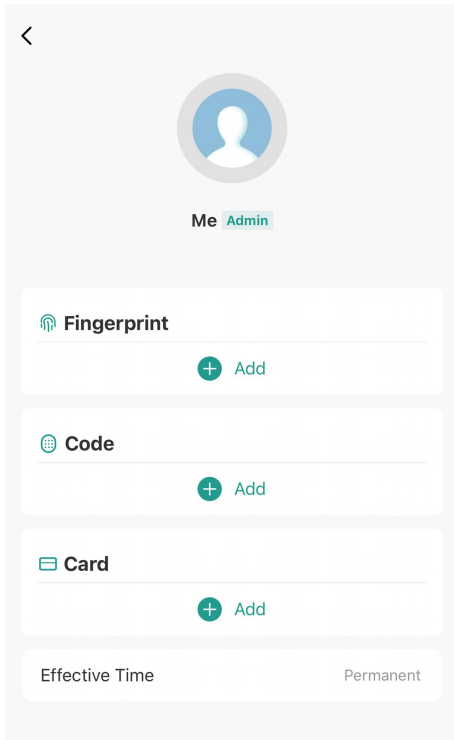


# 5.Fingerprint & Passcode & IC Card Management

On the “Members” page, click into the (Me)-Administrator's profile, add Fingerprint, Code and Card on this page. Supports adding family members' fingerprints directly without downloading APP and registering for an account.

### Setting list:

Fingerprint, Password, IC card



### Add Fingerprint:

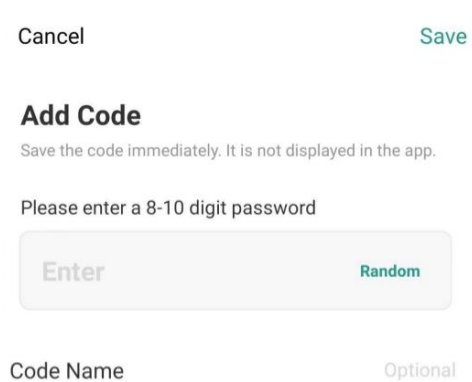
Click the button to start



Add a fingerprint at different angles in the circular fingerprint recognition area.

### Set Passcode:

Enter passcode and code name



### Add IC Card:

Click the button to start

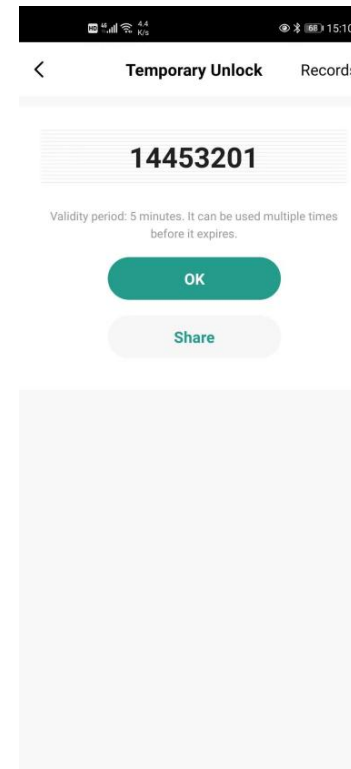
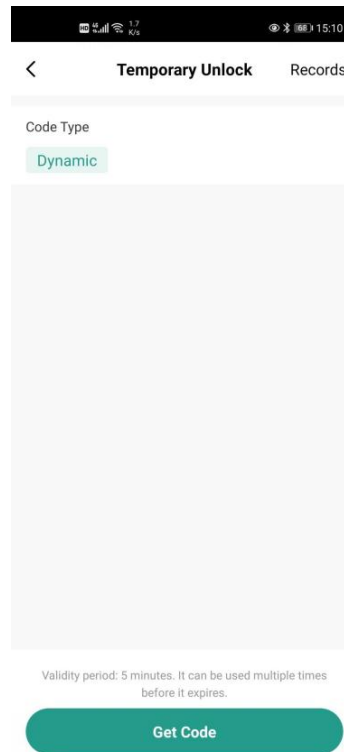


Place the IC card in the area of numbers and wait for it to be sensed.

## 6. Temporary Code

Find the “Temporary Code” page on the APP to get dynamic temporary passwords. Use this function to open the door for your family, friends and guests when you are not at home.

***Validity period: 5 minutes. It can be used multiple times before it expires.***

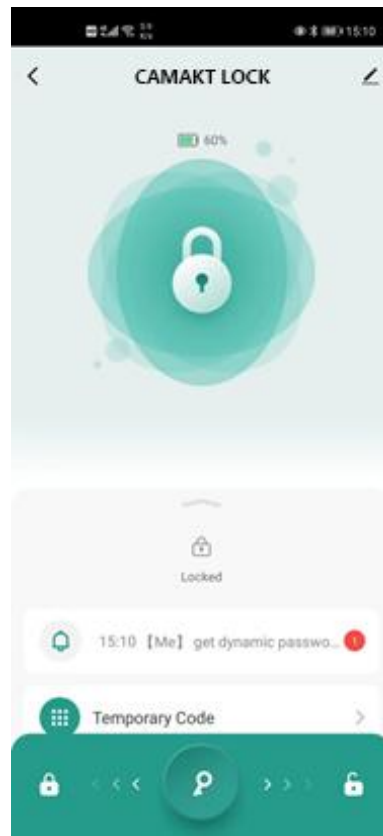


## 7.Device Log

As a guard, the smart lock will let you know everything when the app is connected to the lock via Bluetooth. For example, adding a password/fingerprint, unlocking/locking, abnormal unlocking, or low battery, etc.

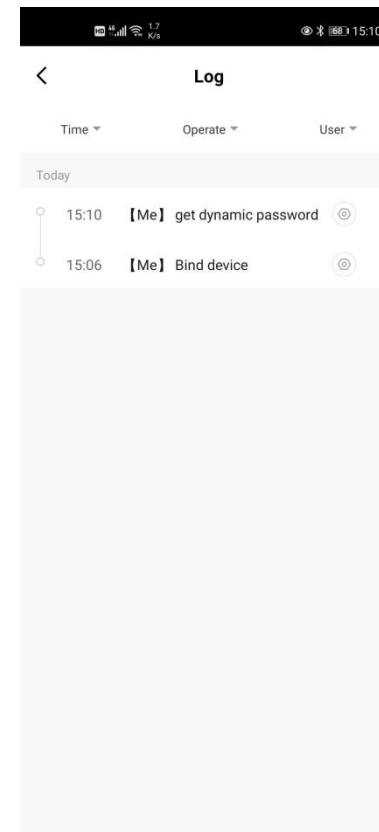
### Entry:

The bell icon



### Log:

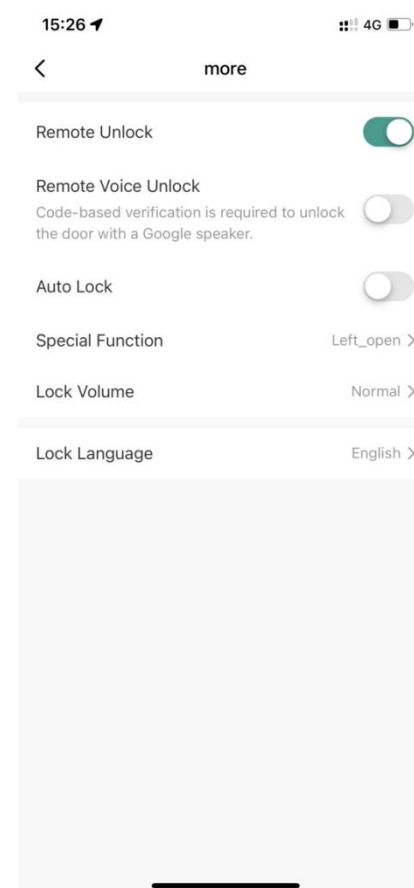
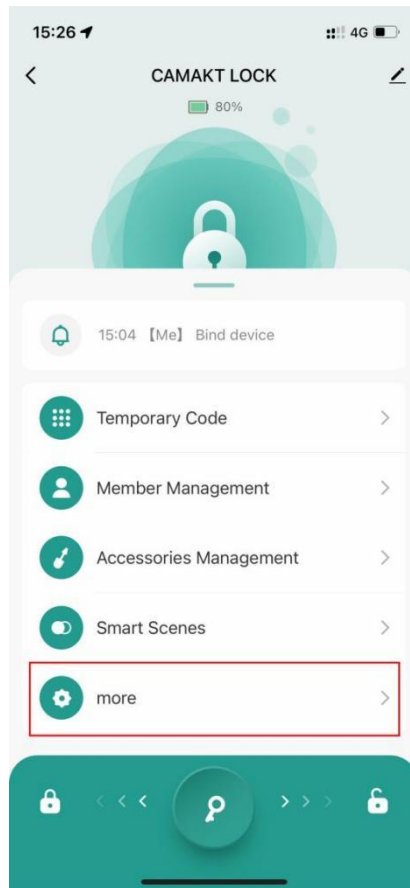
alarm, operation, bulletin



## 8. Door Lock Settings

Click "More" to enter the more door lock settings interface, you can set automatic locking, door opening direction, volume and language settings and remote unlock setting according to your needs.

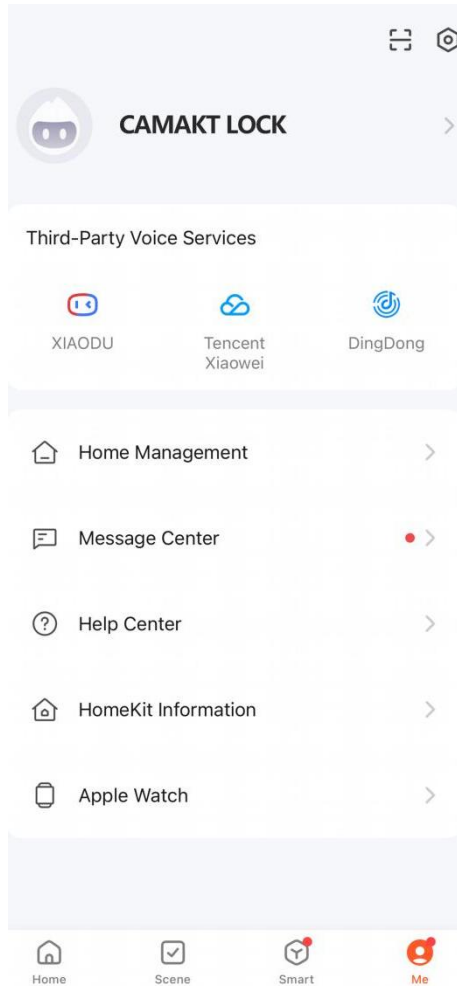
*Please note: This device is a Bluetooth version smart door lock, it supports app unlocking within the Bluetooth range. If you need to use the remote unlocking function, please purchase the Tuya Gateway separately.*



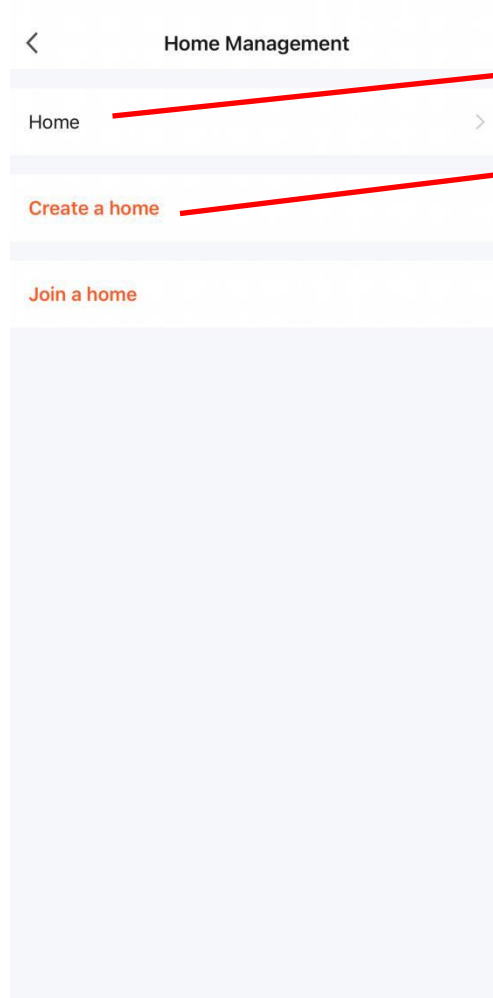
# 9.Home Management

You can share smart home access with family members and establish member-specific permissions by the following:

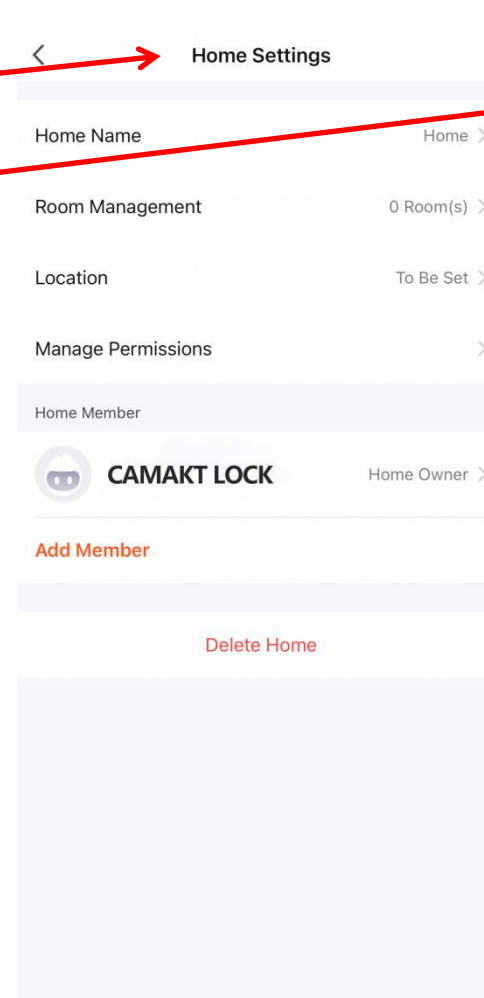
**Me:**



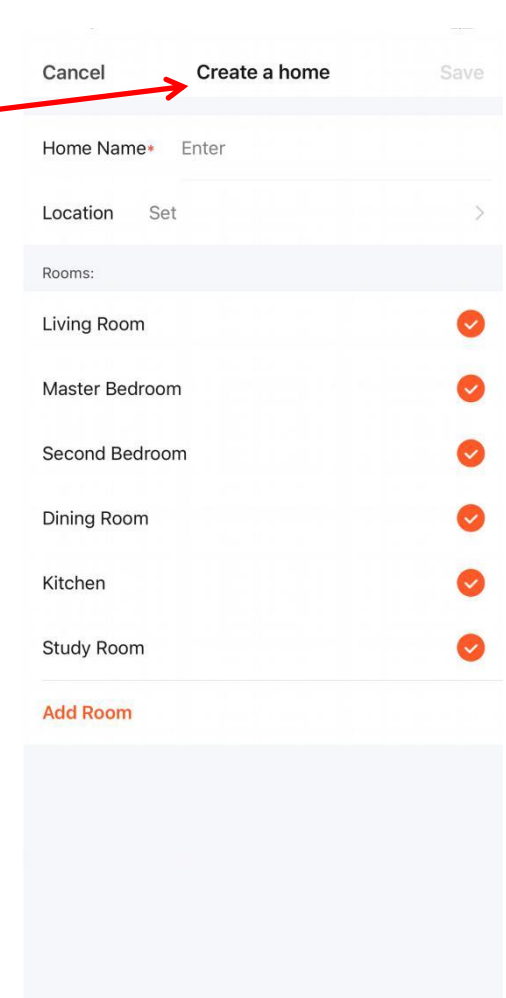
**Home Management:**



**Home Setting:**



**Create a home:**



# Other Settings

## 1. Buttons on the interior knob

1) Press this button to lock and unlock in the room.



2) Another switch is used to anti-unlock from the outside.

When the switch is turned to red, the door cannot be opened from the outside, except the administrator's app or the 1st added passcode or mechanic key.



**Note:** The account that added the lock for the first time is the administrator.

## 2. Emergency USB charging port

The APP will display the remaining battery level of the lock. If the battery is dead, use a type-c data cable to connect the power bank and the door lock to obtain temporary power.

**Please note: The power bank cannot charge the batteries, please replace the batteries for the door lock in time.**



# Trouble Shooting

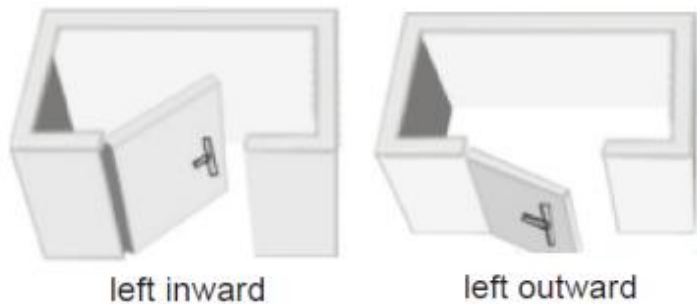
**Q: After installation, the door lock doesn't respond or perform abnormally.**

**A:** Please check as follows:

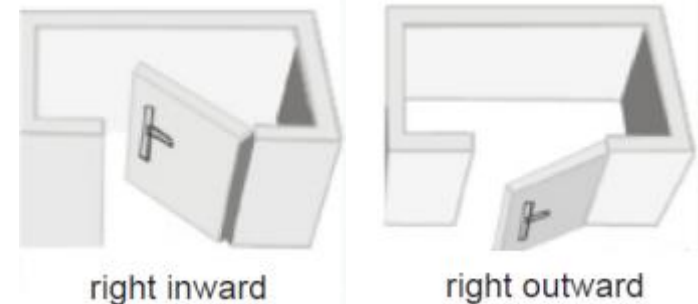
1. Check the battery installation direction and make sure that the battery has sufficient power.
2. Make sure the battery cover is in place.
3. Check whether the cable is fully into the connector of the Interior knob.
4. Make sure the internal knob is placed correctly during installation.

**Q: The door lock should be unlocked but it is locked, or the door lock should be locked but it is unlocked.**

**A:** 1. Please click on the door lock device in the app to enter the control homepage ->> click "more", ->> check whether the door opening direction displayed in the "Special Function" option is consistent with the door opening direction of your door.



Left door opening direction



Right door opening direction

2. If the door opening method displayed in the app is inconsistent with the door opening direction of your door, please select the correct door opening direction, and then test again whether the unlocking/locking is correct.
3. If the door opening method displayed in the app is consistent with the door opening direction of your door:
  - 1) Please remove and initialize the door lock in the app (please refer to page 14 for details).
  - 2) And click "Me" in the app ->> click the settings icon in the upper right corner ->> slide to the bottom of the page and click "Clear Cache".
  - 3) Keep the door lock unlocked and return to page 11 to set and add the door lock again according to the steps.

**Q: Unable to successfully add fingerprints or the fingerprint recognition success rate is different from what the manual says.**

**A:** When entering the fingerprint, please enter your fingerprints in the circular fingerprint recognition area, and try to move the position of the fingertip slightly every time you enter the fingerprint, so that you can enter a larger fingerprint area. Please try to cover areas that are frequently used.

**Q:Unable to add IC card?**

**A:**When adding an IC card, please place the IC card in the area of the keyboard

numbers and wait for it to be sensed. Please do not place it in the circular fingerprint recognition area.

**Q: How do I know the battery is low?**

**A:** You can check the remaining battery level on the APP, and remember to replace the battery in time.

## **Important Safeguard**

- 1) Keep at least one key out of the door for emergencies.
- 2) When sending a user code, always double-check that you are sending it to the correct recipient.
- 3) Dispose of used batteries according to local laws and regulations.
- 4) When the battery is dead, you can unlock the door with key, or supply the lock with power through the USB port and use fingerprint or password to unlock it. Prevent water and liquids from getting into the lock's electric parts or battery compartment.
- 5) Pay attention to the remaining battery level of the device on the APP. When it is almost out of power, please replace the battery as soon as possible.

**CAUTION:** Prevent unauthorized entry. Since anyone with access to the interior assembly can initialize door lock, routinely check the administrator code to ensure they have not been altered without your notice.

