



EAN:	4013288227225	Size:	96x43x20 mm
Part number:	05005501001	Weight:	40 g
Article number:	8790 B Impaktor	Country of origin:	TW
		Customs tariff number:	82042000

- For use with electric or pneumatic wrenches with 3/8" drive
- Impaktor technology for above-average service life
- Hexagon profile allows precise and profile-friendly screwdriving with high power transmission
- With Take it easy tool finder: colour coding by size
- With cross hole and ring socket to attach the safety pin and safety ring of machine operated tools

Impaktor socket wrench insert for use with electric or pneumatic wrenches with 3/8" drive. The Impaktor technology ensures a higher-than-average service life even at extreme requirements. With Take it easy Tool finder with colour coding by size - for quick and easy identification of the required tool. With hexagon profile and socket with hole. The hexagon profile offers the transmission of high forces and loads the edges of the bolt or the screw head less than a double hexagon profile. For external hexagon bolts and screws.

Web link

<https://www.wera.de/en/05005501001>

Wera - 8790 B Impaktor
05005501001 - 4013288227225

Wera Werkzeuge GmbH
Korzter Straße 21-25
D-42349 Wuppertal
Tel: +49 (0)2 02 / 40 45-0
E-Mail: info@wera.de

For electric or pneumatic wrenches



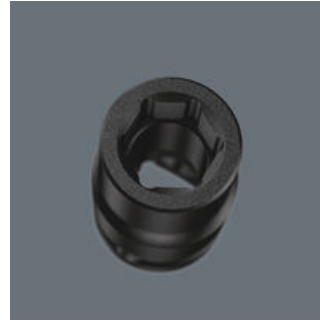
The Impaktor technology ensures above-average service life of the Impaktor socket wrench plug-ins even under extreme conditions.

Cross hole and ring socket



Thanks to the hole and the ring socket, the tools can be held securely on the power tool with a safety pin or an O-ring.

Profile-friendly power transmission



The hexagon profile offers the transmission of high forces and loads the edges of the bolt or the screw head less than a double hexagon profile. Fine-toothed ratchets also make use of a double hexagon profile superfluous, even in confined spaces, thanks to their small return angle.

Take it easy tool finder system



Take it easy tool finder system - with profile and size colour-coding for quick and easy tool selection. Colour-coded system for hexagon drive screws (L-Keys, Zyklop bit sockets), external hex drive screws and nuts (Joker wrenches, Zyklop sockets and Zyklop bit sockets with holding function), and TORX® drive screws (L-Keys, Zyklop bit sockets).






Web link

<https://www.wera.de/en/05005501001>

Wera - 8790 B Impaktor
05005501001 - 4013288227225

Wera Werkzeuge GmbH
Korzter Straße 21-25
D-42349 Wuppertal
Tel: +49 (0)2 02 / 40 45-0
E-Mail: info@wera.de

Further versions in this product family:

						
		mm	inch	mm	mm	mm
05005500001	leuchtpink_232C	8.0	-	30.0	14.1	19.0
05005501001	leuchtgelb_yellow C	10.0	-	30.0	16.6	19.0
05005502001	cyan_2985C	11.0	-	30.0	17.8	19.0
05005503001	schwarz_blackC	12.0	-	30.0	18.2	19.0
05005504001	tuerkis_339C	13.0	-	30.0	20.0	22.0
05005505001	pink_241C	14.0	-	30.0	21.0	22.0
05005506001	weiss	15.0	-	30.0	22.0	22.0
05005507001	violett_2735C	16.0	-	30.0	22.0	24.0
05005508001	rot_200C	17.0	-	30.0	23.0	25.0
05005509001	gruen_363C	18.0	-	30.0	23.0	26.0
05005510001	blau_307C	19.0	-	30.0	25.0	27.8
05005511001	gruen_363C	21.0	-	32.0	27.0	30.0
05005512001	gelb_123C	22.0	-	32.0	28.0	32.0
05005513001	cyan_2985C	24.0	-	32.0	30.0	34.0
05005514001	gelb_123C	-	1/4"	30.0	11.0	19.0
05005515001	blau_307C	-	5/16"	30.0	14.1	19.0
05005516001	rot_200C	-	3/8"	30.0	16.6	19.0
05005517001	violett_2735C	-	7/16"	30.0	17.8	19.0
05005518001	tuerkis_339C	-	1/2"	30.0	20.0	22.0
05005519001	pink_241C	-	9/16"	30.0	21.0	22.0
05005520001	schwarz_blackC	-	5/8"	30.0	22.0	24.0
05005521001	cyan_2985C	-	11/16"	30.0	23.0	25.0
05005522001	gelb_123C	-	3/4"	30.0	25.0	28.0
05005523001	blau_307C	-	13/16"	32.0	27.0	30.0
05005524001	leuchtgruen_375C	-	7/8"	32.0	28.0	32.0
05005525001	rot_200C	-	15/16"	32.0	30.0	34.0
05005526001	tuerkis_339C	-	1"	32.0	32.0	36.0

Web link

<https://www.wera.de/en/05005501001>

Wera - 8790 B Impaktor
05005501001 - 4013288227225

Wera Werkzeuge GmbH
Korzter Straße 21-25
D-42349 Wuppertal
Tel: +49 (0)2 02 / 40 45-0
E-Mail: info@wera.de