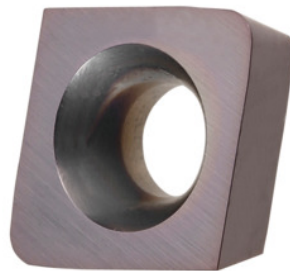


Garant**Indexable insert for milling CPHX 09T305 ER, for precision finishing cutters, HB4015****Order data**

Order number	212572 ST1400
GTIN	4062406099183
Item class	21A

Description**Version:**

- Inserts with improved wiper geometry for more efficient machine processes in tool and die manufacture.
- Extreme time saving available due to large steepover and high feed rate per tooth.
- Milling inserts with radial and axial wiper geometry.

Concentricity ± 0.020 mm.

Recommendation:

For pure face milling operations, reduce V_c by 30%.

Note:

Standard application values for a_e 0.2 mm.

L_{wa} represents the axial wiper length.

L_{wr} represents the radial wiper length.

Technical description

Type	ST1400
Corner radius	0.5 mm

Insert thickness S	3.97 mm
ISO code indexable insert	CPHX 09T305 ER
Type	HB4015
Tool material	Carbide
Axial length of wiper	1 mm
Radial length of wiper	2 mm
Corner radius R ₁	0.5 mm
Feed f _z in steel < 1400 N/mm ²	0.25 mm
Number of changes/inserts	2
Type of product	Indexable insert for milling