



Post Office Box 97  
 Benton Harbor, Michigan  
 Ph: 269/926-6171  
 Fax: 269/925-8288

PART NUMBER: STD151  
 REVISION: E

## Product Specifications

Model Number	MAX. PRESS.		MAX. SPEED	HP	kW	Net Wt.	
	bar.	PSI				lbs.	kg
1UP-NRV-4	5.6	80	6,000 RPM	.42	0.33	3	1.4
1UP-NRV-11	5.6	80	6,000 RPM	.42	0.33	3	1.4

SOUND LEVEL 78 dB(A) MAX.

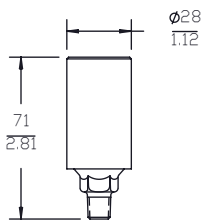
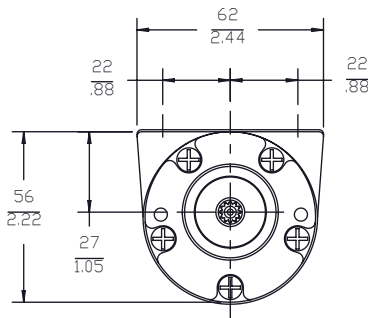
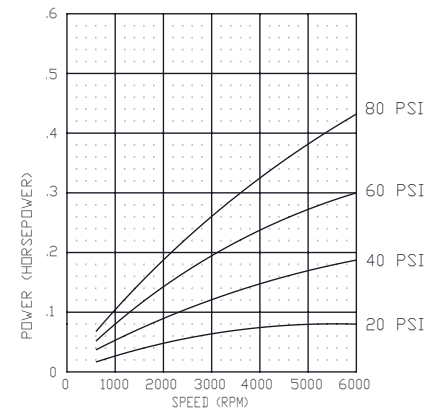
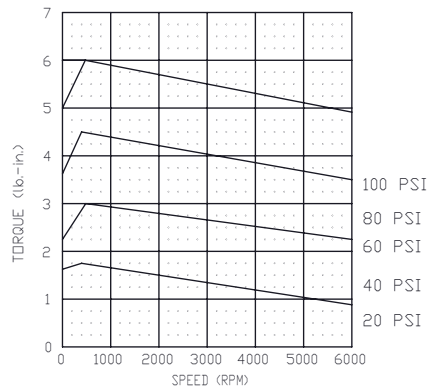
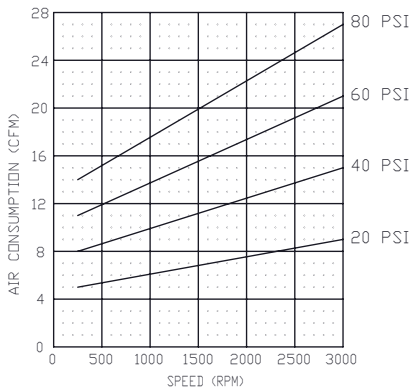
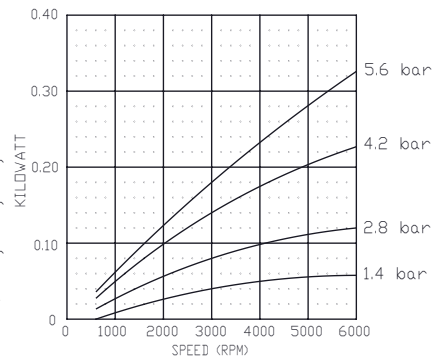
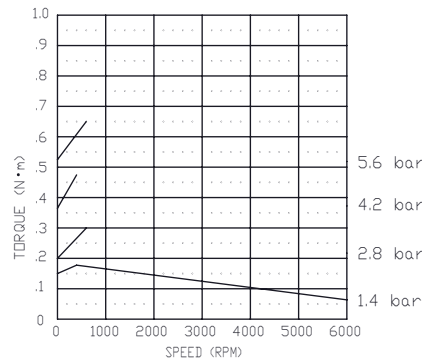
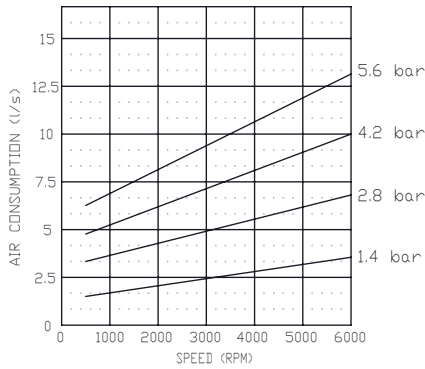
NORMAL AMBIENT +1°C. - 120°C.

RELATIVE HUMIDITY 0% - 100%

ENVIRONMENT HAZARDOUS AMBIENT COMBUSTIBLE  
 GAS AND DUST +1±C TO +40±C

CONFORMS TO EUROPEAN STANDARD EN13463-1 NON-ELECTRICAL  
 EQUIPMENT FOR EXPLOSIVE ATMOSPHERES GROUP II CAT 2  
 (GAS & DUST), PROTECTED BY CONSTRUCTION (SURFACE TEMP RATED 135±C)

\* TECHNICAL DATA SUBJECT TO CHANGE  
 WITHOUT NOTICE.



MUFFLER ASSEMBLY  
 SHIPPED UNATTACHED

