



AK Series

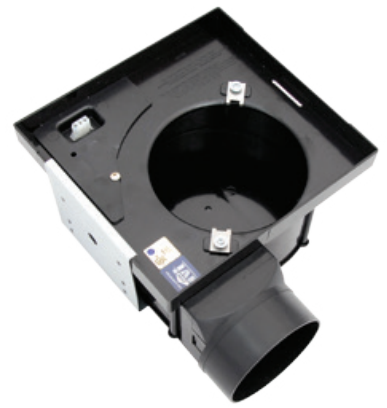
HUMIDITY SENSING MODELS
(AK80H, AK100H, LEDAK80H, LEDAK100H)

Integrated humidistat senses the humidity level of the room and turns the fan on until the humidity level is below the preset level. Can be set up to 80% RH.

- **ENERGY STAR® Certified**
- Solutions for **ASHRAE 62.2** continuous whole house ventilation or local ventilation (models with a sone rating of 1.0 or below can be used for whole house ventilation)
- Round duct connector with damper protects against backdrafts
- Listed for installation over a tub or shower on a GFCI circuit
- Hanger bar installation
- Select models available in contractor packs (see page 38 for details)
- **LEDAK SERIES:** Moonstone glass light lens with **INCLUDED** LED lamp

MODEL	CFM @ .1 SP	CFM @ .25 SP	SONES @ .1 SP	MAX. FAN WATTS	SPEEDS	LIGHTING	HUMIDITY SENSOR	LISTING	ASHRAE 62.2	TITLE 24	DUCT SIZE	HOUSING SIZE
AK50S	50	40	0.5	14.5	Single	N/A	NO	UL	Whole House/Local	YES	4"	10 7/8"W x 9 3/8"D x 7 7/8"H
AK80LS-1	80	68	1.0	28.1	Single	N/A	NO	UL	Whole House/Local	YES	4"	10 7/8"W x 9 3/8"D x 7 7/8"H
AK80	80	68	1.5	27.6	Single	N/A	NO	UL	Local	YES	4"	10 7/8"W x 9 3/8"D x 7 7/8"H
AK80H	80	68	1.0	28.1	Single	N/A	YES	UL	Whole House/Local	YES	4"	10 7/8"W x 9 3/8"D x 7 7/8"H
AK90	90	75	1.5	25.4	Single	N/A	NO	UL	Local	YES	4"	10 7/8"W x 9 3/8"D x 7 7/8"H
AK110PN	100	83	2.0	26.4	Single	N/A	NO	UL	Local	YES	4"	10 7/8"W x 9 3/8"D x 7 7/8"H
AK100H	100	83	2.0	26.4	Single	N/A	YES	UL	Local	YES	4"	10 7/8"W x 9 3/8"D x 7 7/8"H
AK100D	50 / 100	83	0.4 / 2.0	26.4	Dual	N/A	NO	UL	Whole House/Local	YES	4"	10 7/8"W x 9 3/8"D x 7 7/8"H
AKV	30 - 100	82	<0.3 - 2.0	26.4	Single	N/A	NO	UL	Whole House/Local	YES	4"	10 7/8"W x 9 3/8"D x 7 7/8"H
LEDAK50	50	35	0.3	16.0	Single	LED	NO	UL	Whole House/Local	YES	4"	10 7/8"W x 9 3/8"D x 7 7/8"H
LEDAK80	80	67	1.2	27.6	Single	LED	NO	UL	Local	YES	4"	10 7/8"W x 9 3/8"D x 7 7/8"H
LEDAK80H	80	67	1.2	27.6	Single	LED	YES	UL	Local	YES	4"	10 7/8"W x 9 3/8"D x 7 7/8"H
LEDAK100	100	83	2.0	26.5	Single	LED	NO	UL	Local	YES	4"	10 7/8"W x 9 3/8"D x 7 7/8"H
LEDAK100H	100	83	2.0	26.5	Single	LED	YES	UL	Local	YES	4"	10 7/8"W x 9 3/8"D x 7 7/8"H
LEDAK100D	50 / 100	83	0.4 / 2.0	26.5	Dual	LED	NO	UL	Local	YES	4"	10 7/8"W x 9 3/8"D x 7 7/8"H



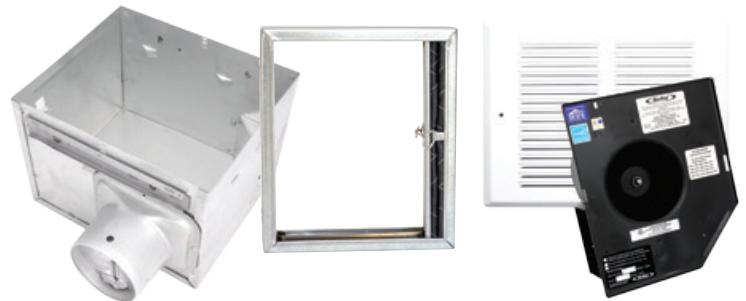


CONTRACTOR PACKS

Sold in bulk packs for larger projects, contractor packs allow the housing that is needed for rough-in installation to be sent first. Then after the interior is completed, the internal workings of the unit (motor/blade/grill) can be received and installed.

HOUSINGS	MOTOR/ BLADE/GRILL	#PER PACK	CFM/ SONES	DUCT SIZE	SINGLE PACK MODEL #	SINGLE PACK PAGE
AKLS6 SERIES						
AK-2A6	AK80LS6T	4	80/0.5	6" plastic	AK80LS6	13
	AK100LS6T	4	100/1.0	6" plastic	AK100LS6	13
AK-2A6H	AK80LS6T	4	80/0.5	6" plastic	AK80LS6H	13
	AK100LS6T	4	100/1.0	6" plastic	AK100LS6H	13
AK SERIES						
AKX-1A	AK80LS1T	4	80/1.0	4" plastic	AK80LS-1	15
	AK80MBG	4	80/1.5	4" plastic	AK80	15
	AK90MBG	4	90/1.5	4" plastic	AK90	15
	AK110PNT	4	100/2.0	4" plastic	AK110PN	15
AKX-1HA	AK80LS1T	4	80/1.0	4" plastic	AK80H	15
	AK90MBG	4	90/1.5	4" plastic	AK90H	15
	AK110PNT	4	100/2.0	4" plastic	AK100H	15
BFQ SERIES						
BFQHSG	BFQ50T	4	50/0.6	4" plastic	BFQ50	19
	BFQ75T	4	70/2.0	4" plastic	BFQ75	19
	BFQ80T	4	80/2.0	4" plastic	BFQ80	19
	BFQ90MBG	4	90/3.0	4" plastic	BFQ90	19
	BFQ110MBG	4	100/3.5	4" plastic	BFQ110	19
BFQ140MBG	BFQ140MBG	4	120/5.0	4" plastic	BFQ140	19
	BFQ2HSG	BFQ50T	4	50/0.8	4" plastic	BFQ50W
BFQ75T	BFQ75T	4	70/2.0	4" plastic	BFQ70W	20
	BFQLHSG	BFQL50T	4	50/0.8	4" plastic	BFQL50
BFQL70T	BFQL70T	4	70/2.0	4" plastic	BFQL70	21
	AS SERIES					
ASLC12HSG	ASLC50MBG	12 / 4	50/3.0	4" plastic	ASLC50	27
	ASLC70MBG	12 / 4	70/4.0	4" plastic	ASLC70	27
ASHSG	AS50MBG	6	50/4.0	3" plastic	AS50	27
	AS70MBG	6	70/5.5	3" plastic	AS70	27
ATL18HSG	AS50MBG	18 / 6	50/3.0	4" plastic	AS54	27
	AS70MBG	18 / 6	70/5.5	4" plastic	N/A	27
COMBINATION CERAMIC HEATERS						
AK55LHSG	AK55LT	1	70/5.0	4" metal	AK55L	33

FIRE RATED Series



HOUSINGS	MOTOR/ BLADE/GRILL	DAMPER	#PER PACK	CFM/ SONES	DUCT SIZE	SINGLE PACK MODEL #	SINGLE PACK PAGE
ENERGY STAR CERTIFIED FIRE RATED SERIES							
AKFH2	FAK50ST	AKFD2	4	50/0.6	4" metal	FRAK50S	30
	FAK80T	AKFD2	4	80/1.0	4" metal	FRAK80	30
	FAK90T	AKFD2	4	90/1.5	4" metal	FRAK90	30
	FAK100T	AKFD2	4	100/2.0	4" metal	FRAK100	30
AKFH2D	FAK100DT	AKFD2	4	100/2.0	4" metal	FRAK100D	X
ENERGY STAR CERTIFIED FIRE RATED SERIES with HUMIDITY SENSOR							
AKFH2H	FAK50T	AKFD2	4	50/0.6	4" metal	FRAK50H	X
	FAK80T	AKFD2	4	80/1.0	4" metal	FRAK80H	30
	FAK90T	AKFD2	4	90/1.5	4" metal	FRAK90H	X
	FAK100T	AKFD2	4	100/2.0	4" metal	FRAK100H	30
AKFH2DH	FAK100DT	AKFD2	4	100/2.0	4" metal	FRAK100DH	X
FIRE RATED SERIES							
AKFH1	FA50T	AKFD1	4	50/3.0	3" metal	FRAS50	31
	FA70T	AKFD1	4	70/5.0	3" metal	FRAS70	31

X Model only available in contractor pack



SPECIFICATIONS

MODEL	CFM	SONES	SOUND LEVEL	LIGHTING	ENERGY STAR	CALGREEN	ASHRAE 62.2	LISTING	DUCT SIZE	HOUSING SIZE	PAGE
D4S	40-120	<0.3 - 0.3	Almost Silent	N/A	YES	Other Rooms	Whole Building/Local	ETL	6"	12 $\frac{1}{8}$ "W x 12 $\frac{3}{4}$ "D x 9 $\frac{7}{8}$ "H	7
D4D	40-120	<0.3 - 0.3	Almost Silent	N/A	YES	Other Rooms	Whole Building/Local	ETL	6"	12 $\frac{1}{8}$ "W x 12 $\frac{3}{4}$ "D x 9 $\frac{7}{8}$ "H	7
DL4S	30-130	<0.3 - 0.3	Almost Silent	LED	YES	Other Rooms	Whole Building/Local	ETL	6"	12 $\frac{1}{8}$ "W x 12 $\frac{3}{4}$ "D x 9 $\frac{7}{8}$ "H	7
DL4D	30-130	<0.3 - 0.3	Almost Silent	LED	YES	Other Rooms	Whole Building/Local	ETL	6"	12 $\frac{1}{8}$ "W x 12 $\frac{3}{4}$ "D x 9 $\frac{7}{8}$ "H	7
D4SH	40-120	<0.3 - 0.3	Almost Silent	N/A	YES	Bathrooms	Whole Building/Local	ETL	6"	12 $\frac{1}{8}$ "W x 12 $\frac{3}{4}$ "D x 9 $\frac{7}{8}$ "H	7
D4DH	40-120	<0.3 - 0.3	Almost Silent	N/A	YES	Bathrooms	Whole Building/Local	ETL	6"	12 $\frac{1}{8}$ "W x 12 $\frac{3}{4}$ "D x 9 $\frac{7}{8}$ "H	7
DL4SH	30-130	<0.3 - 0.3	Almost Silent	LED	YES	Bathrooms	Whole Building/Local	ETL	6"	12 $\frac{1}{8}$ "W x 12 $\frac{3}{4}$ "D x 9 $\frac{7}{8}$ "H	7
DL4DH	30-130	<0.3 - 0.3	Almost Silent	LED	YES	Bathrooms	Whole Building/Local	ETL	6"	12 $\frac{1}{8}$ "W x 12 $\frac{3}{4}$ "D x 9 $\frac{7}{8}$ "H	7
EVD	30-150	<0.3	Almost Silent	N/A	YES	Other Rooms	Whole Building/Local	ETL	6"	12 $\frac{1}{8}$ "W x 12 $\frac{3}{4}$ "D x 9 $\frac{7}{8}$ "H	9
EVL D	30-150	<0.3	Almost Silent	LED	YES	Other Rooms	Whole Building/Local	ETL	6"	12 $\frac{1}{8}$ "W x 12 $\frac{3}{4}$ "D x 9 $\frac{7}{8}$ "H	9
EVDGH	30-150	<0.3	Almost Silent	N/A	YES	Bathrooms	Whole Building/Local	ETL	6"	12 $\frac{1}{8}$ "W x 12 $\frac{3}{4}$ "D x 9 $\frac{7}{8}$ "H	9
EVL DGH	30-150	<0.3	Almost Silent	LED	YES	Bathrooms	Whole Building/Local	ETL	6"	12 $\frac{1}{8}$ "W x 12 $\frac{3}{4}$ "D x 9 $\frac{7}{8}$ "H	9
EVDH	30-150	<0.3	Almost Silent	N/A	YES	Bathrooms	Whole Building/Local	ETL	6"	12 $\frac{1}{8}$ "W x 12 $\frac{3}{4}$ "D x 9 $\frac{7}{8}$ "H	9
EVL DH	30-150	<0.3	Almost Silent	LED	YES	Bathrooms	Whole Building/Local	ETL	6"	12 $\frac{1}{8}$ "W x 12 $\frac{3}{4}$ "D x 9 $\frac{7}{8}$ "H	9
E80S	80	<0.3	Almost Silent	N/A	YES	Other Rooms	Whole Building/Local	ETL	6"	12 $\frac{1}{8}$ "W x 12 $\frac{3}{4}$ "D x 9 $\frac{7}{8}$ "H	11
E110S	110	<0.3	Almost Silent	N/A	YES	Other Rooms	Whole Building/Local	ETL	6"	12 $\frac{1}{8}$ "W x 12 $\frac{3}{4}$ "D x 9 $\frac{7}{8}$ "H	11
E130S	130	<0.3	Almost Silent	N/A	YES	Other Rooms	Whole Building/Local	ETL	6"	12 $\frac{1}{8}$ "W x 12 $\frac{3}{4}$ "D x 9 $\frac{7}{8}$ "H	11
EL80S	80	<0.3	Almost Silent	LED	YES	Other Rooms	Whole Building/Local	ETL	6"	12 $\frac{1}{8}$ "W x 12 $\frac{3}{4}$ "D x 9 $\frac{7}{8}$ "H	11
EL130S	130	<0.3	Almost Silent	LED	YES	Other Rooms	Whole Building/Local	ETL	6"	12 $\frac{1}{8}$ "W x 12 $\frac{3}{4}$ "D x 9 $\frac{7}{8}$ "H	11
E80SGH	80	<0.3	Almost Silent	N/A	YES	Bathrooms	Whole Building/Local	ETL	6"	12 $\frac{1}{8}$ "W x 12 $\frac{3}{4}$ "D x 9 $\frac{7}{8}$ "H	11
E130SGH	130	<0.3	Almost Silent	N/A	YES	Bathrooms	Whole Building/Local	ETL	6"	12 $\frac{1}{8}$ "W x 12 $\frac{3}{4}$ "D x 9 $\frac{7}{8}$ "H	11
EL80SGH	80	<0.3	Almost Silent	LED	YES	Bathrooms	Whole Building/Local	ETL	6"	12 $\frac{1}{8}$ "W x 12 $\frac{3}{4}$ "D x 9 $\frac{7}{8}$ "H	11
EL130SGH	130	<0.3	Almost Silent	LED	YES	Bathrooms	Whole Building/Local	ETL	6"	12 $\frac{1}{8}$ "W x 12 $\frac{3}{4}$ "D x 9 $\frac{7}{8}$ "H	11
E80SH	80	<0.3	Almost Silent	N/A	YES	Bathrooms	Whole Building/Local	ETL	6"	12 $\frac{1}{8}$ "W x 12 $\frac{3}{4}$ "D x 9 $\frac{7}{8}$ "H	11
E130SH	130	<0.3	Almost Silent	N/A	YES	Bathrooms	Whole Building/Local	ETL	6"	12 $\frac{1}{8}$ "W x 12 $\frac{3}{4}$ "D x 9 $\frac{7}{8}$ "H	11
EL80SH	80	<0.3	Almost Silent	LED	YES	Bathrooms	Whole Building/Local	ETL	6"	12 $\frac{1}{8}$ "W x 12 $\frac{3}{4}$ "D x 9 $\frac{7}{8}$ "H	11
EL130SH	130	<0.3	Almost Silent	LED	YES	Bathrooms	Whole Building/Local	ETL	6"	12 $\frac{1}{8}$ "W x 12 $\frac{3}{4}$ "D x 9 $\frac{7}{8}$ "H	11
AK150LS	150	0.9	Very Quiet	N/A	YES	Other Rooms	Local	UL	6"	12 $\frac{1}{8}$ "W x 12 $\frac{3}{4}$ "D x 9 $\frac{7}{8}$ "H	13
AK200LS	200	1.2	Quiet	N/A	YES	Other Rooms	Local	UL	6"	12 $\frac{1}{8}$ "W x 12 $\frac{3}{4}$ "D x 9 $\frac{7}{8}$ "H	13
AK280LS	280	3.0	Quiet	N/A	YES	Other Rooms	Local	UL	6"	12 $\frac{1}{8}$ "W x 12 $\frac{3}{4}$ "D x 9 $\frac{7}{8}$ "H	13
AK80LS6	80	0.5	Very Quiet	N/A	YES	Other Rooms	Whole Building/Local	UL	6"	10 $\frac{7}{8}$ "W x 9 $\frac{3}{8}$ "D x 7 $\frac{7}{8}$ "H	13
AK90LS6	90	0.8	Very Quiet	N/A	YES	Other Rooms	Whole Building/Local	UL	6"	10 $\frac{7}{8}$ "W x 9 $\frac{3}{8}$ "D x 7 $\frac{7}{8}$ "H	13
AK100LS6	100	1.0	Very Quiet	N/A	YES	Other Rooms	Whole Building/Local	UL	6"	10 $\frac{7}{8}$ "W x 9 $\frac{3}{8}$ "D x 7 $\frac{7}{8}$ "H	13
AK110LS6	110	1.4	Quiet	N/A	YES	Other Rooms	Local	UL	6"	10 $\frac{7}{8}$ "W x 9 $\frac{3}{8}$ "D x 7 $\frac{7}{8}$ "H	13
AK80LS6H	80	0.5	Very Quiet	N/A	YES	Bathrooms	Whole Building/Local	UL	6"	10 $\frac{7}{8}$ "W x 9 $\frac{3}{8}$ "D x 7 $\frac{7}{8}$ "H	13
AK100LS6H	100	1.0	Very Quiet	N/A	YES	Bathrooms	Whole Building/Local	UL	6"	10 $\frac{7}{8}$ "W x 9 $\frac{3}{8}$ "D x 7 $\frac{7}{8}$ "H	13
AK80LS	80	0.7	Very Quiet	N/A	YES	Other Rooms	Whole Building/Local	UL	4"	10 $\frac{7}{8}$ "W x 9 $\frac{3}{8}$ "D x 7 $\frac{7}{8}$ "H	13
AK110LS	110	1.5	Quiet	N/A	YES	Other Rooms	Whole Building/Local	UL	4"	10 $\frac{7}{8}$ "W x 9 $\frac{3}{8}$ "D x 7 $\frac{7}{8}$ "H	13
AK50S	50	0.5	Very Quiet	N/A	YES	Other Rooms	Whole Building/Local	UL	4"	10 $\frac{7}{8}$ "W x 9 $\frac{3}{8}$ "D x 7 $\frac{7}{8}$ "H	15
AK80LS-1	80	1.0	Very Quiet	N/A	YES	Other Rooms	Whole Building/Local	UL	4"	10 $\frac{7}{8}$ "W x 9 $\frac{3}{8}$ "D x 7 $\frac{7}{8}$ "H	15
AK80	80	1.5	Quiet	N/A	YES	Other Rooms	Local	UL	4"	10 $\frac{7}{8}$ "W x 9 $\frac{3}{8}$ "D x 7 $\frac{7}{8}$ "H	15
AK80H	80	1.0	Very Quiet	N/A	YES	Bathrooms	Local	UL	4"	10 $\frac{7}{8}$ "W x 9 $\frac{3}{8}$ "D x 7 $\frac{7}{8}$ "H	15
AK90	90	1.5	Quiet	N/A	YES	Other Rooms	Local	UL	4"	10 $\frac{7}{8}$ "W x 9 $\frac{3}{8}$ "D x 7 $\frac{7}{8}$ "H	15
AK110PN	100	2.0	Quiet	N/A	YES	Other Rooms	Local	UL	4"	10 $\frac{7}{8}$ "W x 9 $\frac{3}{8}$ "D x 7 $\frac{7}{8}$ "H	15
AK100H	100	2.0	Quiet	N/A	YES	Bathrooms	Local	UL	4"	10 $\frac{7}{8}$ "W x 9 $\frac{3}{8}$ "D x 7 $\frac{7}{8}$ "H	15
AK100D	50 / 100	0.4 / 2.0	Quiet	N/A	YES	Other Rooms	Whole Building/Local	UL	4"	10 $\frac{7}{8}$ "W x 9 $\frac{3}{8}$ "D x 7 $\frac{7}{8}$ "H	15
AKV	30-100	<0.3-2.0	Quiet	N/A	YES	Other Rooms	Whole Building/Local	UL	4"	10 $\frac{7}{8}$ "W x 9 $\frac{3}{8}$ "D x 7 $\frac{7}{8}$ "H	15
LEDAK50	50	0.3	Very Quiet	LED	YES	Other Rooms	Whole Building/Local	UL	4"	10 $\frac{7}{8}$ "W x 9 $\frac{3}{8}$ "D x 7 $\frac{7}{8}$ "H	15
LEDAK80	80	1.2	Quiet	LED	YES	Other Rooms	Local	UL	4"	10 $\frac{7}{8}$ "W x 9 $\frac{3}{8}$ "D x 7 $\frac{7}{8}$ "H	15
LEDAK80H	80	1.2	Quiet	LED	YES	Bathrooms	Local	UL	4"	10 $\frac{7}{8}$ "W x 9 $\frac{3}{8}$ "D x 7 $\frac{7}{8}$ "H	15
LEDAK100	100	2.0	Quiet	LED	YES	Other Rooms	Local	UL	4"	10 $\frac{7}{8}$ "W x 9 $\frac{3}{8}$ "D x 7 $\frac{7}{8}$ "H	15
LEDAK100H	100	2.0	Quiet	LED	YES	Bathrooms	Local	UL	4"	10 $\frac{7}{8}$ "W x 9 $\frac{3}{8}$ "D x 7 $\frac{7}{8}$ "H	15
LEDAK100D	50 / 100	0.4 / 2.0	Quiet	LED	YES	Other Rooms	Whole Building/Local	UL	4"	10 $\frac{7}{8}$ "W x 9 $\frac{3}{8}$ "D x 7 $\frac{7}{8}$ "H	15

