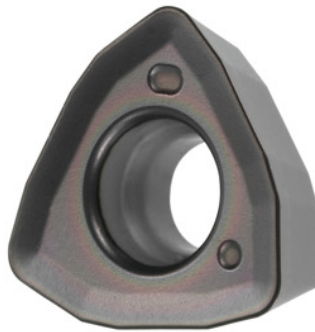


**Garant**

**Indexable insert for milling XDMT120516ZDSR, for high feed rate indexable face mills, HB4020**

**Order data**

Order number	212887 ST900
GTIN	4045197943170
Item class	21A

**Description****Note:**

Standard application values for  $a_e = 0.5...1 \times D / a_{p,max}$

**Technical description**

Feed $f_z$ per tooth	1.2 mm
Type	ST900
Corner radius	1,6 mm
Insert thickness S	5.56 mm
ISO code indexable insert	XDMT120516ZDSR
Type	HB4020
Tool material	Carbide
recommended cutting depth $a_{p,max}$	1.5 mm

maximum cutting depth $a_{p\max}$	2 mm
Programming radius at $a_{p\max}$	3 mm
Number of changes/inserts	3
Type of product	Indexable insert for milling

### User data

	Suitability	$V_c$	ISO code
Steel < 500 N/mm <sup>2</sup>	suitable	330 m/min	P
Steel < 750 N/mm <sup>2</sup>	suitable	280 m/min	P
Steel < 900 N/mm <sup>2</sup>	suitable	240 m/min	P
wet maximum	suitable only under restricted conditions		
wet minimum	suitable only under restricted conditions		
dry	suitable		
Air	suitable		