



## VESTIL MANUFACTURING CO.

2999 North Wayne Street, P.O. Box 507, Angola, IN 46703

Telephone: (260) 665-7586 -or- Toll Free (800) 348-0868

Fax: (260) 665-1339

[www.vestil.com](http://www.vestil.com) e-mail: [info@vestil.com](mailto:info@vestil.com)

# FM-T-DUMP FORK-MOUNTED TRASH CAN DUMPER



### Receiving Instructions

After delivery, remove the packaging from the product. Inspect the product closely to determine whether it sustained damage during transport. If damage is discovered, record a complete description of it on the bill of lading. If the product is undamaged, discard the packaging.

**NOTE:** The end-user is solely responsible for confirming that product design, use, and maintenance comply with laws, regulations, codes, and mandatory standards applied where the product is used.

### Technical Service & Replacement Parts

For answers to questions not addressed in these instructions and to order replacement parts, labels, and accessories, call our Technical Service and Parts Department at (260) 665-7586. The department can also be contacted online at [http://www.vestil.com/parts\\_info.htm](http://www.vestil.com/parts_info.htm).

### Electronic copies of Instruction Manuals

Additional copies of this instruction manual may be downloaded from <https://www.vestil.com/page-manuals.php>.

Table of Contents	Page
<a href="#">Applicable Regulatory and National Consensus Standards</a> .....	2
<a href="#">Record of Satisfactory Condition</a> .....	2
<a href="#">Signal Words</a> .....	3
<a href="#">Safety Instructions</a> .....	3
<a href="#">Product Description</a> .....	4
<a href="#">Specifications</a> .....	4
<a href="#">Exploded View and Bill of Materials</a> .....	5
<a href="#">Using the Trash Cart Dumper</a> .....	6 - 7
<a href="#">Inspecting &amp; Maintaining the Dumper</a> .....	7
<a href="#">Labeling Diagram</a> .....	8
<a href="#">Limited Warranty</a> .....	9

## APPLICABLE REGULATORY AND NATIONAL CONSENSUS STANDARDS

The FM-T-DUMP is designed to comply with general industry practices for material handling equipment. However, the end-user bears sole responsibility for ensuring that the product's installation, use, and maintenance align with all applicable federal, state, local, and international laws, regulations, codes, and mandatory standards in the jurisdiction of operation. Relevant standards include:

- **ANSI Z245.60 (Waste Containers - Compatibility Dimensions):** This American National Standard establishes dimensional requirements for waste containers used in the collection, compaction, and transportation of solid waste and recyclables. The FM-T-DUMP is compatible exclusively with C-type trash carts as defined in ANSI Z245.60, such as the Vestil TH-64 series 64-gallon containers or approved equivalents. Using non-compatible carts may result in instability, equipment failure, or injury.
- **OSHA Regulations (e.g., 29 CFR 1910.178 - Powered Industrial Trucks):** Ensure fork truck operations involving the dumper adhere to OSHA guidelines for attachments, load stability, and operator training to prevent accidents.
- **General Compliance Notes:** The dumper does not inherently certify compliance with specific environmental, waste management, or accessibility standards (e.g., EPA regulations or ADA requirements). Users must verify compatibility with site-specific rules, including those related to waste handling, equipment safety, and ergonomic practices. Modifications to the dumper void the warranty and may violate standards.

For the latest versions of these standards or additional regulatory guidance, consult official sources such as the American National Standards Institute (ANSI) or the Occupational Safety and Health Administration (OSHA). If uncertainties arise, seek professional advice to ensure full compliance.

## RECORD OF SATISFACTORY CONDITION

Before placing the FM-T-DUMP into service, conduct a thorough *initial inspection* to establish a baseline record of its condition. This record serves as a reference for future inspections and maintenance, enabling users to identify any subsequent damage, wear, or abnormalities that may develop over time.

Follow these steps to create the record:

1. **Visual Inspection:** Examine the entire unit for any visible defects, including dents, cracks, welds, corrosion, or deformation in the frame, fork pockets, axle brackets, handle brackets, latch mechanism, cable, safety chain, snap hook, and quick link. Confirm that all components are intact and free from shipping damage.
2. **Functional Check:** Test the release mechanism by manually operating the release handle (without a load) to ensure smooth rotation, proper latching, and automatic re-engagement. Verify that the star knobs on the handle brackets adjust freely and secure tightly. Inspect the grease fittings and apply lubricant if the mechanism does not operate smoothly.
3. **Label Verification:** Ensure all labels are present, legible, and securely attached as shown in the Labeling Diagram (refer to page 5 of this manual). Note any missing or damaged labels for immediate replacement.
4. **Documentation:** Photograph the unit from multiple angles, including close-ups of all key components, welds, labels, and potential wear points. Include date-stamped photos and written notes describing the condition (e.g., "Frame is square and free of rust; cable is unfrayed"). Store this record in a secure, accessible location alongside the manual for reference during periodic inspections.

If any issues are identified during this initial assessment, do not use the dumper. Contact the *TECHNICAL SERVICE* department at (260) 665-7586 or via [http://www.vestil.com/parts\\_info.htm](http://www.vestil.com/parts_info.htm) for guidance on repairs or replacements.

## SIGNAL WORDS

This manual uses SIGNAL WORDS to indicate the likelihood of personal injuries, as well as the probable seriousness of those injuries, if the product is misused in the ways described. Other signal words call attention to uses of the product likely cause property damage. The signal words used appear below along with the meaning of each word.

**⚠ DANGER**

Identifies a hazardous situation which, if not avoided, **WILL** result in DEATH or SERIOUS INJURY. Use of this signal word is limited to the most extreme situations.

**⚠ WARNING**

Identifies a hazardous situation which, if not avoided, **COULD** result in DEATH or SERIOUS INJURY.

**⚠ CAUTION**

Indicates a hazardous situation which, if not avoided, **COULD** result in MINOR or MODERATE injury.

**NOTICE**

Identifies practices likely to result in product/property damage, such as operation that might damage the crane.

## SAFETY INSTRUCTIONS

The most effective way to avoid injury is to exercise sound judgment when installing, using, inspecting, or maintaining this product. **Keep a copy of this manual in a location known, and accessible, to all persons who use the trash can dumper.**

### ⚠ WARNING

**Improper or careless operation could result in serious injury or death.**

- Read and understand the entire manual before assembling, installing, using, inspecting or servicing the product. Read the manual to refresh your understanding of proper use and maintenance procedures whenever necessary.
- DO NOT exceed the 1,000 lb. (~455kg) capacity of this dumper. The capacity appears on label 1153 which is applied to the product as shown in the [LABELING DIAGRAM](#) on p. 8. The total weight applied to the dumper (trash bin plus contents) must be less than the capacity.
- ONLY transport the dumper and trash bin with a forklift capable of supporting the weight of the dumper and a full capacity load.
- Make sure that the dumper/trash bin will not contact overhead objects during use.
- Inspect the product as described in [INSPECTING AND MAINTAINING THE CART DUMPER](#) on p. 7. DO NOT use the dumper unless it is in normal condition. DO NOT use the product until it is fully restored to normal condition. ONLY use manufacturer-approved replacement parts.
- DO NOT remove or obscure any label. All labels must be readable and undamaged. Replace labels as necessary. See [LABELING DIAGRAM](#).
- DO NOT modify the dumper! Modifications automatically void the [LIMITED WARRANTY](#) on p. 9, and might make the dumper unsafe to use.
- Inform all persons in the area that you are going to use the dumper, and instruct them to stay away from the fork lift and dumper during operation. Clear all debris from the path of travel.
- DO NOT transport, lift or dump trash carts that are not approved for use with the dumper. ONLY use the dumper with Vestil TH-64 (C type) trash carts. C type carts are described in ANSI Z245.60.
- Keep clear of the dumper while it is in use. DO NOT reach into the trash cart while it is emptied.
- DO NOT use the FM-T-Dump to lift broken or overloaded carts. A broken or overloaded cart might break free of the dumper and cause injury.
- DO NOT lift carts over people.
- DO NOT allow people to ride on the dumper, or in a cart engaged by the dumper.

## PRODUCT DESCRIPTION

The FM-T-DUMP Fork-Mounted Trash Can Dumper is a robust, steel-constructed attachment designed for use with fork trucks to facilitate the safe and efficient lifting, transporting, and dumping of compatible trash containers. This device enhances workplace productivity by allowing operators to handle heavy waste loads—up to a uniform capacity of 1,000 pounds (approximately 455 kg)—without exiting the fork truck cab, thereby reducing the risk of work-related injuries associated with manual lifting and dumping.

Key operational features include fork pockets for secure attachment to the fork truck, an adjustable mechanism to engage the trash cart's axle and handles, a safety chain to prevent detachment during use, and a pull-cable release system that enables controlled dumping from the operator's seat. The dumper is specifically engineered for compatibility with 64-gallon Vestil TH-64 series trash carts (classified as C-type containers per ANSI Z245.60 standards) or approved equivalents. Its powder-coated finish provides durability and resistance to corrosion, ensuring reliable performance in industrial, commercial, or municipal waste management environments.

## SPECIFICATIONS

Specifications documents for FM-T-DUMP trash cart dumpers are provided on Vestil's website. To access the appropriate specifications document, navigate to the relevant webpage: <https://www.vestil.com/product.php?FID=466>. Click the "Product Specifications Table" drop-down menu bar partway down the page. Scroll down to the entry for the model you purchased and click the button in the column titled "PDF's" that looks like a pencil inside a box. A PDF file will open. This file is the specifications document. Print a copy of the document and keep it with your copy of this manual. The following is an exemplar specifications document. However, design changes or model discontinuations could occur after publication of this manual. Consequently dimensions, net weight, and capacity in the provided exemplar document (below) could be out-of-date. Always acquire a copy of the model-specific Specifications document when the unit is purchased. If information in the Specifications document downloaded from the website differs from any information below, the downloaded Specifications document should be considered correct.

**FORK TRUCK MOUNTED TRASH CAN DUMPER - FM-T-DUMP**      APPROX WEIGHT: 185.93 lbs.  
DOES NOT INCLUDE WEIGHT OF POWER OR PACKAGING!!

\*\*\* ANY ADDITIONS, DELETIONS, OR OMISSIONS MUST BE CORRECTED ON THIS DRAWING AS THIS DRAWING WILL BE CONSIDERED ALL INCLUSIVE \*\*\*  
 ALL GRAPHICS PROVIDED ARE FOR REFERENCE ONLY. IF CERTAIN DIMENSIONS ARE CRITICAL PLEASE VERIFY THOSE DIMENSIONS WITH YOUR SALESPERSON

APPROX. WEIGHT / LOST LOAD = 185.93  
 MINIMUM EFFECTIVE THICKNESS = LESS THAN 1"  
 VERTICAL CENTER OF GRAVITY = 6 5/8"  
 HORIZONTAL CENTER OF GRAVITY = 21 13/16"

NEVER EXCEED LOAD CENTER RATING PER FORKTRUCK MANUFACTURERS GUIDELINES. DO NOT USE THIS FORK TRUCK ATTACHMENT IF LOAD WILL EXCEED FORK TRUCK MANUFACTURER'S LOAD CENTER RATING

**STANDARD FEATURES**  
 MODEL NUMBER IS FM-T-DUMP  
 OVERALL WIDTH IS 40 5/8"  
 OVERALL LENGTH IS 39 9/16"  
 OVERALL HEIGHT IS 41 15/16"  
 MAX CAPACITY IS 1,000 LBS  
 7 5/8"W x 2 5/8"H USABLE FORK POCKETS  
 FORK POCKETS ON 32 5/8" CENTERS  
 USED WITH 64 GALLON TRASH CAN (SERIES TH-64 OR EQUIVALENT)  
 DURABLE BAKED IN POWDER COATED BLUE FINISH

**SPECIAL FEATURES**  
 NONE

ADJUSTABLE HEIGHT HOOKS  
 4 1/2"  
 C.O.G.  
 21 13/16"  
 6 5/8"  
 29 3/4"  
 39 9/16"  
 17 1/4"  
 3/8"  
 40 5/8"

DIMENSION TOLERANCE ± 1/4"

**APPROVAL**

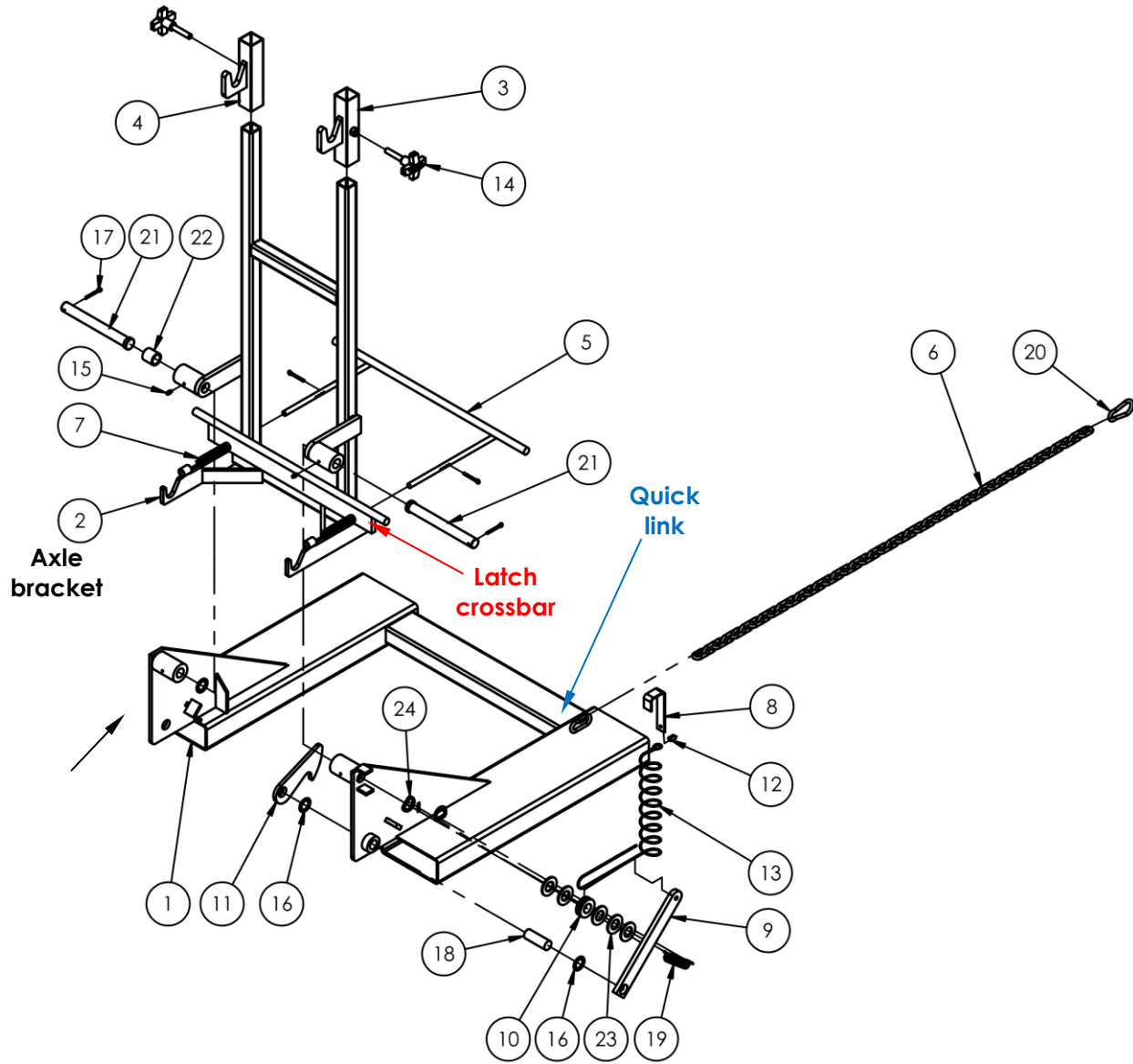
I, THE UNDERSIGNED, AGREE THAT THE PRODUCT AS REPRESENTED SATISFIES DESIGN AND DIMENSION REQUIREMENTS. I ALSO ACKNOWLEDGE MY DUTY TO CONFIRM PRODUCT AND INSTALLATION COMPLIANCE WITH ALL APPLICABLE FEDERAL, STATE AND LOCAL REGULATIONS AND STANDARDS.

**UNITS REQUIRING APPROVAL DRAWINGS OR MODIFIED ARE NON-RETURNABLE**  
 As drawn     As marked

Signed: \_\_\_\_\_ Date: \_\_\_\_\_  
 Printed Name: \_\_\_\_\_  
 LEAD TIME WILL START UPON RECEIPT OF SIGNED APPROVAL DRAWING

DISTRIBUTOR'S NAME: VESTIL MANUFACTURING		P.O.# X
DRAWN BY: LAS		W.O.# X
DATE: 06/26/2013	SALES: X	
REFERENCE: X	SCALE: 1:20	FILE NAME:
QUOTED LEAD TIME: X	QUOTE # X	37-007-024

### EXPLODED VIEW AND BILL OF MATRERIALS (37-006-024)

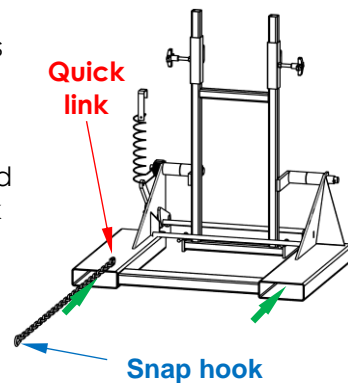


Item	Part No.	Description	Qty.	Item	Part No.	Description	Qty.
1	37-514-023	WELDMENT, FRAME	1	13	37-027-002	CABLE, 84" LG	1
2	37-514-022	WELDMENT, FRAME, UPRIGHT ("AXLE BRACKET")	1	14	99-025-001	KNOB- 1/2 THREAD DIAMETER	2
3	37-516-001	WELDMENT, CAN ADJ., RIGHT	1	15	5546062	GREASE ZERK, 3/16", STRAIGHT, DRIVE-IN	2
4	37-516-002	WELDMENT, CAN ADJ., LEFT	1	16	33444	MACHINE BUSHING, Ø 1 X 18 GA.	4
5	37-612-001	WELDMENT, LOCKING PIN	1	17	65127	COTTER PIN Z PLATED, 3/16 x 2	4
6	09-145-018	CHAIN, 5/16" x 56" LG	1	18	15-112-004	PIN, HANDLE	1
7	03-146-001	SPRING, LEVER	2	19	28-146-003	SPRING, RELEASE,	1
8	37-025-002	HANDLE, CHUTE RELEASE	1	20	08-145-041	SPECIALTY HARDWARE, SNAP HOOK, Ø5/16	1
9	37-025-005	HANDLE, LATCH	1	21	40-112-001	PIN, MAIN, CLEVIS	2
10	37-027-001	PULLEY	1	22	37-113-007	SPACER, PIN/FRAME SPACER	1
11	37-037-021	LOCK, CHUTE LATCH	1	23	33095	SAE FLAT WASHER, 1 1/16 I.D. X 2 O.D.	5
12	20-145-019	SPECIALTY HARDWARE, SWAGE SLEEVE	1	24	99-117-003	D-RING (1")	1

## USING THE TRASH CART DUMPER

**Step 1:** Inspect the cart dumper as described in the [INSPECTING & MAINTAINING...](#) section of this manual on p. 7.

**Step 2:** Drive forward and **insert the forks** into the fork pockets (see arrows in photo 1 below; move the safety chain out of the way of the forks). Continue driving forward until the ends of the fork pockets contact the heels of the forks. The forks will stick out of the opposite ends of the pockets.



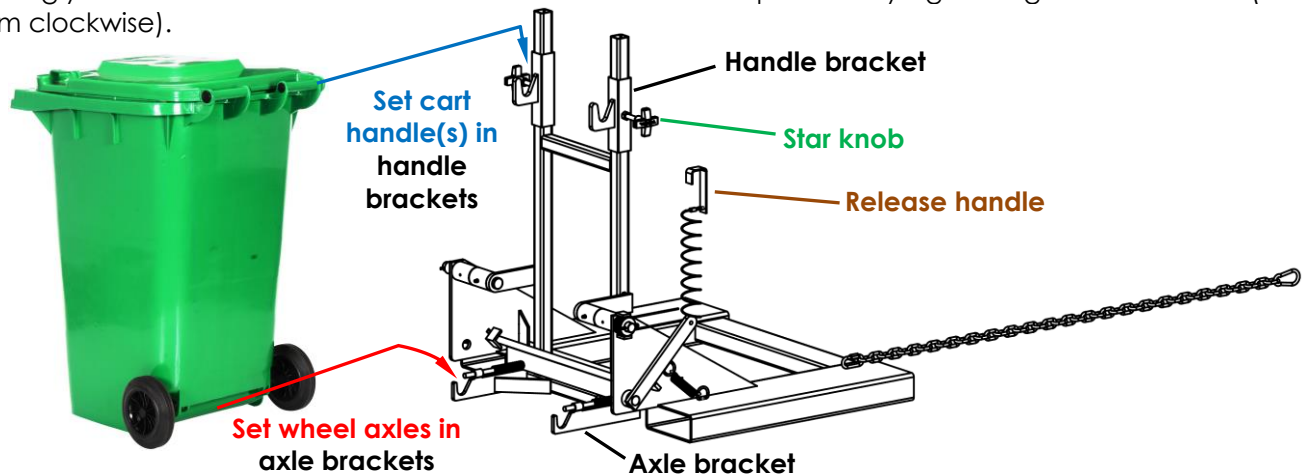
**Step 3:** Attach the safety chain to the carriage. Attach the snap hook to the chain or **quick link** so that there is *as little slack in the chain as possible*.

Wrap chain around fork carriage; then attach snap hook to chain or quick link



**Step 4:** Attach the **release handle** at the end of the cable to the roll cage of the forklift in a location that will prevent the cable from interfering with the operation of the forklift or getting in your way while driving.

**Step 5:** Engage a trash cart with the dumper. Position the cart in front of the dumper; then lift it and set the axle (of the cart) in the **axle brackets**. [NOTE: The size of the wheels might prevent the axle from settling to the bottom of the brackets. Step 8 addresses this situation.] Loosen the **star knobs** of the left and right **handle brackets**. Adjust the position of the handle brackets so that the handle of the trash cart fits snugly inside the handle slots. Fix the handle brackets in position by tightening the star knobs (turn them clockwise).



**Step 6:** Raise the forks slightly to elevate the wheels of the cart a few inches above the ground. Check the connections between 1) the **axle brackets** and the cart axle; and 2) cart handle(s) and **handle brackets**. If any connection is loose or unstable, lower the forks and make all necessary adjustments to achieve solid connections. If the cart cannot be stably engaged with the dumper, do not use it to lift or transport the cart.

**Step 7:** Elevate the forks and raise the cart a few inches above the ground. Drive to the dump site. Approach the receptacle (e.g. dumpster) and raise the forks to bring the wheels of the trash cart above the top of the dumpster. Drive forward until the entire dumper overhangs the dumpster. Forcefully pull the release cable to dump the trash cart.

**NOTE:** Pins slide over the top of the cart axle on both sides when the cable is pulled. These pins prevent the cart from jostling and coming out of the axle brackets during dumping.



Step 8: Back away from the dumpster while adjusting the elevation of the forks to prevent the cart from bumping against the wall of the dumpster. Once the trash cart is clear of the dumpster, lower the forks. When the lid of the cart is just a few inches above the ground, rotate the dumping mechanism back to the upright position. You should hear the latch lock (item 11) snap over the latch crossbar. See [EXPLODED VIEW AND BILL OF MATERIALS](#) on p. 5.

## **INSPECTING & MAINTAINING THE TRASH CART DUMPER**

Regular inspections and maintenance are necessary to keep the dumper in satisfactory condition. DO NOT use the dumper unless it is in satisfactory condition. Repair any item that is found to not be in normal operating condition during an inspection or use. If it is not possible to repair an item, replace it before returning the dumper to service.

Regular/Frequent: Inspect the listed components before the dumper is used for the first time and before each subsequent use.

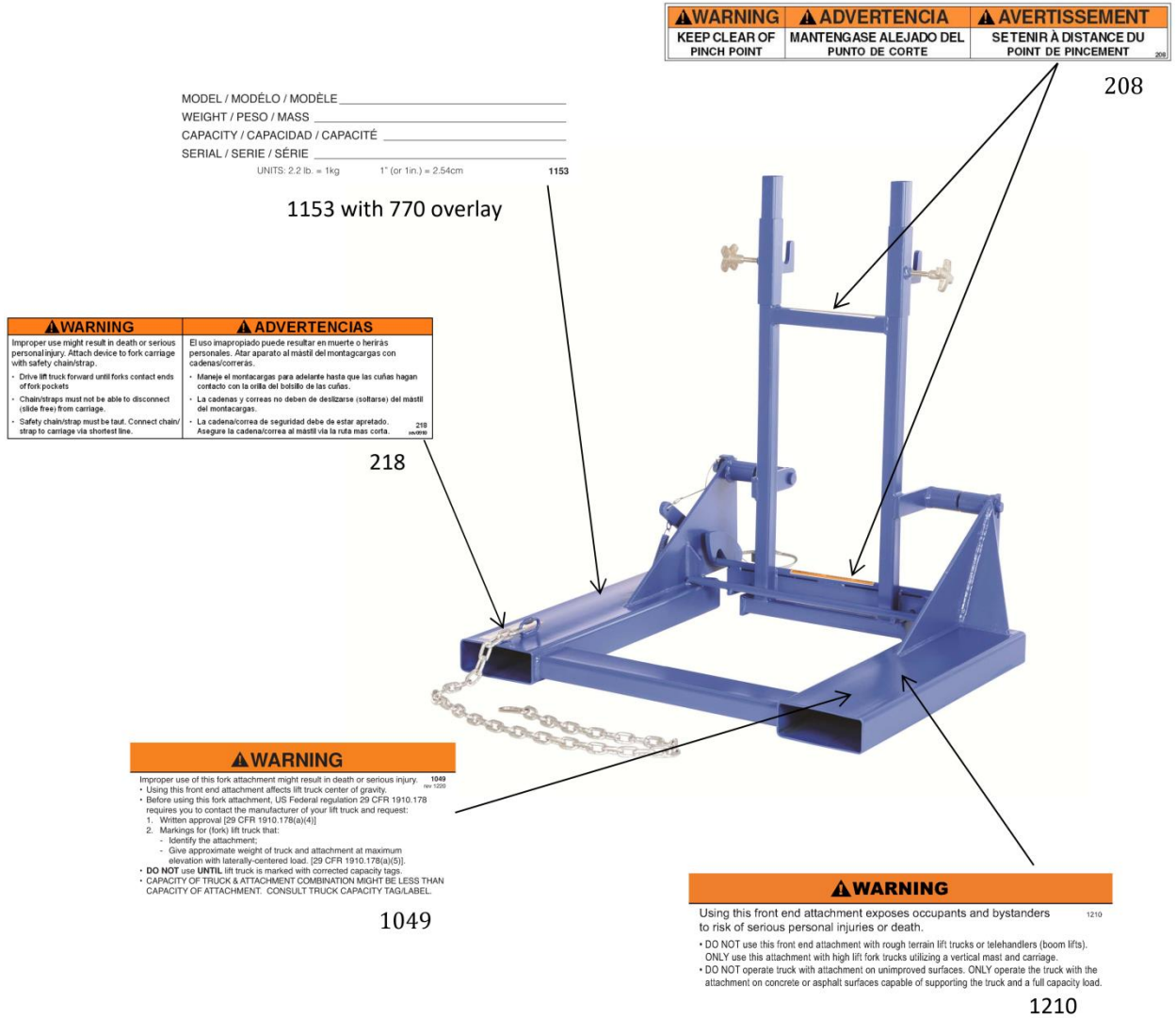
1. Cable: examine the cable for frays and other forms of damage (corrosion, birdcaging, etc.).
2. Frame: confirm that the frame is sound, i.e. no structural damage or deformation.
3. Safety chain, quick link, and snap hook (attached to the free end of the safety chain):
4. Labels: all labels should be readable and located on the dumper as diagrammed below. Replace all labels that are damaged, faded, or otherwise unreadable.
5. Latch/release mechanism: Proper functioning of the latch/release mechanism;

Periodic: At least 1 time per month, inspect:

1. Fasteners (hardware):
  - a. Bolts, nuts, washers, pins, cotter pins;
  - b. Chain and snap hook.
2. Fork pockets: confirm that each pocket is structurally sound, e.g. not severely worn or corroded.
3. Welds: confirm that all welds are intact.
4. Pivot points and pivot point pins.
5. Dumper release mechanism: confirm that the release mechanism functions properly. In particular, make sure that the chute latch releases properly when the cable is pulled and automatically reengages the upright frame when the frame is returned to the cart-carrying position. See [USING...](#), [Step 8](#), on p. 7. If the mechanism does not rotate smoothly or is really noisy when it rotates, apply grease through the 3/16 inch grease fittings. Components of the release mechanism include the following:
  - a. Release spring;
  - b. Upright frame
  - c. Latch handle;
  - d. Chute latch;
  - e. Handle pins;
  - f. Handle brackets;
  - g. Axle brackets.
6. Overall condition of frame: the structure should be clean, square and rigid, and free of rust and corrosion. Remove dirt and debris.

# LABELING DIAGRAM

Label content and location are subject to change, and therefore, your product might not be labeled exactly as shown in the diagram below. If the labels applied to your unit differ from those shown in the diagram, contact [TECHNICAL SERVICE](#) and report the inconsistency. Thoroughly photograph the unit when you first receive it as discussed in the [RECORD OF SATISFACTORY CONDITION](#) section. Make sure that your RECORD includes at least 1 photograph of each label. Replace all labels that are, or later become, damaged, missing, or not easily readable (e.g. faded). To order replacement labels, contact [TECHNICAL SERVICE](#) online at <https://www.vestil.com/page-parts-request.php> or by calling (260) 665-7586 and asking the operator to connect you to the [Parts Department](#).





## LIMITED WARRANTY

Vestil Manufacturing Company ("Vestil") warrants this product to be free of defects in material and workmanship during the warranty period. Our warranty obligation is to provide a replacement for a defective, original part covered by the warranty after we receive a proper request from the Warrantee (you) for warranty service.

### Who may request service?

Only a warrantee may request service. You are a warrantee if you purchased the product from Vestil or from an authorized distributor AND Vestil has been fully paid.

### Definition of "original part"?

An original part is a part used to make the product as shipped to the Warrantee.

### What is a "proper request"?

A request for warranty service is proper if Vestil receives: 1) a photocopy of the Customer Invoice that displays the shipping date; AND 2) a written request for warranty service including your name and phone number. Send requests by one of the following methods:

<u>US Mail</u>	<u>Fax</u>	<u>Email</u>
Vestil Manufacturing Company	(260) 665-1339	<a href="mailto:info@vestil.com">info@vestil.com</a>
2999 North Wayne Street, PO Box 507	<u>Phone</u>	Enter "Warranty service request" in subject field.
Angola, IN 46703	(260) 665-7586	

In the written request, list the parts believed to be defective and include the address where replacements should be delivered. After Vestil receives your request for warranty service, an authorized representative will contact you to determine whether your claim is covered by the warranty. Before providing warranty service, Vestil will require you to send the entire product, or just the defective part (or parts), to its facility in Angola, IN.

### What is covered under the warranty?

The warranty covers defects in the following original, dynamic parts: motors, hydraulic pumps, motor controllers, and cylinders. It also covers defects in original parts that wear under normal usage conditions ("wearing parts"), such as bearings, hoses, wheels, seals, brushes, and batteries.

### How long is the warranty period?

The warranty period for original dynamic components is 90 days. For wearing parts, the warranty period is 90 days. Both warranty periods begin on the date Vestil ships the product to the Warrantee. If the product was purchased from an authorized distributor, the periods begin when the distributor ships the product. Vestil may, at its sole discretion, extend a warranty period for products shipped from authorized distributors by up to 30 days to account for shipping time.

### If a defective part is covered by the warranty, what will Vestil do to correct the problem?

Vestil will provide an appropriate replacement for any covered part. An authorized representative of Vestil will contact you to discuss your claim.

### What is not covered by the warranty?

The Warrantee (you) are responsible for paying labor costs and freight costs to return the product to Vestil for warranty service.

### Events that automatically void this Limited Warranty.

- Misuse;
- Negligent assembly, installation, operation or repair;
- Installation/use in corrosive environments;
- Inadequate or improper maintenance;
- Damage sustained during shipping;
- Collisions or other accidents that damage the product;
- Unauthorized modifications: Do not modify the product IN ANY WAY without first receiving written authorization from Vestil.

### Do any other warranties apply to the product?

Vestil Manufacturing Co. makes no other express warranties. All implied warranties are disclaimed to the extent allowed by law. Any implied warranty not disclaimed is limited in scope to the terms of this Limited Warranty. Vestil makes no warranty or representation that this product complies with any state or local design, performance, or safety code or standard. Noncompliance with any such code or standard is not a defect in material or workmanship.