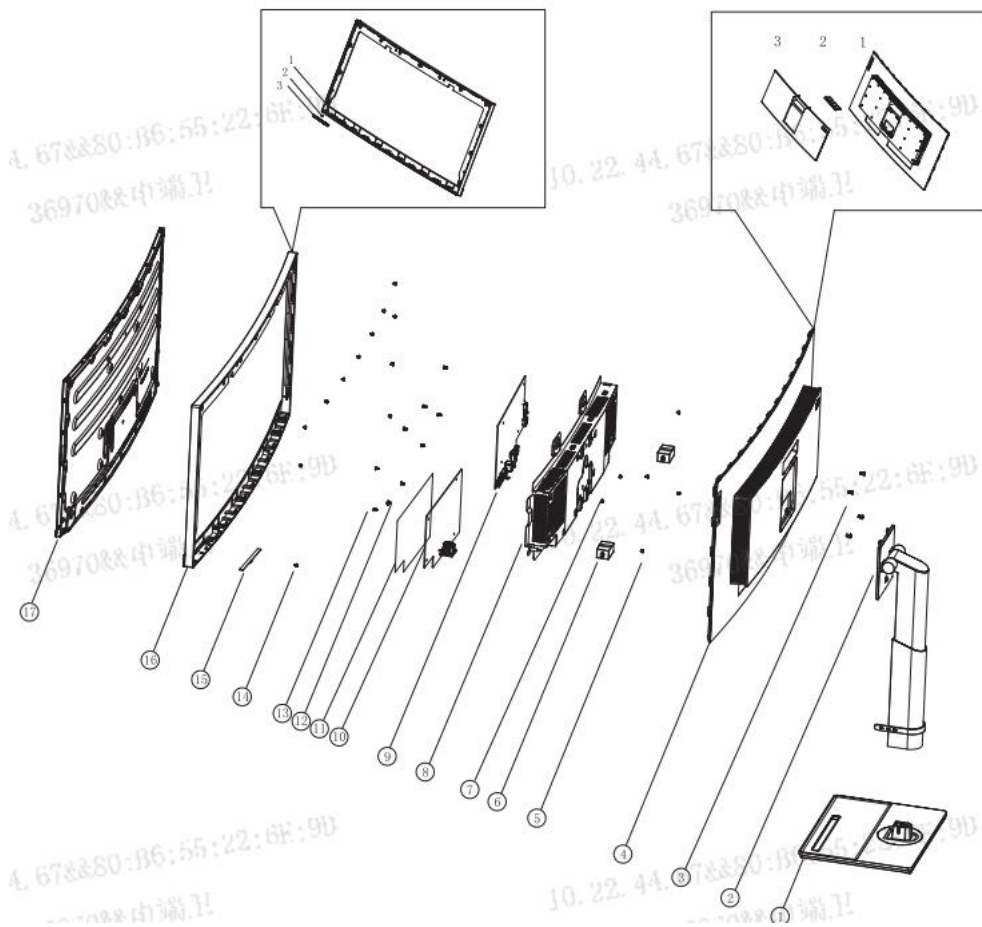


BOE.

## P34W-20 Simplified service manual for dismantling

Model Name: Lenovo P34W-20

# Exploded Diagram





NO.	Part Name
1	Stand
2	Neck
3	screw M4*8
4	REAR_COVER_ASSY
4-1	rearcover
4-2	Handle
4-3	Cover
5	screw M3*4
6	Speker L/R
7	screw M3*3
8	Shielding
9	MAIN_BOARD
10	POWER_BOARD
11	Nylon
12	screw M4*4
13	screw M3*6
14	screw M3*4
15	key Function
16	MIDDLE_FRAME_ASSY
16-1	Frame
16-2	Lens
16-3	key
17	Panel

## 1. Precaution

Please read the precaution as follows to prevent any damages to the LCD Monitor.

Make sure all power connector is removed. Be sure that the LCD Monitor is in power off status.




<p>Prepare soft cloth and sponge as working platform to place LCD monitor horizontally.</p>	
<p>Hold LCD by the side carefully and DON'T touch or press panel directly.</p>	

## 2. Appropriate tools

Select the Appropriate tools for disassembly and re-assembly.

Phillips screwdriver (#2)	
spacer screwdriver	
C/D disassembly tool	
Gloves or soft cloth	

### 3. Disassembly SOP

<p>Put the monitor on a flat surface (Put the EPE on under the monitor)</p>	
<p>Remove the bracket through the buckle</p>	
<p>Pull out stand</p>	

Remove the screw \* 4pcs

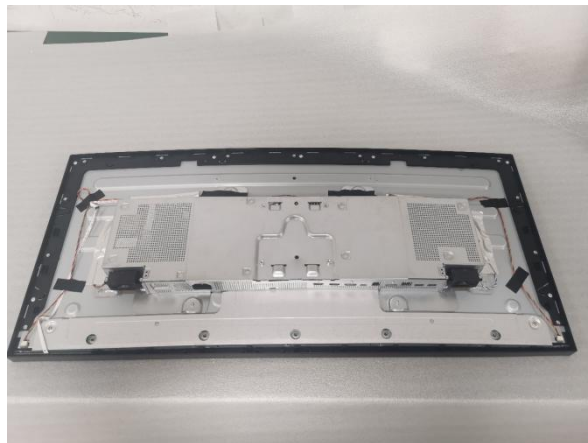
Tool : Screwdriver #2



Use the C/D disassembly tool to release Rear cover hook from disassemble hole on bottom



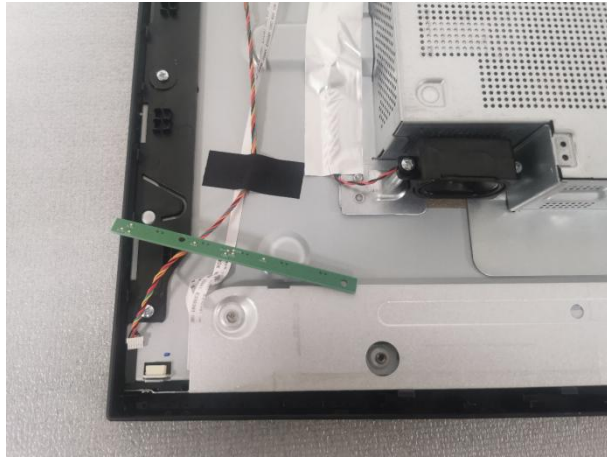
Remove All tape and foil



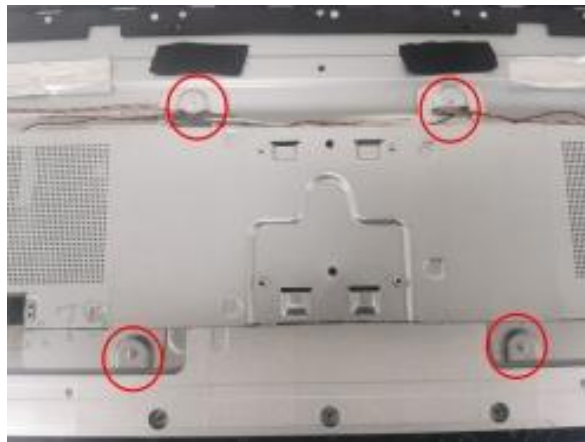
Unplug light bar line



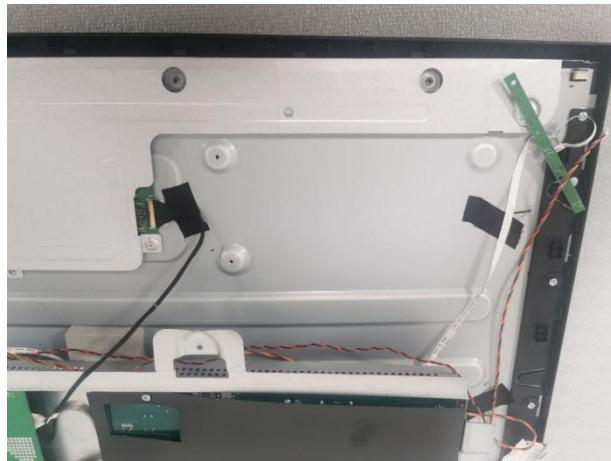
Take out the key board



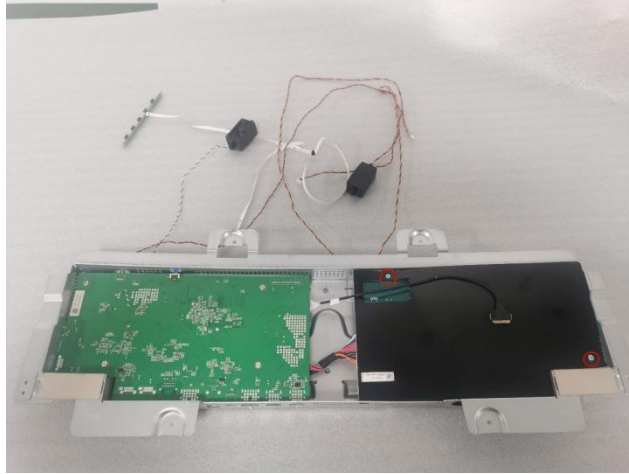
Remove All screw.  
Open the isolation cover.



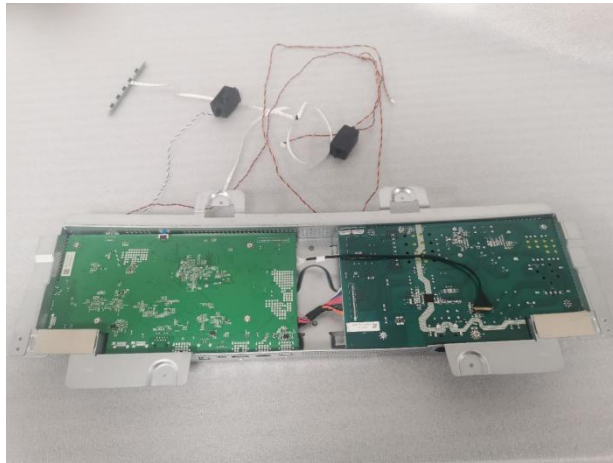
Take out the LVDS cable



Remove the isolation cover  
Remove All screw and Take out  
the mylar



Remove All screw.  
Tool : Screwdriver #2  
Tool : spacer screwdriver



Take out PCB

