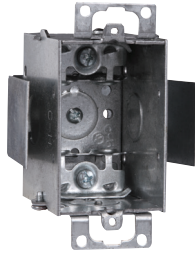


Steel switch boxes

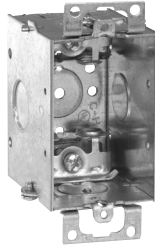
2 1/2" DEEP – GANGABLE – 12.5 CUBIC INCH CAPACITY

2" WIDE x 3" LONG FOR ARMORED & METAL-CLAD (MCI) CABLE – CLAMPS IN EACH END

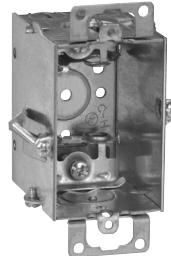
UL LISTED



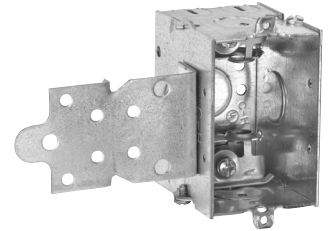
TP177



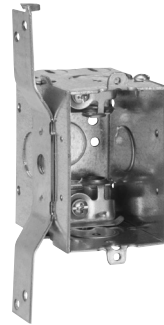
TP178



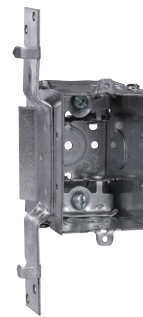
TP179 Hold-Tite



TP180



TP184



TP185

Cat. #	Bracket	Ears	Knockouts			Unit qty.	Wt. lbs. per 100
			Each end	Each side	Bottom		
TP177 ^A	Snap-in	Yes	2 - cable	1 - 1/2"	-	50	74
TP178 ^A	-	Yes	2 - cable	1 - 1/2"	1 - 1/2"	50	63
TP179 ^A	Hold-tite	Yes	2 - cable	-	1 - 1/2"	50	66
TP180 ^A	"F", set 1/2"	-	2 - cable, 1 - 1/2"	1 - 1/2"	1 - 1/2"	50	72
TP180G ^A	"F", set 1/2"	-	2 - cable, 1 - 1/2"	1 - 1/2"	1 - 1/2"	50	72
TP184 ^A	"S", set 5/8"	-	2 - cable, 1 - 1/2"	1 - 1/2"	1 - 1/2"	50	70
TP185 ^A	"VP", set 1/2"	-	2 - cable, 1 - 1/2"	1 - 1/2"	1 - 1/2"	50	74
TP185G ^A	"VP", set 1/2"	-	2 - cable, 1 - 1/2"	1 - 1/2"	1 - 1/2"	50	74

^A UL approved for use with aluminum interlocking grounding metal-clad cable, Type MCIA (Southwire MCAP[®]). MCAP[®] is a registered trademark of Southwire Company.

^F CSA certified. G indicates ground screw installed.

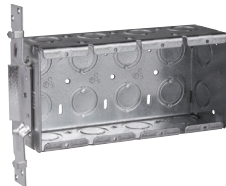
GANG BOXES SET BACK 1/2"

2 1/2" DEEP – 3 3/4" HIGH – 1/2" & 3/4" CONCENTRIC KOs

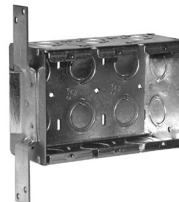
UL LISTED



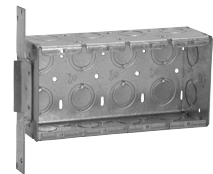
TP632



TP633



TP637



TP638

Cat. #	Gang	Bracket	Width	Knockouts			Capacity cu. in.	Unit qty.	Wt. lbs. per 100
				Each end	Each side	Bottom			
TP632	3	VP	5 7/16"	2	3	6	46.5	5	143
TP633	4	VP	7 7/8"	2	4	8	62.0	5	179
TP637	3	VS	5 7/16"	2	3	6	46.5	5	143
TP638	4	VS	7 7/8"	2	4	8	62.0	5	179

Steel boxes