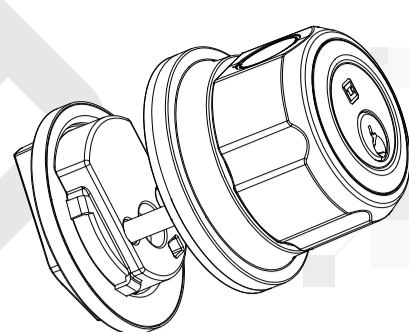




GEEK TECHNOLOGY CO., LTD
120 US Route 46,
Parapony, NJ 07054,
Toll Free
1-844-801-8880

GeekTale

User Manual
Model No.: F08A (Rechargeable battery Smart lock)



IMPORTANT: Read the instructions carefully before operating the appliance and keep them for future reference.

WELCOME

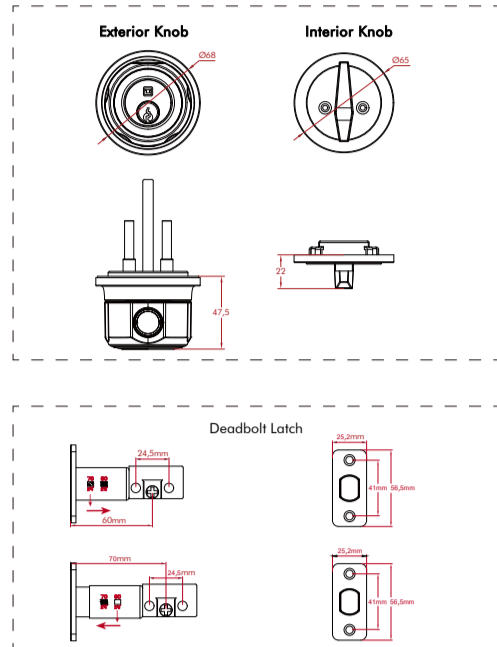
GeekTale bids you welcome to a world of smart home devices, smart locks, and smart surveillance. We at **GeekTale** strive to explore and develop the smart home industry for the good of all. We use cutting-edge technologies to develop products fit and ready for the market.

Please visit our website www.geektechnology.com. Before installing, please scan the QR codes to watch our easy step-by-step installation video. If you have questions regarding the installation process, please contact us by mail service_lock@geektechnology.com or by phone 1-844-801-8880.



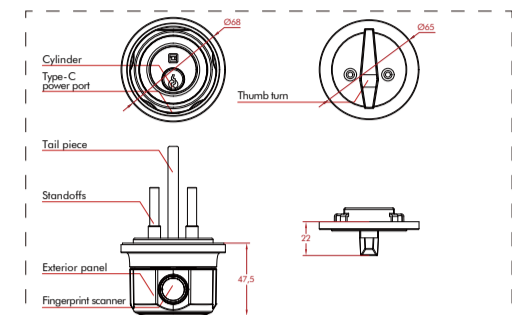
Scan the QR code for more GeekTale Products

PRODUCT DIMENSIONS



2

PRODUCT DESCRIPTION

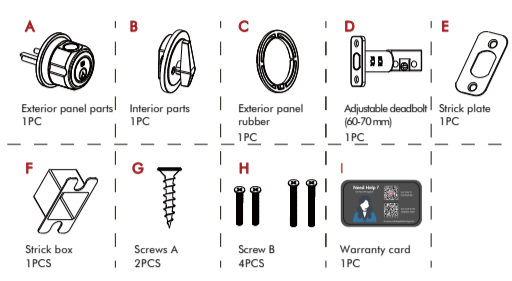


Indicator Light

- 1. Add fingerprint**
Blue light: The fingerprint light turns to blue on to indicate the lock is ready to add fingerprint.
- 2. Fingerprint, mobile phone APP unlock**
Green light: Success (the buzzer beeps once, and the fingerprint light flashes green to indicate).
Red light: Failed (the buzzer beeps twice, the fingerprint light flashes red to indicate).
- 3. Low power**
Green + red light: When the lock is unlocked with fingerprint or mobile APP the buzzer beeps once and fingerprint light flash green and red.

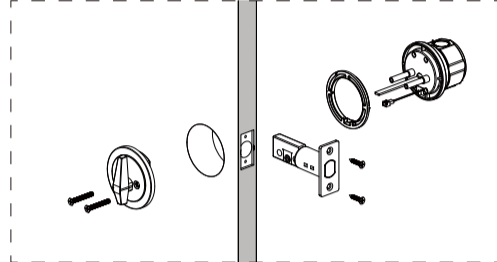
3

INCLUDED IN THE BOX



4

ASSEMBLY DIAGRAM

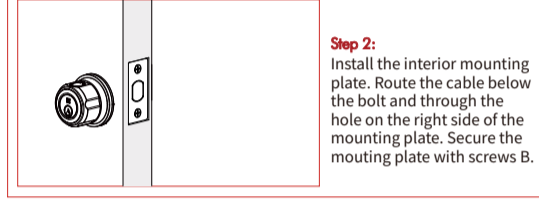
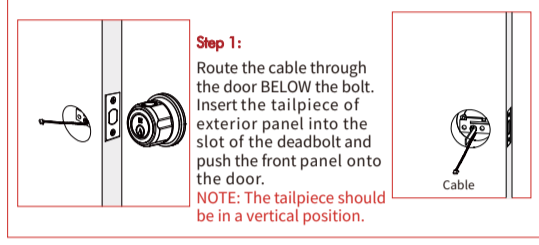


5

CHECK THE DOOR'S DIMENSIONS

- Step 1: Measure to confirm that the door is between 1 7/8" - 2 7/8" (35mm - 54mm) thick.
- Step 2: Measure to confirm that the hole in the door is 2 1/8" (54mm).
- Step 3: Measure to confirm that the backset is either 2 3/8" - 2 7/4" (60.7mm).
- Step 4: Measure to confirm that the hole in the door edge is 1" (25 mm).

Note: If you have a new door, please drill the holes according to Drill Template.

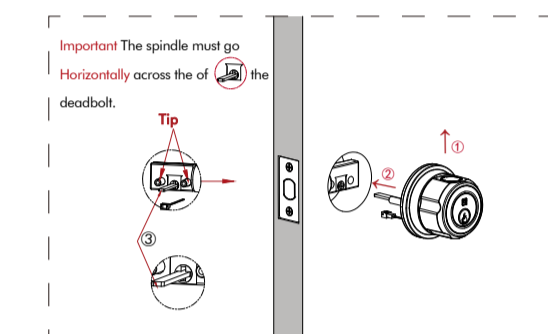


6

HOW TO INSTALL RIGHT HINGE DOOR

Install the Exterior Knob, insert the spindle and the standoffs into the corresponding holes of the deadbolt latch.

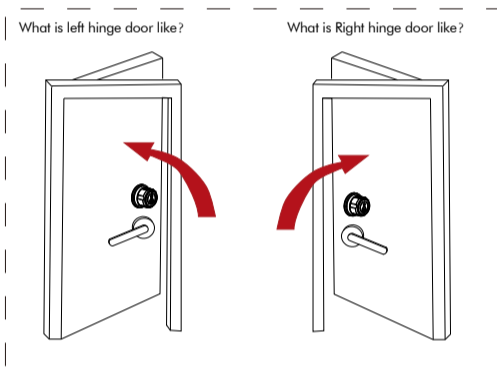
Note: DO NOT CLOSE THE DOOR until the door lock is fully installed.



7

HOW TO LOCK AND UNLOCK

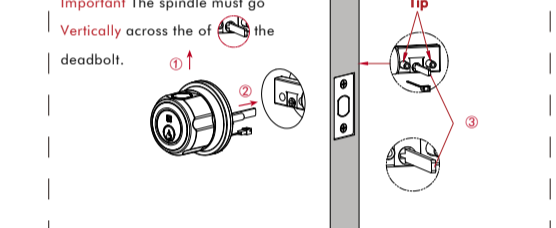
Note: DO NOT CLOSE THE DOOR until the door lock is fully installed.



Keep the deadbolt **unlock** as shown, Install the Exterior panel part(1), Insert the standoffs(2) into the corresponding holes of the deadbolt latch, put the data line through the hole below the deadbolt.

8

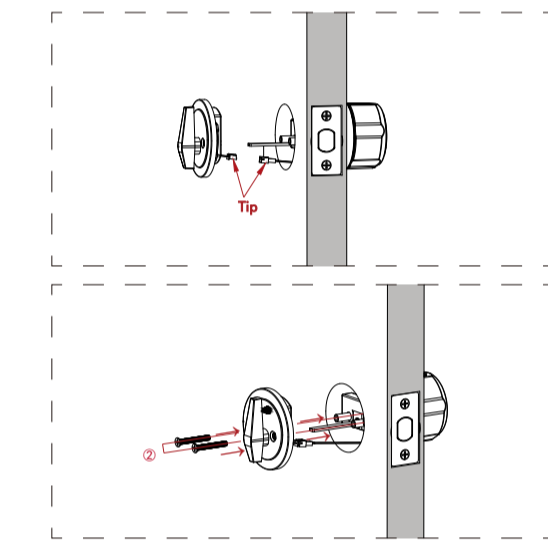
HOW TO INSTALL LEFT HINGE DOOR



Keep the deadbolt **unlock** as shown, Install the Exterior panel part(1), Insert the standoffs(2) into the corresponding holes of the deadbolt latch, put the data line through the hole below the deadbolt.

9

HOW TO CONNET THE DATA LINE AND INSTALL THE INTERIOR PART

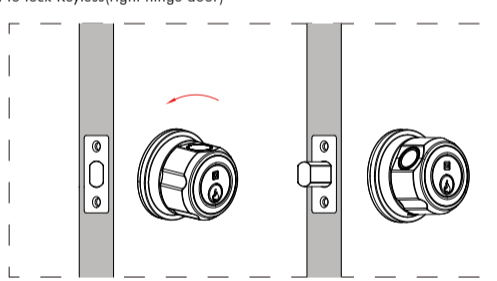


After install the Exterior panel parts currently according left or right, connect the data line as shown, and use the screws B(2) to secure the interior parts.

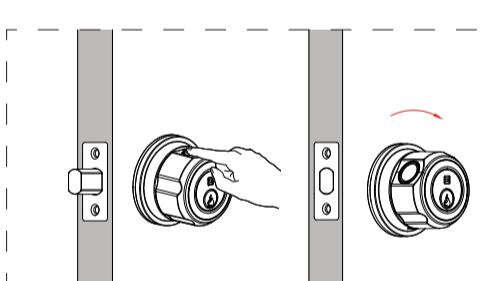
10

HOW TO LOCK AND UNLOCK

Twist to lock Keyless(right hinge door)



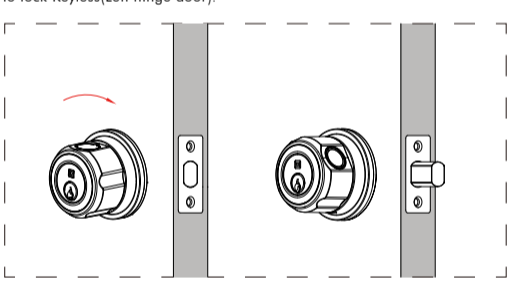
Fingerprint and twist to Unlock(Right hinge door).



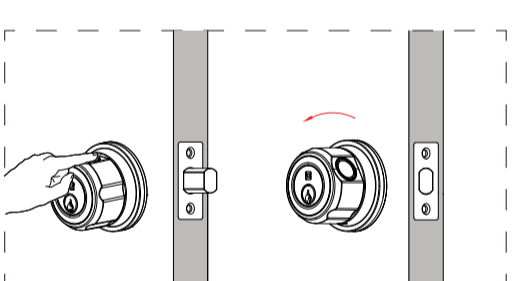
11

HOW TO LOCK AND UNLOCK

Twist to lock Keyless(Left hinge door)



Fingerprint and twist to Unlock(Left hinge door).



12

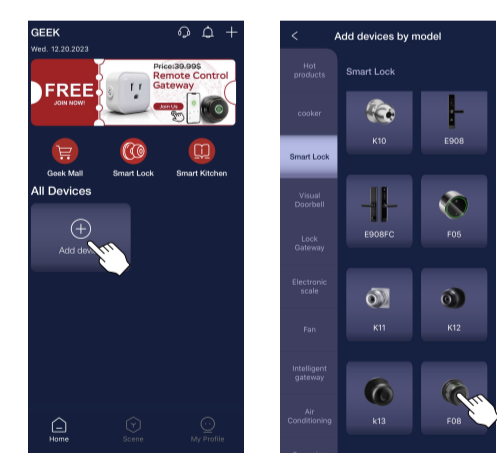
DOWNLOAD THE GEEKSMART APP

- 1. App Download Instructions**
 - Scan the QR code on the right you can use Android and iOS to download the APP.
 - Android version software can be downloaded in the Google Play store. Search "GeekSmart".
 - iOS version of the software can be downloaded in the iPhone App Store. Search "GeekSmart".
- 2. Register and log in with your E-mail address.**



13

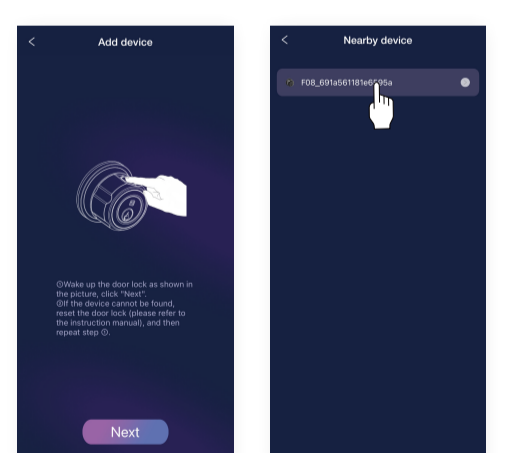
ADDING DEVICE



1. Tap add device button.
2. Continue to follow the instruction on the App interface.

14

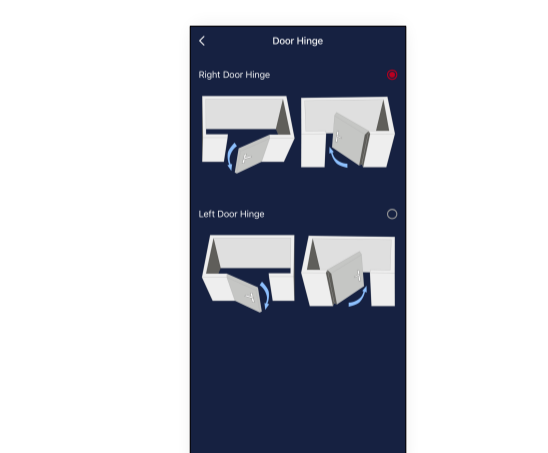
HOW TO ADD FINGERPRINT BY GEEKSMART APP



3. Select your lock.
4. Add complete.

15

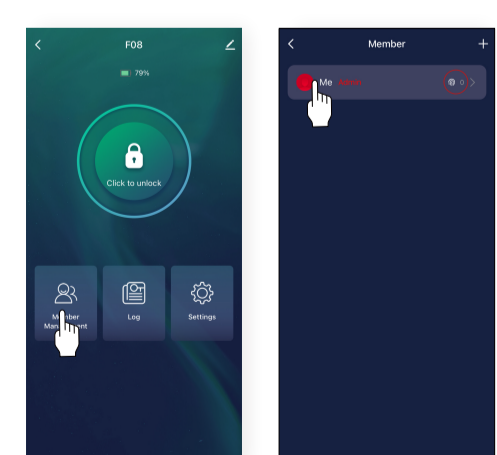
HOW TO SET LEFT HINGE OR RIGHT HINGE



After adding our FOBA into the APP, please set the lock to left or right hinge according to your door.

16

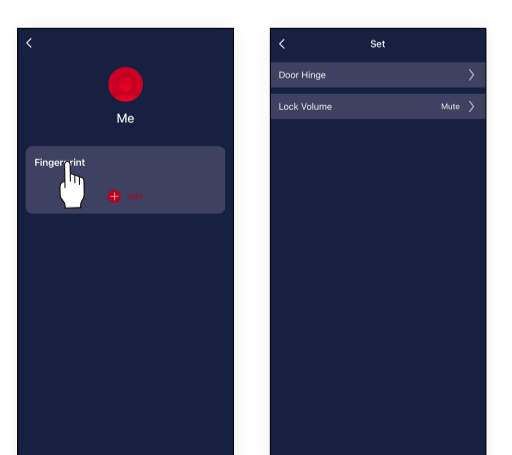
HOW TO ADD FINGERPRINT BY GEEKSMART APP



1. Click member management.
2. Click me.
3. Continue to follow the instruction on the App interface.

17

HOW TO DELETE FINGERPRINT BY GEEKSMART APP



1. Tap the fingerprint you want to delete.
2. Tap delete.

18

TROUBLESHOOTING

- How to reset the FOBA?
A: Please select "restore factory setting" or "Delete device" by **GeekSmart APP**.
- Turn the interior parts thumb turn to the left and return to the middle position 5 times if your door is left hinge.
Turn the interior parts thumb turn to the right and return to the middle position 5 times if your door is right hinge.
- Does FOBA work with third-party accessories such as single lock?
A: It is recommended to use the original accessories for best performance and stability.
- What notification will I receive when the battery is low?
A: After the fingerprint and mobile APP are successfully unlocked the buzzer beeps once, the fingerprint reader flashes green and then flashes red.
- When you unlock the device through the mobile APP, you will receive a push notification message with low battery warning.
- The remaining power can provide about 50 times to unlock.
Please use the power bank to charge in time.
- How can I unlock FOBA if battery runs out?
A: Turn the key 90° to unlock the door.
A: Connect a power bank to the Exterior panel parts with type-C cable as to activate for emergency access.

Important Note: Please keep at least one key in secure location elsewhere as an extra precaution.

19

HOW TO ADD FINGERPRINT BY GEEKSMART APP

- If order 3 locks will anyone also have the same keys?
A: Each set of locks is keyed differently.
- Accidentally deleted the lock from the app, what should I do?
A: 1. You delete the lock in the app, but the lock is not deleted.
Please RESET the lock.
2. Add again on the GeekSmart APP.
- My bluetooth won't connect, what should I do?
A: 1. Upgrade to the latest version of the firmware, authorize Bluetooth in the phone settings to allow access to the Geek Smart App.
2. Try to connect again.
3. If the connection is still not smooth, please contact our after-sale service.
- What is the difference between administrator/user?
A: The first user to add the knob by GeekSmart APP member is administrator, other members are users.
A: Administrator fingerprint can unlock even in the security mode, but user cannot unlock in the security mode. You can enable or disable in the APP.
- How to charge FOBA?
A: There is a TYPE-C power port below Exterior panel, connect a power bank with type-C cable for charging, usually it takes 30 minutes to charge from 0% to 100%, we suggest you choose power bank with line to hook around the FOBA to charge.



20

SPECIFICATIONS

Technical Parameters		
No.	Name	Parameter Description
1	USB	Type-C/ 5V2A
2	Fingerprints max	20
3	Low power warning	3.5V±0.2
4	Voltage range	3.4V-4.2V
5	Stand-by current	<100uA
6	Operating Current	<500mA
7	Unlock time	≈1.5 sec
8	Range of working Temperature	23--131F
9	Door thickness	1 7/8"-2 7/8" (35-54mm)
10	Material	Aluminum alloy+Stainless Steel
11	Power	Lithium battery

21

FCC WARNING

Any changes or modifications not expressly approved by the party responsible for compliance could void the user's authority to operate the equipment.

This equipment has been tested and found to comply with the limits for a Class B digital device, pursuant to part 15 of the FCC Rules. These limits are designed to provide reasonable protection against harmful interference in a residential installation. This equipment generates uses and can radiate radio frequency energy and, if not installed and used in accordance with the instructions, may cause harmful interference to radio communications. However, there is no guarantee that interference will not occur in a particular installation. If this equipment does cause harmful interference to radio or television reception, which can be determined by turning the equipment off and on, the user is encouraged to try to correct the interference by one or more of the following measures:
- Reorient or relocate the receiving antenna.
- Increase the separation between the equipment and receiver.
- Connect the equipment into an outlet on a circuit different from that to which the receiver is connected.
- Consult the dealer or an experienced radio/TV technician for help.

This device complies with part 15 of the FCC Rules. Operation is subject to the following two conditions: (1) This device may not cause harmful interference, and (2) this device must accept any interference received, including interference that may cause undesired operation.

22