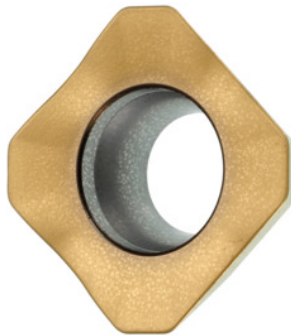


Garant
Indexable insert for milling SEET 1204 AFTN, for face mills, HB7635

Order data

Order number	214243 INOX
GTIN	4062406104481
Item class	21A

Description
Note:

Standard application values for $a_e = 0.5 \dots 1 \times D$ / $a_{p_{max}} = 3.5$ mm.

Technical description

Type	INOX
Feed f_z per tooth	0.19 mm
Insert thickness E	4.76 mm
ISO code indexable insert	SEET 1204 AFTN
Type	HB7635
Tool material	Carbide
Number of changes/inserts	4
Type of product	Indexable insert for milling

User data

	Suitability	V_c	ISO code
Steel < 500 N/mm ²	suitable only under restricted conditions	215 m/min	P
Steel < 750 N/mm ²	suitable only under restricted conditions	205 m/min	P
Steel < 900 N/mm ²	suitable only under restricted conditions	200 m/min	P
INOX < 900 N/mm ²	suitable	90 m/min	M
INOX > 900 N/mm ²	suitable	80 m/min	M
Ti > 850 N/mm ²	suitable	40 m/min	S
wet maximum	suitable		
dry	suitable only under restricted conditions		