

Hubs and bulkhead fittings

Offset reducers and capoffs

Offset reducers

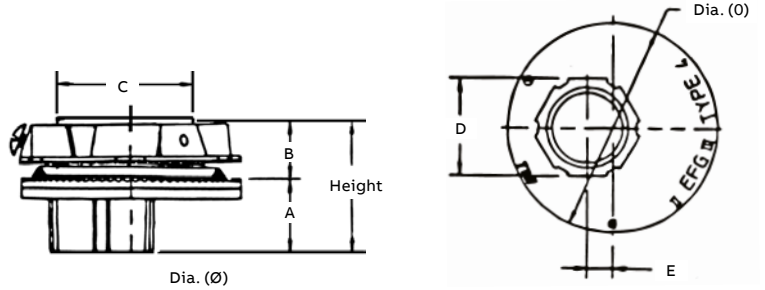


Cat. no.	Trade size (in.)	Height	Dia. (Ø)	Dimensions (in.)				
				A	B	C	D	E
H150-TB075ORGR	1½-¾	1 ²¹ / ₃₂	2¾	1 ⁵ / ₁₆	2 ³ / ₃₂	1 ²⁹ / ₃₂	1 ⁹ / ₃₂	1 ¹¹ / ₃₂
H150-TB100ORGR	1 ⁹ / ₃₂ -1	1 ²⁵ / ₃₂	2¾	1¼	2 ³ / ₃₂	1 ²⁹ / ₃₂	1 ⁹ / ₁₆	7 ⁷ / ₃₂
H150-TB125ORGR	1 ⁹ / ₃₂ -1¼	1 ²⁵ / ₃₂	2¾	1¼	2 ³ / ₃₂	1 ²⁹ / ₃₂	1 ⁷ / ₈	1 ¹ / ₃₂
H250-TB200ORGR	2½-2	2 ¹ / ₈	3¾	1¼	1 ⁵ / ₁₆	2 ²⁹ / ₃₂	2 ²¹ / ₃₂	3 ³ / ₃₂

Material – Offset reducer and locknut: Zinc or copper-free aluminum
 Insulating throat: Thermoplastic temp. rating – 105 °C
 Flammability rating – 94V-0
 Nitrile (BUNA “N”)
 Sealing ring:

For aluminum offset reducer, add suffix A.
 For chrome-plated offset reducer, add suffix CP.
 Meets NEMA sealing requirements for NEMA 3R, 4 and 13 enclosures.
 CSA certified for hazardous locations Class II Groups E,F,G. Class III.
 UL File No. E-3060
 CSA File No. 4484

Diagrams



Capoffs



Cat. no.	Trade size (in.)	Height	Diameter	Dimensions (in.)		
				A	B	C
H050CAP	½	1 ¹³ / ₃₂	1 ⁷ / ₁₆	1 ⁹ / ₃₂	2 ⁷ / ₃₂	¾
H075CAP	¾	1 ¹⁵ / ₃₂	1 ¹¹ / ₁₆	1 ⁹ / ₃₂	1 ¹ / ₁₆	¾
H100CAP	1	1 ¹¹ / ₁₆	2	1 ¹ / ₁₆	1 ³ / ₁₆	¾
H125CAP	1¼	1 ²⁵ / ₃₂	2 ³ / ₈	2 ³ / ₃₂	1 ²¹ / ₃₂	¾
H150CAP	1½	1 ¹³ / ₁₆	2¾	2 ³ / ₃₂	1 ²⁹ / ₃₂	¾
H200CAP	2	1 ²⁷ / ₃₂	3¼	2 ³ / ₃₂	2 ³ / ₈	¾
H250CAP	2½	2 ⁹ / ₃₂	3¾	7 ⁷ / ₈	2 ²⁹ / ₃₂	¾
H300CAP	3	2 ⁹ / ₁₆	4 ³ / ₈	7 ⁷ / ₈	3 ¹ / ₃₂	1 ¹¹ / ₃₂
H350CAP	3½	2 ⁹ / ₁₆	5	2 ⁹ / ₃₂	4 ¹ / ₃₂	1 ¹¹ / ₃₂
H400CAP	4	2 ⁹ / ₁₆	5½	2 ⁹ / ₃₂	4 ¹ / ₂	1 ¹¹ / ₃₂
H500CAP	5	2 ²³ / ₃₂	6 ⁵ / ₈	2 ⁹ / ₃₂	5 ⁹ / ₁₆	1 ¹¹ / ₃₂
H600CAP	6	3	7 ⁵ / ₈	3 ¹ / ₃₂	6 ⁵ / ₈	1 ¹¹ / ₃₂

Material – Capoff and locknut: Zinc or copper-free aluminum
 Insulating throat: Thermoplastic temp. rating – 105 °C
 Flammability rating – 94V-0
 Nitrile (BUNA “N”)
 Sealing ring:

For aluminum capoff, add suffix A.
 For chrome-plated capoff, add suffix CP.
 Meets NEMA sealing requirements for NEMA 3R, 4 and 13 enclosures.
 CSA certified for hazardous locations Class II Groups E,F,G. Class III.
 UL File No. E-3060
 CSA File No. 4484

Diagrams

