



ARLO™ Wall Sconce



SKU	Model #
157039	JXL-BD12-WM18W-RGBCW

Beyond LED Technology's ARLO Smart LED Wall Sconce combines cutting-edge technology with sleek design, making it perfect for smart homes, offices, hotel lobbies, and commercial spaces. This model features 18W RGBCW lighting with RGB and tunable white (CW) color options, along with Wi-Fi and Bluetooth connectivity. You can control the lighting via the Tuya app or Google Assistant, allowing for seamless customization and convenience.

Crafted from anti-UV PC material and rated IP65, the ARLO is built to endure both indoor and outdoor environments, making it ideal for entryways, patios, and commercial settings. The smart, energy-efficient features ensure long-lasting performance and versatility in any space.

Product Features

- 18 Watt RGBCW Bluetooth Model
- Adjustable CCT
- Input Voltage 100-277VAC
- Aluminum + PC + Metal Housing
- ETL Listed
- 3-year warranty

ARLO™

Wall Sconce



SKU	WATT	MAX LUMENS	ADJ. CCT	INPUT VOLTAGE	CRI	SIZE	CONSTRUCTION	BLUETOOTH	DIMMING	IP RATING	CERTIFICATIONS
157039	18W	1000	2700K/3K/ 3500K/ 4K/5K	100-277V	>80	12.2" RGBCW	Aluminum +PC	Wifi & Bluetooth	Yes@ 120V	IP65	ETL

SKU: 157039

Specifications

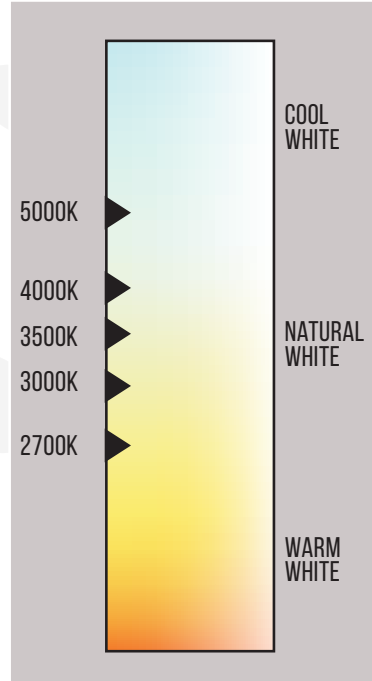
Parameter	Description	Value
General Performance	Model #	JXL-BD12-WM18W-RGBCW
	Watt	18W
	Max Lumens	1000
	Lumen Efficacy	Up to 55LM/W
	Color Temperature	2700K / 3000K / 3500K / 4000K / 5000K
	CRI (Ra)	≥80
	Light Spread	N/A
	Diffuser Type	PC Lens
Electrical	Input Voltage	100-277Vac
	Frequency	50/60Hz
	Dimming	Yes@ 120V
	Power Factor	N/A
	Driver Surge Protection	<1000V
	Flicker Percent	<30%
Physical	Operating Temperature	-20°C to 40°C
	Operating Humidity	10% ~ 40%RH
	Storage Temperature	-20°C to 60°C
	Storage Humidity	10%-90%RH
	LED Brand	San'an
	LED Type	SMD
	LED QTY	72 Pcs
Construction	Aluminium + Steel	
Qualification	Housing Color	Matte Black
	IP Rating	IP65
	Warranty	3 Years

WALL SCONCE

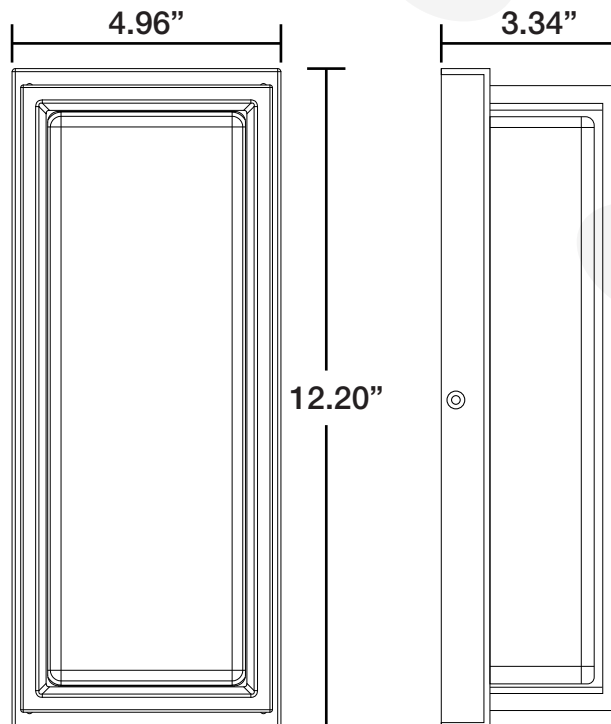


ARLO™ Wall Sconce

Correlated Color Temperature (CCT)



Dimensions



ARLO™

Wall Sconce

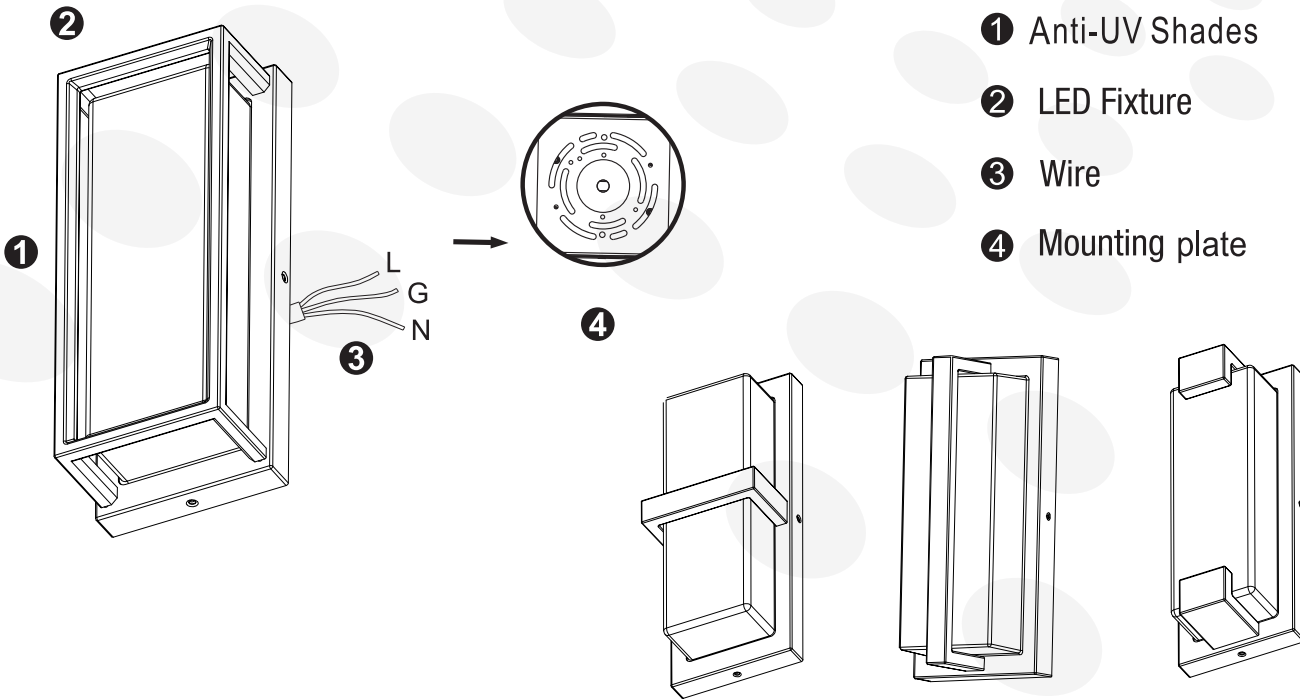


Installation

IMPORTANT: Read all instructions in order to ensure safety and proper installation. DO NOT operate this product under any conditions other than those for which it is specified. Failure to observe these precautions can lead to electrical shock, product failure, or other problems.

PARTS LIST

- ① Anti-UV Shades
- ② LED Fixture
- ③ Wire
- ④ Mounting plate



WALL SCONCE

Specification	Watt	Voltage	Length	Width	Height	Equivalent to
12-Inch LED Wall Light	18Wt	100-130V AC	4.96"	3.46"	12.20"	100W



ARLO™ Wall Sconce

Installation

BLUETOOTH



WIFI



Controlled Via
Tuya Smart APP

Works With
Google Assistant

Works With
Amazon Alexa

1. Download the "Tuya Smart" or " Smart Life" from Apple Store or Google Store, register an account and log in.
2. Turn on Bluetooth or Wifi on your phone
3. Open the APP to connect the light, Click "+" in the upper right corner— Lighting — Lighting Source (BLE).
4. Switch ON/Off the light for 3 times continuously. If light flashes, you can find it on APP and connect it. If failed, please try again above steps.
5. Within 30 seconds, it will be connected. Start to enjoy the scene.

WARRANTY

This product is free from defects in materials and workmanship for a period of 3 years from the day of purchase from the day of purchase. If the product has been misused, damaged by accident or in any other way of improper use, this warranty becomes void.

PACKAGE CONTENT

- 12-Inch Wall Lamp x 1
- Wire Connectors x 3
- Screws x 4
- Mounting plate x 1

Installation Guide

WARNING

Turn power OFF from electrical panel before installation or maintenance.

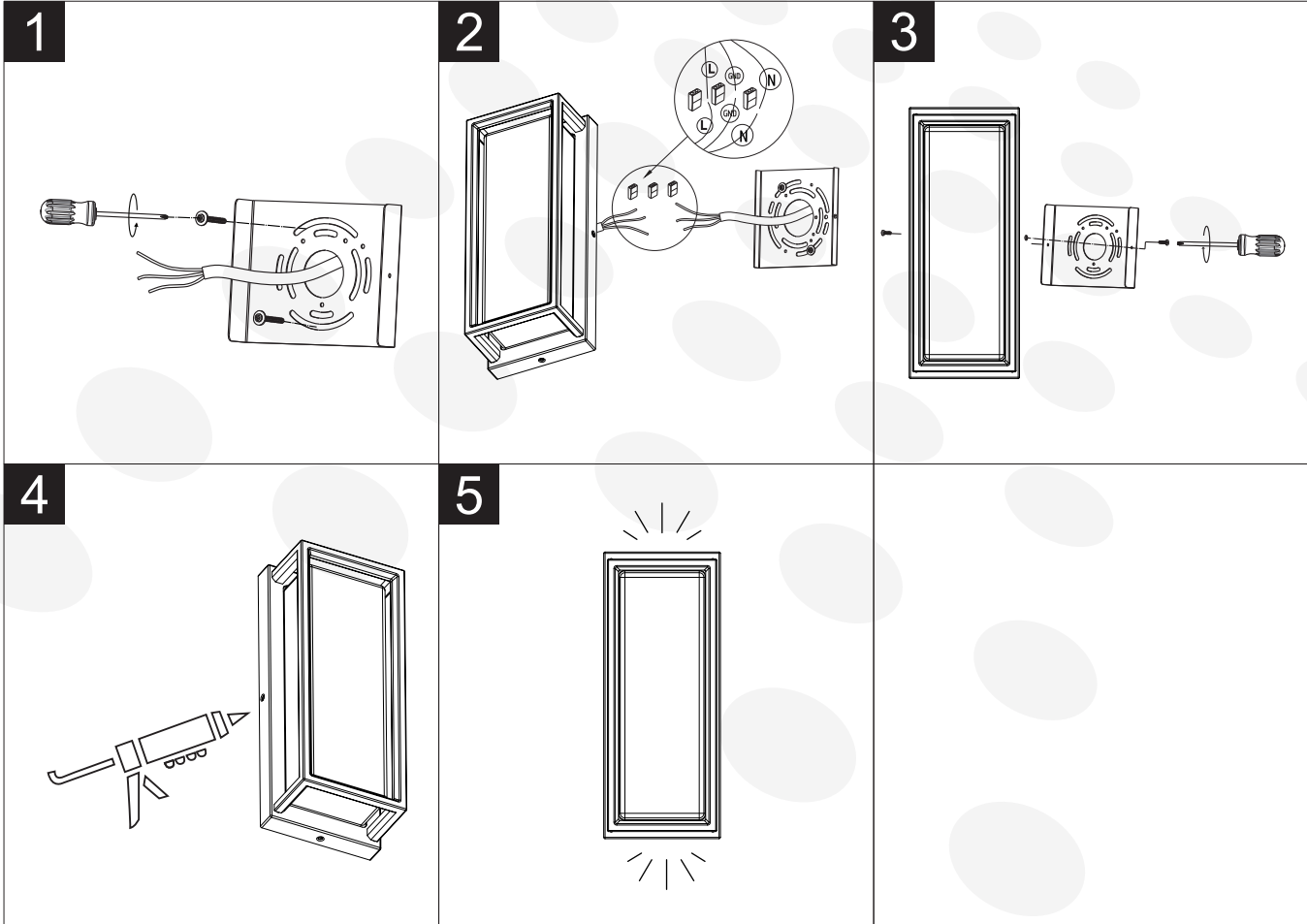
1. Attached the mounting bracket to the J-box /wall by 2 screws
2. Use push in wire connectors to connect the wires
3. Fix the light fixture to the mounting bracket by 2 screws on the side
4. With silicone caulking compound, caulk completely around where the mounting bracket meets the wall surface
(CAUTION: Be sure to caulk completely where the mounting bracket meets the wall surface to prevent water from seeping into mounting bracket)
5. Installation is done

ARLO™

Wall Sconce



Installation



WALL SCONCE

Packaging

SKU	Box Dimension	Qty	Net Weight	Gross Weight
157039	24.01" x 12.83" x 14.01"	10 Pcs/Box		



ARLO™

Wall Sconce

Application Picture



Warranty

This product is covered under a 3-year warranty. For complete warranty details, [Click Here.](#)