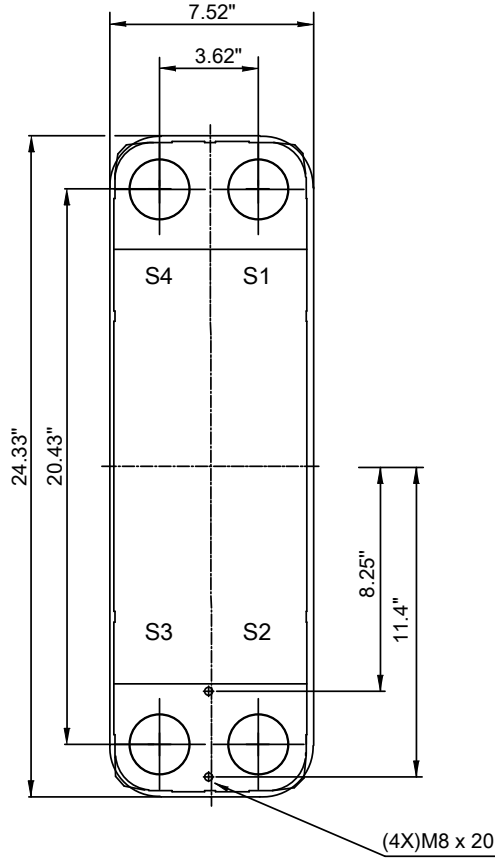
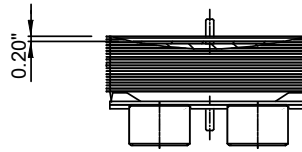
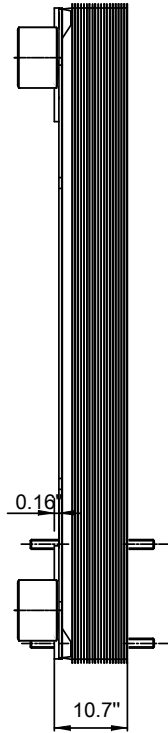
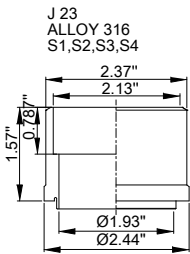


Note that all unique customer requirements (i.e tolerance) need to be verified thru Alfa Laval.



T1 T2 T3 T4 locations on back side correspond to S1 S2 S3 S4 on front side

HEATING SURFACE null ft²
 NETWEIGHT 114.6 lb
 OPERATING WEIGHT Error lb
 PLATE MATERIAL ALLOY 316
 PLATE GROUPING 1*44H/1*45H

ALL DIMENSIONS IN INCHES

SIDE	MEDIA	INLET	TEMP.	OUTLET	TEMP.	FLOW RATE	PRESSURE DROP	LIQUID VOL.
1	Water	S1	33.8 °F	S2	32.0 °F	0 lb/h	null psi	0.40 ft ³
2	Water	S3	30.2 °F	S4	32.0 °F	0 lb/h	null psi	0.39 ft ³

PRESSURE VESSEL APPROVAL

UL/CRN

AlfaNova HP 76-90H (3287000922)

www.alfalaval.com

CUSTOMER NAME / REF. NO.

TOTAL LENGTH 12.1 in
 TOTAL WIDTH 7.5 in
 TOTAL HEIGHT 24.3 in

COMPANY / REF.
 Alfa Laval Nordic AB

7/7/2017
 REV 0