

# Product data sheet

## Characteristics

# QO130M200PC

Load center, QO, 1 phase, 30 spaces, 30 circuits, 200A convertible main breaker, PoN, NEMA1, combo cover, UL



### Main

Marketing Trade Name	QO
Product Type	Load Center
Cover Type	Combination flush/surface cover

### Complementary

Tightening Torque	Cover 20 lb.in
Load Center Type	Main breaker
Rated Current	200 A
Number of Spaces	30
Max Short Circuit Current Rating	22 kA
Maximum Number of Single Pole Circuits	40
Maximum Number of Tandem Breakers	10
Number of Phases	1 phase
Wire Size	AWG 4...250 kcmil aluminium/copper
Ground Bar	Grounding bar (ordered separately)
Electrical Connection	Lugs
Wiring Configuration	3-wire
Busbar Material	Tin plated copper busbar
Enclosure Material	Welded sheet steel
Surface Finish	Baked enamel Gray
Box Number	9
Height	29.84 in (758 mm)
Width	14.25 in (362 mm)

### Environment

Enclosure Rating	NEMA 1 indoor
Ambient Air Temperature for Operation	23 °F (-5 °C) 104 °F (40 °C)
Product Certifications	UL Listed

### Ordering and shipping details

Category	10001 - QO PON 1PH LC,12-60 CKT, MB N1
Discount Schedule	DE3A
GTIN	00785901960188
Nbr. of units in pkg.	1
Package weight(Lbs)	29.4 lb(US) (13.34 kg)
Returnability	Yes
Country of origin	US

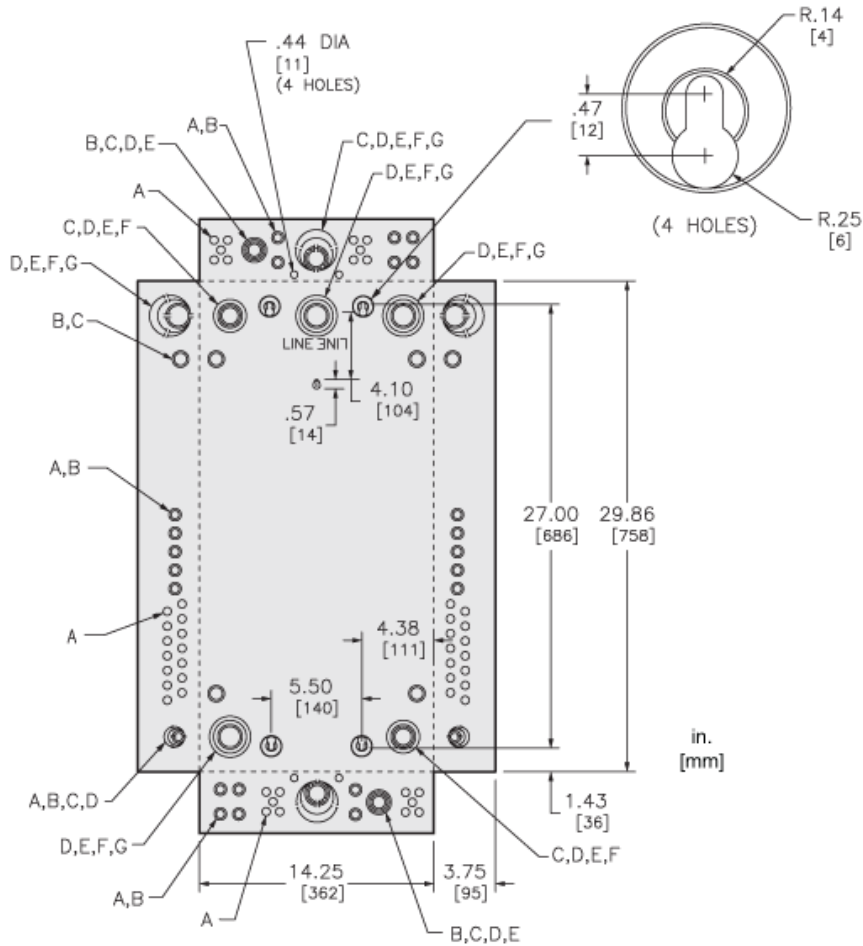
## Packing Units

Unit Type of Package 1	PCE
Package 1 Height	5.00 in (12.7 cm)
Package 1 width	16.30 in (41.402 cm)
Package 1 Length	32.40 in (82.296 cm)
Unit Type of Package 2	PAL
Number of Units in Package 2	18
Package 2 Weight	547.00 lb(US) (248.115 kg)
Package 2 Height	38.50 in (97.79 cm)
Package 2 width	40.00 in (101.6 cm)
Package 2 Length	48.00 in (121.92 cm)

## Offer Sustainability

California proposition 65	WARNING: This product can expose you to chemicals including: Lead and lead compounds, which is known to the State of California to cause cancer and birth defects or other reproductive harm. For more information go to <a href="http://www.P65Warnings.ca.gov">www.P65Warnings.ca.gov</a>
REACH Regulation	<a href="#">REACH Declaration</a>
REACH free of SVHC	Yes
EU RoHS Directive	Compliant <a href="#">EU RoHS Declaration</a>
Toxic heavy metal free	Yes
Mercury free	Yes
RoHS exemption information	<a href="#">Yes</a>
China RoHS Regulation	<a href="#">China RoHS Declaration</a>

Approximate Dimensions



KNOCKOUTS							
SYMBOL	A	B	C	D	E	F	G
IN	.50	.75	1.00	1.25	1.50	2.00	2.50
MM	13	19	25	32	38	51	64

## Connections and Wiring Diagrams

