

HT-05-1818A INSTRUCTION MANUAL

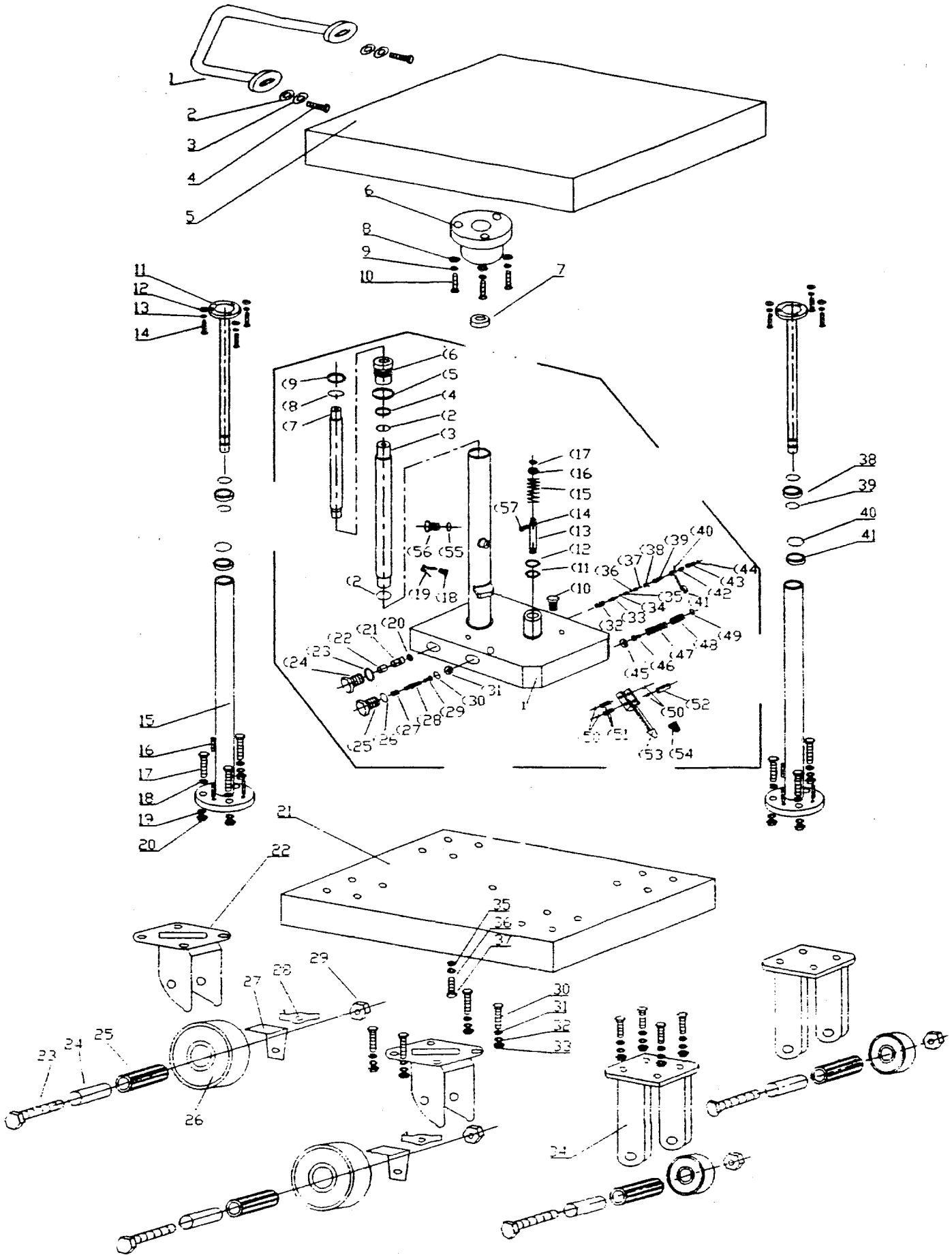
BASIC DATA:

MODEL	CAPACITY	LOWERED HEIGHT	RAISED HEIGHT	TABLE DIMENSIONS	NET WEIGHT
HT-05-1818A	500LBS.	31"	49"	18" X 18	104LBS.

ASSEMBLY INSTRUCTIONS:

1. Put the frame (#21) on the ground. Bolts (#30), washers (#31) & lock nuts (#33) on two castors under the frame cross to each other are not tighten, please take all the bolts, & nuts from these two casters. Install outer guide posts (#15) on the caster bolt holes on the frame, and secure the outer guide posts, and casters with bolt (#30), flat washer (#31) & lock nut (#33).
2. Install hydraulic cylinder on the frame, and secure it with big washer (#35), spring washer (#36) and M12 bolt (#37).
3. Remove solid plug on top end of the cylinder and replace it with bleeder (vent) plug to allow air to be bled from the hydraulic system.
4. Lift up the cylinder to ½" height, join the cylinder joint block (#6) to the lift piston (#7), and secure it with nut (#7).
5. Use spanner to tighten nut (#7) under the table.
6. Install inner guide posts (#11) and secure them with bolts (#14), spring washer (#13), & flat washer (#12).
7. Install push/pull handle (#1) on front side of the table (#5), and secure it with bolts (#4), spring washer (#3) and flat washer (#2).
8. Adjust the verticality of inner guide post (#11) and outer guide post (#15) with the help of M8 bolt (#16).
- 9. Now tighten all bolts & nuts.**
10. Check all the parts, and then test this lift table with weight and without weight.

HT-05 Post Hydraulic Table



HT-05 Post Hydraulic Table

No.	Description	Q'ty	No.	Description	Q'ty	No.	Description	Q'ty
1	Handle	1	34	Fixed Wheel Holder	2	(25)	Set Screw	1
2	Flat Washer	2	35	Big Washer	1	(26)	O-ring ϕ 16 \times 2.4	1
3	Spring Washer	2	36	Spring Washer	1	(27)	Spring	1
4	Hex Cap Bolt M8 \times 20	2	37	Hex Cap Bolt	1	(28)	Valve Core	1
5	Table	1	38	Separate Cover (1)	2	(29)	Valve Cover	1
6	Cylinder Joint Bolck	1	39	Steel Wire C-ring	4	(30)	O-ring ϕ 10 \times 1.9	1
7	Round Nut	1	40	Steel Wire C-ring	2	(31)	Steel Ball ϕ 7	1
8	Flat Washer ϕ 8	3	41	Separate Cover (2)	2	(32)	Spring	1
9	Spring Washer ϕ 8	3				(33)	Push Rod	1
10	Hex Cap Bolt M8 \times 20	3	(1)	Valve	1	(34)	O-ring ϕ 15 \times 2.4	1
11	Inter Guide Post	2	(2)	O-ring 32.5 \times 1.8	2	(35)	Push Rod Cover	1
12	Flat Washer	6	(3)	Inter Cylinder	1	(36)	Guide Cover	1
13	Spring Washer	6	(4)	Dust Cover DH28	1	(37)	Pin	1
14	Hex Cap Bolt M8 \times 20	6	(5)	O-ring 56 \times 3.5	1	(38)	Spring	1
15	Outer Guide Post	2	(6)	Cylinder Cover	1	(39)	Link Rod	1
16	Set Bolt M8 \times 10	6	(7)	Lift Piston	1	(40)	M6 Bolt	1
17	Hex Cap Bolt M8 \times 35	6	(8)	O-ring 34 \times 3.5	1	(41)	Slice	1
18	Flat Washer	6	(9)	Dust Cover DH28	1	(42)	Bushing	1
19	Spring Washer	6	(10)	Hex Cap Bolt	1	(43)	Bolt	1
20	Hex Cap Nut	6	(11)	Oil Seal UHS31.5	1	(44)	Nut	1
21	Frame	1	(12)	Dust Cover DH31.5	1	(45)	Steel Ball ϕ 7	1
22	Swivel Wheel Holder	2	(13)	Pump Piston	1	(46)	Spring Seat	1
23	Hex Cap Bolt	4	(14)	Compose Washer ϕ 4	1	(47)	Spring	1
24	Bushing	4	(15)	Spring	1	(48)	Set Screw	1
25	Bearing	4	(16)	Spring Seat	1	(49)	O-ring 10 \times 1.9	1
26	Wheel	4	(17)	C-ring ϕ 15	1	(50)	C-ring	4
27	Brake Slice	2	(18)	Screw M6	1	(51)	Shaft	2
28	Brake Foot Pedal	2	(19)	Slice	1	(52)	Press Wheel	1
29	Set Nut	4	(20)	O-ring 9 \times 1.8	1	(53)	Foot Pedal	1
30	Hex Cap Bolt	16	(21)	Lowering Valve		(54)	Rubber Cover	1
31	Flat Washer	16	(22)	Washer ϕ 12 \times 8		(55)	O-ring 10 \times 1.9	1
32	Spring Washer	16	(23)	Washer ϕ 14		(56)	Air Breather M10 \times 1	1
33	Hex Cap Nut	16	(24)	Screw Plug M14 \times 1		(57)	Hex Cap Plug M4	1