



VESTIL MANUFACTURING CORP.

2999 North Wayne Street, P.O. Box 507, Angola, IN 46703

Telephone: (260) 665-7586 -or- Toll Free (800) 348-0868

Fax: (260) 665-1339

www.vestil.com e-mail: sales@vestil.com

P-HOP-Series Portable Steel Hoppers



Receiving Instructions

After delivery, remove the packaging from the product. Inspect the product closely to determine whether it sustained damage during transport. If damage is discovered, record a complete description of it on the bill of lading. If the product is undamaged, discard the packaging.

NOTE: The end-user is solely responsible for confirming that product design, use, and maintenance comply with laws, regulations, codes, and mandatory standards applied where the product is used.

Technical Service & Replacement Parts

For answers to questions not addressed in these instructions and to order replacement parts, labels, and accessories, call our Technical Service and Parts Department at (260) 665-7586. The Department can also be contacted online at <https://www.vestil.com/page-parts-request.php>.

Electronic Copies of Instruction Manuals

Additional copies of this instruction manual may be downloaded from <https://www.vestil.com/page-manuals.php>.

Table of Contents		Page
Specifications.....		2
Signal Words.....		2
Safety Instructions.....		3
Caster Installation.....		3
FIGS. 1-4: Exploded Views and Bills of Materials.....		4, 5, 6, 7
National Standards.....		8
Loading & Dumping a Hopper.....		8 - 9
Caster Brake.....		9
Record of Satisfactory Condition.....		9
Inspections & Maintenance.....		9 - 10
Labeling Diagram.....		11
Limited Warranty.....		12

SPECIFICATIONS

Documents that provide specifications for P-HOP series hoppers are available online to anyone who visits Vestil's website. Specifications include dimensions, net weight, and capacity information. To access the appropriate specifications document, navigate to this webpage: <https://www.vestil.com/product.php?FID=450>. Click the *Product Specifications Table* tab. Scroll the page to the entry for the model you purchased, and click the button in the *PDF* column that looks like a pencil inside a box. A PDF file will open. This file is the specifications document for your dock leveler. Print a copy of the document and keep it with your copy of this manual. The following is an exemplar specifications document for model P-HOP-0.5.

PORTABLE STEEL HOPPER - P-HOP-0.5

APPROX WEIGHT: 295.72 lbs.
DOES NOT INCLUDE WEIGHT OF POWER OR PACKAGING!!!

*** ANY ADDITIONS, DELETIONS, OR OMISSIONS MUST BE CORRECTED ON THIS DRAWING AS THIS DRAWING WILL BE CONSIDERED ALL INCLUSIVE ***
ALL GRAPHICS PROVIDED ARE FOR REFERENCE ONLY. IF CERTAIN DIMENSIONS ARE CRITICAL PLEASE VERIFY THOSE DIMENSIONS WITH YOUR SALESPERSON

DIMENSION TOLERANCE ± 1/4"

***** UNIT MUST BE SECURED TO THE FORK TRUCK WHEN DUMPING *****

STANDARD FEATURES

MODEL # P-HOP-0.5
CAPACITY: 2,000 LBS.
VOLUME: 1/2 CU. YD.
USABLE WORK ENVELOPE: 34 13/16" X 58 7/16" X 53 7/8"
DUMP ANGLE: 90°
OVERALL WIDTH: 34 13/16"
OVERALL LENGTH: 53 7/8"
OVERALL HEIGHT: 37 3/16"
FORK POCKETS: 7" WIDE X 2" HIGH
CASTERS: 8"X2" (2-SWIVEL 1 W/ LOCK, 2-RIGID)
TOUGH BAKED IN POWDER COATED BLUE FINISH

NEVER EXCEED LOAD CENTER RATING PER FORK TRUCK MANUFACTURER'S GUIDELINES. DO NOT USE THIS FORK TRUCK ATTACHMENT IF LOAD WILL EXCEED FORK TRUCK MANUFACTURER'S LOAD CENTER RATING.
APPROX. WEIGHT/ LOST LOAD=295.72 LBS.
EFFECTIVE THICKNESS= FORK LENGTH MINUS 20 1/4"

SPECIAL FEATURES

NONE

APPROVAL

I, THE UNDERSIGNED, AGREE THAT THE PRODUCT AS REPRESENTED SATISFIES DESIGN AND DIMENSION REQUIREMENTS. I ALSO ACKNOWLEDGE MY DUTY TO CONFIRM PRODUCT AND INSTALLATION COMPLIANCE WITH ALL APPLICABLE FEDERAL, STATE AND LOCAL REGULATIONS AND STANDARDS.

ANY MODIFIED UNITS ARE NON-RETURNABLE

[] As drawn [] As marked

Signed: _____ Date: _____

Printed Name: _____

LEAD TIME WILL START UPON RECEIPT OF SIGNED APPROVAL DRAWING

DISTRIBUTOR'S NAME:		P.O.#
VESTIL MANUFACTURING		W.O.#
DRAWN BY:	DATE:	SALES:
W. STALEY	9/18/08	X
REFERENCE:	SCALE:	FILE NAME:
X	1:15	37-007-003
QUOTED LEAD TIME:	QUOTE #	
X	X	

SIGNAL WORDS

SIGNAL WORDS appear in this manual to draw the reader's attention to important safety-related messages. The following are signal words used in this manual and their definitions.

- DANGER**

Identifies a hazardous situation which, if not avoided, WILL result in **DEATH or SERIOUS INJURY**. Use of this signal word is limited to the most extreme situations.
- WARNING**

Identifies a hazardous situation which, if not avoided, **COULD** result in **DEATH or SERIOUS INJURY**.
- CAUTION**

Indicates a hazardous situation which, if not avoided, **COULD** result in **MINOR or MODERATE** injury.
- NOTICE**

Identifies practices likely to result in product/property damage, such as operation that might damage the product.

SAFETY INSTRUCTIONS

Vestil strives to identify foreseeable hazards associated with the use of its products. However, no manual can address every conceivable risk that could arise. Always apply good judgment while using, inspecting, or maintaining this product.



WARNING

If this product is installed, used, or maintained improperly serious personal injuries or death might result.

- **Read and understand the entire manual before installing, using, or servicing the product.** Keep this manual in a location known to persons who use the product. Read the manual whenever necessary to refresh your understanding of proper use, inspection, and maintenance procedures.
- DO NOT exceed the capacity: 2,000 pounds (909kg). Capacity is provided on your *SPECIFICATIONS* document as well as on label 1153. See [LABELING DIAGRAM](#) on p. 11.
- DO NOT use a malfunctioning or significantly damaged hopper. Examples significant damage include: 1) damage to the hopper release mechanism that allows the hopper to dump; 2) broken fork pocket(s); 3) main connection pin; or 4) broken welds. Inspect the hopper before each use according to the [INSPECTION](#) instructions on p. 9-10. DO NOT use the hopper unless it is in satisfactory condition.
- DO NOT use the hopper if the safety chain is damaged or absent; DO NOT lift the hopper until it is securely connected to the carriage of the fork truck with the safety chain.
- DO NOT fill the hopper with a load weighing more than the maximum rated load (2,000 lb.).
- DO NOT stand beneath or travel under the hopper at any time. DO NOT permit any person to stand beneath or travel under the hopper.
- Hoppers with lifting lugs can be lifted with overhead hoists and cranes. DO NOT lift a hopper unless the chute is securely latched to the frame. The hopper must not be able to rotate while it is suspended.
- DO NOT allow people to ride on or in the hopper.
- DO NOT use the hopper if any label is unreadable, damaged, or missing. Contact Vestil to order replacement labels. See [LABELING DIAGRAM](#) on p. 11.
- ALWAYS apply proper (fork) lift truck operation practices learned during your training program. Before raising the hopper from the floor AND tilt the (forklift) mast toward the cab of the truck to ensure that the hopper will not slide towards the tips of the forks.
- DO NOT modify the hopper in any way! Modification(s) might make the hopper unsafe to use.
- DO NOT dump the hopper UNLESS every person in the vicinity is safely behind the forklift truck.
- DO NOT dump the hopper if the forklift is facing down a slope. Only dump the hopper while parked on a level surface.
- ALWAYS engage the caster brake when the hopper is stationary/not in use.

CASTER INSTALLTION

Each P-HOP series hopper has 2 rigid casters in the front and 2 swiveling casters in back, one of which is equipped with a brake. To install the casters, insert the caster mounting plates into the quick-connect caster brackets. Then, install clevis pins (99-112-006) and secure them in place with extended prong cotter pins (65080).

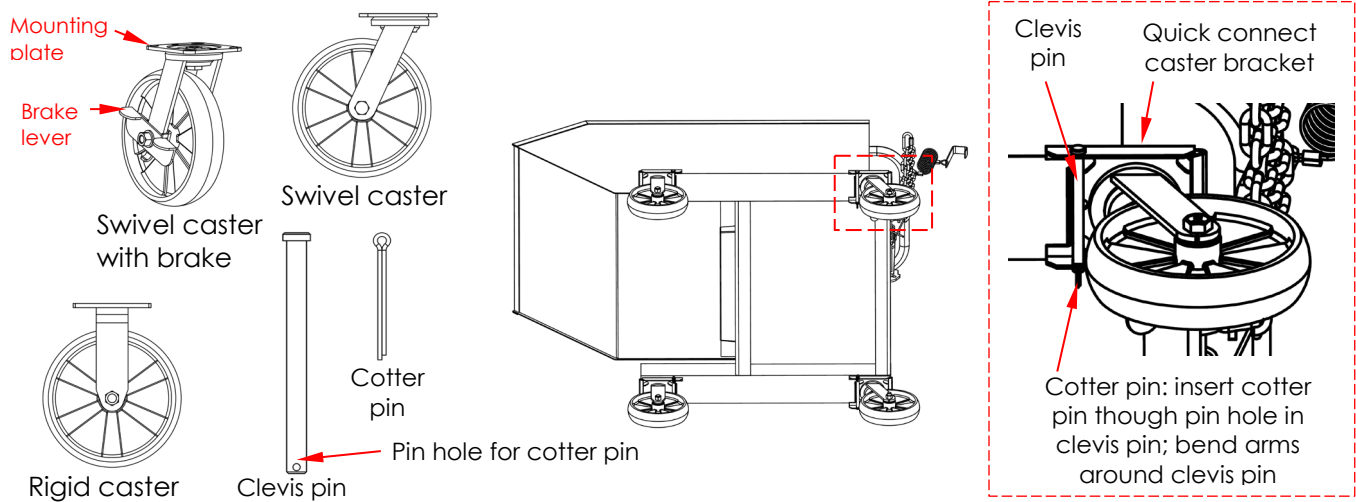
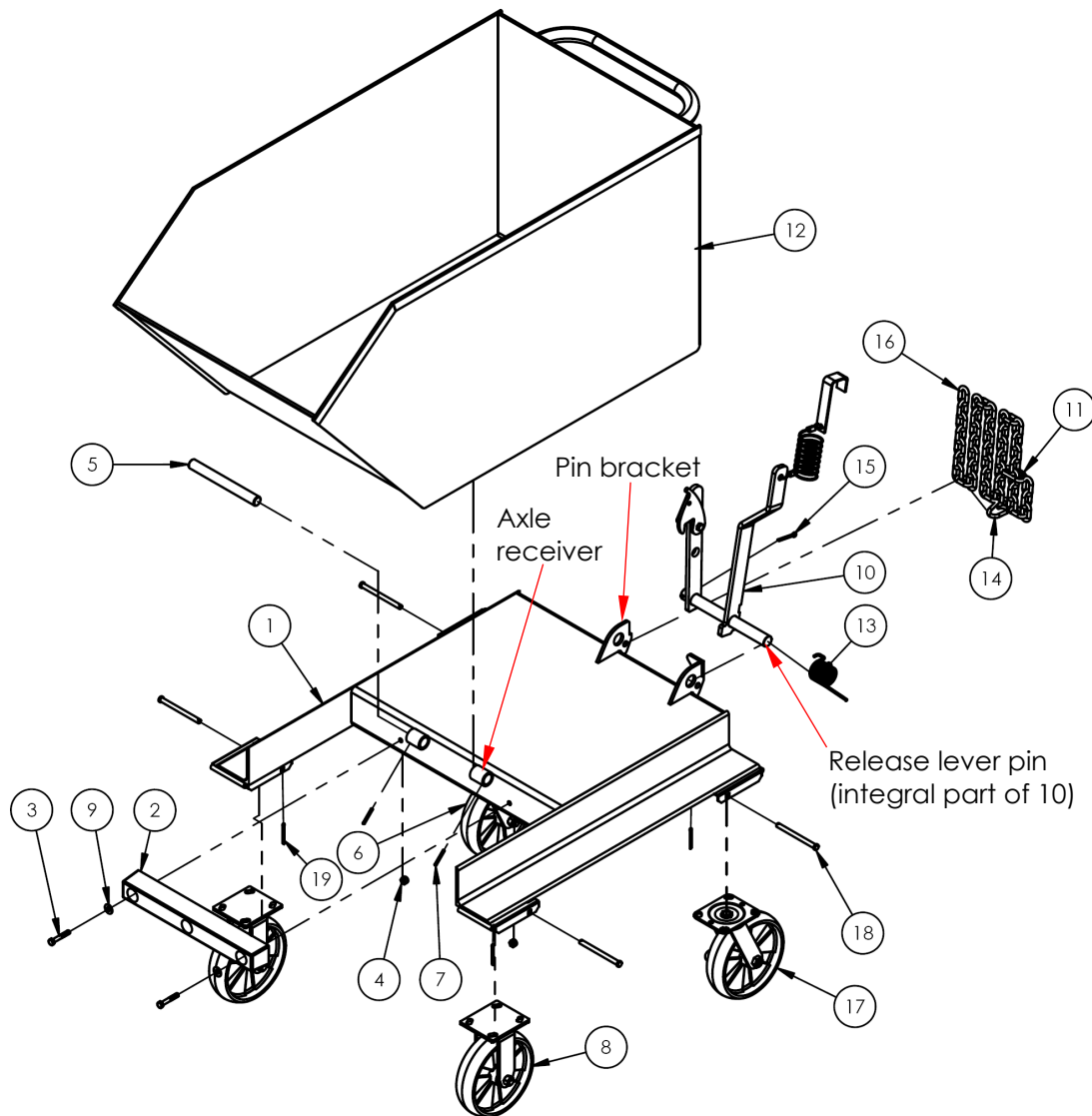
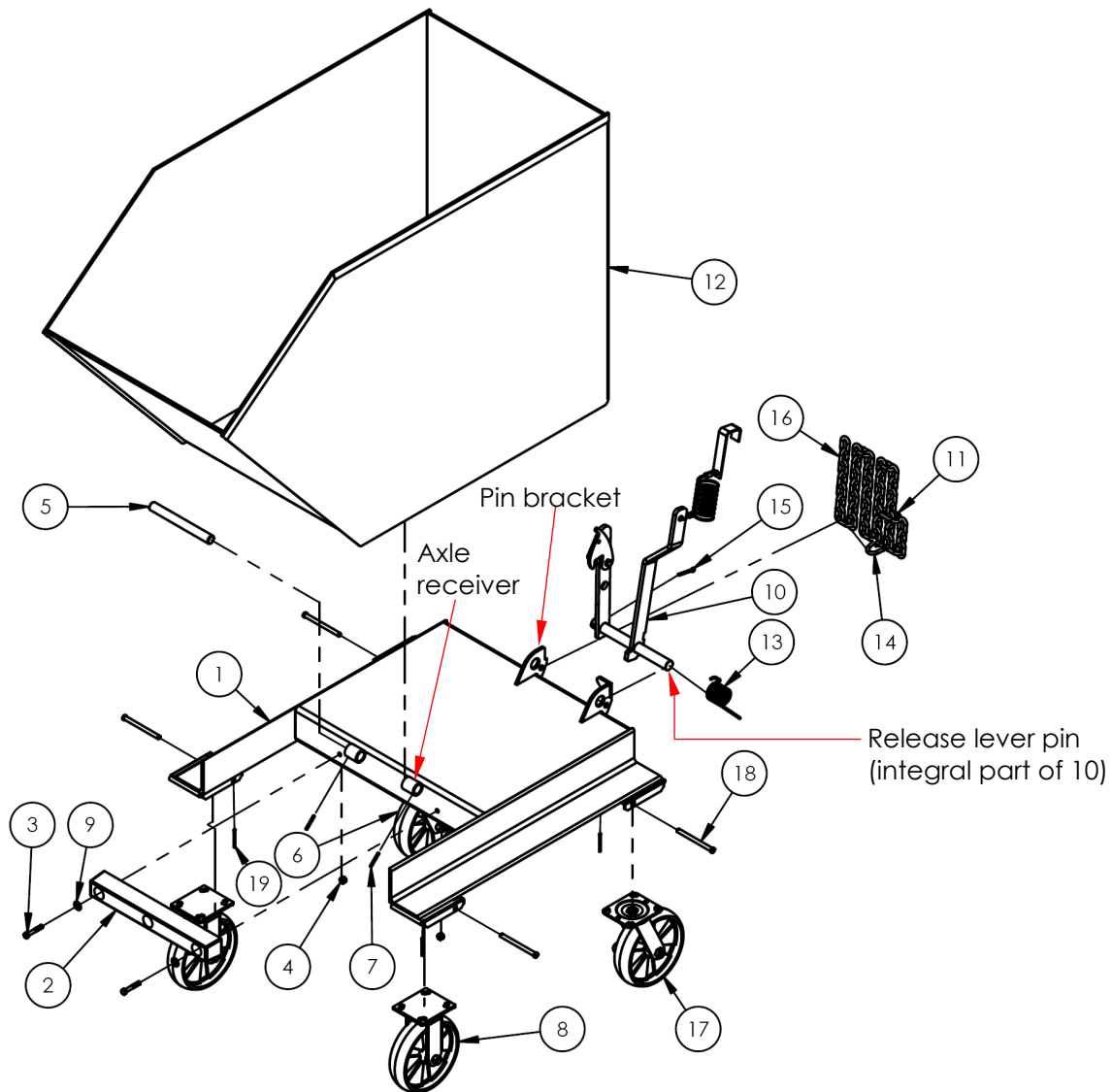


FIG. 1: P-HOP-0.5 EXPLODED VIEW AND BILL OF MATERIALS (37-006-003)



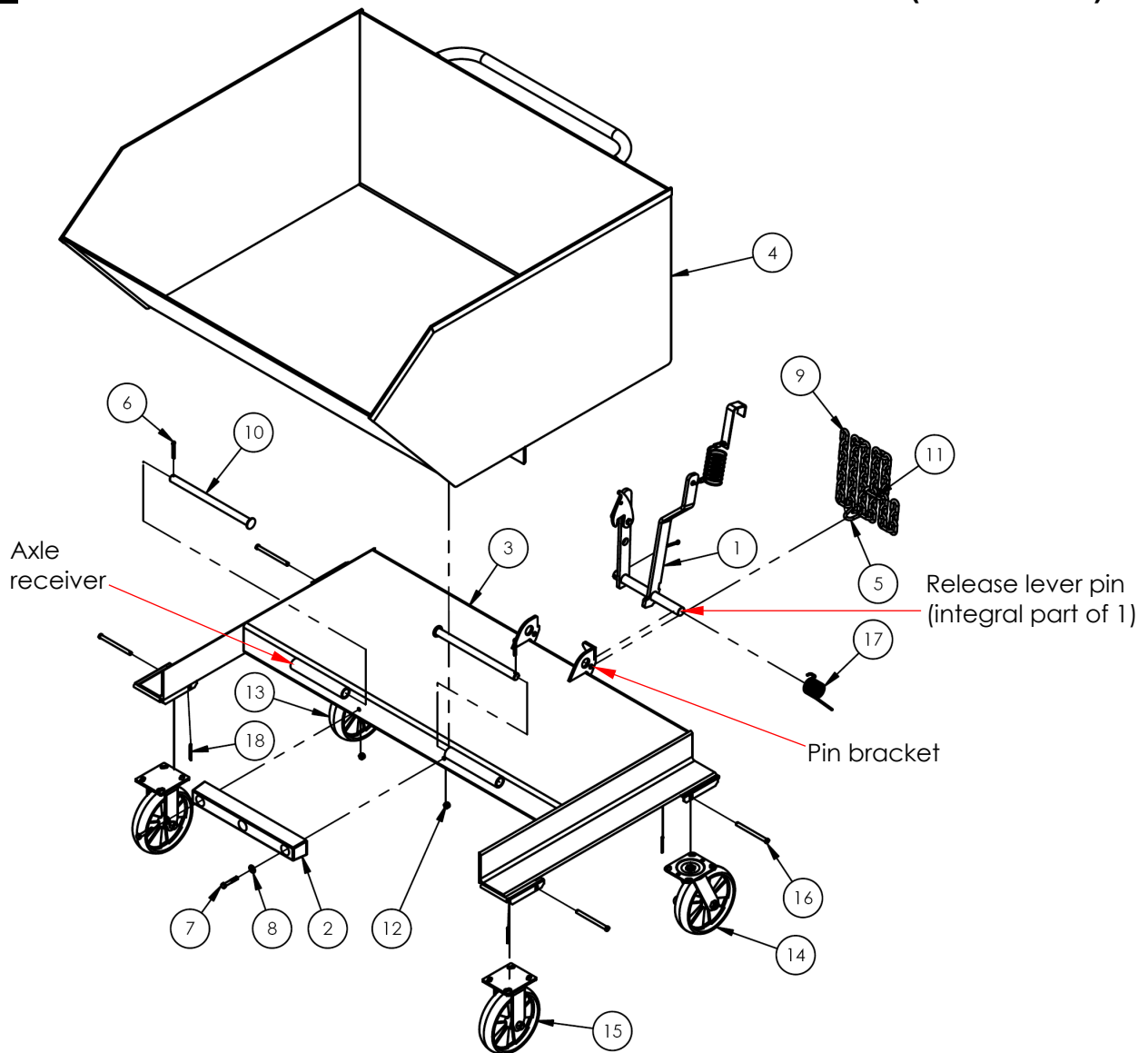
Item no.	Part no.	Description	Quantity
1	37-514-097	WELDMENT, BASE, FRAME	1
2	29-048-061	BUMPER, RUBBER	1
3	11061	HHCS #2 Z PLATED, Ø 5/16 - 18 x 2" LG	2
4	37021	NYLON INSERT LOCK NUT, GRADE 2, ZINC FINISH, 5/16"-18	2
5	37-112-010	PIN, HINGE AXLE	1
6	16-132-208	CASTER, SWIVEL, 8" X 2"	1
7	64137	SPRING PIN,AISI 1070-1095,PLAIN FINISH, Ø3/16 x 1 1/2" LG.	2
8	16-132-233	CASTER, RIGID, GFN-8/2-R	2
9	33006	FLAT WASHER,ZINC PLATED,USS, Ø5/16"	2
10	37-537-021	WELDMENT, LOCK, RELEASE LEVER ASSEMBLY	1
11	99-145-053	5/16" QUICK LINK	1
12	37-545-010	WELDMENT, CHUTE	1
13	37-146-005	SPRING,TORSION,HOPPER RELEASE	1
14	99-145-084	LAP LINK, 5/16" X 1 1/2"	1
15	65127	COTTER PIN Z PLATED, 3/16 x 2	1
16	09-145-018	CHAIN, 5/16" x 56" LG	1
17	16-132-248	GFN-8/2-S-SWB	1
18	99-112-006	PIN, CLEVIS	4
19	65080	EXTENDED PRONG COTTER PIN, ZINC FINISH, 1/8" x 2"	4

FIG. 2: P-HOP-0.75 EXPLODED VIEW AND BILL OF MATERIALS (37-006-163)



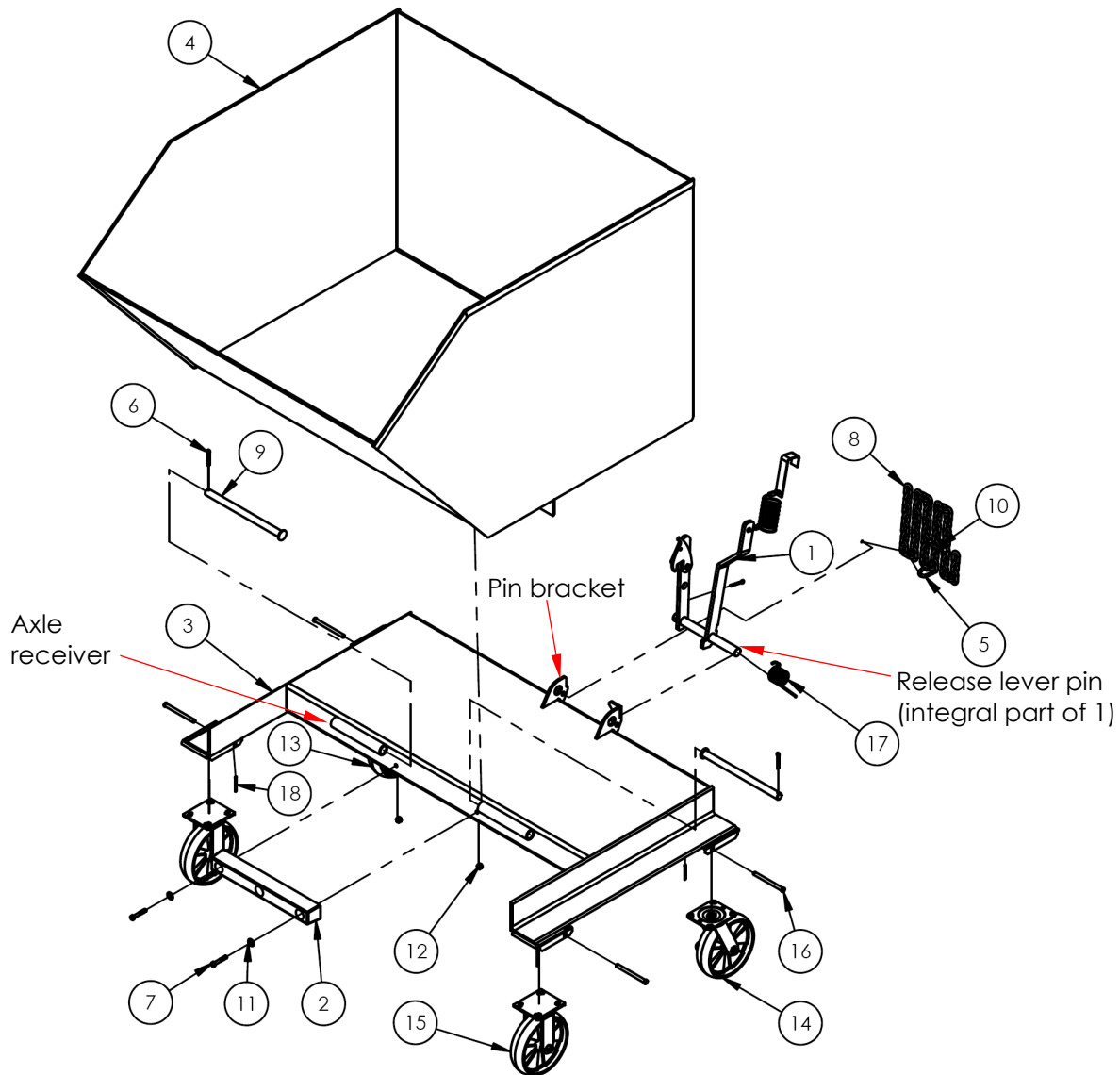
Item no.	Part no.	Description	Quantity
1	37-514-097	WELDMENT, BASE, FRAME	1
2	29-048-061	BUMPER, RUBBER	1
3	11061	HHCS #2 Z PLATED, Ø 5/16 - 18 x 2" LG	2
4	37021	NYLON INSERT LOCK NUT, GRADE 2, ZINC FINISH, 5/16"-18	2
5	37-112-010	PIN, HINGE AXLE	1
6	16-132-208	CASTER, SWIVEL, 8" X 2"	1
7	64137	SPRING PIN,AISI 1070-1095,PLAIN FINISH, Ø3/16 x 1 1/2" LG.	2
8	16-132-233	CASTER, RIGID, GFN-8/2-R	2
9	33006	FLAT WASHER,ZINC PLATED,USS, Ø5/16"	2
10	37-537-021	WELDMENT, LOCK, RELEASE LEVER ASSEMBLY	1
11	99-145-053	5/16" QUICK LINK	1
12	5721-545-010	WELDMENT, CHUTE	1
13	37-146-005	SPRING,TORSION,HOPPER RELEASE	1
14	99-145-084	LAP LINK, 5/16" X 1 1/2"	1
15	65127	COTTER PIN Z PLATED, 3/16 x 2	1
16	09-145-018	CHAIN, 5/16" x 56" LG	1
17	16-132-248	GFN-8/2-S-SWB	1
18	99-112-006	PIN, CLEVIS	4
19	65080	EXTENDED PRONG COTTER PIN, ZINC FINISH, 1/8" x 2"	4

FIG. 3: P-HOP-1 EXPLODED VIEW AND BILL OF MATERIALS (37-006-001)



Item no.	Part no.	Description	Quantity
1	37-537-021	WELDMENT, LOCK, RELEASE LEVER ASSEMBLY	1
2	29-048-061	BUMPER, RUBBER	1
3	37-514-096	WELDMENT, BASE, FRAME	1
4	37-545-001	WELDMENT, CHUTE	1
5	99-145-084	LAP LINK, 5/16" X 1 1/2"	1
6	65127	COTTER PIN Z PLATED, 3/16 x 2	3
7	11061	HHCS #2 Z PLATED, Ø 5/16 - 18 x 2" LG	2
8	33006	FLAT WASHER, ZINC PLATED, USS, Ø5/16"	2
9	09-145-018	CHAIN, 5/16" x 56" LG	1
10	37-112-045	PIN, HINGE AXLE	2
11	99-145-053	5/16" QUICK LINK	1
12	37021	NYLON INSERT LOCK NUT, GRADE 2, ZINC FINISH, 5/16"-18	2
13	16-132-208	CASTER, SWIVEL, 8" X 2"	1
14	16-132-248	GFN-8/2-S-SWB	1
15	16-132-233	CASTER, RIGID, GFN-8/2-R	2
16	99-112-006	PIN, CLEVIS	4
17	37-146-005	SPRING, TORSION, HOPPER RELEASE	1
18	65080	EXTENDED PRONG COTTER PIN, ZINC FINISH, 1/8" x 2"	4

FIG. 4: P-HOP-1.5 EXPLODED VIEW AND BILL OF MATERIALS (37-006-002)



Item no.	Part no.	Description	Quantity
1	37-537-021	WELDMENT, LOCK, RELEASE LEVER ASSEMBLY	1
2	29-048-061	BUMPER, RUBBER	1
3	37-514-096	WELDMENT, BASE, FRAME	1
4	37-545-002	WELDMENT, CHUTE	1
5	99-145-084	LAP LINK, 5/16" X 1 1/2"	1
6	65127	COTTER PIN Z PLATED, 3/16 x 2	3
7	11061	HHCS #2 Z PLATED, Ø 5/16 - 18 x 2" LG	2
8	09-145-018	CHAIN, 5/16" x 56" LG	1
9	37-112-045	PIN, HINGE AXLE	2
10	99-145-053	5/16" QUICK LINK	1
11	33006	FLAT WASHER,ZINC PLATED,USS, Ø5/16"	2
12	37021	NYLON INSERT LOCK NUT, GRADE 2, ZINC FINISH, 5/16"-18	2
13	16-132-208	CASTER, SWIVEL, 8" X 2"	1
14	16-132-248	GFN-8/2-S-SWB	1
15	16-132-233	CASTER, RIGID, GFN-8/2-R	2
16	99-112-006	PIN, CLEVIS	4
17	37-146-005	SPRING,TORSION,HOPPER RELEASE	1
18	65080	EXTENDED PRONG COTTER PIN, ZINC FINISH, 1/8" x 2"	4

NATIONAL STANDARDS

US OSHA Rule 1910.178 (29 CFR 1910.178; the "Rule") classifies this device as a "front-end attachment" whenever it is mounted on a lift truck. The Rule incorporates American National Standard ANSI/ITSDF B56.1 (the "Standard"). The Standard is published by the Industrial Truck Standards Development Foundation on its website (www.itsdf.org) where it is freely downloadable at <http://www.itsdf.org/cue/b56-standards.html>.

Before putting this device into service, acquire a copy of the Standard. Apply all relevant parts of Part II: For the User. If instructions provided in this manual apparently conflict with the Standard, then apply the instructions in the Standard. Vestil requests that you immediately share any conflicts you discover with its [TECHNICAL SERVICE](#) personnel. Contact information is provided on the cover page of this manual.

LOADING & DUMPING A HOPPER

⚠WARNING Do not exceed the load rating or fill the hopper above the top of the sides. Serious personal injury (or property damage) could result from overloading the hopper.

LOADING

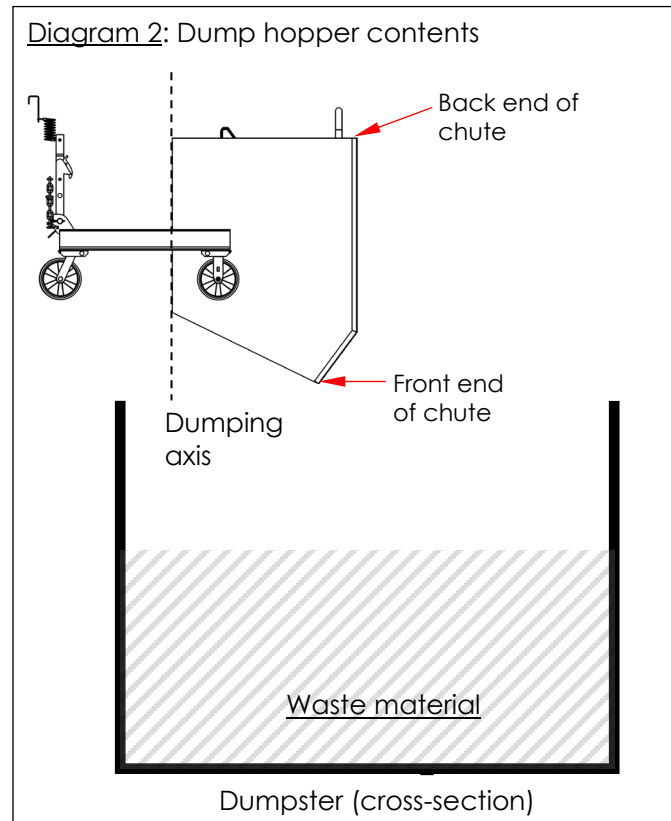
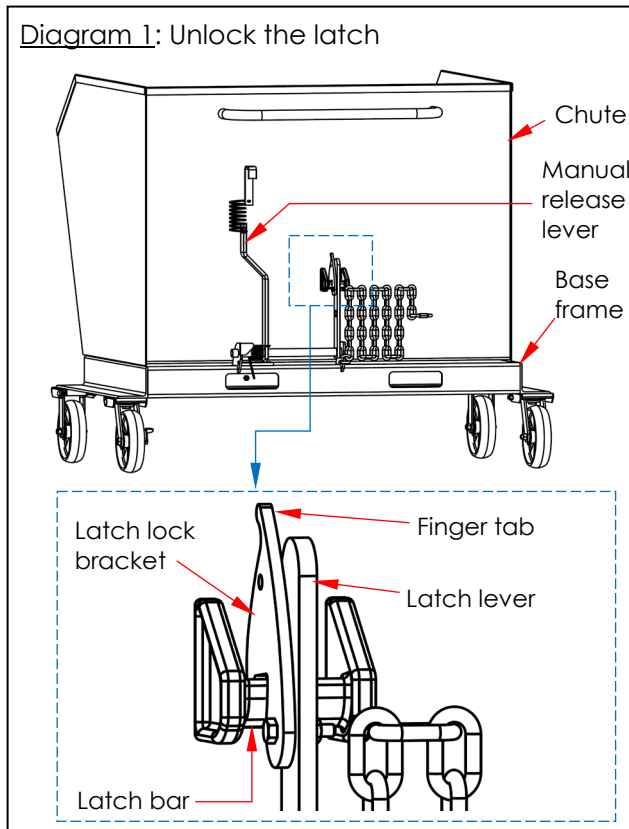
Verify that the hopper chute is latched to the base frame, i.e. NOT released and cannot rotate, before filling the chute with refuse. Standard P-HOP-series dumping hoppers are designed for indoor and outdoor use in most industrial and commercial settings. They should be used as a means for dumping non-hazardous refuse into larger trash receptacles. Whenever the hopper is stationary, engage the [CASTER BRAKE](#). See [p. 9](#).

DUMPING

Mount the hopper on the forks of a lift truck and secure it in place with the safety chain. Wrap the free end of the chain around the lift carriage; then fasten the quick link to a link in the chain. The chain must be taut (no slack) to prevent the hopper from being able to slide on the forks.

Store the handle of the release cable within reach of the forklift operator, for instance, by hooking it to the frame of the forklift cab. Make sure that there is plenty of slack in the cable to avoid accidentally releasing the chute.

The chute cannot dump unless the latch is unlocked. Unlock the latch by pulling the finger tab at the top end of the latch lock bracket until the bracket disengages the latch bar (refer to [DIAGRAM 1](#) below). Raise the hopper above the dumpster and drive forward until the dump axis is clearly over the inside of the dumpster as shown in Diagram 2 below.



1. Dump the contents of the hopper by releasing the chute. To release the chute, pull the release cable. The hopper will pivot about the dump axis and release the contents.

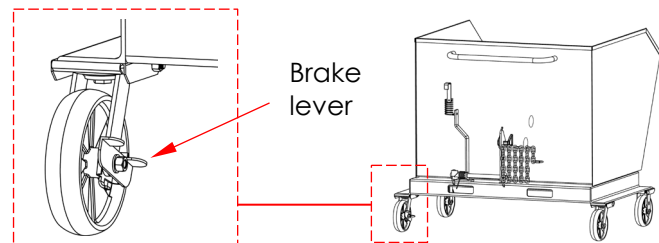
⚠ WARNING

DO NOT wrap the release cable around your hand/fingers or attach the handle to your clothing!

2. Latch the chute to the base.
 - a. Manually: slowly lower the forks until the hopper rests on the ground. The chute will pivot towards the frame. Press the back end of the chute onto the base until the latch lever engages the latch bar. See Diagram 1.
 - b. Remotely (using the side of the dumpster): Raise the fork tips by tilting the forklift mast toward the cab. Then, back away from the dumpster. Slowly lower the forks until the front end of the chute contacts to top of the dumpster. Continue to slowly lower the forks until the chute pivots onto the base frame. You should hear the latch lever snap over the latch bar. Confirm that the chute is securely latched by raising the forks. The chute should not rotate. If necessary, lower the forks completely and manually latch the chute to the frame.
3. Lock the latch by reversing the process of step 3. **DO NOT** move the hopper until the latch is locked!

CASTER BRAKE

Each P-HOP series hopper has 2 swiveling casters in back, one of which is equipped with a brake. To engage the brake, press the brake lever down. When the brake is engaged the wheel will not rotate. To disengage the brake, lift the brake lever up.



RECORD OF SATISFACTORY CONDITION

Before using this hopper for the first time, create a record OF its appearance and features. Include descriptions of the chute, base, carriage chain and quick link, pivot points and pivot point hardware, casters, caster mounting hardware, and the chute release mechanism. Release the chute. Describe how the unit looks and sounds as the chute rotates. Also describe the force necessary to release the chute using both the manual release lever and the cable. Secure the chute to the base and describe how the latch mechanism works. Thoroughly photograph the unit and all labels applied to it. Collect all writings and photographs in a single file. This file is a record of the unit in satisfactory condition. **Compare all inspection results to this RECORD to determine if the unit is in satisfactory condition.** Restore the hopper to satisfactory condition BEFORE using it again. Purely cosmetic changes, like damaged surface coating (paint or powdercoat) are not changes from satisfactory condition. However, touchup paint should be applied as soon as damage occurs to prevent rusting.

INSPECTIONS & MAINTENANCE

Inspections and repairs should only be performed by qualified persons. Compare the results of each inspection to the [RECORD OF SATISFACTORY CONDITION](#) (the "RECORD"). Do not use the hopper unless all parts are in satisfactory condition. Replace parts that are not in satisfactory condition before using the hopper again. **DON'T GUESS! If you have any questions about the condition of your hopper, speak with TECHNICAL SERVICE personnel.** The phone number is provided on the cover page of this manual. **Never make temporary repairs of damaged or missing parts.** Only use manufacturer-approved replacement parts.

Inspections [refer to applicable [EXPLODED VIEW](#) on p. 4, 5, 6, or 7]:

- (A) Before each use inspect the following components:
 - 1.) Release cable – look for fraying, birdcaging, thinning.
 - 2.) Hopper chute or base frame – check for damage, deformation, corrosion or severely rusted regions.
 - 3.) Pivot points – as the chute rotates (after releasing it), listen for unusual noise and watch for binding as the chute rotates. Also look for distortion of the axle pins or axle receivers.

- 4.) Release/Latch mechanisms – test the chute release mechanism (“lock release, lever assembly”). The torsion spring should cause the lever assembly to automatically recoil and firmly latch the chute to the frame.
 - 5.) Safety chain – check the chain for damaged links (broken, cracked, elongated).
- (B) Inspect the following components at least once per month. Replace any component that is excessively worn or no longer operates normally:
- 1.) Pivot points – look for excessive wear, warping, or other damage to the release lever pin, pin brackets, axles pins, and axle receivers. Listen for unusual noises and watch for irregular movement. Remove dirt and debris from areas that could affect the hopper’s dumping motion.
 - 2.) Fasteners (bolts, nuts, axle pins, cotter pins, retaining rings) – inspect for looseness and wear.
 - 3.) Casters – check for looseness, excessive wear, or damage to the casters, caster bearings, mounting brackets, and hardware. Confirm that the brake functions properly.
 - 4.) Release mechanism – verify that the mechanisms function properly: 1) torsion spring firmly latches the lock release lever assembly (“lever assembly”) to the chute; 2) the latch lock bracket should seat on the latch bar unless manually disengaged (see [Diagram 1](#) on p. 8); 3) lever assembly pivots smoothly and securely engages the latch bar.
 - 5.) Chute – examine the chute. The structure should be rigid and square without corroded holes or severely rusted areas.
 - 6.) Supporting frame – examine the frame. It should be rigid and square, welds should be intact, and fork pockets should be square and sound.
 - 7.) Labels – all labels must be applied to the hopper in the locations shown in the [LABELING DIAGRAM](#) on p. 11.

Maintenance:

Implement a maintenance program to ensure that the product functions properly.

Step 1: Tag the hopper, “Out of Service.”

Step 2: Remove dirt and debris from all surfaces.

Step 3: Conduct the scheduled inspection. If deformity, corrosion, rusting, or excessive wear of the frame or chute is discovered, remove it from service.

Step 4: Perform all necessary adjustments, replacements and/or repairs, but DO NOT modify the hopper.

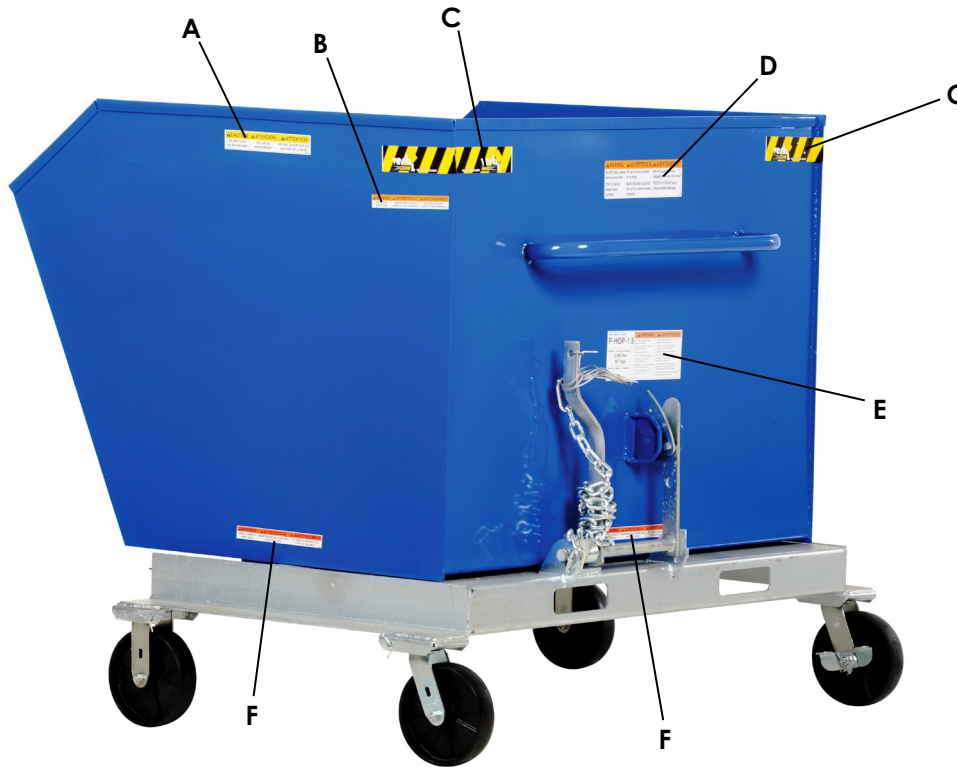
⚠WARNING The reader should understand the significant difference between necessary adjustments and repairs, and modifications. Adjustments are simple corrections that restore the hopper to normal operating condition, such as tightening loose fasteners, or removing dirt or other debris from the surface. Repairs involve removing worn parts and installing new/replacement parts.

A “modification” is a change that alters the hopper from normal operating condition, such as bending the frame or removing a part or several parts. **NEVER** modify the hopper. Modifications automatically void the [LIMITED WARRANTY](#) (p. 12) and might make the hopper unsafe to use.

Step 5: Make a dated record of any repairs, adjustments, and/or replacements.

LABELING DIAGRAM

Label content and locations are subject to change so your product might not be labeled exactly as shown. Compare the diagram below to your [RECORD OF SATISFACTORY CONDITION](#). If there are any differences between actual labeling and this diagram, contact [TECHNICAL SERVICE](#). Replace all labels that are damaged, missing, or not easily readable (e.g. faded). To order replacement labels or to inquire whether your unit is properly labeled, contact the [TECHNICAL SERVICE](#) and parts department online at <https://www.vestil.com/page-parts-request.php> or by calling (260) 665-7586 and asking for the Parts Department.



A: Label 375 (both sides)

⚠ WARNING ⚠ ADVERTENCIA ⚠ AVERTISSEMENT		
DO NOT PLAY ON OR AROUND	NO JUEGE ALREDEDOR	NE PAS JOUER SUR OU AUTOUR DE L'UNITÉ

B: Label 220 (both sides)

⚠ WARNING ⚠ ADVERTENCIA ⚠ AVERTISSEMENT		
KEEP CLEAR WHEN IN USE	MANTENGASE ALEJADO CUANDO SE ESTA OPERANDO	SE TENIR À DISTANCE LORS DU FONCTIONNEMENT

C: Label 635 (both rear corners of chute)



D: Label 620

⚠ WARNING ⚠ ADVERTENCIA ⚠ AVERTISSEMENT		
DO NOT wrap release cable around hand	NO se envuelva el cable en la mano	NE PAS rouler câble de dégagement autour de la main
STAY CLEAR of hopper when dumping	MANTENGASE ALJEADO del carrito cuando se este volcando	RESTER À L'ÉCART de la trémie pendant bennage
VESTIL MANUFACTURING CORPORATION • 800-648-0868 • sales@vestil.com • www.vestil.com		

E: Label 547 (P-HOP-1)
548 (P-HOP-1.5)
632 (P-HOP-0.5)

Model / Modelo / Modele	⚠ WARNING ⚠ ADVERTENCIA	
P-HOP-	<ul style="list-style-type: none"> SECURELY ATTACH safety restraint to forklift Tilt load backwards to prevent hopper from sliding Distribute load evenly DO NOT exceed rated capacity Hopper MUST be locked when not dumping Disengage lock on hopper release before dumping hopper DO NOT wrap release cable around any body part 	<ul style="list-style-type: none"> ASEGURE la cadena de seguridad a la transpaleta Vuelque la carga hacia atras para prevenir que el carrito resbale Distribuya la carga uniformemente NO exceda la capacidad de carga tasada El depósito de alimentación debe ser cerrado al no descargar Suete cerradura en la liberación de depósito de alimentación antes de descargar depósito de alimentación No envuelva cable de liberación alrededor de cualquier parte del cuerpo
Capacity / Capacidad / Capacité		
lb. kg		
Serial No. / Serie No. / Serie No.		
	547 REV 1011	

F: Label 208 (both sides & back)

⚠ WARNING ⚠ ADVERTENCIA ⚠ AVERTISSEMENT		
KEEP CLEAR OF PINCH POINT	MANTENGASE ALEJADO DEL PUNTO DE CORTE	SE TENIR À DISTANCE DU POINT DE PINCEMENT

LIMITED WARRANTY

Vestil Manufacturing Corporation ("Vestil") warrants this product to be free of defects in material and workmanship during the warranty period. Our warranty obligation is to provide a replacement for a defective, original part covered by the warranty after we receive a proper request from the Warrantee (you) for warranty service.

Who may request service?

Only a warrantee may request service. You are a warrantee if you purchased the product from Vestil or from an authorized distributor AND Vestil has been fully paid.

Definition of "original part"?

An original part is a part used to make the product as shipped to the Warrantee.

What is a "proper request"?

A request for warranty service is proper if Vestil receives: 1) a photocopy of the Customer Invoice that displays the shipping date; AND 2) a written request for warranty service including your name and phone number. Send requests by one of the following methods:

<u>US Mail</u>	<u>Fax</u>	<u>Email</u>
Vestil Manufacturing Corporation 2999 North Wayne Street, PO Box 507 Angola, IN 46703	(260) 665-1339 <u>Phone</u> (260) 665-7586	info@vestil.com Enter "Warranty service request" in subject field.

In the written request, list the parts believed to be defective and include the address where replacements should be delivered. After Vestil receives your request for warranty service, an authorized representative will contact you to determine whether your claim is covered by the warranty. Before providing warranty service, Vestil will require you to send the entire product, or just the defective part (or parts), to its facility in Angola, IN.

What is covered under the warranty?

The warranty covers defects in the following original, dynamic parts: motors, hydraulic pumps, motor controllers, and cylinders. It also covers defects in original parts that wear under normal usage conditions ("wearing parts"), such as bearings, hoses, wheels, seals, brushes, and batteries.

How long is the warranty period?

The warranty period for original dynamic components is 1 year. For wearing parts, the warranty period is 90 days. Both warranty periods begin on the date Vestil ships the product to the Warrantee. If the product was purchased from an authorized distributor, the periods begin when the distributor ships the product. Vestil may, at its sole discretion, extend a warranty period for products shipped from authorized distributors by up to 30 days to account for shipping time.

If a defective part is covered by the warranty, what will Vestil do to correct the problem?

Vestil will provide an appropriate replacement for any covered part. An authorized representative of Vestil will contact you to discuss your claim.

What is not covered by the warranty?

The Warrantee (you) is responsible for paying labor costs and freight costs to return the product to Vestil for warranty service.

Events that automatically void this Limited Warranty.

- Misuse;
- Negligent assembly, installation, operation or repair;
- Installation/use in corrosive environments;
- Inadequate or improper maintenance;
- Damage sustained during shipping;
- Collisions or other accidents that damage the product;
- Unauthorized modifications: Do not modify the product IN ANY WAY without first receiving written authorization from Vestil.

Do any other warranties apply to the product?

Vestil Manufacturing Corp. makes no other express warranties. All implied warranties are disclaimed to the extent allowed by law. Any implied warranty not disclaimed is limited in scope to the terms of this Limited Warranty. Vestil makes no warranty or representation that this product complies with any state or local design, performance, or safety code or standard. Noncompliance with any such code or standard is not a defect in material or workmanship.

