

Product data sheet

Characteristics

QO124M200P

Load center, QO, 1 phase, 24 spaces, 36 circuits, 200A convertible main breaker, PoN, NEMA1, UL



Main

| | |
|----------------------|-------------|
| Marketing Trade Name | QO |
| Product Type | Load Center |

Complementary

| | |
|--|------------------------------------|
| Tightening Torque | Cover: 20 lb.in |
| Load Center Type | Main breaker |
| Rated Current | 200 A |
| Number of Spaces | 24 |
| Max Short Circuit Current Rating | 22 kA |
| Maximum Number of Single Pole Circuits | 36 |
| Maximum Number of Tandem Breakers | 12 |
| Number of Phases | 1 phase |
| Ground Bar | Grounding bar (ordered separately) |
| Box Number | 9 |
| Height | 29.86 in (758.44 mm) |
| Width | 14.25 in (361.95 mm) |
| Depth | 3.75 in (95.25 mm) |

Environment

| | |
|---------------------------------------|---------------------------------|
| Enclosure Rating | NEMA 1 for indoor |
| Ambient Air Temperature for Operation | 23 °F (-5 °C) 104 °F (40 °C) |
| Product Certifications | UL Listed |

Ordering and shipping details

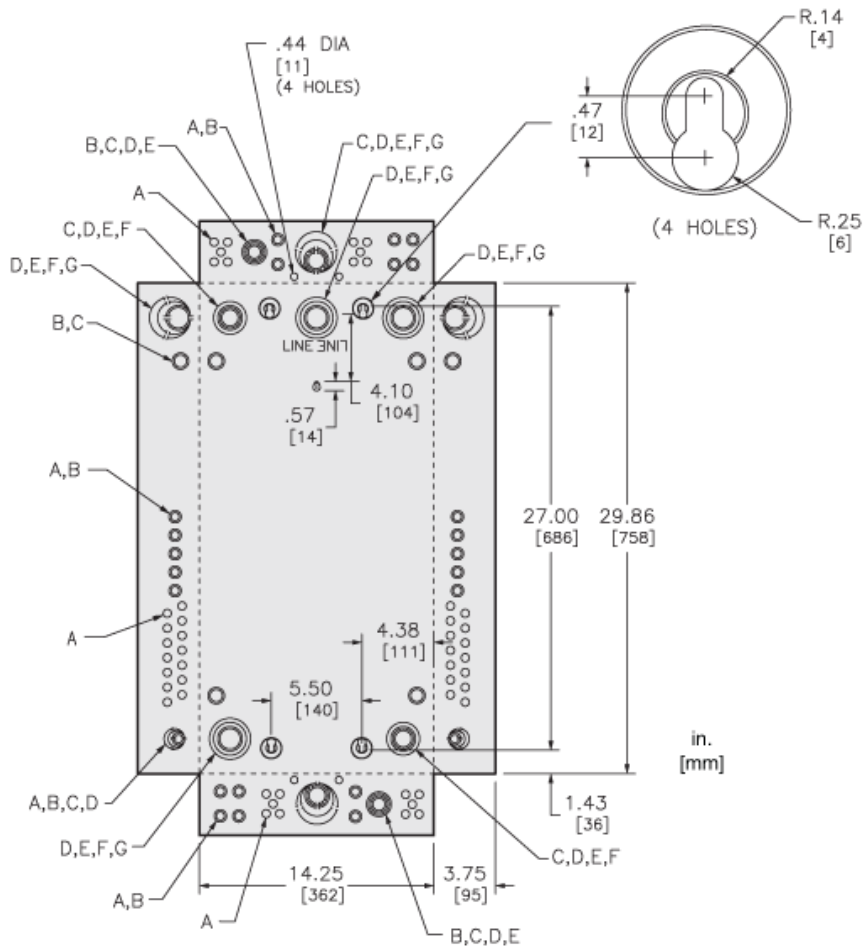
| | |
|-----------------------|--|
| Category | 10001 - QO PON 1PH LC,12-60 CKT, MB N1 |
| Discount Schedule | DE3A |
| GTIN | 00785901611189 |
| Nbr. of units in pkg. | 1 |
| Package weight(Lbs) | 1 lb(US) (0.45 kg) |
| Returnability | Yes |

The information provided in this documentation contains general descriptions and/or technical characteristics of the performance of the products contained herein. This documentation is not intended as a substitute for and is not to be used for determining suitability or reliability of these products for specific user applications. It is the duty of any such user or integrator to perform the appropriate and complete risk analysis, evaluation and testing of the products with respect to the relevant specific application or use thereof. Neither Schneider Electric Industries SAS nor any of its affiliates or subsidiaries shall be responsible or liable for misuse of the information contained herein.

Offer Sustainability

| | |
|----------------------------|---|
| California proposition 65 | WARNING: This product can expose you to chemicals including: Lead and lead compounds, which is known to the State of California to cause cancer and birth defects or other reproductive harm. For more information go to www.P65Warnings.ca.gov |
| REACH Regulation | REACH Declaration |
| REACH free of SVHC | Yes |
| EU RoHS Directive | Compliant EU RoHS Declaration |
| Toxic heavy metal free | Yes |
| Mercury free | Yes |
| RoHS exemption information | Yes |
| China RoHS Regulation | China RoHS Declaration |

Approximate Dimensions



| KNOCKOUTS | | | | | | | |
|-----------|-----|-----|------|------|------|------|------|
| SYMBOL | A | B | C | D | E | F | G |
| IN | .50 | .75 | 1.00 | 1.25 | 1.50 | 2.00 | 2.50 |
| MM | 13 | 19 | 25 | 32 | 38 | 51 | 64 |

Connections and Wiring Diagrams

