

**TWO-DOOR FREE-STAND, TYPE 4X**

**INDUSTRY STANDARDS**

UL 508A Listed; Type 3, 3R, 4, 4X, 12; File No. E61997  
 cUL Listed per CSA C22.2 No 94; Type 3, 3R, 4, 4X, 12; File No. E61997  
 Enclosure flammability evaluated per UL 508A

NEMA Type 3, 3R, 4, 4X, 12, 13  
 IEC 60529, IP66

**Meets NEMA Type 3RX requirements**

**APPLICATION**

An economical way to house electronics in corrosive environments, two-door enclosures provide easy access to equipment, larger capacity for control systems and steel reinforcements that ensure stability and strength. These enclosures feature captivated door screws and an optional POWERGLIDE Handle for secure latching.

**SPECIFICATIONS**

- Fiberglass-reinforced polyester material has excellent temperature and chemical resistance and exhibits outstanding physical properties. Epoxy vinyl ester material can be requested instead for protection against extremely corrosive chemical environments.
- Seams are sealed; no holes or knockouts
- Fiberglass material is easily punched, drilled, filed or sawed
- Models have either a 3-point latching system with handle or stainless steel captivated door screws
- Type 316 stainless steel POWERGLIDE Handle on handle versions
- Stainless steel captivated door screws on screw versions
- Gasket assures a watertight and dust-tight seal

- Painted steel top, bottom and side internal reinforcements standard; stainless steel corner reinforcements optional
- Two white painted, 12-gauge, mild-steel panels included.
- Solid centerpost (not removable) has heavy-gauge stiffener
- Heavy-duty Type 316 stainless steel lifting eyes
- Hinges are corrosion-resistant fiberglass with Type 316 stainless steel hinge pins
- Large data pocket (12.00 x 12.00 in. or 305 x 305 mm) is high-impact thermoplastic
- Molded-in angular sealing flange directs water away from gasket area
- Material is halogen free

**FINISH**

Standard fiberglass enclosure is gray inside and gel coated gray on the outside. White painted mild steel panels are included.

**ACCESSORIES**

*See also Accessories.*  
 Bottom Support Kits  
 Floor Stand Kit  
 H2OMIT Vent Drains, Type 4X  
 H2OMIT Thermoelectric Dehumidifier  
 HOL-SEALERS Non-Metallic Hole Seals

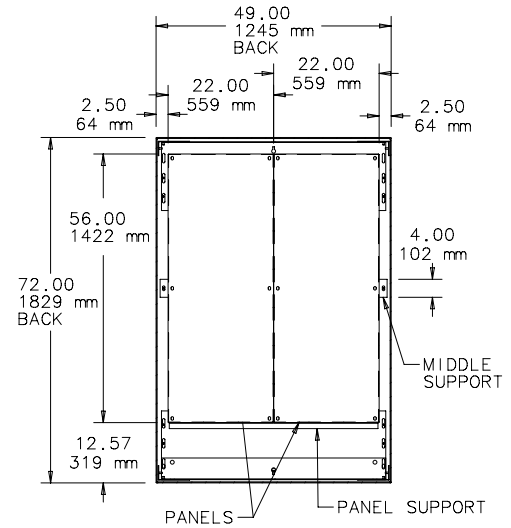
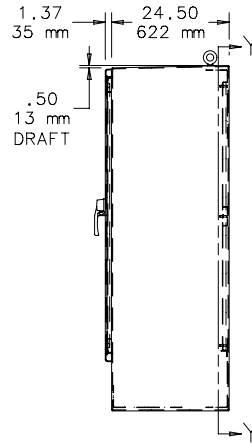
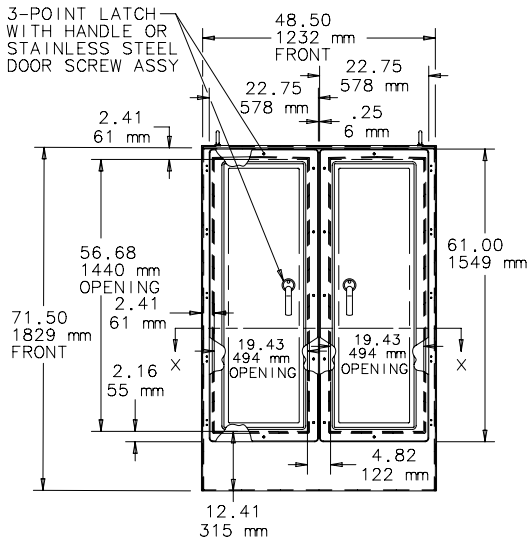
**MODIFICATION AND CUSTOMIZATION**

Hoffman excels at modifying and customizing products to your specifications. Contact your local Hoffman sales office or distributor for complete information.

**BULLETIN: A17**

**Standard Product**

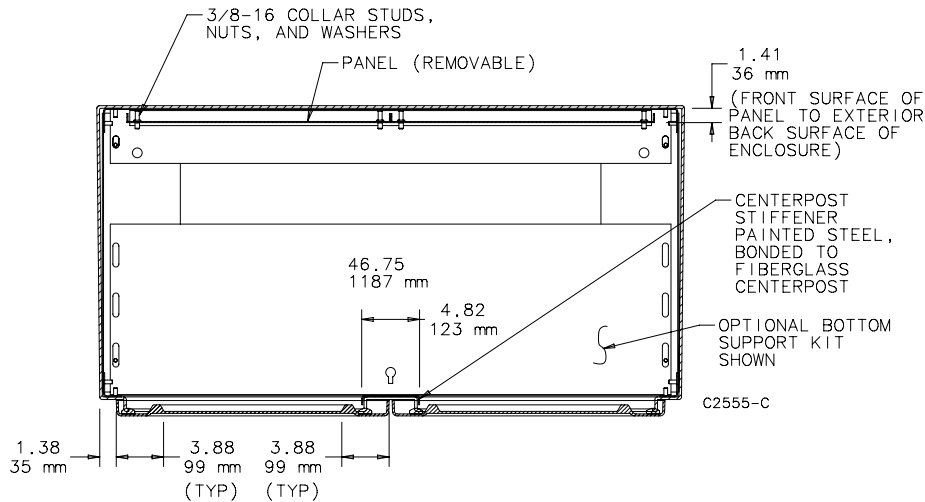
| Catalog Number | AxBxC in./mm                               | Number of Panels | Panel Size in./mm           |
|----------------|--|------------------|-----------------------------|
| A724925FG      | 72.00 x 49.00 x 24.50<br>1829 x 1245 x 622 | 2                | 56.00 x 22.00<br>1422 x 559 |
| A724925FGFS3PT | 72.00 x 49.00 x 24.50<br>1829 x 1245 x 622 | 2                | 56.00 x 22.00<br>1422 x 559 |



SECTION Y-Y

- NOTE:
1. Upper, middle, and lower supports as well as centerpost stiffener are steel.
  2. Optional Bottom Support Kit required when installing Caster, Floor-Stand Kit, or Unistrut Mounting Kit.

NOTE: Section Y-Y shown with the optional Bottom Support Kit and Unistrut Mounting Kit accessories installed.



SECTION X-X

## BOTTOM SUPPORT KITS

### BULLETIN: A17Y

| Catalog Number | Description  |
|----------------|--|
| A17SUPPORT2    | Inside Bottom Support - Enclosure bottom support to allow option of installing casters or floor stand kits |
| A17UNISTRUT    | Bolt-On Unistrut Channel (8 channels) - Painted steel unistrut for accessory mounting                      |

A17SUPPORT2 required to install A17UNISTRUT in two-door enclosures