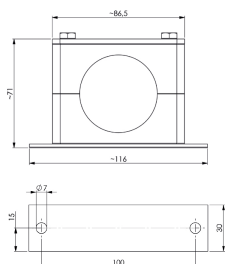
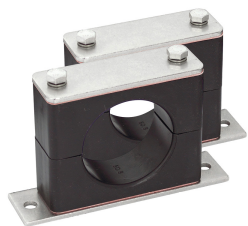


Clamp bracket



Product-Nr.	210200-09
EAN:	4260556622637
Model:	Leuchtenhalter INROLED_50
Order number:	210200-09
Model:	Leuchtenhalter INROLED_50
Type:	Clamp bracket
Amount:	1 pair
Suitable for:	INROLED_50, INROLED_50 RGB-W, INROLED_50 ECOlab
Material:	Clamping jaws: Polypropylene - PP; Cover plate: Stainless steel V4A; Seals: Silicone rubber, food-safe; Material: Metal / Plastic
Clamp material:	Polypropylen - PP
Cover plate material:	Stainless steel V4A
Material seals:	Silicone rubber, food-safe
Mounting plate material:	Stainless steel
Screws:	Hexagonal M6, 10 mm, stainless steel V4A
Dimensions (mm):	116 mm x 76 mm x 30 mm (~4,57" x ~2,99" x ~1,18")
Attachment to luminaire:	Luminaire is inserted into the lower part of the luminaire holder and clamp-fixed to the upper part with 2 hexagonal screws.
Attachment to luminaire:	Luminaire is inserted into the lower part of the luminaire holder and clamp-fixed to the upper part with 2 hexagonal screws.
Weight (net):	500 g (~18 oz)
Gross weight:	550 g (~19 oz)
Feature:	Luminaire holder for hygienically sensitive areas, F&B suitable