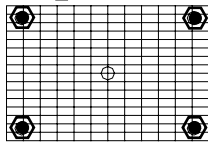


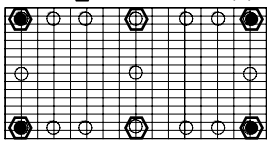
ADD-A-LEVEL™ ASSEMBLY INSTRUCTIONS

Components:

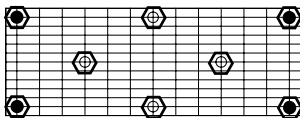
- (2) 2'x3' Platform
 ● Stackers - (4)
 ○ Rubber feet - (4)



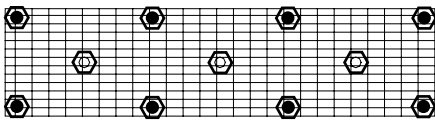
- (2) 2'x4' Platform
 ● Stackers - (4)
 ○ Rubber feet - (6)



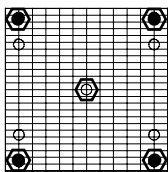
- (2) 2'x5.5' Platform
 ● Stackers - (4)
 ○ Rubber feet - (8)



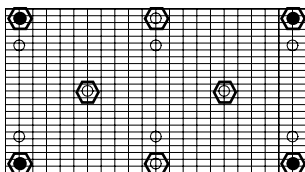
- (2) 2'x8' Platform
 ● Stackers - (4)
 ○ Rubber feet - (11)



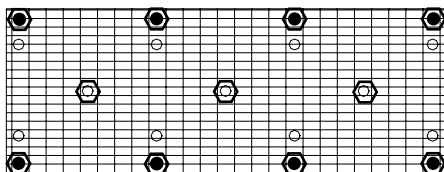
- (2) 3'x3' Platform
 ● Stackers - (4)
 ○ Rubber feet - (5)



- (2) 3'x5.5' Platform
 ● Stackers - (4)
 ○ Rubber feet - (8)

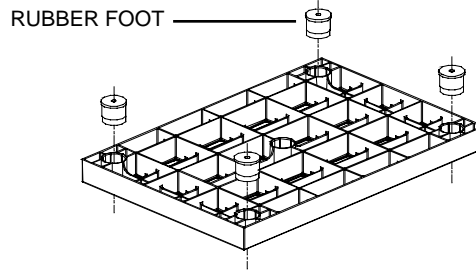


- (2) 3'x8' Platform
 ● Stackers - (8)
 ○ Rubber feet - (11)



Oil all sockets before assembly

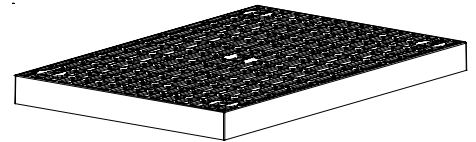
Base Unit



Step 1

Invert platform and insert rubber feet.

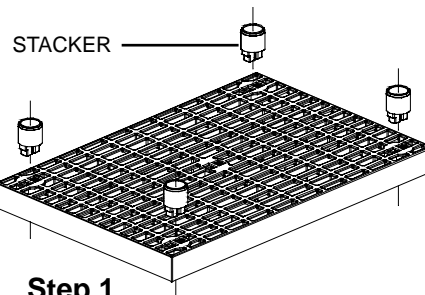
Note: Item may ship pre-assembled.



Add-on Unit

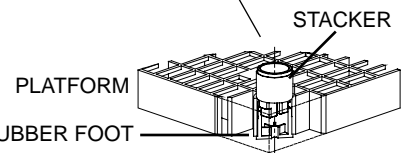
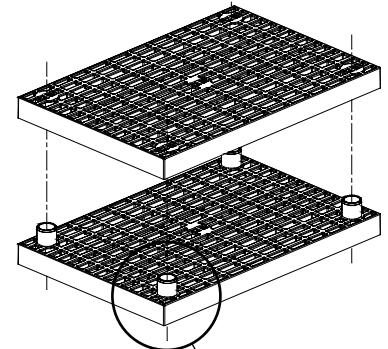
Note:

Larger platforms should be disassembled before moving. Proper lubrication of the sockets during assembly dramatically helps during disassembly. Separate panels equally by pulling apart the panels in small increments at the stackers until they are free.



Step 1

Set completed base unit upright and insert stackers in sockets as shown.



Step 2

Align upper-level platform and lower-level stackers. Push upper platform all the way down over stackers. Repeat steps for multi-level configurations.

ADD-A-LEVEL™ w/ PolyClip Instructions

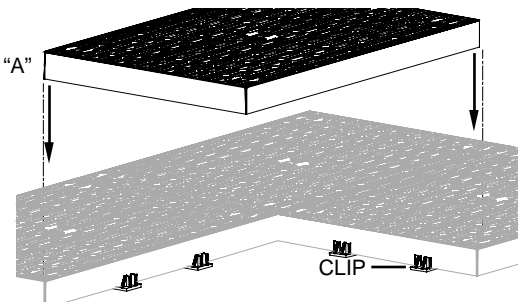
Step 1

Position clip on outside edge and inside rib as shown. Use at least two clips per panel joint.

Platform "A"

Step 2

Align Platform A and set down on clip using the outside edge and inside rib.

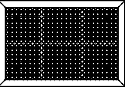


Optional Anti-Fatigue Matting ASSEMBLY INSTRUCTIONS

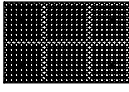
Components:

2'x3' Mat

Requires (4) Mat plugs



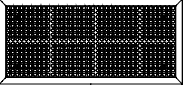
2'x3' Mat without border



Positioning of
• Mat plugs

2'x4' Mat

Requires (4) Mat plugs

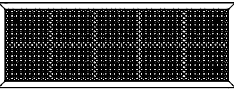


2'x4' Mat without border

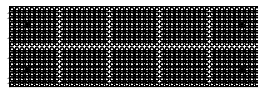


2'x5.5' Mat

Requires (4) Mat plugs

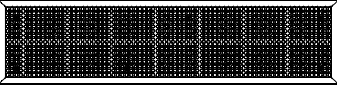


2'x5.5' Mat without border



2'x8' Mat

Requires (6) Mat plugs

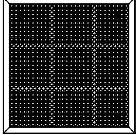


2'x8' Mat without border

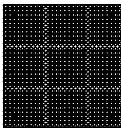


3'x3' Mat

Requires (4) Mat plugs



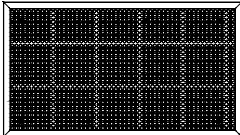
3'x3' Mat without border



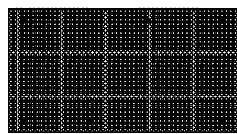
If mat hangs over,
turn mat 90 degrees
for proper fit.
(Only for 3'x3' mats.)

3'x5.5' Mat

Requires (6) Mat plugs

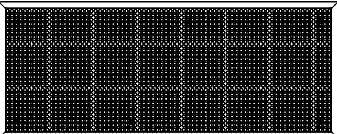


3'x5.5' Mat without border

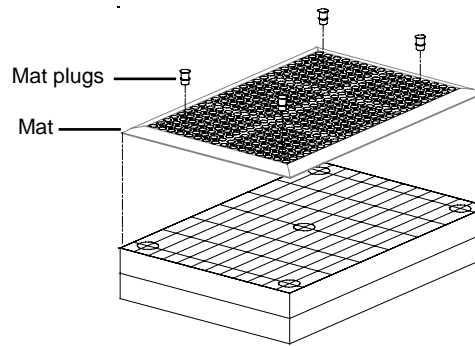
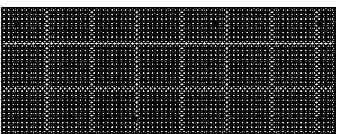


3'x8' Mat

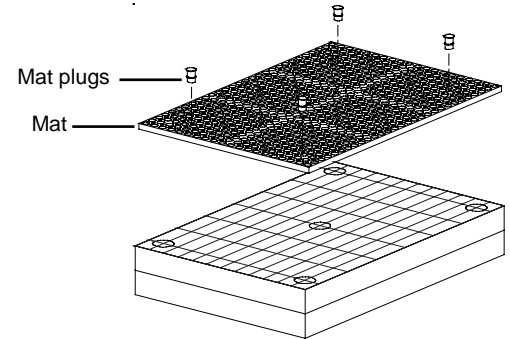
Requires (6) Mat plugs



3'x8' Mat without border



Mat with border



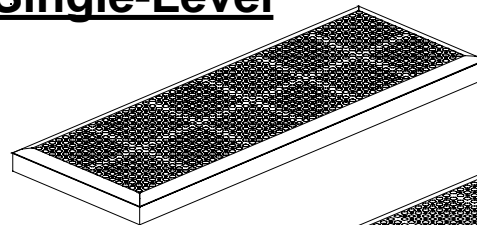
Mat without border

Mat

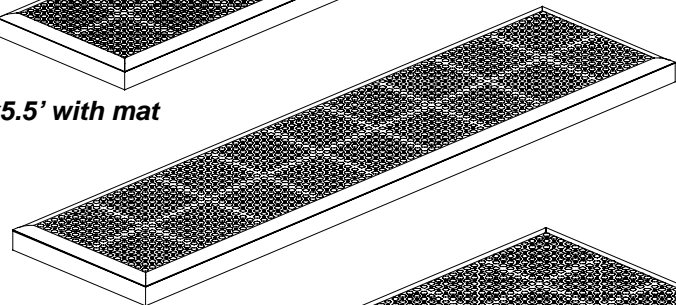
Align mat with platform and insert mat plugs through the holes in the mat approximately **4 holes by 4 holes from the corners**. Push plugs all the way down as shown, until the plugs are flush with the mat surface and locked into the grid of panel.

For the border mats insert the plugs approximately **3 holes by 3 holes from the corners**.

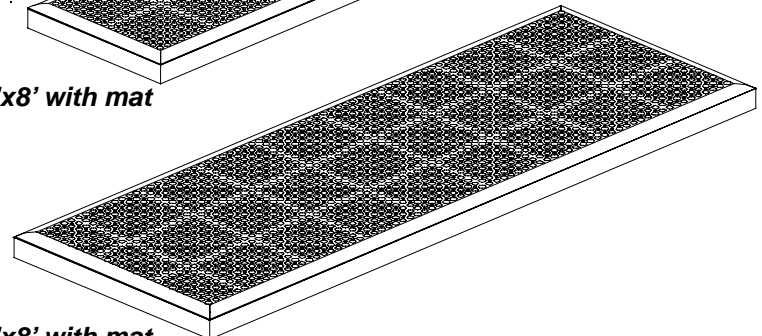
Single-Level



2'x5.5' with mat



2'x8' with mat



3'x8' with mat