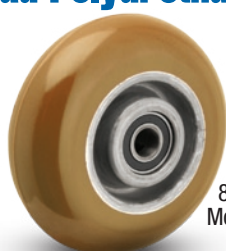


PM Round Tread Polyurethane on Aluminum Core



90 Shore A Models



80 Shore A Models

Composed of a polyurethane elastomer, open cast or injection molded, on clean, close tolerance cores. Wheels feature a chemical and mechanical lock of tread to the core. High capacity polyurethane protects floors, is non-marking and delivers quieter operation than standard metal wheels.

FEATURES

- **Hardness:** 90 Shore A (green) or 80 Shore A (butterscotch)
- Wheels are complete with top hat and spacers
- **Wheel face:** Round tread
- **Finish:** Green tread on aluminum core
- **Temperature Range:** -40 degrees to +180 degrees Fahrenheit

WHEEL OPTIONS

- Available in **80 Shore A** and **70 Shore D** consult factory.
- Note: Select bearings featured are recommended for standard applications. For special applications or alternate bearings consult factory. See bearing information on page 11.
- For customization & special application options, please consult factory.

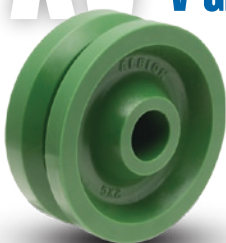
Wheel Diameter (Inches)	Tread Width (Inches)	Capacity (Lbs) (Rated for manual operation)	Hub Length (Inches)	Bore ID (Inches)	Bearing ID (Inches)	Approx. Wt. (Lbs)	Wheel Number Precision Ball (28)
5	2	1000	2-7/16	1-9/16	1/2	2	PM0522808
6	2	1250	2-7/16	1-9/16	1/2	3	PM0622808
8	2	1500	2-7/16	1-9/16	1/2	4	PM0822808
5	2	1000	2-7/16	1-9/16	1/2	2	PM052280880A
6	2	1250	2-7/16	1-9/16	1/2	3	PM062280880A
8	2	1500	2-7/16	1-9/16	1/2	4	PM082280880A



- Handle obstructions and swivel easier compared to flat tread wheels
- Precision ball bearing for ultimate rolling ease
- Wheel includes two spacers

Tread is mechanically and chemically bonded through a patented process to a light weight durable aluminum core

XV Polyurethane V-Groove Wheels



Wheel face and "V"-groove are machined from heavy duty polyurethane. A relief groove at the base of the "V" tends to equalize the load to each face of the angle track when in operation. Wheel face and bore are machined for concentricity to proper tracking. These wheels can be used not only on track but flat surfaces as well.

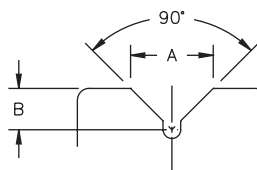
FEATURES

- **Hardness:** 60 Shore D
- **Wheel Face:** V-groove
- **Finish:** Green

WHEEL OPTIONS

- Note: Select bearings featured are recommended for standard applications. For special applications or alternate bearings consult factory. See bearing information on page 11.
- For customization & special application options, please consult factory.

Wheel Diameter (Inches)	Tread Width (Inches)	Capacity (Lbs) (Rated for manual operation)	Hub Length (Inches)	Bore ID (Inches)	Bearing ID (Inches)	Groove Width "A" (Inches)	Groove Depth "B" (Inches)	Approx. Wt. (Lbs)	Wheel Number Roller Bearing (02)
4	2	300	2-3/16	1-3/16	3/4	7/8	7/16	1	XV0420212
5	2	300	2-3/16	1-3/16	3/4	7/8	7/16	1-1/2	XV0520212
6	2	300	2-3/16	1-3/16	3/4	7/8	7/16	1-3/4	XV0620212
8	2	300	2-3/16	1-3/16	3/4	7/8	7/16	2-3/4	XV0820212



Please note: Track alignment is critical when utilizing v-groove wheels.