

# For Repair Parts, call 1-800-323-0620

24 hours a day – 365 days a year

Please provide following information:

- Model number
- Serial number (if any)
- Part description and number as shown in parts list

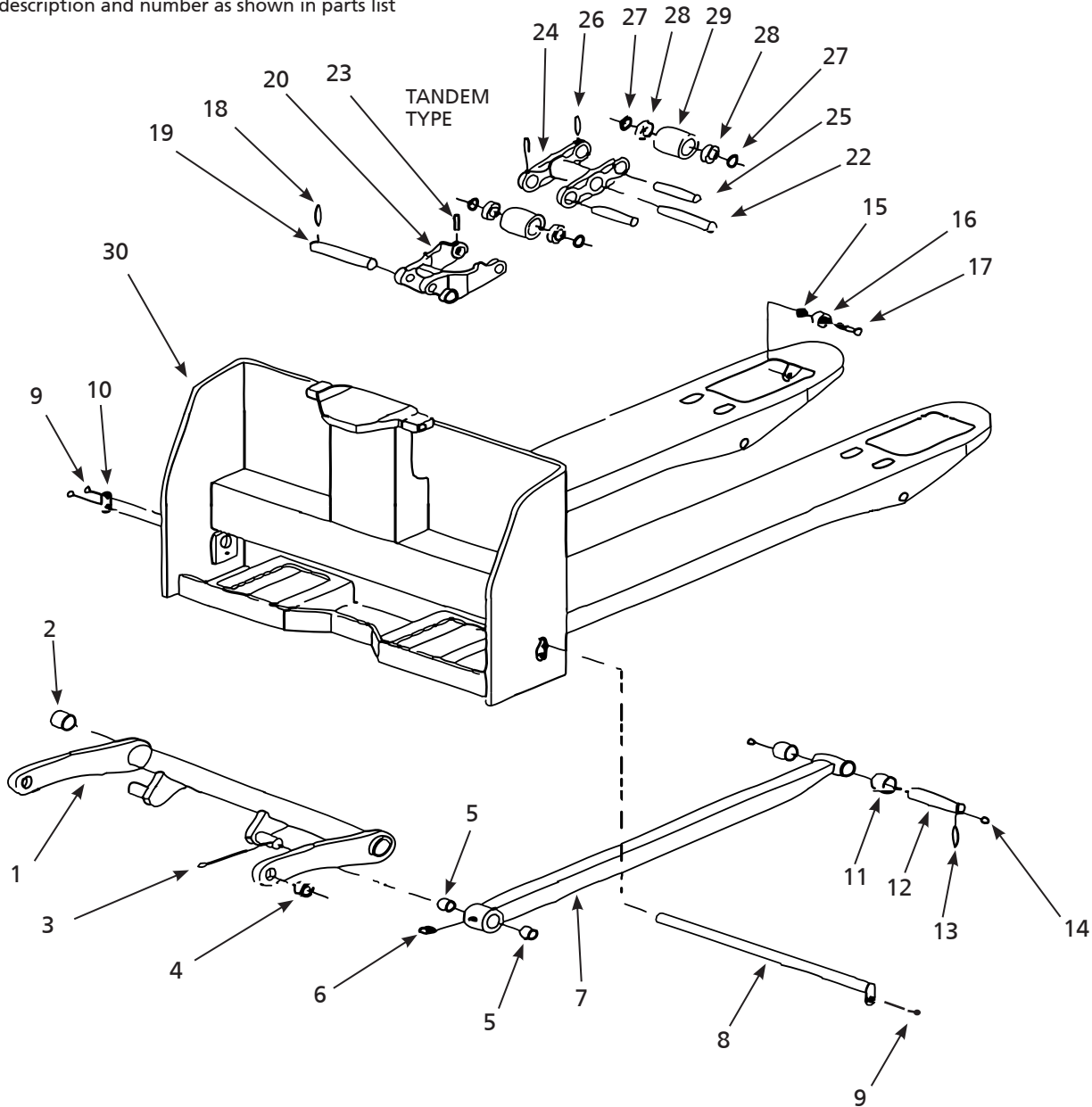


Figure 15 – Repair Parts Illustration for Pallet Truck Fork Frame (Model 2LEB8A)

## Repair Parts List for Pallet Truck Fork Frame

Reference Number	Description	Part Number	Quantity
1	Rocker arm	MH2LEB801	1
	Rocker arm bushing kit	MH2LEB802	
2	Bushing	▲	2
3	Split pin	▲	2
4	Shoulder bushing	▲	2
	Push rod bushing kit	MH2LEB803	
5	Bushing	▲	2
6	Grease cup	▲	1
7	Push rod	MH2LEB804	1
	Rocker arm shaft kit	MH2LEB805	
8	Rocker arm shaft	▲	1
9	Screw	▲	3
10	Bracket	▲	1
	Push rod pin kit	MH2LEB806	
11	Bushing	▲	2
12	Shaft	▲	1
13	Roll pin	▲	1
14	Grease fitting	▲	2
	Entry roller kit	MH2LEB807	
15	Locking nut	▲	1
16	Entry roller	▲	1
17	Bolt	▲	1
	Roller frame kit	MH2LEB808	
18	Roll pin	▲	1
19	Pivot pin	▲	1
20	Roller frame	▲	1
21	Grease fitting	▲, Δ	1
	Tandem roller frame kit	MH2LEB809	
22	Pivot pin	▲	1
23	Roll pin	▲	1
24	Roller frame	▲	1
	Loading roller kit	MH2LEB810	
25	Axle pin	▲, ††	1
26	Roll pin	▲	1
27	Washer	▲	2
28	Bearing	▲	2
29	Loading roller (tandem)	▲	1
30	Fork frame	†	

(▲) Available as part of a kit only.

(Δ) Not shown.

(†) Not available.

(††) One axle pin per wheel.

# For Repair Parts, call 1-800-323-0620

24 hours a day – 365 days a year

Please provide following information:

- Model number
- Serial number (if any)
- Part description and number as shown in parts list

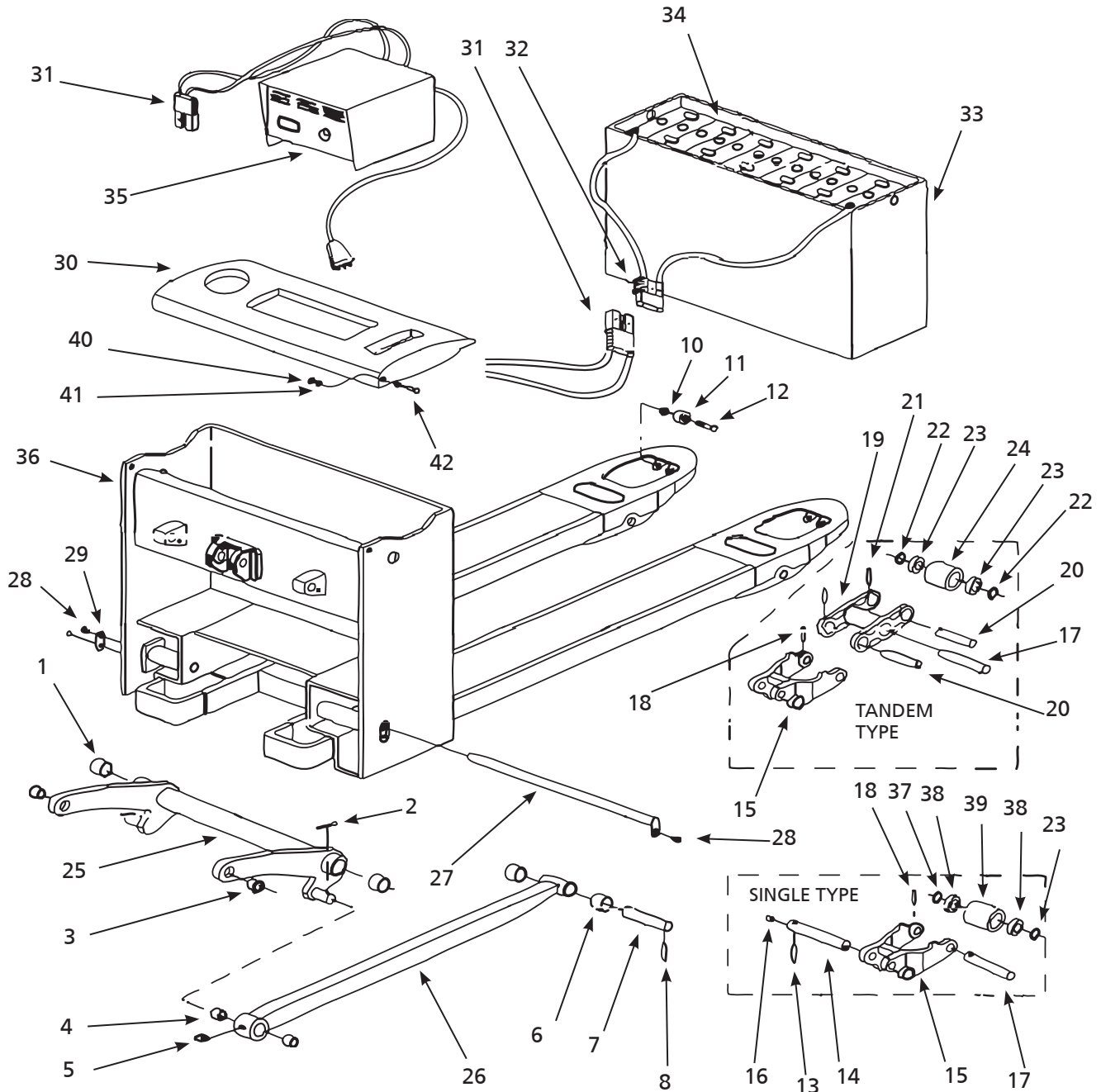


Figure 16 – Repair Parts Illustration for Pallet Truck Fork Frame (Model 2LEB9A)

## Repair Parts List for Pallet Truck Fork Frame

Reference Number	Description	Part Number	Quantity
	Rocker arm bushing kit	MH2LEB802	
1	Bushing	▲	2
2	Split pin	▲	2
3	Shoulder bushing	▲	2
	Push rod bushing kit	MH2LEB803	
4	Bushing	▲	2
5	Grease cup	▲	1
	Push rod pin kit	MH2LEB806	
6	Bushing	▲	2
7	Shaft	▲	1
8	Roll pin	▲	1
9	Grease fitting	▲, Δ	2
	Entry roller kit	MH2LEB807	
10	Locking nut	▲	1
11	Entry roller	▲	1
12	Bolt	▲	1
	Roller frame kit	MH2LEB808	
13	Roll pin	▲	1
14	Pivot pin	▲	1
15	Roller frame	▲	1
16	Grease fitting	▲	1
	Tandem roller frame kit	MH2LEB809	
17	Pivot pin	▲	1
18	Roll pin	▲	1
19	Roller frame	▲	1
	Loading roller kit	MH2LEB810	
20	Axle pin	▲, ††	1
21	Roll pin	▲	1
22	Washer	▲	2
23	Bearing	▲	2
24	Loading roller (tandem)	▲	1
25	Rocker arm	MH2LEB901	1
26	Push rod	MH2LEB902	1
	Rocker arm shaft kit	MH2LEB903	
27	Rocker arm shaft	▲	1
28	Screw	▲	3
29	Bracket	▲	1
30	Battery cover	MH2LEB904	1
	Battery kit	MH5RTC223G	
32	Plug (female)	▲	1
33	Battery box	▲	1
34	Battery 24V/210Ah	▲	1
	Charger kit	MH5RTC222G	
31	Plug (male)	▲	1
35	Battery charger, AC110V/30A	▲	1
36	Fork frame	†	
37	Washer (for single type)	†	
38	Bearing (for single type)	†	
39	Loading roller (for single type)	†	
40	Lock nut	†	
41	Washer	†	
42	Screw	†	

(▲) Available as part of a kit only.

(Δ) Not shown.

(†) Not available.

(††) One axle pin per wheel.

# For Repair Parts, call 1-800-323-0620

24 hours a day – 365 days a year

Please provide following information:

- Model number
- Serial number (if any)
- Part description and number as shown in parts list

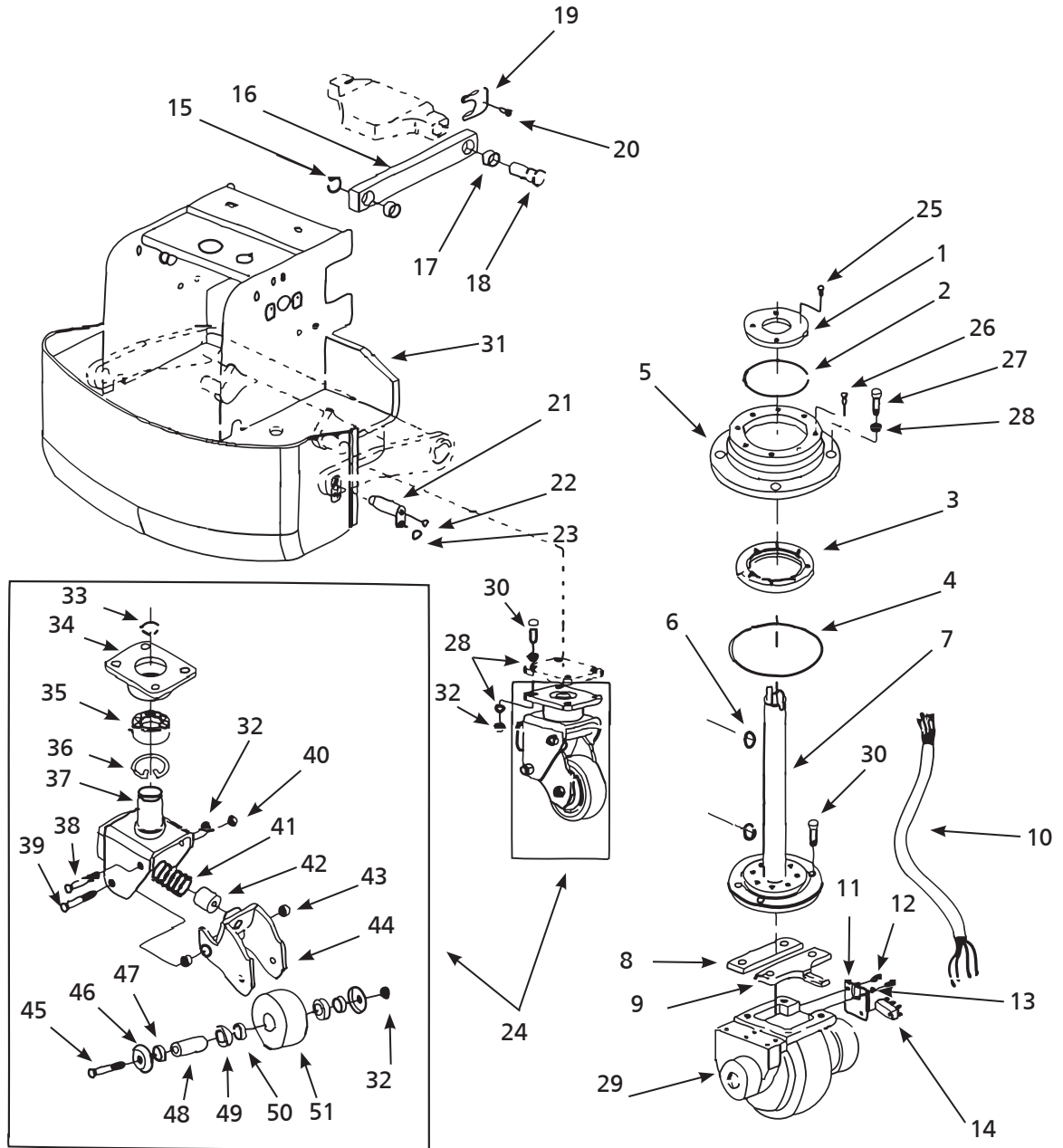


Figure 17 – Repair Parts Illustration for Pallet Truck Electric Compartment (Model 2LEB8A)

## Repair Parts List for Pallet Truck Electric Compartment

Reference Number	Description	Part Number	Quantity
1	Bearing cover	MH2LEB811	1
	Bearing kit	MH2LEB812	
2	O-ring	▲	1
3	Bearing	▲	1
4	O-ring	▲	1
5	Bearing seat	MH2LEB813	1
6	Protective sleeve	MH2LEB814	1
7	Shaft	MH2LEB815	1
	Plate kit	MH2LEB816	
8	Linking plate	▲	1
9	Baffle	▲	1
10	Cable	MH2LEB817	1
	Switch kit	MH2LEB818	
11	Plate	▲	1
12	Screw	▲	2
13	Washer	▲	2
14	Pole	▲	1
	Linking plate kit	MH2LEB819	
15	Snap ring	▲	1
16	Linking plate	▲	1
17	Bushing	▲	2
18	Shaft	▲	1
19	Locking board	▲	1
20	Screw	▲	1
	Pivot kit	MH2LEB820	
21	Pivot pin	▲	1
22	Screw	▲	1
23	Screw	▲	1
24	Swivel caster	MH2LEB821	1
25	Screw	†	
26	Screw	†	
27	Screw	†	
28	Elastic washer	†	
29	Drive wheel kit (See Page 46-47)	MH2LEB888G	1
30	Screw	†	
31	Box body	†	
32	Locking nut	†	
33	Retaining ring	†	
34	Interconnects	†	
35	Bearing	†	
36	Snap ring	†	
37	Steering wheel frame	†	
38	Bolt	†	
39	Bolt	†	
40	Locking nut	†	
41	Spring	†	
42	Spring	†	
43	Bushing	†	
44	Rotating arm	†	
45	Bolt	†	
46	Dust cover	†	
47	Washer	†	
48	Axle	†	
49	Bearing	†	
50	Washer	†	
51	Steering wheel	†	

(▲) Available as part of a kit only.

(†) Not available.

# For Repair Parts, call 1-800-323-0620

24 hours a day – 365 days a year

Please provide following information:

- Model number
- Serial number (if any)
- Part description and number as shown in parts list

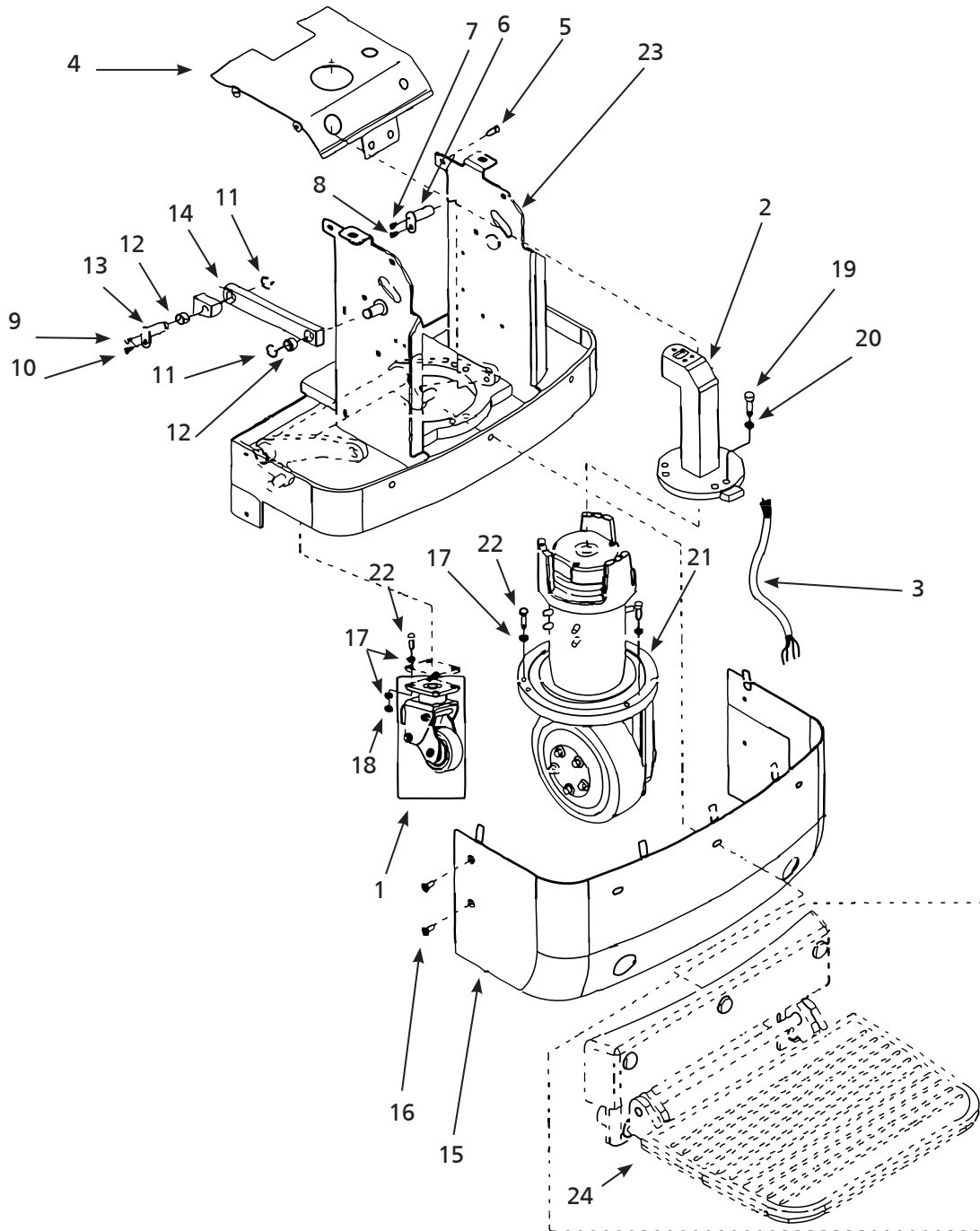


Figure 18 – Repair Parts Illustration for Pallet Truck Electric Compartment (Model 2LEB9A)

## Repair Parts List for Pallet Truck Electric Compartment

Reference Number	Description	Part Number	Quantity
1	Swivel caster	MH2LEB821	1
2	Handle holder	MH2LEB910	1
3	Cable	MH2LEB911	1
	Control cover kit	MH2LEB912	
4	Control cover	▲	1
5	Screw	▲	4
	Pivot kit	MH2LEB913	
6	Pivot pin	▲	1
7	Screw	▲	1
8	Screw	▲	1
	Linking plate kit	MH2LEB914	
9	Screw	▲	1
10	Screw	▲	1
11	Snap ring	▲	2
12	Bushing	▲	2
13	Pivot	▲	1
14	Linking plate	▲	1
	Outer covering kit	MH2LEB915	
15	Outer covering	▲	1
16	Screw	▲	4
17	Elastic washer	†	
18	Locking nut	†	
19	Screw	†	
20	Elastic washer	†	
21	See drive wheel breakout	†	
22	Bolt	†	
23	Box body (685 mm wide)	†	
24	See platform breakout	†	

(▲) Available as part of a kit only.

(†) Not available.

# For Repair Parts, call 1-800-323-0620

24 hours a day – 365 days a year

Please provide following information:

- Model number
- Serial number (if any)
- Part description and number as shown in parts list

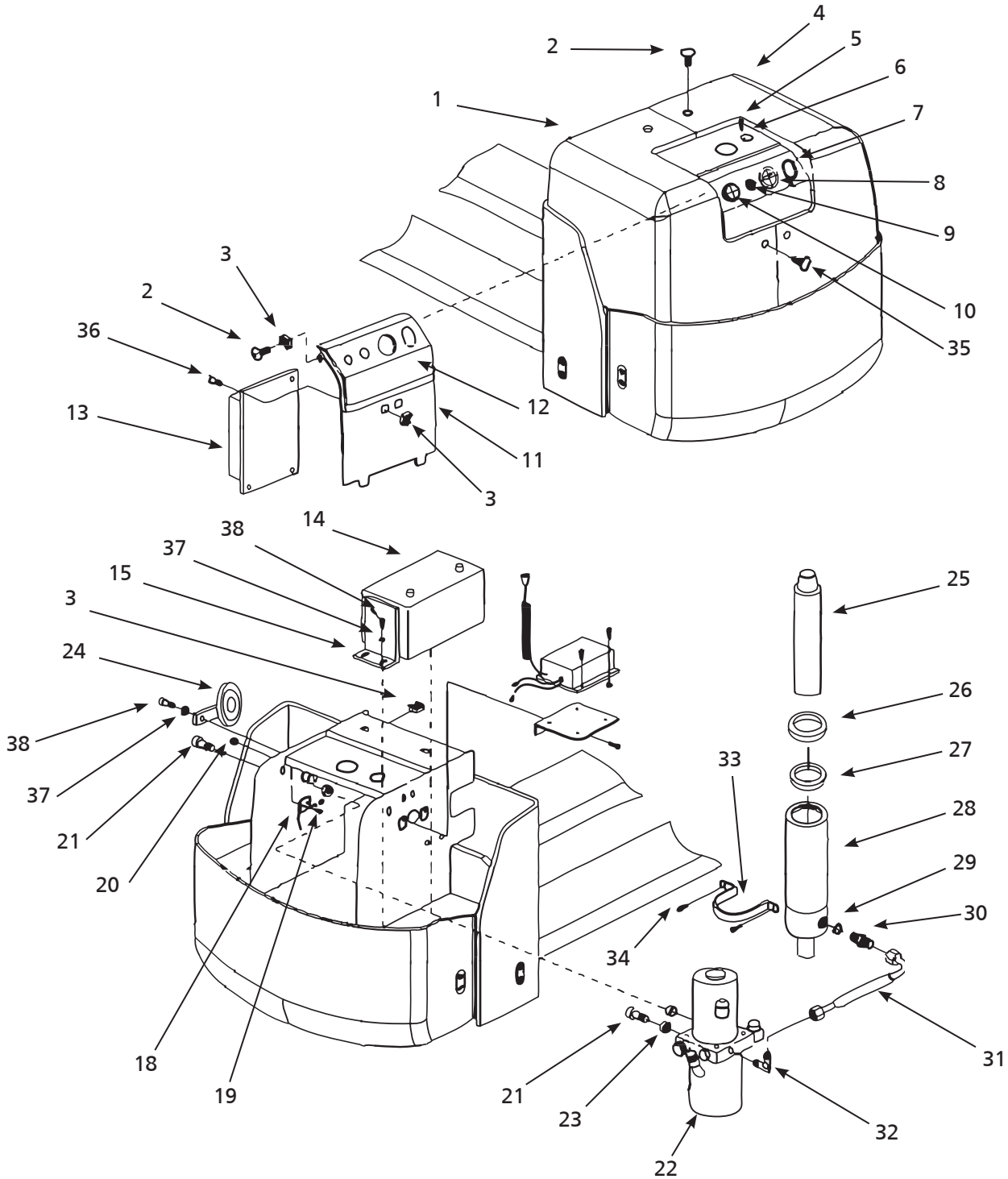


Figure 19 – Repair Parts Illustration for Pallet Truck Hydraulic and Electric Components (Model 2LEB8A)

## Repair Parts List for Pallet Truck Hydraulic and Electric Components

Reference Number	Description	Part Number	Quantity
1	Cover, left side	MH2LEB822	1
	Nut/Screw kit	MH2LEB823	
2	Screw	▲	2
3	Nut	▲	2
4	Cover, right side	MH2LEB824	1
	Plug kit	MH2LEB825	
5	Screw	▲	2
6	Plug	▲	1
7	Protective sleeve	MH2LEB826	1
8	Battery indicator, CURTIS 803	MH2LEB881G	1
9	Power key, LKS-101A	MH2LEB882G	1
10	Emergency switch, ZDK31-250	MH2LEB883G	1
11	Bracket	MH2LEB830	1
12	Cover	MH2LEB831	1
13	Controller Assy. (See next page)	+	1
14	Battery	MH2LEB833	2
15	Battery mount bracket	MH2LEB834	2
	Switch kit	MH2LEB836	
18	Switch	▲	1
19	Screw	▲	2
20	Nut	▲	2
	Pump kit	MH2LEB837	
21	Bolt	▲	2
22	Pump	▲	1
23	Bushing	▲	2
24	Horn	MH2LEB838	1
25	Piston rod	MH2LEB839	1
	Ring seal kit	MH2LEB840	
26	Dust ring	▲	1
27	O-ring	▲	1
28	Cylinder body	MH2LEB841	1
	Hydraulic linkage kit	MH2LEB842	
29	Seal washer	▲	1
30	Joint	▲	1
31	Pipe	▲	1
32	Joint	▲	1
	Bracket kit	MH2LEB843	
33	Bracket	▲	1
34	Screw	▲	2
35	Screw	†	
36	Screw	†	
37	Washer	†	
38	Screw	†	

(▲) Available as part of a kit only.

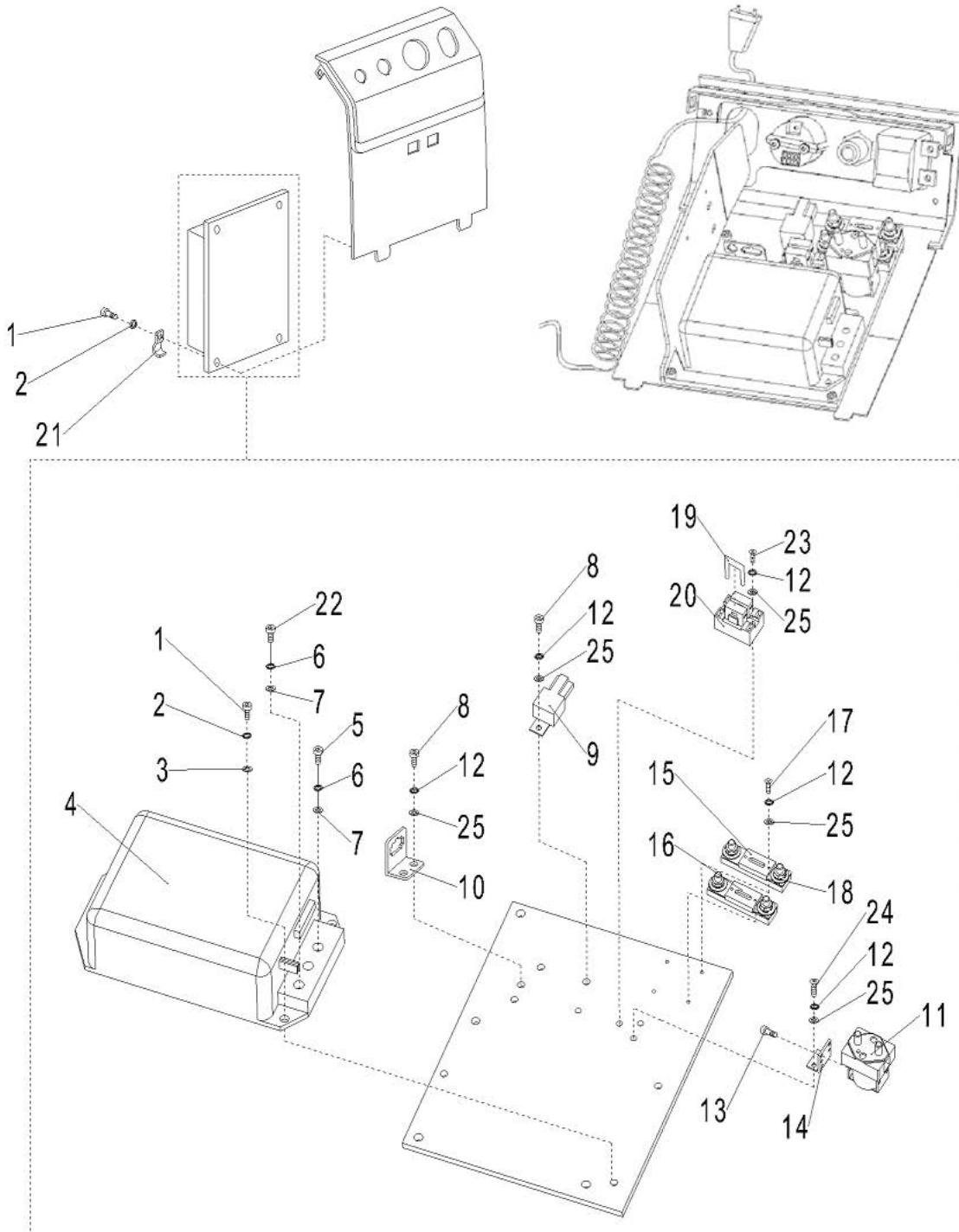
(†) Not available.

**For Repair Parts, call 1-800-323-0620**

**24 hours a day – 365 days a year**

Please provide following information:

- Model number
- Serial number (if any)
- Part description and number as shown in parts list



**Figure 20 – Repair Parts Illustration for Pallet Truck Controller Assy. (Model 2LEB8A)**

## Repair Parts List for Pallet Truck Controller Assy.(2LEB8)

Reference Number	Description	Part Number	Quantity
1	Screw, M6x16	++	7
2	Elastic washer, 6	++	7
3	Flat washer, 6	++	3
4	Controller, CURTIS 1243C-4381	MH2LEB832	1
5	Screw, M8x16	++	1
6	Elastic washer, 8	++	3
7	Flat washer, 8	++	3
8	Screw, M4x10	++	3
9	Relay	MH2LEB876G	1
10	Fixxing plat for plug	+	1
11	Main relay C100/120 DC24V	MH5RTA720G	1
12	Elastic washer, 4	++	11
13	Screw, M4x5	++	2
14	Fixxing plate for main relay	+	1
15	Fuse, 60A	MH2LEB871G	1
16	Fuse, 80A	MH2LEB870G	1
17	Screw, M4x18	++	4
18	Fuse seat	+	2
19	Fuse, 10A	MH5RTA716G	1
20	Fuse seat	+	1
21	Fixxing plate for cable	+	1
22	Screw, M8x12	++	2
23	Screw, M4x30	++	2
24	Screw, M4x12	++	2
25	Flat washer, 4	++	11

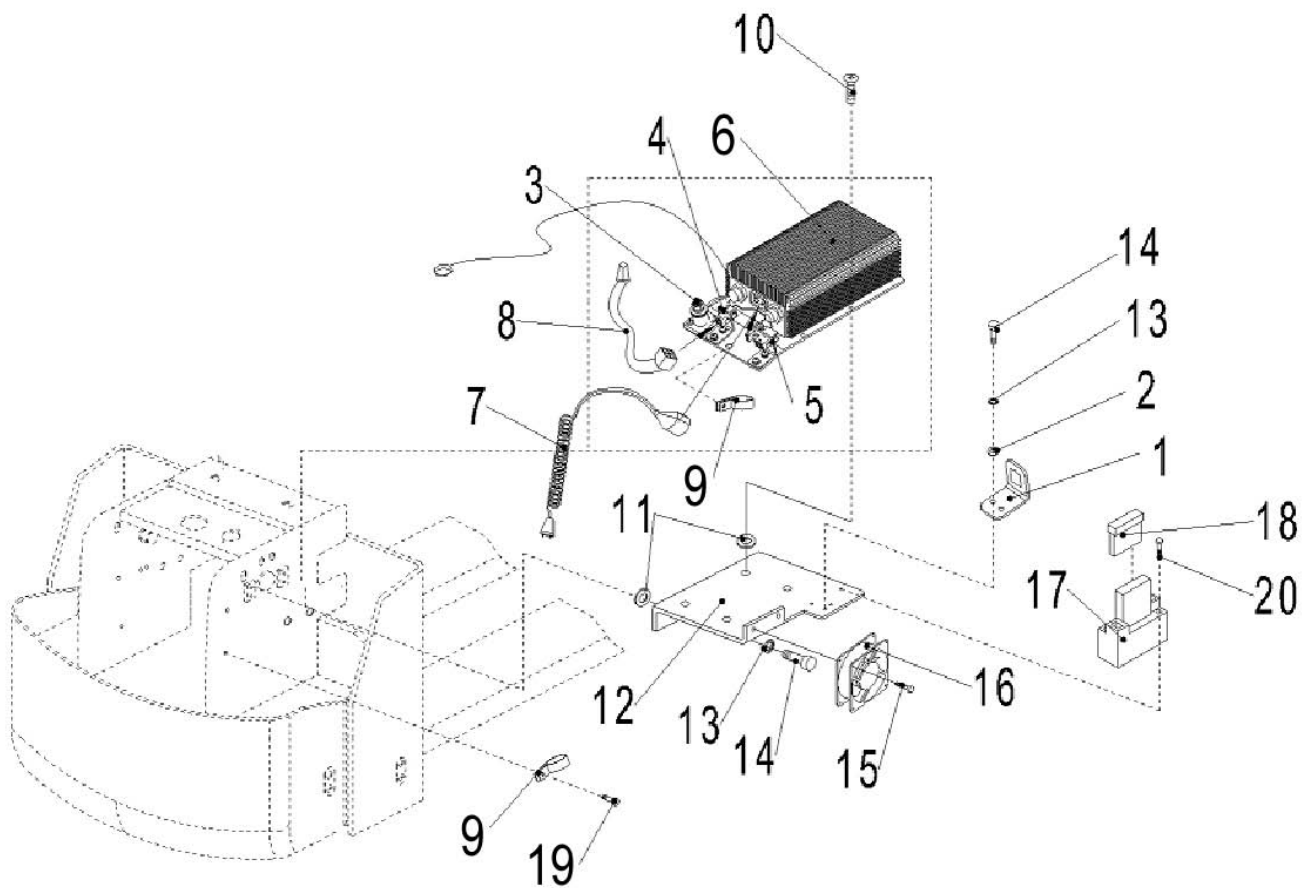
(†) Not available.

(++) Common hardware, not offered as a replacement part.

**For Repair Parts, call 1-800-323-0620****24 hours a day – 365 days a year**

Please provide following information:

- Model number
- Serial number (if any)
- Part description and number as shown in parts list

**Figure 21 – Repair Parts Illustration for Pallet Truck Charger Assy. (Model 2LEB8A)**

## Repair Parts List for Pallet Truck Charger Assy.(2LEB8)

Reference Number	Description	Part Number	Quantity
1	Fixing plate for cable	+	1
2	Flat washer, 5	++	2
3	Charger kit	MH2LEB877G	
4	Binding post, M8	▲	1
4	Fixing plate	▲	1
5	Fixing plate for plug	▲	1
6	Charger, AC115V/8A	▲	1
7	Spring line cable	MH2LEB878G	1
8	Charging indicator	MH2LEB879G	1
9	R type clamp	+	2
10	Screw, M4x8	++	4
11	Rubber washer	+	8
12	Bracket for charger	+	1
13	Elastic washer, 5	++	6
14	Screw, M5x12	++	6
15	Screw, M4x30	++	4
16	Fan, ADDA DC12V	MH2LEB880G	1
17	Seat for fuse	+	1
18	Fuse, 1A	MH2LEB872G	1
19	Screw, M4x8	++	1
20	Screw, M3x25	++	2

(▲) Available as part of a kit only.

(+) Not available.

(++) Common hardware, not offered as a replacement part.

**For Repair Parts, call 1-800-323-0620**

**24 hours a day – 365 days a year**

Please provide following information:

- Model number
- Serial number (if any)
- Part description and number as shown in parts list

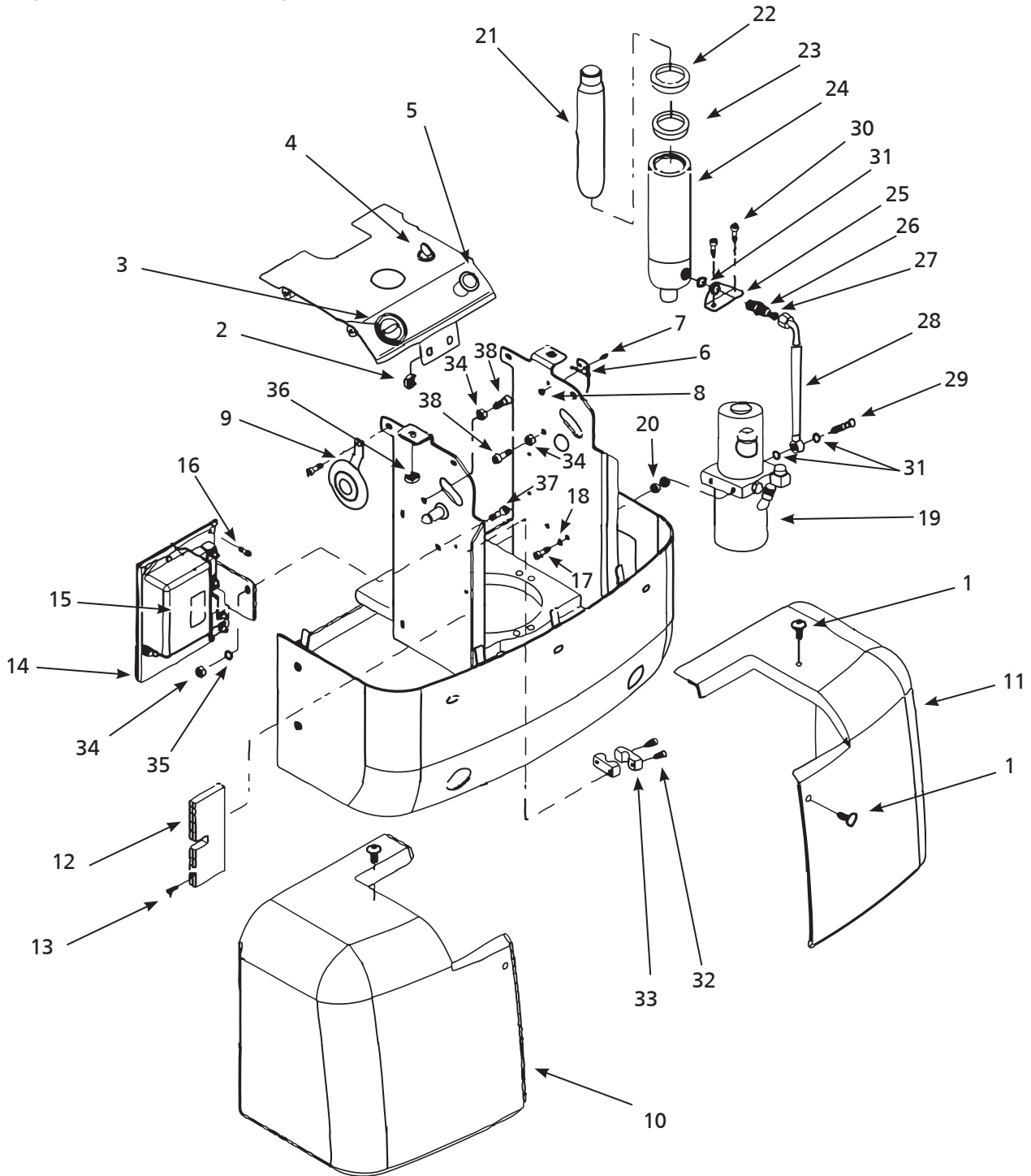


Figure 22 – Repair Parts Illustration for Pallet Truck Hydraulic and Electric Components (Model 2LEB9A)

# Repair Parts List for Pallet Truck Hydraulic and Electric Components

Reference Number	Description	Part Number	Quantity
	Nut/Screw kit	MH2LEB823	
1	Screw	▲	1
2	Nut	▲	1
3	Battery Indicator CURTIS 803	MH2LEB881G	1
4	Power key, LKS-101A	MH2LEB882G	1
5	Emergency switch, ZDK31-250	MH2LEB883G	1
	Switch kit	MH2LEB836	
6	Switch	▲	1
7	Screw	▲	2
8	Nut	▲	2
9	Horn	MH2LEB838	1
10	Cover, left side	MH2LEB916	1
11	Cover, right side	MH2LEB917	1
	Connection slot kit	MH2LEB918	
12	Connection slot	▲	1
13	Screw	▲	2
14	Controller bracket	+	1
15	Controller Assy. (See next page)	+	1
16	Screw, M8x16	+	4
	Pump kit	MH2LEB921	
17	Bolt	▲	2
18	Washer	▲	2
19	Pump	▲	1
20	Washer	▲	4
21	Piston rod	MH2LEB922	1
	Ring seal kit	MH2LEB923	
22	Dust ring	▲	1
23	O-ring	▲	1
24	Cylinder body	MH2LEB924	1
	Hydraulic linkage kit	MH2LEB925	
25	Cylinder mounting bracket	▲	1
26	Joint	▲	1
27	O-ring	▲	1
28	Pipe	▲	1
29	Bolt	▲	1
30	Screw	▲	2
31	Seal washer	▲	3
	Cable holder kit	MH2LEB926	
32	Screw	▲	2
33	Clip for cable	▲	2
34	Nut	†	
35	Elastic washer	†	
36	Nut	†	
37	Bolt	†	
38	Screw	†	

(▲) Available as part of a kit only.

(†) Not available.

# For Repair Parts, call 1-800-323-0620

24 hours a day – 365 days a year

Please provide following information:

- Model number
- Serial number (if any)
- Part description and number as shown in parts list

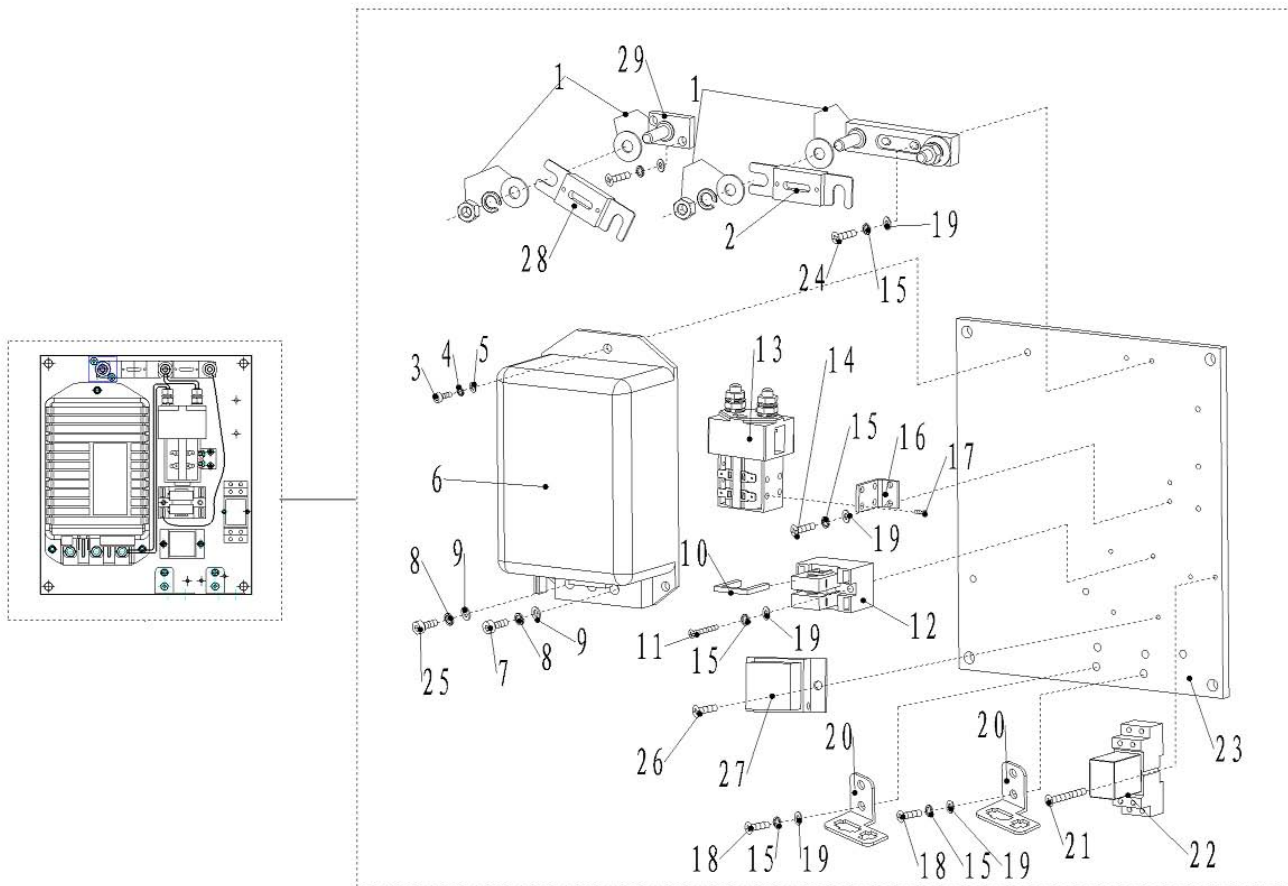


Figure 23– Repair Parts Illustration for Pallet Truck Controller Assy. (Model 2LEB9A)

## Repair Parts List for Pallet Truck Controller Assy. (2LEB9A)

Reference Number	Description	Part Number	Quantity
1	Fuse seat SYY	+	1
2	Fuse, 130A	MH5RTA715G	1
3	Screw, M6x16	++	3
4	Elastic washer, 6	++	3
5	Flat washer, 6	++	3
6	Controller, CURTIS 1243C-4381	MH2LEB920	1
7	Screw, M8x12	++	2
8	Elastic washer, 8	++	3
9	Flat washer, 8	++	3
10	Fuse, 10A	MH5RTA716G	1
11	Screw, M4x30	++	2
12	Fuse seat	+	1
13	Main relay C100/120 DC24V	MH5RTA720G	1
14	Screw, M4x12	++	4
15	Elastic washer, 4	++	12
16	Bracket for mail relay	+	1
17	Screw, M4x5	++	2
18	Screw, M4x10	++	4
19	Flat washer, 4	++	12
20	Fixxing plate for plug	+	2
21	Screw, M3x20	++	2
22	Relay ARL2F DC24V	MH5RTA719G	1
23	Al plate	+	1
24	Screw, M4x18	++	2
25	Screw, M8x16	++	1
26	Screw, M4x8	++	2
27	Module of Motor temperature	MH5RTA721G	1
28	Fuse, 80A	MH2LEB950G	1
29	Binding post, M8	+	1

(†) Not available.

(++) Common hardware, not offered as a replacement part.

# For Repair Parts, call 1-800-323-0620

24 hours a day – 365 days a year

Please provide following information:

- Model number
- Serial number (if any)
- Part description and number as shown in parts list

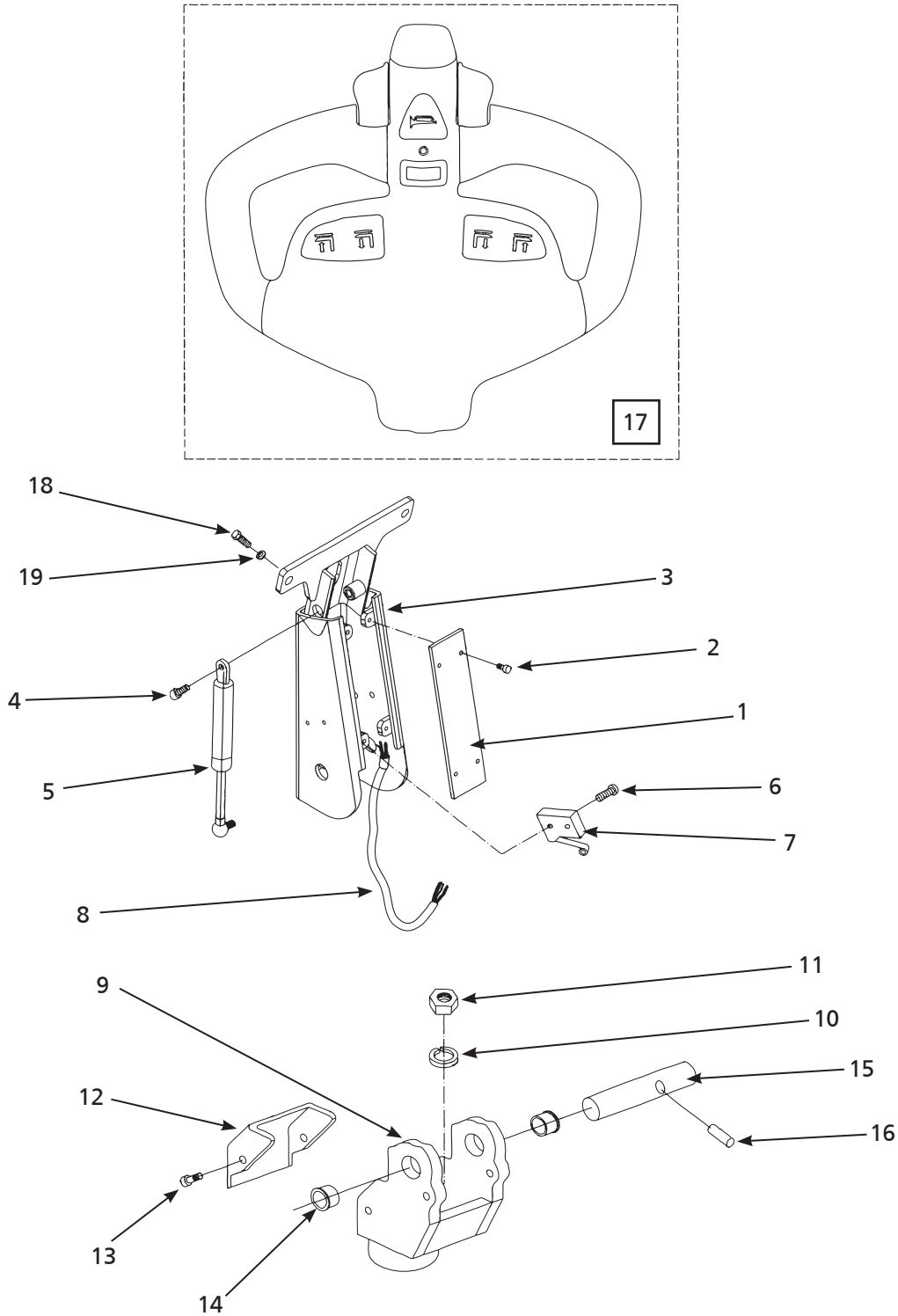


Figure 24 – Repair Parts Illustration for Pallet Truck Handle Assembly (Model 2LEB8A)

## Repair Parts List for Pallet Truck Handle Assembly

Reference Number	Description	Part Number	Quantity
	Handle cover kit	MH2LEB844	
1	Cover plate	▲	1
2	Screw	▲	1
3	Handle arm	MH2LEB845	1
	Air piston kit	MH2LEB846	
4	Screw	▲	1
5	Air piston	▲	1
	Switch kit	MH2LEB847	
6	Screw	▲	2
7	Switch	▲	1
8	Control cable	MH2LEB848	1
	Handle connector bracket kit	MH2LEB849	
9	Handle connector bracket	▲	1
10	Elastic washer	▲	2
11	Locking nut	▲	2
12	Cover	▲	1
13	Screw	▲	2
	Pivot pin kit	MH2LEB850	
14	Shoulder bushing	▲	2
15	Shaft	▲	1
16	Roll pin	▲	1
17	Handle kit	†	
18	Bolt	††	
19	Nylon washer	††	

(▲) Available as part of a kit only.

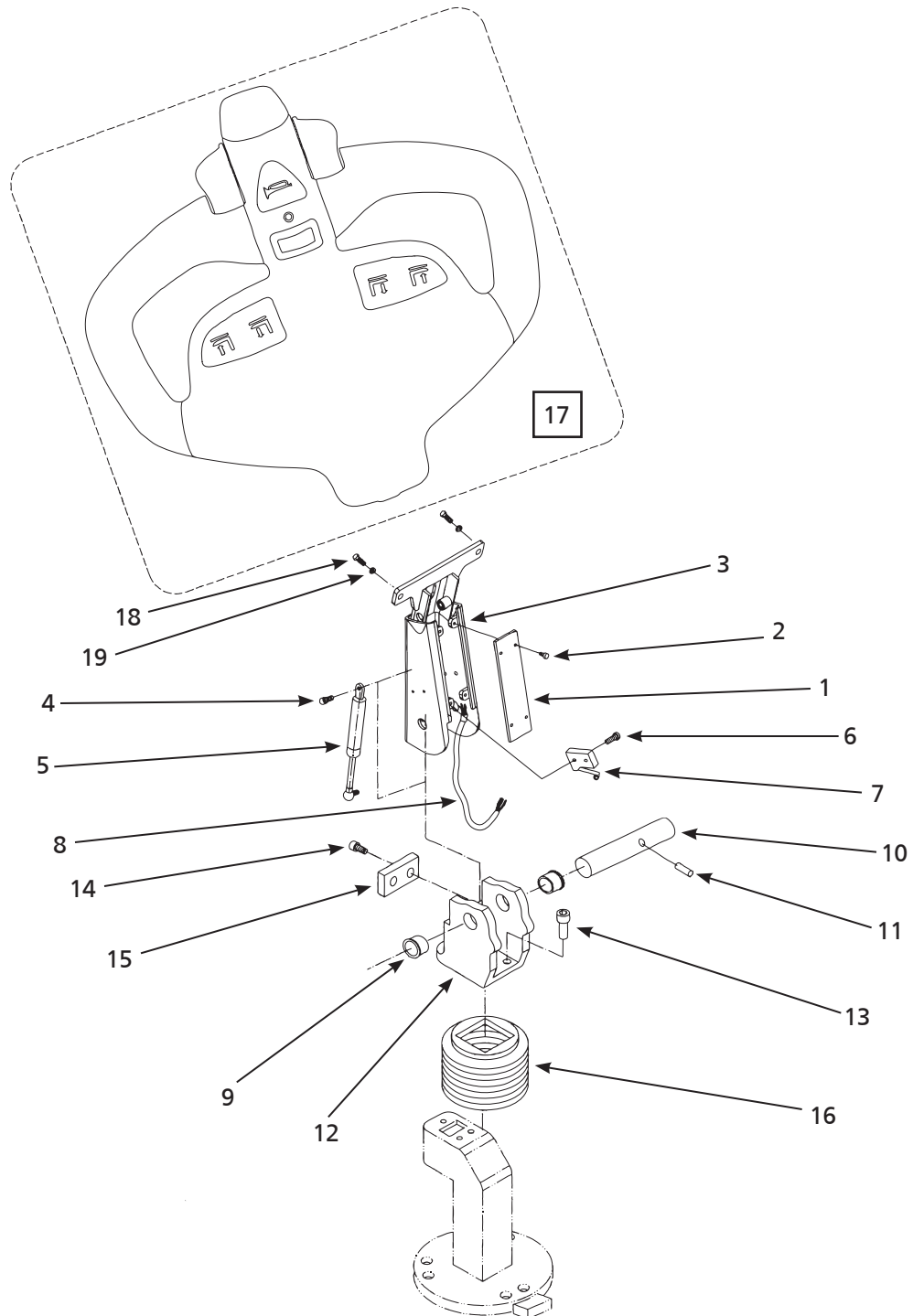
(†) Refer to control handle kit illustration and parts list on pages 38 and 39.

(††) Not available.

**For Repair Parts, call 1-800-323-0620****24 hours a day – 365 days a year**

Please provide following information:

- Model number
- Serial number (if any)
- Part description and number as shown in parts list

**Figure 25 – Repair Parts Illustration for Pallet Truck Handle Assembly (Model 2LEB9A)**

## Repair Parts List for Pallet Truck Handle Assembly

Reference Number	Description	Part Number	Quantity
	Handle cover kit	MH2LEB941	
1	Cover plate	▲	1
2	Screw	▲	1
3	Handle arm	MH2LEB942	1
	Air piston kit	MH2LEB846	
4	Screw	▲	1
5	Air piston	▲	1
	Switch kit	MH2LEB847	
6	Screw	▲	2
7	Switch	▲	1
8	Control cable	MH2LEB943	1
	Pivot pin kit	MH2LEB850	
9	Shoulder bushing	▲	2
10	Shaft	▲	1
11	Roll pin	▲	1
	Handle connector bracket kit	MH2LEB927	
12	Handle connector bracket	▲	1
13	Screw	▲	3
14	Screw	▲	2
15	Anti-vibration pad	▲	1
16	Dust cover	MH2LEB928	1
17	Handle kit	†	
18	Bolt	††	
19	Nylon washer	††	

(▲) Available as part of a kit only.

(†) Refer to control handle kit illustration and parts list on pages 38 and 39.

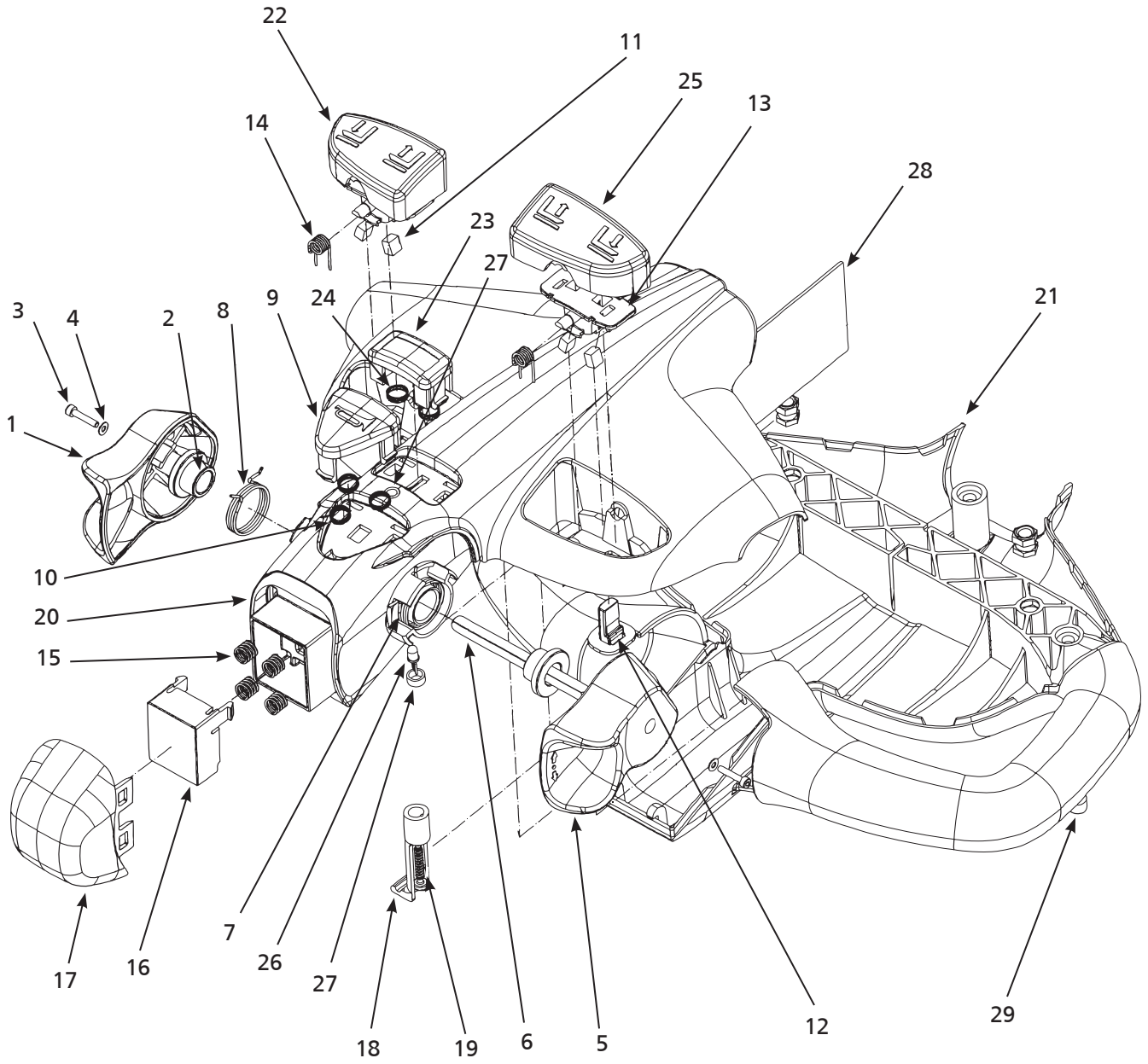
(††) Not available.

**For Repair Parts, call 1-800-323-0620**

**24 hours a day – 365 days a year**

Please provide following information:

- Model number
- Serial number (if any)
- Part description and number as shown in parts list



**Figure 26 – Repair Parts Illustration for Pallet Truck Control Handle**

## Repair Parts List for Pallet Truck Control Handle

Reference Number	Description	Part Number	Quantity
	<b>Butterfly knob kit</b>	<b>MH2LEB851</b>	
1	Butterfly knob left	▲	1
2	Bearing for camshaft	▲	2
3	Screw M3	▲	2
4	Washer	▲	2
5	Butterfly knob right	▲	1
6	Shaft	▲	1
7	Spring right hand throttle torsion	▲	1
8	Spring left hand throttle torsion	▲	1
	<b>Horn button kit</b>	<b>MH2LEB852</b>	
9	Horn button	▲	1
10	Spring	▲	3
	<b>Seesaw switch kit</b>	<b>MH2LEB853</b>	
11	Magnet	▲	4
12	Sensor for rocker lever	▲	2
13	Magnet holder for seesaw	▲	2
14	Hinge spring	▲	2
	<b>Emergency stop button kit</b>	<b>MH2LEB854</b>	
15	Spring	▲	4
16	Contact base	▲	1
17	Switch cover	▲	1
	<b>PCB clip kit</b>	<b>MH2LEB855</b>	
18	Printed circuit board clip	▲	1
19	Screw M4x25	▲	1
20	Upper part	MH2LEB856	1
21	Lower part	MH2LEB857	1
22	Seesaw left	MH2LEB858	1
	<b>High/Low speed button kit</b>	<b>MH2LEB859</b>	
23	Option cover	▲	1
24	Spring	▲	2
25	Seesaw right	MH2LEB860	1
	<b>LED</b>	<b>MH2LEB861</b>	
26	LED bicolor	▲	1
27	Housing for LED two parts	▲	1
28	Printed circuit board	MH2LEB862	1
29	Screw	†	

(▲) Available as part of a kit only.

(†) Not available.

## For Repair Parts, call 1-800-323-0620

24 hours a day – 365 days a year

Please provide following information:

- Model number
- Serial number (if any)
- Part description and number as shown in parts list

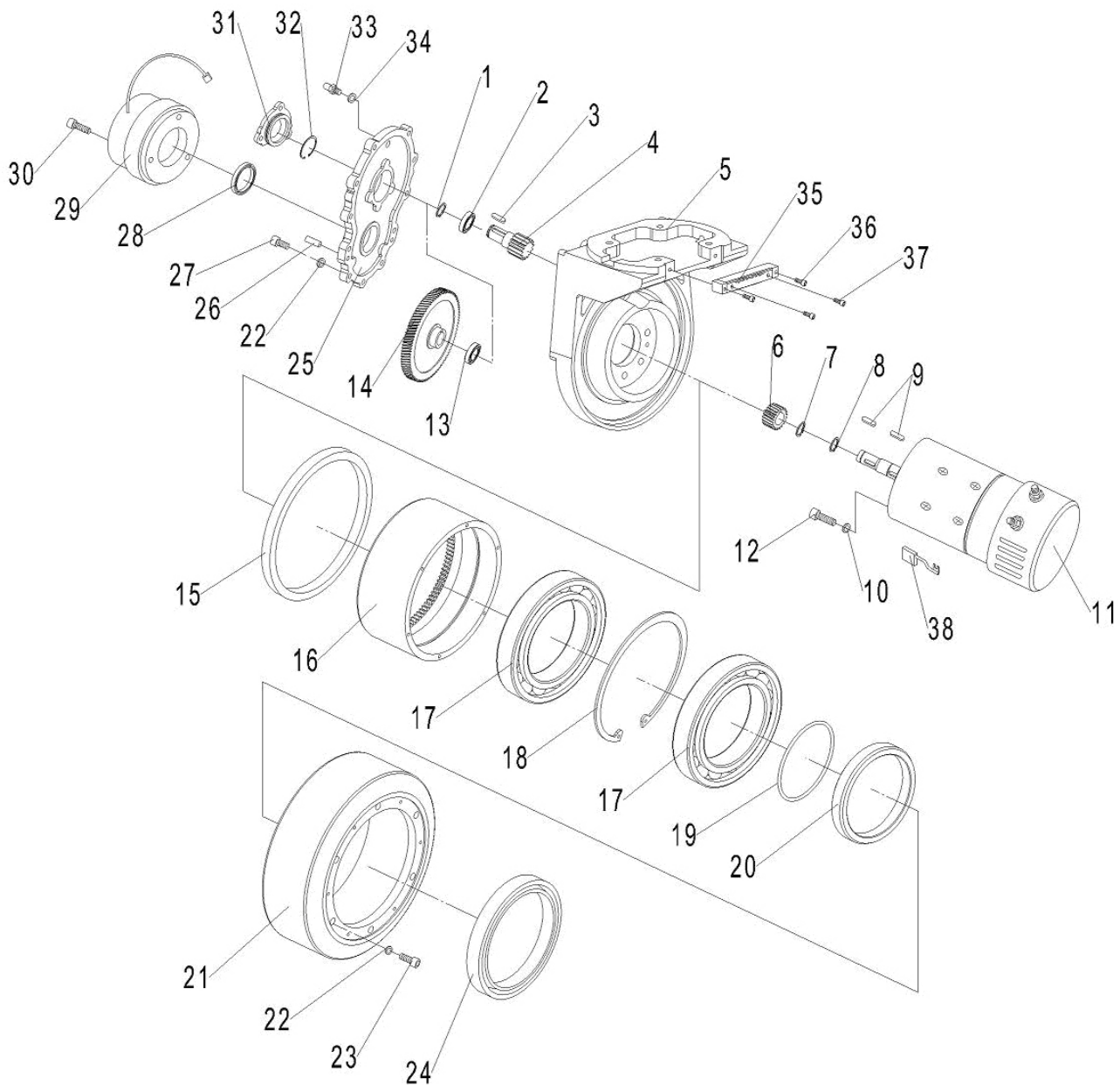


Figure 27 – Repair Parts Illustration for Pallet Truck Drive Wheel (Model 2LEB8A)

## Repair Parts List for Pallet Truck Drive Wheel

Reference Number	Description	Part Number	Quantity
1	Retaining ring, 20	+	1
2	Bearing, 6204	+	1
3	Key, A6x16	+	1
4	Axle with gear	+	1
5	Motor frame	+	1
6	Gear	+	1
7	Retaining ring, 15	+	1
8	Retaining ring, 17	+	1
9	Key, A5x15	+	1
10	Key , A5x15	+	1
11	Traction motor, DC24V	MH2LEB884G	1
12	Screw, M8x25	+	5
13	Bearing, 16006	+	1
14	Gear	+	1
15	Seal ring, 188x202x10	+	1
16	Inner gear	+	1
17	Bearing, 6022	+	1
18	Retaining ring, 170	+	1
19	O - ring, 110x3.55	+	1
20	Seat of seal ring	+	1
	Replacement wheel kit	MH2LEB885G	
21	Wheel	▲	1
22	Elastic washer, 6	▲	10
23	Screw, M6x20	▲	10
24	Seal ring, 148x165x12	+	1
25	Cover	+	1
26	Pin, B6x22	+	2
27	Screw, M6x16	+	11
28	Seal ring, 17x35x7	+	1
	Electromagnetic brake kit	MH2LEB886G	
29	Electromagnetic brake	▲	1
30	Screw, M5x45	▲	6
31	Cover	+	1
32	Retaining ring, 55	+	1
33	Screw, M10x1	+	1
34	Seal washer, 10	+	1
35	Fixxing plate for cable	+	1
36	Screw, M5x25	+	2
37	Screw, M5x10	+	2
38	Carbon brush for motor	MH2LEB887G	1

(▲) Available as part of a kit only.

(†) Not available.

# For Repair Parts, call 1-800-323-0620

24 hours a day – 365 days a year

Please provide following information:

- Model number
- Serial number (if any)
- Part description and number as shown in parts list

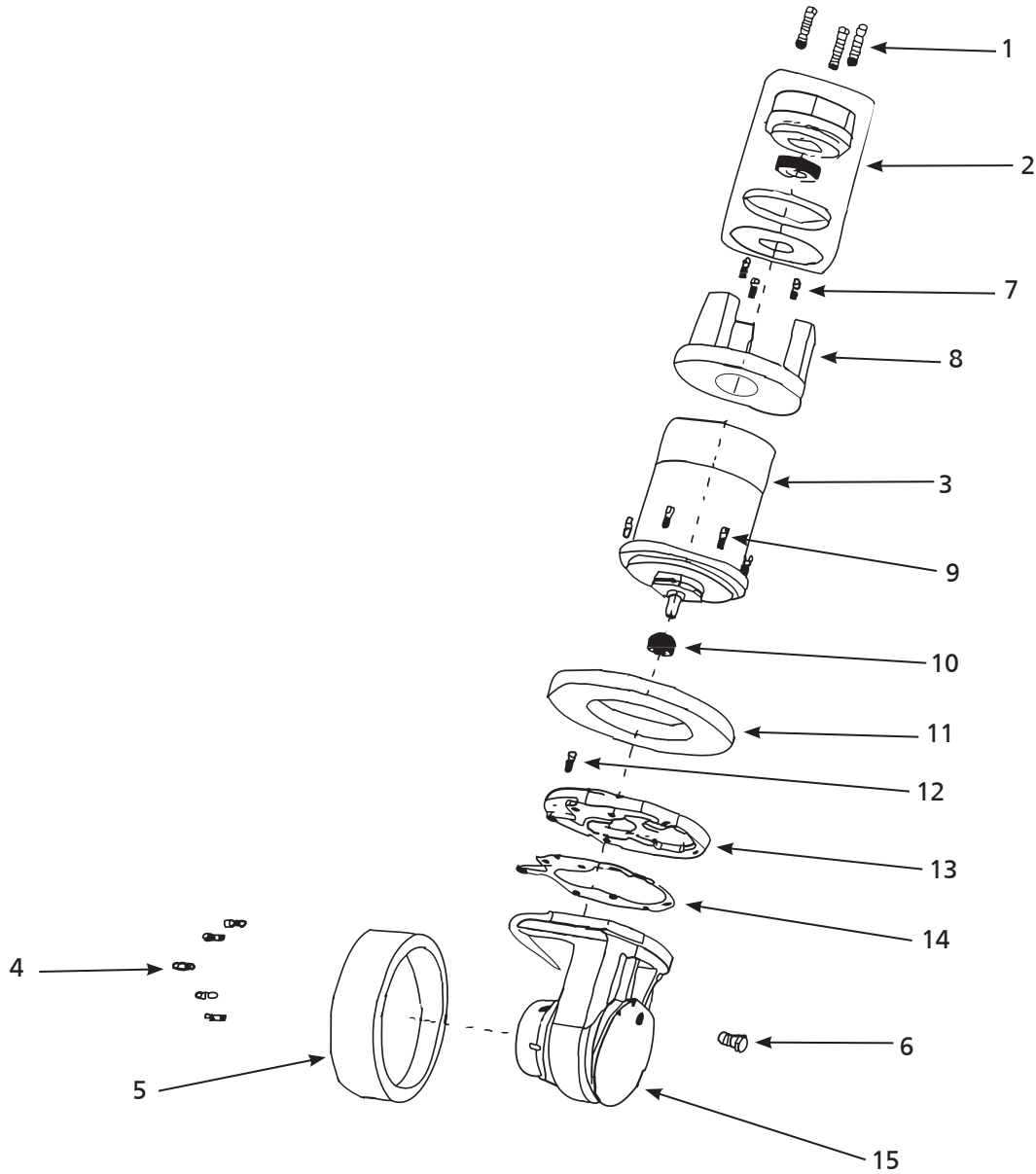


Figure 28 – Repair Parts Illustration for Pallet Truck Drive Wheel (Model 2LEB9A)

## Repair Parts List for Pallet Truck Drive Wheel

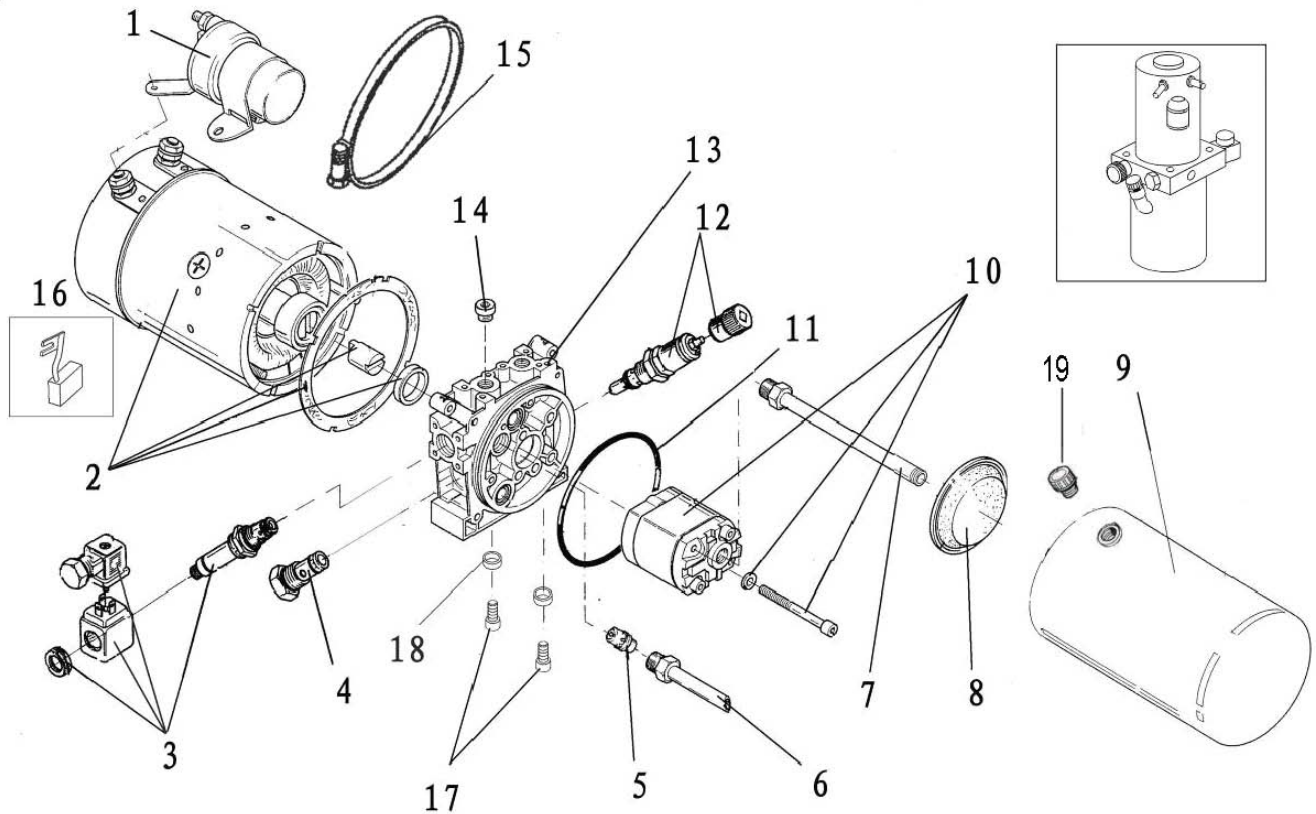
Reference Number	Description	Part Number	Quantity
	Brake kit	MH2LEB929	
1	Bolt	▲	3
2	Brake	▲	1
3	Traction motor, DC24V	MH2LEB930	1
	Replacement wheel kit	MH2LEB931	
4	Bolt	▲	5
5	Wheel	▲	1
6	Bolt for adding oil	MH2LEB932	1
	Motor gear kit	MH2LEB933	
7	Bolt	▲	3
8	Tiller bar plate	▲	1
9	Bolt	▲	8
10	Gear	▲	1
11	Holding bearing	▲	1
12	Bolt	▲	4
13	Upper cover	▲	1
14	Seal washer	▲	1
15	Gear box	▲	1

(▲) Available as part of a kit only.

**For Repair Parts, call 1-800-323-0620****24 hours a day – 365 days a year**

Please provide following information:

- Model number
- Serial number (if any)
- Part description and number as shown in parts list

**Figure 29 – Repair Parts Illustration for Pallet Truck Hydraulic Pump (Model 2LEB8A)**

## Repair Parts List for Pallet Truck Hydraulic Pump

Reference Number	Description	Part Number	Quantity
1	Lifting contactor	MH2LEB874G	1
2	Pump motor	MH2LEB873G	1
3	Electromagnetic valve	MH2LEB875G	1
4	Check valve	+	1
5	Flow control valve	+	1
6	Oil return pipe	+	1
7	Oil suction pipe	+	1
8	Filter	+	1
9	Oil tank	+	1
10	Gear pump	+	1
11	O - ring	+	1
12	Overflow valve	+	1
13	Valve plate	+	1
14	Screw	+	1
15	Hoop	+	1
16	Carbon brush kit	+	1
17	Screw, M10x25	+	2
18	Washer, 20x10.5x10	+	2
19	Tank cap	+	1

(†) Not available.

# For Repair Parts, call 1-800-323-0620

24 hours a day – 365 days a year

Please provide following information:

- Model number
- Serial number (if any)
- Part description and number as shown in parts list

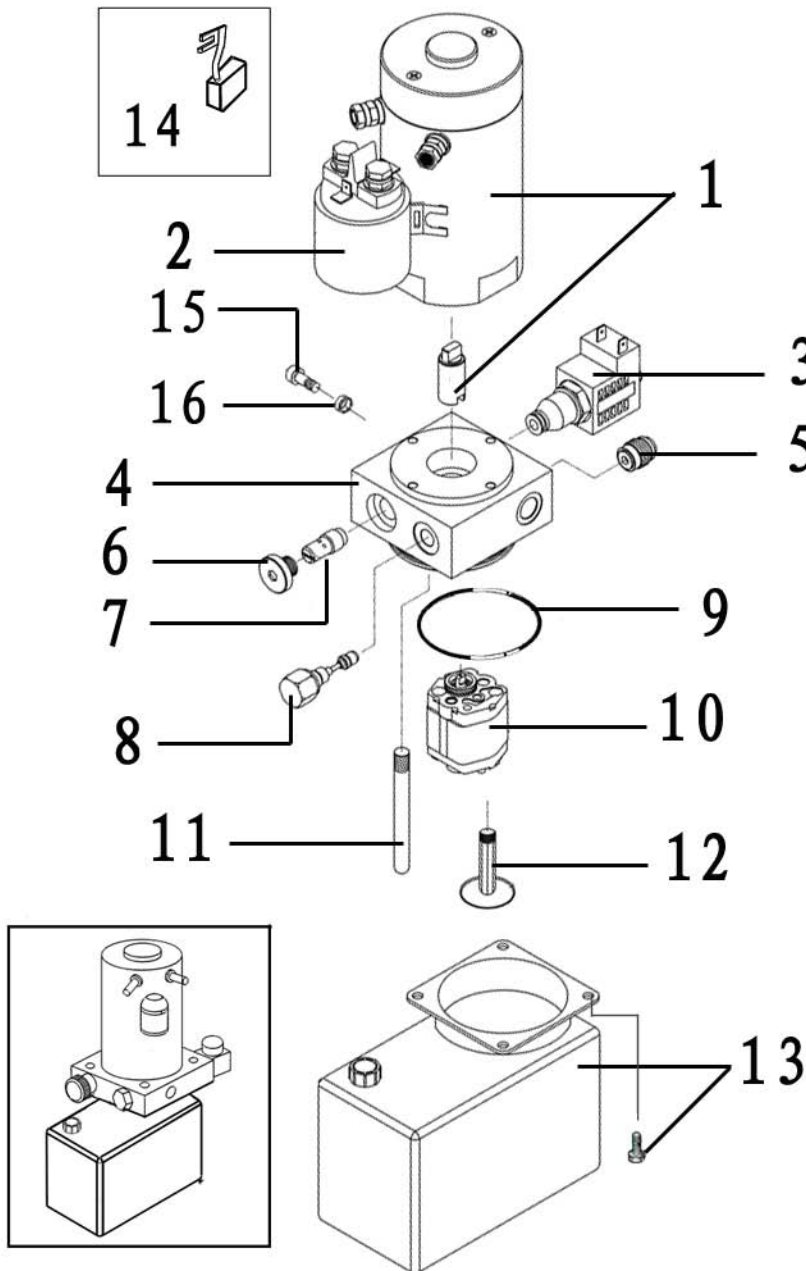


Figure 30 – Repair Parts Illustration for Pallet Truck Hydraulic Pump (Model 2LEB9A)

## Repair Parts List for Pallet Truck Hydraulic Pump

Reference Number	Description	Part Number	Quantity
1	Pump motor	MH2LEB951G	1
2	Lifting contactor	MH2LEB952G	1
3	Electromagnetic valve	MH2LEB953G	1
4	Valve plate	+	1
5	Check valve	+	1
6	Screw	+	1
7	Flow control valve	+	1
8	Overflow valve	+	1
9	O - ring	+	1
10	Gear pump	+	1
11	Oil return pipe	+	1
12	Oil suction pipe kit	+	1
13	Oil tank kit	+	1
14	Carbon brush kit	+	1
15	Bolt M8x40	+	2
16	Washer	+	2

(+) Available as part of a kit only.

## For Repair Parts, call 1-800-323-0620

24 hours a day – 365 days a year

Please provide following information:

- Model number
- Serial number (if any)
- Part description and number as shown in parts list

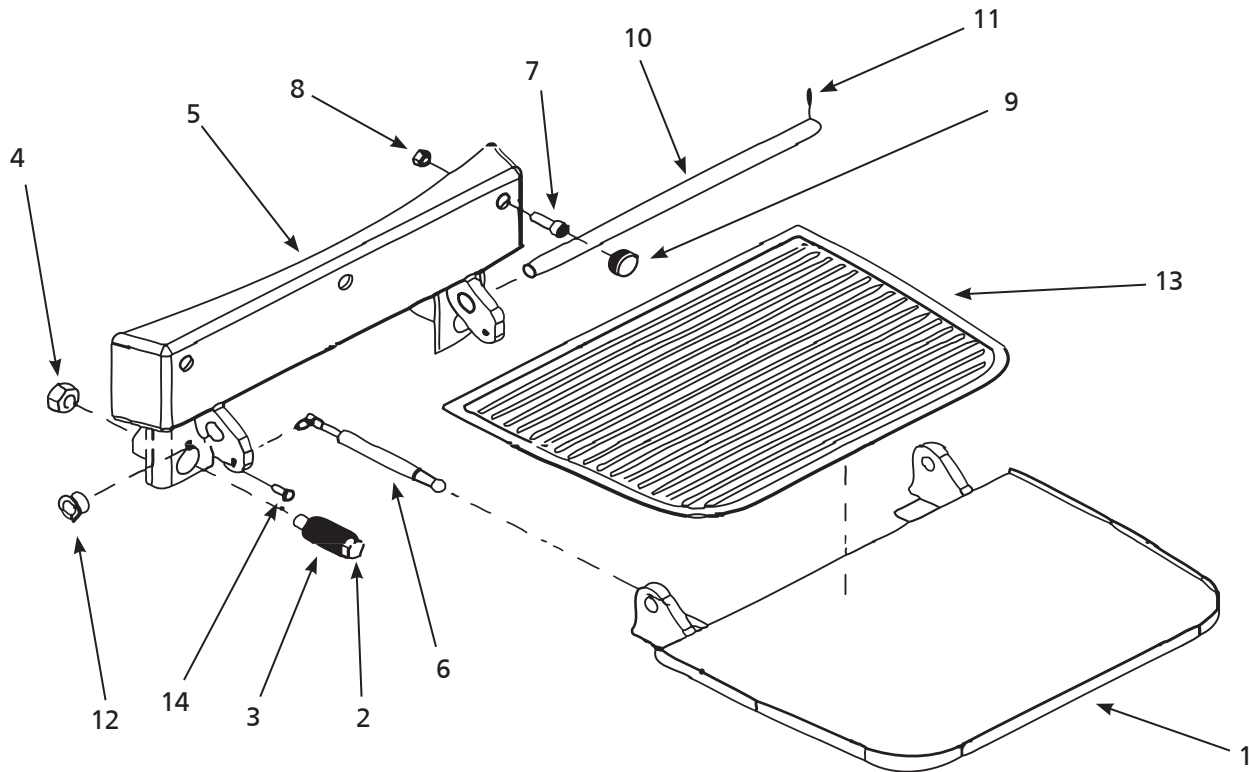


Figure 31 – Repair Parts Illustration for Pallet Truck Platform (Model 2LEB9A)

### Repair Parts List for Pallet Truck Platform

Reference Number	Description	Part Number	Quantity
1	Platform body	MH2LEB934	1
	Spring kit	MH2LEB935	
2	Bolt	▲	1
3	Spring	▲	1
4	Locking nut	▲	1
5	Platform linkage	MH2LEB936	1
6	Air piston	MH2LEB937	1
	Platform connecting hardware kit	MH2LEB938	
7	Bolt	▲	3
8	Nut	▲	3
9	Anti-vibration pad	▲	3
	Platform pivot rod kit	MH2LEB939	
10	Platform pivot rod	▲	1
11	Roll pin	▲	1
12	Bushing	▲	2
13	Rubber pad	MH2LEB940	1
14	Bolt	†	

(▲) Available as part of a kit only.

(†) Not available.