

®
Dayton



Wet/Dry Vacuums

COMMERCIAL/INDUSTRIAL USE

Models 22XJ56, 22XJ59, 22XJ60, 1VHG3A

®
Dayton

**PLEASE READ AND SAVE
THESE INSTRUCTIONS.
READ CAREFULLY
BEFORE ATTEMPTING
TO ASSEMBLE, INSTALL,
OPERATE OR MAINTAIN THE
PRODUCT DESCRIBED.**

**PROTECT YOURSELF AND
OTHERS BY OBSERVING ALL
SAFETY INFORMATION. FAILURE
TO COMPLY WITH INSTRUCTIONS
COULD RESULT IN PERSONAL
INJURY AND/OR PROPERTY
DAMAGE! RETAIN INSTRUCTIONS
FOR FUTURE REFERENCE.**

**PLEASE REFER TO BACK COVER
FOR INFORMATION REGARDING
DAYTON'S WARRANTY
AND OTHER IMPORTANT
INFORMATION.**

Model #: _____

Serial #: _____

Purch. Date: _____

*Form 5S6800 / Printed in U.S.A.
07985 Version 3 08/2013*

**© 2013 Dayton Electric Manufacturing Co.
All Rights Reserved**

IMPORTANT SAFETY INSTRUCTIONS



**ALWAYS WEAR
EYE PROTECTION**

⚠ DANGER



Never operate this unit when flammable materials or vapors are present because electrical devices produce arcs or sparks that can cause a fire or explosion. NEVER OPERATE UNATTENDED!

When using an electrical appliance, basic precautions should always be followed, including the following: **READ ALL INSTRUCTIONS BEFORE USING THIS APPLIANCE.**

⚠ WARNING *TO REDUCE THE RISK OF FIRE, ELECTRIC SHOCK, OR INJURY:*



1. Do not leave appliance when plugged in. Unplug from outlet when not in use and before servicing. Connect to a properly grounded outlet only. See Grounding Instructions.
2. Do not expose to rain—store indoors.
3. Do not allow to be used as a toy. Close attention is necessary when used by or near children.
4. Use only as described in this manual. Use only Manufacturer's recommended attachments.
5. Do not use with damaged cord or plug. If appliance is not working as it should, has been dropped, damaged, left outdoors or dropped into water, return it to a service center.
6. Do not: pull or carry by cord, use cord as a handle, close a door on cord or pull cord around sharp edges or corners. Do not run appliance over cord. Keep cord away from heated surfaces.
7. Do not unplug by pulling on cord. To unplug, grasp the plug, not the cord.
8. Do not handle plug or appliance with wet hands.
9. Do not put any object into openings. Do not use with any openings blocked; keep free of dust, lint, hair and anything that may reduce air flow.
10. Keep hair, loose clothing, fingers and all parts of body away from openings and moving parts.
11. Do not pick up anything that is burning or smoking, such as cigarettes, matches or hot ashes.
12. Do not use without dust bag and/or filters in place.
13. Turn off all controls before unplugging.
14. Use extra care when cleaning on stairs.
15. Do not use to pick up flammable or combustible liquids such as gasoline or use in areas where they may be present.
16. Do not use your cleaner as a sprayer of flammable liquids such as oil base paints, lacquers, household cleaners, etc.
17. Do not vacuum toxic, carcinogenic, combustible or other hazardous materials such as asbestos, arsenic, barium, beryllium, lead, pesticides, or other health endangering materials. Specially designed units are available for these purposes.
18. Do not pick up soot, cement, plaster or drywall dust without cartridge filter and collection filter bag in place. These are very fine particles that may pass through the foam and affect the performance of the motor or be exhausted back into the air. Additional collection filter bags are available.
19. Do not leave the cord lying on the floor once you have finished the cleaning job. It can become a tripping hazard.
20. Use special care when emptying heavily loaded tanks.
21. To avoid spontaneous combustion, empty tank after each use.
22. The operation of a utility vac can result in foreign objects being blown into eyes, which can result in eye damage. Always wear safety goggles when operating vacuum.
23. **STAY ALERT.** Watch what you are doing and use common sense. Do not use vacuum cleaner when you are tired, distracted or under the influence of drugs, alcohol, or medication causing diminished control.
24. **WARNING! Do NOT** use this vacuum cleaner to vacuum lead paint debris because this may disperse fine lead particles into the air. This vacuum cleaner is not intended for use under EPA Regulation 40 CFR Part 745 for lead paint material cleanup.

SAVE THESE INSTRUCTIONS

⚠ WARNING *DO NOT LEAVE VACUUM UNATTENDED WHEN IT IS PLUGGED IN AND/OR OPERATING. UNPLUG UNIT WHEN NOT IN USE.*

GROUNDING INSTRUCTIONS

This appliance must be grounded. If it should malfunction or breakdown, grounding provides a path of least resistance for electric current to reduce the risk of electric shock. This appliance is equipped with a cord having an equipment-grounding conductor and grounding plug. The plug must be inserted into an appropriate outlet that is properly installed and grounded in accordance with all local codes and ordinances.

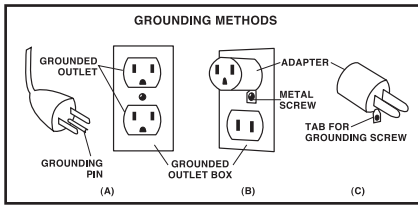
⚠ WARNING



IMPROPER CONNECTION OF THE EQUIPMENT-GROUNDING CONDUCTOR CAN RESULT IN A RISK OF ELECTRIC SHOCK. CHECK WITH A QUALIFIED ELECTRICIAN OR SERVICE PERSON IF YOU ARE IN DOUBT AS TO WHETHER THE OUTLET IS PROPERLY GROUNDED. DO NOT MODIFY THE PLUG PROVIDED WITH THE APPLIANCE – IF IT WILL NOT FIT THE OUTLET HAVE A PROPER OUTLET INSTALLED BY A QUALIFIED ELECTRICIAN.

This appliance is for use on a nominal 120-volt circuit, and has a grounded plug that looks like the plug illustrated in **sketch A**. A temporary adaptor that looks like the adaptor illustrated in **sketches B and C** may be used to connect this plug to a 2-pole receptacle as shown in **sketch B** if a properly grounded outlet is not available. The temporary adaptor should be used only until a properly grounded outlet (**sketch A**) can be installed by a qualified electrician. The green colored rigid ear, lug or the like extending from the adaptor must be connected to a permanent ground such as a properly grounded outlet box cover. Whenever the adaptor is used, it must be held in place by a metal screw.

GROUNDING INSTRUCTIONS (CONTINUED)



IN CANADA, THE USE OF A TEMPORARY ADAPTOR IS NOT PERMITTED BY THE CANADIAN ELECTRICAL CODE. Make sure that the appliance is connected to an outlet having the same configuration as the plug. No adapter should be used with this appliance.

⚠ WARNING *IF THE CORD IS DAMAGED, IT MUST BE REPLACED BY A SPECIAL CORD OR ASSEMBLY AVAILABLE FROM THE MANUFACTURER OR HIS AUTHORIZED SERVICE AGENT.*

EXTENSION CORDS

When using the appliance at a distance where an extension cord becomes necessary, a 3-conductor grounding cord of adequate size must be used for safety, and to prevent loss of power and overheating. Use the table to determine A.W.G. wire size required. To determine ampere rating of your vacuum, refer to nameplate located on motor housing/cover. Before using appliance, inspect power cord for loose or exposed wires and damaged insulation. Make any needed repairs or replacements before using your appliance. Use only three-wire outdoor extension cords which have three-prong grounding-type plugs and three-pole receptacles which accept the extension cord's plug.

Volts		Total length of cord in feet			
120V		25	50	100	150
Ampere Rating More Than	Not More Than	AWG			
0 - 6	6	18	16	16	14
6 - 10	10	18	16	14	12
10 - 12	12	16	16	14	12
12 - 16	16	14	12	Not recommended	

NOTE: STATIC SHOCKS ARE COMMON IN DRY AREAS OR WHEN THE RELATIVE HUMIDITY OF THE AIR IS LOW. THIS IS ONLY TEMPORARY AND DOES NOT AFFECT THE USE OF THE APPLIANCE. TO REDUCE THE FREQUENCY OF STATIC SHOCKS IN YOUR HOME, THE BEST REMEDY IS TO ADD MOISTURE TO THE AIR WITH A CONSOLE OR INSTALLED HUMIDIFIER.

SPECIFICATIONS

	22XJ56	22XJ59	22XJ60	1VHG3A
Tank Style	Stainless Steel	Stainless Steel	Stainless Steel	55 Gal. Vacuum Head Assembly
Tank Capacity	20 Gal. (75.7 liters)	12 Gal. (45.5 liters)	16 Gal. (60.5 liters)	N/A
Electrical Rating	120V, 60 Hz AC 12 Amps	120V, 60 Hz AC 12 Amps	120V, 60 Hz AC 12 Amps	120V, 60 Hz AC 12 Amps
Static Pressure	120" (304.8 cm)	120" (304.8 cm)	120" (304.8 cm)	125" (317.5 cm)
Air Movement	105 cfm (2.9 m ³ /min)	105 cfm (2.9 m ³ /min)	105 cfm (2.9 m ³ /min)	110 cfm (3.1 m ³ /min)
Certification	US LISTED	US LISTED	US LISTED	US LISTED

BEFORE YOU BEGIN



Tools Needed:

- Flathead screwdriver
- (2) 7/16" Wrench or socket
- Safety glasses
- (2) 1/2" open end wrench
- Hammer
- Socket set

UNPACKING

Unpack:

- Pull lid latches in an outward motion, remove tank cover and any accessories that may have been shipped in the tank.

Inspect:

- After unpacking the unit, carefully inspect for any damage that may have occurred during transit. Check for loose, missing or damaged parts. Shipping damage claims must be filed with the carrier.



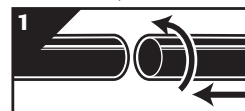
UNPACKING (CONTINUED)



See General Safety Instructions on Page 1 and 2, and Cautions and Warnings as shown.

ASSEMBLY INSTRUCTIONS

1. Attach caster system following the instructions and illustrations in this manual.
2. Attach side tank handles following the instructions and illustrations in this manual.
3. Before replacing tank cover, please refer to Dry Pick Up or Wet Pick Up Operation in this manual to ensure you have the proper filters installed for your cleaning operation.
4. Replace tank cover, and apply pressure with thumb to each latch until it snaps tightly in place. Make sure all lid latches are clamped securely.
5. Insert long machine hose end with locking-nut into inlet of tank and tighten. Do not over-tighten. For 1VHG3A, insert machine hose end into inlet on lid.
6. Attach the extension wands (**not standard on all models**) to the accessory end of the hose. Twist slightly to tighten the connection (**Figure 1**).
7. Attach one of the cleaning accessories (depending on your cleaning requirements) to the extension wands or accessory end of hose. Twist slightly to tighten the connection (**Figure 1**).
8. Plug the cord into the wall outlet. Your cleaner is ready for use.



I = ON, O =OFF

CASTER SYSTEM ASSEMBLY

Not all units are equipped with the same caster system. Follow the instructions, which apply to your specific unit. With Dolly (22XJ59)

Please refer to parts list in the maintenance/repair section for instructions.

With FlipNPour Dolly (Models 22XJ56, 22XJ60)

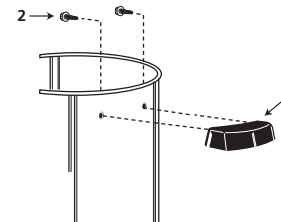
Please refer to parts list in the maintenance/repair section for instructions.

INSTALLATION INSTRUCTIONS

INSTALLING THE SIDE TANK HANDLES (Models 22XJ56, 22XJ59, 22XJ60) (Not standard with all models)

Attach side handles with screws provided.

Élément	Description
1	Poignée latérale du réservoir
2	Vis à tête hexagonale de 10 x ¾ po



OPERATION INSTRUCTIONS

NOTE: This series of long-life motor vacuums include Electronic Drive with a “Soft Start” feature. These vacuum motors take longer to come up to full speed than conventional vacuum motors. This is normal.

CAUTION DO NOT OPERATE THIS VACUUM ON A VARIABLE TRANSFORMER (VARIAC) OR ADJUSTABLE SPEED CONTROL. DAMAGE TO ELECTRONIC DRIVE MAY RESULT.

DANGER

This equipment incorporates parts such as switches, motors or the like that tend to produce arcs or sparks that can cause an explosion. Do not pick up flammable, combustible, or hot materials. Do not use around explosive liquids or vapors, as electrical devices produce arcs or sparks which can cause a fire or explosion - do not use at filling stations or anywhere gasoline is stored or dispensed.

DANGER NEVER OPERATE UNATTENDED!

AUTO RE-SETTING THERMAL MOTOR PROTECTIVE DEVICE

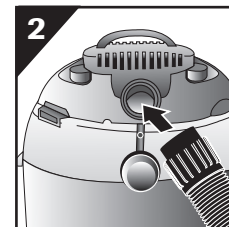
This feature protects the motor by shutting off the vacuum should a pre-set temperature be exceeded. This condition typically occurs due to a restriction in cooling air-flow to the motor. If activated:

1. Switch the vacuum OFF and unplug.
2. Check for full filter bag or clogged, dirty filter including doughnut-shaped foam pad (model 1VHG3A only) under top cover.
3. Check hose for blockage.
4. Clean or replace filters. Remove any obstruction from hose.
5. The Thermal Motor Protective Device will automatically re-set in approx. 15 min.
6. Plug back into receptacle, switch vacuum ON and continue cleaning.

BLOWER FEATURE

(Models 22XJ56, 22XJ59, 22XJ60)

This vacuum can be used as a powerful blower. To use your unit as a blower, unscrew blower port cover located on the backside of the motor housing (**Figure 2**). The blower port cover is equipped with a retaining strap to prevent loss of the port cover while blower is in use. Insert hose end with locking-nut into blower port of tank and tighten. For maximum blower performance attach concentrator nozzle to accessory end of hose (**not standard with all models**). Caution should be used when using a blower due to the powerful force of air when using certain attachments.



OPERATION INSTRUCTIONS (CONTINUED)

⚠ WARNING

ALWAYS WEAR EYE PROTECTION TO PREVENT ROCKS OR DEBRIS FROM BEING BLOWN OR RICOCHETING INTO THE EYES OR FACE WHICH CAN RESULT IN SERIOUS INJURY.

⚠ WARNING

ALWAYS DISCONNECT THE PLUG FROM THE WALL OUTLET BEFORE REMOVING THE TANK COVER.

⚠ CAUTION

Keep Filters Clean

The efficiency of these vacuum cleaners is largely dependent on the filter.

A clogged filter can cause overheating and possibly damage the vacuum cleaner.

Clean or replace filters regularly. Do not use the vacuum or filters for collecting hazardous or other health endangering materials.

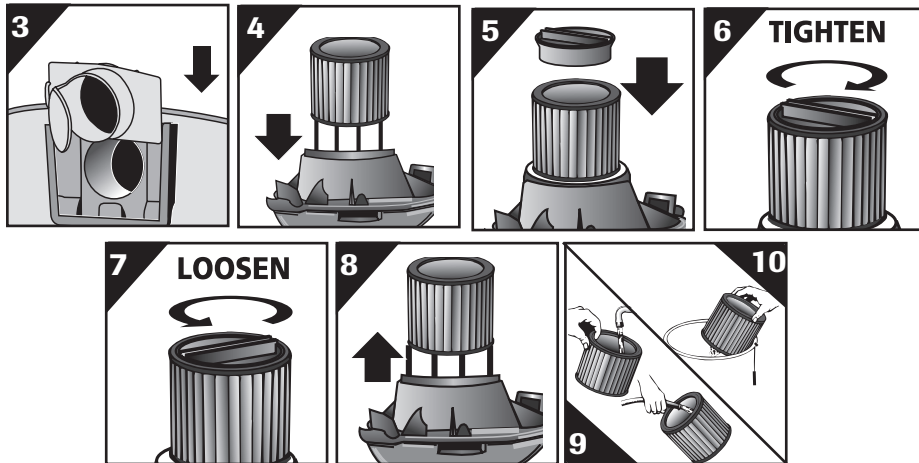
NOTE: Never machine wash or dry filters.

DRY PICK UP OPERATION

For models 22XJ59 and 22XJ60, make sure inlet deflector is fully inserted into deflector guide on inside of tank. If it is not, install inlet deflector by sliding it downward into slot on deflector guide (**Figure 3**). **NOTE:** Hose must be removed before inlet deflector can be inserted into or removed from deflector guide. Opening on inlet deflector can face either side of tank. Inlet deflector should always be in place for any type of cleaning. With the tank cover in an upside down position, slide the cartridge filter down over the lid cage, pushing until the filter seals against cover (**Figure 4**).

NOTE: Foam sleeve does not need to be removed for dry pick up. Place the filter retainer into the top of the cartridge filter, holding the tank cover with one hand, turn the handle on the filter retainer clockwise to tighten, locking the filter into place (**Figures 5 & 6**). To remove the filter for cleaning, again hold the tank cover and turn the filter retainer counter-clockwise to loosen and remove, slide the cartridge filter off the lid cage (**Figures 7 & 8**). To clean the cartridge filter shake or brush off excess dirt or rinse (from the inside of the filter) with water, dry completely (approximately 24 hours) and reinstall (**Figures 9 & 10**). Better quality filtration is required for finer dry materials. Collection filter bags are recommended for very fine materials such as dry wall dust.

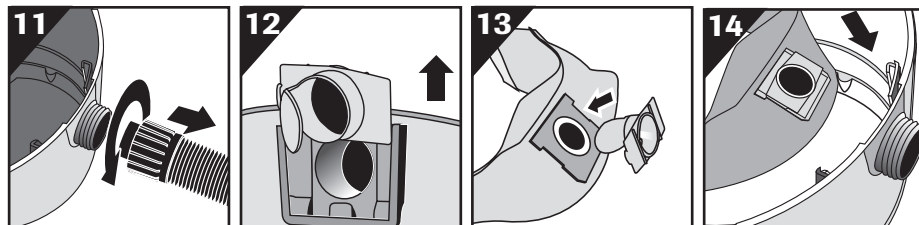
NOTE: When using the vacuum to pick up very fine dust such as sawdust or dry wall dust, it will be necessary to empty the tank and clean the filter at more frequent intervals to maintain maximum pick up power or upgrade to collection filter bags.



INSTALLING COLLECTION FILTER BAG

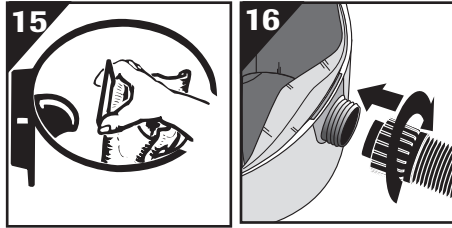
(Not standard on all models)

1. Use for dry pick up only. Use in conjunction with cartridge filter for picking up soot, cement, plaster or drywall dust.
2. With cord disconnected from receptacle, pull latches in an outward motion and remove tank cover.
3. Unscrew hose locking-nut and remove hose from inlet (**Figure 11**).
4. For models 22XJ59 and 22XJ60, remove inlet deflector from deflector guide (**Figure 12**). **NOTE:** Hose must be removed before inlet deflector can be taken out. With the opening of the inlet deflector facing the left or right side of the filter bag, slide filter bag collar over deflector matching notches of bag collar to tabs on inlet deflector, bag will only fit properly one way (**Figure 13**). Slide deflector with collection bag attached into deflector guide (**Figure 14**).



OPERATION INSTRUCTIONS (CONTINUED)

- For model 22XJ56, grasp cardboard collar firmly on filter bag and slide guard onto inlet fitting as far as possible (**Figure 15**).
- Reinsert hose into inlet and tighten locking-nut (**Figure 16**).
- When secured in place, expand bag and position around the inside of the tank.



WET PICK UP OPERATION

Remove all dry filters plus all dirt and debris found in the tank assembly. For best results for wet pick up we recommend removing the cartridge filter and utilizing the foam sleeve (already in place over lid cage). For models 22XJ59 and 22XJ60, make sure inlet deflector is fully inserted into deflector guide on inside of tank. If it is not, install inlet deflector by sliding it downward into slot on deflector guide (**Figure 17**). **NOTE:** Hose must be removed before inlet deflector can be inserted into or removed from deflector guide. Opening on inlet deflector can face either side of tank. Inlet deflector should always be in place for any type of cleaning. Misting in exhaust air may occur if the foam sleeve becomes saturated during wet pick up. If misting occurs, remove and dry the saturated foam sleeve or replace with another dry foam sleeve to eliminate the misting and possible dripping of liquid around the lid. Turn the unit off immediately upon completing a wet pick up job or when tank is full and ready to be emptied, raise the hose to drain any excess liquid into the tank. The interior of the tank should be periodically cleaned. The foam sleeve should be cleaned periodically as described in the following steps:

- Always disconnect the plug from the wall receptacle before removing the tank cover. Remove foam sleeve by sliding it up and off the lid cage.
- Shake excess dust off sleeve with rapid up and down movement.
- Hold sleeve under running water rinsing from the inside. A water wash is not always required, depending on the condition of the sleeve.
- Gently wring out excess water, blot sleeve with a clean towel and allow foam sleeve to dry. The foam sleeve is now ready to be reinstalled on the lid cage.

NOTE: For models 22XJ59, 22XJ56 and 22XJ60, bottom of sleeve should be TUCKED in groove between lid cage and tank lid (**Figure 18**).

NOTE: Wet pick up accessories should be washed periodically with soap and water, especially after picking up wet, sticky liquids. Picking up detergent or cleaners that create foam or suds can defeat the vacuum's filtration. This could cause foreign material to pass into the motor impeller area and shorten motor life. This is not normal use and is not covered by product warranty.

AUTOMATIC SUCTION SHUT-OFF

This vacuum is equipped with an automatic suction shut-off that operates when picking up liquids. As the level of the liquid rises in the tank, an internal float rises until it seats itself against a seal at the intake of the motor, shutting off suction. When this happens, the motor will develop a higher than normal pitch noise and the suction is drastically reduced. If this occurs, turn the unit off immediately. Failure to turn unit off after float rises and shuts off suction will result in extensive damage to the motor. To continue use, empty the liquid waste from the tank as outlined in the paragraph below. (**Emptying Tank**).

NOTE: If accidentally tipped over, the vacuum could lose suction. If this occurs, turn unit off and place vac in upright position. This will allow the float to return to its normal position, and you will be able to continue operation.

CAUTION

EMPTYING TANK

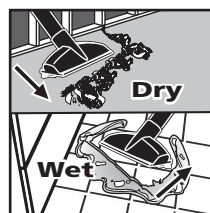
Use special care when emptying heavily loaded tanks. Your Wet/Dry Vacuum may be emptied of liquid waste by removing the tank cover. To empty, switch off the vac and remove the plug from the wall receptacle. Remove the tank cover and empty the tank.

NOTE: For those models with a tank drain, tank can be emptied by removing drain cap and draining liquid waste into a suitable drain.

For those models with a Flip 'N' Pour Dolly, tank can be emptied using this feature and pour liquid waste into a suitable drain, toilet, wet room, etc. With vacuum cord unplugged from power outlet and lid/head assembly removed, position dolly properly at selected drain. Remove accessory basket from dolly. Ensure pivot clasp secures tank to pivot tube and brakes are engaged on dolly. Grasp dolly tank handle with two hands. In a controlled manner slowly lift on tank handle, tipping tank back over pivot tube, emptying liquid from the tank into a suitable drain.



WET/DRY FLOOR NOZZLE



TROUBLESHOOTING GUIDE

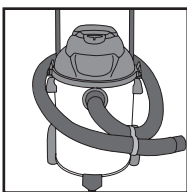
Symptom	Possible Cause(s)	Corrective Action
Parts/accessories missing	Packed in tank	Check in tank
Vacuum cleaner will not start	<ol style="list-style-type: none"> 1. No power at receptacle 2. Thermal shutdown may be activated 3. Motor does not run 	<ol style="list-style-type: none"> 1. Check for power 2. Refer to Auto Re-setting Thermal Motor Protective Device in the Operation Section 3. Replace motor
Dust discharging from exhaust	<ol style="list-style-type: none"> 1. Filter not installed/not installed properly 2. Filter damaged 3. Filter clogged or dust is too fine 4. Filter not functional 	<ol style="list-style-type: none"> 1. Properly install filter 2. Replace filter 3. Use more efficient filter 4. Clean or replace filter
Loss of suction	<ol style="list-style-type: none"> 1. Loose hose connection 2. Filter clogged 3. Full tank 4. Hole in hose 	<ol style="list-style-type: none"> 1. Tighten hose connection 2. Clean or replace filter 3. Empty tank 4. Replace hose
Misting in the exhaust air	Saturated filter	Replace saturated filter with a dry filter

MAINTENANCE INSTRUCTIONS

⚠ WARNING *Be sure to disconnect power supply before attempting to service or remove any components.*

STORAGE

Before storing the vacuum cleaner, always empty and clean the tank. Never allow liquids to sit in the tank for any extended period of time. **Always store the vacuum cleaner indoors.**



Hose Holder
(Not standard on all models)

LUBRICATION

No lubrication is necessary as the motor is equipped with lifetime lubricated bearings.

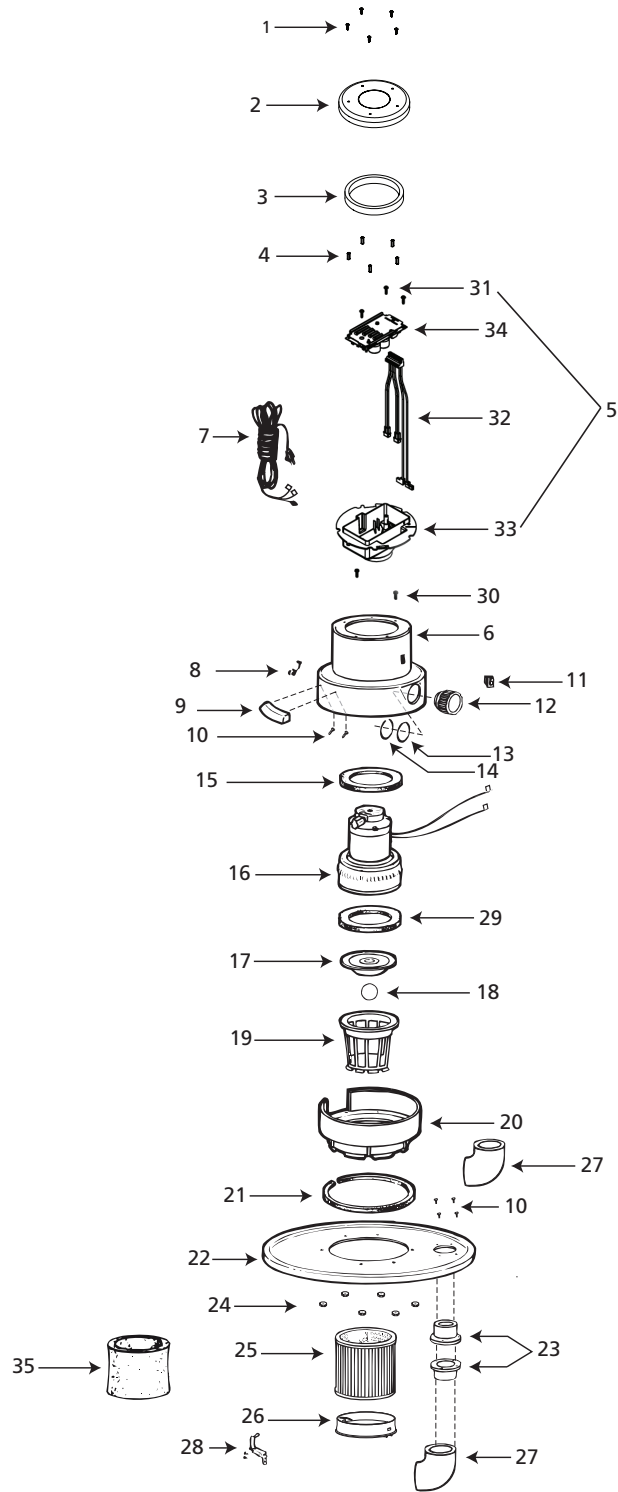
SERVICE

Do not attempt to service your Dayton wet/dry vacuum cleaner beyond that described in this manual. Refer all other servicing to a qualified service center.

⚠ WARNING

IF ANY OF THE MOTOR HOUSING PARTS SHOULD BECOME DETACHED OR BROKEN, EXPOSING THE MOTOR OR ANY OTHER ELECTRICAL COMPONENTS, OPERATION SHOULD BE DISCONTINUED IMMEDIATELY TO AVOID PERSONAL INJURY OR FURTHER DAMAGE TO THE VACUUM. REPAIRS SHOULD BE MADE BEFORE REUSING THE VACUUM.

REPAIR PARTS ILLUSTRATION FOR 1VHG3A



For Repair Parts, call 1-800 Grainger

24 hours a day – 365 days a year

Please provide following information:

- Model number
- Serial number (if any)
- Part description and number as shown in parts list

REPAIR PARTS LIST FOR 1VHG3A

Ref. No.	Description	1VHG3A	Qty.
1	#10-24 x 3/8" Pan head screw	*	5
2	Motor cover	1945310	1
3	Foam pad	9933410	1
4	Hex spacer	9933200	5
5	Motor controller Includes 31-34	1944933	1
6	Motor housing	1944943	1
7	Power cord	4152100	1
8	Strain relief bushing	3401099	1
9	Handle pkg. (includes 2 handles and hardware)	9355196	1
10	#10 x 5/8" Slotted hex head screw, type AB	*	8
11	Switch	8231900	1
12	Exhaust fitting	8460000	1
13	Gasket O-ring	8323400	1
14	Retaining ring	3600299	1
15	Mid motor gasket	5630000	1
16	Motor	1944278	1
17	Grid plate	8940010	1
18	Ball float	0081100	1
19	Filter cage	8790100	1
20	Lid adapter	8988001	1
21	Strip gasket	2071102	1
22	Cover	3140400	1
23	Flange ferrule	2340100	2
24	#10-24 Hex nut, washer base	*	6
25	Ultra-duty cartridge filter	1VHG9	1
26	Filter retainer	3008000	1
27	Inlet elbow	0910400	2
28	Clamp assembly	4580096	1
29	Lower motor gasket	2072100	1
30	Screw #8-10 w/lock	1591725	2
31	Screw, flanged, 16mm Long	2783410	3
32	Wire Harness	2941120	1
33	Controller baffle	2940770	1
34	Controller	1944931	1
35	Foam Sleeve	5X879A	1
Δ	12' x 1½" Hose (3.66m x 3.81cm)	5AU40	1
Δ	6" Master nozzle (15.24cm)	7180004	1
Δ	6" Squeegee shoe (15.25cm)	7380496	1
‡	6" Brush Shoe (15.25cm)	7370496	1
‡	HEPA Cartridge filter	4TB93	1

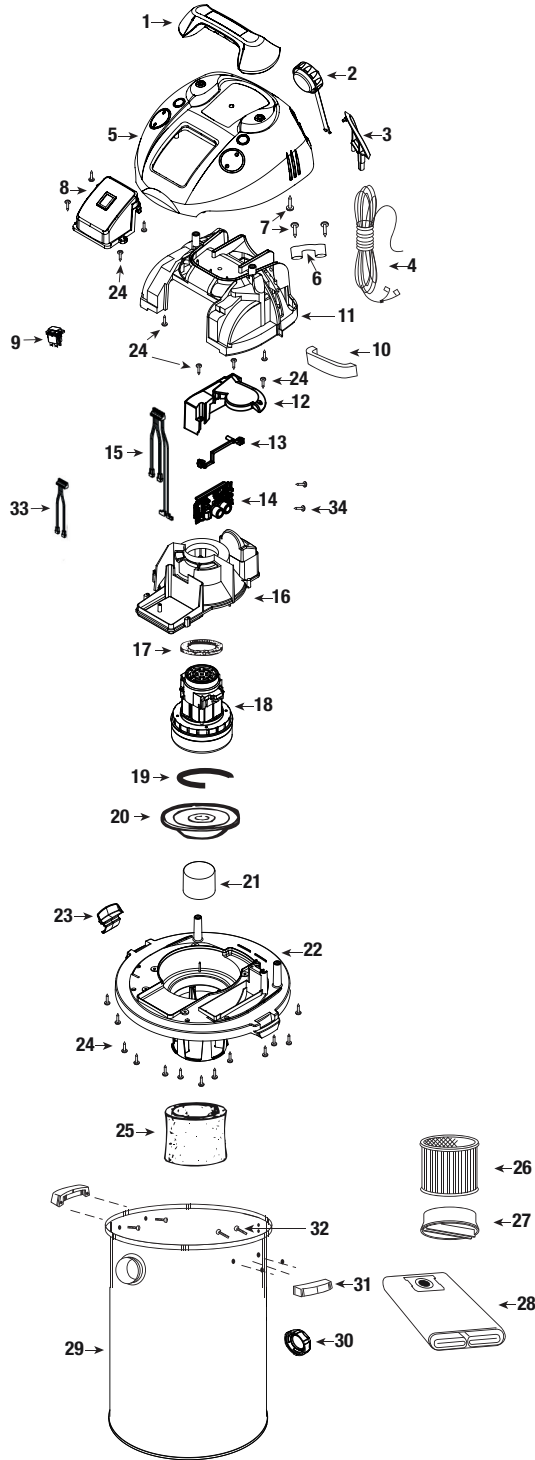
(*) Standard hardware item, available locally.

(Δ) Not shown.

(‡) Optional.

Do not attempt to service your Dayton vacuum beyond that described in the Operating Instructions and Parts Manual

REPAIR PARTS ILLUSTRATION FOR 22XJ56



For Repair Parts, call 1-800 Grainger

24 hours a day – 365 days a year

Please provide following information:

- Model number
- Serial number (if any)
- Part description and number as shown in parts list

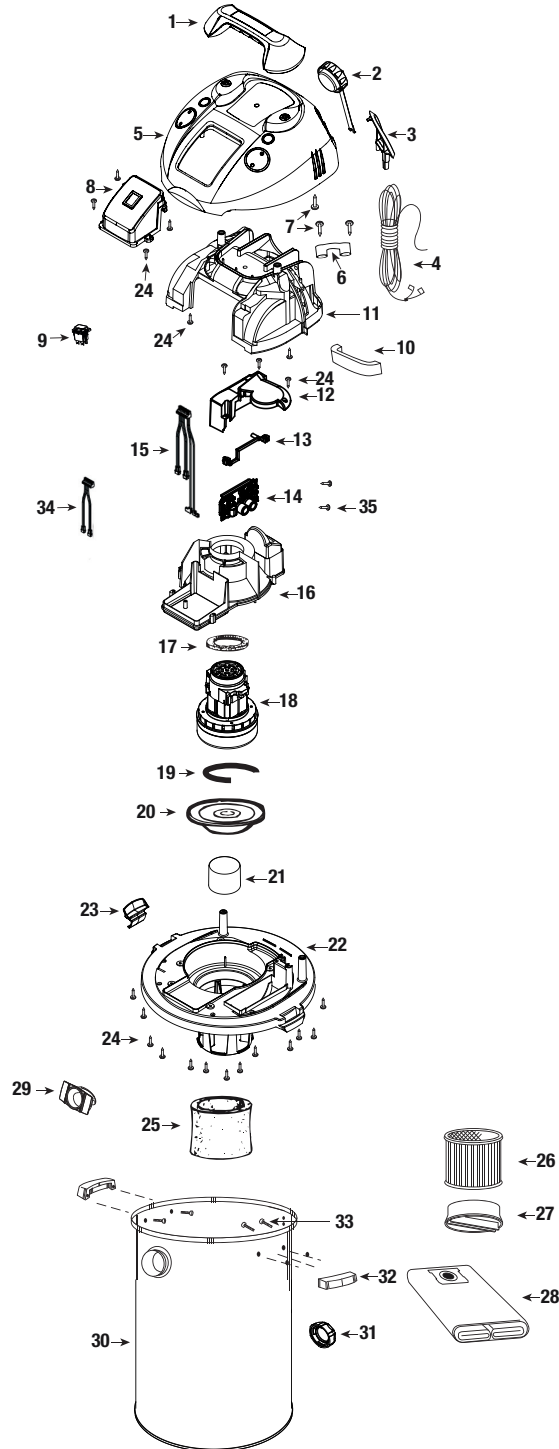
REPAIR PARTS LIST FOR 22XJ56

Ref. No.	Description	22XJ56	Qty.
1	Handle Assembly	6463351	1
2	Blower Cap Assembly	7412538	1
3	Power Cord Surround	6463100	1
4	Power Cord	4880069	1
5	Top Cover Assembly	6463055	1
6	Cord Clamp	0049810	1
7	Screw #6 x 3/4" (1.9 cm) Type B Phillips	1510499	3
8	Electrical Panel Assembly (Includes 9)	6460580	1
9	Switch	8232410	1
10	Inner Cover Accoustical Foam	1290556	1
11	Undercover	6460320	1
12	Heat Sink Air Box	6461800	1
13	Circuit Board Mounting Bracket	6461700	1
14	Circuit Board	1945303	1
15	Wire Harness-Motor	2941121	1
16	Motor Housing	6460450	1
17	Upper Motor Gasket	2070000	1
18	Motor	1944278	1
19	Lower Motor Gasket	2072001	1
20	Grid Plate	8865700	1
21	Float Cup	7411200	1
22	Lid Cage and Latch Assembly	6463053	1
23	Lid Latch	6461100	2
24	Screw #10 x 3/4" (1.9 cm) Trilobe T25	1517699	22
25	Foam Sleeve	5X879A	1
26	Cartridge Filter	4TB93	1
27	Filter Retainer	3008000	1
28	Collection Filter Bag	1UG85	1
29	Tank Assembly	5201797	1
30	Drain Cover	7446800	1
31	Side Tank Handle	9355100	2
32	Screw #10 x 3/4" (1.9 cm) SL Hex Head	1503999	4
33	Wire Harness-Switch	2941119	1
34	Screw M5 x 16mm long, #20 Torx Drive	2783410	2
Δ	12' (3.6 m) x 1½" (3.8 cm) Positive Lock Hose	5AU40	1
Δ	1½" (3.8 cm) Wand- Lower	3261100	1
Δ	1½" (3.8 cm) Wand- Upper	3261000	1
Δ	14" (35.5 cm) Master Nozzle	7281400	1
Δ	14" (35.5 cm) Squeegee Insert	7111400	1
Δ	14" (35.5 cm) Carpet Insert	7331400	1
Δ	14" (35.5 cm) Brush Insert	7341400	1
Δ	Crevice Tool	2NYE8	1
Δ	Dusting Brush	2NYE6	1
Δ	Utility Nozzle	2NYE7	1
Δ	Hose Holder	3132630	1

(Δ) Not shown.

Do not attempt to service your Dayton vacuum beyond that described in the Operating Instructions and Parts Manual

REPAIR PARTS ILLUSTRATION FOR 22XJ59, 22XJ60



For Repair Parts, call 1-800 Grainger

24 hours a day – 365 days a year

Please provide following information:

- Model number
- Serial number (if any)
- Part description and number as shown in parts list

REPAIR PARTS LIST FOR 22XJ59, 22XJ60

Ref. No.	Description	22XJ59	22XJ60	Qty.
1	Handle Assembly	6463351	6463351	1
2	Blower Cap Assembly	7412538	7412538	1
3	Power Cord Surround	6463100	6463100	1
4	Power Cord	4880069	4880069	1
5	Top Cover Assembly	6463052	6463054	1
6	Cord Clamp	0049810	0049810	1
7	Screw #6 x 3/4" (1.9 cm) Type B Phillips	1510499	1510499	3
8	Electrical Panel Assembly (Includes 9)	6460580	6460580	1
9	Switch	8232410	8232410	1
10	Inner Cover accoustical Foam	1290556	1290556	1
11	Undercover	6460320	6460320	1
12	Heat Sink Air Box	6461800	6461800	1
13	Circuit Board Mounting Bracket	6461700	6461700	1
14	Circuit Board	1945303	1945303	1
15	Wire Harness-Motor	2941121	2941121	1
16	Motor Housing	6460450	6460450	1
17	Upper Motor Gasket	2070000	2070000	1
18	Motor	1944278	1944278	1
19	Lower Motor Gasket	2072001	2072001	1
20	Grid Plate	8865700	8865700	1
21	Float Cup	7411200	7411200	1
22	Lid Cage and Latch Assembly	1945302	6463053	1
23	Lid Latch	6461100	6461100	2
24	Screw #10 x 3/4" (1.9 cm) Trilobe T25	1517699	1517699	22
25	Foam Sleeve	5X879A	5X879A	1
26	Cartridge Filter	4TB93	4TB93	1
27	Filter Retainer	3008000	3008000	1
28	Collection Filter Bag	3UP66	1UG85	1
29	Inlet Deflector	7413120	7413120	1
30	Tank Assembly	5121497	5165597	1
31	Drain Cover	7446800	7446800	1
32	Side Tank Handle	9355100	9355100	2
33	Screw #10 x 3/4" (1.9 cm) SL Hex Head	1503999	1503999	4
34	Wire Harness-Switch	2941119	2941119	1
35	Screw: Flange, 16MM	2783410	2783410	2
Δ	12' (3.6 m) x 1½" (3.8 cm) Positive Lock Hose	5AU40	5AU40	1
Δ	1½" (3.8 cm) Wand- Lower	3261100	3261100	1
Δ	1½" (3.8 cm) Wand- Upper	3261000	3261000	1
Δ	14" (35.5 cm) Master Nozzle	7281400	7281400	1
Δ	14" (35.5 cm) Squeegee Insert	7111400	7111400	1
Δ	14" (35.5 cm) Carpet Insert	7331400	7331400	1
Δ	14" (35.5 cm) Brush Insert	7341400	7341400	1
Δ	Crevice Tool	2NYE8	2NYE8	1
Δ	Dusting Brush	2NYE6	2NYE6	1
Δ	Utility Nozzle	2NYE7	2NYE7	1
Δ	Hose Holder	3132630	3132630	1

(Δ) Not shown.

Do not attempt to service your Dayton vacuum beyond that described in the Operating Instructions and Parts Manual

**DOLLY ASSEMBLY INSTRUCTIONS
(Model 22XJ59)**

Tools required:

- (2) 1/2 inch open end wrenches, (2) 7/16 inch open end wrenches, or a socket set and a hammer.
1. Insert 2 1/2 inch long bolt through center hole in rear frame, attach split lockwasher, nuts tighten securely.
 2. Attach handle brace to back of rear frame with 5/8 inch long machine screws, lockwashers, and nuts (Finger tighten only).
 3. Position main frame inside rear frame. Attach (2) 5/8 inch long machine screws, lockwashers and nuts in both sides. Tighten securely.
 4. Attach handle uprights, inside main frame (make sure buttons at top face inward) using 5/8 inch long machine screws, lockwashers and nuts (Finger tighten only). Align holes at top of handle braces with holes in handle uprights. Attach with 1 1/4 inch long machine screws, lockwashers and nuts (Tighten securely).
 5. Go back and tighten machine screws at bottom of uprights and braces.
 6. Attach caster sockets (open end down) to front of main frame using 5/8 inch long machine screws, lockwashers and nuts. Insert casters into sockets.
 7. Apply basket adapters to handle upright. **Figure 19** (see **Figure 20** for correct positioning of adapters.)
 8. Attach handle onto uprights by pushing down and holding buttons in on uprights.
 9. Place tank retaining bracket through slot and bolt in rear frame and screw on knob.
 10. Slide bumper down over main dolly frame until it bottoms out.
 11. Place axle upright on a hard surface and hammer on (1) cap nut. Place (1) wheel on axle and slide down to cap nut. Slide axle through rear of frame and slide on other wheel. Before assembling cap nut on other end of axle, be certain dolly is assembled correctly. (You may place tank on dolly and tighten knob of retaining bracket to be sure of correct assembly.)
 12. After ensuring dolly is assembled correctly remove tank and place dolly on side with installed cap nut on hard surface and hammer second cap nut on axle.
 13. Place accessory basket on adapters and snap in place while pulling out on outer lip of basket rim (**Figure 20**).

REPAIR PARTS LIST FOR 22XJ59

Ref. No.	Description	Part Number	Qty.
1	Handle	2085502	1
2	Handle upright	2085601	2
3	Handle brace	2085701	2
4	Δ 1/4" - 20 x 1 1/4" Hex head machine screw	*	2
5	Δ 1/4" External tooth lockwasher	*	14
6	Δ 1/4" - 20 Hex nut	*	12
7	Rear dolly frame	2083200	1
8	Main dolly frame	2083110	1
9	Δ 5/16" - 18 x 2 1/2" Hex head bolt	*	1
10	Δ 5/16" Split lockwasher	*	1
11	Δ 5/16" - 18 Hex nut	*	1
12	▪ Tank retainer bracket	2085300	1
13	▪ Threaded knob	2330100	1
14	Axle	2440600	1
15	Δ 1/4" - 20 x 5/8" Hex head machine screw	*	12
16	▪ Caster socket	7540001	2
17	▪ Caster	6775200	2
18	Bumper	8781001	1
19	10" Wheel (25.4 cm)	2420700	2
20	Δ Cap nut	4300299	2
21	Δ 1/4" - 20 Hex nut	*	2
22	Accessory basket	7442902	1
23	Basket adapter	7442950	2
‡	Floating floor nozzle	3UP60	1
▪	Caster and hardware package	4209496	1

(Δ) Standard hardware item, available locally.
(*) 4200596 hardware package only.
(‡) Optional.

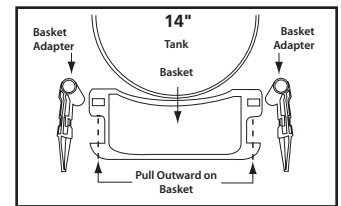
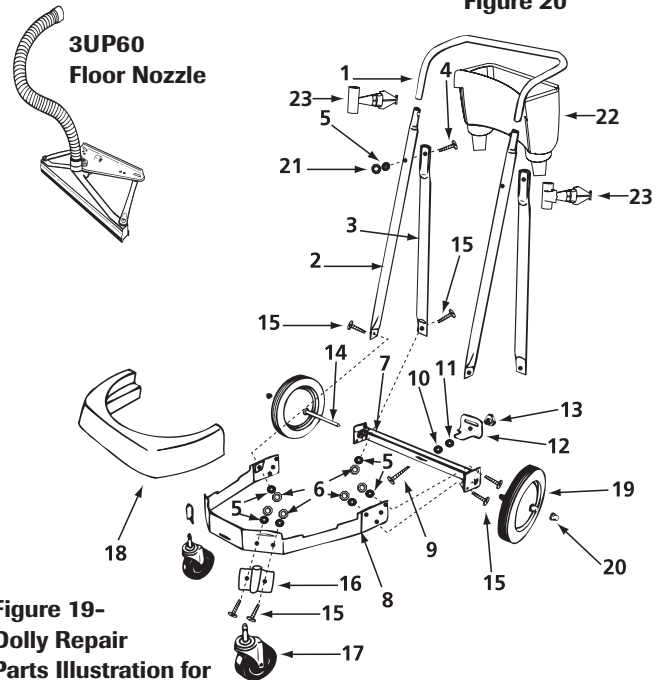


Figure 20



**Figure 19-
Dolly Repair
Parts Illustration for
Model 22XJ59**

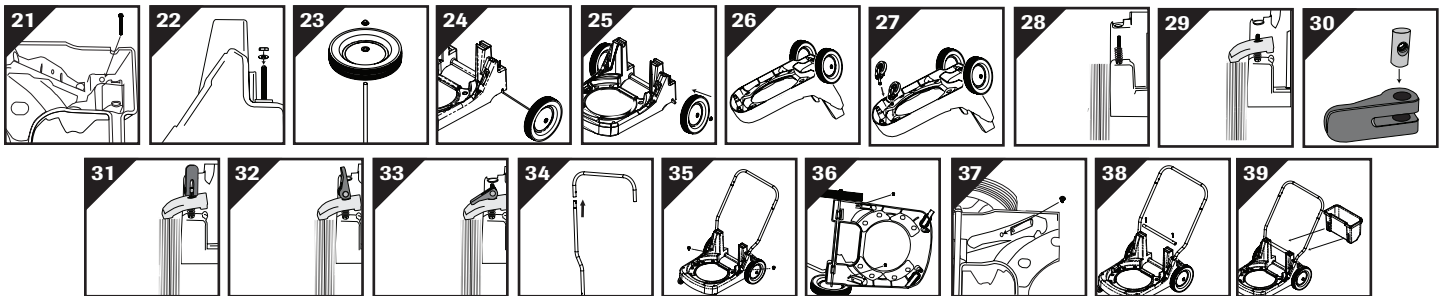
DOLLY ASSEMBLY INSTRUCTIONS

(Models 22XJ56 and 22XJ60)

Tools required:

(2) ½ inch open end wrenches, (2) 7/16 inch open end wrenches, or a socket set and a hammer.

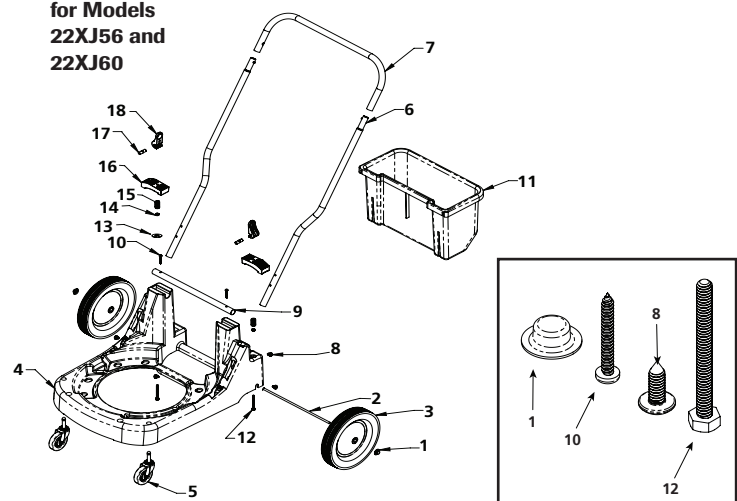
1. Place dolly onto one side on flat surface.
2. From bottom of the dolly, slide ¼" - 20 X 2.5" Lg Hex Head Machine Screw through one hole in back portion of dolly **(Figure 21)**.
3. Secure screw from top of dolly by placing washer then hex nut onto screw and tighten **(Figure 22)**.
4. Repeat steps 2 and 3 using second hole on opposite side of dolly.
5. Place axle upright on a hard surface, slide on one wheel and hammer on one cap nut. Slide wheel to rest against cap nut **(Figure 23)**.
6. Slide axle through holes provided in dolly, at the back side, you will encounter resistance **(Figure 24)**.
7. Slide remaining wheel onto axle and hammer on second cap nut **(Figure 25)**.
8. Place dolly on the floor so the bottom is facing up **(Figure 26)**.
9. Insert casters into holes provided in dolly opposite of wheels. Apply pressure and twisting motion until caster snap into place **(Figure 27)**.
10. Turn dolly so it is sitting on the casters and wheels.
11. Place compression spring onto ¼" - 20 X 2.5" Lg. Hex Head Machine Screw on one side of dolly **(Figure 28)**.
12. Slide brake clamp onto ¼" - 20 X 2.5" Lg. Hex Head Machine Screw over top of spring, making sure longer side is positioned over wheel **(Figure 29)**.
13. Insert cross dowel nut into hole in brake lever **(Figure 30)**.
14. Scret handle upright assembly onto ¼" - 20 X 2.5" Lg. Hex Head Machine Screw through hole in cross dowel **(Figure 31)**.
15. Adjust brake lever by twisting it up or down **(Figure 32)** so wheel moves freely but locks into place when brake lever is in the down position **(Figure 33)**.
16. Repeat steps 11-15 to install second brake lever.
17. Insert handle upright into handle top, slide one handle upright into handle top making sure button faces towards center of handle top. Push until button locks into place **(Figure 34)**.
18. Repeat step 17 using second handle upright.
19. Slide handle assembly into holes provided in back of dolly until handle stops. Use two of the four ¼" X ¾" screws to secure handle assembly to top side of dolly **(Figure 35)**.
20. Place dolly onto one side.
21. Use the remaining two ¼" X ¾" screws to secure handle assembly to bottom side of dolly making sure to use the hole provided in dolly **(Figure 36, 37)**.
22. Place pivot tube into u-shaped cutout on dolly with holes facing up. Secure with #10 X 1½" screws provided **(Figure 38)**.
23. Slide accessory basket **(not standard with all models)** onto rear of dolly **(Figure 39)**.
24. Lock both wheels by pushing the levers to the down position. Install tank assembly following the instruction and illustrations in this manual.



LISTA DE PIEZAS DE REPARACIÓN PARA LAS UNIDADES 22XJ56 ET 22XJ60

Ref. No.	Description	Part Number	Qty.
1	Cap nut	4300299	2
2	Axle ½ x 24 5/8 Long (Solid)	2442600	1
3	Wheel 10" (22XJ60)	2420500	2
4	Dolly Black	2420700	2
5	Caster	7432001	1
6	Handle Upright	2088800	2
7	Handle Top	2088900	1
8	Screw ¼" x ¾" Long Phillips (Truss)	1514699	4
9	Pivot Tube	2088700	1
10	Screw #10 x 1½" AB Type	1504199	2
11	Accessory Basket	7432800	1
12	1/4" - 20 x 2.5" Lg. Hex Head Machine Screw	0907599	2
13	Washer	0700399	2
14	Hex Nut	1300199	2
15	Compression Spring	2803099	2
16	Brake Clamp	7432050	2
17	Cross Dowel Nut	7433000	2
18	Brake Lever	7432900	2

Dolly Assembly Parts Illustration for Models 22XJ56 and 22XJ60



HANDLE AND PIVOT ADAPTER ASSEMBLY

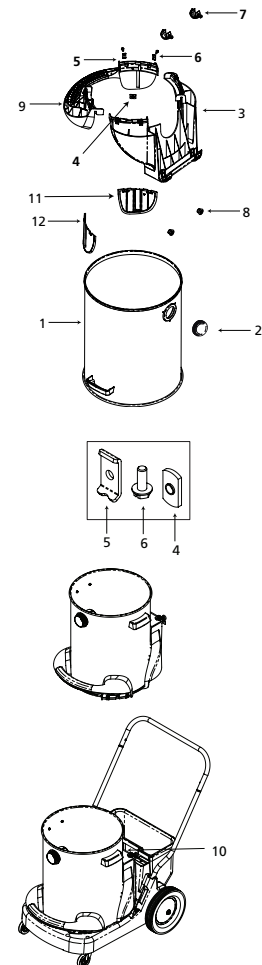
(Models 22XJ56 and 22XJ60)

1. Place tank, **(Item 1)** upside down so that bottom is facing up.
2. Position tank so tank drain is facing you, and remove tank drain cap, **(Item 2)**.
3. Place pivot adapter, **(Item 3)** over rim of tank (opposite of inlet). **PLEASE NOTE:** Pivot adapter must be centered around the tank drain fitting.
4. Position weld nut, **(Item 4)** in slot on pivot adapter, on the inside wall of the pivot adapter, with flat side of weld nut toward rim of tank.
5. Position tank clip, **(Item 5)** on opposite side of pivot adapter, with notch on tank clip facing up. Secure with screw, **(Item 6)**. Repeat on other side of pivot adapter.
6. Replace tank drain cap.
7. Install pivot clasp, **(Item 7)** into pivot adapter, making sure opening in the pivot clasp is even with the channel in the pivot adapter. Secure with knob, **(Item 8)**. Repeat this step with other pivot clasp
8. Reposition tank so inlet is facing you.
9. Place tank handle, **(Item 9)** over rim of tank (opposite of drain) making sure to maintain equal spacing on both sides, between already installed pivot adapter and tank handle. **PLEASE NOTE: SPACING SHOULD BE APPROXIMATELY 1 5/16" BETWEEN PIVOT ADAPTER AND TANK HANDLE WHERE THEY MATE TO TANK.**
10. Position weld nut, **(Item 4)** in slot on tank handle with flat side of weld nut toward rim of tank.
11. Position tank clip, **(Item 5)** on opposite side of tank handle, with notch on tank clip facing up. Secure with screw, **(Item 6)**. Repeat on other side of tank handle.
12. Remove webbing between spacers, **(Item 11 & 12)**.
13. Insert spacer marked (A) on the left side of tank, sliding it up and between the tank handle and the outside wall of the tank. Insert spacer marked (B) on the other side of tank.
14. Return tank to upright position, and place tank into dolly base, making sure pivot clasps secure the tank to the pivot tube, **(Item 10)**. See Dolly Assembly instructions.
15. Place motor housing onto unit. Your vacuum is now ready for use.

LISTA DE PIEZAS DE REPARACIÓN PARA LAS UNIDADES 22XJ56 ET 22XJ

Nº de Ref.	Descripción	Part Number	Qty.
1	Depósito	*	1
2	Tapa de drenaje	7446800	1
3	Adaptador pivotante	7432400	1
4	Tuerca soldada	5000499	8
5	Abrazadera del depósito	2089000	8
6	Tornillo mecánico de cabeza hexagonal #10-24 x 1/2"	0907199	8
7	Pasador de pivote	7432600	2
8	Perilla	7432700	2
9	Manija del depósito	7432200	1
10	Tubo de pivote	2088700	1
11	Separador A	7432500	1
12	Separador B	7432510	1

* Consulte el listado de piezas de reparación de la aspiradora para ver el número.



DAYTON ONE-YEAR LIMITED WARRANTY

DAYTON ONE-YEAR LIMITED WARRANTY. All Dayton® product models covered in this manual are warranted by Dayton Electric Mfg. Co. ("Dayton") to the original user against defects in workmanship or materials under normal use for one year after date of purchase. If the Dayton product is part of a set, only the portion that is defective is subject to this warranty. Any product or part which is determined to be defective in material or workmanship and returned to an authorized service location, as Dayton or Dayton's designee designates, shipping costs prepaid, will be, as the exclusive remedy, repaired or replaced with a new or reconditioned product or part of equal utility or a full refund given, at Dayton's or Dayton's designee's option, at no charge. For limited warranty claim procedures, see "Warranty Service" below. This warranty is void if there is evidence of misuse, mis-repair, mis-installation, abuse or alteration. This warranty does not cover normal wear and tear of Dayton products or portions of them, or products or portions of them which are consumable in normal use. This limited warranty gives purchasers specific legal rights, and you may also have other rights which vary from jurisdiction to jurisdiction.

WARRANTY DISCLAIMERS AND LIMITATIONS OF LIABILITY RELATING TO ALL CUSTOMERS FOR ALL PRODUCTS

LIMITATION OF LIABILITY. TO THE EXTENT ALLOWABLE UNDER APPLICABLE LAW, DAYTON'S LIABILITY FOR CONSEQUENTIAL AND INCIDENTAL DAMAGES IS EXPRESSLY DISCLAIMED. DAYTON'S LIABILITY IN ALL EVENTS IS LIMITED TO AND SHALL NOT EXCEED THE PURCHASE PRICE PAID.

WARRANTY DISCLAIMER. A DILIGENT EFFORT HAS BEEN MADE TO PROVIDE PRODUCT INFORMATION AND ILLUSTRATE THE PRODUCTS IN THIS LITERATURE ACCURATELY; HOWEVER, SUCH INFORMATION AND ILLUSTRATIONS ARE FOR THE SOLE PURPOSE OF IDENTIFICATION, AND DO NOT EXPRESS OR IMPLY A WARRANTY THAT THE PRODUCTS ARE MERCHANTABILITY, OR FIT FOR A PARTICULAR PURPOSE, OR THAT THE PRODUCTS WILL NECESSARILY CONFORM TO THE ILLUSTRATIONS OR DESCRIPTIONS. EXCEPT AS PROVIDED BELOW, NO WARRANTY OR AFFIRMATION OF FACT, EXPRESSED OR IMPLIED, OTHER THAN AS STATED IN THE "LIMITED WARRANTY" ABOVE IS MADE OR AUTHORIZED BY DAYTON.

PRODUCT SUITABILITY. MANY JURISDICTIONS HAVE CODES AND REGULATIONS GOVERNING SALES, CONSTRUCTION, INSTALLATION, AND/OR USE OF PRODUCTS FOR CERTAIN PURPOSES, WHICH MAY VARY FROM THOSE IN NEIGHBORING AREAS. WHILE ATTEMPTS ARE MADE TO ASSURE THAT DAYTON PRODUCTS COMPLY WITH SUCH CODES, DAYTON CANNOT GUARANTEE COMPLIANCE, AND CANNOT BE RESPONSIBLE FOR HOW THE PRODUCT IS INSTALLED OR USED. BEFORE PURCHASE AND USE OF A PRODUCT, REVIEW THE SAFETY/SPECIFICATIONS, AND ALL APPLICABLE NATIONAL AND LOCAL CODES AND REGULATIONS, AND BE SURE THAT THE PRODUCT, INSTALLATION, AND USE WILL COMPLY WITH THEM.

CONSUMERS ONLY. CERTAIN ASPECTS OF DISCLAIMERS ARE NOT APPLICABLE TO CONSUMER PRODUCTS SOLD TO CONSUMERS; (A) SOME JURISDICTIONS DO NOT ALLOW THE EXCLUSION OR LIMITATION OF INCIDENTAL OR CONSEQUENTIAL DAMAGES, SO THE ABOVE LIMITATION OR EXCLUSION MAY NOT APPLY TO YOU; (B) ALSO, SOME JURISDICTIONS DO NOT ALLOW A LIMITATION ON HOW LONG AN IMPLIED WARRANTY LASTS, SO THE ABOVE LIMITATION MAY NOT APPLY TO YOU; AND (C) BY LAW, DURING THE PERIOD OF THIS LIMITED WARRANTY, ANY IMPLIED WARRANTIES OF MERCHANTABILITY OR FITNESS FOR A PARTICULAR PURPOSE APPLICABLE TO CONSUMER PRODUCTS PURCHASED BY CONSUMERS, MAY NOT BE EXCLUDED OR OTHERWISE DISCLAIMED.

THIS LIMITED WARRANTY ONLY APPLIES TO UNITED STATES PURCHASERS FOR DELIVERY IN THE UNITED STATES.

WARRANTY SERVICE

To obtain warranty service if you purchased the covered product directly from W.W. Grainger, Inc. ("Grainger"), (i) write or call or visit the local Grainger branch from which the product was purchased or another Grainger branch near you (see www.grainger.com for a listing of Grainger branches); or (ii) contact Grainger by going to www.grainger.com and clicking on the "Contact Us" link at the top of the page, then clicking on the "Email us" link; or (iii) call Customer Care (toll free) at 1-888-361-8649. To obtain warranty service if you purchased the covered product from another distributor or retailer, (i) go to www.grainger.com for Warranty Service; (ii) write or call or visit a Grainger branch near you; or (iii) call Customer Care (toll free) at 1-888-361-8649. In any case, you will need to provide, to the extent available, the purchase date, the original invoice number, the stock number, a description of the defect, and anything else specified in this Dayton One-Year Limited Warranty. You may be required to send the product in for inspection at your cost. You can follow up on the progress of inspections and corrections in the same ways. Title and risk of loss pass to buyer on delivery to common carrier, so if product was damaged in transit to you, file claim with carrier, not retailer, Grainger or Dayton. For warranty information for purchasers and/or delivery outside the United States, please use the following applicable contact information:

**Dayton Electric Mfg. Co.,
100 Grainger Parkway, Lake Forest, IL 60045 U.S.A.
or call +1-888-361-8649**