

Please read and save these instructions. Read carefully before attempting to assemble, install, operate or maintain the product described. Protect yourself and others by observing all safety information. Failure to comply with instructions could result in personal injury and/or property damage! Retain instructions for future reference.

Dayton® Pallet Trucks

Description

The Electric Pallet Truck is specially designed for conveyance on level roads. Its compact structure makes it applicable for plants, workshops, wharfs, and small warehouses. It can also be used to load/unload cargo on trucks. The load capacity for each truck is marked on the truck data plate.

Unpacking and Inspection

Handle carefully. Check the packing list to account for all items. Visually inspect for shipping damage. If damaged, immediately file a claim with the carrier.

General Safety Information

▲ WARNING Do not use this pallet truck before reading and understanding these operating instructions.

NOTE: Keep this manual for future reference.

Thank you for purchasing this electric pallet truck. For your safety and to

ensure proper operation, carefully read this instruction book and the warnings on the pallet truck before using it.

These operating instructions are designed for you to thoroughly understand and master the safe operation of the pallet truck.

Specifications for multiple types of the pallet truck may be described in these operating instructions. During operation and maintenance, please apply the relevant aspects for the type of the pallet truck that you have purchased.

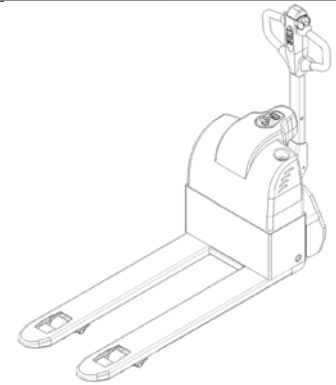


Figure 1

Safety specifications and special notices are marked with the following signs:

▲ WARNING Safety warnings must be observed to avoid serious personal injury or equipment damage.

Specifications

Model	Power Supply	Operation Type	Capacity/ Rated Load (Q)*	Load Center Distance (C)*	Load Distance, Center of Drive Axel to Fork (X)*	Wheelbase (Y)*	Turning Angle
-------	--------------	----------------	---------------------------	---------------------------	--	----------------	---------------

21XU81	Electric	Pedestrian	3000 lbs.	24"	40"	51"	180°
21XU82	Electric	Pedestrian	3000 lbs.	24"	40"	51"	180°

(*) See Figures 2 on page 4.

Model	Weight (incl. battery)	Axle loadings, laden (drive end/load end)	Axle loadings, unladen (drive end/load end)	Travel Speed (laden/unladen)	Lifting Speed (laden/unladen)	Lowering Speed (laden/unladen)
-------	------------------------	---	---	------------------------------	-------------------------------	--------------------------------

21XU81	440 lbs.	1232/2508 lbs.	352/88 lbs.	2.6" / 2.85 mph	5.91 / 10.43FPM	9.65 / 7.09FPM
21XU82	418 lbs.	1122/2596 lbs.	330/88 lbs.	2.6" / 2.85 mph	5.91 / 10.43FPM	9.65 / 7.09FPM

Model	Gradability (laden/unladen)	Brakes	Drive Motor Rating *s2 60min.	Lifting Motor Rating *s3 15%	Battery Voltage Norm. cap. K5	Battery Weight ±10%	Battery Dimensions	Drive Control	Sound Level (at driver's ears)
-------	-----------------------------	--------	-------------------------------	------------------------------	-------------------------------	---------------------	--------------------	---------------	--------------------------------

21XU81	4/10%	Electric mag.	0.6 hp	1.1 hp	2 x 12/60 V/Ah	105 lbs.	10.2 x 6.7 x 8.5"	MOSFET	69 dB(A)
21XU81	4/10%	Electric mag.	0.6 hp	1.1 hp	2 x 12/60 V/Ah	105 lbs.	10.2 x 6.7 x 8.5"	MOSFET	69 dB(A)

* NOTE: S1 = continuous running duty, S2 = short time duty and S3 = intermittent periodic duty

Dayton® Pallet Trucks

General Safety Information (Continued)

⚠ CAUTION *Caution must be observed to avoid personal injury or equipment damage.*

NOTE: – General notices and specifications should be observed before use.

IMPORTANT: The information reported within this manual is based on data available at the time of printing. Products are constantly being developed and improved, therefore, we reserve the right to modify our products at any time without prior notice. As a result, it is always recommended to verify possible updates and changes to manufacturer.

NOTE: The majority of this pallet truck consists of steel, which can be completely recycled. Waste material from repairs, maintenance, cleaning or scrapping, must be collected and disposed of in environmentally friendly ways and in accordance with local laws and ordinances. Recyclable material should be taken care of by qualified authorities. Environmentally hazardous waste, such as oil, oil filters, batteries, and electronics, will have a negative effect on the environment, or health, if disposed of improperly.

OPERATOR REQUIREMENTS

- Pallet truck must be operated by an authorized and trained person who can demonstrate its proper operation.

OBLIGATIONS AND RESPONSIBILITIES OF THE OPERATOR

- Operator must fully understand his obligations and have received training on the truck's proper

operation prior to use.

- Operator must master the information contained in these operating instructions.
- Operator should wear appropriate safety equipment during use, eg. safety boots, labour suit, etc.

FORBIDDEN USE BY UNAUTHORIZED PERSONS

- Operator must be responsible for the truck and must prevent unauthorized persons from driving or operating the truck.
- Lifting or carrying persons is strictly prohibited.

FAILURE AND FAULT

In the event of equipment failure or fault, notify maintenance personnel immediately. In cases where the truck's safety is compromised (e.g. worn-out wheel or brake fault), immediately discontinue using the truck until it is properly repaired.

REPAIR

Only professionally trained and specifically authorized individuals are permitted to repair or modify any part of the truck. Any changes to installed switches and safety devices by the operator are strictly prohibited.

IMPORTANT: All spare parts from the manufacturer are inspected by Quality Assurance Authorities. To ensure the safety and reliability of the truck's operation, only manufacturer approved spare parts may be used. Replaced parts, including oils and fuels, must be disposed of in accordance with environmental protection regulations.

DANGER AREA

The "danger area" refers to the area where the truck is working or lifting, causing a potentially dangerous situation for persons or property in that area.

⚠ WARNING *Unauthorized persons must keep away from the danger area. In situations with potential danger to others, the operator must give a warning notice. If the danger area isn't vacated as requested, the operator must stop using the truck immediately.*

WORKING IN HAZARDOUS ENVIRONMENTS

A pallet truck operating in an area where there is a hazard risk, or in any other high-risk area, should be specially equipped for use in that environment.

⚠ CAUTION *This pallet truck is not equipped for hazardous situations.*

SAFETY DEVICES AND WARNING SIGNS

Special attention should be given to safety devices, warning signs, and warning notices within these Operating Instructions and on the pallet truck itself.

DRIVING IN PUBLIC AREAS

The truck should not be driven on public roads.

DISTANCE BETWEEN VEHICLES

Bear in mind that the material handling vehicle in front of you may brake suddenly; therefore, keep a reasonable distance when operating this truck.

Models 21XU81 and 21XU82

General Safety Information (Continued)

PASSENGERS

Passengers should not ride on the truck unless it is indicated as permissible on the truck.

USE IN ELEVATORS AND ON LOADING PLATFORMS

This truck may only be driven into an elevator or loading platform if it has been authorized. The operator must confirm that the elevator or loading platform has adequate load capacity to support the weight of the operator, truck, load and other contents of the elevator or loading platform before entering the elevator or loading platform. Cargo should be placed properly inside the elevator to avoid touching the elevator walls. Passengers must enter the elevator only after proper parking of the truck, and should depart from the elevator before moving the truck.

DRIVING LANES AND WORK AREAS

Only lanes and routes that are specially allocated for truck traffic may be used. Unauthorized persons should stay away from work areas. Loads must only be stored in places specially provided for this purpose.

OPERATOR CONDUCT

Driving speeds must be applicable for conditions. Low speed is mandatory when turning, navigating narrow aisles, passing through doors, or driving with a blocked field of vision. The operator must be able to measure the braking distance to the front of the truck by sight and control his truck at all times.

Sudden braking (except in emergency), quick U-turns, and passing other trucks in dangerous or blind spots is prohibited. Operator should stay within the operator's area during operation.

VISIBILITY

The operator must have clear visibility in the driving direction the truck is traveling. If cargo obstructs your line of sight, operating in reverse is recommended. If operating in reverse isn't suitable, another person must walk ahead of the truck to give guidance and warning.

NEGOTIATING SLOPES AND INCLINES

Operating on slopes is permitted only when they are recognized lanes, when they are clean and non-slip surfaces, and when the technical data of the truck permits safe driving on such slopes or inclines. Cargo must face in an upward direction of slope. U-turns, cutting obliquely over slopes or inclines, and parking on slopes or inclines is prohibited. When operating on a slope, the truck should be driven at a slow speed and the operator must be prepared to brake and stop.

FLOOR LOAD

Carefully check maximum floor load capacities and ensure they are not exceeded.

TRANSPORTS

The truck should always be driven with the forks to the lowest position except when placing or moving a load. The truck should be driven in the opposite direction of the forks when possible. This will allow better visibility and maneuverability. Driving with the forks

pointing forward may cause the truck to turn unexpectedly.

LOAD CHARACTERISTICS

Only loads that have been safely and correctly secured may be carried. Never transport loads stacked higher than the top of the truck.

TRUCK ON A GANGWAY OR ANOTHER VEHICLE

Before the truck is driven from a loading dock onto a platform or vehicle, always check the maximum load capacity of the gangway. Ensure that there are devices to prevent the gangway from sliding, and the driver should remember to check the maximum load capacity of the vehicle that you intend to drive onto. There should be devices (e.g. wheel chocks) that prevent the vehicle from moving.

PARKING

The truck should not be left unattended other than in specified parking areas. The truck should always be parked on a level surface. If the truck is equipped with a parking brake, it should be engaged. The forks should be lowered to their lowest position. Always turn the key switch to the "OFF" position. Unauthorized personnel should not use the truck. Always remove the key when leaving the truck.

NOTE: If the truck will be left unused for a prolonged period without being recharged (e.g. between two shifts), the battery plug should be disconnected.

SIGNALING

Use the signal horn to attract attention as necessary.

Dayton® Pallet Trucks

General Safety Information (Continued)

PROTECTIVE SHOES

Protective shoes should be worn when working with truck according to EU standards EN-345:1-S1.

ADDITIONAL FEATURES / TRAILERS

An authorized representative should be contacted if, after delivery, the truck needs to be equipped with additional features, tow hitch equipment for trailers, or other accessories which could influence the stability or braking capacity of the truck.

Additional Specifications and Dimensions

SPECIFICATIONS

TECHNICAL DATA-STANDARD VERSION

Descriptions of technical data are according to VDI 2198 and are only provided for standard trucks. Non-standard types, additional equipment, etc. could produce other values. The manufacturer reserves the right to make technical modifications and additions.

EN STANDARDS

Sustained noise levels must be < 70dB (A); Refer to EN 12053 Standard

NOTE: Continuous sound levels are averaged values according to standard regulations, taking into account the noise level when driving, lifting and idling. The noise level is measured at the ear.

ELECTROMAGNETIC COMPATIBILITY (EMC)

The manufacturer tests electromagnetic emissions, immunological interference, and electrostatic elimination in compliance with EN12895 and other standards.

CAUTION *No modifications to the electrical system may be made without written approval from the manufacturer.*

APPLICATION CONDITIONS

Ambient temperature operation range:
40°F (5°C) to 105°F (40°C)

DIMENSIONS

(See Tables 1 and 2 on page 5 for Wheel and Truck Dimensions.)

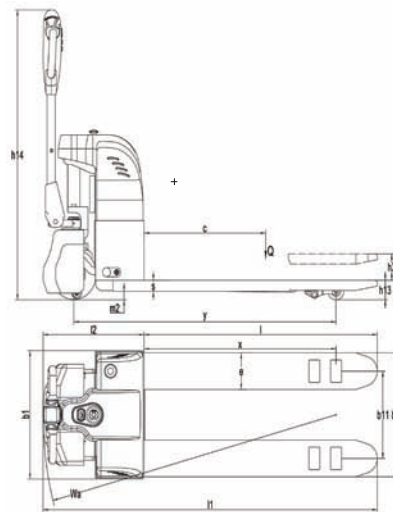


Figure 2 – Dimensions

CAUTION *During continuous operation of the truck in conditions below 40°F (5°C), or in low temperature and high humidity, special protections should be taken to protect electronic gauges and circuitry.*

IMPORTANT: Read and understand all product data plates before use. In case of problems or to purchase spare parts, refer to the series number and part codes on data plates.

Models 21XU81 and 21XU82

E
N
G
L
I
S
H

Additional Specifications and Dimensions (Continued)

Description	Fig. 2 Reference	21XU81	21XU82
Tire material		polyurethane	
Tire size (D x W) drive end		8.66 x 2.75"	
Tire size (D x W) load end		3.0 x 3.66"	
Caster wheels		2.0 x 1.0"	
Number of wheels		1 drive wheel, 2 casters, and 2 load wheels	
Track width (rear) load end	b11	20 5/8"	14 1/8"

Table 1 – Wheel Dimensions

Description	Fig. 2 Reference	21XU81	21XU82
Lift height	h3	4.5"	
Tiller height (in drive position) Min. & Max.	h14	31 1/2 & 46	
Fork height lowered	h13	3.25"	
Overall length	l1	67.5"	
Length to front face of fork	l2	19.5"	
Overall width	b1	27.75"	22"
Fork dimensions	s/e/l	1.89 x 6.3 x 48"	
Overall fork width	b5	27"	20.5"
Ground clearance, center of wheelbase	m2	1.3"	
Aisle width for 800 x 1200 pallet, lengthwise	Ast	76.8"	
Turning radius	Wa	56.8"	

Table 2 – Pallet Truck Specific Dimensions

Transportation and Commissioning

PALLET TRUCK CONVEYANCE

⚠ WARNING *The load capacity of any hoisting equipment used to lift the truck should be adequate. (Carried weight = net weight of truck + weight of battery; refer to data plate.)*

NOTE: Hoisting position is indicated on the chassis by the manufacturer.

Prior to conveyance:

- Place the truck at a safe position.
- Attach to a point of strength on the crane using the hoisting position on the truck.

⚠ WARNING *The point of strength of the crane must be attached to hoisting position to avoid slippage of the truck. During hoisting, the hoisting equipment must be attached to the hoisting position without touching the truck.*

COMMISSIONING

⚠ WARNING *Only battery power may be used to operate the truck. AC power will damage the electric circuitry. Battery connecting cables should be less than 20 feet (6 meters) in length.*

For normal operation after delivery or transportation, the following procedures should be followed:

- Verify that the assembly of all truck parts is complete and will satisfy the job requirements.

- If necessary, install the battery, taking care to avoid damage to the battery cable.
- Charge the battery immediately.
- If the consumer expects to apply a maintenance-free battery as a substitute, verify that the type of battery is compatible with the electronics of the truck and charger. Get approval from the manufacturer if there is any doubt regarding compatibility.

Dayton® Pallet Trucks

Maintaining, Charging and Replacing the Battery

SAFE OPERATION RULES FOR LEAD-ACID BATTERY

Before doing any maintenance on the battery, securely park the stacker in a safe location.

MAINTENANCE STAFF

Charging, repairing, and replacing batteries should only be performed by qualified professionals. Before operating, carefully read the instructions included in this manual regarding battery preparation and charge requirements.

▲ WARNING *The electrolyte in the battery is poisonous and corrosive. Battery maintenance should always be performed while wearing protective goggles and clothing to avoid bodily contact with the battery acid solution.*

▲ WARNING *If clothing, skin or eyes accidentally come into contact with the electrolyte in battery, liberally flush the affected parts with clean water and consult a doctor immediately. Any spilled electrolyte must be neutralized as soon as possible.*

FIRE PROTECTION

Smoking and any other sources of ignition are strictly prohibited near the battery. The battery should be stored and charged at least 6 feet (2 meters) away from any flammable substance. Batteries should be stored in a well ventilated location with fire protection equipment.

MAINTENANCE OF BATTERY

1. Keep all screw caps on the battery cells dry and clean. Battery posts and cable terminals should be tightened and covered with clean dielectric grease. Terminal connections and battery posts should be covered with anti-slip insulated covers.
2. Cables connecting the cells should have good contact. Check nuts for loosening or slippage and tighten if necessary.
3. Keep the surface of the battery clean and dry. After each charge, wipe any acid stains with a cotton cloth, and rinse the surface clean.
4. Over-charging or rapid discharging of the battery should be avoided. Forcibly charging or discharging the battery will shorten its life.
5. To prevent a short circuit or explosion, conductive objects (including metal tools) should not be placed on the battery.
6. Harmful impurities (solid or liquid) cannot be allowed to enter the battery cells. When using a hydrometer to check electrolyte, its surface should be clean.
7. After battery is discharged, it should be recharged in a timely fashion. Maximum charging intervals should not exceed 24 hours. On cold days, if the battery doesn't take a charge, move it indoors and allow it to warm to room temperature.
8. If the battery will not be used for a long period of time, it should be fully charged prior to storage, and a full charge should be reapplied monthly.
9. If fluid levels decrease, distilled water (not electrolyte) should be added. Levels should be even across cells.
10. If a cell malfunctions, the cause should be determined and the malfunctioning cell should immediately be repaired or replaced.
11. When charging batteries, ventilation equipment should be used to exhaust any potentially harmful or flammable gases. There is a risk of hydrogen explosion in poorly ventilated conditions.
12. The weight and dimension of the battery have a significant effect on the stability of the truck. Any change of battery type should be approved by manufacturer.
13. Heavy current discharges (e.g. the driving motor and lifting motor operate simultaneously) are not allowed.

NOTE: A sealed Various Rechargeable Lead Acid battery (VRLA) is supplied with these pallet truck, which requires less maintenance.

BATTERY DISPOSAL

Scrap batteries must be disposed of in an environmentally-friendly way and in accordance with the regulatory authorities.

Models 21XU81 and 21XU82

Maintaining, Charging and Replacing the Battery (Continued)

BATTERY REMOVAL AND INSTALLATION

▲ WARNING *Park the truck on level ground. Cover electrodes with a rubber gasket to avoid a short circuit. When removing the battery, adjust the battery cables to keep them from impeding the battery's removal.*

- Engage the emergency stop and turn electric lock switch to "OFF" position.
- Disconnect the battery.
- Remove the battery using a hoist or crane.

NOTE: Installation procedure is the reverse of the above sequence.

▲ WARNING *After installing, check for damage on all cables and plugs. Battery posts must be covered by an insulating cap for protection. When connecting the battery, the truck must be turned completely off to avoid arcing.*

▲ CAUTION *Use caution when covering the battery case. Avoid putting fingers between the cover and case. Before using the truck, ensure the battery and cover are properly secured.*

BATTERY CHARGING

▲ WARNING *Battery charging must comply with any instruction manuals provided by the battery and charger suppliers. These pallet trucks are equipped with a charger that is specific to the battery supplied.*

▲ WARNING *Before connecting the charger to battery, make sure the charger, emergency switch, and electric lock switch are in the off position. Charge the battery in a dry and air-circulated*

environment and keep away from fire sources. The battery should be charged regularly (once per month at a minimum).

When the charge is low, an alarm will flash on the battery meter. When this happens, discontinue use and charge the battery immediately.

AUTOMATIC CHARGER

A fully automatic smart charger is included with the pallet truck. The charger indicator light is red when the battery is charging. The charger will automatically adjust the current flow according to residual capacity of the battery, which ensures an optimum charge. When complete, the charger indicator lights green and the charger automatically stops. A full charging course generally lasts 5-7 hours.

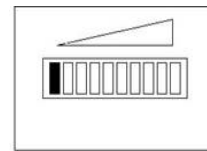
IMPORTANT: Before charging, make sure no metal objects are on the battery. Check for any obvious faults on all cables and plugs. Safety instructions, including common rules and battery charging preparation procedures, should be strictly observed. During charging, cock caps for each cell should be opened to maintain air circulation conditions.

BATTERY METER

The level of battery charge is indicated on the battery meter with ten indicator bars, each indicating 10%. As the charge is consumed, bars will descend downwards from the top. An "Insufficient Capacity" reading will appear when the battery is at 30% capacity, at which time the battery should be recharged. If the battery reaches 20%, the meter will flash and the lifting function of truck will be automatically cut off and locked until

the battery is recharged.

BATTERY DISCHARGED



BATTERY FULLY CHARGED

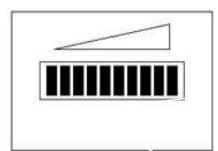


Figure 3 Battery Meter Indicator Bars

NOTE: If the battery meter indicates insufficient capacity immediately upon lifting, the battery should be charged to at least 70% of capacity before resuming lifting.

Dayton® Pallet Trucks

Operation

CONTROL HANDLE FEATURES

1. Reversing button – Emergency directional reverse button.
2. FWD/REV travel button – Variable speed control switch.
3. Horn button
4. Raise button - Moving the fork upward.
5. Lower button - Moving the fork downward.

STARTING THE TRUCK

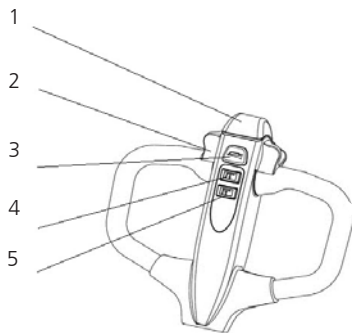


Figure 4– Control Handle Features

▲ WARNING Confirm that no person is too close before starting and operating the truck or lifting any cargo.

ROUTINE CHECKS BEFORE STARTING UP

- Check for any external truck defects (especially wheels and pallets).
- Check that the battery is firmly fixed and cables are connected properly.

TRUCK START UP

- Engage the emergency brake.
- Insert key into electric lock switch and turn right to the “ON” position.
- Turn on the emergency switch.
- Check the battery meter for adequate

capacity.

- Check the function of horn.
- Check the braking functions of the control handle.

TRUCK OPERATION

STARTING UP, DRIVING AND PARKING

▲ CAUTION Caution must be used when starting up and driving the truck. Riding of any kind is prohibited unless expressly permitted by notations on the truck.

EMERGENCY STOPPING

To stop suddenly, press the emergency brake switch. All electric control functions will be cut off.

SUDDEN BRAKING

If you need to brake suddenly, release the control handle. The control handle will rise into braking range (B1) and the truck will automatically brake (emergency stop).

▲ WARNING If the control handle rises slowly when released, locate the problem and repair it. If necessary, please replace the gas piston within the handle.

STARTUP

IMPORTANT: The battery case must be checked and covered before starting up the truck.

STARTING THE TRUCK

Driving speed is controlled by the controller.

- Move the control handle into driving range “F”.
- Adjust the controller to the direction you want to move and the truck will move in the selected direction.

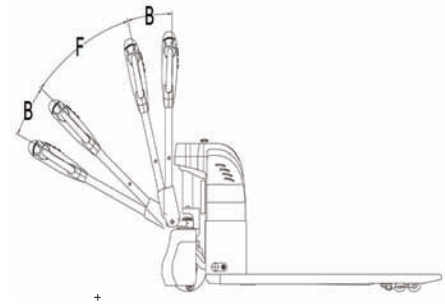


Figure 5 – Control Handle Driving and Braking Range of Motion

STEERING

Swing the control handle to the left or right to steer.

DRIVING ON A SLOPE

▲ WARNING Operator should stand uphill of the load when traveling on a slope. Non-uniformly loaded cargo must be loaded in an upward direction of the slope. Make sure the area downhill from the truck is clear should any slippage occur. When traveling downhill, pull the handle downward from the full upright position and then release it as needed to utilize the electromagnetic brake and control the speed and the direction of the truck.

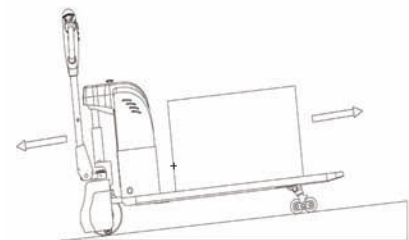


Figure 6 – Movement on a Slope

Models 21XU81 and 21XU82

Operation (Continued)

BRAKING

▲ WARNING *The operator must understand that braking performance is subject to surface conditions.*

There are three methods of braking on this truck:

- Electromagnetic braking (control handle)
- Reverse current braking (controller)
- Sensor braking (release braking)

ELECTROMAGNETIC BRAKING

IMPORTANT: In emergency situations, the truck should be stopped by electromagnetic braking (control handle) only.

- Move the control handle upwards or downwards into braking range (B) and the driving motor will stop mechanically.

NOTE: When the control handle is released, it will move to braking range (B1) automatically.

After parking the truck, the electromagnetic brake serves as the parking brake.

REVERSING CURRENT BRAKING

NOTE: In case of control system or driving power malfunction, it is possible to use reverse braking.

- Rotate the controller in the direction opposite of driving until the truck has stopped.
- Release the controller.

INERTIA BRAKING

After releasing the controller, it will return to the neutral position and the truck will stop by motor inertia. Note that the rate of braking is subject to the

position of controller.

Operation (Continued)

▲ WARNING *If inertia braking is removed by maintenance staff and the controller is set at neutral position, the truck can be stopped only by electromagnetic braking and reverse current braking.*

CARGO LOADING/UNLOADING

▲ WARNING *Before loading cargo, the operator must confirm that cargo is properly placed on the pallet and the weight of the cargo is within the rated load capacity of the truck. Carrying full capacity loads for extended periods is prohibited.*

- The forks should extend the full length of the bottom of the cargo.
- The "Up" and "Down" buttons will lift and lower the load at a fixed speed.

LIFTING OF FORKS

- Press the "Raise" control button until desired height is achieved.

LOWERING OF FORKS

- Press the "Lower" control button to lower the forks to the required height.

PARKING

IMPORTANT: Parking the truck on a slope is strictly prohibited. Forks must be lowered to their lowest height when parking.

- Lower the forks.
- Turn electric lock switch to the "OFF" position and take out the key.

Maintenance

SAFETY OPERATION AND ENVIRONMENTAL PROTECTION

The instructions in this section should be performed based on the time intervals

specified in the Maintenance List.

▲ WARNING *No part of the truck, especially safety devices, may be changed without the manufacturer's permission. Altering the travel speed of the truck is strictly prohibited. All spare parts from the manufacturer are qualified by Quality Assurance Authorities. To ensure safe and reliable truck operation, only spare parts from the manufacturer should be used. Replaced parts, including oils and fuels, must be disposed according to environmental protection regulations.*

MAINTENANCE SAFETY RULES

MAINTENANCE STAFF

Repair and maintenance should only be performed by qualified professionals who have been trained by the manufacturer.

LIFTING THE TRUCK

Hoisting equipment used to lift the truck should be safe and reliable. When the truck is lifted, necessary precautions should be taken to avoid slipping or overturning of the truck (a wedge block or wood block can be applied). The truck should be lifted only when the forks are fixed and adequately strong connecting cables are applied.

CLEANING

Using flammable fluids to clean the truck is strictly prohibited. Before cleaning, safety measures must be taken to avoid sparking (e.g. caused by short circuit). Battery work should only be performed after cutting off the power. Electric elements and electronic assemblies should only be cleaned using compressed air or a nonconductive, anti-static brush.

Dayton® Pallet Trucks

Maintenance (Continued)

▲ WARNING *If the truck is cleaned with a high pressure washer, all electric elements and electronic assemblies should be covered to avoid a functional fault. Cleaning with a steam nozzle is prohibited.*

ELECTRICAL SYSTEM

Work on the truck's electrical system should only be performed by trained professionals. Protective measures should be taken to avoid electric shock. Before beginning work, separate the battery socket to turn off power to the truck.

WELDING

To avoid damage of electric and electronic assemblies, assemblies should be removed from the truck before welding.

INSTALLATION

After repairing or replacing hydraulic components, electric elements, and electronic assemblies, confirm that all components are at original positions before resuming use.

WHEELS

Wheel quality greatly affects the stability and driving performance of the truck. Any change of wheels should be approved by the manufacturer. During replacement of wheels, the truck must be kept in a horizontal position. Wheels must be replaced in pairs, (e.g. both left and right).

HYDRAULIC OIL LINE

The oil line should be replaced every six years. Hydraulic oil should be replaced at the same time.

DAILY MAINTENANCE (BEFORE EACH SHIFT)

1. Check the battery's acid levels daily. Note that the acid level will rise during recharging.
2. Check battery terminals and cables for proper fit.
3. Make sure the battery box is securely fastened in its holder.
4. Check for any oil leakage.
5. Check the horn.
6. Check the functionality of the transport and parking brakes.
7. Check the frame and wheels for any signs of damage.

MAINTENANCE AND INSPECTION

Complete and professional maintenance is an important part of safe pallet truck operation. Neglecting maintenance will cause premature failure of the truck and potential danger to people and equipment.

NOTE: Maintenance cycles stated in the instruction manual refer to single shift operation under normal conditions. Under dusty conditions, extreme temperature variations, or when operating multiple shifts, maintenance cycles should be shortened.

Maintenance should be performed according to the following intervals under normal conditions:

W1 = every 50 working hours or at least once per week.

M3 = every 500 working hours or at least once every three months.

M6 = every 1000 working hours or at least once every six months.

M12 = every 2000 working hours or at least once per year.

For newly commissioned trucks, the following additional maintenance should be done:

After 50 hours to 100 hours of operation or after 2 months of use:

- Check for any loose nuts on the wheels and tighten as necessary.
- Check for any leakage of hydraulic parts and tighten fittings as required.
- Replace the hydraulic filter.

MAINTENANCE SCHEDULE

Refer to Table 3 on pages 11 and 12 for weekly, monthly and yearly schedules.

Models 21XU81 and 21XU82

Maintenance (Continued)

Maintenance Area	Action	1 Week	3 Months	6 Months	1 Year
Chassis and Truck Frame	Inspect for any damage of loading bearing parts		•		
	Inspect all joints of bolts		•		
Drive Wheel	Inspect for noise and leakage in drive system		•		
	Check drive system oil levels		•		
	Replace lubricants			#	•
Load Wheels	Inspect for wear and damage		•		
	Inspect bearings inside wheels and ensure a proper fit ‡		•		
Steering System	Inspect steering operation motion		•		
Braking System	Inspect brake performance and adjust as needed	#	•		
	Inspect reset function of gas piston; check for leakage or damage		•		
	Check for brake wheel wear		•		
	Inspect brake connection and adjust if necessary		•		
Lifting Equipment	Check performance, look for wear		•		
	Visually inspect for any blockages in the load wheels		•		
	Check for any wear or damage to the edges of forks and pallet	#	•		

Table 3 – Maintenance Schedule

- (•) Standard
- (#) Refrigerated warehouse
- (†) After initial 100 hours of operation, check for any loose nuts on wheels and tighten as necessary
- (‡) After initial 100 hours of operation, check for any leakage of hydraulic parts and tighten as required
- (‡‡) 500 hours after initial operation

Dayton® Pallet Trucks

Maintenance (Continued)

Maintenance Area	Action	1 Week	3 Months	6 Months	1 Year
Electrical System	Check performance		•		
	Check for safety and reliability of cable connections, check for damage		•		
	Inspect fuses for proper amperage ratings		•		
	Check safety, reliability, and function of switches		•		
	Inspect connections, replace worn parts if necessary		•		
	Inspect function of alarm equipment	#	•		
Motor	Check for carbon brush wear		•		
	Check that motor is securely attached		•		
	Clean motor housing with vacuum, inspect for commutator wear (DC motor only)		#	•	
Battery	Check the density and capacity of acid, check the battery voltage	#	•		
	Inspect for safety hoods and dielectric grease on connection terminals	#	•		
	Clean battery connections, inspect for tightness of fit	#	•		
	Check for damage to battery cables, replace if necessary		•		
Lubrication	Check grease fittings for proper lubrication, add grease as needed	#	•		
Integrated Measurement	Check for faults in grounding of the electrical system				•
	Check driving speed and braking distance				•
	Check lifting and lowering speed				•
	Inspect safety devices		•		
Demonstration	Commissioning under load rating		•		
	After the above maintenance, the truck is certified to be reliable for the operator	#	•		

Table 3 – Maintenance Schedule (Continued)

Models 21XU81 and 21XU82

Maintenance (Continued)

MAINTENANCE AND REPAIR PREPARATIONS

Take necessary safety precautions to avoid accidents during repair and maintenance by:

- Parking the truck safely
- Pressing the emergency parking switch to turn off power.

▲ WARNING *If it becomes necessary to lift the truck for maintenance or repair, refer to the related instructions in the "Transportation and Commissioning" section for precautions to be taken when lifting the forks or lifting the truck.*

INSPECTION OF HYDRAULIC OIL LEVEL

- Prepare the truck to be repaired or maintained.
- Lower the forks and carriage to their lowest height.
- Remove the two screws, securing the cover.
- Open the cover.

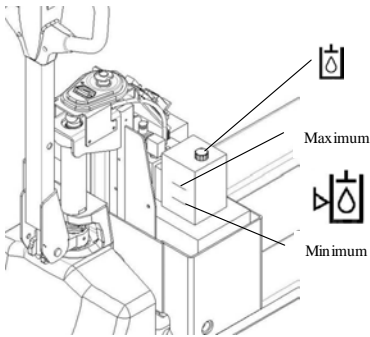


Figure 7 – Oil level

- Check the capacity of the hydraulic oil in the oil tank.
- Reassemble by reversing the above steps.

INSPECTION OF ELECTRICAL FUSES

- Prepare the truck to be repaired or

maintained.

- Remove the two screws securing the cover. See Figure 8.
- Open the main cover.
- Consult the chart below to verify the correct rating for all fuses. Replace if necessary.

Code	Fuse Type	Rating
FU1	Control circuit	10A
FU2	Battery indicator	0.5A
FU01	Main circuit	60A
FU02	Lift control	60A
FU3	Fan	1.0A

Table 4 – Fuse Types and Ratings
USING THE TRUCK AFTER MAINTENANCE

Complete the following operations before using the truck:

- Clean the truck.
- Check the braking function.
- Check the function of the emergency parking switch.
- Check the function of the horn.

STORAGE OF THE PALLET TRUCK

If the truck will be unused for 2 or more months, it should be parked in a cool (non-freezing) and dry location. The following measures should be taken before, during, and after storage.

NOTE: During storage, the pallet truck should be elevated to keep the wheels completely off the ground. This will protect the wheels and the bearings inside wheels from damage. In the case of storage period of over 6 months, contact the manufacturer for additional measures.

PREPARATIONS BEFORE STORAGE

- Clean the pallet truck thoroughly.
- Check the braking function.
- Check the hydraulic oil capacity, add

fluid if necessary.

- Apply oil or grease to fittings as needed.
- Consult detailed lubrication list to lubricate the truck.
- Recharge the battery.
- Disconnect and clean the battery. Apply dielectric grease to the battery electrodes.

NOTE: In addition to the above, instructions provided by the battery supplier should also be observed.
MEASURES TO BE TAKEN DURING STORAGE

Every two months: charge the battery.

IMPORTANT: It is important to recharge the battery regularly. Batteries allowed to completely discharge may become damaged and require replacement.

RE-COMMISSIONING

- Clean the pallet truck thoroughly.
- Consult detailed lubrication list to lubricate the truck.
- Clean the battery, apply dielectric grease to electrode bolts and connect the battery.
- Recharge the battery.
- Check for any moisture in the gear oil, replace if required.
- Check for any moisture in the hydraulic oil, replace if required.
- Start the pallet truck. Check all safety functions before using.

BATTERY OPERATION

In the case of a problem in the electrical system, brush all exposed electrical connections with contact cleaner. Repeat this step to remove oxidation on controller connections.

▲ WARNING *Electromagnetic braking should be tested immediately after re-commissioning.*

Dayton® Pallet Trucks

Electrical and Hydraulic Flow Diagrams

E
N
G
L
I
S
H

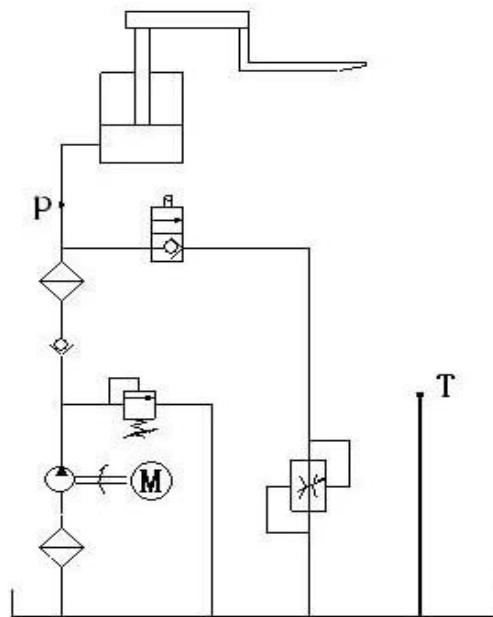


Figure 8 – Hydraulic Flow Diagram

Models 21XU81 and 21XU82

Electrical and Hydraulic Flow Diagrams (Continued)

E
N
G
L
I
S
H

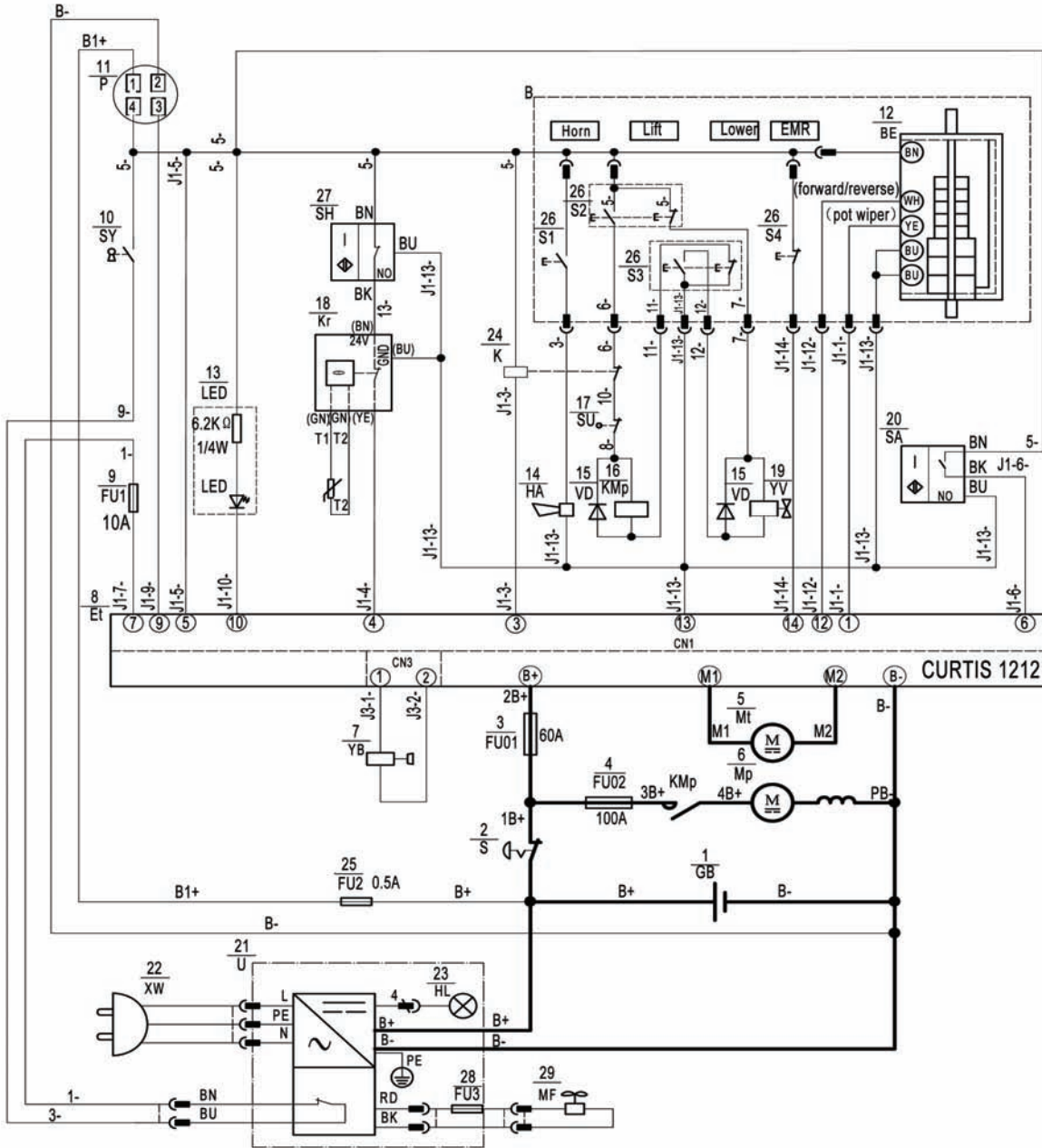


Figure 9 - Circuit Diagram

Dayton® Pallet Trucks

E
N
G
L
I
S
H

Electrical and Hydraulic Flow Diagrams (Continued)

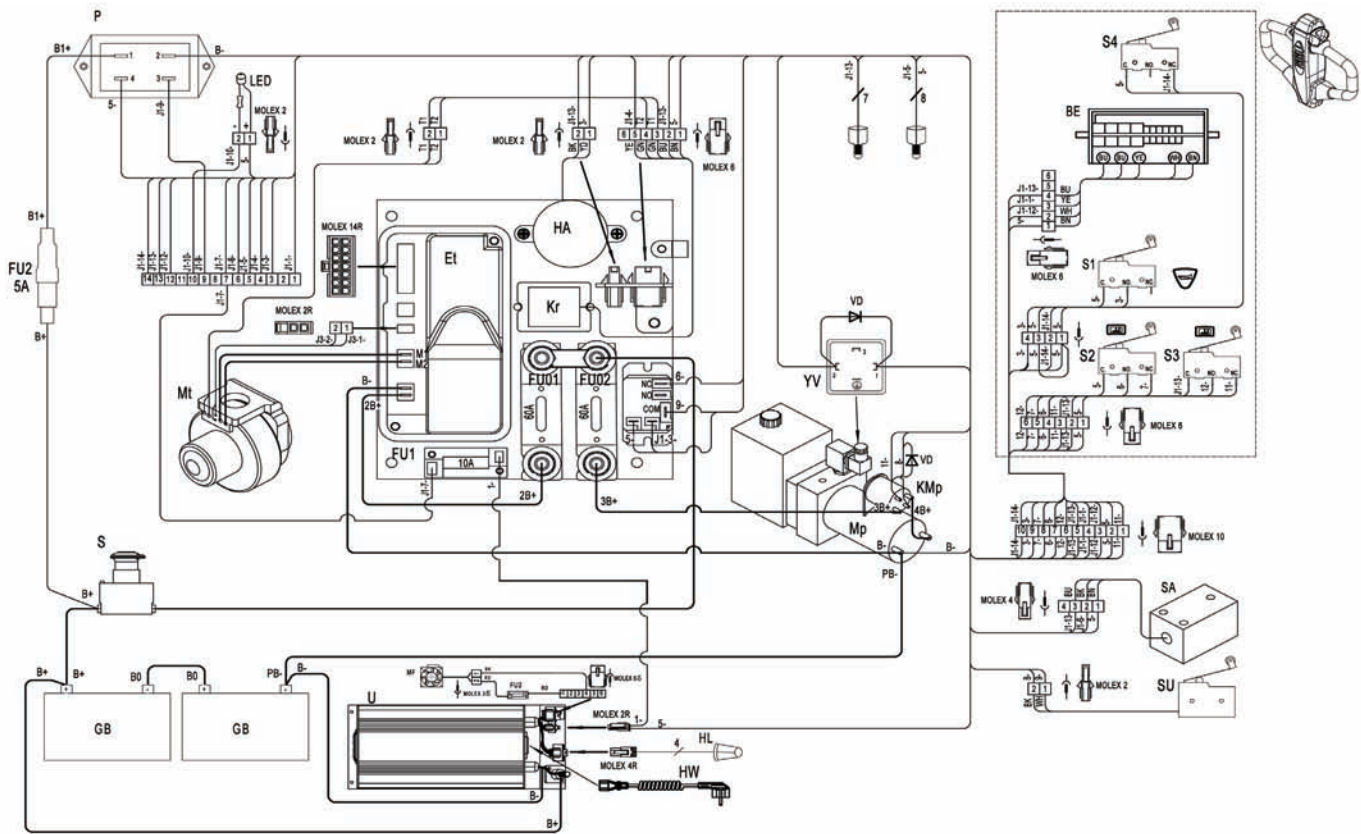


Figure 10 – Connection Diagram

Models 21XU81 and 21XU82

Electrical and Hydraulic Flow Diagrams

(Refer to pages 14 through 16)

Symbol	Description	Part No.	Qty.
GB	Battery, 12V/60Ah	MH21XU8201G	1
S	Emergency button, S100/80	MH21XU8202G	1
FU01, FU02	Fuses, 60A	MH21XU8203G	2
Mt	Motor for traction,DC24V	MH21XU8204G	1
Mp	Motor for lifting, DC24V	MH21XU8205G	1
YB	Brake, DC24V	MH21XU8206G	1
Et	Controller,CURTIS 1212P-2501	MH21XU8207G	1
FU1	Fuse, 10A	MH5RTA716G	1
P	Battery indictor, CURTIS 906	MH21XU8208G	1
LED	LED light for fault	MH21XU8209G	1
HA	Buzzer, HYD-4216W 24VDC	MH21XU8210G	1
VD	Diode, 1N5408	+	2
KMp	Contactora for lifting	MH21XU8211G	1
SU	Micro switch, WS1-Z5-W200R200	MH21XU8212G	1
YV	Electromagnetic valve	MH21XU8213G	1
SA	Inductive sensor, NBN5-FT-E2	MH21XU8214G	1
U	Charger kit, AC115V/10A	MH21XU8215G	1
XW	Spring line, USA type	MH21XU8216G	1
HL	Charging indicator	MH21XU8217G	1
Kr	Protect module, BD-W-115	MH21XU8218G	1
S1, S4	Micro switch kit, SS-5GL2,for horn and EMR	MH21XU8219G	1
S2, S3	Micro switch kit, SS-5GL2, for lift and lower	MH21XU8220G	1
BE	Accelerator, BD-190	MH21XU8221G	1
K	Relay, ARP12F-1C 24VDC	MH21XU8222G	1
FU2	Fuse, 0.5A	MH21XU8223G	1
MF	Fan, ADDA, DC12V	MH21XU8266G	1
FU3	Fuse, 1A	MH21XU8267G	1

Table 5 – Electrical Interface Legend

(+) Not available

For Repair Parts, call 1-800-323-0620

24 hours a day – 365 days a year

Please provide following information:

- Model number
- Serial number (if any)
- Part description and number as shown in parts list

E
N
G
L
I
S
H

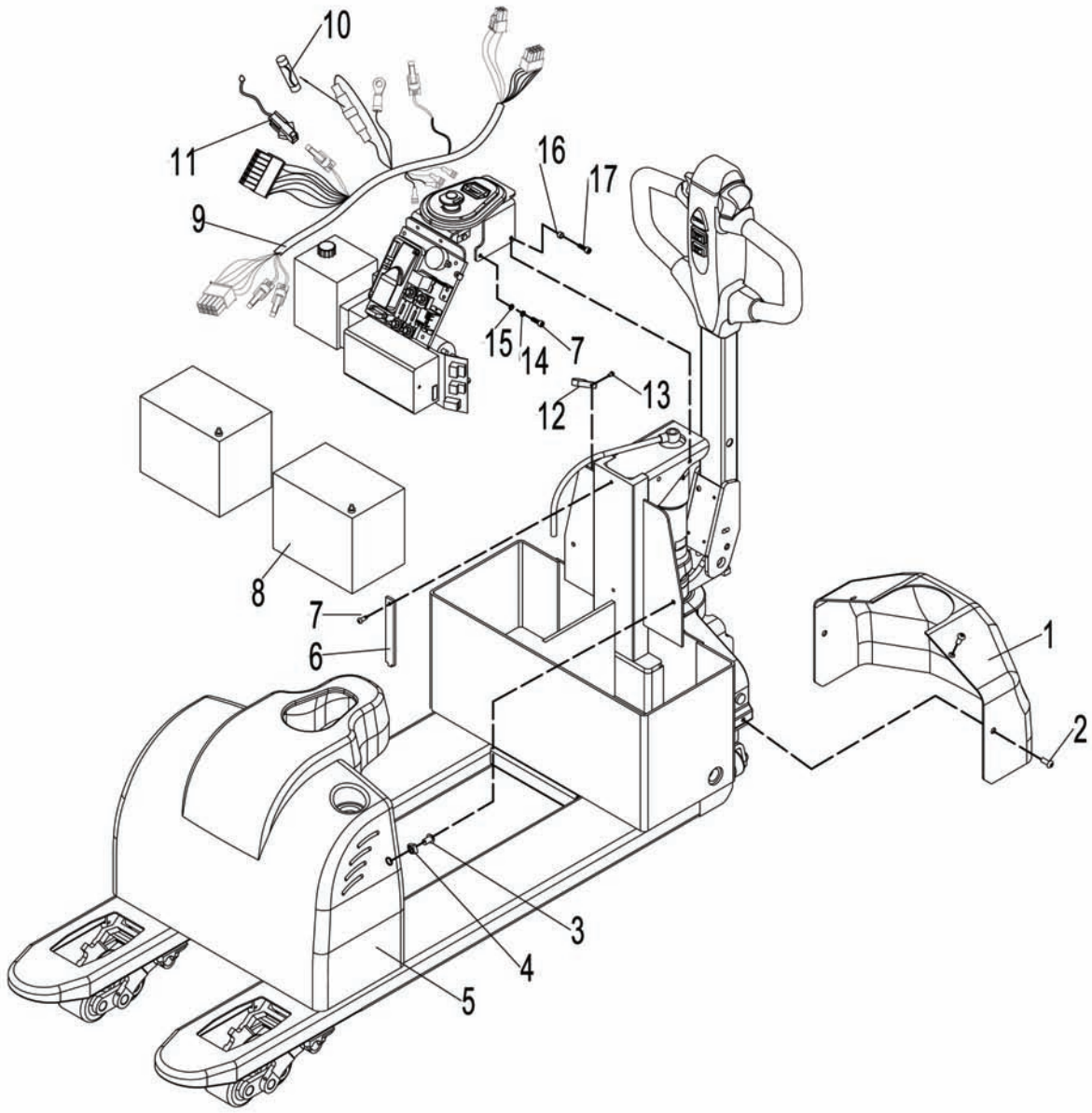


Figure 11 – Repair Parts Illustration for Pallet Truck

Repair Parts List for Pallet Truck

Reference Number	Description	Part Number	Quantity
1	Cover for driving wheel	MH21XU8224G	1
2	Screw, M8x20	++	4
	Nut/Screw kit	MH2LEB823	2
3	Screw, M10x20	▲	1
4	Nut, M10	▲	1
5	Cover, for 21XU82	MH21XU8225G	1
5	Cover, for 21XU81	MH21XU8101G	1
6	Holding plate	+	1
7	Screw, M6x16	++	6
8	Battery, 12V/60Ah	MH21XU8201G	1
9	Controlling cable	MH21XU8226G	1
10	Fuse, 0.5A	MH21XU8223G	1
11	LED light for fault	MH21XU8209G	1
12	Fixxing ring for cable	+	3
13	Screw, M4x8	++	3
14	Elastic washer, 6	++	2
15	Flat washer, 6	++	2
16	Washer	+	2
17	Screw, M6x25	++	2

(▲) Available as part of a kit only.

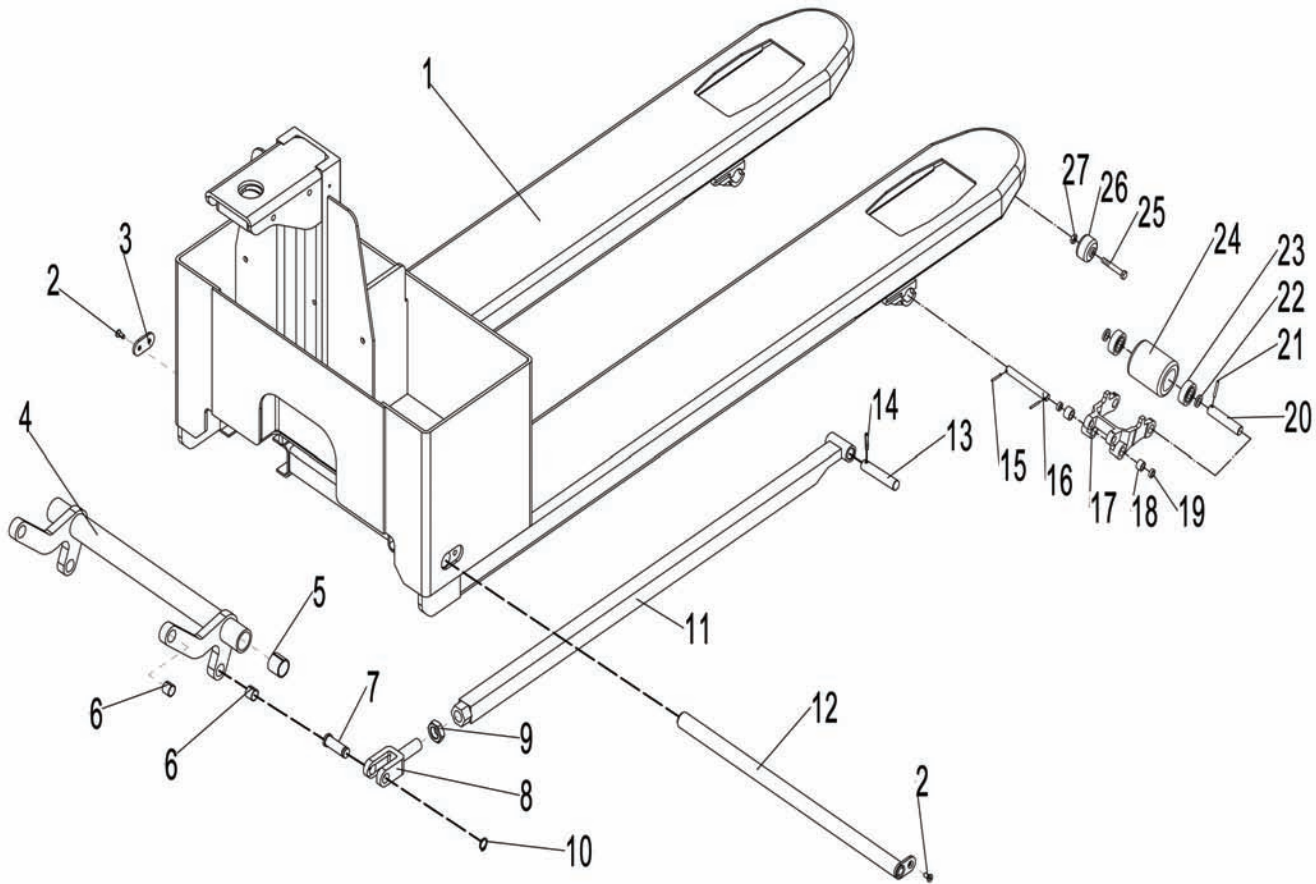
(+) Not available.

(++) Common hardware, not offered as a replacement part.

For Repair Parts, call 1-800-323-0620**24 hours a day – 365 days a year**

Please provide following information:

- Model number
- Serial number (if any)
- Part description and number as shown in parts list

E
N
G
L
I
S
H**Figure 12 – Repair Parts Illustration for Pallet Truck Fork Frame**

Repair Parts List for Pallet Truck Fork Frame

Reference Number	Description	Part Number	Quantity
1	Fork frame	+	1
2	Screw, M6x10	++	3
3	Fixing plate	+	1
	Rocker arm kit (for 20.5" type, 21XU82)	MH21XU8227G	1
	Rocker arm kit (for 27" type, 21XU81)	MH21XU8102G	1
4	Rocker arm	▲	1
5	Bushing	▲	2
6	Bushing	▲	4
7	Axle	MH21XU8228G	2
	Joint kit	MH21XU8229G	2
8	Joint	▲	1
9	Nut, M20x1.5	▲	1
10	Retaining ring, 16	++	2
11	Pushing rod	MH21XU8230G	2
12	Long shaft (for 20.5" type, 21XU82)	MH21XU8231G	1
12	Long shaft (for 27" type, 21XU81)	MH21XU8103G	1
13	Shaft for pushing rod	MH21XU8232G	2
14	Roll pin, 5x28	++	2
15	Roll pin, 5x30	++	4
16	Shaft for frame of roller	MH21XU8233G	2
	Frame of roller kit	MH21XU8234G	2
17	Frame of roller	▲	1
18	Bushing	▲	2
19	Washer	+	4
20	Shaft for roller	MH21XU8235G	2
21	Roll pin, 5x35	++	2
22	Washer	+	4
	Roller kit	MH21XU8236G	2
23	Bearing, 6204	▲	2
24	Roller, 74x93	▲	1
25	Bolt, M10x60	++	2
26	Entry Roller	MHG226G	2
27	Nut, M10	++	2

(▲) Available as part of a kit only.

(+) Not available.

(++) Common hardware, not offered as a replacement part.

For Repair Parts, call 1-800-323-0620

24 hours a day – 365 days a year

Please provide following information:

- Model number
- Serial number (if any)
- Part description and number as shown in parts list

E
N
G
L
I
S
H

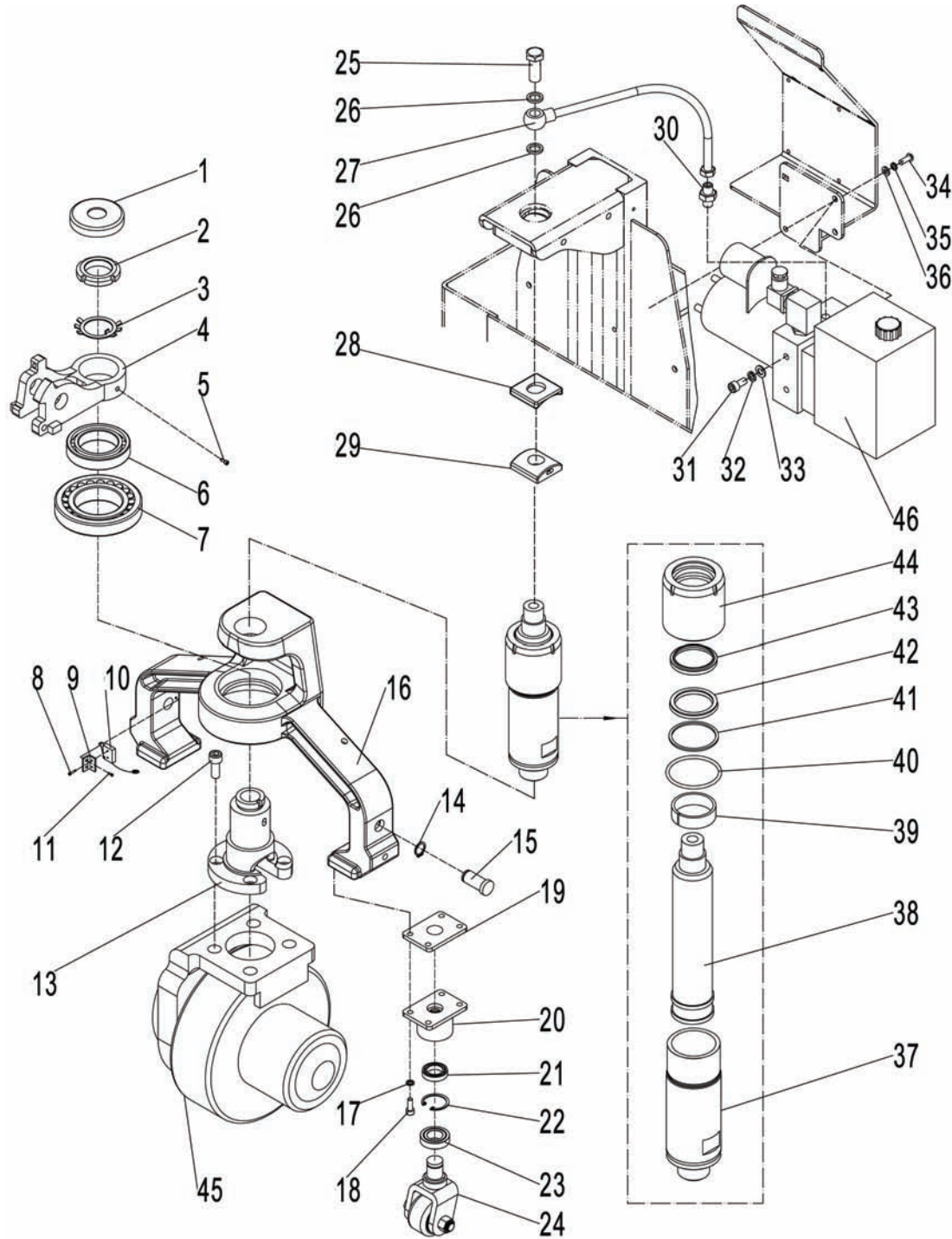


Figure 13 – Repair Parts Illustration for Driving and Lifting Unit

Repair Parts List for Driving and Lifting Unit

Reference Number	Description	Part Number	Quantity
1	Sheath for cable	MH21XU8237G	1
2	Round nut M36x1.5	++	1
3	Lock washer, 36	++	1
4	Seat for handle	MH21XU8238G	1
5	Screw, M6x16	++	1
6	Bearing, 6010	++	1
7	Bearing, 30212	++	1
8	Screw, M2x10	++	1
9	Fixing plate	+	1
10	Micro switch, WS1-Z5-W200R200	MH21XU8212G	1
11	Screw, M4x10	++	2
12	Screw, M10x25	++	4
13	Connecting flange	MH21XU8239G	1
14	Retaining ring, 16	++	2
15	Linking shaft	MH21XU8240G	2
16	Seat of driving wheel	MH21XU8241G	1
17	Elastic washer, 6	++	8
18	Screw, M6x16	++	8
19	Adjusting plate for height	MH21XU8242G	2
20	Seat for castor	MH21XU8243G	2
21	Bearing, 61804	++	2
22	Retaining ring, 32	++	2
23	Bearing, 32904	++	2
24	Castor	MH21XU8244G	2
25	Linking bolt	MH21XU8245G	1
26	Seal Washer	MH21XU8246G	2
27	Oil tube	MH21XU8247G	1
28	Holding seat	MH21XU8248G	1
29	Interim plate	MH21XU8249G	1
30	Joint	MH21XU8250G	1
31	Screw, M8x16	++	2
32	Elastic washer, 8	++	2
33	Flat washer, 8	++	2
34	Screw, M6x16	++	1
35	Elastic washer, 6	++	1
36	Flat washer, 6	++	1
	Hydro-cylinder kit	MH21XU8251G	1
37	Body of cylinder	▲	1
38	Piston rod	▲	1
39	Guide ring, 50x45x15	▲	1
40	O - ring, 56x3.55	▲	1
41	Seal washer	▲	1
42	Y - ring, 45x55x8	▲	1
43	Dust ring, 45x53x6.5	▲	1
44	Screw cover	▲	1
45	Driving wheel kit (see next page)	MH21XU8252G	1
46	Hydraulic station (see page 26)	MH21XU8253G	1

(▲) Available as part of a kit only.

(+) Not available.

(++) Common hardware, not offered as a replacement part.

For Repair Parts, call 1-800-323-0620

24 hours a day – 365 days a year

Please provide following information:

- Model number
- Serial number (if any)
- Part description and number as shown in parts list

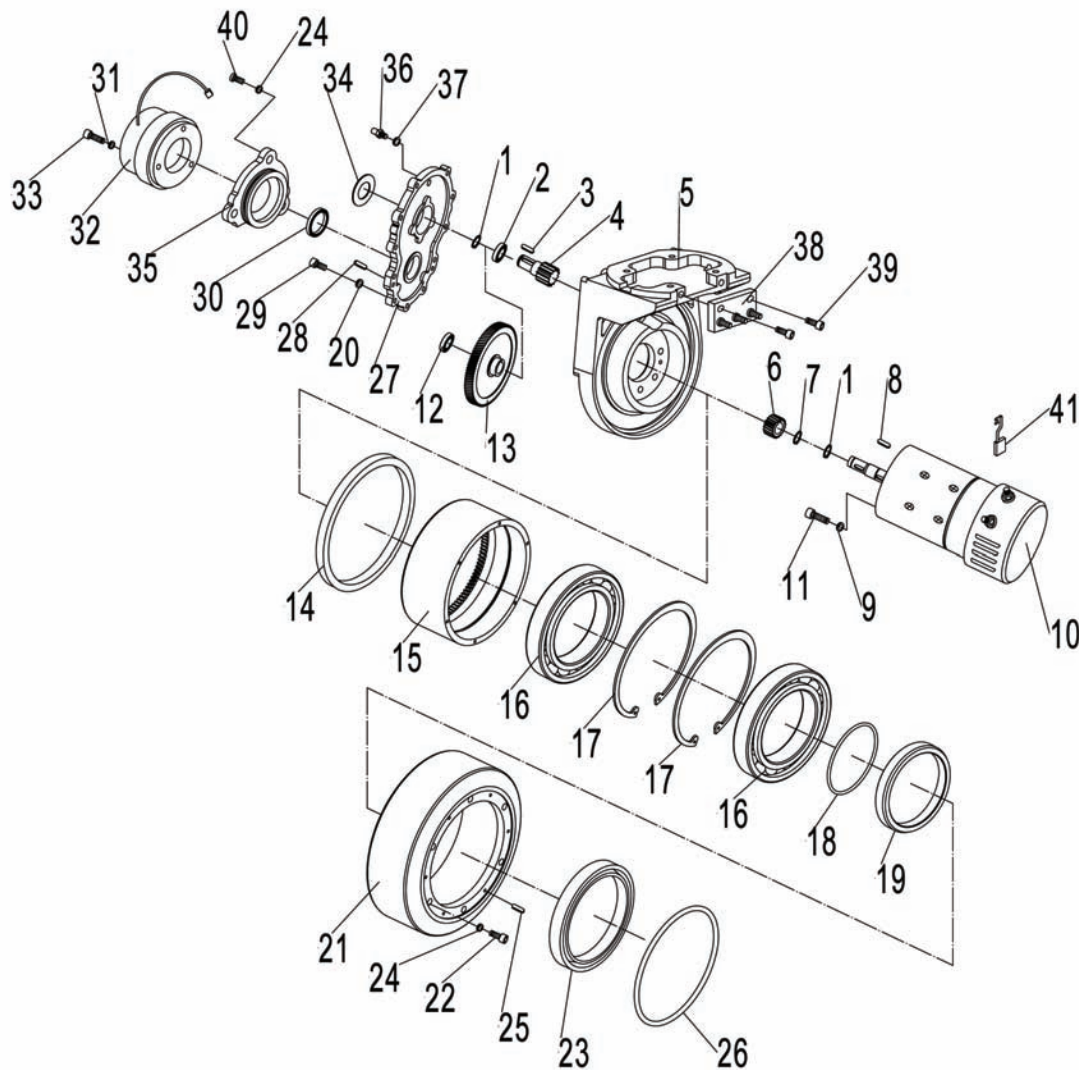


Figure 14 – Repair Parts Illustration for Driving Wheel Unit

Repair Parts List for Driving Wheel Unit

Reference Number	Description	Part Number	Quantity
1	Retaining ring, 17	+	2
2	Bearing, 6203	+	1
3	Key, A5x18	+	1
4	Axle with gear	+	1
5	Motor frame	+	1
6	Gear	+	1
7	Retaining ring, 15	+	1
8	Key, A5x15	+	1
9	Washer, 8	+	5
10	Motor for traction,DC24V	MH21XU8204G	1
11	Screw, M8x25	+	5
12	Bearing, 61905	+	1
13	Gear	+	1
14	Seal ring,160x174x10	+	1
15	Inner gear	+	1
16	Bearing, 61824	+	1
17	Retaining ring, 150	+	1
18	O - ring, 115x2.65	+	1
19	Seat of seal ring	+	1
20	Elastic washer, 6	+	11
	Replacement wheel kit	MH21XU8254G	1
21	Wheel	▲	1
22	Screw, M5x14	▲	10
23	Seal ring	▲	1
24	Elastic washer, 5	▲	10
25	Pin, 5x20	▲	2
26	O - ring, 140x2.65	▲	1
27	Cover	+	1
28	Pin, B6x20	+	2
29	Screw, M6x16	+	11
30	Seal ring, 17x28x7	+	1
	Brake kit	MH21XU8206G	1
31	Elastic washer, 4	▲	3
32	Electromagnetic brake	▲	1
33	Screw, M4x45	▲	3
34	Cover	+	1
35	Protect cover	+	1
36	Screw, M10x1	+	1
37	Seal washer,10	+	1
38	Fixing plate for cable	+	1
39	Screw, M5x16	+	2
40	Screw, M5x25	+	2
41	Carbon brush for motor	+	1

(▲) Available as part of a kit only.

(+) Not available.

For Repair Parts, call 1-800-323-0620

24 hours a day – 365 days a year

Please provide following information:

- Model number
- Serial number (if any)
- Part description and number as shown in parts list

E
N
G
L
I
S
H

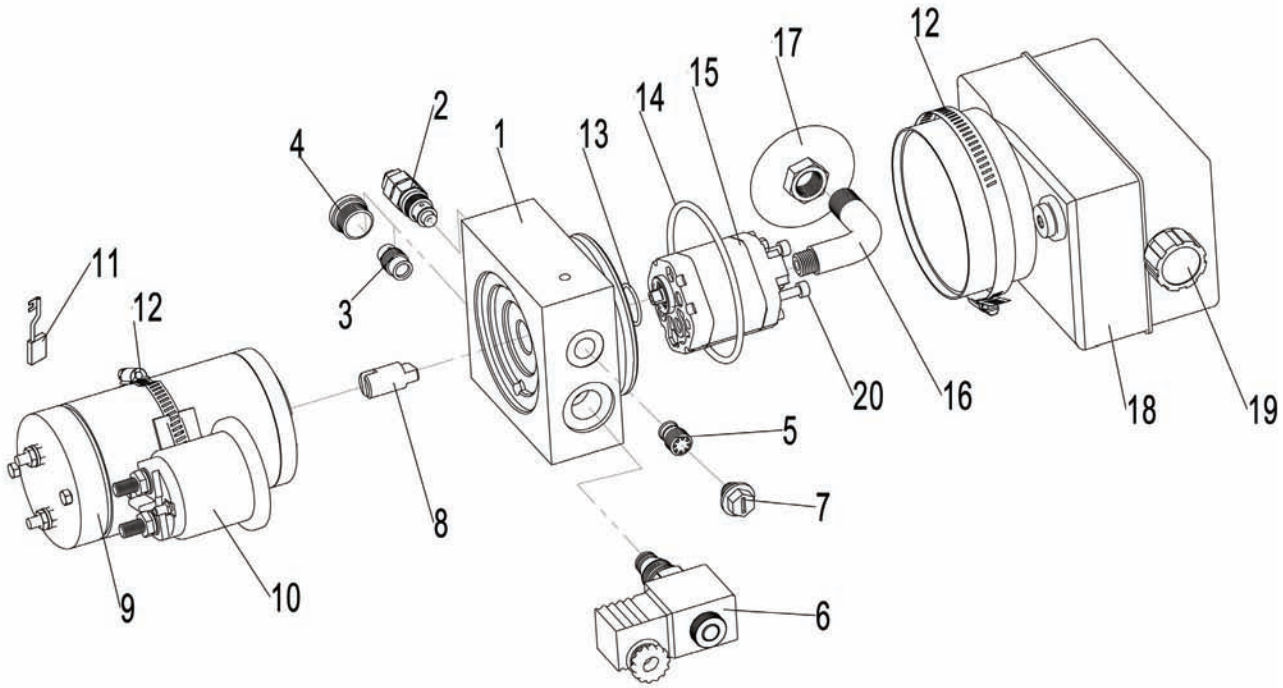


Figure 15 – Repair Parts Illustration for Hydraulic Station Unit

Repair Parts List for Hydraulic Station Unit

Reference Number	Description	Part Number	Quantity
1	Valve plate	+	1
2	Overflow valve	+	1
3	Fill pressure valve	+	1
4	Screw	+	1
5	Flow control valve	+	1
6	Electromagnetic valve	MH21XU8213G	1
7	Drain plug	+	1
8	Coupling	+	1
9	Motor for lifting, DC24V	MH21XU8205G	1
10	Contactator for lifting	MH21XU8211G	1
11	Carbon brush for motor	+	1
12	Hoop	+	2
13	O - ring, 21.2x1.8	+	1
14	O - ring, 87.5x3.55	+	1
15	Gear pump	+	1
16	Oil suction pipe	+	1
17	Filter	+	1
18	Oil tank	+	1
19	Tank cap	+	1
20	Screw, M5x16	+	2

(t) Not available.

For Repair Parts, call 1-800-323-0620

24 hours a day – 365 days a year

Please provide following information:

- Model number
- Serial number (if any)
- Part description and number as shown in parts list

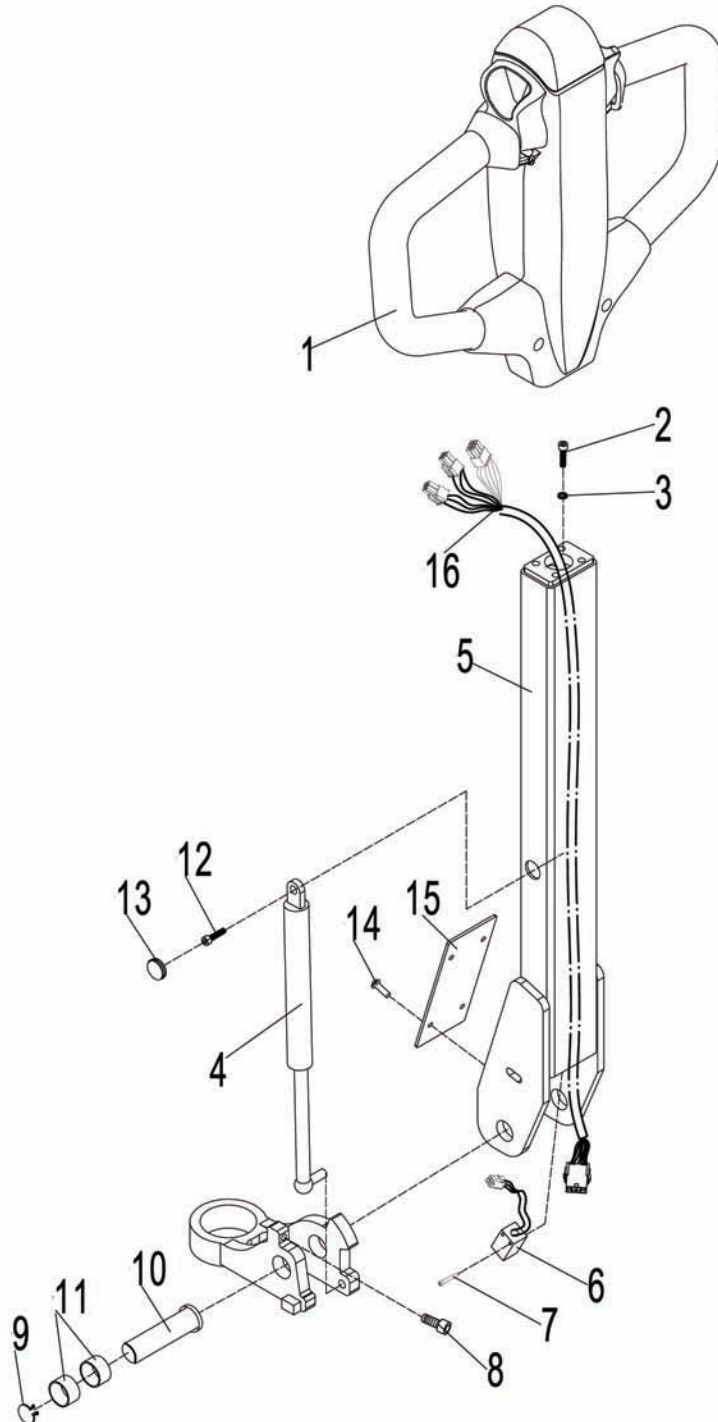


Figure 16 – Repair Parts Illustration for Pallet Truck Handle Assembly

E
N
G
L
I
S
H

Repair Parts List for Pallet Truck Handle Assembly

Reference Number	Description	Part Number	Quantity
1	Control handle Assy.	MH21XU8257G	1
2	Screw, M8x25	++	4
3	Elastic washer, 8	++	4
4	Air spring	MH21XU8258G	1
5	Handle bar	+	1
6	Inductive sensor, NBN5-FT-E2	MH21XU8214G	1
7	Screw, M3x20	++	2
8	Screw, M8x16	++	1
9	Retaining ring, 20	++	1
	Handle axle kit	MH21XU8259G	1
10	Shaft	▲	1
11	Bushing, 20x22x12	▲	2
12	Screw, M8x20	++	1
13	Cover	+	1
14	Screw, M5x10	++	4
15	Cover	+	1
16	Cable for handle	MH21XU8260G	1

(▲) Available as part of a kit only.

(+) Not available.

(++) Not available.

For Repair Parts, call 1-800-323-0620

24 hours a day – 365 days a year

Please provide following information:

- Model number
- Serial number (if any)
- Part description and number as shown in parts list

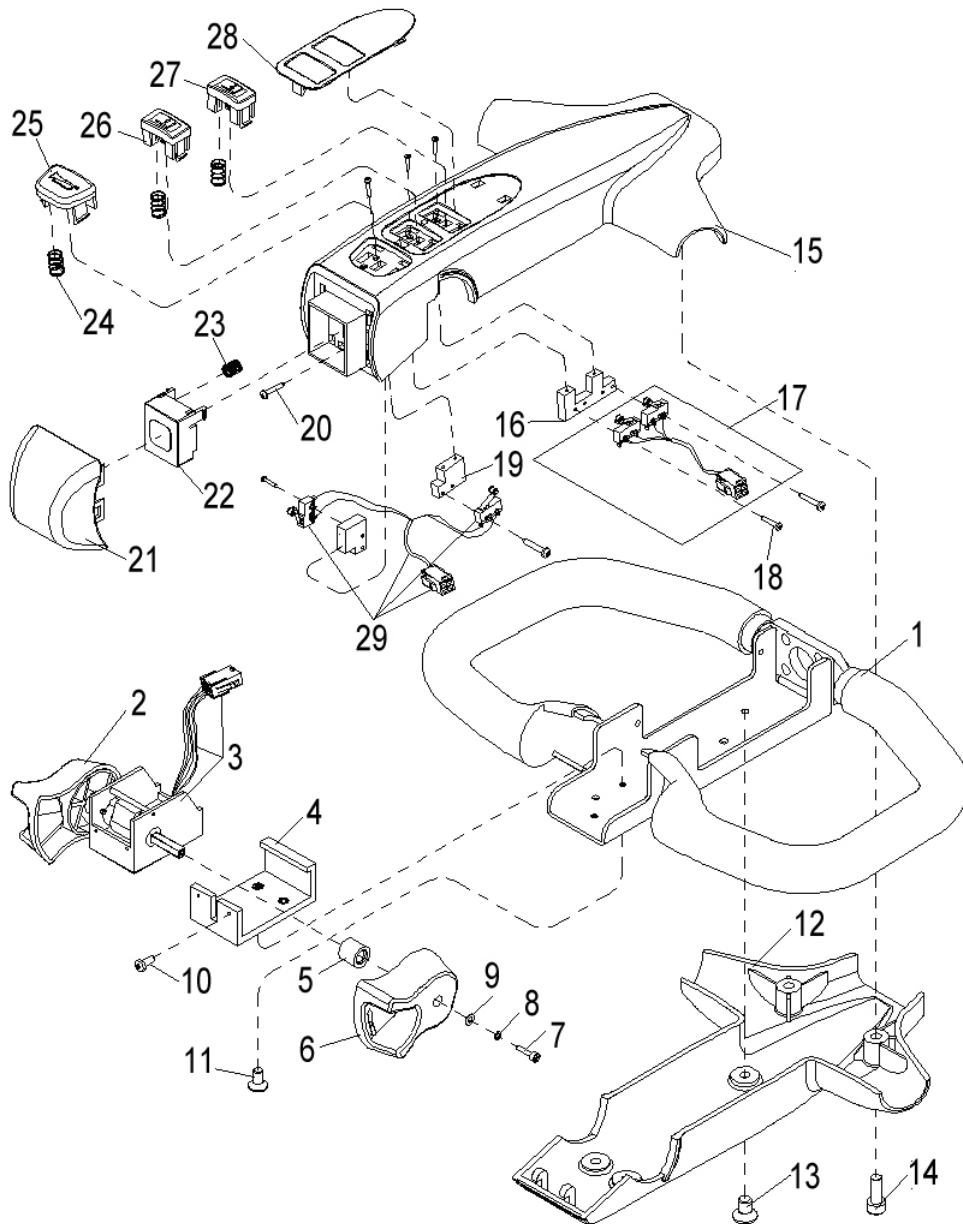


Figure 17 – Repair Parts Illustration for Pallet Truck Control Handle

Repair Parts List for Pallet Truck Control Handle

Reference Number	Description	Part Number	Quantity
1	Handle	+	1
2	Butterfly knob left	+	1
3	Accelerator, BD-190	MH21XU8221G	1
4	Fixing plate	+	1
5	Bushing	+	2
6	Butterfly knob right	+	1
7	Screw, M3x12	++	2
8	Elastic washer, 3	++	2
9	Flat washer, 3	++	2
10	Tapping screw, M3x8	++	2
11	Screw, M4x8	++	3
12	Lower cover	+	1
13	Screw, M6x10	++	4
14	Screw, M6x16	++	2
15	Upper cover	+	1
16	Fixing seat	+	1
17	Switch kit, SS-5GL2,for lift and lower	MH21XU8220G	1
18	Tapping screw, M2.2x13	++	14
19	Fixing seat	+	2
20	Tapping screw, ST2.2x9.5	++	7
	Emergency stop button kit	MH21XU8261G	1
21	Switch cover	▲	1
22	Contact base	▲	1
23	Spring, 0.8	+	4
24	Spring, 0.5	+	6
25	Horn button	MH21XU8262G	1
26	Lifting button	MH21XU8263G	1
27	Lowering button	MH21XU8264G	1
28	Cover	+	1
29	Switch kit, SS-5GL2,for horn and EMR	MH21XU8219G	1

(▲) Available as part of a kit only.

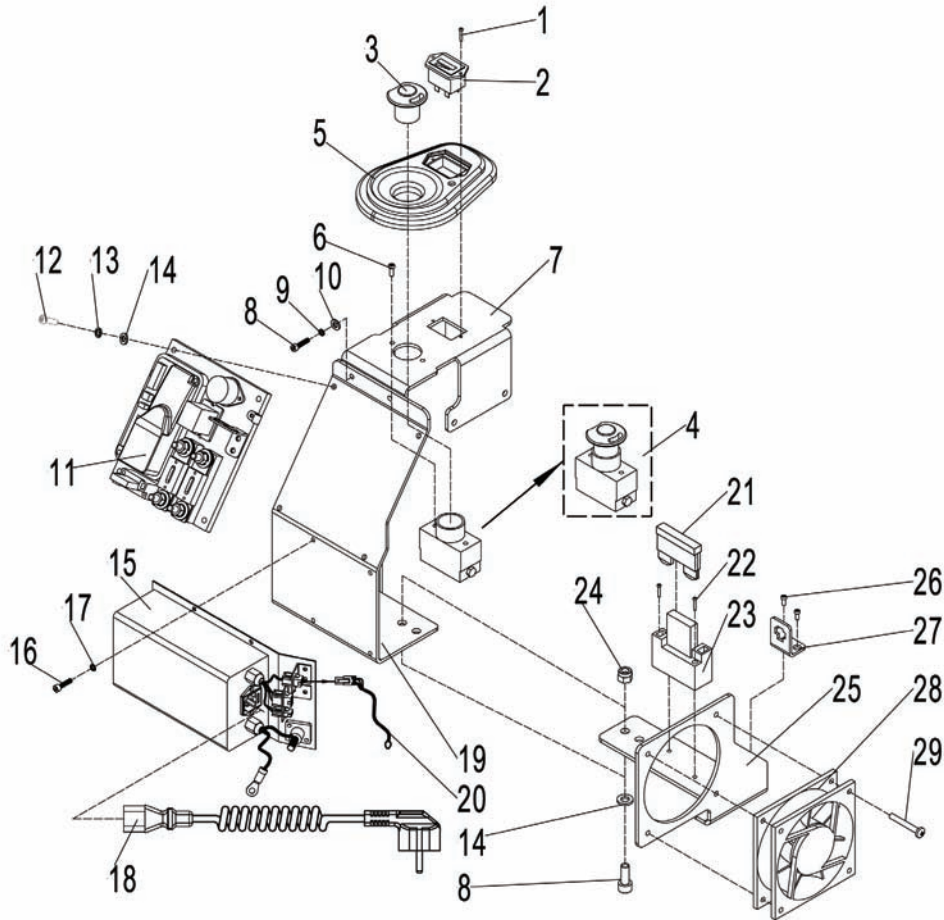
(+) Not available.

(++) Not available.

For Repair Parts, call 1-800-323-0620**24 hours a day – 365 days a year**

Please provide following information:

- Model number
- Serial number (if any)
- Part description and number as shown in parts list

**Figure 18 – Repair Parts Illustration for Pallet Truck Electric Parts**

Repair Parts List for Pallet Truck Electric Parts

Reference Number	Description	Part Number	Quantity
1	Screw, M3x25	++	2
2	Battery indicator, CURTIS 906	MH21XU8208G	1
3	Key for Emergency button	MH21XU8265G	1
4	Emergency button, S100/80	MH21XU8202G	1
5	Cover	+	1
6	Screw, M5x10	+	2
7	Fixing plate	+	1
8	Screw, M6x16	++	4
9	Elastic washer, 6	++	2
10	Flat washer, 6	++	2
11	Controller kit (see next page)	+	1
12	Screw, M5x16	++	4
13	Elastic washer, 5	++	4
14	Flat washer, 5	++	6
15	Charger kit, AC115V/8A	MH21XU8215G	1
16	Screw, M4x12	++	4
17	Elastic washer, 4	++	4
18	Spring line	MH21XU8216G	1
19	Fixing plate	+	1
20	Charging indicator	MH21XU8217G	1
21	Fuse, 1.0A	MH21XU8267G	1
22	Screw, M3x30	++	2
23	Fuse seat	+	1
24	Nut, M6	++	2
25	Fan fixing plate	+	1
26	Screw, M5x10	++	2
27	Fixing plate	+	1
28	Fan, ADDA, DC12V	MH21XU8266G	1
29	Screw, M4x30	++	4

(+) Not available.

(++) Not available.

For Repair Parts, call 1-800-323-0620

24 hours a day – 365 days a year

Please provide following information:

- Model number
- Serial number (if any)
- Part description and number as shown in parts list

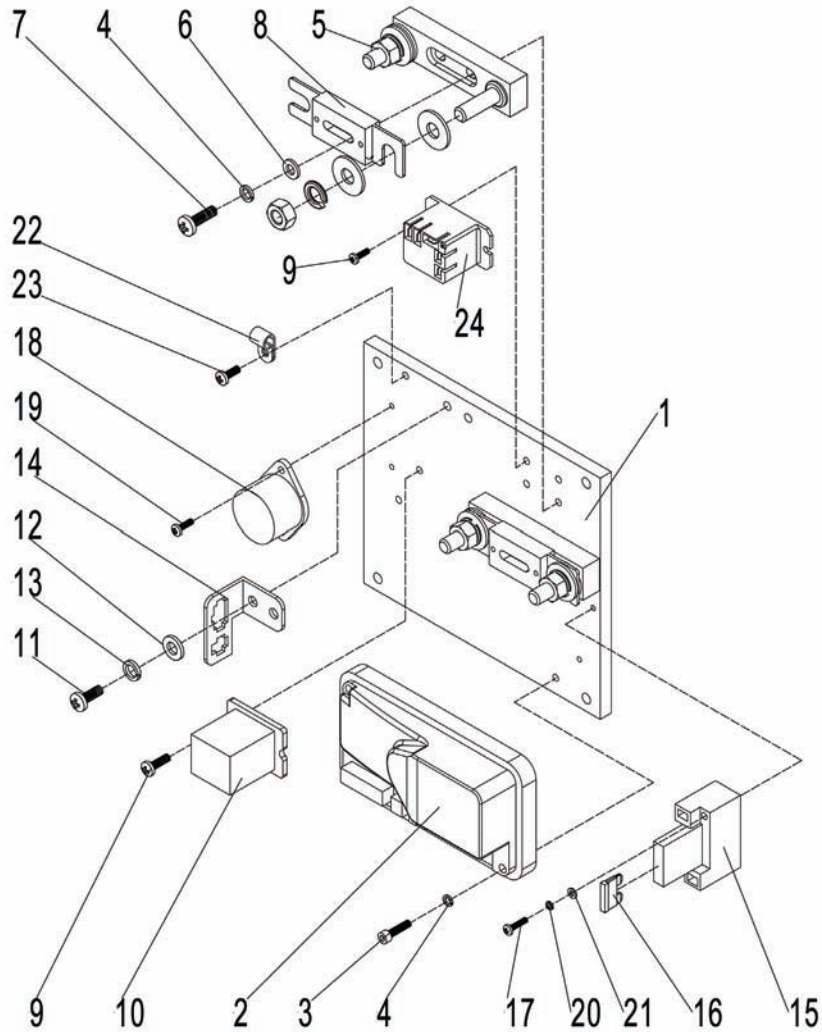


Figure 19 – Repair Parts Illustration for Pallet Truck Controller Kit

Repair Parts List for Pallet Truck Controller Kit

Reference Number	Description	Part Number	Quantity
1	Al plate	+	1
2	Controller,CURTIS 1212P-2501	MH21XU8207G	1
3	Screw, M4x25	++	2
4	Elastic washer, 4	++	8
5	Fuse seat SYY	+	2
6	Flat washer, 4	++	6
7	Screw, M4x16	++	2
8	Fuses, 60A	MH21XU8203G	2
9	Screw, M4x8	++	4
10	Protect module, BD-W-115	MH21XU8218G	1
11	Screw, M5x10	+	2
12	Flat washer, 5	++	2
13	Elastic washer, 5	++	2
14	Fixing plate	+	1
15	Fuse seat	+	1
16	Fuse, 10A	MH5RTA716G	1
17	Screw, M3x30	++	2
18	Buzzer, HYD-4216W 24VDC	MH21XU8210G	1
19	Screw, M3x8	++	2
20	Elastic washer, 3	++	2
21	Flat washer, 3	++	2
22	Cable Clip	+	1
23	Screw, M4x10	++	1
24	Relay, ARP12F-1C 24VDC	MH21XU8222G	1

(†) Refer to control handle kit illustration and parts list on pages 38 and 39.

(††) Not available.

For Repair Parts, call 1-800-323-0620

24 hours a day – 365 days a year

Please provide following information:

- Model number
- Serial number (if any)
- Part description and number as shown in parts list

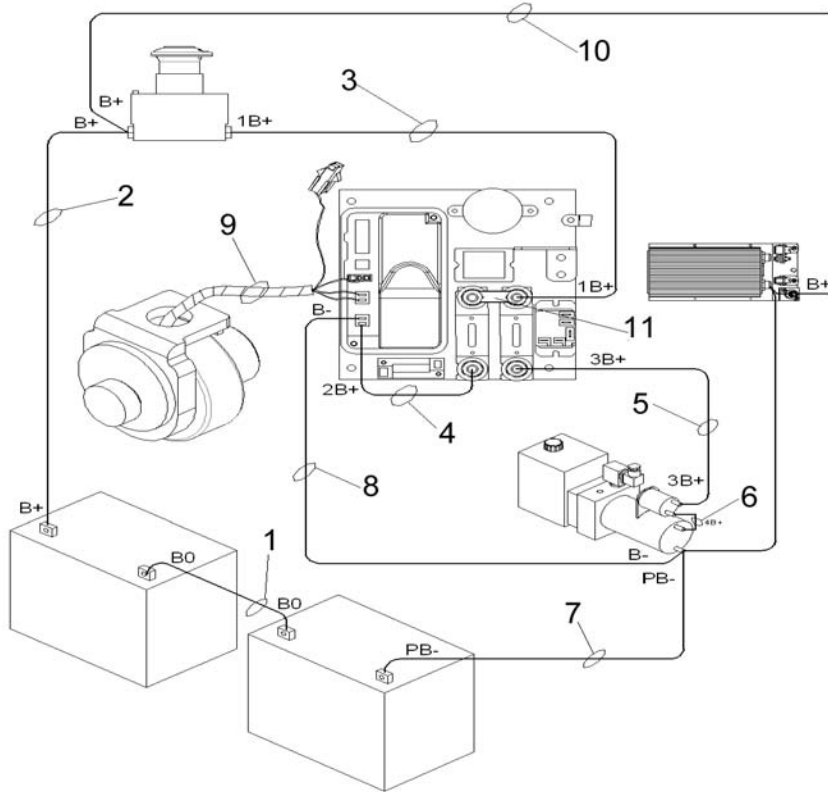


Figure 20 – Repair Parts Illustration for Pallet Truck Cable

Repair Parts List for Pallet Truck Cable

Reference Number	Description	Part Number	Quantity
1	Cable B0	+	1
2	Cable B+	+	1
3	Cable 1B+	+	1
4	Cable 2B+	+	1
5	Cable 3B+	+	1
6	Cable 4B+	+	1
7	Cable PB-	+	1
8	Cable B-	+	1
9	Cable for driving wheel	+	1
10	Charger B+	+	1
11	Copper bar	+	1

(†) Not available.

E
N
G
L
I
S
H

Models 21XU81 and 21XU82

Troubleshooting Chart

Symptom	Possible Cause(s)	Corrective Action
Load can't be lifted	1. Load weight too high	1. Lift only the max. capacity metioned on the ID - plate
	2. Battery discharged	2. Charge the battery
	3. Lifting fuse faulty	3. Check and eventually replace the lifting fuse
	4. Hydraulic oil level too low	4. Check and eventually refill hydraulic oil
	5. Oil leakage	5. Repair the hoses and/or the sealing of the cylinder
	Excessive quantity of oil	Reduce oil quantity
Oil leakage from air breathing	1. Battery is charging	1. Charge the battery completely and then remove the main power plug from the electrical socket.
	2. Battery not connected	2. Connect the battery correctly
	3. Fuse fault	3. Check and eventually replace fuses
	4. Low battery	4. Charge the battery
	5. Combined emergency switch is activated	5. De- activate the combined emergency switch by inserting and pulling the knob.
Truck not starting	6. Tiller in the operating zone	6. Move the tiller first to the braking zone.

E
N
G
L
I
S
H

Dayton® Pallet Trucks

LIMITED WARRANTY

DAYTON ONE-YEAR LIMITED WARRANTY. DAYTON® PALLET TRUCKS, MODELS COVERED IN THIS MANUAL, ARE WARRANTED BY DAYTON ELECTRIC MFG. CO. (DAYTON) TO THE ORIGINAL USER AGAINST DEFECTS IN WORKMANSHIP OR MATERIALS UNDER NORMAL USE FOR ONE YEAR AFTER DATE OF PURCHASE. ANY PART WHICH IS DETERMINED TO BE DEFECTIVE IN MATERIAL OR WORKMANSHIP AND RETURNED TO AN AUTHORIZED SERVICE LOCATION, AS DAYTON DESIGNATES, SHIPPING COSTS PREPAID, WILL BE, AS THE EXCLUSIVE REMEDY, REPAIRED OR REPLACED AT DAYTON'S OPTION. FOR LIMITED WARRANTY CLAIM PROCEDURES, SEE "PROMPT DISPOSITION" BELOW. THIS LIMITED WARRANTY GIVES PURCHASERS SPECIFIC LEGAL RIGHTS WHICH VARY FROM JURISDICTION TO JURISDICTION.

LIMITATION OF LIABILITY. TO THE EXTENT ALLOWABLE UNDER APPLICABLE LAW, DAYTON'S LIABILITY FOR CONSEQUENTIAL AND INCIDENTAL DAMAGES IS EXPRESSLY DISCLAIMED. DAYTON'S LIABILITY IN ALL EVENTS IS LIMITED TO AND SHALL NOT EXCEED THE PURCHASE PRICE PAID.

WARRANTY DISCLAIMER. A DILIGENT EFFORT HAS BEEN MADE TO PROVIDE PRODUCT INFORMATION AND ILLUSTRATE THE PRODUCTS IN THIS LITERATURE ACCURATELY; HOWEVER, SUCH INFORMATION AND ILLUSTRATIONS ARE FOR THE SOLE PURPOSE OF IDENTIFICATION, AND DO NOT EXPRESS OR IMPLY A WARRANTY THAT THE PRODUCTS ARE MERCHANTABILITY, OR FIT FOR A PARTICULAR PURPOSE, OR THAT THE PRODUCTS WILL NECESSARILY CONFORM TO THE ILLUSTRATIONS OR DESCRIPTIONS. EXCEPT AS PROVIDED BELOW, NO WARRANTY OR AFFIRMATION OF FACT, EXPRESSED OR IMPLIED, OTHER THAN AS STATED IN THE "LIMITED WARRANTY" ABOVE IS MADE OR AUTHORIZED BY DAYTON.

Technical Advice and Recommendations, Disclaimer. Notwithstanding any past practice or dealings or trade custom, sales shall not include the furnishing of technical advice or assistance or system design. Dayton assumes no obligations or liability on account of any unauthorized recommendations, opinions or advice as to the choice, installation or use of products.

Product Suitability. Many jurisdictions have codes and regulations governing sales, construction, installation, and/or use of products for certain purposes, which may vary from those in neighboring areas. While attempts are made to assure that Dayton products comply with such codes, Dayton cannot guarantee compliance, and cannot be responsible for how the product is installed or used. Before purchase and use of a product, review the product applications, and all applicable national and local codes and regulations, and be sure that the product, installation, and use will comply with them.

Certain aspects of disclaimers are not applicable to consumer products; e.g., (a) some jurisdictions do not allow the exclusion or limitation of incidental or consequential damages, so the above limitation or exclusion may not apply to you; (b) also, some jurisdictions do not allow a limitation on how long an implied warranty lasts, consequently the above limitation may not apply to you; and (c) by law, during the period of this Limited Warranty, any implied warranties of implied merchantability or fitness for a particular purpose applicable to consumer products purchased by consumers, may not be excluded or otherwise disclaimed.

Prompt Disposition. A good faith effort will be made for prompt correction or other adjustment with respect to any product which proves to be defective within limited warranty. For any product believed to be defective within limited warranty, first write or call dealer from whom the product was purchased. Dealer will give additional directions. If unable to resolve satisfactorily, write to Dayton at address below, giving dealer's name, address, date, and number of dealer's invoice, and describing the nature of the defect. Title and risk of loss pass to buyer on delivery to common carrier. If product was damaged in transit to you, file claim with carrier.

Manufactured for Dayton Electric Mfg. Co., 100 Grainger Parkway, Lake Forest, IL 60045 USA.

