

Please read and save these instructions. Read carefully before attempting to assemble, install, operate or maintain the product described. Protect yourself and others by observing all safety information. Failure to comply with instructions could result in personal injury and/or property damage! Retain instructions for future reference.

Dayton® Pallet Trucks

Description

The Dayton Pallet Trucks 2LEB8A and 2LEB9A are specially designed for conveyance on level roads. Their compact structure makes them applicable for plants, workshops, wharfs, and small warehouses. They can also be used to load/unload cargo on trucks. The load capacity for each truck is marked on the truck data plate.

Unpacking and Inspection

Handle carefully. Check the packing list to account for all items. Visually inspect for shipping damage. If damaged, immediately file a claim with the carrier.

General Safety Information

▲ WARNING Do not use this pallet truck before reading and understanding these operating instructions.

NOTE: Keep this manual for future reference.

Thank you for purchasing this electric pallet truck. For your safety and to

ensure proper operation, carefully read this instruction book and the warnings on the pallet truck before using it.

These Operating Instructions are designed for you to thoroughly understand and master the safe operation of the pallet truck.

Specifications for multiple types of the pallet truck may be described in these Operating Instructions. During operation and maintenance, please apply the relevant aspects for the type of the pallet truck that you have purchased.

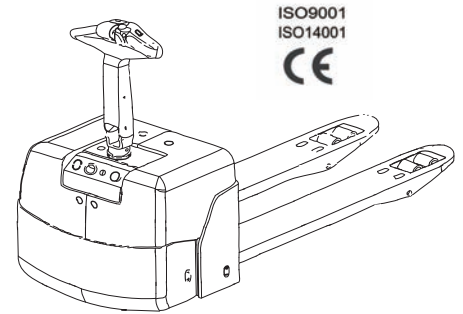


Figure 1

Safety specifications and special notices are marked with the following signs:

▲ WARNING Safety warnings must be observed to avoid serious personal injury or equipment damage.

Specifications

Model	Power Supply	Operation Type	Capacity/ Rated Load (Q)*	Load Center Distance (C)*	Load Distance, Center of Drive Axel to Fork (X)*	Wheelbase (Y)*	Turning Angle
-------	--------------	----------------	---------------------------	---------------------------	--	----------------	---------------

2LEB8A	Electric	Pedestrian	3300 lbs.	24"	41.5"	51.5"	205°
2LEB9A	Electric	Pedestrian/ stand-on	4500	24	40.5	56.5	180

(*) See Figures 2 and 3 on page 4.

Model	Weight (incl. battery)	Axle loadings, laden (drive end/load end)	Axle loadings, unladen (drive end/load end)	Travel Speed (laden/unladen)	Lifting Speed (laden/unladen)	Lowering Speed (laden/unladen)
-------	------------------------	---	---	------------------------------	-------------------------------	--------------------------------

2LEB8A	635 lbs.	1485/2450 lbs.	500/135 lbs.	3.1/3.23 mph	1.06/1.38 in./s	1.65/1.06 in./s
2LEB9A	1150	2290/3260	895/255	3.1/3.23	1.06/1.38	1.65/1.06

Model	Gradability (laden/unladen)	Brakes	Drive Motor	Lifting Motor	Battery Voltage Norm. cap. K5	Battery Weight ±10%	Battery Dimensions	Drive Control	Sound Level (at driver's ears)
-------	-----------------------------	--------	-------------	---------------	-------------------------------	---------------------	--------------------	---------------	--------------------------------

2LEB8A	5/8%	Electric mag.	1.34 hp	1.0 hp	2 x 12/80 V/Ah	110 lbs.	10.2 x 6.7 x 9"	MOSFET	<70 dB(A)
2LEB9A	10/16%	Electric mag.	2.0	1.0	24/210 V/Ah	410	26.6 x 7.7 x 22.5	MOSFET	<70 dB(A)

Dayton® Pallet Trucks

General Safety Information (Continued)

▲ CAUTION *Cautions must be observed to avoid personal injury or equipment damage.*

NOTE: or IMPORTANT: – General notices and specifications should be observed before use.

IMPORTANT: The information reported within this manual is based on data available at the time of printing. Products are constantly being developed and improved, therefore, we reserve the right to modify our products at any time without prior notice. As a result, it is always recommended to verify possible updates and changes.

NOTE: The majority of this pallet truck consists of steel, which can be completely recycled. Waste material from repairs, maintenance, cleaning or scrapping, must be collected and disposed of in environmentally friendly ways and in accordance with local laws and ordinances. Recyclable material should be taken care of by qualified authorities. Environmentally hazardous waste, such as oil, oil filters, batteries, and electronics, will have a negative effect on the environment, or health, if disposed of improperly.

OPERATOR REQUIREMENTS

- Pallet truck must be operated by an authorized and trained person who can demonstrate its proper operation.

OBLIGATIONS AND RESPONSIBILITIES OF THE OPERATOR

- Operator must fully understand his obligations and have received training on the truck's proper operation prior to use.

- Operator must master the information contained in these Operating Instructions.
- Operator should wear appropriate safety equipment during use, including safety boots.

FORBIDDEN USE BY UNAUTHORIZED PERSONS

- Operator must be responsible for the truck and must prevent unauthorized persons from driving or operating the truck.
- Lifting or carrying persons is strictly prohibited.

FAILURE AND FAULT

In the event of equipment failure or fault, notify maintenance personnel immediately. In cases where the truck's safety is compromised (e.g. worn-out wheel or brake fault), immediately discontinue using the truck until it is properly repaired.

REPAIR

Only professionally trained and specifically authorized individuals are permitted to repair or modify any part of the truck. Any changes to installed switches and safety devices by the operator are strictly prohibited.

IMPORTANT: All spare parts from the manufacturer are inspected by Quality Assurance Authorities. To ensure the safety and reliability of the truck's operation, only manufacturer approved spare parts may be used. Replaced parts, including oils and fuels, must be disposed of in accordance with environmental protection regulations.

DANGER AREA

The "danger area" refers to the area where the truck is working or lifting, causing a potentially dangerous situation for persons or property in that the area.

▲ WARNING *Unauthorized persons must keep away from the danger area. In situations with potential danger to others, the operator must give a warning notice. If the danger area isn't vacated as requested, the operator must stop using the truck immediately.*

WORKING IN HAZARDOUS ENVIRONMENTS

A pallet truck operating in an area where there is a hazard risk, or in any other high-risk area, should be specially equipped for use in that environment.

▲ CAUTION *This pallet truck is not equipped for hazardous situations.*

SAFETY DEVICES AND WARNING SIGNS

Special attention should be given to safety devices, warning signs, and warning notices within these Operating Instructions and on the pallet truck itself.

DRIVING IN PUBLIC AREAS

The truck should not be driven on public roads.

DISTANCE BETWEEN VEHICLES

Bear in mind that the material handling vehicle in front of you may brake suddenly; therefore, keep a reasonable distance when operating this truck.

Model 2LEB8A and 2LEB9A

General Safety Information (Continued)

PASSENGERS

Passengers should not ride on the truck unless it is indicated as permissible on the truck.

USE IN ELEVATORS AND ON LOADING PLATFORMS

This truck may only be driven into an elevator or loading platform if it has been authorized. The operator must confirm that the elevator or loading platform has adequate load capacity to support the weight of the operator, truck, load and other contents of the elevator or loading platform before entering the elevator or loading platform. Cargo should be placed properly inside the elevator to avoid touching the elevator walls. Passengers must enter the elevator only after proper parking of the truck, and should depart from the elevator before moving the truck.

DRIVING LANES AND WORK AREAS

Only lanes and routes that are specially allocated for truck traffic may be used. Unauthorized persons should stay away from work areas. Loads must only be stored in places specially provided for this purpose.

OPERATOR CONDUCT

Driving speeds must be applicable for conditions. Low speed is mandatory when turning, navigating narrow aisles, passing through doors, or driving with a blocked field of vision. The operator must be able to measure the braking distance to the front of the truck by sight and control his truck at all times.

Sudden braking (except in emergency), quick U-turns, and passing other trucks in dangerous or blind spots is prohibited. Operator should stay within the operator's area during operation.

VISIBILITY

The operator must have clear visibility in the driving direction the truck is traveling. If cargo obstructs your line of sight, operating in reverse is recommended. If operating in reverse isn't suitable, another person must walk ahead of the truck to give guidance and warning.

NEGOTIATING SLOPES AND INCLINES

Operating on slopes is permitted only when they are recognized lanes, when they are clean and non-slip surfaces, and when the technical data of the truck permits safe driving on such slopes or inclines. Cargo must face in an upward direction of slope. U-turns, cutting obliquely over slopes or inclines, and parking on slopes or inclines is prohibited. When operating on a slope, the truck should be driven at slow speed and the operator must be prepared to brake and stop.

FLOOR LOAD

Carefully check maximum floor load capacities and ensure they are not exceeded.

TRANSPORTS

The truck should always be driven with the forks to the lowest position except when placing or moving a load. The truck should be driven in the opposite direction of the forks when possible. This will allow better visibility and maneuverability. Driving with the forks

pointing forward may cause the truck to turn unexpectedly.

LOAD CHARACTERISTICS

Only loads that have been safely and correctly secured may be carried. Never transport loads stacked higher than the top of the truck.

TRUCK ON A GANGWAY OR ANOTHER VEHICLE

Before the truck is driven from a loading dock onto a platform or vehicle, always check the maximum load capacity of the gangway. Ensure that there are devices to prevent the gangway from sliding, and the driver should remember to check the maximum load capacity of the vehicle that you intend to drive onto. There should be devices (e.g. wheel chocks) that prevent the vehicle from moving.

PARKING

The truck should not be left unattended other than in specified parking areas. The truck should always be parked on a level surface. If the truck is equipped with a parking brake, it should be engaged. The forks should be lowered to their lowest position. Always turn the key switch to the "OFF" position. Unauthorized personnel should not use the truck. Always remove the key when leaving the truck.

NOTE: If the truck will be left unused for a prolonged period without being recharged (e.g. between two shifts), the battery plug should be disconnected.

SIGNALING

Use the signal horn to attract attention as necessary.

Dayton® Pallet Trucks

General Safety Information (Continued)

PROTECTIVE SHOES

Protective shoes should be worn when working with truck according to EU standards EN-345:1-S1.

ADDITIONAL FEATURES / TRAILERS

An authorized representative should be contacted if, after delivery, the truck needs to be equipped with additional features, tow hitch equipment for trailers, or other accessories which could influence the stability or braking capacity of the truck.

Additional Specifications and Dimensions

SPECIFICATIONS

TECHNICAL DATA-STANDARD VERSION

Descriptions of technical data are according to VDI 2198 and are only provided for standard trucks. Non-standard types, additional equipment, etc. could produce other values. The manufacturer reserves the right to make technical modifications and additions.

EN STANDARDS

Sustained noise levels must be < 70dB (A); Refer to ISO4871 Standard

NOTE: Continuous sound levels are averaged values according to standard regulations, taking into account the noise level when driving, lifting and idling. The noise level is measured at the ear.

ELECTROMAGNETIC COMPATIBILITY (EMC)

The manufacturer tests electromagnetic emissions, immunological interference, and electrostatic elimination in compliance with EN12895 and other standards.

CAUTION No modifications to the electrical system may be made without written approval from the manufacturer.

APPLICATION CONDITIONS

Ambient temperature operation range: 40°F (5°C) to 105°F (40°C)

DIMENSIONS

(See Tables 1 and 2 on page 5 for Wheel and Truck Dimensions.)

CAUTION During continuous operation of the truck in conditions below 40°F (5°C), or in low temperature and high humidity, special protections should be taken to protect electronic gauges and circuitry.

IMPORTANT: Read and understand all product data plates before use. In case of problems or to purchase spare parts, refer to the series number and part codes on data plates.

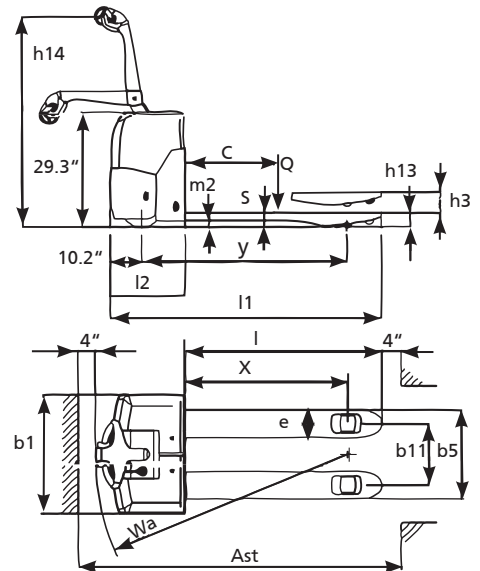
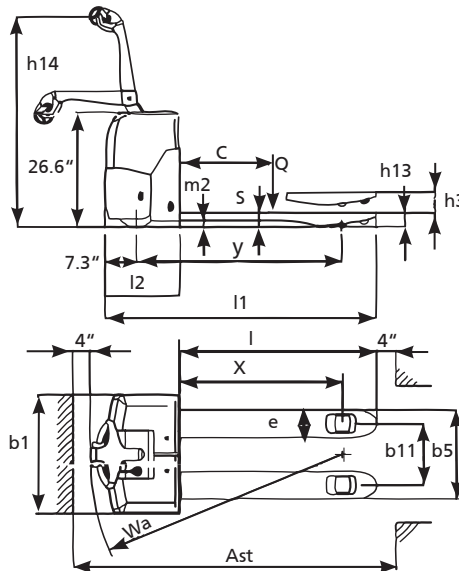


Figure 2 – Dimensions for Model 2LEB8A Figure 3 – Dimensions for Model 2LEB9A

Models 2LEB8A and 2LEB9A

Additional Specifications and Dimensions (Continued)

Description	Fig. 2 and 3 Reference	2LEB8A	2LEB9A
Tire material		polyurethane	
Tire size (D x W) drive end		10 x 3.5"	9 x 3"
Tire size (D x W) load end		2.9 x 2.75"	
Caster wheels		4 x 1.5"	
Number of wheels		1 drive wheel, 2 casters, and 4 load wheels	
Track width (front) drive end	b10	19.3"	21.25"
Track width (rear) load end	b11	19.3"	20.7"

Table 1 – Wheel Dimensions

Description	Fig. 2 and 3 Reference	2LEB8A	2LEB9A
Lift height	h3	4.7"	
Tiller height (in neutral position)	h14	48.6"	52"
Fork height lowered	h13	3"	
Overall length	l1	65.3"	74.2"
Length to front face of fork	l2	17.3"	26.2"
Overall width	b1	27.5"	28.5"
Fork dimensions	s/e/l	1.85 x 6.3 x 48"	2.36 x 6.3 x 48"
Overall fork width	b5	25.6"	27"
Ground clearance, center of wheelbase	m2	1.0"	
Aisle width for 800 x 1200 pallet, lengthwise	Ast	77.8"	84.5"
Turning radius	Wa	61"	67.3"

Table 2 – Pallet Truck Specific Dimensions

Transportation and Commissioning

PALLET TRUCK CONVEYANCE

⚠ WARNING *The load capacity of any hoisting equipment used to lift the truck should be adequate. (Carried weight = net weight of truck + weight of battery; refer to data plate.)*

NOTE: Hoisting position is indicated on the chassis by the manufacturer.

Prior to conveyance:

- Place the truck at a safe position.
- Attach to a point of strength on the crane using the hoisting position on the truck.

⚠ WARNING *The point of strength of the crane must be attached to hoisting position to avoid slippage of the truck. During hoisting, the hoisting equipment must be attached to the hoisting position without touching the truck.*

COMMISSIONING

⚠ WARNING *Only battery power may be used to operate the truck. AC power will damage the electric circuitry. Battery connecting cables should be less than 20 feet (6 meters) in length.*

For normal operation after delivery or transportation, the following procedures should be followed:

- Verify that the assembly of all truck parts is complete and will satisfy the job requirements.

- If necessary, install the battery, taking care to avoid damage to the battery cable.
- Charge the battery immediately.
- If the consumer expects to apply a maintenance-free battery as a substitute, verify that the type of battery is compatible with the electronics of the truck and charger. Get approval from the manufacturer if there is any doubt regarding compatibility.

Dayton® Pallet Trucks

Maintaining, Charging and Replacing the Battery

SAFE OPERATION RULES FOR LEAD-ACID BATTERY

Before doing any maintenance on the battery, securely park the stacker in a safe location.

MAINTENANCE STAFF

Charging, repairing, and replacing batteries should only be performed by qualified professionals. Before operating, carefully read the instructions included in this manual regarding battery preparation and charge requirements.

▲ WARNING *The electrolyte in the battery is poisonous and corrosive. Battery maintenance should always be performed while wearing protective goggles and clothing to avoid bodily contact with the battery acid solution.*

▲ WARNING *If clothing, skin or eyes accidentally come into contact with the electrolyte in battery, liberally flush the affected parts with clean water and consult a doctor immediately. Any spilled electrolyte must be neutralized as soon as possible.*

FIRE PROTECTION

Smoking and any other sources of ignition are strictly prohibited near the battery. The battery should be stored and charged at least 6 feet (2 meters) away from any flammable substance. Batteries should be stored in a well ventilated location with fire protection equipment.

MAINTENANCE OF BATTERY

1. Keep all screw caps on the battery cells dry and clean. Battery posts and cable terminals should be tightened and covered with clean dielectric grease. Terminal connections and battery posts should be covered with anti-slip insulated covers.
2. Cables connecting the cells should have good contact. Check nuts for loosening or slippage and tighten if necessary.
3. Keep the surface of the battery clean and dry. After each charge, wipe any acid stains with a cotton cloth, and rinse the surface clean.
4. Over-charging or rapid discharging of the battery should be avoided. Forcibly charging or discharging the battery will shorten its life.
5. To prevent a short circuit or explosion, conductive objects (including metal tools) should not be placed on the battery.
6. Harmful impurities (solid or liquid) cannot be allowed to enter the battery cells. When using a hydrometer to check electrolyte, its surface should be clean.
7. After battery is discharged, it should be recharged in a timely fashion. Maximum charging intervals should not exceed 24 hours. On cold days, if the battery doesn't take a charge, move it indoors and allow it to warm to room temperature.
8. If the battery will not be used for a long period of time, it should be fully charged prior to storage, and a full charge should be reapplied monthly.
9. If fluid levels decrease, distilled water (not electrolyte) should be added. Levels should be even across cells.
10. If a cell malfunctions, the cause should be determined and the malfunctioning cell should immediately be repaired or replaced.
11. When charging batteries, ventilation equipment should be used to exhaust any potentially harmful or flammable gases. There is a risk of hydrogen explosion in poorly ventilated conditions.
12. The weight and dimension of the battery have a significant effect on the stability of the truck. Any change of battery type should be approved by manufacturer.
13. Heavy current discharges (e.g. the driving motor and lifting motor operate simultaneously) are not allowed.

NOTE: A sealed Various Rechargeable Lead Acid battery (VRLA) is supplied with 2LEB8A pallet truck, which requires less maintenance.

BATTERY DISPOSAL

Scrap batteries must be disposed of in an environmentally-friendly way and in accordance with the regulatory authorities.

Models 2LEB8A and 2LEB9A

Maintaining, Charging and Replacing the Battery (Continued)

BATTERY REMOVAL AND INSTALLATION

▲ WARNING Park the truck on level ground. Cover electrodes with a rubber gasket to avoid a short circuit. When removing the battery, adjust the battery cables to keep them from impeding the battery's removal.

▲ WARNING When lifting the battery with a hoist, confirm that the hoist has adequate capacity (battery weight is shown on the pallet truck data plate). The hoist must pull the battery vertically to avoid damaging the battery case. The hoist hook must be safe and reliable. The hoist hook must not contact the battery posts.

- Engage the emergency stop and turn electric lock switch to "OFF" position.
- Disconnect the battery.
- Remove the battery using a hoist or crane.

NOTE: Installation procedure is the reverse of the above sequence.

▲ WARNING After installing, check for damage on all cables and plugs. Battery posts must be covered by an insulating cap for protection. When connecting the battery, the truck must be turned completely off to avoid arcing.

▲ CAUTION Use caution when covering the battery case. Avoid putting fingers between the cover and case. Before using the truck, ensure the battery and cover are properly secured.

BATTERY CHARGING

▲ WARNING Battery charging must comply with any instruction manuals provided by the battery and charger suppliers. These pallet trucks are equipped with a charger that is specific to the battery supplied.

▲ WARNING Before connecting the charger to battery, make sure the charger, emergency switch, and electric lock switch are in the off position. Charge the battery in a dry and air-circulated environment and keep away from fire sources. The battery should be charged regularly (once per month at a minimum).

When the charge is low, an alarm will flash on the battery meter. When this happens, discontinue use and charge the battery immediately.

AUTOMATIC CHARGER

A fully automatic smart charger is included with the pallet truck. The charger indicator lights in red when the battery is charging. The charger will automatically adjust the current flow according to residual capacity of the battery, which ensures an optimum charge. When complete, the charger indicator lights green and the charger automatically stops. A full charging course generally lasts 5-7 hours.

IMPORTANT: Before charging, make sure no metal objects are on the battery. Check for any obvious faults on all cables and plugs. Safety instructions, including common rules and battery charging preparation procedures, should be strictly observed. During charging, cock caps for each cell should be opened to maintain air circulation conditions.

INITIAL CHARGING

1. If the new battery arrives without fluid, electrolyte should be added rather than distilled water. The specific gravity of the electrolyte should be 1.280 ± 0.005 at normal temperature of 77°F (25°C). Pour the configured electrolyte into the battery with a fluid level approximately 1/16" (15-20mm) higher than the protective slice.

▲ WARNING Wait until the cell temperature has dropped to below 95°F (35°C) before conducting the initial charge.

2. The initial charge should be conducted in two stages:
- a. When the cell voltage is less than 2.4V, the current should be 0.5A.
 - b. When the cell voltage rises above 2.4V, the current should be reduced to 0.25A. Continue to charge until air bubbles come out from the electrolyte. Keep the cell voltage under constant, steady current for 3 hours. When the electrolyte density reaches $1.280+0.005$ and will hold at that level for 3 hours off the charger, initial charging is complete.

A battery's initial charge should be 4-5 times its rated capacity (e.g. a 100 Ah battery requires a 400-500 Ah initial charge.) Initial charging time is approximately 70 hours.

NOTE: Most batteries come pre-filled with electrolyte, in which case initial charging is not required.

Dayton® Pallet Trucks

Maintaining, Charging and Replacing the Battery (Continued)

BALANCE CHARGING

Through normal use, non-uniformity in voltage capacity, electrolyte, and concentration may occur. By balance charging, such non-uniformity can be eliminated and cells can be restored to their original uniform conditions.

Balance charging should be used in the following conditions:

1. Cell voltages are at or below 1.7V per cell.
2. Cells have experienced heavy discharging current (e.g. the driving and lifting motors have been operating simultaneously).
3. Battery has not been recharged in a timely manner after being discharged.
4. Battery has been under-charged or battery has not been used for a long time.

STEPS FOR BALANCE CHARGE:

1. Charge with a current of 0.1 A.
2. Once the voltage reaches 2.5V and the air bubbles come out from the electrolyte, continue charging with the current of 0.05 A.
3. When the battery is fully charged, discontinue charging for half an hour. Reapply a charge for 1 hour at a current of 0.025 A.
4. Discontinue charging for half an hour, then reapply a charge for 1 hour at a current of 0.025 A again.

5. If air bubbles come out from the electrolyte as soon as the charger is connected to the power supply, balance charge is complete. Otherwise repeat step 4 again.

NOTE: Balance charging is essential monthly maintenance for a battery in normal use.

BATTERY METER

The level of battery charge is indicated on the battery meter with ten indicator bars, each indicating 10%. As the charge is consumed, bars will descend downwards from the top. An "Insufficient Capacity" reading will appear when the battery is at 30% capacity, at which time the battery should be recharged. If the battery reaches 20%, the meter will flash and the lifting function of truck will be automatically cut off and locked until the battery is recharged.

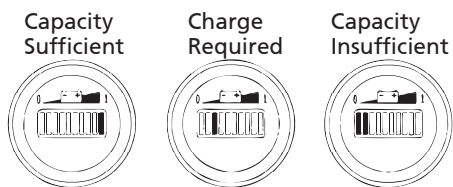


Figure 4 – Battery Meter Indicator Bars

NOTE: If the battery meter indicates insufficient capacity immediately upon lifting, the battery should be charged to at least 70% of capacity before resuming lifting.

Operation

CONTROL HANDLE FEATURES

1. Raise/Lower button – Rocker switch adjusts fork height.
2. FWD/REV travel button – Variable speed control switch.
3. Reversing button – Emergency directional reverse button.
4. Horn button
5. Indicator light – Indicates high/low speed status. Green indicates normal speed, red indicates snail speed.
6. Shift button – Alternates between normal speed and snail speed.

STARTING THE TRUCK

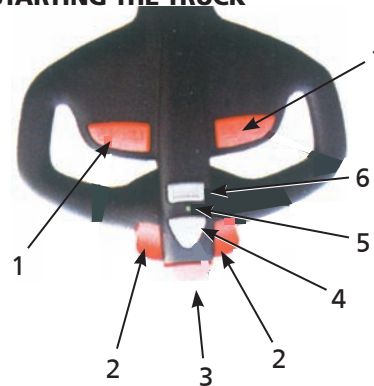


Figure 5 – Control Handle Features

⚠ WARNING *Confirm that no persons are in the danger area before starting and operating the truck or lifting any cargo.*

ROUTINE CHECKS BEFORE START UP

- Check for any external truck defects (especially wheels and pallets).
- Check that the battery is firmly fixed and cables are connected properly.

Models 2LEB8A and 2LEB9A

Operation (Continued)

TRUCK START UP

- Engage the emergency brake.
- Insert key into electric lock switch and turn right to the "ON" position.
- Turn on the emergency switch.
- Check the battery meter for adequate capacity.
- Check the function of horn.
- Check the braking functions of the control handle.

TRUCK OPERATION

STARTING UP, DRIVING AND PARKING

CAUTION *Caution must be used when starting up and driving the truck. Riding of any kind is prohibited unless expressly permitted by notations on the truck.*

EMERGENCY STOPPING

To stop suddenly, press the emergency brake switch. All electric control functions will be cut off.

SUDDEN BRAKING

If you need to brake suddenly, release the control handle. The control handle will rise into braking range (B1) and the truck will automatically brake (emergency stop).

WARNING *If the control handle rises slowly when released, locate the fault and repair it. If necessary, please replace the gas piston within the handle.*

STARTUP

IMPORTANT: The battery case must be checked and covered before starting up the truck.

STARTING THE TRUCK

Driving speed is controlled by the controller.

- Move the control handle into driving range "F".
- Adjust the controller to the direction required and the truck will move in the selected direction.

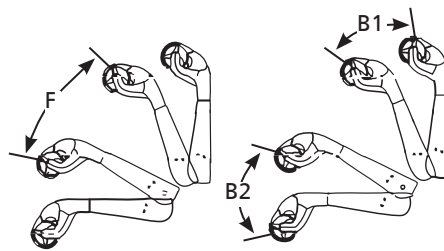


Figure 6 – Control Handle Driving and Braking Range of Motion

STEERING

Swing the control handle to the left or right to steer.

DRIVING ON A SLOPE

WARNING *Operator should stand uphill of the load when traveling on a slope. Non-uniformly loaded cargo must be loaded in an upward direction of the slope. Make sure the area downhill from the truck is clear should any slippage occur. When traveling downhill, pull the handle downward from the full upright position and then release it as needed to utilize the electromagnetic brake and control the speed and the direction of the truck.*



Figure 7 – Movement on a Slope

BRAKING

WARNING *The operator must understand that braking performance is subject to surface conditions.*

There are three methods of braking on this truck:

- Electromagnetic braking (control handle)
- Reverse current braking (controller)
- Sensor braking (release braking)

ELECTROMAGNETIC BRAKING

IMPORTANT: In emergency situations, the truck should be stopped by electromagnetic braking (control handle) only.

- Move the control handle upwards or downwards into braking range (B1) and (B2) and the driving motor will stop mechanically.

NOTE: When the control handle is released, it will move to braking range (B1) automatically.

After parking the truck, the electromagnetic brake serves as the parking brake.

REVERSING CURRENT BRAKING

NOTE: In case of control system or driving power malfunction, it is possible to use reverse braking.

- Rotate the controller in the direction opposite of driving until the truck has stopped.
- Release the controller.

INERTIA BRAKING

After releasing the controller, it will return to the neutral position and the truck will stop by motor inertia. Note that the rate of braking is subject to the position of controller.

Dayton® Pallet Trucks

Operation (Continued)

▲ WARNING *If inertia braking is removed by maintenance staff and the controller is set at neutral position, the truck can be stopped only by electromagnetic braking and reverse current braking.*

CARGO LOADING/UNLOADING

▲ WARNING *Before loading cargo, the operator must confirm that cargo is properly placed on the pallet and the weight of the cargo is within the rated load capacity of the truck. Carrying full capacity loads for extended periods is prohibited.*

- The forks should extend the full length of the bottom of the cargo.
- The "Up" and "Down" buttons will lift and lower the load at a fixed speed.

LIFTING OF FORKS

- Press the "Raise" control button until desired height is achieved.

LOWERING OF FORKS

- Press the "Lower" control button to lower the forks to the required height.

PARKING

IMPORTANT: Parking the truck on a slope is strictly prohibited. Forks must be lowered to their lowest height when parking.

- Lower the forks.
- Turn electric lock switch to the "OFF" position and take out the key.

Maintenance

SAFETY OPERATION AND ENVIRONMENTAL PROTECTION

The instructions in this section should be performed based on the time intervals specified in the Maintenance List.

▲ WARNING *No part of the truck, especially safety devices, may be changed without the manufacturer's permission. Altering the travel speed of the truck is strictly prohibited. All spare parts from the manufacturer are qualified by Quality Assurance Authorities. To ensure safe and reliable truck operation, only spare parts from the manufacturer should be used. Replaced parts, including oils and fuels, must be disposed according to environmental protection regulations.*

MAINTENANCE SAFETY RULES

MAINTENANCE STAFF

Repair and maintenance should only be performed by qualified professionals who have been trained by the manufacturer.

LIFTING THE TRUCK

Hoisting equipment used to lift the truck should be safe and reliable. When the truck is lifted, necessary precautions should be taken to avoid slipping or overturning of the truck (a wedge block or wood block can be applied). The truck should be lifted only when the forks are fixed and adequately strong connecting cables are applied.

CLEANING

Using flammable fluids to clean the truck is strictly prohibited. Before cleaning, safety measures must be taken to avoid sparking (e.g. caused by short circuit). Battery work should only be performed after cutting off the power. Electric elements and electronic

assemblies should only be cleaned using compressed air or a nonconductive, anti-static brush.

▲ WARNING *If the truck is cleaned with a high pressure washer, all electric elements and electronic assemblies should be covered to avoid a functional fault. Cleaning with a steam nozzle is prohibited.*

ELECTRICAL SYSTEM

Work on the truck's electrical system should only be performed by trained professionals. Protective measures should be taken to avoid electric shock. Before beginning work, separate the battery socket to cut off power to the truck.

WELDING

To avoid damage of electric and electronic assemblies, assemblies should be removed from the truck before welding.

INSTALLATION

After repairing or replacing hydraulic components, electric elements, and electronic assemblies, confirm that all components are at original positions before resuming use.

WHEELS

Wheel quality greatly affects the stability and driving performance of the truck. Any change of wheels should be approved by the manufacturer. During replacement of wheels, the truck must be kept in a horizontal position. Wheels must be replaced in pairs, (e.g. both left and right).

HYDRAULIC OIL LINE

The oil line should be replaced every six years. Hydraulic oil should be replaced at the same time.

Models 2LEB8A and 2LEB9A

Maintenance (Continued)

DAILY MAINTENANCE (BEFORE EACH SHIFT)

1. Check the battery's acid levels daily.
Note that the acid level will rise during recharging.
2. Check battery terminals and cables for proper fit.
3. Make sure the battery box is securely fastened in its holder.
4. Check for any oil leakage.
5. Check the horn.
6. Check the functionality of the transport and parking brakes.
7. Check the frame and wheels for any signs of damage.

MAINTENANCE AND INSPECTION

Complete and professional maintenance is an important part of safe pallet truck operation. Neglecting maintenance will cause premature failure of the truck and potential danger to persons and equipment.

NOTE: Maintenance cycles stated in the Instruction Manual refer to single shift operation under normal conditions. Under dusty conditions, extreme temperature variations, or when operating multiple shifts, maintenance cycles should be shortened.

Maintenance should be performed according to the following intervals under normal conditions:

W1 = every 50 working hours or at least once per week.

M3 = every 500 working hours or at least once every three months.

M6 = every 1000 working hours or at least once every six months.

M12 = every 2000 working hours or at least once per year.

For newly commissioned trucks, the following additional maintenance should be done:

After 50 hours to 100 hours of operation or after 2 months of use:

- Check for any loose nuts on the wheels and tighten as necessary.
- Check for any leakage of hydraulic parts and tighten fittings as required.
- Replace the hydraulic filter.

MAINTENANCE SCHEDULE

Refer to Table 3 on pages 12 and 13 for weekly, monthly and yearly schedules.

Dayton® Pallet Trucks

Maintenance (Continued)

Maintenance Area	Action	1 Week	3 Months	6 Months	1 Year
Chassis and Truck Frame	Inspect for any damage of loading bearing parts		•		
	Inspect all joints of bolts		•		
Drive Wheel	Inspect for noise and leakage in drive system		•		
	Check drive system oil levels		•		
	Replace lubricants			#	•
Load Wheels	Inspect for wear and damage		•		
	Inspect bearings inside wheels and ensure a proper fit †		•		
Steering System	Inspect steering operation motion		•		
Braking System	Inspect brake performance and adjust as needed	#	•		
	Inspect reset function of gas piston; check for leakage or damage		•		
	Check for brake wheel wear		•		
	Inspect brake connection and adjust if necessary		•		
Lifting Equipment	Check performance, look for wear		•		
	Visually inspect for any blockages in the loading wheels		•		
	Check for any wear or damage to the edges of forks and pallet	#	•		
Hydraulic System	Check performance	#	•		
	Check for any leakage or damage on all joints ‡	#	•		
	Check for leakage or damage to hydraulic cylinder, verify safety and reliability of connections	#	•		
	Check oil capacity	#	•		
	Replace hydraulic oil and filter ‡‡			#	•
	Inspect adjustment function of pressure regulator			#	•

Table 3 – Maintenance Schedule

(•) Standard

(#) Refrigerated warehouse

(†) After initial 100 hours of operation, check for any loose nuts on wheels and tighten as necessary

(‡) After initial 100 hours of operation, check for any leakage of hydraulic parts and tighten as required

(‡‡) 500 hours after initial operation

Models 2LEB8A and 2LEB9A

Maintenance (Continued)

Maintenance Area	Action	1 Week	3 Months	6 Months	1 Year
Electrical System	Check performance		•		
	Check for safety and reliability of cable connections, check for damage		•		
	Inspect fuses for proper amperage ratings		•		
	Check safety, reliability, and function of switches		•		
	Inspect connections, replace worn parts if necessary		•		
	Inspect function of alarm equipment	#	•		
Motor	Check for carbon brush wear		•		
	Check that motor is securely attached		•		
	Clean motor housing with vacuum, inspect for commutator wear (DC motor only)		#	•	
Battery	Check the density and capacity of acid, check the battery voltage	#	•		
	Inspect for safety hoods and dielectric grease on connection terminals	#	•		
	Clean battery connections, inspect for tightness of fit	#	•		
	Check for damage to battery cables, replace if necessary		•		
Lubrication	Check grease fittings for proper lubrication, add grease as needed	#	•		
Integrated Measurement	Check for faults in grounding of the electrical system				•
	Check driving speed and braking distance				•
	Check lifting and lowering speed				•
	Inspect safety devices		•		
Demonstration	Commissioning under load rating		•		
	After above maintenance, the truck is certified to be reliable for the operator	#	•		

Table 3 – Maintenance Schedule (Continued)

Dayton® Pallet Trucks

Maintenance (Continued)

MAINTENANCE AND REPAIR PREPARATIONS

Take necessary safety precautions to avoid accidents during repair and maintenance by:

- Parking the truck safely
- Pressing the emergency parking switch to cut power.

▲ WARNING *If it becomes necessary to lift the truck for maintenance or repair, refer to the related instructions in the "Transportation and Commissioning" section for precautions to be taken when lifting the forks or lifting the truck.*

INSPECTION OF HYDRAULIC OIL LEVEL

- Prepare the truck to be repaired or maintained.
- Lower the forks and carriage to their lowest height.
- Remove the four screws (2) and (4) securing the cover. See Figure 8.
- Open the left and right half cover (1) and (3).

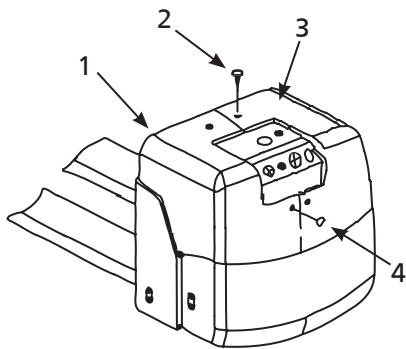


Figure 8 – Cover and Screw Locations

- Check the capacity of the hydraulic oil in the oil tank.
- Reassemble by reversing the above steps.

INSPECTION OF ELECTRICAL FUSES

- Prepare the truck to be repaired or maintained.
- Remove the four screws (2) and (4) securing the cover. See Figure 8.
- Open the left and right half cover (1) and (3).
- Consult the chart below to verify the correct rating for all fuses. Replace if necessary.

Code	Fuse Type	Rating 2LEB8A	Rating 2LEB9A
FU01	Traction control	80A	130A
FU02	Lifting control	60A	80A
FU1	Secondary circuit	10A	10A
FU2	Charging fan	1A	N/A

Table 4 – Fuse Types and Ratings

USING THE TRUCK AFTER MAINTENANCE

Complete the following operations before using the truck:

- Clean the truck.
- Check the braking function.
- Check the function of the emergency parking switch.
- Check the function of the horn.

STORAGE OF THE PALLET TRUCK

If the truck will be unused for 2 or more months, it should be parked in a cool (non-freezing) and dry location. The following measures should be taken before, during, and after storage.

NOTE: During storage, the pallet truck should be elevated to keep the wheels completely off the ground. This will protect the wheels and the bearings inside wheels from damage. In the case of storage period of over 6 months, contact the manufacturer for additional measures.

PREPARATIONS BEFORE STORAGE

- Clean the pallet truck thoroughly.
- Check the braking function.
- Check the hydraulic oil capacity, add fluid if necessary.
- Apply oil or grease to fittings as needed.
- Consult detailed Lubrication List to lubricate the truck.
- Recharge the battery.
- Disconnect and clean the battery. Apply dielectric grease to the battery electrodes.

NOTE: In addition to the above, instructions provided by the battery supplier should also be observed.

Models 2LEB8A and 2LEB9A

Maintenance (Continued)

MEASURES TO BE TAKEN DURING STORAGE

Every two months: charge the battery.

IMPORTANT: It is important to recharge the battery regularly. Batteries allowed to completely discharge may become damaged and require replacement.

RE-COMMISSIONING

- Clean the pallet truck thoroughly.
- Consult detailed Lubrication List to

lubricate the truck.

- Clean the battery, apply dielectric grease to electrode bolts and connect the battery.
- Recharge the battery.
- Check for any moisture in the gear oil, replace if required.
- Check for any moisture in the hydraulic oil, replace if required.
- Start the pallet truck. Check all safety functions before using.

BATTERY OPERATION

In the case of a fault in the electrical system, brush all exposed electrical connections with contact cleaner. Repeat this step to remove oxidation on controller connections.

⚠ WARNING *Electromagnetic braking should be tested immediately after re-commissioning.*

Electrical and Hydraulic Flow Diagrams (Models 2LEB8A and 2LEB9A)

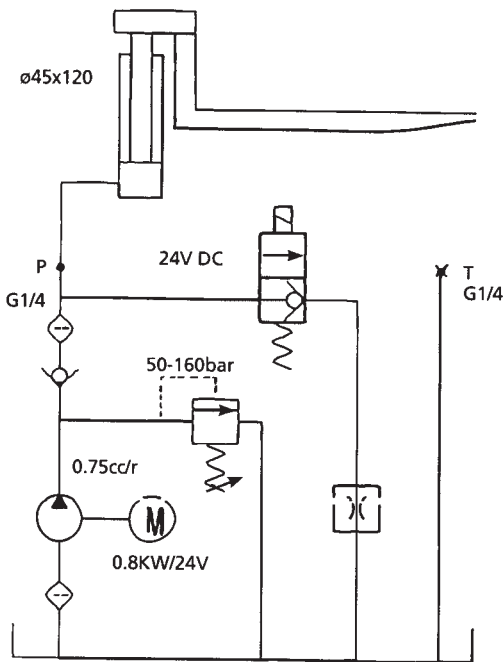


Figure 9 – Hydraulic Flow Diagram (Model 2LEB8A)

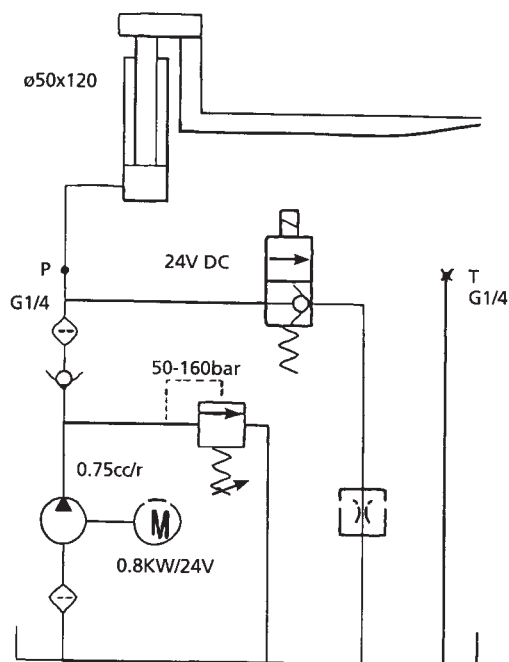


Figure 10 – Hydraulic Flow Diagram (Model 2LEB9A)

Dayton® Pallet Trucks

Electrical and Hydraulic Flow Diagrams (Model 2LEB8A)

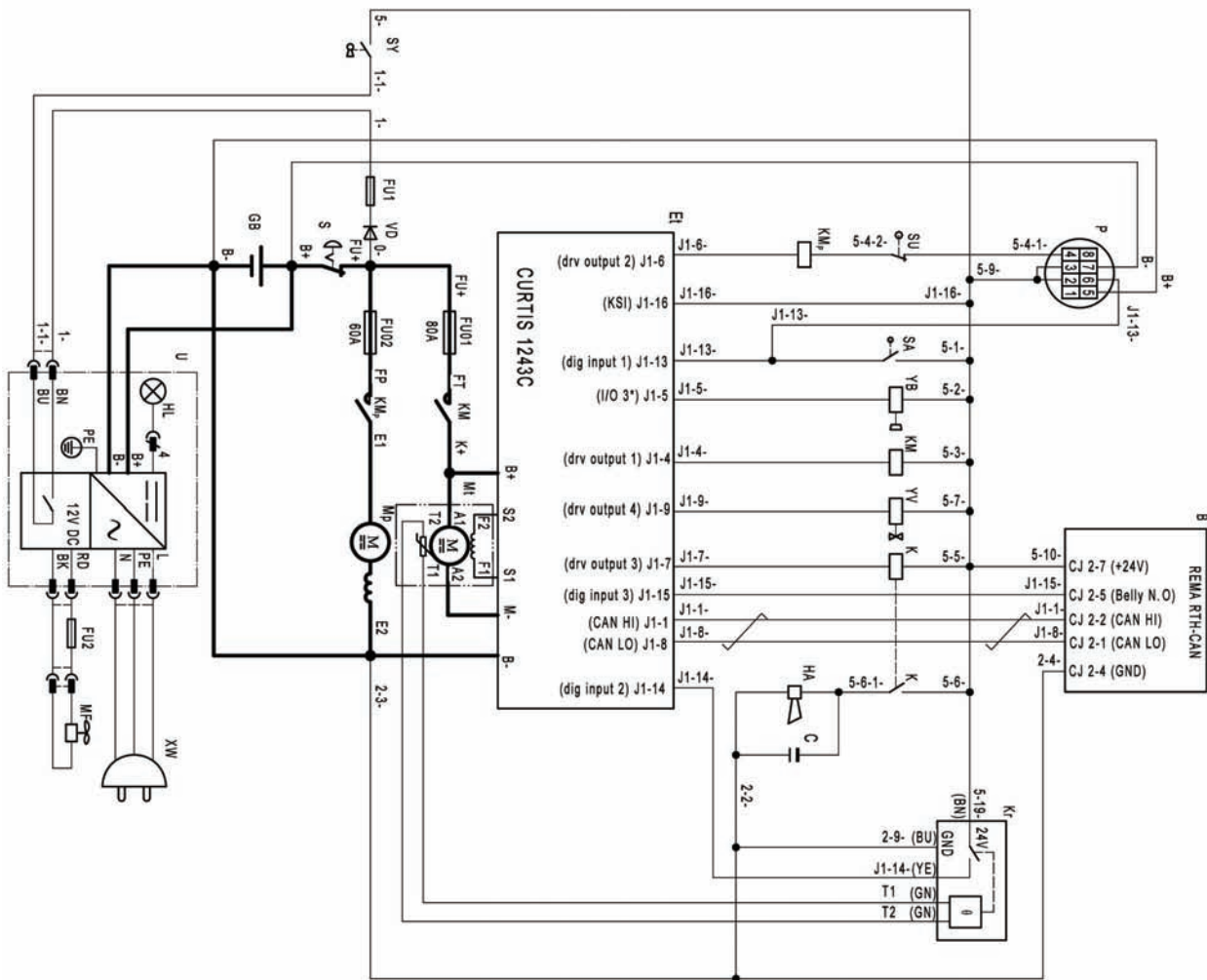


Figure 11 – Circuit Diagram

Models 2LEB8A and 2LEB9A

Electrical and Hydraulic Flow Diagrams (Model 2LEB8A) (Continued)

ENGLISH

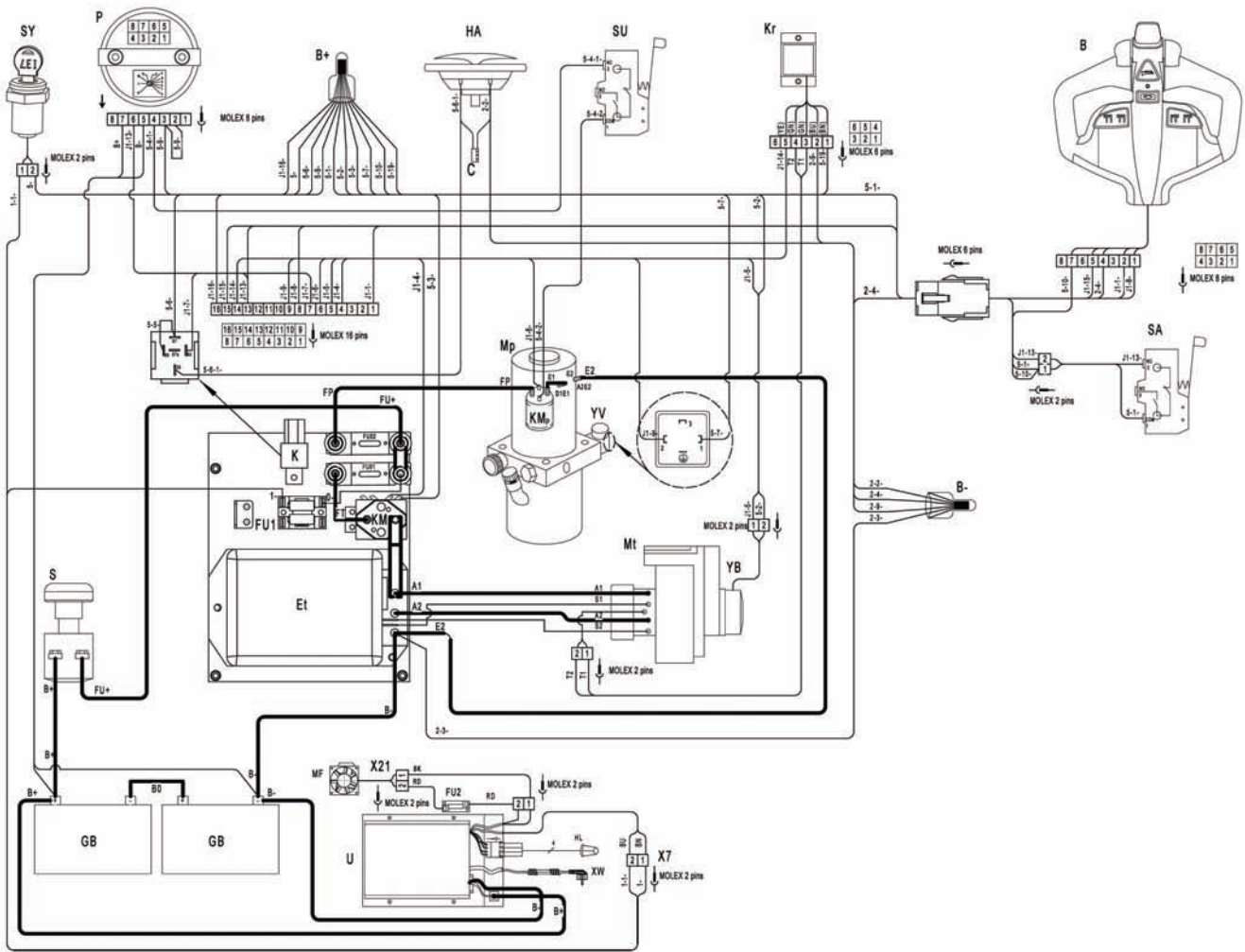


Figure 12 - Connection Diagram

Dayton® Pallet Trucks

Electrical and Hydraulic Flow Diagrams (Model 2LEB8A) (Continued)

Symbol	Description	Part No.	Qty.
GB	Battery, 12V/80Ah	MH2LEB833	2
FU01	Fuses, 80A	MH2LEB870G	1
FU02	Fuses, 60A	MH2LEB871G	1
FU1	Fuses, 10A	MH5RTA716G	1
FU2	Fuses, 1A	MH2LEB872G	1
Mp	Pump motor	MH2LEB873G	1
Mt	Traction motor,DC24V	MH2LEB884G	1
KMp	Lifting contactor	MH2LEB874G	1
KM	Main relay C100/120 DC24V	MH5RTA720G	1
YV	Electromagnetic valve	MH2LEB875G	1
YB	Electromagnetic brake	MH2LEB886G	1
Et	Traction controller, CURTIS 1243C	MH2LEB832	1
VD	Diodes, 1N5408	+	3
C	Capacitance, 50V/100uF	+	1
S	Emergency switch, ZDK31-250	MH2LEB883G	1
SY	Power key, LKS-101A	MH2LEB882G	1
SA	Interlock switch	MH2LEB847	1
SU	Lift limiting switch	MH2LEB836	1
P	Battery Indicator CURTIS 803	MH2LEB881G	1
K	Relay	MH2LEB876G	1
Kr	Module of Motor temperature, BD-W135/110	MH5RTA721G	1
HA	Horn	MH2LEC145	1
B	Control handle (94300-00)	MHWG5G	1
U	Charger, AC115V/8A	MH2LEB877G	1
XW	Spring line cable	MH2LEB878G	1
HL	Charging indicator	MH2LEB879G	1
MF	Fan, ADDA DC12V	MH2LEB880G	1

(+) Not available

Table 5 – Electrical Interface Legend for 2LEB8A

Models 2LEB8A and 2LEB9A

Electrical and Hydraulic Flow Diagrams (Model 2LEB9A)

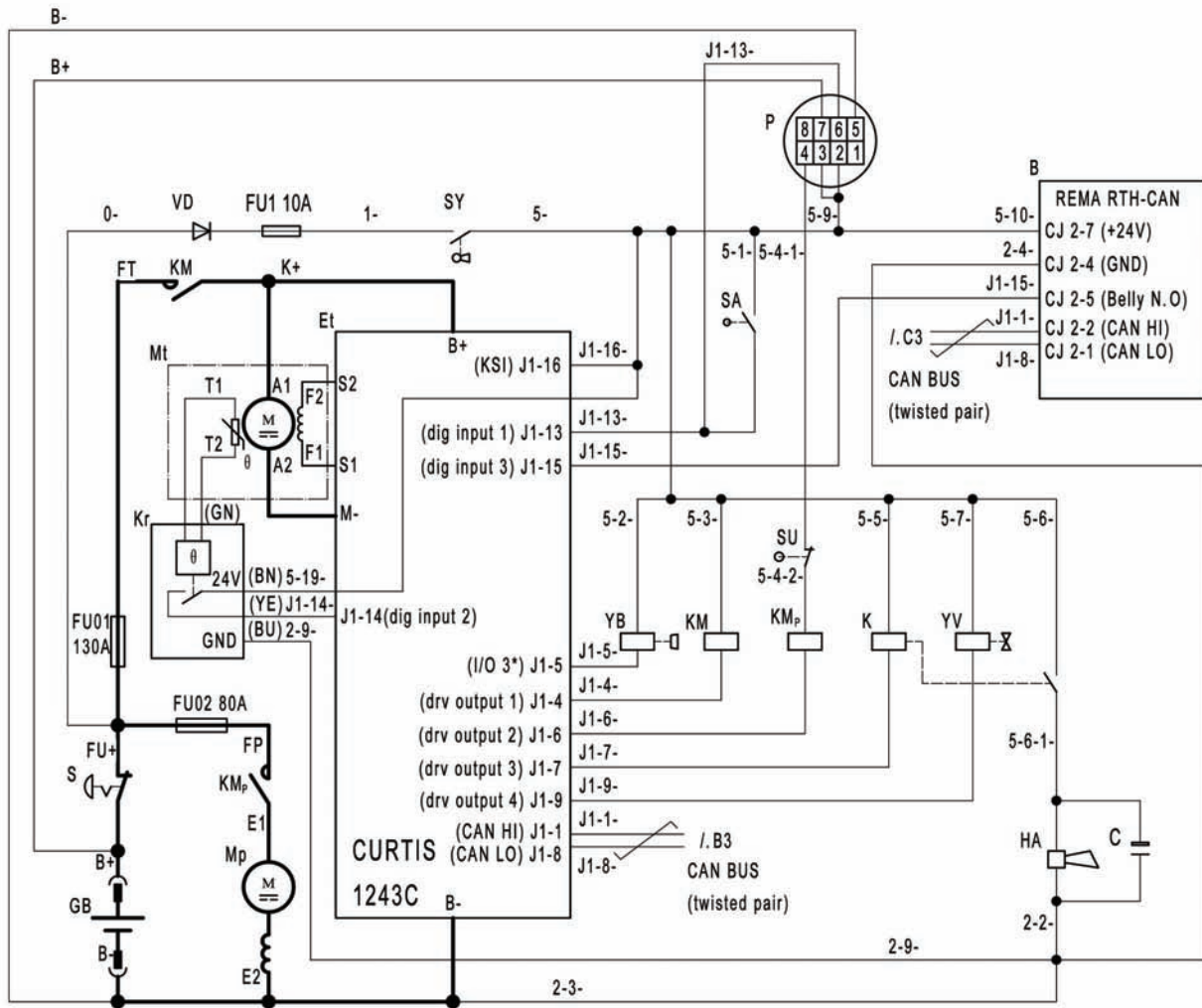


Figure 13 – Circuit Diagram

Models 2LEB8A and 2LEB9A

Electrical and Hydraulic Flow Diagrams (Model 2LEB9A) (Continued)

Symbol	Description	Part No.	Qty.
GB	Battery, 24V/210Ah	MH2LEB907	1
FU01	Fuses, 130A	MH5RTA715G	1
FU02	Fuses, 80A	MH2LEB950G	1
FU1	Fuses, 10A	MH5RTA716G	1
Mp	Pump motor	MH2LEB951G	1
Mt	Traction motor, DC24V	MH2LEB930	1
KMp	Lifting contactor	MH2LEB952G	1
KM	Main relay C100/120 DC24V	MH5RTA720G	1
YV	Electromagnetic valve	MH2LEB953G	1
YB	Electromagnetic brake	MH2LEB929	1
Et	Traction controller, CURTIS 1243C	MH2LEB920	1
VD	Diodes, 1N5408	+	3
C	Capacitance, 50V/100uF	+	1
S	Emergency switch, ZDK31-250	MH2LEB883G	1
SY	Power key, LKS-101A	MH2LEB882G	1
SA	Interlock switch	MH2LEB847	1
SU	Lift limiting switch	MH2LEB836	1
P	Battery Indicator CURTIS 803	MH2LEB881G	1
K	Relay ARL2F DC24V	MH5RTA719G	1
Kr	Module of Motor temperature, BD-W135/110	MH5RTA721G	1
HA	Horn	MH2LEC145	1
B	Control handle (94300-00)	MHWG5G	1

Table 6 – Electrical Interface Legend for 2LEB9A

(+) Not available

For Repair Parts, call 1-800-323-0620

24 hours a day – 365 days a year

Please provide following information:

- Model number
- Serial number (if any)
- Part description and number as shown in parts list

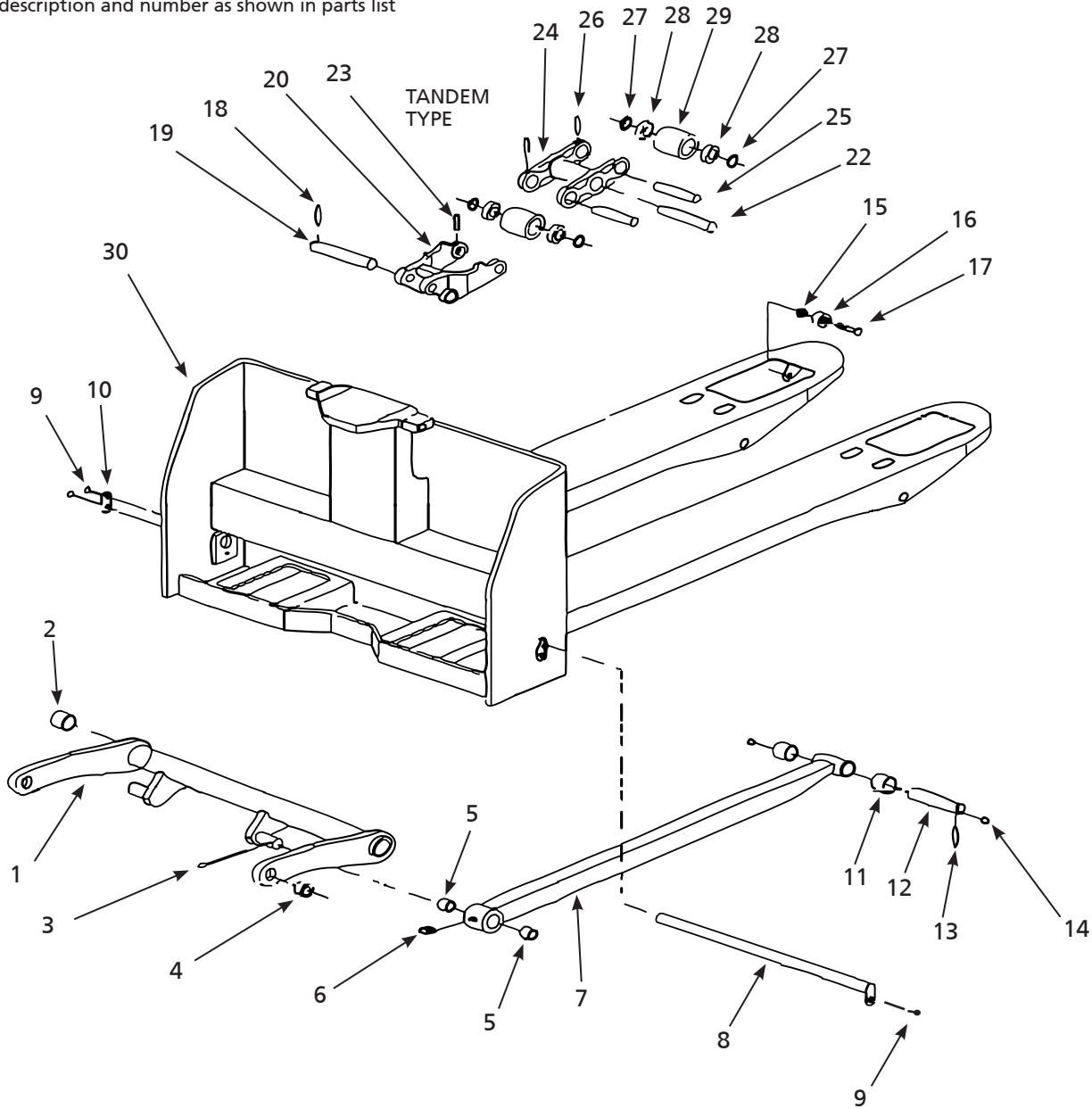


Figure 15 – Repair Parts Illustration for Pallet Truck Fork Frame (Model 2LEB8A)

Repair Parts List for Pallet Truck Fork Frame

Reference Number	Description	Part Number	Quantity
1	Rocker arm	MH2LEB801	1
	Rocker arm bushing kit	MH2LEB802	
2	Bushing	▲	2
3	Split pin	▲	2
4	Shoulder bushing	▲	2
	Push rod bushing kit	MH2LEB803	
5	Bushing	▲	2
6	Grease cup	▲	1
7	Push rod	MH2LEB804	1
	Rocker arm shaft kit	MH2LEB805	
8	Rocker arm shaft	▲	1
9	Screw	▲	3
10	Bracket	▲	1
	Push rod pin kit	MH2LEB806	
11	Bushing	▲	2
12	Shaft	▲	1
13	Roll pin	▲	1
14	Grease fitting	▲	2
	Entry roller kit	MH2LEB807	
15	Locking nut	▲	1
16	Entry roller	▲	1
17	Bolt	▲	1
	Roller frame kit	MH2LEB808	
18	Roll pin	▲	1
19	Pivot pin	▲	1
20	Roller frame	▲	1
21	Grease fitting	▲, Δ	1
	Tandem roller frame kit	MH2LEB809	
22	Pivot pin	▲	1
23	Roll pin	▲	1
24	Roller frame	▲	1
	Loading roller kit	MH2LEB810	
25	Axle pin	▲, ††	1
26	Roll pin	▲	1
27	Washer	▲	2
28	Bearing	▲	2
29	Loading roller (tandem)	▲	1
30	Fork frame	†	

(▲) Available as part of a kit only.

(Δ) Not shown.

(†) Not available.

(††) One axle pin per wheel.

For Repair Parts, call 1-800-323-0620

24 hours a day – 365 days a year

Please provide following information:

- Model number
- Serial number (if any)
- Part description and number as shown in parts list

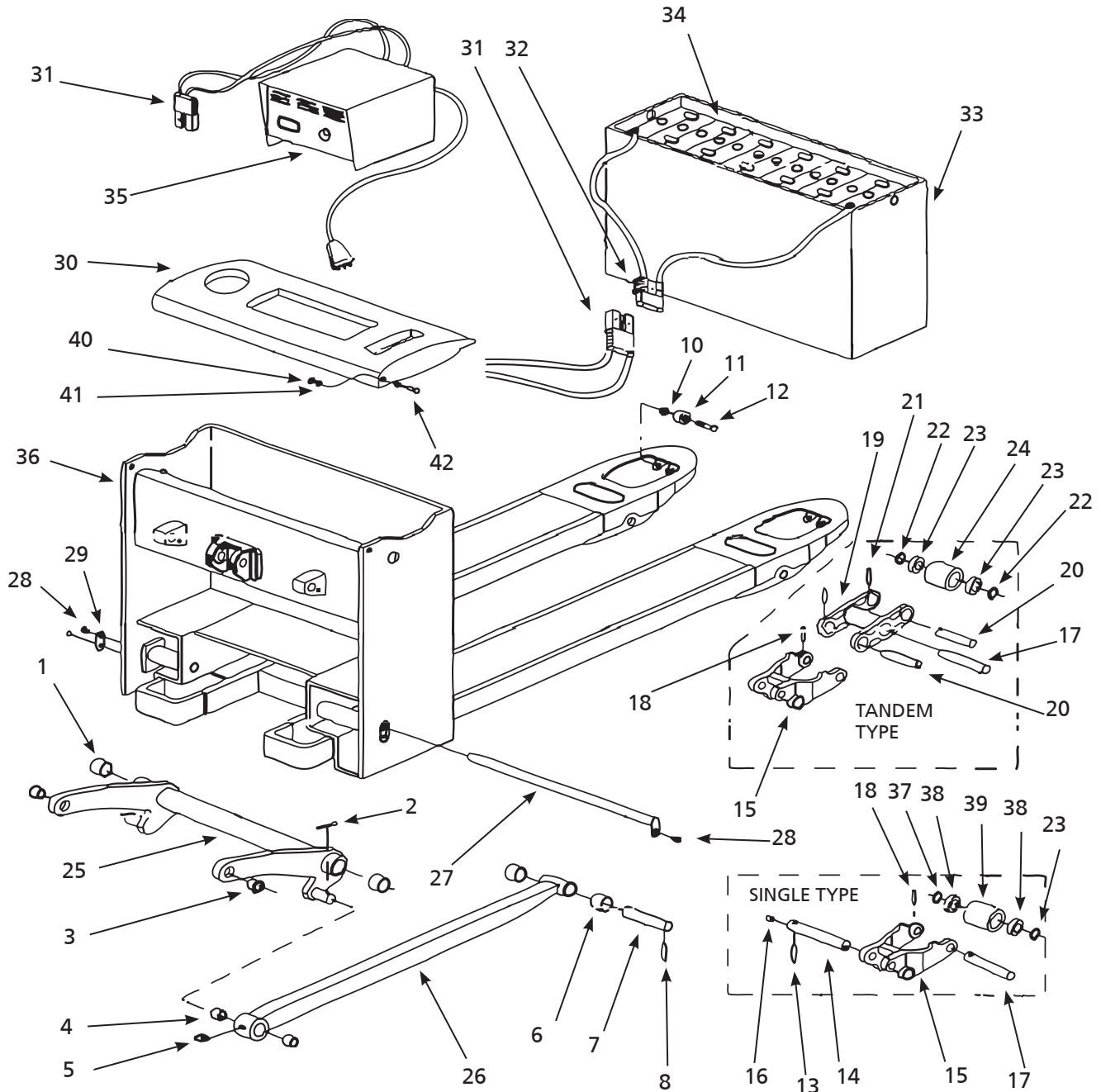


Figure 16 – Repair Parts Illustration for Pallet Truck Fork Frame (Model 2LEB9A)

Repair Parts List for Pallet Truck Fork Frame

Reference Number	Description	Part Number	Quantity
	Rocker arm bushing kit	MH2LEB802	
1	Bushing	▲	2
2	Split pin	▲	2
3	Shoulder bushing	▲	2
	Push rod bushing kit	MH2LEB803	
4	Bushing	▲	2
5	Grease cup	▲	1
	Push rod pin kit	MH2LEB806	
6	Bushing	▲	2
7	Shaft	▲	1
8	Roll pin	▲	1
9	Grease fitting	▲, Δ	2
	Entry roller kit	MH2LEB807	
10	Locking nut	▲	1
11	Entry roller	▲	1
12	Bolt	▲	1
	Roller frame kit	MH2LEB808	
13	Roll pin	▲	1
14	Pivot pin	▲	1
15	Roller frame	▲	1
16	Grease fitting	▲	1
	Tandem roller frame kit	MH2LEB809	
17	Pivot pin	▲	1
18	Roll pin	▲	1
19	Roller frame	▲	1
	Loading roller kit	MH2LEB810	
20	Axle pin	▲, ††	1
21	Roll pin	▲	1
22	Washer	▲	2
23	Bearing	▲	2
24	Loading roller (tandem)	▲	1
25	Rocker arm	MH2LEB901	1
26	Push rod	MH2LEB902	1
	Rocker arm shaft kit	MH2LEB903	
27	Rocker arm shaft	▲	1
28	Screw	▲	3
29	Bracket	▲	1
30	Battery cover	MH2LEB904	1
	Battery kit	MH5RTC223G	
32	Plug (female)	▲	1
33	Battery box	▲	1
34	Battery 24V/210Ah	▲	1
	Charger kit	MH5RTC222G	
31	Plug (male)	▲	1
35	Battery charger, AC110V/30A	▲	1
36	Fork frame	†	
37	Washer (for single type)	†	
38	Bearing (for single type)	†	
39	Loading roller (for single type)	†	
40	Lock nut	†	
41	Washer	†	
42	Screw	†	

(▲) Available as part of a kit only.

(Δ) Not shown.

(†) Not available.

(††) One axle pin per wheel.

For Repair Parts, call 1-800-323-0620

24 hours a day – 365 days a year

Please provide following information:

- Model number
- Serial number (if any)
- Part description and number as shown in parts list

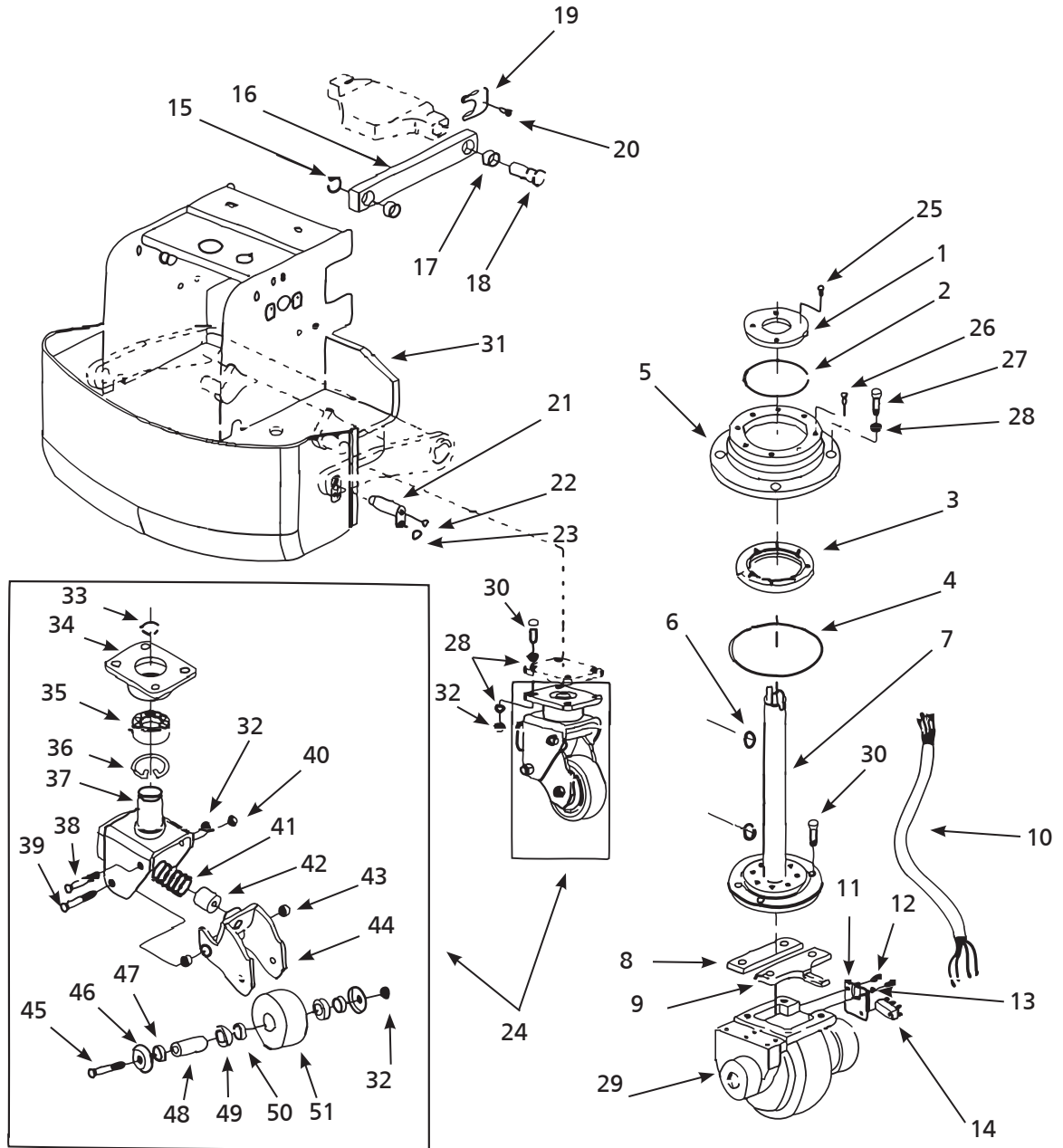


Figure 17 – Repair Parts Illustration for Pallet Truck Electric Compartment (Model 2LEB8A)

Repair Parts List for Pallet Truck Electric Compartment

Reference Number	Description	Part Number	Quantity
1	Bearing cover	MH2LEB811	1
	Bearing kit	MH2LEB812	
2	O-ring	▲	1
3	Bearing	▲	1
4	O-ring	▲	1
5	Bearing seat	MH2LEB813	1
6	Protective sleeve	MH2LEB814	1
7	Shaft	MH2LEB815	1
	Plate kit	MH2LEB816	
8	Linking plate	▲	1
9	Baffle	▲	1
10	Cable	MH2LEB817	1
	Switch kit	MH2LEB818	
11	Plate	▲	1
12	Screw	▲	2
13	Washer	▲	2
14	Pole	▲	1
	Linking plate kit	MH2LEB819	
15	Snap ring	▲	1
16	Linking plate	▲	1
17	Bushing	▲	2
18	Shaft	▲	1
19	Locking board	▲	1
20	Screw	▲	1
	Pivot kit	MH2LEB820	
21	Pivot pin	▲	1
22	Screw	▲	1
23	Screw	▲	1
24	Swivel caster	MH2LEB821	1
25	Screw	†	
26	Screw	†	
27	Screw	†	
28	Elastic washer	†	
29	Drive wheel kit (See Page 46-47)	MH2LEB888G	1
30	Screw	†	
31	Box body	†	
32	Locking nut	†	
33	Retaining ring	†	
34	Interconnects	†	
35	Bearing	†	
36	Snap ring	†	
37	Steering wheel frame	†	
38	Bolt	†	
39	Bolt	†	
40	Locking nut	†	
41	Spring	†	
42	Spring	†	
43	Bushing	†	
44	Rotating arm	†	
45	Bolt	†	
46	Dust cover	†	
47	Washer	†	
48	Axle	†	
49	Bearing	†	
50	Washer	†	
51	Steering wheel	†	

(▲) Available as part of a kit only.

(†) Not available.

For Repair Parts, call 1-800-323-0620

24 hours a day – 365 days a year

Please provide following information:

- Model number
- Serial number (if any)
- Part description and number as shown in parts list

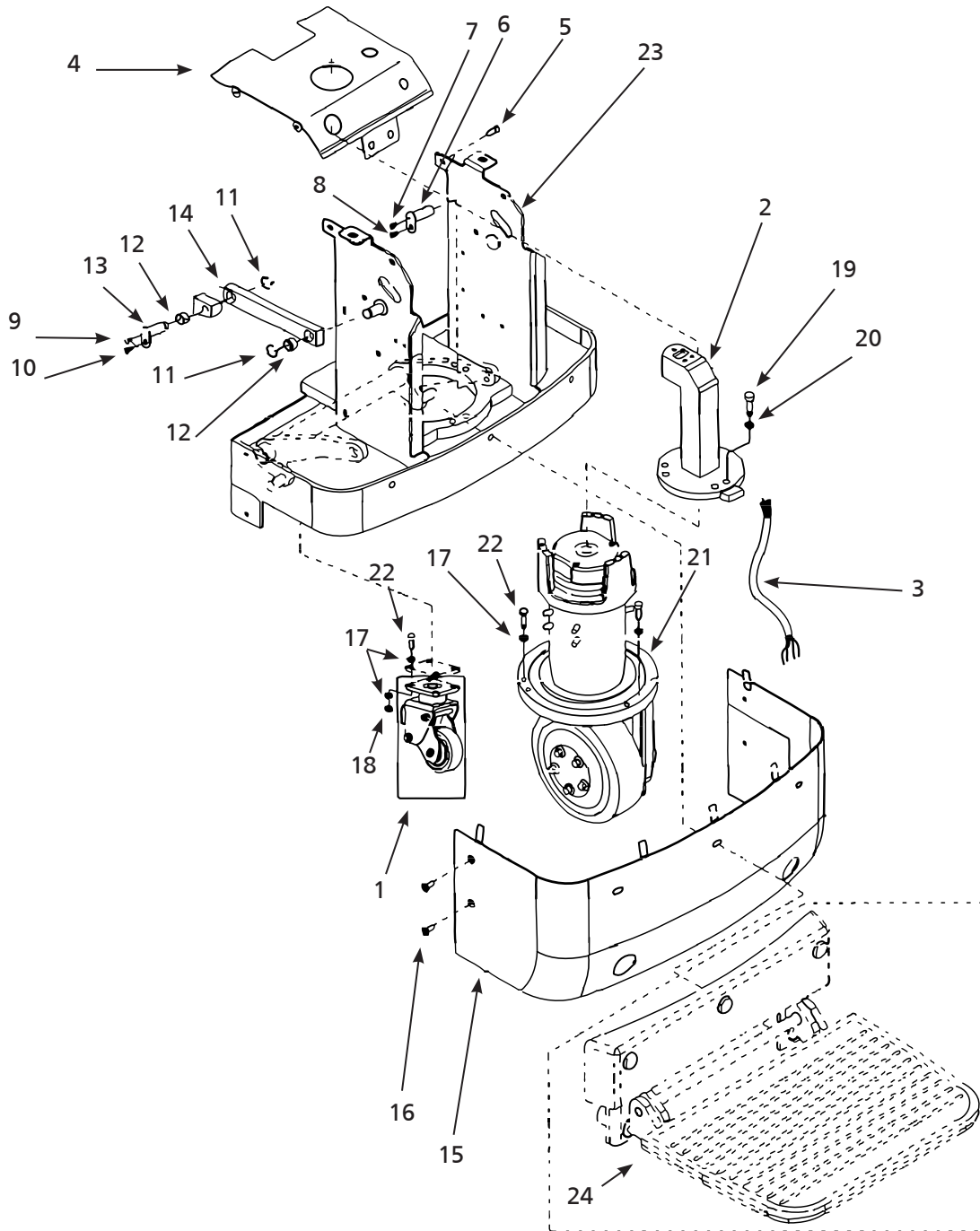


Figure 18 – Repair Parts Illustration for Pallet Truck Electric Compartment (Model 2LEB9A)

Repair Parts List for Pallet Truck Electric Compartment

Reference Number	Description	Part Number	Quantity
1	Swivel caster	MH2LEB821	1
2	Handle holder	MH2LEB910	1
3	Cable	MH2LEB911	1
	Control cover kit	MH2LEB912	
4	Control cover	▲	1
5	Screw	▲	4
	Pivot kit	MH2LEB913	
6	Pivot pin	▲	1
7	Screw	▲	1
8	Screw	▲	1
	Linking plate kit	MH2LEB914	
9	Screw	▲	1
10	Screw	▲	1
11	Snap ring	▲	2
12	Bushing	▲	2
13	Pivot	▲	1
14	Linking plate	▲	1
	Outer covering kit	MH2LEB915	
15	Outer covering	▲	1
16	Screw	▲	4
17	Elastic washer	†	
18	Locking nut	†	
19	Screw	†	
20	Elastic washer	†	
21	See drive wheel breakout	†	
22	Bolt	†	
23	Box body (685 mm wide)	†	
24	See platform breakout	†	

(▲) Available as part of a kit only.

(†) Not available.

For Repair Parts, call 1-800-323-0620

24 hours a day – 365 days a year

Please provide following information:

- Model number
- Serial number (if any)
- Part description and number as shown in parts list

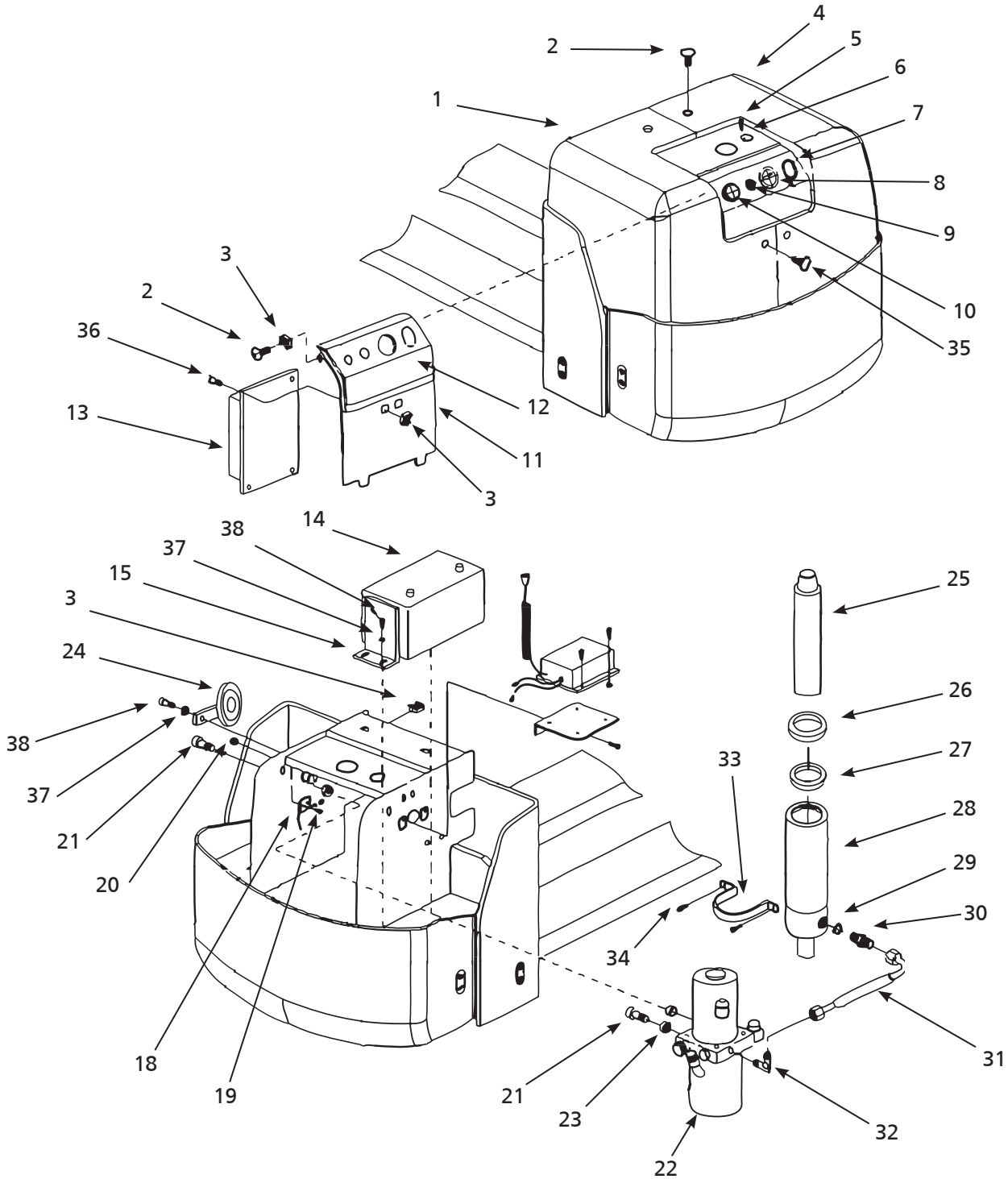


Figure 19 – Repair Parts Illustration for Pallet Truck Hydraulic and Electric Components (Model 2LEB8A)

Repair Parts List for Pallet Truck Hydraulic and Electric Components

Reference Number	Description	Part Number	Quantity
1	Cover, left side	MH2LEB822	1
	Nut/Screw kit	MH2LEB823	
2	Screw	▲	2
3	Nut	▲	2
4	Cover, right side	MH2LEB824	1
	Plug kit	MH2LEB825	
5	Screw	▲	2
6	Plug	▲	1
7	Protective sleeve	MH2LEB826	1
8	Battery indicator, CURTIS 803	MH2LEB881G	1
9	Power key, LKS-101A	MH2LEB882G	1
10	Emergency switch, ZDK31-250	MH2LEB883G	1
11	Bracket	MH2LEB830	1
12	Cover	MH2LEB831	1
13	Controller Assy. (See next page)	+	1
14	Battery	MH2LEB833	2
15	Battery mount bracket	MH2LEB834	2
	Switch kit	MH2LEB836	
18	Switch	▲	1
19	Screw	▲	2
20	Nut	▲	2
	Pump kit	MH2LEB837	
21	Bolt	▲	2
22	Pump	▲	1
23	Bushing	▲	2
24	Horn	MH2LEB838	1
25	Piston rod	MH2LEB839	1
	Ring seal kit	MH2LEB840	
26	Dust ring	▲	1
27	O-ring	▲	1
28	Cylinder body	MH2LEB841	1
	Hydraulic linkage kit	MH2LEB842	
29	Seal washer	▲	1
30	Joint	▲	1
31	Pipe	▲	1
32	Joint	▲	1
	Bracket kit	MH2LEB843	
33	Bracket	▲	1
34	Screw	▲	2
35	Screw	†	
36	Screw	†	
37	Washer	†	
38	Screw	†	

(▲) Available as part of a kit only.

(†) Not available.

For Repair Parts, call 1-800-323-0620

24 hours a day – 365 days a year

Please provide following information:

- Model number
- Serial number (if any)
- Part description and number as shown in parts list

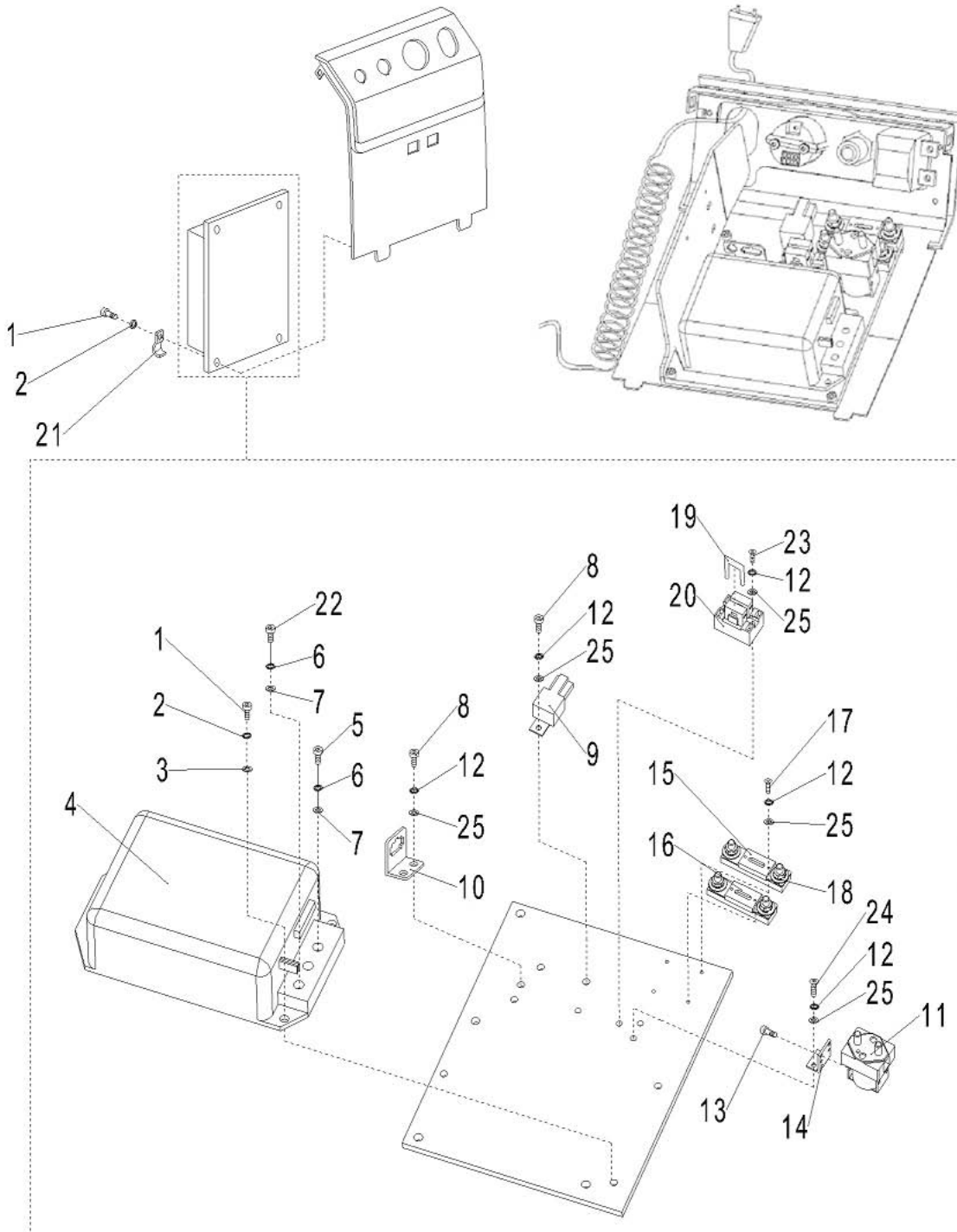


Figure 20 – Repair Parts Illustration for Pallet Truck Controller Assy. (Model 2LEB8A)

Repair Parts List for Pallet Truck Controller Assy.(2LEB8)

Reference Number	Description	Part Number	Quantity
1	Screw, M6x16	++	7
2	Elastic washer, 6	++	7
3	Flat washer, 6	++	3
4	Controller, CURTIS 1243C-4381	MH2LEB832	1
5	Screw, M8x16	++	1
6	Elastic washer, 8	++	3
7	Flat washer, 8	++	3
8	Screw, M4x10	++	3
9	Relay	MH2LEB876G	1
10	Fixxing plat for plug	+	1
11	Main relay C100/120 DC24V	MH5RTA720G	1
12	Elastic washer, 4	++	11
13	Screw, M4x5	++	2
14	Fixxing plate for main relay	+	1
15	Fuse, 60A	MH2LEB871G	1
16	Fuse, 80A	MH2LEB870G	1
17	Screw, M4x18	++	4
18	Fuse seat	+	2
19	Fuse, 10A	MH5RTA716G	1
20	Fuse seat	+	1
21	Fixxing plate for cable	+	1
22	Screw, M8x12	++	2
23	Screw, M4x30	++	2
24	Screw, M4x12	++	2
25	Flat washer, 4	++	11

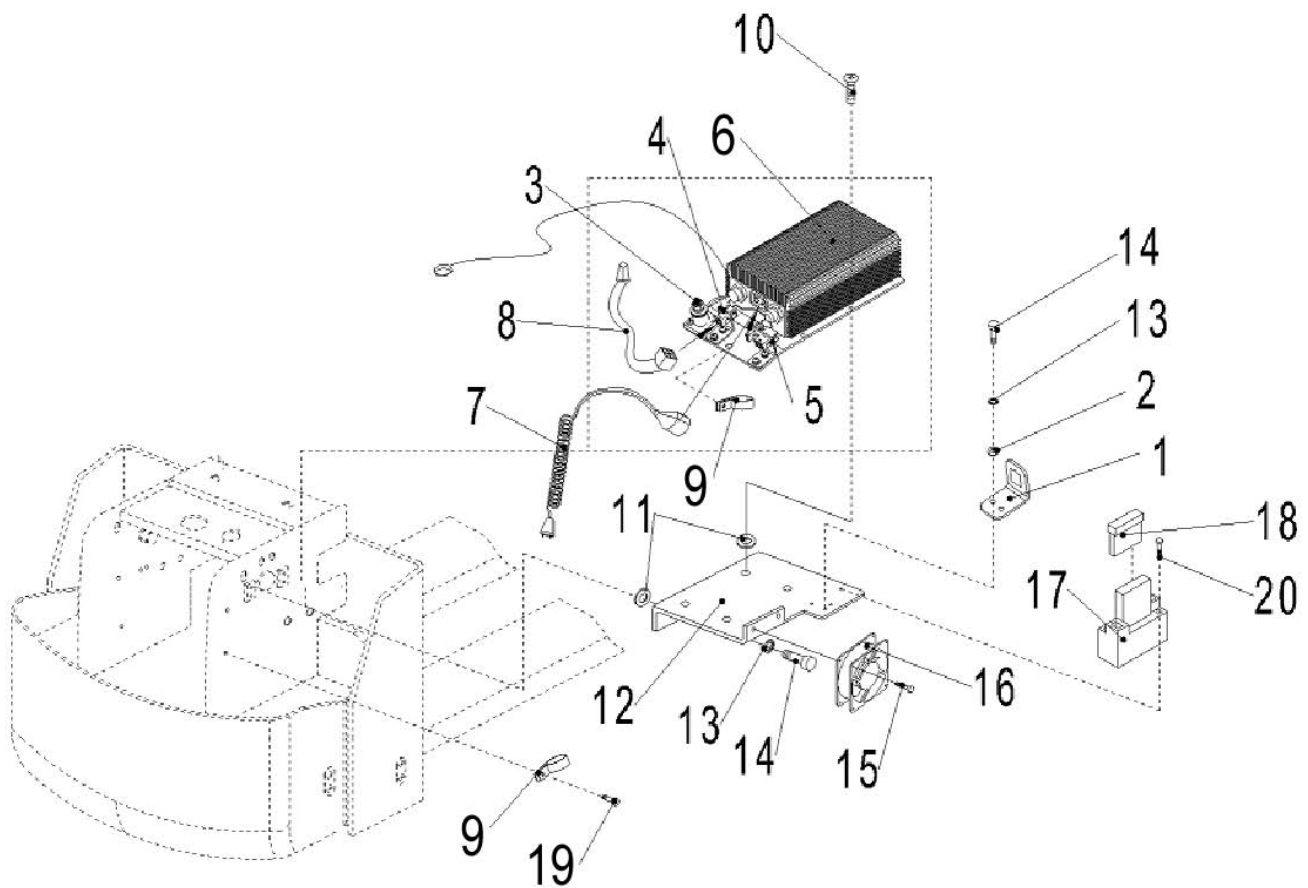
(†) Not available.

(++) Common hardware, not offered as a replacement part.

For Repair Parts, call 1-800-323-0620**24 hours a day – 365 days a year**

Please provide following information:

- Model number
- Serial number (if any)
- Part description and number as shown in parts list

**Figure 21 – Repair Parts Illustration for Pallet Truck Charger Assy. (Model 2LEB8A)**

Repair Parts List for Pallet Truck Charger Assy.(2LEB8)

Reference Number	Description	Part Number	Quantity
1	Fixing plate for cable	+	1
2	Flat washer, 5	++	2
3	Charger kit	MH2LEB877G	
4	Binding post, M8	▲	1
4	Fixing plate	▲	1
5	Fixing plate for plug	▲	1
6	Charger, AC115V/8A	▲	1
7	Spring line cable	MH2LEB878G	1
8	Charging indicator	MH2LEB879G	1
9	R type clamp	+	2
10	Screw, M4x8	++	4
11	Rubber washer	+	8
12	Bracket for charger	+	1
13	Elastic washer, 5	++	6
14	Screw, M5x12	++	6
15	Screw, M4x30	++	4
16	Fan, ADDA DC12V	MH2LEB880G	1
17	Seat for fuse	+	1
18	Fuse, 1A	MH2LEB872G	1
19	Screw, M4x8	++	1
20	Screw, M3x25	++	2

(▲) Available as part of a kit only.

(+) Not available.

(++) Common hardware, not offered as a replacement part.

For Repair Parts, call 1-800-323-0620

24 hours a day – 365 days a year

Please provide following information:

- Model number
- Serial number (if any)
- Part description and number as shown in parts list

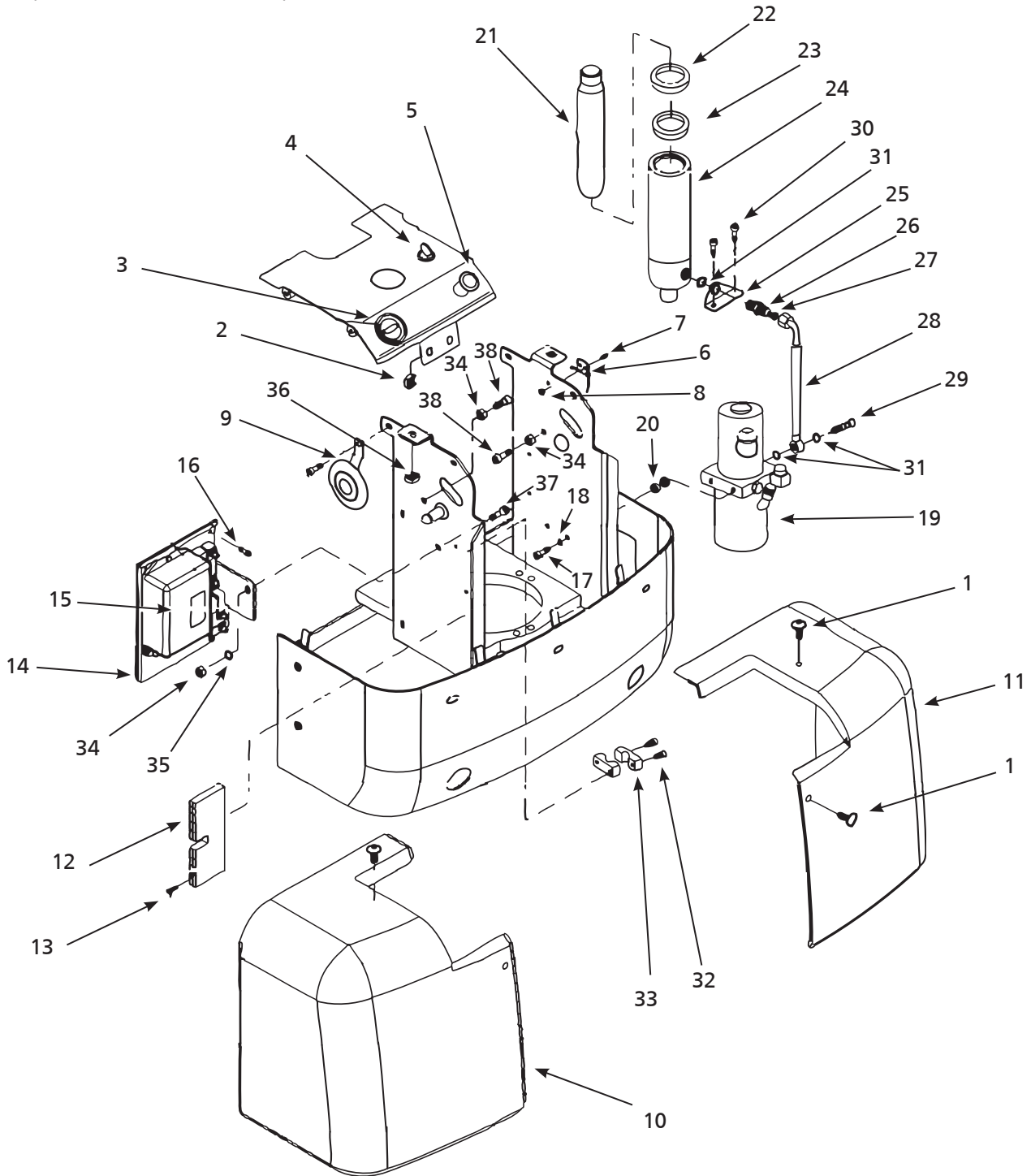


Figure 22 – Repair Parts Illustration for Pallet Truck Hydraulic and Electric Components (Model 2LEB9A)

Repair Parts List for Pallet Truck Hydraulic and Electric Components

Reference Number	Description	Part Number	Quantity
	Nut/Screw kit	MH2LEB823	
1	Screw	▲	1
2	Nut	▲	1
3	Battery Indicator CURTIS 803	MH2LEB881G	1
4	Power key, LKS-101A	MH2LEB882G	1
5	Emergency switch, ZDK31-250	MH2LEB883G	1
	Switch kit	MH2LEB836	
6	Switch	▲	1
7	Screw	▲	2
8	Nut	▲	2
9	Horn	MH2LEB838	1
10	Cover, left side	MH2LEB916	1
11	Cover, right side	MH2LEB917	1
	Connection slot kit	MH2LEB918	
12	Connection slot	▲	1
13	Screw	▲	2
14	Controller bracket	+	1
15	Controller Assy. (See next page)	+	1
16	Screw, M8x16	+	4
	Pump kit	MH2LEB921	
17	Bolt	▲	2
18	Washer	▲	2
19	Pump	▲	1
20	Washer	▲	4
21	Piston rod	MH2LEB922	1
	Ring seal kit	MH2LEB923	
22	Dust ring	▲	1
23	O-ring	▲	1
24	Cylinder body	MH2LEB924	1
	Hydraulic linkage kit	MH2LEB925	
25	Cylinder mounting bracket	▲	1
26	Joint	▲	1
27	O-ring	▲	1
28	Pipe	▲	1
29	Bolt	▲	1
30	Screw	▲	2
31	Seal washer	▲	3
	Cable holder kit	MH2LEB926	
32	Screw	▲	2
33	Clip for cable	▲	2
34	Nut	†	
35	Elastic washer	†	
36	Nut	†	
37	Bolt	†	
38	Screw	†	

(▲) Available as part of a kit only.

(†) Not available.

For Repair Parts, call 1-800-323-0620

24 hours a day – 365 days a year

Please provide following information:

- Model number
- Serial number (if any)
- Part description and number as shown in parts list

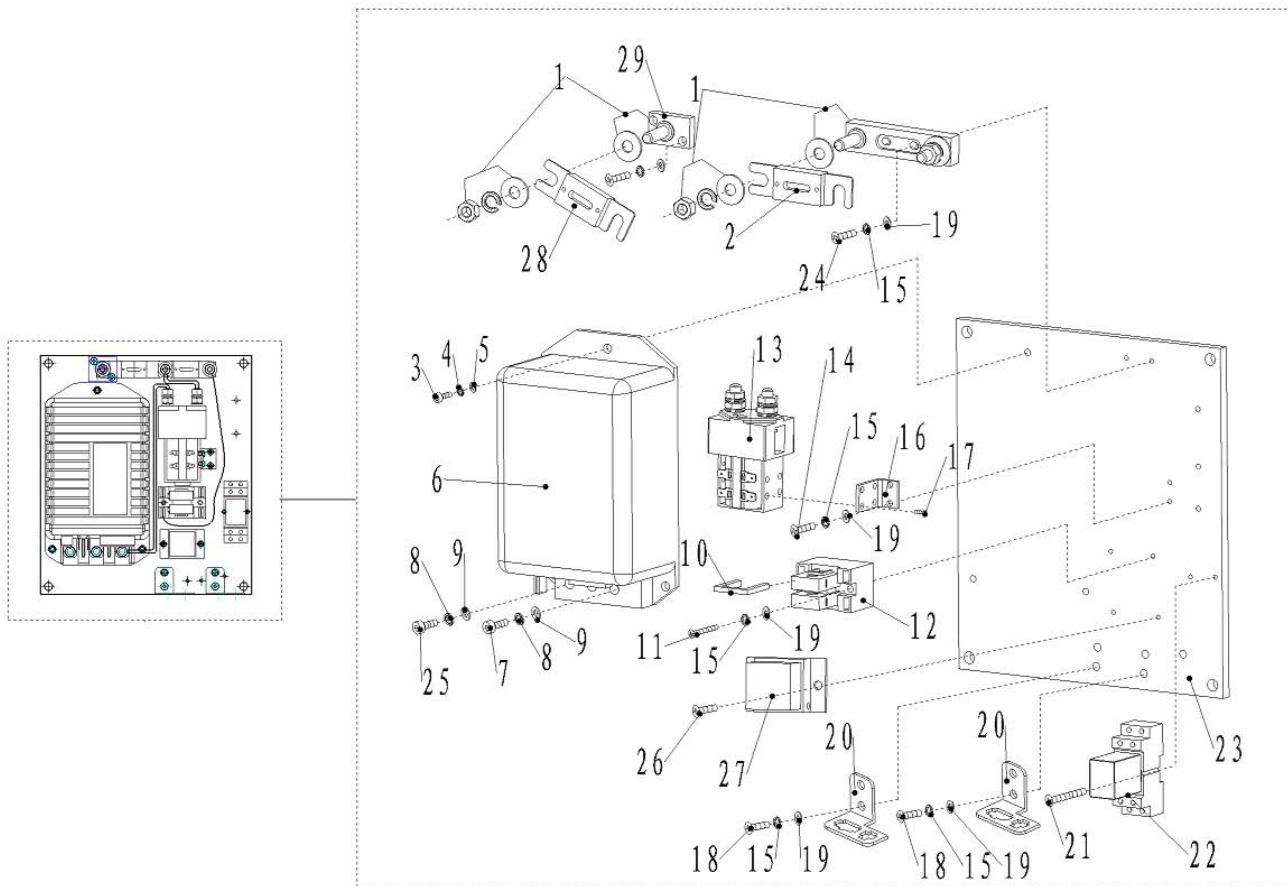


Figure 23– Repair Parts Illustration for Pallet Truck Controller Assy. (Model 2LEB9A)

Repair Parts List for Pallet Truck Controller Assy. (2LEB9A)

Reference Number	Description	Part Number	Quantity
1	Fuse seat SYY	+	1
2	Fuse, 130A	MH5RTA715G	1
3	Screw, M6x16	++	3
4	Elastic washer, 6	++	3
5	Flat washer, 6	++	3
6	Controller, CURTIS 1243C-4381	MH2LEB920	1
7	Screw, M8x12	++	2
8	Elastic washer, 8	++	3
9	Flat washer, 8	++	3
10	Fuse, 10A	MH5RTA716G	1
11	Screw, M4x30	++	2
12	Fuse seat	+	1
13	Main relay C100/120 DC24V	MH5RTA720G	1
14	Screw, M4x12	++	4
15	Elastic washer, 4	++	12
16	Bracket for mail relay	+	1
17	Screw, M4x5	++	2
18	Screw, M4x10	++	4
19	Flat washer, 4	++	12
20	Fixxing plate for plug	+	2
21	Screw, M3x20	++	2
22	Relay ARL2F DC24V	MH5RTA719G	1
23	Al plate	+	1
24	Screw, M4x18	++	2
25	Screw, M8x16	++	1
26	Screw, M4x8	++	2
27	Module of Motor temperature	MH5RTA721G	1
28	Fuse, 80A	MH2LEB950G	1
29	Binding post, M8	+	1

(+) Not available.

(++) Common hardware, not offered as a replacement part.

For Repair Parts, call 1-800-323-0620

24 hours a day – 365 days a year

Please provide following information:

- Model number
- Serial number (if any)
- Part description and number as shown in parts list

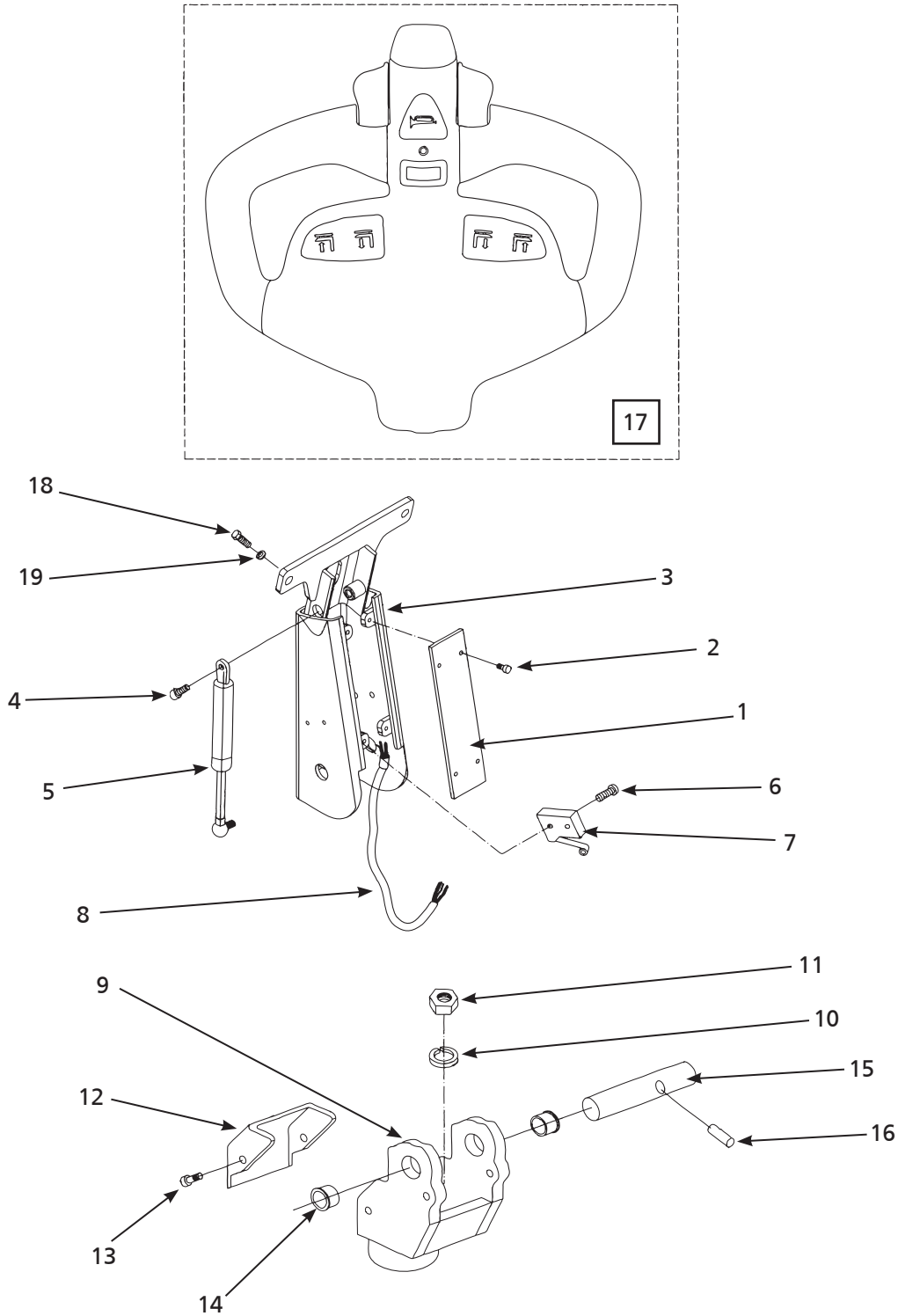


Figure 24 – Repair Parts Illustration for Pallet Truck Handle Assembly (Model 2LEB8A)

Repair Parts List for Pallet Truck Handle Assembly

Reference Number	Description	Part Number	Quantity
	Handle cover kit	MH2LEB844	
1	Cover plate	▲	1
2	Screw	▲	1
3	Handle arm	MH2LEB845	1
	Air piston kit	MH2LEB846	
4	Screw	▲	1
5	Air piston	▲	1
	Switch kit	MH2LEB847	
6	Screw	▲	2
7	Switch	▲	1
8	Control cable	MH2LEB848	1
	Handle connector bracket kit	MH2LEB849	
9	Handle connector bracket	▲	1
10	Elastic washer	▲	2
11	Locking nut	▲	2
12	Cover	▲	1
13	Screw	▲	2
	Pivot pin kit	MH2LEB850	
14	Shoulder bushing	▲	2
15	Shaft	▲	1
16	Roll pin	▲	1
17	Handle kit	†	
18	Bolt	††	
19	Nylon washer	††	

(▲) Available as part of a kit only.

(†) Refer to control handle kit illustration and parts list on pages 38 and 39.

(††) Not available.

For Repair Parts, call 1-800-323-0620

24 hours a day – 365 days a year

Please provide following information:

- Model number
- Serial number (if any)
- Part description and number as shown in parts list

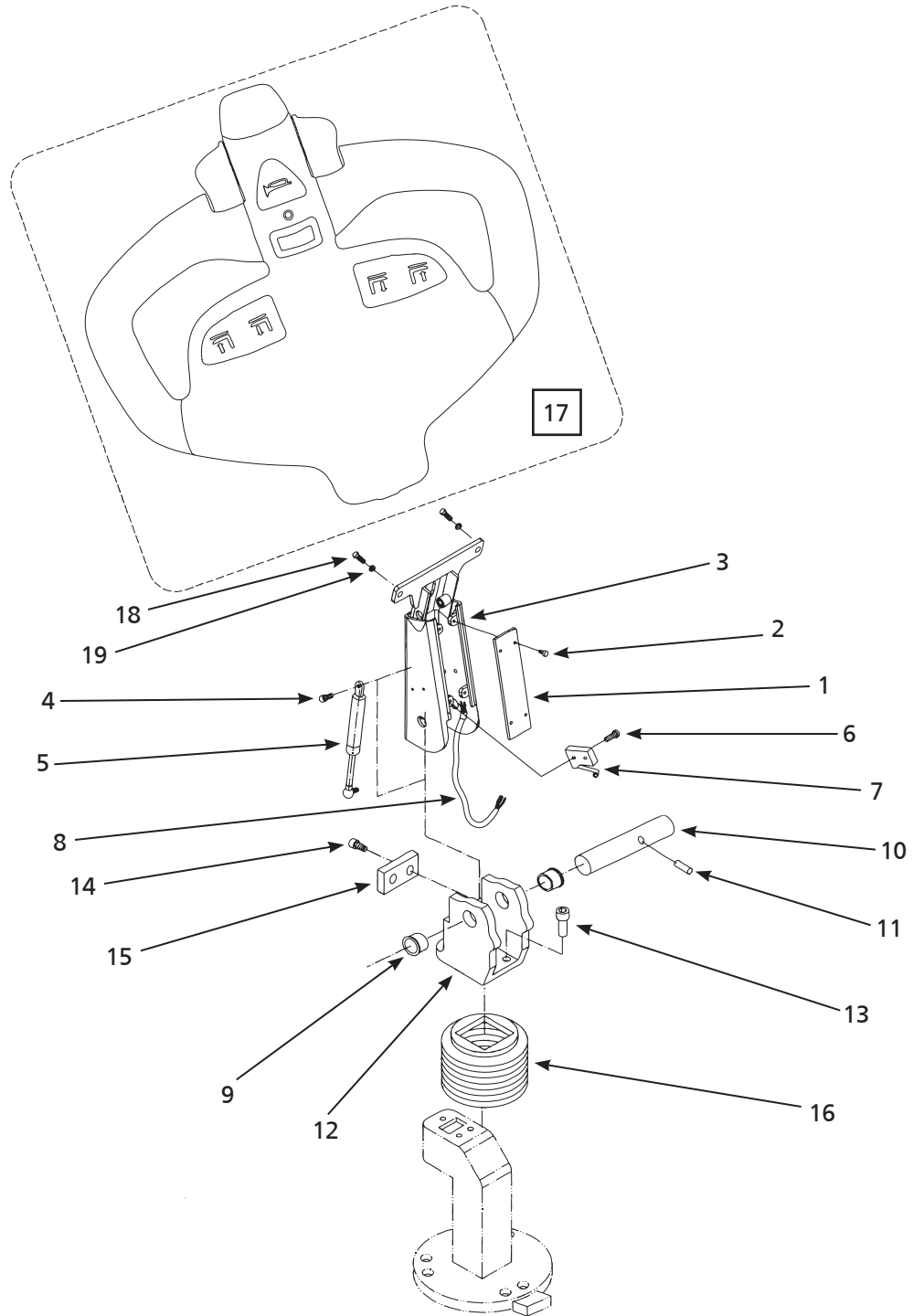


Figure 25 – Repair Parts Illustration for Pallet Truck Handle Assembly (Model 2LEB9A)

Repair Parts List for Pallet Truck Handle Assembly

Reference Number	Description	Part Number	Quantity
	Handle cover kit	MH2LEB941	
1	Cover plate	▲	1
2	Screw	▲	1
3	Handle arm	MH2LEB942	1
	Air piston kit	MH2LEB846	
4	Screw	▲	1
5	Air piston	▲	1
	Switch kit	MH2LEB847	
6	Screw	▲	2
7	Switch	▲	1
8	Control cable	MH2LEB943	1
	Pivot pin kit	MH2LEB850	
9	Shoulder bushing	▲	2
10	Shaft	▲	1
11	Roll pin	▲	1
	Handle connector bracket kit	MH2LEB927	
12	Handle connector bracket	▲	1
13	Screw	▲	3
14	Screw	▲	2
15	Anti-vibration pad	▲	1
16	Dust cover	MH2LEB928	1
17	Handle kit	†	
18	Bolt	††	
19	Nylon washer	††	

(▲) Available as part of a kit only.

(†) Refer to control handle kit illustration and parts list on pages 38 and 39.

(††) Not available.

For Repair Parts, call 1-800-323-0620

24 hours a day – 365 days a year

Please provide following information:

- Model number
- Serial number (if any)
- Part description and number as shown in parts list

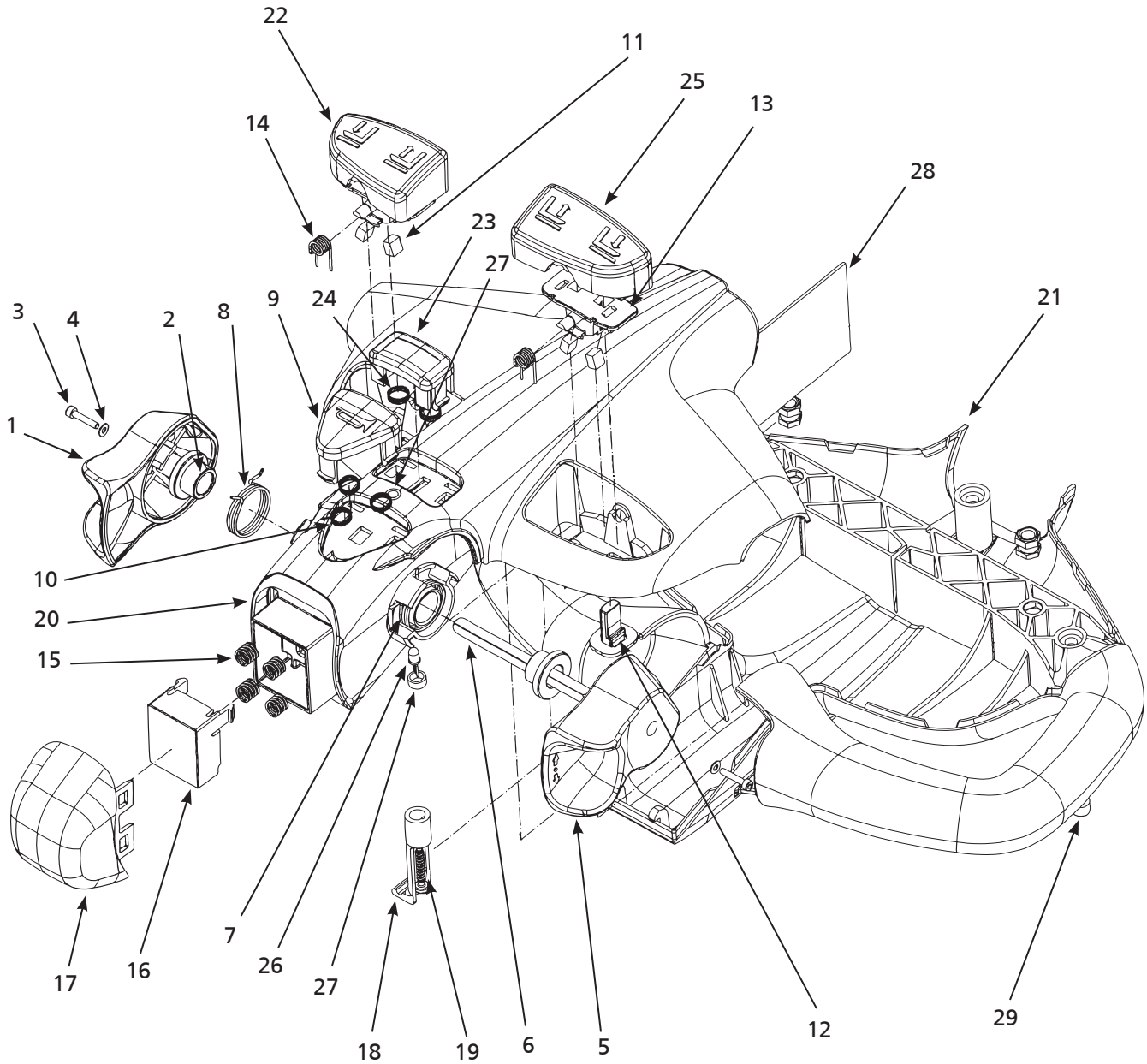


Figure 26 – Repair Parts Illustration for Pallet Truck Control Handle

Repair Parts List for Pallet Truck Control Handle

Reference Number	Description	Part Number	Quantity
	Butterfly knob kit	MH2LEB851	
1	Butterfly knob left	▲	1
2	Bearing for camshaft	▲	2
3	Screw M3	▲	2
4	Washer	▲	2
5	Butterfly knob right	▲	1
6	Shaft	▲	1
7	Spring right hand throttle torsion	▲	1
8	Spring left hand throttle torsion	▲	1
	Horn button kit	MH2LEB852	
9	Horn button	▲	1
10	Spring	▲	3
	Seesaw switch kit	MH2LEB853	
11	Magnet	▲	4
12	Sensor for rocker lever	▲	2
13	Magnet holder for seesaw	▲	2
14	Hinge spring	▲	2
	Emergency stop button kit	MH2LEB854	
15	Spring	▲	4
16	Contact base	▲	1
17	Switch cover	▲	1
	PCB clip kit	MH2LEB855	
18	Printed circuit board clip	▲	1
19	Screw M4x25	▲	1
20	Upper part	MH2LEB856	1
21	Lower part	MH2LEB857	1
22	Seesaw left	MH2LEB858	1
	High/Low speed button kit	MH2LEB859	
23	Option cover	▲	1
24	Spring	▲	2
25	Seesaw right	MH2LEB860	1
	LED	MH2LEB861	
26	LED bicolor	▲	1
27	Housing for LED two parts	▲	1
28	Printed circuit board	MH2LEB862	1
29	Screw	†	

(▲) Available as part of a kit only.

(†) Not available.

Repair Parts List for Pallet Truck Drive Wheel

Reference Number	Description	Part Number	Quantity
1	Retaining ring, 20	+	1
2	Bearing, 6204	+	1
3	Key, A6x16	+	1
4	Axle with gear	+	1
5	Motor frame	+	1
6	Gear	+	1
7	Retaining ring, 15	+	1
8	Retaining ring, 17	+	1
9	Key, A5x15	+	1
10	Key , A5x15	+	1
11	Traction motor, DC24V	MH2LEB884G	1
12	Screw, M8x25	+	5
13	Bearing, 16006	+	1
14	Gear	+	1
15	Seal ring, 188x202x10	+	1
16	Inner gear	+	1
17	Bearing, 6022	+	1
18	Retaining ring, 170	+	1
19	O - ring, 110x3.55	+	1
20	Seat of seal ring	+	1
	Replacement wheel kit	MH2LEB885G	
21	Wheel	▲	1
22	Elastic washer, 6	▲	10
23	Screw, M6x20	▲	10
24	Seal ring, 148x165x12	+	1
25	Cover	+	1
26	Pin, B6x22	+	2
27	Screw, M6x16	+	11
28	Seal ring, 17x35x7	+	1
	Electromagnetic brake kit	MH2LEB886G	
29	Electromagnetic brake	▲	1
30	Screw, M5x45	▲	6
31	Cover	+	1
32	Retaining ring, 55	+	1
33	Screw, M10x1	+	1
34	Seal washer, 10	+	1
35	Fixxing plate for cable	+	1
36	Screw, M5x25	+	2
37	Screw, M5x10	+	2
38	Carbon brush for motor	MH2LEB887G	1

(▲) Available as part of a kit only.

(†) Not available.

For Repair Parts, call 1-800-323-0620

24 hours a day – 365 days a year

Please provide following information:

- Model number
- Serial number (if any)
- Part description and number as shown in parts list

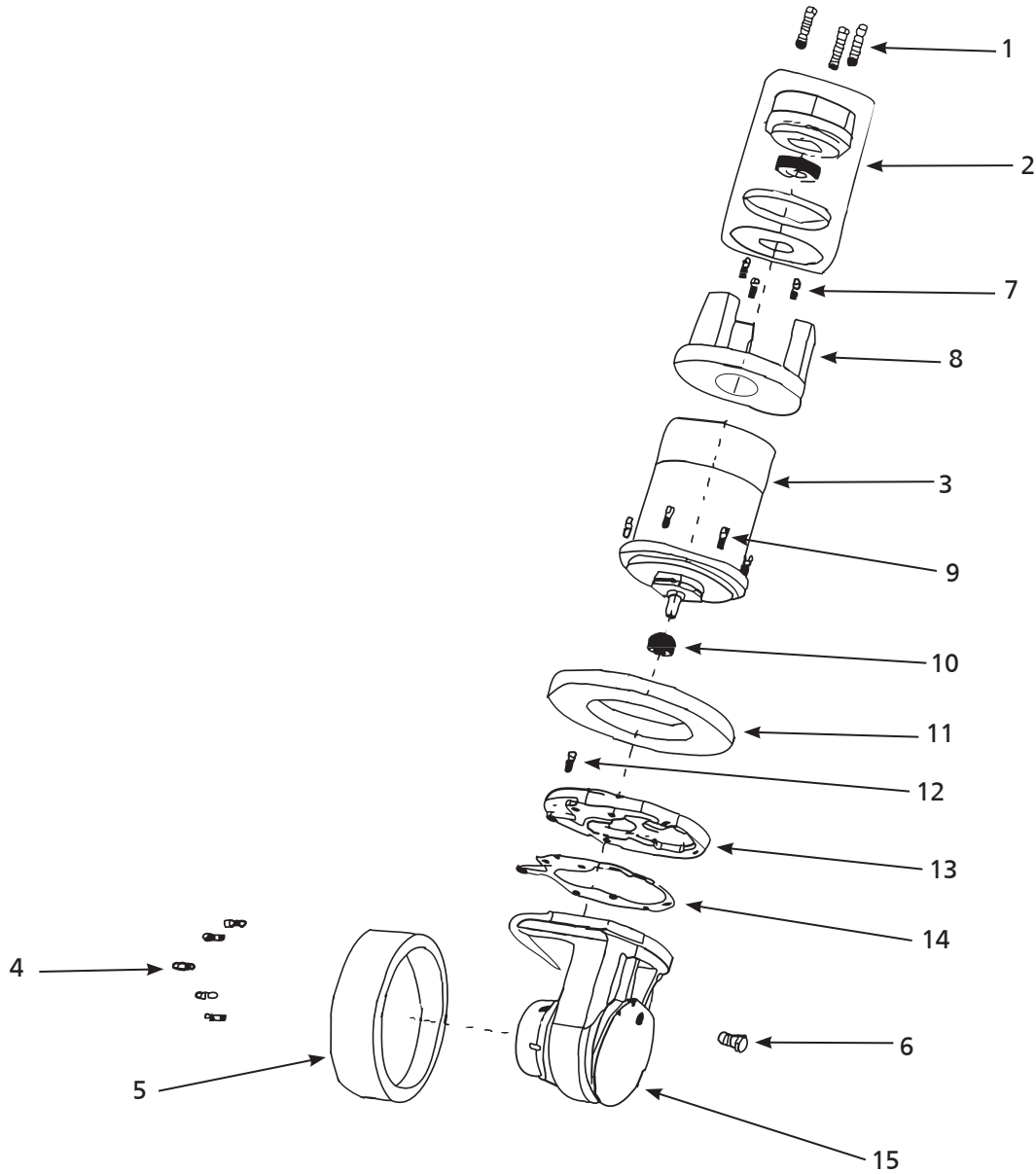


Figure 28 – Repair Parts Illustration for Pallet Truck Drive Wheel (Model 2LEB9A)

Repair Parts List for Pallet Truck Drive Wheel

Reference Number	Description	Part Number	Quantity
	Brake kit	MH2LEB929	
1	Bolt	▲	3
2	Brake	▲	1
3	Traction motor, DC24V	MH2LEB930	1
	Replacement wheel kit	MH2LEB931	
4	Bolt	▲	5
5	Wheel	▲	1
6	Bolt for adding oil	MH2LEB932	1
	Motor gear kit	MH2LEB933	
7	Bolt	▲	3
8	Tiller bar plate	▲	1
9	Bolt	▲	8
10	Gear	▲	1
11	Holding bearing	▲	1
12	Bolt	▲	4
13	Upper cover	▲	1
14	Seal washer	▲	1
15	Gear box	▲	1

(▲) Available as part of a kit only.

For Repair Parts, call 1-800-323-0620

24 hours a day – 365 days a year

Please provide following information:

- Model number
- Serial number (if any)
- Part description and number as shown in parts list

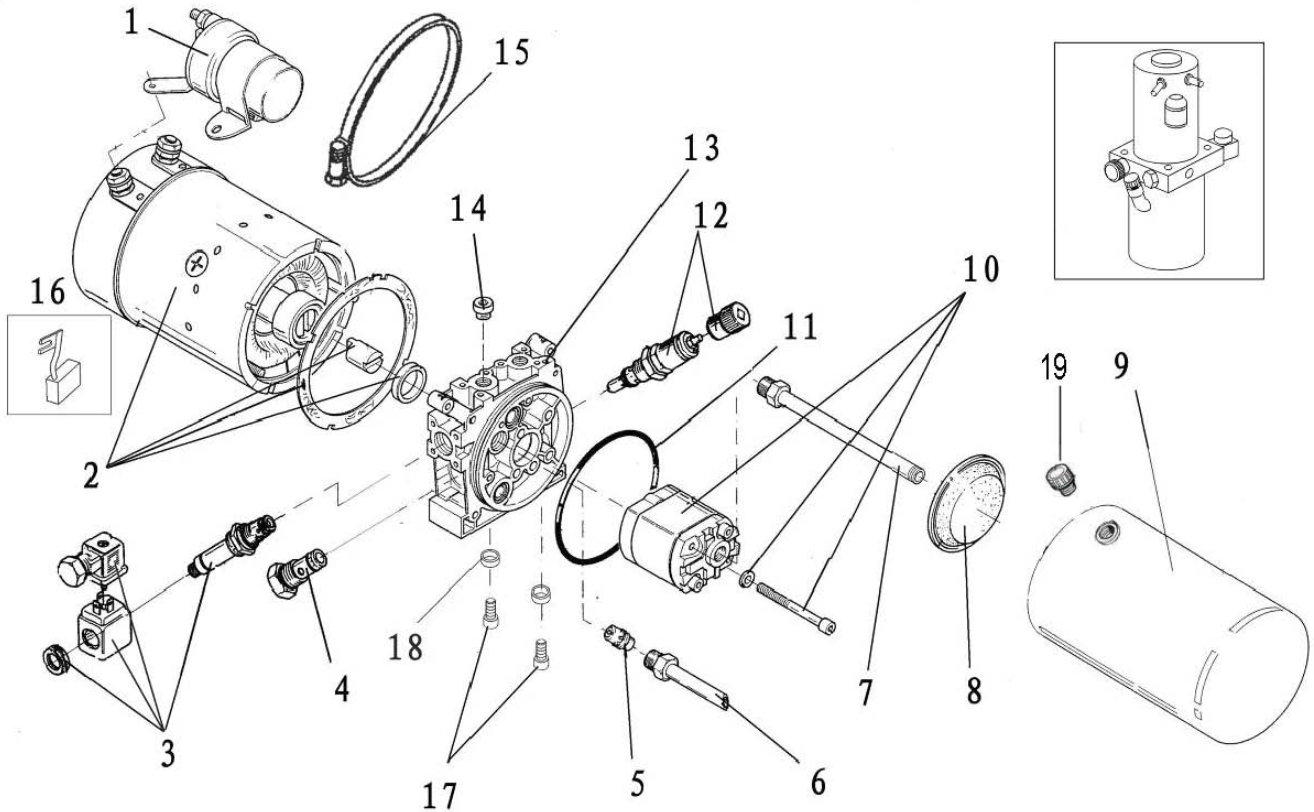


Figure 29 – Repair Parts Illustration for Pallet Truck Hydraulic Pump (Model 2LEB8A)

Repair Parts List for Pallet Truck Hydraulic Pump

Reference Number	Description	Part Number	Quantity
1	Lifting contactor	MH2LEB874G	1
2	Pump motor	MH2LEB873G	1
3	Electromagnetic valve	MH2LEB875G	1
4	Check valve	+	1
5	Flow control valve	+	1
6	Oil return pipe	+	1
7	Oil suction pipe	+	1
8	Filter	+	1
9	Oil tank	+	1
10	Gear pump	+	1
11	O - ring	+	1
12	Overflow valve	+	1
13	Valve plate	+	1
14	Screw	+	1
15	Hoop	+	1
16	Carbon brush kit	+	1
17	Screw, M10x25	+	2
18	Washer, 20x10.5x10	+	2
19	Tank cap	+	1

(†) Not available.

For Repair Parts, call 1-800-323-0620

24 hours a day – 365 days a year

Please provide following information:

- Model number
- Serial number (if any)
- Part description and number as shown in parts list

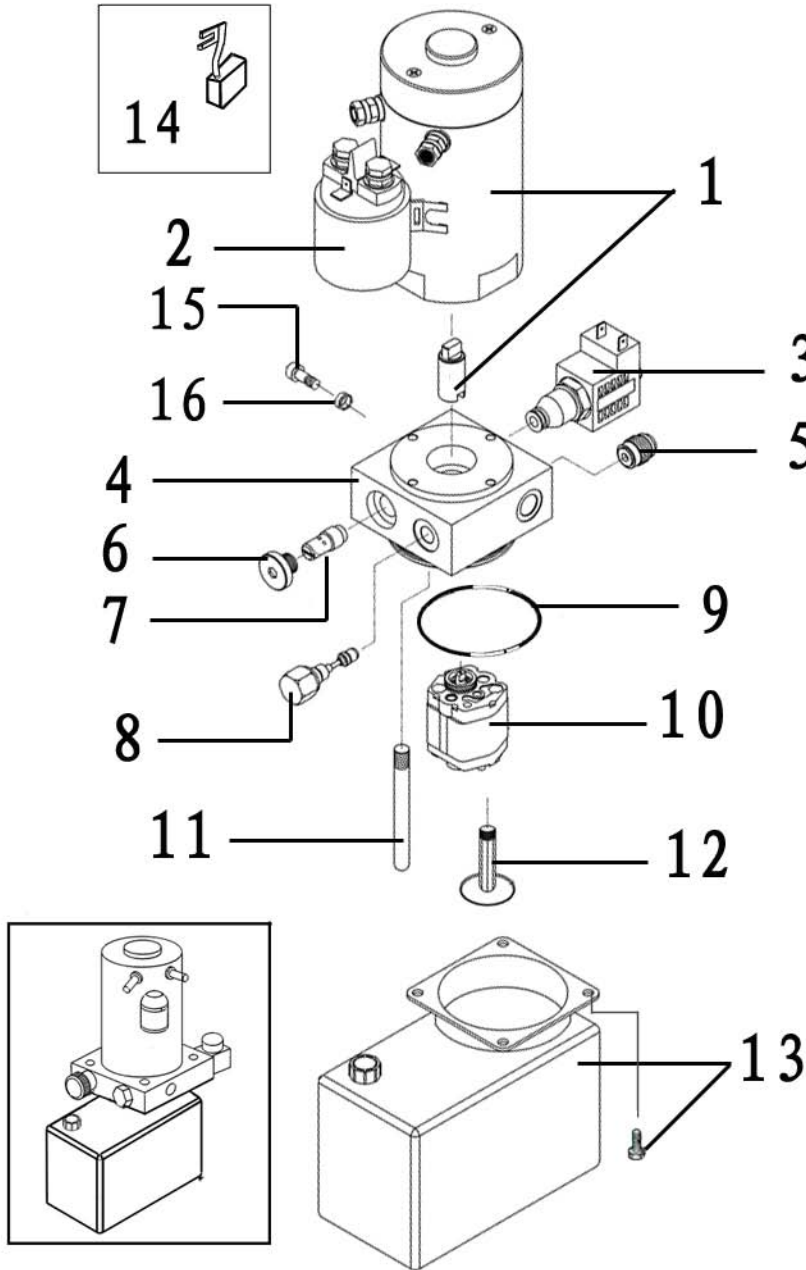


Figure 30 – Repair Parts Illustration for Pallet Truck Hydraulic Pump (Model 2LEB9A)

Repair Parts List for Pallet Truck Hydraulic Pump

Reference Number	Description	Part Number	Quantity
1	Pump motor	MH2LEB951G	1
2	Lifting contactor	MH2LEB952G	1
3	Electromagnetic valve	MH2LEB953G	1
4	Valve plate	+	1
5	Check valve	+	1
6	Screw	+	1
7	Flow control valve	+	1
8	Overflow valve	+	1
9	O - ring	+	1
10	Gear pump	+	1
11	Oil return pipe	+	1
12	Oil suction pipe kit	+	1
13	Oil tank kit	+	1
14	Carbon brush kit	+	1
15	Bolt M8x40	+	2
16	Washer	+	2

(+) Available as part of a kit only.

For Repair Parts, call 1-800-323-0620

24 hours a day – 365 days a year

Please provide following information:

- Model number
- Serial number (if any)
- Part description and number as shown in parts list

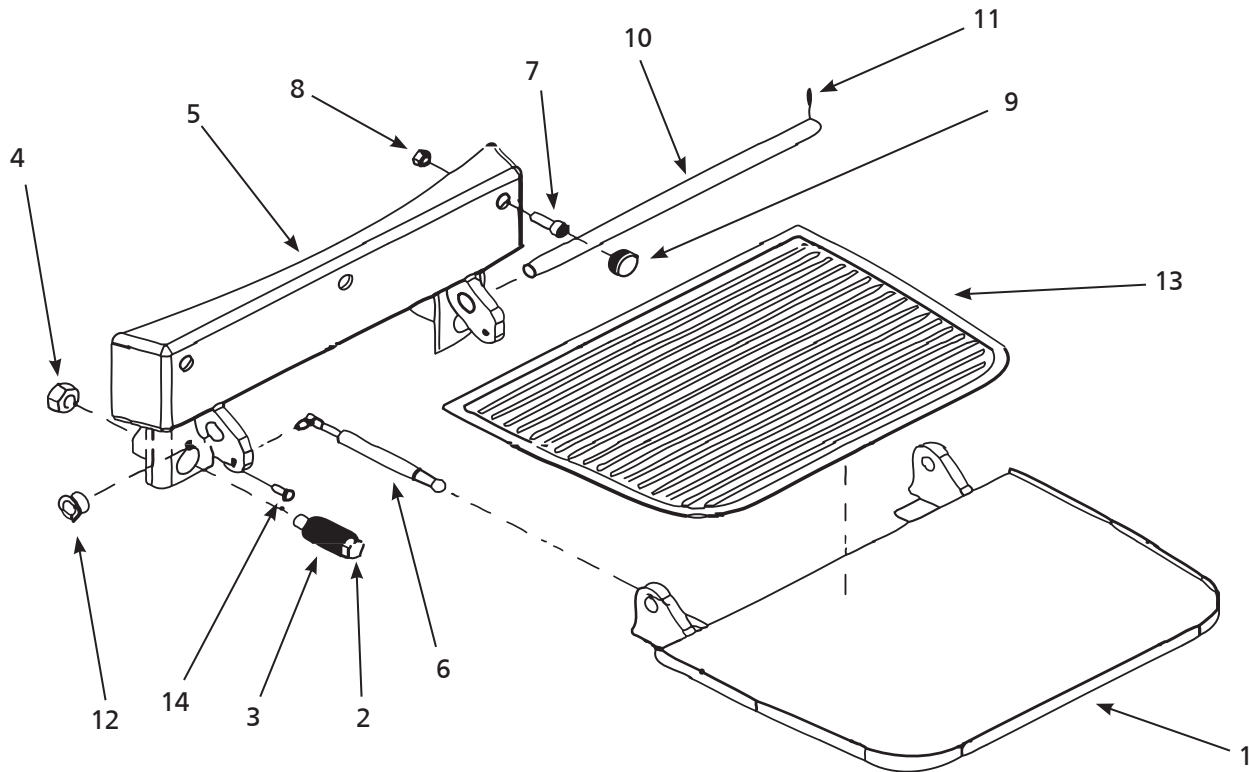


Figure 31 – Repair Parts Illustration for Pallet Truck Platform (Model 2LEB9A)

Repair Parts List for Pallet Truck Platform

Reference Number	Description	Part Number	Quantity
1	Platform body	MH2LEB934	1
	Spring kit	MH2LEB935	
2	Bolt	▲	1
3	Spring	▲	1
4	Locking nut	▲	1
5	Platform linkage	MH2LEB936	1
6	Air piston	MH2LEB937	1
	Platform connecting hardware kit	MH2LEB938	
7	Bolt	▲	3
8	Nut	▲	3
9	Anti-vibration pad	▲	3
	Platform pivot rod kit	MH2LEB939	
10	Platform pivot rod	▲	1
11	Roll pin	▲	1
12	Bushing	▲	2
13	Rubber pad	MH2LEB940	1
14	Bolt	†	

(▲) Available as part of a kit only.

(†) Not available.

Models 2LEB8A and 2LEB9A

Troubleshooting Chart

Symptom	Possible Cause(s)	Corrective Action
Truck doesn't move	<ol style="list-style-type: none"> 1. Battery is disconnected 2. Key switch is at "0" position 3. Emergency parking switch is on 4. Battery level is low 5. Control handle is not within driving range 6. Blown fuse 	<ol style="list-style-type: none"> 1. Check battery connection and reconnect if necessary 2. Turn key switch to "1" position 3. Release the emergency parking switch 4. Check the battery level and charge if necessary 5. Turn the control handle into driving range F 6. Check fuse FU and FU1; replace if necessary
Forks won't lift	<ol style="list-style-type: none"> 1. Hydraulic oil is low 2. Blown fuse 3. Battery level is below 20-30% 4. Poor connection or damage to lifting micro switch 	<ol style="list-style-type: none"> 1. Check hydraulic oil and add if needed 2. Check fuse FU2; replace if necessary 3. Charge the battery 4. Check the lifting micro switch and replace if necessary
Forks won't lower	<ol style="list-style-type: none"> 1. Control valve is blocked with dirty fluid 2. Lowering electromagnetic valve is off or damaged 	<ol style="list-style-type: none"> 1. Check hydraulic oil and clean control valve. Replace hydraulic oil if necessary 2. Check lowering electromagnetic valve and replace if needed
Forks won't stop lifting	Lifting micro switch is damaged	Turn off power and replace lifting micro switch
Poor directional control	Bad micro switch or connecting cable connection	Check micro switch on control handle and connecting cable
Travel is slow	<ol style="list-style-type: none"> 1. Low battery 2. Electromagnetic brake is too tight or poor cable connection 	<ol style="list-style-type: none"> 1. Check the battery level and charge if necessary 2. Check electromagnetic brake and related cables
Sudden startup of truck	<ol style="list-style-type: none"> 1. Controller damaged 2. Forward/backward button won't return to neutral position 	<ol style="list-style-type: none"> 1. Replace controller 2. Repair or replace the forward/backward button

DAYTON ONE-YEAR LIMITED WARRANTY

DAYTON ONE-YEAR LIMITED WARRANTY. All Dayton® product models covered in this manual are warranted by Dayton Electric Mfg. Co. (“Dayton”) to the original user against defects in workmanship or materials under normal use for one year after date of purchase. If the Dayton product is part of a set, only the portion that is defective is subject to this warranty. Any product or part which is determined to be defective in material or workmanship and returned to an authorized service location, as Dayton or Dayton’s designee designates, shipping costs prepaid, will be, as the exclusive remedy, repaired or replaced with a new or reconditioned product or part of equal utility or a full refund given, at Dayton’s or Dayton’s designee’s option, at no charge. For limited warranty claim procedures, see “Warranty Service” below. This warranty is void if there is evidence of misuse, mis-repair, mis-installation, abuse or alteration. This warranty does not cover normal wear and tear of Dayton products or portions of them, or products or portions of them which are consumable in normal use. This limited warranty gives purchasers specific legal rights, and you may also have other rights which vary from jurisdiction to jurisdiction.

WARRANTY DISCLAIMERS AND LIMITATIONS OF LIABILITY RELATING TO ALL CUSTOMERS FOR ALL PRODUCTS

LIMITATION OF LIABILITY. TO THE EXTENT ALLOWABLE UNDER APPLICABLE LAW, DAYTON’S LIABILITY FOR CONSEQUENTIAL AND INCIDENTAL DAMAGES IS EXPRESSLY DISCLAIMED. DAYTON’S LIABILITY IN ALL EVENTS IS LIMITED TO AND SHALL NOT EXCEED THE PURCHASE PRICE PAID.

WARRANTY DISCLAIMER. A DILIGENT EFFORT HAS BEEN MADE TO PROVIDE PRODUCT INFORMATION AND ILLUSTRATE THE PRODUCTS IN THIS LITERATURE ACCURATELY; HOWEVER, SUCH INFORMATION AND ILLUSTRATIONS ARE FOR THE SOLE PURPOSE OF IDENTIFICATION, AND DO NOT EXPRESS OR IMPLY A WARRANTY THAT THE PRODUCTS ARE MERCHANTABLE, OR FIT FOR A PARTICULAR PURPOSE, OR THAT THE PRODUCTS WILL NECESSARILY CONFORM TO THE ILLUSTRATIONS OR DESCRIPTIONS. EXCEPT AS PROVIDED BELOW, NO WARRANTY OR AFFIRMATION OF FACT, EXPRESSED OR IMPLIED, OTHER THAN AS STATED IN THE “LIMITED WARRANTY” ABOVE IS MADE OR AUTHORIZED BY DAYTON.

PRODUCT SUITABILITY. MANY JURISDICTIONS HAVE CODES AND REGULATIONS GOVERNING SALES, CONSTRUCTION, INSTALLATION, AND/OR USE OF PRODUCTS FOR CERTAIN PURPOSES, WHICH MAY VARY FROM THOSE IN NEIGHBORING AREAS. WHILE ATTEMPTS ARE MADE TO ASSURE THAT DAYTON PRODUCTS COMPLY WITH SUCH CODES, DAYTON CANNOT GUARANTEE COMPLIANCE, AND CANNOT BE RESPONSIBLE FOR HOW THE PRODUCT IS INSTALLED OR USED. BEFORE PURCHASE AND USE OF A PRODUCT, REVIEW THE SAFETY/SPECIFICATIONS, AND ALL APPLICABLE NATIONAL AND LOCAL CODES AND REGULATIONS, AND BE SURE THAT THE PRODUCT, INSTALLATION, AND USE WILL COMPLY WITH THEM.

CONSUMERS ONLY. CERTAIN ASPECTS OF DISCLAIMERS ARE NOT APPLICABLE TO CONSUMER PRODUCTS SOLD TO CONSUMERS; (A) SOME JURISDICTIONS DO NOT ALLOW THE EXCLUSION OR LIMITATION OF INCIDENTAL OR CONSEQUENTIAL DAMAGES, SO THE ABOVE LIMITATION OR EXCLUSION MAY NOT APPLY TO YOU; (B) ALSO, SOME JURISDICTIONS DO NOT ALLOW A LIMITATION ON HOW LONG AN IMPLIED WARRANTY LASTS, SO THE ABOVE LIMITATION MAY NOT APPLY TO YOU; AND (C) BY LAW, DURING THE PERIOD OF THIS LIMITED WARRANTY, ANY IMPLIED WARRANTIES OF MERCHANTABILITY OR FITNESS FOR A PARTICULAR PURPOSE APPLICABLE TO CONSUMER PRODUCTS PURCHASED BY CONSUMERS, MAY NOT BE EXCLUDED OR OTHERWISE DISCLAIMED.

THIS LIMITED WARRANTY ONLY APPLIES TO UNITED STATES PURCHASERS FOR DELIVERY IN THE UNITED STATES.

WARRANTY SERVICE

To obtain warranty service if you purchased the covered product directly from W.W. Grainger, Inc. (“Grainger”), (i) write or call or visit the local Grainger branch from which the product was purchased or another Grainger branch near you (see www.grainger.com for a listing of Grainger branches); or (ii) contact Grainger by going to www.grainger.com and clicking on the “Contact Us” link at the top of the page, then clicking on the “Email us” link; or (iii) call Customer Care (toll free) at 1-888-361-8649. To obtain warranty service if you purchased the covered product from another distributor or retailer, (i) go to www.grainger.com for Warranty Service; (ii) write or call or visit a Grainger branch near you; or (iii) call Customer Care (toll free) at 1-888-361-8649. In any case, you will need to provide, to the extent available, the purchase date, the original invoice number, the stock number, a description of the defect, and anything else specified in this Dayton One-Year Limited Warranty. You may be required to send the product in for inspection at your cost. You can follow up on the progress of inspections and corrections in the same ways. Title and risk of loss pass to buyer on delivery to common carrier, so if product was damaged in transit to you, file claim with carrier, not retailer, Grainger or Dayton. For warranty information for purchasers and/or delivery outside the United States, please use the following applicable contact information:

Dayton Electric Mfg. Co.,

100 Grainger Parkway, Lake Forest, IL 60045 U.S.A.

or call +1-888-361-8649