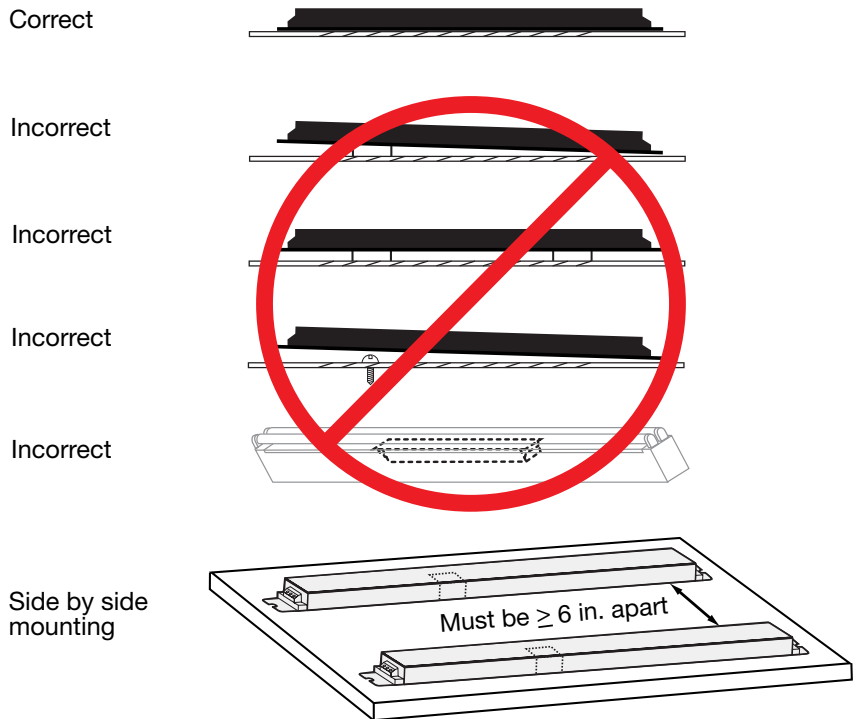


Linear Ballast Installation Best Practices Guide



Ballast Mounting

Mount ballast flush against fixture to provide best heat transfer. Also, avoid mounting ballast close to heat source such as fixture cover plate.

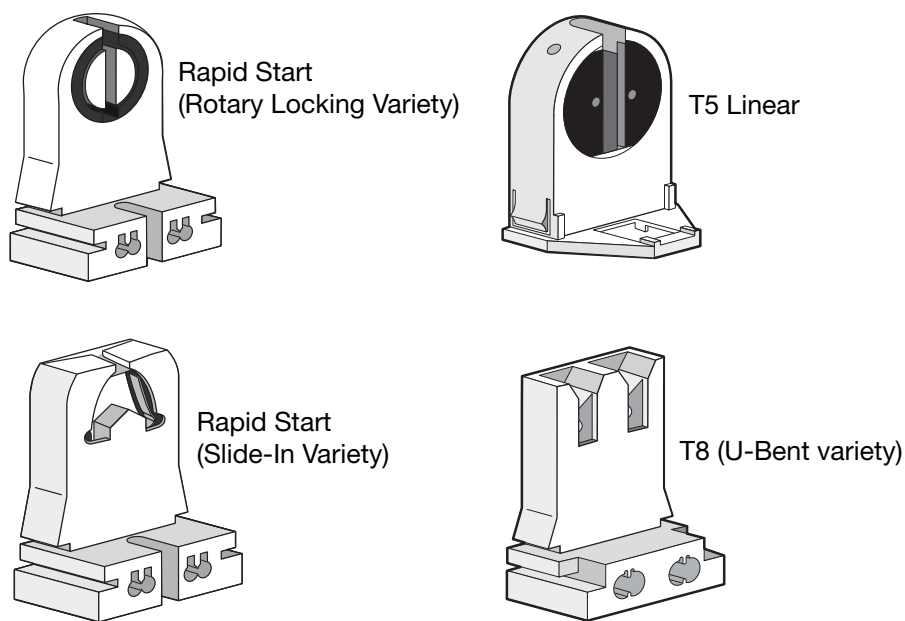


Ballast must be electrically grounded for proper performance and to meet UL & NEC requirements. Grounding should be accomplished with the connection of the mounting screw to the ballast enclosure. Painted models may need a star washer to ensure electrical connection.

WARNING: To avoid electric shock, ballast must be properly grounded.

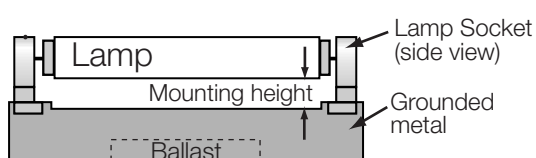
Sockets Lutron recommends sockets rated for IEC Spec Note #60400. Use Rapid Start sockets: Do not use Instant Start sockets. See Lutron App Note #122.

Lamp Type	Recommended Socket
T8 Linear	Rapid-start rotary locking or slide-in
T5 Linear	Rapid-start rotary locking



Lamp Mounting Height Requirements:

Lamp Type	Hi-lume 1%	Eco-10 10%
T8 Linear	1/8 in. to 3/4 in. (3.2 mm to 19.1 mm)	1/32 in. to 3/4 in. (.8 mm to 19.1 mm)
T5 Linear	1/8 in. to 1/2 in. (3.2 mm to 12.7 mm)	1/16 in. to 1/2 in. (1.6 mm to 12.7 mm)



IMPORTANT: Lamps must never touch ground plane.

Ballast Wiring

WARNING: To avoid electric shock or damage to ballast, turn off power to ballast before servicing or installing.

Socket Wiring:
Refer to socket manufacturer for proper strip length.

Socket Lead Length Requirements:

Lamp Type	Max. Length of Leads (ballast to socket)
T5 Linear	7 ft. (2.1 m)
T8 Linear	
T8 U-Bend	

Ballast Wire strip length:

For power and output connections



Use # 18 AWG Solid or Tinned Stranded Wire

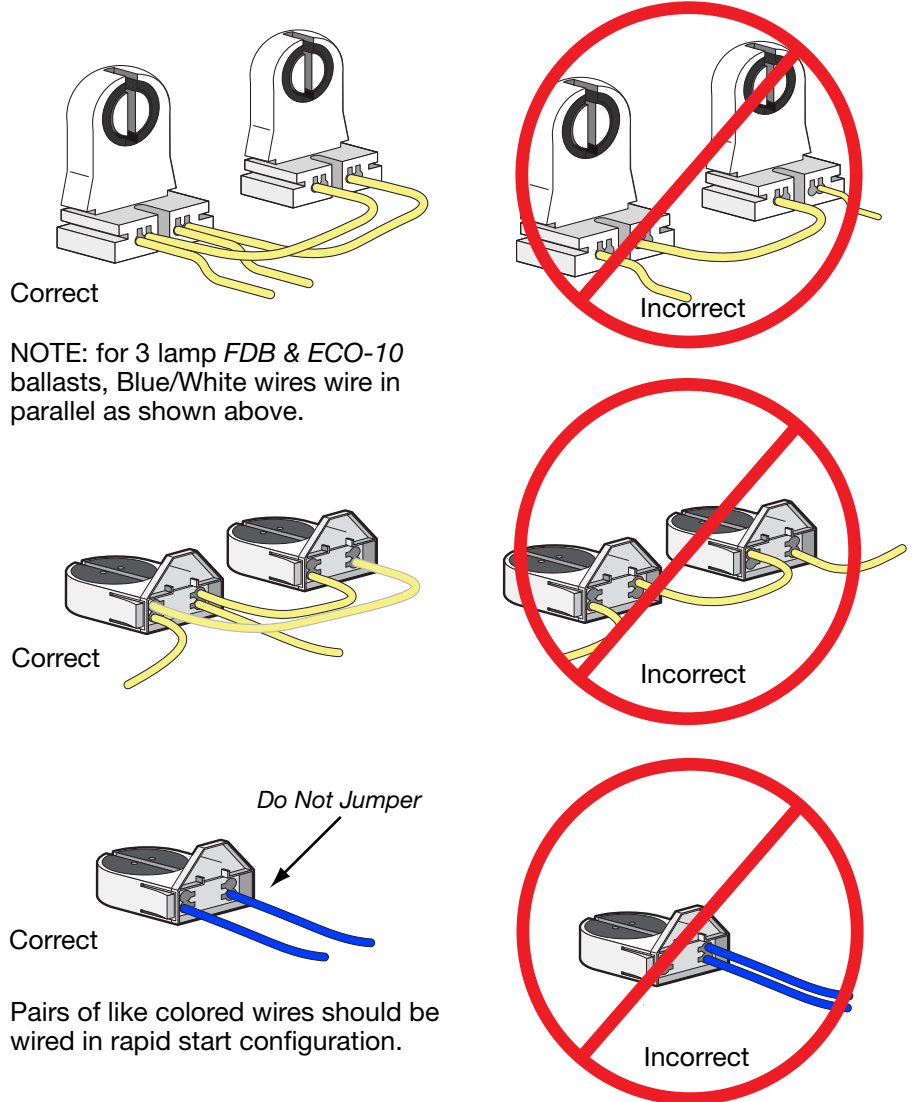
For proper wiring:

Follow wiring schematic on ballast. NOTE: 3 lamp ballasts are not all wired the same.



Yellow Socket Leads in parallel:

Make sure yellows socket leads are wired in parallel, not in series.



Lamps

Temperature:

Avoid installing with cold air blowing directly on lamps. Lutron ballasts are designed to operate the lamps when the lamp temperature is at a minimum of 50 °F (10 °C). See lamp manufacturer's specifications for maximum lamp temperature.

Lutron Technical Support Hotline 1-800-523-9466 www.lutron.com

Patent Information:

These products may be covered under one or more of the following U.S. patents: 5,001,386; 5,041,763; 6,982,528; 7,208,887; and corresponding foreign patents. Other U.S. and foreign patents may be pending.

Lutron and the Sunburst logo are registered trademarks of Lutron Electronics Co., Inc.

P/N: 041-146 Rev. A 01/08