

## Industrial Grade Manual Motor Controllers “Suitable as Motor Disconnect”

### 30A and 40A Motor Starter Switches for Single Phase and Three Phase Applications

Leviton's line of industrial grade AC Manual Motor Controllers provide safe, reliable control of a variety of motor loads. Typical applications include manual ON/OFF switching control of bottling lines, pumping machines, air compressors and other heavy manufacturing equipment. These Motor Controllers are available for both single-phase and three-phase applications, with a continuous current rating at all voltages up to 600V AC and maximum horsepower ratings of 20HP.

In addition, they are listed UL 508 “Suitable as Motor Disconnect”. This also provides for lowering facility costs (when compared to installation of UL98 Disconnect Switches).

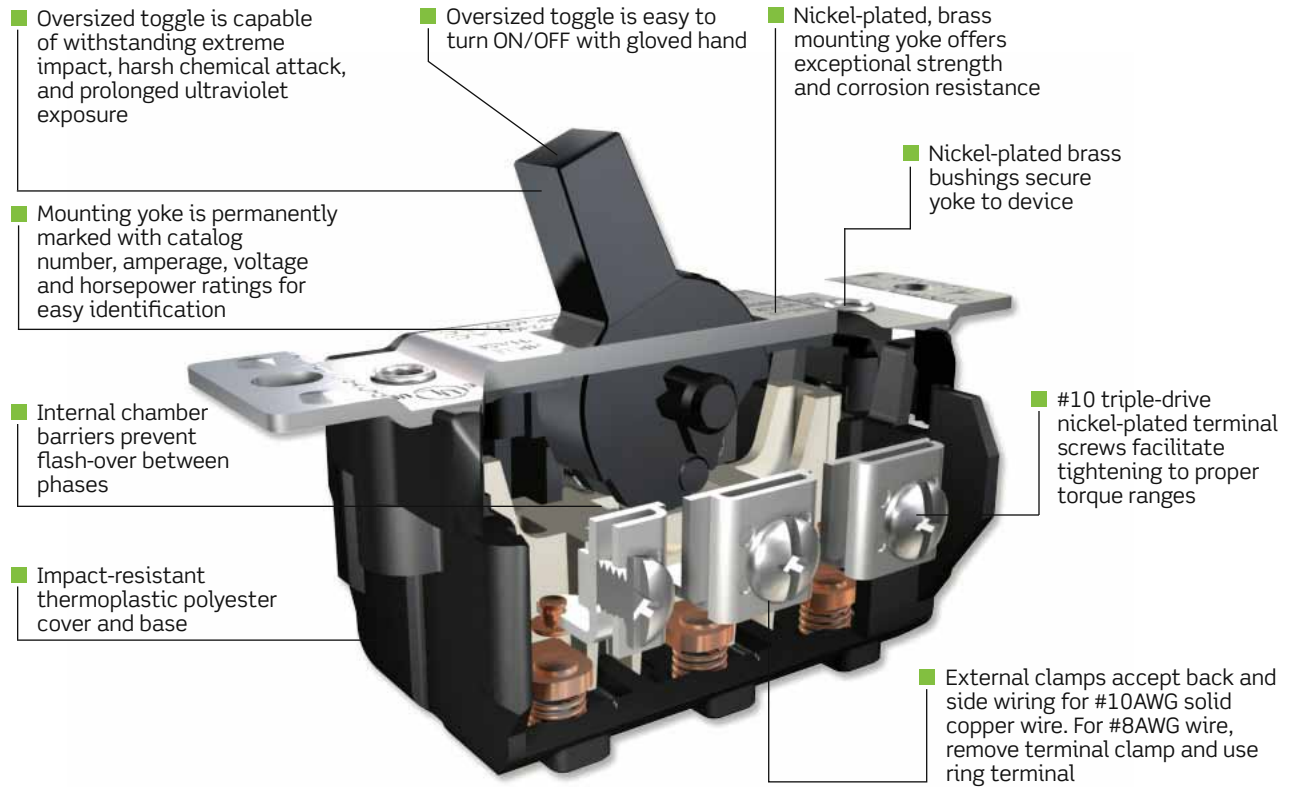


#### Features include:

- All molded parts are thermoplastic to resist impact, chemicals, temperature, tracking and arcing
- Cam-driven mechanism enhances fast-make/slow-break
- Silver- Alloy contacts for maximum conductivity and service life
- External clamps accept back and side wiring
- Insulating barrier between terminals provide isolation between phases
- Nickel-plated brass mounting yoke for superior strength and corrosion resistance
- Oversized toggle provides positive actuation, even with gloved hand
- Backed by a Limited Ten-Year Warranty

Leviton Manual Motor Controllers are available as either single switches or with enclosures. Available enclosures include Type 1 Thermoplastic, Type 1 Powder-Coated Metal, or Type 3R Powder-Coated Metal.

## AC Manual Motor Controller Features



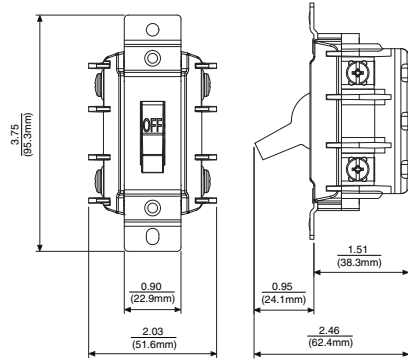
## Specifications

Electrical Specifications		Mechanical Specifications	
Dielectric Voltage-Withstand	2200V AC for 1 minute	Terminal Identification	T1, T2, T3, L1, L2 & L3 marked on back of device
Overload	50 cycles at 6 times full rated current	Terminal Accommodation	#10 AWG, #8 AWG (with ring terminal)
Temperature Rise	50°C maximum at full rated current	Product Identification	Ratings are permanently stamped on device strap
Endurance	6000 cycles of inductive motor type load	Torque	20 inch-pounds
Short Circuit Rating (Motor Disconnect)	10,000 RMS symmetrical amps at 600V AC max. when protected by a 30 A time delay fuse	Environmental Specifications	
Material Specifications		Flammability	UL94 V-0
Mounting Yoke	Nickel-Plated Brass	Operating Temperature	-40°C to 60°C
Base	Thermoplastic Polyester	Standards Specifications	
Cover	Thermoplastic Polyester	NEMA	WD1 & WD6
Toggle	Thermoplastic Polyester	ANSI	C-73
Contacts	Silver-Alloy	cULus per UL 508, CSA C22.2 No. 14	File #E63969
Terminal Screws	Nickel-Plated Brass	NOM	057
Assembly	Nickel-Plated Brass Bushings		

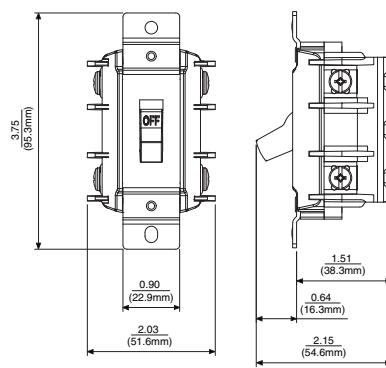
**10 YEAR LIMITED  
WARRANTY**

## Dimensions

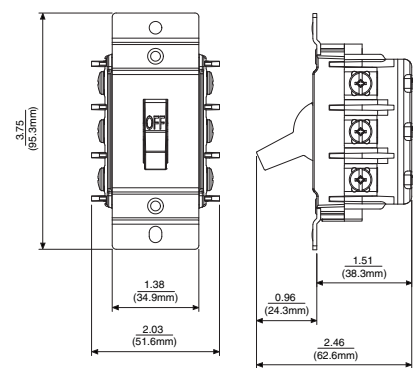
Cat. No. MS302-DS  
(dimensions are same for MS303-DS)



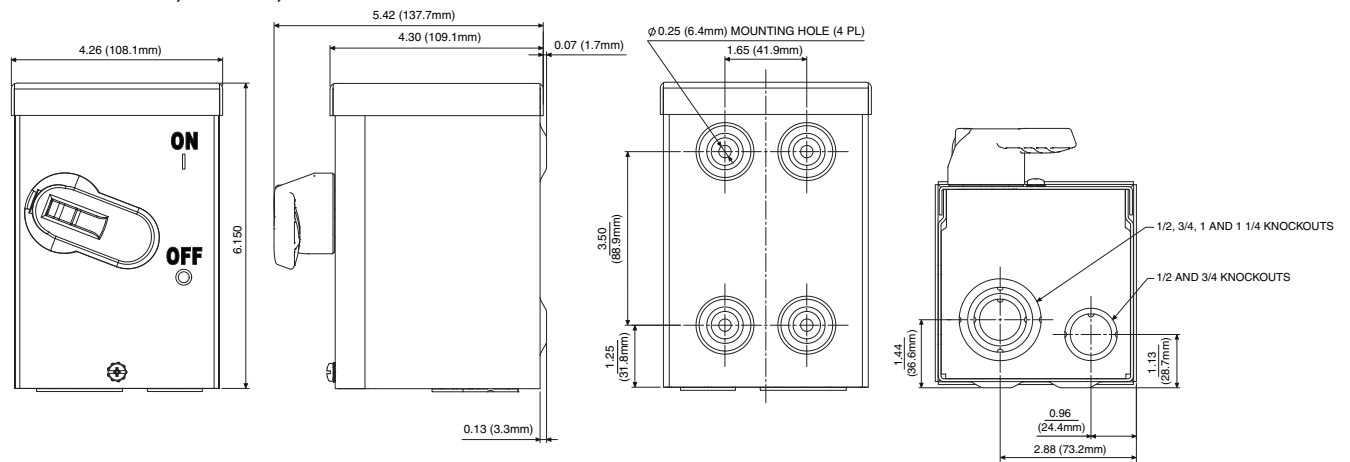
Cat. No. MS302-DSS  
(dimensions are same for MS303-DSS)



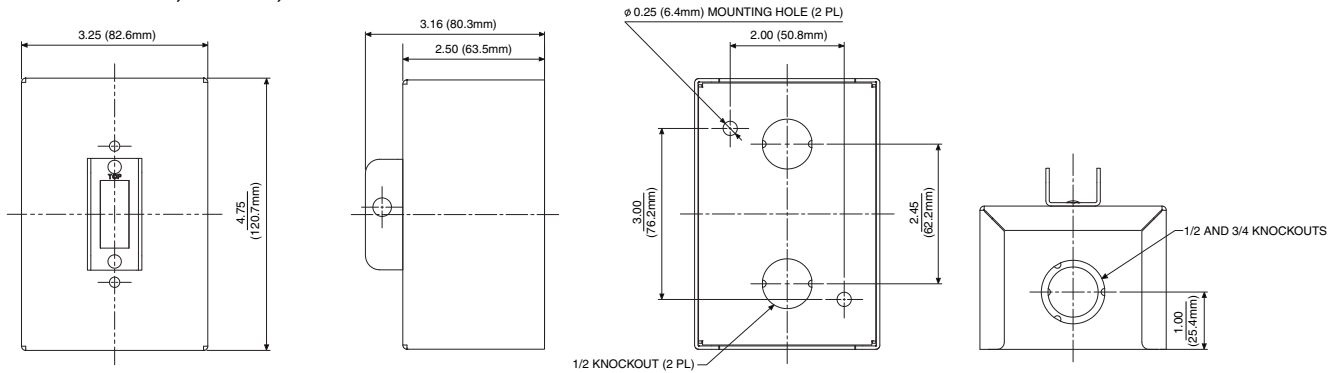
Cat. No. MS403-DS  
(dimensions are same for MS402-DS)



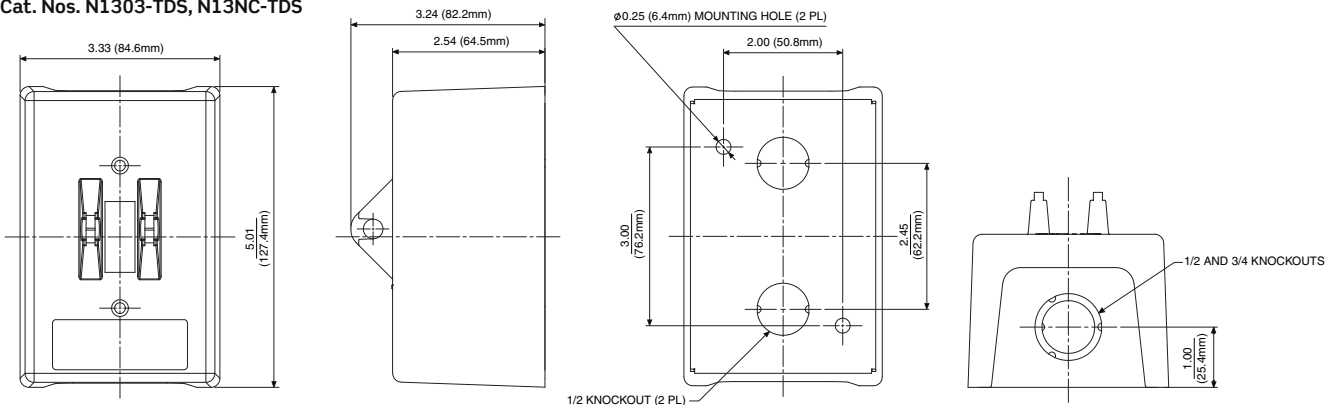
Cat. Nos. N3302-DS, N3303-DS, N33NC-DS



Cat. Nos. N1302-DS, N1303-DS, N13NC-DS



Cat. Nos. N1303-TDS, N13NC-TDS



## Ordering Information

Cat. No.	Description	AC Horsepower Rating (HP)			
		120V	240V	480V	600V
MS302-DS	30 AMP, 600V AC, 2-Pole, 1Ø, Standard Toggle	2	5	10	15
MS302-DSS	30 AMP, 600V AC, 2-Pole, 1Ø, Short Toggle	2	5	10	15
MS303-DS	30 AMP, 600V AC, 3-Pole, 3Ø, Standard Toggle	3	7 ½	15	20
MS303-DSS	30 AMP, 600V AC, 3-Pole, 3Ø, Short Toggle	3	7 ½	15	20
MS402-DS	40 AMP, 600V AC, 2-Pole, 1Ø, Standard Toggle	2	5	10	15
MS403-DS	40 AMP, 600V AC, 3-Pole, 3Ø, Standard Toggle	3	7 ½	15	20
N1302-DS	Type 1 Metal Enclosure with MS302-DS Switch	2	5	10	15
N1303-DS	Type 1 Metal Enclosure with MS303-DS Switch	3	7 ½	15	20
N1303-TDS	Type 1 Enclosure with Thermoplastic Cover and MS303-DS Switch	3	7 ½	15	20
N3302-DS	Type 3R Metal Enclosure with MS302-DS Switch	2	5	10	15
N3303-DS	Type 3R Metal Enclosure with MS303-DS Switch	3	7 ½	15	20
N13NC-DS	Type 1 Metal Enclosure Only (Use only with 30A Motor Starter Switches listed above)	See switch ratings above			
N13NC-TDS	Type 1 Thermoplastic Enclosure Only (Use only with 30A Motor Starter Switches listed above)	See switch ratings above			
N33NC-DS	Type 3 Metal Enclosure Only (Use only with 30A or 40A Motor Starter Switches listed above)	See switch ratings above			

### Leviton Manufacturing Co., Inc.

201 North Service Road, Melville, NY 11747

Telephone: 1-800-323-8920 • Fax: 1-800-832-9538 • Tech Line (8:30AM-7:00PM E.S.T. Monday-Friday): 1-800-824-3005

### Leviton Manufacturing of Canada, Ltd.

165 Hymus Boulevard, Pointe Claire, Quebec H9R 1E9

Telephone: 1-800-469-7890 • Fax: 1-800-563-1853

### Leviton S. de R.L. de C.V.

Lago Tana 43, Mexico DF, Mexico CP 11290

Telephone: (+52) 55-5082-1040 • Fax: (+52) 55-5386-1797 • [www.leviton.com.mx](http://www.leviton.com.mx)

### Leviton Manufacturing of Dubai, Ltd.

J/Ali Free Zone, View 19 7th Floor, Office 701 • PO Box 262742 Dubai, UAE

Telephone: +971 4 886 4722 • Fax: +971 4 886 4723

**Visit our Website at: [www.leviton.com](http://www.leviton.com) email: [industrial@leviton.com](mailto:industrial@leviton.com)**

© 2011 Leviton Manufacturing Co., Inc. All rights reserved.



Q-313C