

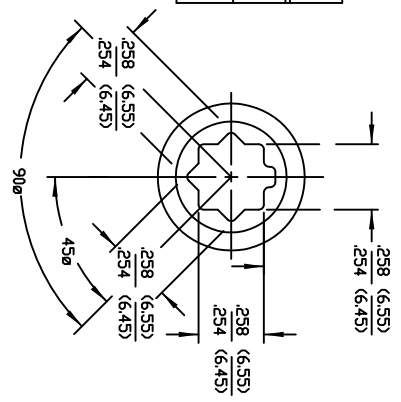
MOTOR SPECIFICATIONS

| MODEL | VOLT | RPM | IN.OZ | AMP | GRAINGER |
|------------------|------|-----|-------|-----|----------|
| CTX-2480-2-24VG | 24 | 85 | 44 | .30 | 20UG98 |
| CTX-24130-3-24VG | 24 | 138 | 30 | .30 | 20UG99 |

TOLERANCES ON DIMENSIONS UNLESS OTHERWISE SPECIFIED- ENGLISH: .XXX +.005 XX +.015 ANGLES: +0 -30° METRIC: XX +0.13 X +0.38 ANGLES: +0 -30°

MOLDEN PART NO. CTX-GRAINGER-SPECS A
 DESCRIPTION: SPEC SHEET # PK-10484-CTX

| | | | |
|--------------------|----------------|-------------------|---------|
| CUSTOMER: GRAINGER | | MAF: PROPOSAL OR# | |
| SCALE: — | DRAWN BY: SHAY | DATE: 5/31/13 | BY: CK |
| LET. E.C.N. | CHANGE | DATE: 1/17/14 | BY: SHA |
| A | RELEASE | | |



VIEW A-A
SCALE 2x

- NOTES:**
- PLASTIC GEARBOX: COLOR BLACK
 - PERMANENT GREASE LUBRICATION-FOOD GRADE
 - LIFE EXPECTANCY: 2K HOURS UNDER NORMAL CONDITIONS
 - TYPICAL APPLICATION: VENDING-LIGHT DUTY CYCLE
 - DO NOT STALL MOTOR
 - RADIAL LOAD NOT TO EXCEED 5 LBS

