



S Series: Single-Phase Industrial Vacuums



S2 and S3 Single-Phase Vacuums

Next generation of industrial vacuum cleaners

Construction: Heavy-duty, powder-coated steel and polypropylene. Stainless steel models are also available.

Filtration systems: Main pleated star filter available in standard polyester, polyester and polyurethane, PTFE membrane, Nomex® and antistatic polyester. Oversized versions of select filters are also available.

Collection options: For safe collection and easy disposal, the S2 and S3 are available with a dust bag, safe bag, or Longopac®, which allows the collection of material in a continuous bag that can be filled, then cut, disposed and immediately restored for a new use.

Features and benefits:

- Manual filter shaker to quickly clean the main filter
- Wide handle for easy push/pull transport
- Accessory storage tray and cable holder
- Liquid and Solid Level LED sensors (100 L machines only) that automatically shut off the machine when maximum capacity is reached

Features Gallery





Technical Features	S2N1		S2N6	
Collection Type	Dry		Dry	
Voltage @ 60 Hz	120 V		120 V	
Type of Power	1-phase		1-phase	
Power @ 60 Hz	2.68 HP (2000 W)		2.15 HP (1600 W)	
Current, max.	14.5 amps		11.5 amps	
Airflow, max.	198 CFM (5607 L/min)		180 CFM (5097 L/min)	
Waterlift, max.	83.1 in. H ₂ O (2111 mm H ₂ O)		71.5 in. H ₂ O (1816 mm H ₂ O)	
Container Capacity	13 gal. (50 L)	26 gal. (100 L)	13 gal. (50 L)	26 gal. (100 L)
Main Filter Area, standard	20.99 ft. ² (1.95 m ²)		20.99 ft. ² (1.95 m ²)	
Main Filter Area, oversized	31.22 ft. ² (2.9 m ²)		31.22 ft. ² (2.9 m ²)	
HEPA Filter Area, upstream	37.7 ft. ² (3.5 m ²)		37.7 ft. ² (3.5 m ²)	
HEPA Filter Efficiency	99.995% @ 0.18 microns		99.995% @ 0.18 microns	
Machine Inlet Diameter	70 mm		70 mm	
Dimensions (L x W x H)	31.5 in. x 23.6 in. x 51.2 in. (800 mm x 600 mm x 1300 mm)	31.5 in. x 23.6 in. x 62.2 in. (800 mm x 600 mm x 1580 mm)	31.5 in. x 23.6 in. x 51.2 in. (800 mm x 600 mm x 1300 mm)	31.5 in. x 23.6 in. x 62.2 in. (800 mm x 600 mm x 1580 mm)
Weight, machine only	139 lb. (63 kg)	140 lb. (63 kg)	139 lb. (63 kg)	140 lb. (63 kg)
Cord Length	30 ft. (10 m)		30 ft. (10 m)	
Protection Class	IP44		IP44	
Sound Pressure Level @ 3'3"	70 dB(A)		70 dB(A)	

Specifications subject to change without notice.

Endless Possibilities

Nilfisk CFM presents ...

The S2 and S3 single-phase industrial vacuums are designed to meet a wide range of industrial cleaning challenges. Available in a variety of configurations, they feature strong, solid construction and cutting-edge innovations, such as an electronic keypad with LED indicators to monitor filter performance.

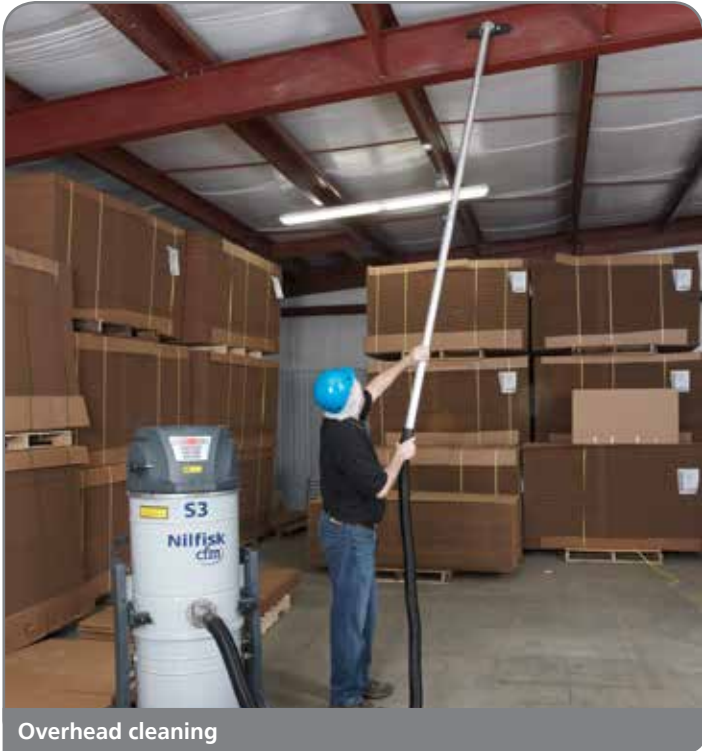
S series vacuums are extremely ergonomic with a modular design for easy modifications, upgrades and servicing. The S2 and S3 are certified for electrical safety by a Nationally Recognized Testing Laboratory.

They are equipped with multi-stage filtration, including an optional HEPA filter to capture 99.995% of particulate down to and including 0.18 microns.

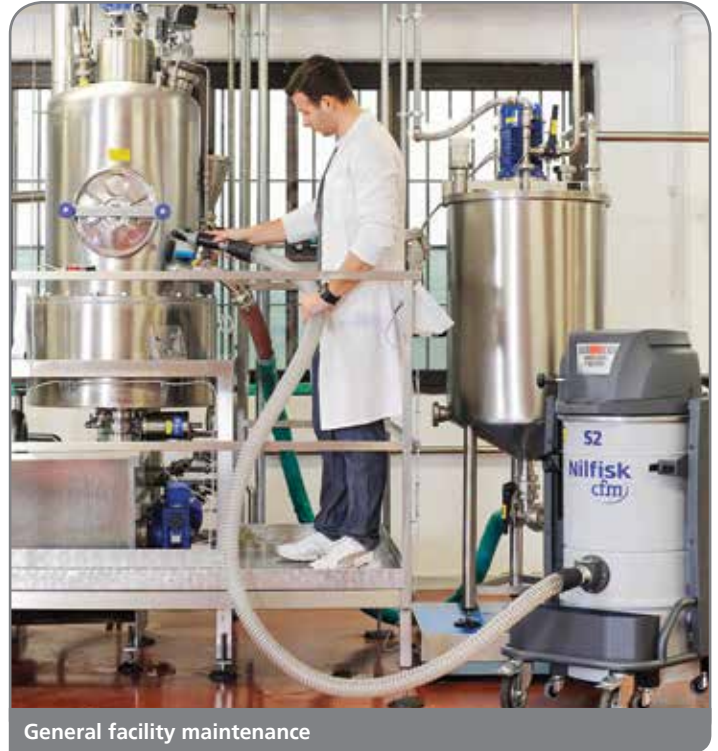
Industries:

- Bakeries
- Firing Ranges
- Food Processing & Packaging
- Metalworking
- Paper/Corrugated
- Powder Coating
- Printing
- Textiles
- Woodworking
- And many more

S3N1		S3N2	
Dry (Wet Option)		Dry (Wet Option)	
120 V		220 V	
1-phase		1-phase	
3.22 HP (2400 W)		4.02 HP (3000 W)	
15.8 amps		13 amps	
270 CFM (7646 L/min)		314 CFM (8891 L/min)	
71.5 in. H ₂ O (1816 mm H ₂ O)		90 in. H ₂ O (2286 mm H ₂ O)	
13 gal. (50 L)	26 gal. (100 L)	13 gal. (50 L)	26 gal. (100 L)
20.99 ft. ² (1.95 m ²)		20.99 ft. ² (1.95 m ²)	
31.22 ft. ² (2.9 m ²)		31.22 ft. ² (2.9 m ²)	
37.7 ft. ² (3.5 m ²)		37.7 ft. ² (3.5 m ²)	
99.995% @ 0.18 microns		99.995% @ 0.18 microns	
70 mm		70 mm	
31.5 in. x 23.6 in. x 51.2 in. (800 mm x 600 mm x 1300 mm)	31.5 in. x 23.6 in. x 62.2 in. (800 mm x 600 mm x 1580 mm)	31.5 in. x 23.6 in. x 51.2 in. (800 mm x 600 mm x 1300 mm)	31.5 in. x 23.6 in. x 62.2 in. (800 mm x 600 mm x 1580 mm)
150 lb. (68 kg)	157 lb. (71 kg)	150 lb. (68 kg)	157 lb. (71 kg)
30 ft. (10 m)		30 ft. (10 m)	
IP44		IP44	
71 dB(A)		71 dB(A)	



Overhead cleaning



General facility maintenance



Multiple operators

Safe Choice Commitment

At Nilfisk Industrial Vacuums we understand that you face many risks each day, just by operating your business. That is why Nilfisk is dedicated to helping you make smart choices to keep your facility and your workers safe. Our team of experts is ready to tackle any cleaning challenge – because in a world full of risk, you have to make safe choices.

We are committed to being that safe choice. To learn more visit nilfiskindustrialvacuums.com/SafeChoice.



Nilfisk-Advance, Inc.
Industrial Vacuum Division
740 Hemlock Rd., Suite 100
Morgantown, PA 19543
(800) 645-3475

www.nilfiskindustrialvacuums.com
questions@nilfisk.com