

NOR-LAKE[®] SCIENTIFIC

PREMIER ENZYME LABORATORY AND PHARMACY FREEZERS

Designed to meet the demanding requirements for scientific and laboratory research. Advanced engineered design incorporates the latest in cabinet, refrigeration, temperature control and monitoring features. Provides energy efficient, convenient, safe and reliable performance for optimal storage temperature environments necessary for a wide range of life science, pharmacy, biological, medical, clinical, and industrial applications.

Standard Product Features:

- Digital LED display microprocessor temperature controller
- Audible and visual Hi/Lo temperature alarm
- Adjustable control range from -10°C to -25°C factory preset at -20°C
- Remote alarm contacts
- Continuous product temperature display
- Product sensor with glycerin bottle
- Power supply switch
- Exterior cabinet front, sides and back are painted white
- Exterior cabinet top and bottom are galvanized steel
- Interior cabinet liner and interior door panel are smooth aluminum
- Cabinet and solid door are foamed-in-place with CFC Free high density polyurethane foam insulation
- Heavy duty solid door with spring loaded hinges
- Full length pull door handle
- Magnetic door gasket
- Centered key door lock, (2 keys)
- Four casters (2 locking)
- 9 coated wire shelves
- Perimeter anti-condensate door frame heater wires
- Power supply switch for manual defrost
- Air cooled condensing unit
- Top mounted refrigeration system
- Cold wall evaporator, manual defrost
- Warranties: 18 month parts and labor, 5 year compressor (US and Canada) 18 months parts (International)
- UL/CUL listed
- Tested to meet the Maximum Daily Energy Consumption Requirements (KWhr/day) as defined by the California Energy Commission Appliance Efficiency Regulations and the ENERGY STAR[®] Program Requirements for Commercial Refrigerators and Freezers.

Optional Features:

- Extra shelf
- Stainless steel drawer (8 maximum)
- Wire basket drawer (6 maximum)
- Sensor access port 1" diameter
- Legs in lieu of casters
- Stainless steel interior
- Stainless steel exterior
- Reverse door hinge
- Storage bins 23"x4"x4"
- Temperature chart recorder with chart paper
- 4-20ma output
- Export crating



(9) Shelves supplied with each unit.
Shelves are removable and adjustable.

NORLAKE SCIENTIFIC

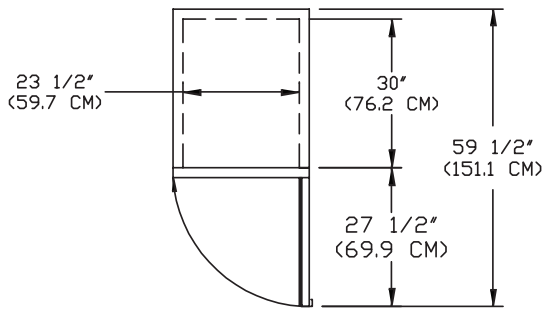


Committed to our environment

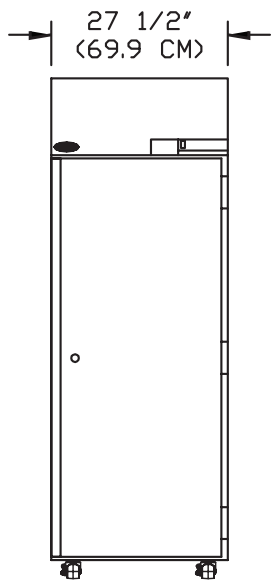


Nor-Lake, Inc.
Registered to ISO 9001:2008
File No. 10001816

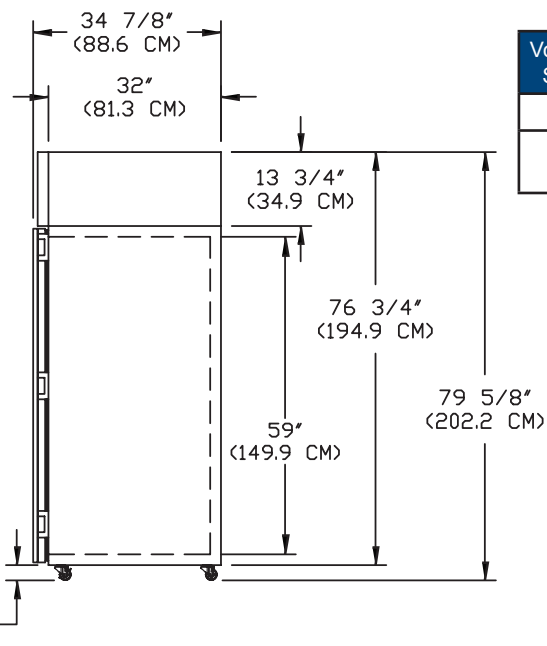
NOR-LAKE SCIENTIFIC
A Division of
NOR-LAKE, INCORPORATED
727 Second Street
P.O. Box 248
Hudson, Wisconsin 54016
800-477-5253
715-386-2323
800-388-5253 PARTS
715-386-4290 FAX
www.norlakescientific.com



TOP - NSF241WMW/_M



FRONT - NSF241WMW/_M



SIDE - NSF241WMW/_M

SPECIFICATIONS

Models	NSZF241WMW/0M	NSZF241WMW/5M
Crated Height (in) (cm)	83" (212)	83" (212)
Crated Width (in) (cm)	31-7/8" (94)	31-7/8" (94)
Crated Depth (in) (cm)	38-7/8" (104)	38-7/8" (104)
Crated Weight (lbs) (kg)	419 (190)	419 (190)
Interior Height (in) (cm)	59" (149)	59" (149)
Interior Width (in) (cm)	23-1/2" (59)	23-1/2" (59)
Interior Depth (in) (cm)	30" (76)	30" (76)
Overall Height* (in) (cm)	79-5/8" (202)	79-5/8" (202)
Overall Width (in) (cm)	27-1/2" (69)	27-1/2" (69)
Overall Depth (in) (cm)	34-7/8" (88)	34-7/8" (88)
Gross Cubage (ft.3) (m3)	24.0 (0.68)	24.0 (0.68)
Shelf Area (sq. ft) (m2)	40.2 (3.73)	40.2 (3.73)
Number of Shelves	9	9
Number of Casters	4	4
Condensing Unit Size	3/4 HP	3/4 HP
Refrigerant	R-404A	R-404A
Maximum Fuse Size	15 AMPS	15 AMPS
Cord & Plug Furnished	Yes	Yes
Total Amp Draw	8.2	3.9

Specifications subject to change without notice.

Voltage Model Suffix Code	Voltage Description	NEMA Plug	NEMA Receptacle
/0	115V, 1PH, 60HZ	5-15P	5-15R
/5	230V, 1PH, 50HZ	Power Inlet (IEC 60320) Module	Cord Supplied Locally

NORLAKE SCIENTIFIC

Revision Date: 9/09
 ©2009 NOR-LAKE, INC.
 Printed in the U.S.A.
 Part Number: 121173

