

# SPEAKMAN®

## SEF-1000

### EYESAVER®

### FAUCET

#### DEscription

the SEF-1000 Eyesaver® faucet model allows a customer to convert their existing Speakman widespread faucet into a Speakman SEF-1800 Eyesaver® faucet. The SEF-1800 combines a gooseneck faucet with an independently operated eyewash. Lead free brass construction.

#### SpEcificationS

**Operation:** Pull handle to operate the eyewash

**Supply:** Eyewash connection- 1/2" NPT male  
Faucet Gooseneck - inlets through the adapter tee have 3/8" male connections (SEF-1000 comes standard with 3/8" compression hoses to connect to Speakman widespread valves.

**Widespread Valves:** Not included

**Finish:** Chrome plated brass

**Eyewash Activation:** Pull handle with graphics

**Eyewash Sprays:** Aerated sprays

**Eyewash Flow Rate:** 2.4 GPM at 30 psi. flowing

**Counter Thickness:** Up to 2" thick

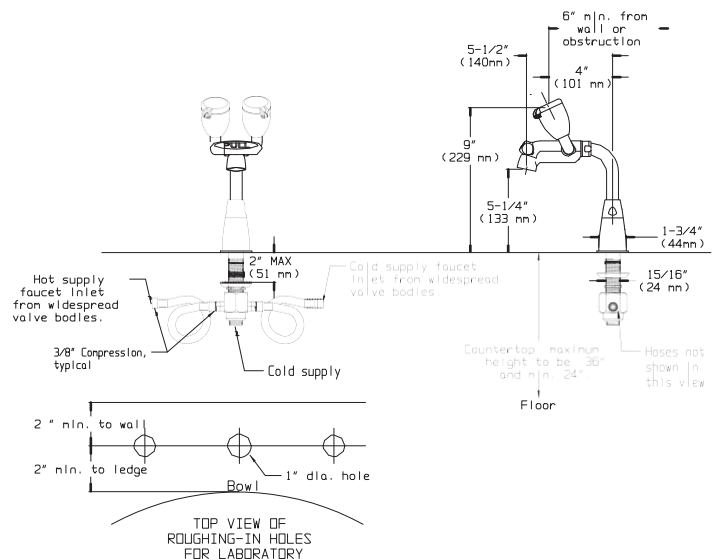
**Pressure:** 30 psi. minimum flow pressure, 125 psi. maximum static pressure

**Compatability:** Connects to any Speakman widespread faucet with flexible hose connections. Connects to any competitor widespread faucet that can connect to 3/8" compression fittings via flexible hose. (hardware not supplied)

**Approvals:** Meets ASME A112.18.1, ANSI Z358.1, CSA B125-98 and CA AB1953

**Vacuum Breaker (ST option):** Approved by ASSE, UPC and CSA. Meets the ANSI/ASSE 1035 standard for "Laboratory Faucet Vacuum Breakers", CSA B64.8 and UPC.

**Shipping Weight:** 10 LBS.



#### options

- BO Vandal-resistant 0.5 gpm flow control
- ST\* Serrated tip with vacuum breaker
- tW tepid water supply
- FP\* Foot pedal activation of faucet
- LF 2.2 gpm laminar flow control outlet
- 8 8" Gooseneck spread
- NA Non-aerated spray heads

Job _____	Name _____
Location _____	
Architect/Engineer _____	
Sales _____	Representative _____
Wholesaler _____	
Date _____	Model # _____

400 Anchor Mill Road, New Castle, DE 19720

\* Not available in Lead Free option USA 1-800-537-2107 | Fax: 1-800-977-2747