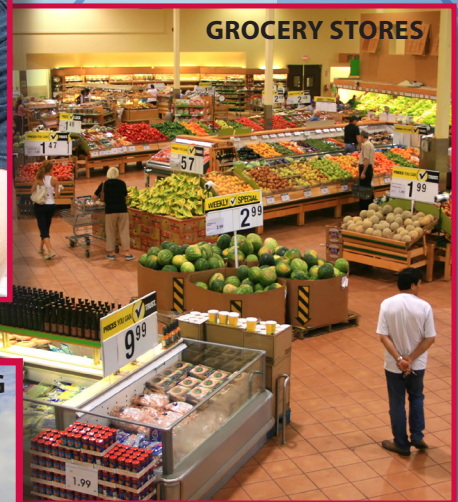
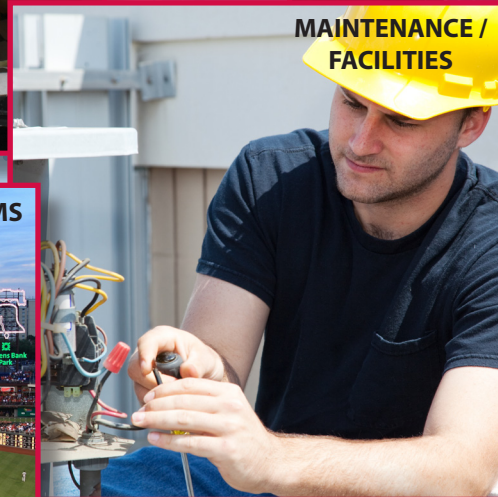


# Temp by... *Cooper* Trak™ ATKINS®

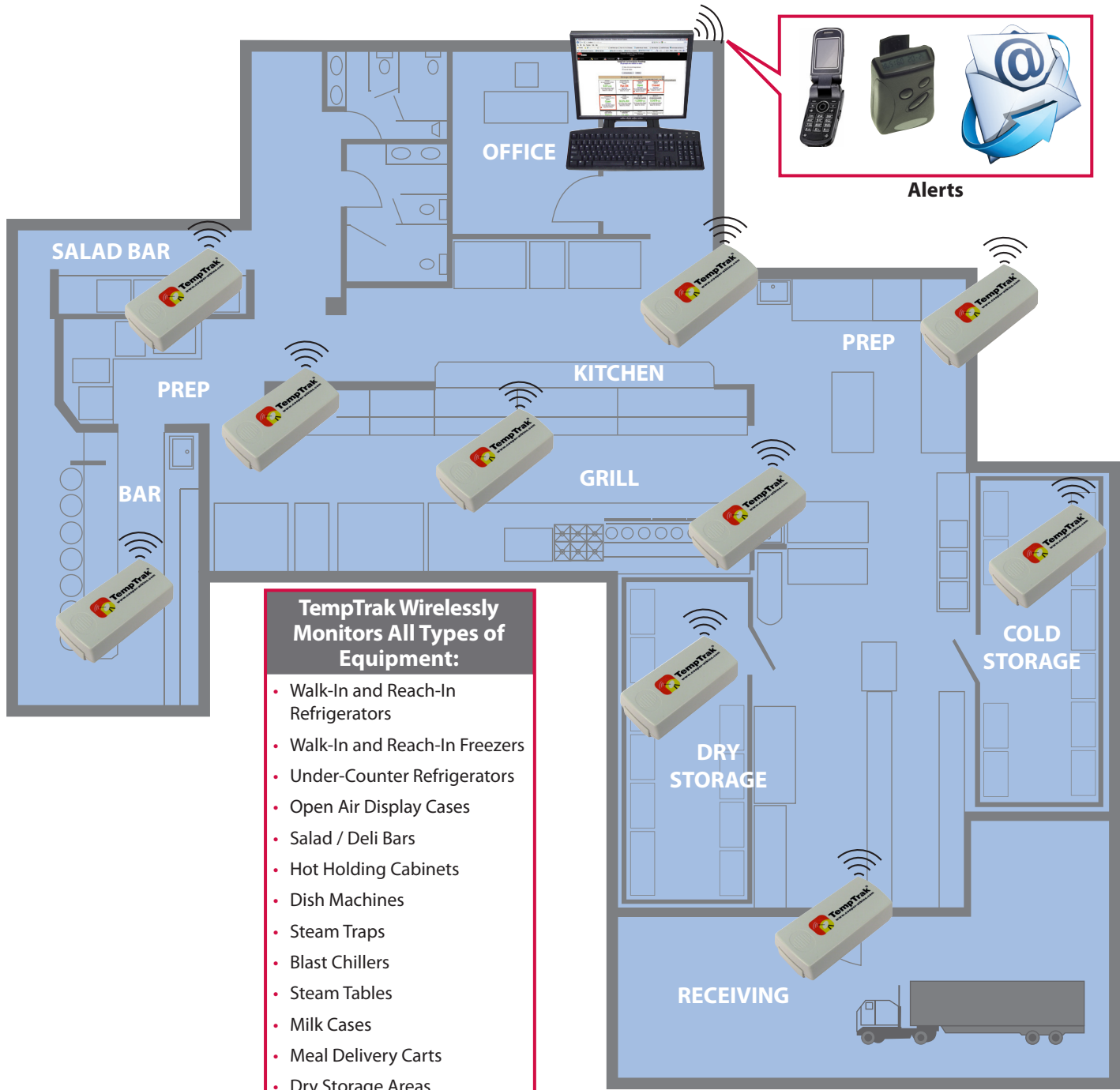


## Wireless Temperature Monitoring System

**TempTrak™** by Cooper-Atkins offers 24 / 7 remote temperature, humidity, door open / close and steam trap monitoring. **From -328° to 300°F**, this system allows a facility to monitor an **unlimited number of points in an unlimited number of buildings** with one piece of software! When looking for a proven wireless system, facilities turn to **TempTrak**, currently monitoring over 60,000 pieces of equipment in over 1,000 locations . . . worldwide!

The **TempTrak** system wirelessly transmits real-time data to an on-site or remote computer and **provides instantaneous alerts** and reports for trend analysis, historical data files and documentation of corrective actions.

**TempTrak** is primarily recognized for monitoring equipment storage temperatures. **TempTrak** eliminates the need for labor-intensive manual temperature monitoring and provides real-time, highly-accurate data.



# TempTrak Monitoring System

- MARKET SHARE LEADER IN WIRELESS TEMPERATURE MONITORING
- PROVEN RELIABILITY
- EXCEEDS REGULATORY REQUIREMENTS
- PREFERRED OVER ANY OTHER PROVIDER

## TempTrak Transmitters (Sensors):

- Battery powered
- Requires no hard-wired connectivity
- Easy to mount in any location
- Transmit information wirelessly to the TempTrak software
- Collects and records data 24 / 7

The TempTrak software is installed on your server, or hosted on ours, and secured with all other critical data. If the server is unavailable, the TempTrak system can operate in a fallback "batch" mode where the transmitter data is temporarily saved in a "buffer" at the base receiver. Each transmitter monitors against preset conditions and if a temperature falls out of range TempTrak will alert you with a number of sensor notification alerts.

TempTrak software creates a variety of reports on all information collected through-out the system and provides documentation of corrective actions.

All communications between the transmitters and the base receiver are via a 900 MHz, frequency-looping network. All hardware can co-exist with other wireless communication operating on the same, or nearby, frequency bands.

Transmitter information recorded by the database is time-stamped and cannot be altered through user interface. Temperature data can be displayed in either °F or °C.

Cooper  
**ATKINS**

## SYSTEM LOGIN

Site Code:

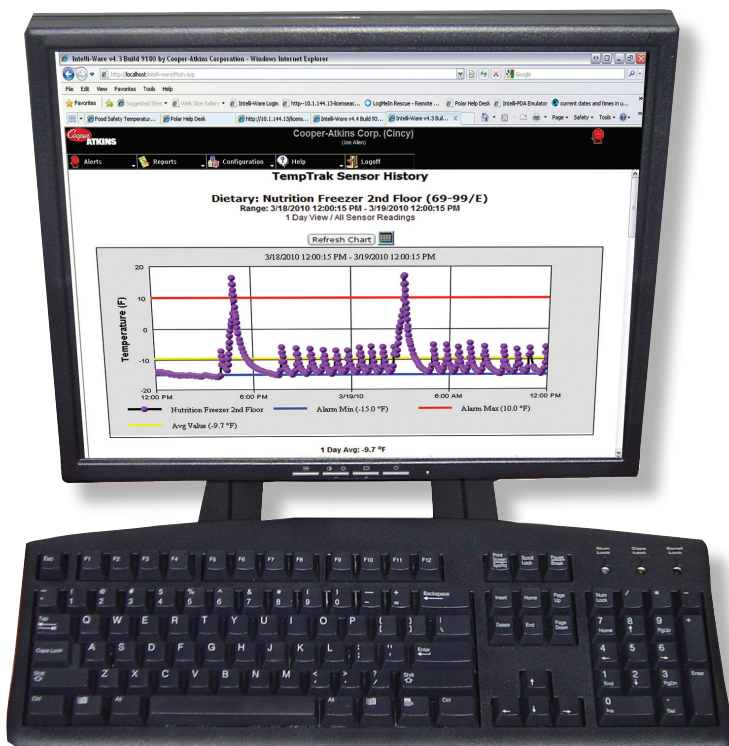
Login ID:

Password:

LOGON

Version 4.5.0020  
Licensed To: Cooper-Atkins Corp.

All access to the system is controlled through the use of centrally managed User IDs, and passwords.



## Sensor Notification Alerts:

- Screen pop-ups
- E-mails
- Pagers
- Cell phones
- Text messages
- Contact switch(s)
- Voice notifications
- Message boards

## Customized Alerts:

### Set by:

- Type of alert
- Time of day
- Day of week
- Escalation



## Quick-Serve Restaurants

Unit managers make critical inspection rounds during every shift. Give them more time to spend managing the business and being with customers by installing a **TempTrak** system chain wide. Use your network to monitor all restaurants from one central location.



## Schools K-12 / Universities

Eliminate labor-intensive and costly equipment inspections during holidays, weekends and summer breaks. Examine ALL temperatures at ALL locations through one centralized system - in real time. Across campus or across town, one kitchen or 100, let **TempTrak** watch over your critical equipment temperatures, 24 / 7.



## Hotels / Casinos / Resorts

Between multiple dining rooms, banquets, concessions and bars, temperature monitoring is critical and time-consuming. **TempTrak** can simplify and automate this process while monitoring all required HACCP data.



## Assisted Living Communities

Whether you're storing special dietary needs or temperature-sensitive pharmaceuticals, **TempTrak** can provide 24 / 7 monitoring of all critical assets. This will allow you to care for your patients more efficiently and be where you are needed most.

# TempTrak Current Sensor Readings

## Foodservice Overview

- Show Only Out-of-Range Sensors
- Use Dial Display
- Show Group Audit Charts

All Group Summary

REFRESH

### Group: All

User - Specified Temperature Ranges

Date / Time Samples

Accurate Temperatures Recorded Every 5 Minutes, 24 / 7

<b>Ambient Room Temperature</b> <b>TEMPERATURE</b> <b>75.6°F</b> Range: 69.0°F - 76.0°F 7/2/2010 3:38:24 PM Sensor ID: 228-216/I	<b>Freezer 1</b> <b>TEMPERATURE</b> <b>-11.6°F</b> Range: -15.0°F - 10.0°F 7/2/2010 3:36:33 PM Sensor ID: 93-108	<b>Freezer 2</b> <b>TEMPERATURE</b> <b>-11.7°F</b> Range: -15.0°F - 10.0°F 7/2/2010 3:38:39 PM Sensor ID: 69-99/I	<b>Freezer 3</b> <b>TEMPERATURE</b> <b>-11.9°F</b> Range: -15.0°F - 10.0°F 7/2/2010 3:38:39 PM Sensor ID: 69-99/E
<b>Freezer 4</b> <b>TEMPERATURE</b> <b>7.0°F</b> Range: -15.0°F - 10.0°F 7/2/2010 3:15:00 PM Sensor ID: 89-3/E	<b>Freezer 5</b> <b>TEMPERATURE</b> <b>-11.4°F</b> Range: -15.0°F - 10.0°F 7/2/2010 3:40:48 PM Sensor ID: 89-3/I	<b>Freezer 6</b> <b>TEMPERATURE</b> <b>-11.2°F</b> Range: -15.0°F - 10.0°F 7/2/2010 3:30:00 PM Sensor ID: 89-119/E	<b>Freezer 7</b> <b>TEMPERATURE</b> <b>-10.5°F</b> Range: -15.0°F - 10.0°F 7/2/2010 3:39:06 PM Sensor ID: 89-119/I
<b>Refrigerator 1</b> <b>TEMPERATURE</b> <b>24.6°F</b> Range: 33.0°F - 41.0°F 7/2/2010 3:25:05 PM Sensor ID: 240-171/I	<b>Refrigerator 2</b> <b>TEMPERATURE</b> <b>34.3°F</b> Range: 33.0°F - 41.0°F 7/2/2010 3:40:06 PM Sensor ID: 240-171/E	<b>Refrigerator 3</b> <b>TEMPERATURE</b> <b>10.4°F</b> [No Current Alarm Check] 7/2/2010 3:30:00 PM Sensor ID: 228-216/E	<b>Refrigerator 4</b> <b>TEMPERATURE</b> <b>46.7°F</b> Range: 35.0°F - 38.0°F 7/2/2010 3:30:00 PM Sensor ID: 72-69/I
<b>Refrigerator 5</b> <b>TEMPERATURE</b> <b>41.4°F</b> Range: 33.0°F - 41.0°F 7/2/2010 3:30:00 PM Sensor ID: 72-69/E	<b>Refrigerator 6</b> <b>TEMPERATURE</b> <b>51.3°F</b> Range: 33.0°F - 41.0°F 7/2/2010 3:30:00 PM Sensor ID: 71-130/I	<b>Refrigerator 7</b> <b>TEMPERATURE</b> <b>41.8°F</b> Range: 35.0°F - 38.0°F 7/2/2010 3:30:00 PM Sensor ID: 71-130/E	<b>Room Humidity</b> <b>HUMIDITY</b> <b>44.0% RH</b> Range: 16.0% - 25.0% 7/2/2010 3:41:17 PM Sensor ID: 187-84/2

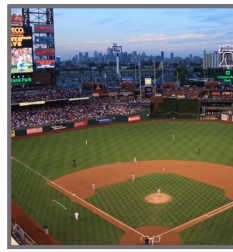
User-Defined Naming

Color-Coded ID's  
 • Green = Good  
 • Red = Too Warm  
 • Blue = Too Cold



## Food Processing Plants

Regulatory demands on the monitoring of temperatures both during processing and storage can be time-consuming. **TempTrak** can monitor the internal temperatures of all your fixed equipment and provide reports that FDA and USDA require to meet regulatory compliance.



## Stadiums

Protect your perishable assets by employing a **TempTrak** system throughout your facility at any season. From walk-ins and receiving to every concession stand, **TempTrak** is vigilant and dependable 24 / 7.



## Maintenance / Facilities

**TempTrak** is a proven ally of facilities personnel because it is an exception-based system, sending out temperature alerts via pager, text message or e-mail only when equipment has failed to meet user-defined limits. The software

provides valuable diagnostic temperature data on each piece of monitored equipment, and is often used to help determine a maintenance schedule... before a serious problem occurs. You must attend to ALL equipment, but with **TempTrak** you have an assistant working quietly in the background.



## Grocery Stores

It is a challenge to maintain refrigeration and monitor dozens of open-air cases in a grocery store. Temperature fluctuations that result in lost inventory are costly. A **TempTrak** system installed in your store will insure that critical alerts are sent to the appropriate personnel including your service company.

## TempTrak Provides Multiple Reporting Tools:

Real-time

Every 2 hours

AM / PM

Daily

Monthly

Temp Graphs

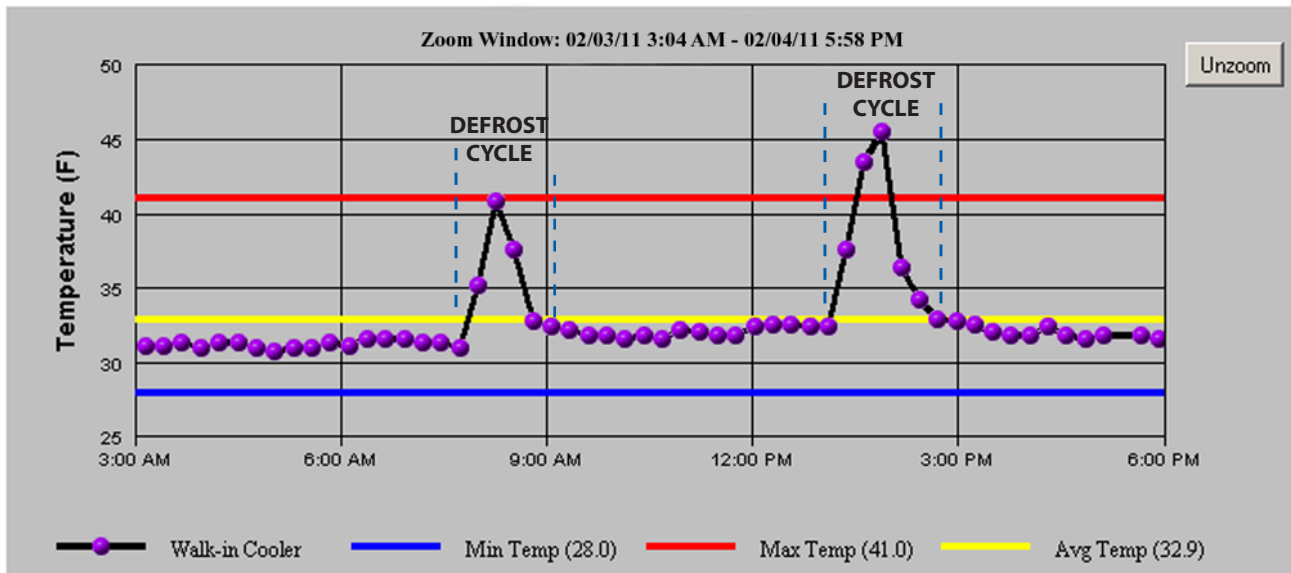
Corrective Actions

## TempTrak Temperature History

### Walk-in Cooler

Range 02/03/2011 12:23:05 AM - 02/04/2011 12:23:05 AM

1 Day view / All Temperature Readings



ALL TEMPERATURES COLLECTED ARE PLOTTED GRAPHICALLY

**IDENTIFY MAINTENANCE ISSUES BEFORE THEY HAPPEN!**

# TempTrak Monitoring Hardware

**TempTrak**, introduced in 1999, is the industry's first Wireless Temperature Monitoring System. It now has tens of thousands of transmitters (sensors) installed in facilities around the world. **TempTrak** will support an unlimited number of receivers and transmitters, multiple locations / buildings, and unlimited users and system views.

## TempTrak Transmitters (Sensors):

- 900 MHz spread spectrum frequency hopping RF
- 24 / 7 remote temperature monitoring (every 5 minutes with a 1 minute delta sampling to detect rapid temperature changes) supporting temperature ranges from -328° to 300°F (-200° to 148.9°C)
- Internal & External Dual Temperature Transmitter (sensors) 0° to 140°F (-17° to 60°C)
- Temperature / Humidity Transmitter - monitors temperatures from -20° to 150°F (-28.9° to 65.6°C) and humidity from 0% to 99% RH
- Door Open / Close - Contact Transmitter
- Transmitter (sensor) battery operated - last up to 3 years
- Transmit up to several hundred feet indoors



Internal & External Dual Temperature Transmitter (Sensor) 3.5" x 1.7" x 1.0"



Contact Transmitter (Sensor) 3.5" x 1.7" x 1.0"



Temperature / Humidity Transmitter (Sensor) 3.5" x 1.7" x 1.0"



Glycol Product Simulator

## TempTrak Probes:

- Moisture / Leak Detector
- Solid Simulator range: -25° to 180°F (-32° to 82°C)
- Steam Trap range: -40° to 392°F (-40° to 200°C)
- Standard Air / Surface; range: -25° to 180°F (-32° to 82°C)
- Glycol: -25° to 180°F (-32° to 82°C)
- 10" Hot with 300°F (148.9°C) max temperature
- Dishwasher Probe, includes Pipe Clamp - monitors temperatures from 67° to 221°F (19.4° to 105°C)



Solid Simulator Probe



Steam Trap Probe

## TempTrak Repeater (Signal Booster):

- No limit to the number of transmitters (sensors) a single Repeater can boost
- Transmission range up to 4 miles (depending on the facility and type of construction)
- In the event of a power outage each **TempTrak** Repeater has an on-board battery back-up that will average 24 hours
- Fully "supervised", and in the event that it is tampered with, will send a notification to the system
- Wall-mounting (optional outdoor enclosure available)
- Does not require connectivity to another repeater or to the network



Standard Air / Surface Probe

## TempTrak Receiver and Intelli-Base Buffer:

- Attached to the network either via the LAN network port or serially direct to a single-station PC
- In the event of a network outage, the buffer stores all temperature readings until server is back online
- Storage capacity of a Intelli-Base Buffer with 200 transmitters, communicating every 15 minutes, will have data stored for 400 hours (16 days)
- Each Receiver is fully "supervised", and in the event that it is tampered with, will send a notification to the system



Repeater (Signal Booster) 6.5" x 3.5" x 1.0"



Receiver 6.5" x 3.5" x 1.0"



Intelli-Base Buffer 6.5" x 3.5" x 1.0"

# TempTrak Monitoring Software

## Minimum Server Software Requirements:

When the software is loaded onto your in-house server: Windows Server 2000 (SP4), Windows Server 2003 (SP2), Windows Server 2008. Standard 5 User. (32 or 64 Bit Microsoft SQL Server Express or Microsoft SQL Server 2005 / 2008 (32 or 64 Bit): Standard Edition, 1 Processor License. Microsoft Internet Explorer 6.0 (or higher), Internet Information Services (IIS), Sun Java, Microsoft XML, Microsoft Active X, Microsoft Excel

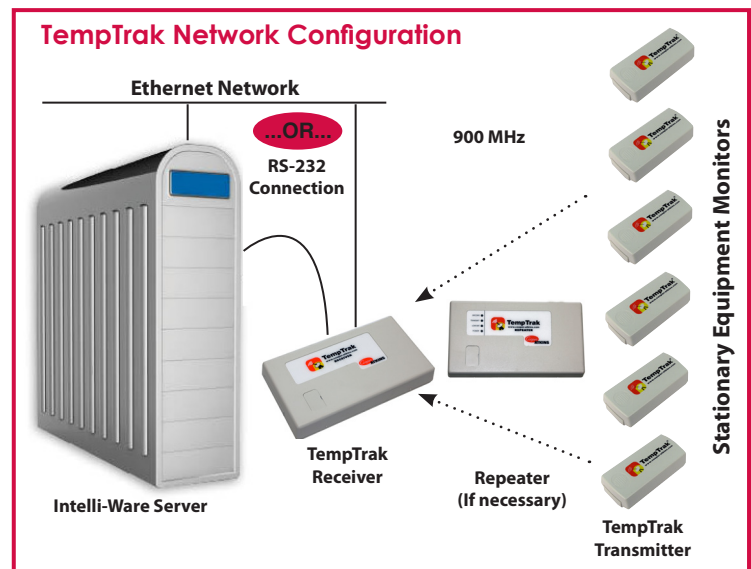
## Minimum Server Hardware Requirements:

- Intel / AMD Processor 2.0+ GHz (4GB RAM) (Pentium 4, Core Duo, Quad Core, Xeon or similar) (Athlon, Phenom or similar)
- 2 x 160 GB hard drives with:
  - Raid-1
  - ATA-100 / SATA 7200 RPM
  - (SCSI 10k / 15k RPM)
- Network card 10 / 100 / 1000 MB
- Serial port (Or IOGear USB-serial adapter)
- 56k V.90 modem (required for digital paging)
- IVR modem (required for voice notification)
- DVD / RW drive and USB port

**TempTrak** is a "browser-based" application allowing any user with a valid log on ID to access **TempTrak** from any networked PC.

- Supports "Multiple Database" per server, to accommodate multiple facilities operating on one server

- 4GB memory (recommended minimal requirement)
- Allows the user to store as much data as necessary, with automatic backups
- Current temperature readings
- Graphing of any (or multiple) temperature(s) or other transmitter(s) (sensors) over any period of time
- Hourly performance reports
- Monthly and yearly equipment performance reports
- Configure each transmitter (sensor) with its own alerting rule sets
- Define user views to specific groups of transmitters (sensors) to control user access
- Configure how often to record temperatures
- Audit tracking log - tracking every system log on and what was done



## TempTrak System Alerts

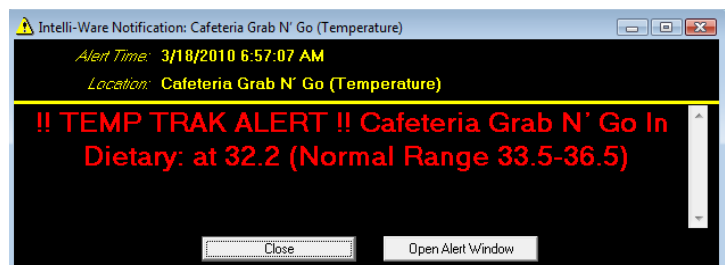
Alerts may be configured by time of day or day of week to provide unlimited options. Complete tracking of all corrective actions by time, user and action. When a **TempTrak** Transmitter identifies a monitoring point that has deviated from pre-set range, it sends an alert notification via a variety of methods including:

- Computer monitor screen pop-ups
- E-mails
- Pagers
- Cell phones (via e-mail)
- Text messages
- Contact switches (turn lights or sirens on and off, even connect to security systems to transfer an alert)
- Voice notifications
- Scrolling message boards

**Missed Communication** - notification profile alerts (should a transmitter [sensor] miss its scheduled contact time)

**Low Battery Alert** - triggered when a transmitter (sensor) detects low battery (approximately three (3) weeks before the battery will die)

**Alert Escalation** - makes sure no alert goes answered



# I-Care Support Program

In order to provide outstanding service to our **TempTrak** customers, we have implemented the I-Care Support Program which includes the following features:

- **24 / 7 Unlimited Help Desk Support –**  
This allows the customer to call directly to the I-Care Help Desk for assistance on any issue regarding the performance of the **TempTrak** software.
- **Annual Software Enhancement License –**  
This provides all upgrades and enhancements that are released during the 12-month period of the I-Care contract.
- **Unlimited Web Based Training Seminars –**  
Cooper-Atkins provides Web-Based Training Seminars. I-Care participants can register for participation and select topics for training. Classes will run up to 1 hour. Seminars will cover all aspects of software use the software, including setup, configuration, reports, and maintenance.

**Other additional Packages include options such as Extended Warranties, On-Site Performance Validation and On-Site Training.**

It is the goal of **Cooper-Atkins** to provide superior Help Desk support, and the **I-Care Support Program** has been developed to provide the highest level of customer service.



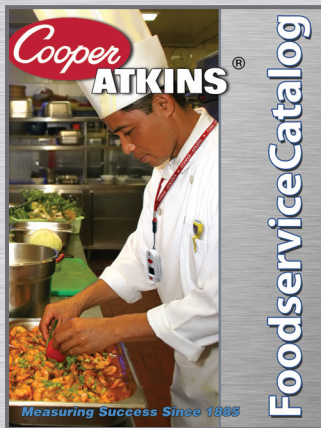
Support from the I-Care Help Desk



Annual Software Enhancements



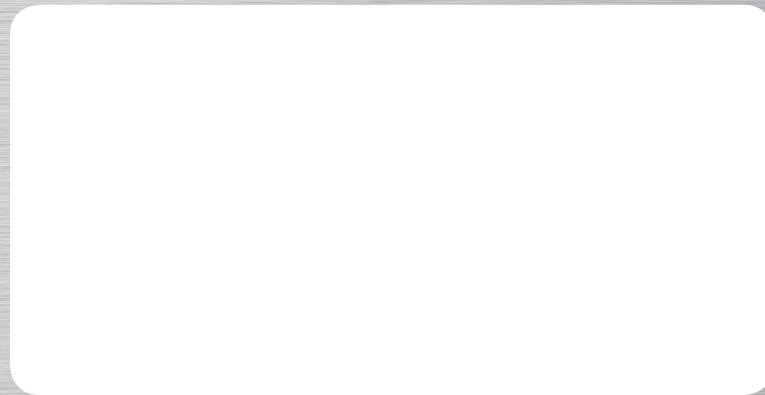
Unlimited Web Based Training



**67-968**  
Foodservice Catalog



**67-1040**  
Healthcare Catalog



**For additional information on features, system requirements or on-site visits please contact your Cooper-Atkins representative**

Cooper-Atkins Corporation, 33 Reeds Gap Road Middlefield, CT 06455 U.S.A.  
800-835-5011 • 860-347-2256 • Fax: 860-347-2256 • [www.cooper-atkins.com](http://www.cooper-atkins.com)

67-1095  
15M-V0311